



FLORIDA DISTRICT POSTSECONDARY CAREER, TECHNICAL AND ADULT EDUCATION 2023-2024 SUMMARY

DISTRIBUTION OF PROGRAMS

56

Districts with
Career, Technical and
Adult Education
programs

55

Districts with adult general education programs.

47

Career Centers (COE Accredited Institutions).

39

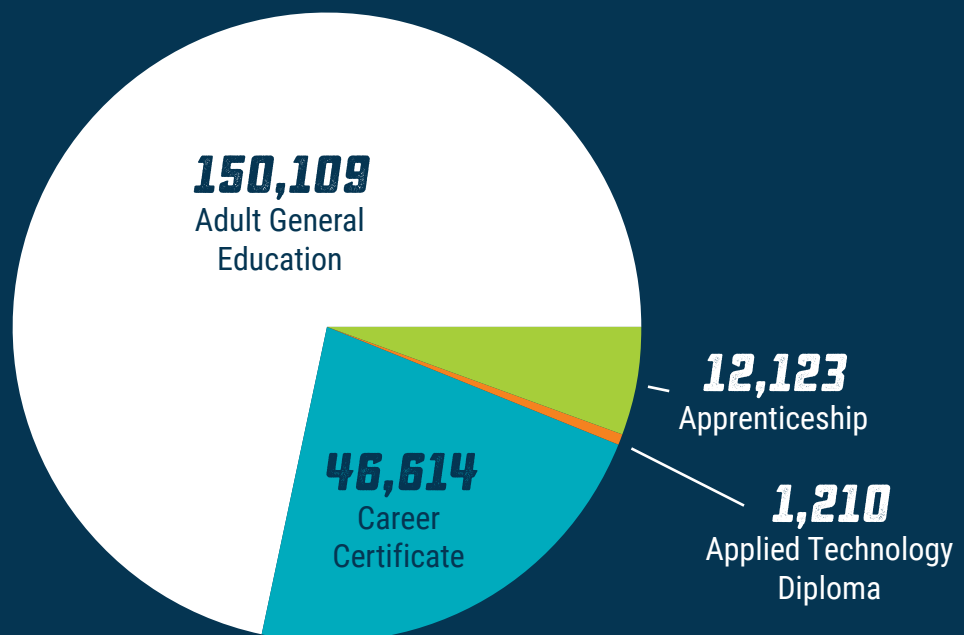
Districts with career certificate programs.

19

Districts with apprenticeship programs.

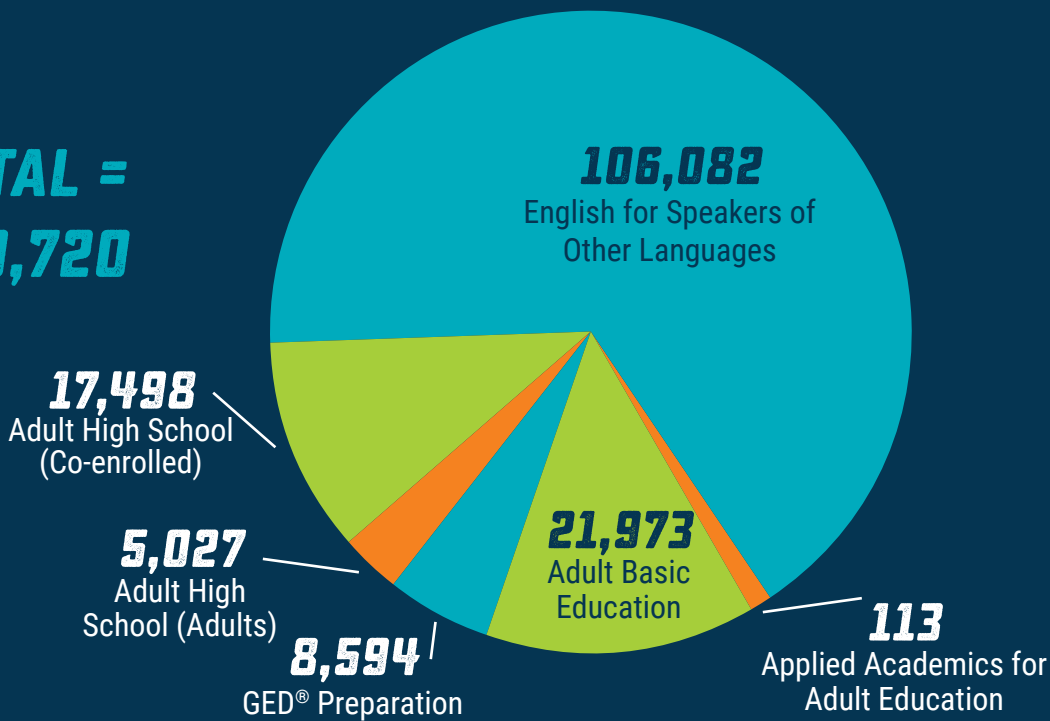
STATEWIDE DISTRICT CAREER, TECHNICAL AND ADULT EDUCATION HEADCOUNT

**TOTAL =
210,056**



DISTRICT ADULT GENERAL EDUCATION ENROLLMENT BY PROGRAM¹

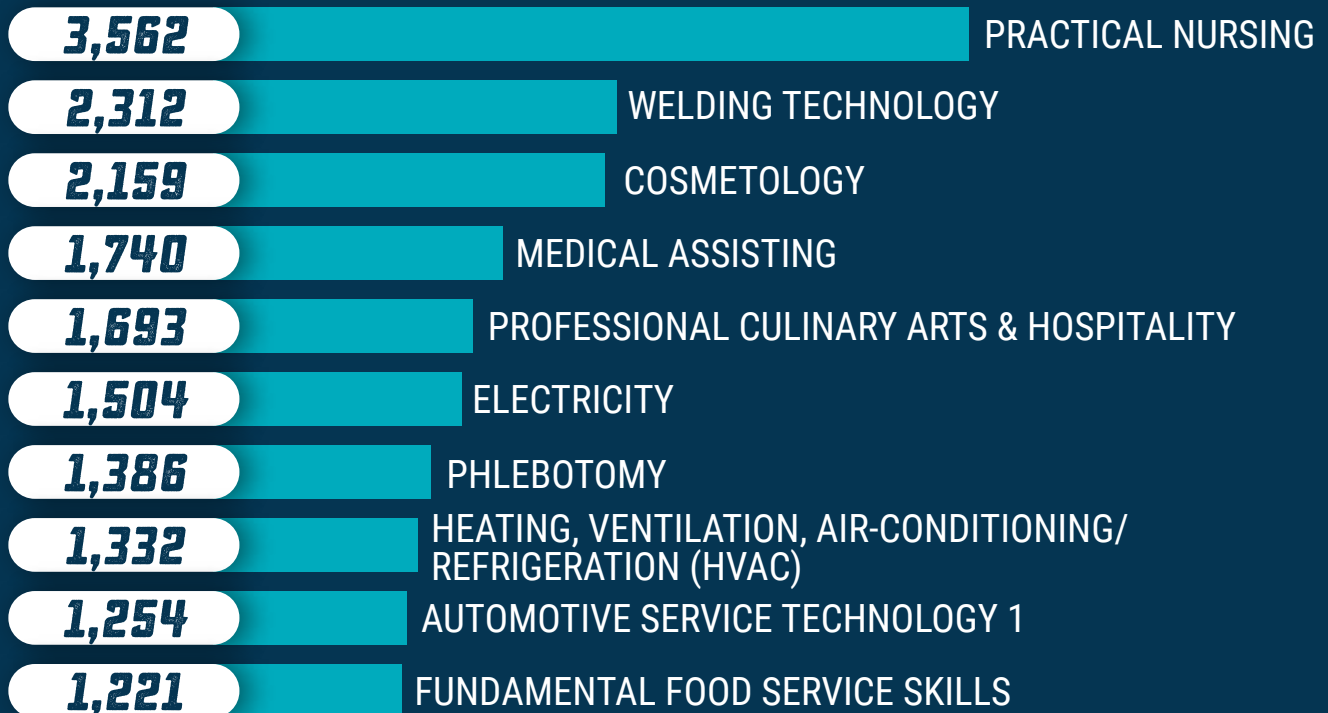
**TOTAL =
160,720**



Source: FDOE data

¹Students may have been enrolled in more than one program. Because of the duplication, the total enrollment in this chart is larger than the adult general education enrollment in the previous chart.

TOP TEN DISTRICT POSTSECONDARY CAREER CERTIFICATE PROGRAM ENROLLMENTS



Source: FDOE data

DISTRICT POSTSECONDARY CAREER AND TECHNICAL EDUCATION COMPLETIONS

64,856

Occupational Completion Points

27,461

Terminal Occupational Completion Points²

18,073

Program Completers³

Source: FDOE data

²Terminal Occupational Completion Points are exit points in a program from which students may exit with skills sufficient to prepare them for a specific occupation.

³Program completers are students who have completed all of the Occupational Completion Points in a certificate program and met applicable basic skills requirements.

ADULT GENERAL EDUCATION LEARNING GAINS AND DIPLOMAS

ADULT GENERAL EDUCATION MEASURABLE SKILL GAINS (MSG)	LEARNING GAINS EARNED
MSG 1 - Educational Functioning Level Gain	56,796
MSG 2 - Secondary Diploma/Equivalent	5,873
MSG 3 - Secondary or Postsecondary Transcript	105
MSG 4 - Progress Toward Milestones	33
MSG 5 - Passing Technical/Occupational Knowledge-Based Exam	221
TOTAL	63,028

Source: FDOE data, Statewide NRS Report

For additional information on the measurable skill gain types, please reference the WIOA Primary Indicators of Performance Guide - <https://www.fl DOE.org/core/fileparse.php/9904/urlt/WIOAPrimaryIndicatorsAGE.pdf>

PARTICIPANT DEMOGRAPHICS BY DISTRICT CAREER, TECHNICAL AND ADULT EDUCATION PROGRAM AREA

DISTRICT WORKFORCE EDUCATION PROGRAM AREA	SEX		RACE/ETHNICITY						
	FEMALE	MALE	AFRICAN AMERICAN	AMERICAN INDIAN	ASIAN	HISPANIC	PACIFIC ISLANDER	WHITE	TWO OR MORE
ADULT GENERAL EDUCATION	56.6%	43.4%	35.6%	<1%	1.2%	49.1%	<1%	12.7%	<1%
CAREER CERTIFICATE & APPLIED TECHNOLOGY DIPLOMA	45.0%	55.0%	26.8%	<1%	2.0%	35.4%	<1%	32.8%	2.6%
APPRENTICESHIP	7.8%	92.2%	17.3%	<1%	<1%	27.2%	<1%	52.0%	1.5%

Source: FDOE data

EMPLOYMENT OUTCOMES

\$47,576

Estimated initial fulltime annual earnings of a 2021-22 district certificate terminal OCP earner.⁴

55%

of district certificate completers in 2021-22 were employed in fall 2022.⁵

Source: Florida Education & Training Placement Information Program Outcomes Reports. Wages data will lag current report year.

⁴Estimated average earnings for those found employed on an estimated full-time basis.

⁵Estimated number of individuals working Full Time / Full Quarter divided by the Total Individuals.

FALL 2022 AVERAGE INITIAL EARNINGS OF DISTRICT CAREER CERTIFICATE EARNERS IN SELECT OCCUPATIONS WITH STATEWIDE DEMAND



Source: Florida Education & Training Placement Information Program Outcomes Reports
Wages data will lag current report year.