

DISTRICT CAREER DUAL ENROLLMENT: ENROLLMENT REPORT, 2013-14



January 2015



**Division of Career and Adult Education
Rod Duckworth, Chancellor**

District Career Dual Enrollment: 2013-14 Enrollment Report

Definition of Career Dual Enrollment

Florida Statutes define dual enrollment as one of several articulated acceleration mechanisms (early admission, advanced placement, credit by examination, International Baccalaureate, and other postsecondary early entrance opportunities) where students enroll in postsecondary instruction and receive both postsecondary and secondary credit.¹ The intent is to broaden curricular options, increase depth of study options available to students and shorten the time necessary for completing the requirements for earning a high school diploma and a postsecondary certificate or degree.

Through dual enrollment, public, private and home education secondary students may enroll in postsecondary courses creditable toward both high school graduation and a career certificate or an associate or baccalaureate degree. There are two curricular avenues for students to participate in dual enrollment: early college (college credit) and career dual enrollment. Early college dual enrollment refers to academic or college credit coursework at the postsecondary level that leads to a college credit certificate or degree. Early college dual enrollment is available through Florida colleges and universities.

Career dual enrollment is a curricular option of elective credits toward earning the high school diploma and completing a career certificate program and is available through district career centers and Florida colleges. Career dual enrollment is not intended to enable students to take isolated courses unrelated to a program. School districts must inform all students of the option and eligibility criteria. Students participating in dual enrollment are exempt from the payment of registration, tuition, laboratory fees and other fees, such as technology fees and parking decal fees, typically assessed with tuition.

The key feature of dual enrollment is the award of both secondary and postsecondary credit, not the location of instruction. Applied Academics for Adult Education, developmental courses and other pre-collegiate instruction are ineligible for dual enrollment credit because students do not receive postsecondary credit. Physical education skills courses are also ineligible for dual enrollment.

Career Dual Enrollment Data

In 2013-14, ninety-one percent (91%) of career dual enrollment took place in district career centers and nine percent (9%) took place in colleges. District career dual enrollment has increased from 5,793 students in 2012-13 to 6,020 students in 2013-14. Several districts experienced declines in their total headcount while others reported increases. For example, Orange County School District, which accounted for seventeen percent (17%) of the total headcount of dual enrollment of students for the 2012-13 school year, reported an eleven percent (11%) decline in dual enrollment headcount for the 2013-14 school year. In contrast, Suwannee County School District reported a dual enrollment headcount of 163 students for the 2013-14 school year compared with 15 students reported for the 2012-13 school year.

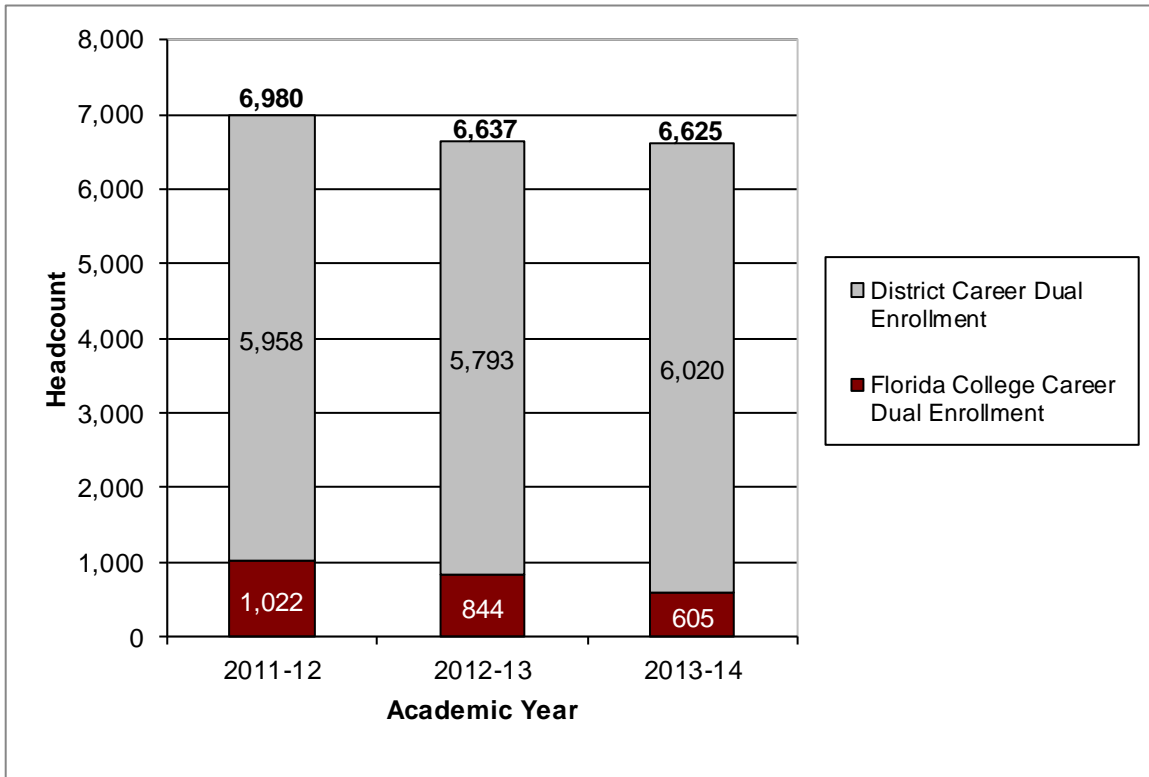
Fifty-nine percent (59%) of district career dual enrollment students in 2013-14 were male and the majority of the total population (63%) was identified as a minority. In 2013-14, Miami-Dade and Orange County School Districts reported the highest career dual enrollment headcount. Orange and Broward County School Districts reported the highest career dual enrollment FTE.

¹ Section 1007.271, F.S.

The district career dual enrollment programs with the highest headcounts were Commercial Foods and Culinary Arts, Medical Administrative Specialist, Automotive Service Technology, Aircraft Airframe Mechanics and Aircraft Powerplant Mechanics.

Exhibit 1

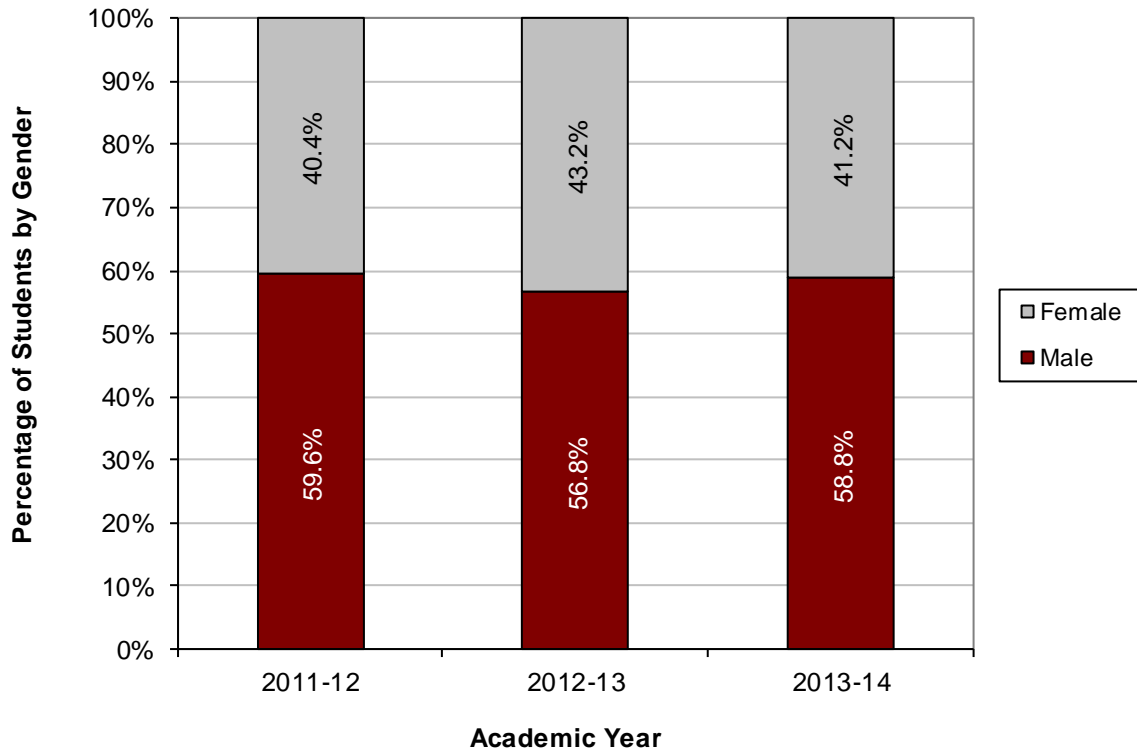
District and college career dual enrollment headcount and percent of enrollment from 2011-12 to 2013-14



Source: Community College Student Database and Workforce Development Information System

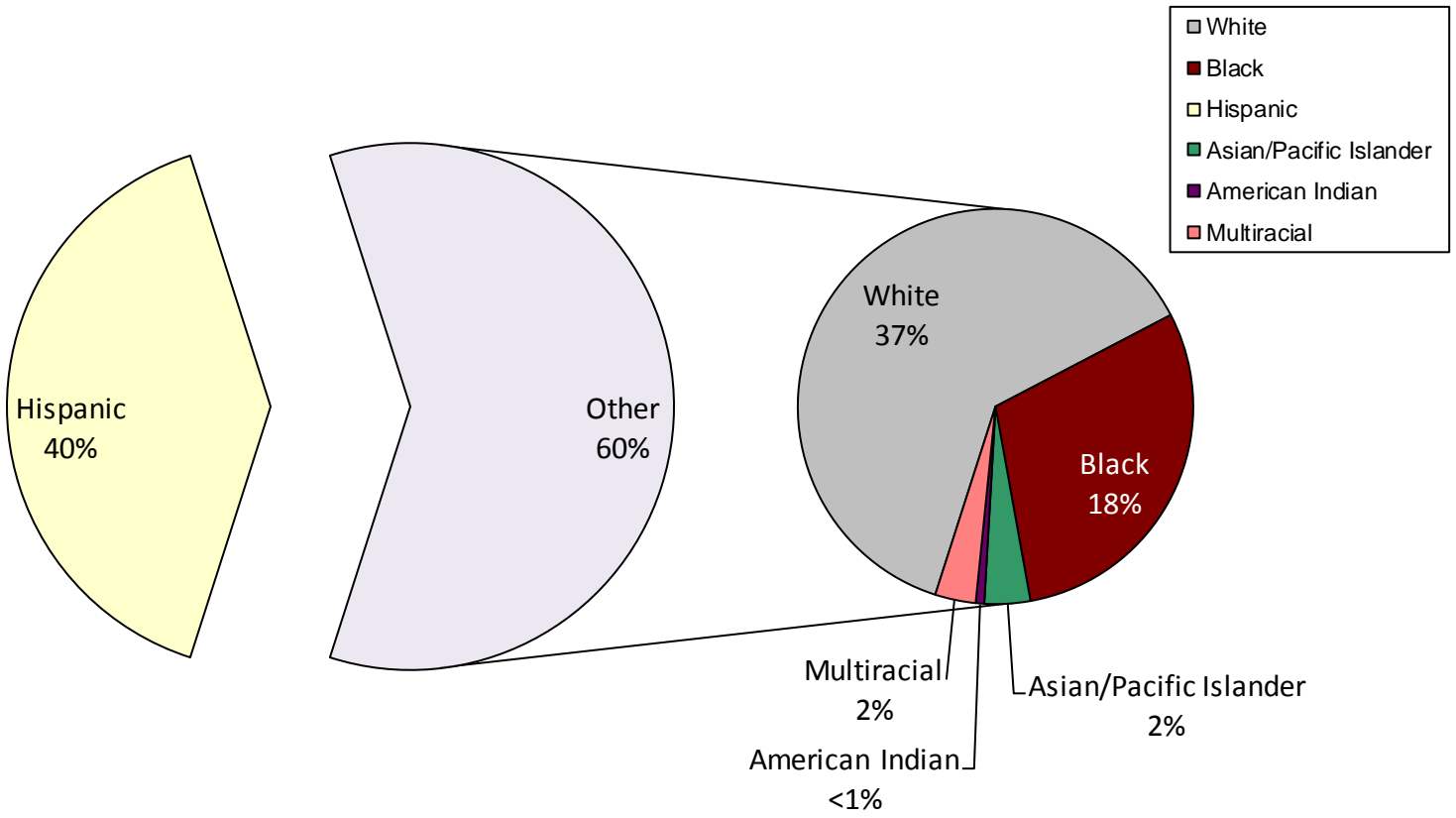
Exhibit 2

Percent of district career dual enrollment students by gender from 2011-12 to 2013-14



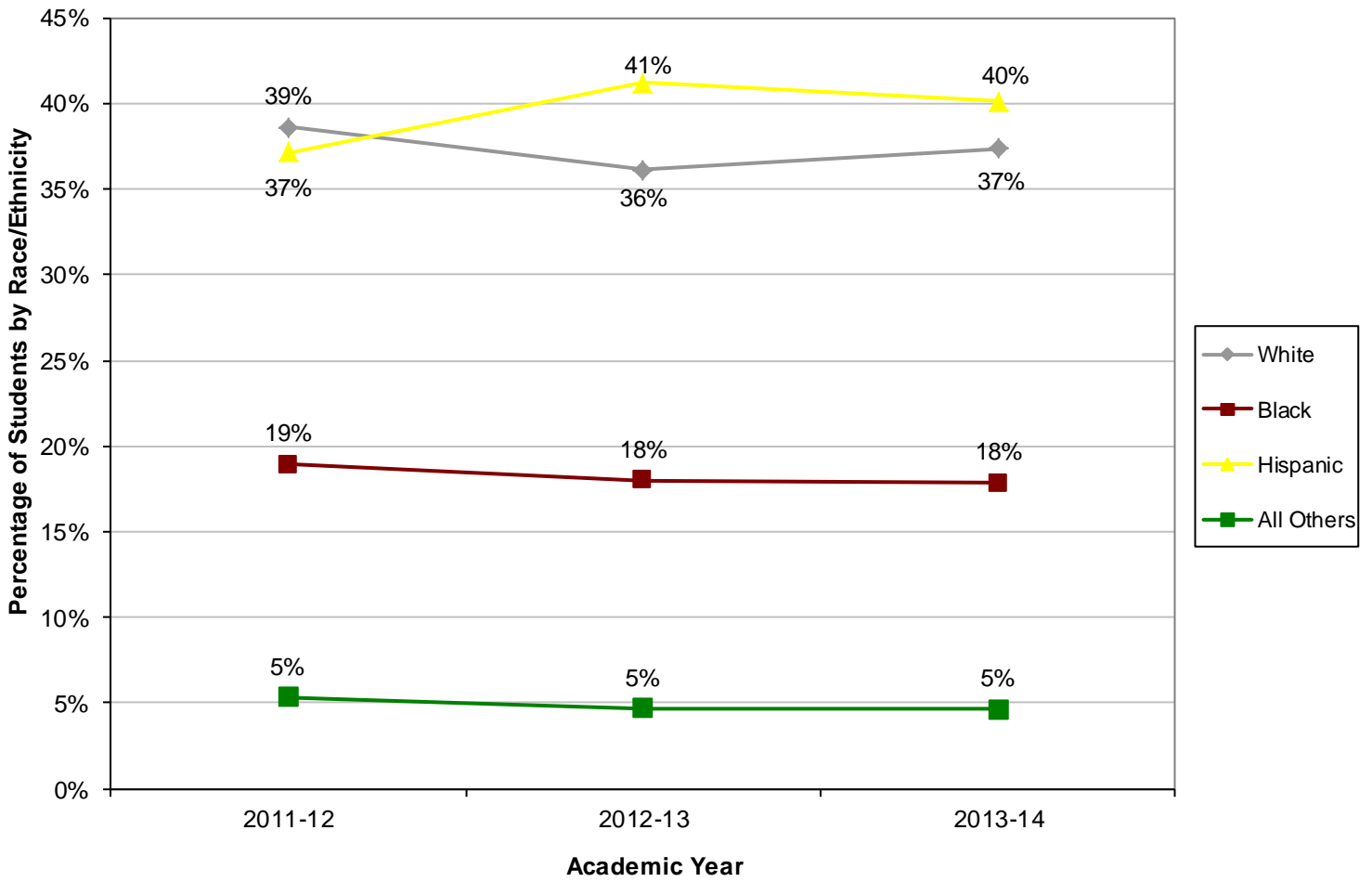
Source: Workforce Development Information System

Exhibit 3
Percent of district career dual enrollment students by race/ethnicity for 2013-14



Source: Workforce Development Information System

Exhibit 4
Percent of district career dual enrollment students by race/ethnicity from 2011-12 to 2013-14



Source: Workforce Development Information System

Table 1
Headcount of district career dual enrollment students by district, 2011-12 to 2013-14

Headcount of Students Dually Enrolled in District Career Certificate Programs			
District	2013-14	2012-13	2011-12
13 Miami-Dade	1,245	1,174	968
06 Broward	925	852	626
48 Orange	876	987	2,199
57 Santa Rosa	564	599	182
11 Collier	448	488	452
58 Sarasota	400	57	52
49 Osceola	329	335	265
37 Leon	300	391	399
41 Manatee	192	276	115
61 Suwannee	163	15	22
67 Washington	157	158	149
55 St. Johns	154	152	195
35 Lake	66	61	108
62 Taylor	47	0	32
08 Charlotte	30	23	60
36 Lee	29	102	7
31 Indian River	24	29	27
17 Escambia	20	25	21
04 Bradford	16	17	16
42 Marion	16	25	19
46 Okaloosa	10	5	0
09 Citrus	6	9	15
53 Polk	2	1	0
66 Walton	1	10	16
03 Bay	0	0	1
18 Flagler	0	2	12
29 Hillsborough	0	0	0
Total	6,020	5,793	5,958

Source: Workforce Development Information System

Table 2
 Instructional hours and full-time equivalents (FTE) for district career dual enrollment students by district, 2011-12 to 2013-14

District Career Certificate Dual Enrollment Instructional Hours and Workforce FTE (Hours/900)							
District	2013-14		2012-13		2011-12		
	Hours	FTE	Hours	FTE	Hours	FTE	
48 Orange	416,692	462.99	503,488	559.43	589,496	655.00	
06 Broward	361,852	402.06	336,393	373.77	221,428	246.03	
13 Miami-Dade	290,840	323.16	282,450	313.83	249,465	277.18	
11 Collier	184,384	204.87	211,286	234.76	188,648	209.61	
49 Osceola	160,215	178.02	185,252	205.84	157,400	174.89	
58 Sarasota	132,968	147.74	19,239	21.38	16,605	18.45	
57 Santa Rosa	97,903	108.78	107,880	119.87	46,585	51.76	
41 Manatee	90,993	101.10	104,515	116.13	39,973	44.41	
67 Washington	51,227	56.92	55,064	61.18	54,784	60.87	
37 Leon	48,408	53.79	54,165	60.18	59,728	66.36	
55 St. Johns	40,946	45.50	32,237	35.82	22,261	24.73	
35 Lake	33,212	36.90	32,688	36.32	47,629	52.92	
61 Suwannee	15,828	17.59	556	0.62	1,258	1.40	
36 Lee	12,648	14.05	77,635	86.26	1,002	1.11	
08 Charlotte	12,158	13.51	14,321	15.91	26,181	29.09	
62 Taylor	6,961	7.73	0	0.00	8,347	9.27	
17 Escambia	4,469	4.97	16,456	18.28	5,775	6.42	
46 Okaloosa	3,695	4.11	2,240	2.49	0	0.00	
04 Bradford	3,275	3.64	4,415	4.91	4,119	4.58	
09 Citrus	3,256	3.62	3,481	3.87	6,558	7.29	
42 Marion	3,161	3.51	3,909	4.34	3,722	4.14	
31 Indian River	1,794	1.99	2,175	2.42	2,025	2.25	
53 Polk	136	0.15	270	0.30	0	0.00	
66 Walton	79	0.09	1,892	2.10	3,214	3.57	
03 Bay	0	0.00	0	0.00	528	0.59	
18 Flagler	0	0.00	292	0.32	3,206	3.56	
29 Hillsborough	0	0.00	0	0.00	0	0.00	
Total	1,977,100	2,196.78	2,052,299	2,280.33	1,759,937	1,955.49	

Source: Workforce Development Information System

Table 3
Headcount of district career dual enrollment students by technical center, 2013-14²

Headcount of Students Dually Enrolled in District Career Certificate Programs				
District	Technical Center			2013-14
04	Bradford	0171	Bradford-Union Technical Center	16
06	Broward	1051	Sheridan Technical Center	258
06	Broward	1291	William T. McFatter Technical Center	378
06	Broward	2221	Atlantic Technical Center	291
08	Charlotte	0161	Charlotte Technical Center	30
09	Citrus	0131	Withlacoochee Technical Institute	6
11	Collier	0281	Lorenzo Walker Institute of Technology	283
11	Collier	0581	Immokalee Technical Center	165
13	Miami-Dade	7702	South Dade Adult Education Center	61
13	Miami-Dade	7801	George T. Baker Aviation	594
13	Miami-Dade	8005	Lindsey Hopkins Technical Education Center	134
13	Miami-Dade	8901	Miami Lakes Educational Center	362
13	Miami-Dade	8911	Robert Morgan Educational Center	94
17	Escambia	0861	George Stone Area Vocational Technical Center	20
31	Indian River	0032	Adult and Community Education School	24
35	Lake	0531	Lake Technical Center	66
36	Lee	0541	Fort Myers Institute of Technology	13
36	Lee	0581	Cape Coral Institute of Technology	16
37	Leon	0361	Lively Technical Center	160
41	Manatee	0211	Manatee Technical Institute	192
42	Marion	9412	Community Technical and Adult Education Center	16
46	Okaloosa	0701	Choice High School and Technical Center	10
48	Orange	1131	Orange Technical Education Center - Mid-Florida Tech	467
48	Orange	1581	Orange Technical Education Center - Orlando Tech	207
48	Orange	5783	Orange Technical Education Center - Westside Tech	106
48	Orange	5852	Orange Technical Education Center - Winter Park Tech	97
49	Osceola	0861	Technical Education Center of Osceola (TECO)	329
53	Polk	1591	Maynard A. Traviss Career Center	2
55	St Johns	0231	First Coast Technical College	154
57	Santa Rosa	0321	Radford M. Locklin Technical Center	564
58	Sarasota	0391	Sarasota County Technical Institute	400
61	Suwannee	0012	Suwannee-Hamilton Technical Center	163
62	Taylor	0131	Taylor Technical Institute	47
66	Walton	0301	Walton Career Development Center	1
67	Washington	0141	Washington-Holmes Technical Center	157
Total				5,883

Source: Workforce Development Information System

² Unduplicated headcount of district career certificate programs only includes students enrolled in district technical centers.

Table 4

Instructional hours and full-time equivalents (FTE) for district career dual enrollment students by technical center, 2013-14³

District Career Certificate Dual Enrollment Instructional Hours and FTE (Hours/900)					
				2013-14	
District	Technical Center			Hours	FTE
04	Bradford	0171	Bradford-Union Technical Center	3,275	3.64
06	Broward	1051	Sheridan Technical Center	82,713	91.90
06	Broward	1291	William T. McFatter Technical Center	154,965	172.18
06	Broward	2221	Atlantic Technical Center	124,174	137.97
08	Charlotte	0161	Charlotte Technical Center	12,158	13.51
09	Citrus	0131	Withlacoochee Technical Institute	3,256	3.62
11	Collier	0281	Lorenzo Walker Institute of Technology	153,042	170.05
11	Collier	0581	Immokalee Technical Center	31,342	34.82
13	Miami-Dade	7702	South Dade Adult Education Center	13,510	15.01
13	Miami-Dade	7801	George T. Baker Aviation	171,570	190.63
13	Miami-Dade	8005	Lindsey Hopkins Technical Education Center	36,890	40.99
13	Miami-Dade	8901	Miami Lakes Educational Center	57,820	64.24
13	Miami-Dade	8911	Robert Morgan Educational Center	11,050	12.28
17	Escambia	0861	George Stone Area Vocational Technical Center	4,469	4.97
31	Indian River	0032	Adult and Community Education School	1,794	1.99
35	Lake	0531	Lake Technical Center	33,212	36.90
36	Lee	0541	Fort Myers Institute of Technology	6,132	6.81
36	Lee	0581	Cape Coral Institute of Technology	6,516	7.24
37	Leon	0361	Lively Technical Center	27,319	30.35
41	Manatee	0211	Manatee Technical Institute	90,993	101.10
42	Marion	9412	Community Technical and Adult Education Center	3,161	3.51
46	Okaloosa	0701	Choice High School and Technical Center	3,695	4.11
48	Orange	1131	Orange Technical Education Center - Mid-Florida Tech	208,434	231.59
48	Orange	1581	Orange Technical Education Center - Orlando Tech	109,259	121.40
48	Orange	5783	Orange Technical Education Center - Westside Tech	49,549	55.05
48	Orange	5852	Orange Technical Education Center - Winter Park Tech	49,450	54.94

³ Instructional hours and FTE of district career certificate programs only include students enrolled in district technical centers.

District Career Certificate Dual Enrollment Instructional Hours and FTE (Hours/900)					
				2013-14	
District			Technical Center	Hours	FTE
49	Osceola	0861	Technical Education Center of Osceola (TECO)	160,215	178.02
53	Polk	1591	Maynard A. Traviss Career Center	136	0.15
55	St Johns	0231	First Coast Technical College	40,946	45.50
57	Santa Rosa	0321	Radford M. Locklin Technical Center	97,903	108.78
58	Sarasota	0391	Sarasota County Technical Institute	132,968	147.74
61	Suwannee	0012	Suwannee-Hamilton Technical Center	15,828	17.59
62	Taylor	0131	Taylor Technical Institute	6,961	7.73
66	Walton	0301	Walton Career Development Center	79	0.09
67	Washington	0141	Washington-Holmes Technical Center	51,227	56.92
Total				1,956,011	2,173.35

Source: Workforce Development Information System

Table 5
Headcount of district career certificate programs for 2013-14⁴

District Career certificate Program by Headcount of Career Dual Enrollment Students	
Program	Enrollment 2013-14
Commercial Foods and Culinary Arts	620
Medical Administrative Specialist	432
Automotive Service Technology	325
Aircraft Airframe Mechanics	265
Aircraft Powerplant Mechanics	261
Automotive Service Technology 1	221
Electronic Technology	221
Medical Assisting	210
Practical Nursing	207
Computer Systems Technology	176
Administrative Office Specialist	171
Pharmacy Technician PSAV	149
Automotive Collision Repair and Refinishing	146
Early Childhood Education ⁵	140
Television Production	132
Patient Care Technician	127
Applied Welding Technologies	106
Cosmetology	100
Building Construction Technologies	98
Drafting PSAV	91
Nails Specialty	84
Commercial Art Technology	78
Computer Systems & Information Technology (CSIT)	78
Network Support Services	71
Veterinary Assisting	63
Multimedia Design Technology	62
Legal Administrative Specialist	57
Pharmacy Technician ATD	57
Electricity	55
Information Technology	54
Digital Video Production	50
Java Development & Programming	50
Nursing Assistant (Articulated)	50
Web Development	50
Digital Design 1	47
Digital Design	46
Accounting Operations	45
Digital Design 2	36
Dental Assisting ⁶	35
Medical Coder/Biller--ATD	35
Wireless Telecommunications	35

⁴ Headcount of district career certificate programs includes duplicated count of students enrolled in multiple programs.

⁵ Enrollment reported with the older program number, V200210, has been combined and reported in the new program number, E300100.

⁶ Enrollment reported with the older program number, H170104, has been combined and reported in the new program number, H170106.

District Career certificate Program by Headcount of Career Dual Enrollment Students	
Program	Enrollment 2013-14
Emergency Medical Technician (Basic)	34
Digital Audio Production	32
.NET Application Development and Programming	31
Fire Fighter	31
Game/Simulation/Animation Programming	31
Digital Media/Multimedia Design	29
Diversified Career Technology	29
Phlebotomy	28
Cabinetmaking	26
Automotive Detailing and Reconditioning	24
Lodging Operations	24
Medium and Heavy Duty Truck and Bus Technician	24
3-D Animation Technology	22
Air Conditioning, Refrigeration and Heating Technology	22
Business Supervision and Management	22
Commercial Photography Technology	22
Facials Specialty	22
Sewing Technology and Services	21
Teacher Assisting	21
Machining	20
Optometric Assisting	20
Brick and Block Masonry	19
Commercial Photography Technology 1	19
Database and Programming Essentials	19
Automotive Collision Repair and Refinishing 1	18
Major Appliance and Refrigeration Repair	18
Marketing, Merchandising, and Parts Operations 1	18
E-Commerce Marketing	15
Automotive Service Technology 2	13
Customer Service Representative	12
Game/Simulation/Animation Visual Design	12
Landscape Management	12
Medical Laboratory Assisting (Postsecondary)	12
Nursing Assistant (Long-Term Care)	12
Barbering	11
Building Trades and Construction Design Technology	10
Marketing	10
Medical Record Transcribing--ATD	10
Patient Care Assistant	10
Air Conditioning, Refrigeration and Heating Technology 1	9
Emergency Medical Technician (Basic)--ATD	9
Industrial Machinery Maintenance 1	8
Marine Service Technology 1	8
Marketing, Merchandising, and Parts Operations 2	8
Printing and Graphic Communications	8
Digital Printing Technology	7
Energy Technician	7
Entrepreneurship	7

District Career certificate Program by Headcount of Career Dual Enrollment Students	
Program	Enrollment 2013-14
Hemodialysis Technician	7
Architecture and Construction Cooperative Education - OJT	6
Automotive Collision Repair and Refinishing 2	6
Criminal Justice Operations	6
Heavy Equipment Mechanics	6
Multimedia Design Technology 2	6
Web Programming Services	6
Avionics	5
Network Systems Administration	5
New Media Technology	5
Applied Information Technology	4
Baking and Pastry Arts	4
Carpentry 1	4
Computer Systems Technology 2	4
Dental Laboratory Technology	4
Interior Decorating Services	4
Marine Service Technology	4
Medium and Heavy Duty Truck and Bus Technician 1	4
PC Support Services	4
Tile Setting	4
Carpentry	3
Computer Systems Technology 1	3
Electrical and Instrumentation Technology 1	3
Fashion Technology and Design Services	3
Plumbing Technology	3
Psychiatric Technology	3
Advanced Esthetics	2
Air Conditioning, Refrigeration and Heating Technology 2	2
Applied Cybersecurity	2
Electrical and Instrumentation Technology	2
Environmental Services	2
Home Health Aide (Postsecondary)	2
Hospitality and Tourism	2
Industrial Electricity	2
Marine Service Technology 2	2
Nursery Management	2
Arts, A/V Technology and Communication Cooperative Education - OJT	1
Carpentry 2	1
Electrician	1
Interior Decor Fabrication	1
Medium and Heavy Duty Truck and Bus Technician 2	1
Sport, Recreation, and Entertainment Marketing	1
Total	6,334

Source: Workforce Development Information System