



FLORIDA DEPARTMENT OF
EDUCATION
fldoe.org

2019-20 Education Appropriations



Funded by the Educational
Enhancement (Lottery)
Trust Fund

February 2020

This page left blank intentionally.

TABLE OF CONTENTS

	Page
History and Policy: The Florida Lottery and Education.....	1
Educational Enhancement (Lottery) Trust Fund Appropriations by Fiscal Year	3
Educational Enhancement (Lottery) Trust Fund Appropriations, Operating and Capital Outlay	4
Appropriations from the Educational Enhancement (Lottery) Trust Fund	
2018-19 and 2019-20	6
2015-16, 2016-17, 2017-18	7
2012-13, 2013-14 and 2014-15.....	8
2009-10, 2010-11 and 2011-12.....	9
2006-07, 2007-08 and 2008-09.....	10
2003-04, 2004-05 and 2005-06.....	11
1999-00, 2000-01, 2001-02 and 2002-03	12
1995-96, 1996-97, 1997-98 and 1998-99	13
1991-92, 1992-93, 1993-94 and 1994-95	14
1989-90 and 1990-91	15
1987-88 and 1988-89	17
2019-20 Programs and Projects Funded from the Educational Enhancement (Lottery) Trust Fund	
Public School System	18
Florida Colleges	22
State Universities	24
Student Financial Aid	26
Educational Enhancement (Lottery) Trust Fund and Total Operating Funds for Education.....	28
2019-20 Educational Enhancement (Lottery) Trust Fund Allocations for Operations.....	29
2019-20 FEFP Second Calculation	
District Discretionary Lottery Funds	30
Florida School Recognition Program.....	30
Bright Futures Scholarship Program Student Disbursements by County and Year	31
K-12 Public School Capital Outlay Construction Bonds.....	34
Historical Analysis of the General Revenue Fund.....	35
Educational Enhancement Trust Fund Financial Outlook Statement	36

HISTORY AND POLICY: THE FLORIDA LOTTERY AND EDUCATION

On November 4, 1986, a constitutional amendment was passed in a statewide election, creating [Article X, section 15](#), of the Constitution of the State of Florida, providing for the operation of a state lottery. Of the 3,208,295 voters who voted on the amendment, 2,039,437, or 63.57 percent, voted for the amendment, while 1,168,858, or 36.43 percent, voted against it.

The 1987 Legislature enacted the Florida Public Education Lottery Act, codified as [chapter 87-65, Laws of Florida \(L.O.F.\)](#) to implement the constitutional amendment. [Section 24.102\(2\), Florida Statutes \(F.S.\)](#), expresses the intent of the Florida Legislature for the lottery to generate additional funds for education to be administered by a self-supporting, revenue-producing state department that functions as much as possible as a business enterprise. The Florida Public Education Lottery Act also created [s. 24.121, F.S.](#), which governs the allocation of revenues and expenditures of lottery tickets.

[Section 1010.70, F.S.](#), requires the Florida Department of the Lottery to determine variable percentages of the revenue generated from the sale of lottery tickets, not including application processing fees, to be deposited in to the Educational Enhancement Trust Fund (EETF). These funds are used to support the programs described beginning on page 18 as determined annually by the Florida Legislature.

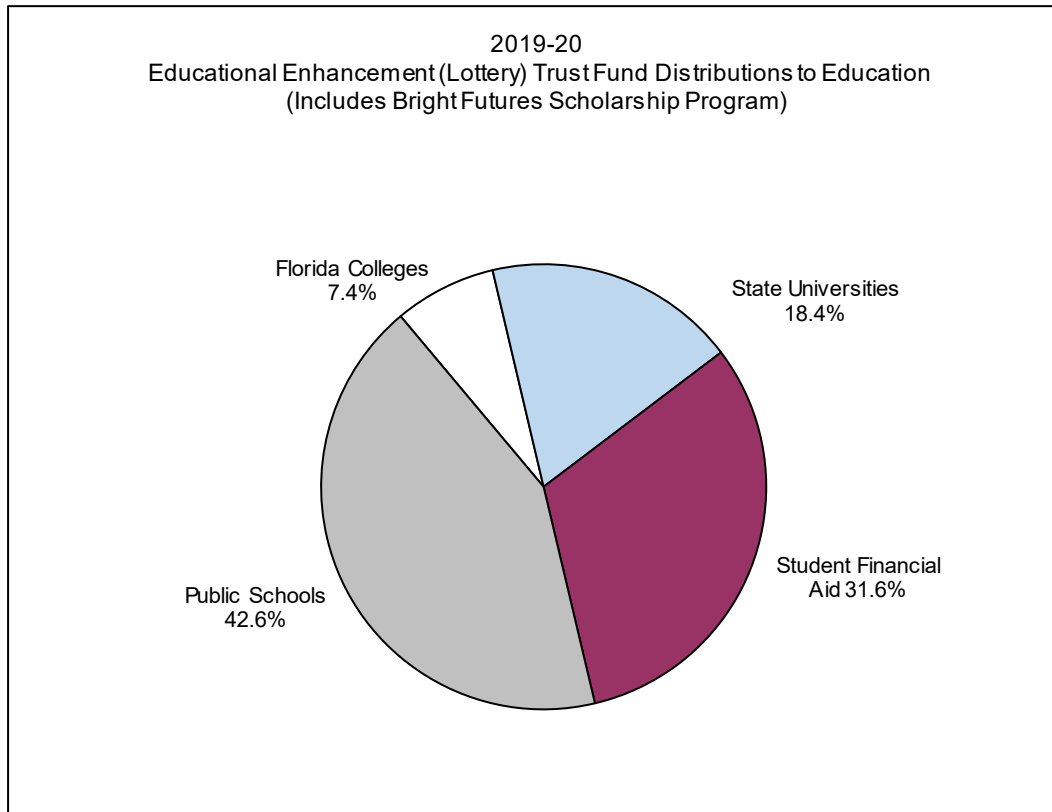
Taxes paid on slot machine revenues provide another source of proceeds for the EETF. [Section 551.106\(2\), F.S.](#), establishes a tax rate on slot machine revenues of 35 percent and requires that these proceeds go into the EETF.

In addition to transfers into the EETF from lottery proceeds, another source of revenue for the EETF is dealer collection allowances. [Section 212.12\(1\)\(d\)1., F.S.](#), states that sales and use tax dealers that are entitled to a collection allowance as compensation for keeping prescribed records, filing timely returns, conducting proper accounting and remitting taxes on time may elect to donate their collection allowance to the EETF.

The remaining funds from lottery proceeds, after deductions are made to pay prizes and for education programs, are to be used to pay the expenses of running the lottery. If any funds are left unencumbered at the end of each fiscal year, the balance must be transferred to the EETF in accordance with [s. 24.121, F.S.](#)

In [chapter 97-77, L.O.F.](#), the 1997 Legislature established the Florida Bright Futures Scholarship Program, with the intention that all components of the program be funded from the EETF ([s. 1009.53, F.S.](#)). Bright Futures appropriations are funded first, and the remainder of the funds is distributed to the education delivery systems. For 2019-20, 42.6 percent will be distributed to school districts, 7.4 percent to the Florida College System,

18.4 percent to the state universities, 28.5 percent to Bright Futures and 3.1 percent to other student financial need.



As part of the Soundly-Made, Accountable, Reasonable and Thrifty (SMART) Schools Act of 1997, the legislature established a 20-year capital outlay funding program designed to provide approximately \$2 billion in lottery funds to school districts for the construction of permanent classrooms. Under this act, the Classrooms First Program, the Effort Index and Small County Assistance programs were created to alleviate overcrowding in Florida's public schools and the need for relocatable or portable classrooms. These programs were mainly funded through the issuance of bonds supported by lottery revenues.

Other programs supported by lottery revenues include the Classrooms for Kids and the District Effort Recognition Programs, which were established by the 2003 Legislature to provide funding for class size reduction projects so that school districts could comply with the constitutional provisions for reducing class sizes. To date, the legislature has granted over \$2 billion in fixed capital outlay appropriations funded through the issuance of bonds supported by lottery revenues for this purpose.

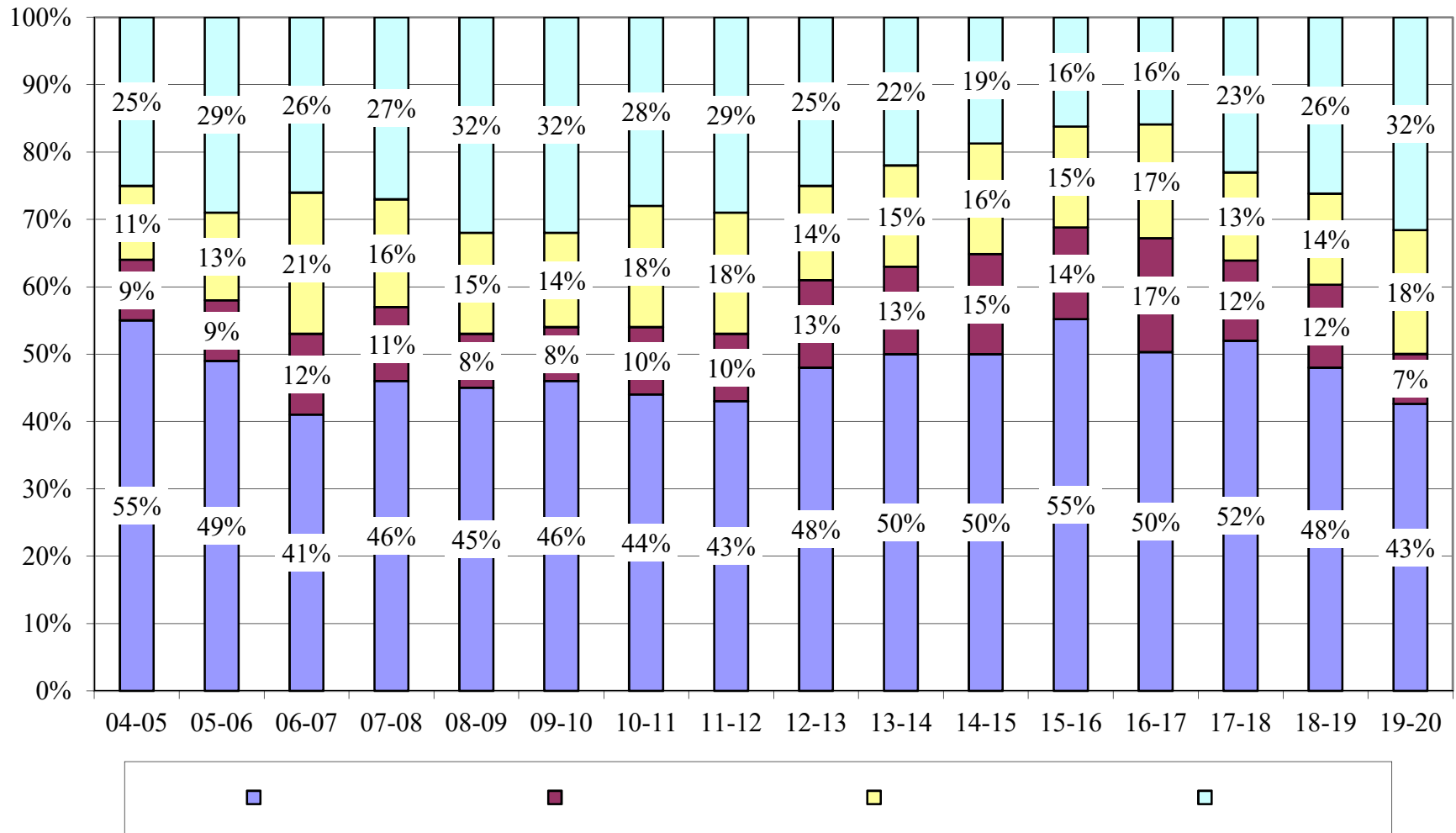
EDUCATIONAL ENHANCEMENT (LOTTERY) TRUST FUND
Appropriations By Fiscal Year

Fiscal Year	Public Schools ⁽¹⁾	Florida Colleges	State Universities	Other ⁽²⁾	Total Appropriations
1987-88	\$ 84,902,081	\$ 20,160,701	\$ 32,254,063	\$ 7,175,081	\$ 144,491,926
1988-89	258,596,804	38,091,575	24,807,400	6,169,402	327,665,181
1989-90	678,145,713	79,728,147	141,354,226	252,627,355	1,151,855,441
1990-91	748,942,205	88,711,838	142,008,682	22,521,915	1,002,184,640
1991-92	597,070,000	127,915,000	127,915,000	-	852,900,000
1992-93	584,000,000	125,200,000	125,200,000	-	834,400,000
1993-94	601,000,000	128,900,000	128,900,000	-	858,800,000
1994-95	664,200,000	142,300,000	142,300,000	-	948,800,000
1995-96	580,230,000	124,350,000	124,400,000	-	828,980,000
1996-97	570,290,000	126,210,000	132,210,000	-	828,710,000
1997-98	518,995,289	111,379,348	111,229,348	80,000,000	821,603,985
1998-99	476,290,000	102,055,000	113,832,965	120,000,000	812,177,965
1999-00	453,101,000	97,170,000	104,067,504	130,000,000	784,338,504
2000-01	554,300,000	102,200,000	102,198,463	162,500,000	921,198,463
2001-02	576,410,000	98,679,510	98,679,510	221,415,980	995,185,000
2002-03	514,471,506	101,346,245	110,028,746	243,653,494	969,499,991
2003-04	614,600,000	124,079,148	163,968,799	256,112,881	1,158,760,828
2004-05	650,039,045	98,900,000	129,771,266	301,451,153	1,180,161,464
2005-06	556,776,676	106,800,000	144,700,000	329,900,000	1,138,176,676
2006-07	599,095,913	175,008,007	297,171,620	367,790,000	1,439,065,540
2007-08	709,795,379	161,401,183	239,024,125	422,299,817	1,532,520,504
2008-09	659,166,312	124,770,300	219,373,906	474,142,852	1,477,453,370
2009-10	651,508,725	116,959,158	201,172,732	454,227,268	1,423,867,883
2010-11	569,542,395	126,959,158	230,671,087	373,442,455	1,300,615,095
2011-12	587,820,636	130,359,158	253,924,085	400,688,958	1,372,792,837
2012-13	721,106,532	187,372,446	202,786,832	379,818,490	1,491,084,300
2013-14	803,287,420	209,534,163	236,823,731	359,823,381	1,609,468,695
2014-15	871,843,513	259,566,406	286,856,489	326,601,507	1,744,867,915
2015-16	1,014,308,598	249,497,224	275,609,599	297,823,973	1,837,239,394
2016-17	910,680,335	306,424,522	306,424,522	287,544,574	1,811,073,953
2017-18	1,031,972,911	236,346,325	259,684,809	456,683,491	1,984,687,536
2018-19	1,080,409,284	276,770,172	304,622,389	588,821,301	2,250,623,146
2019-20	888,787,427	154,814,894	383,331,415	659,656,382	2,086,590,118

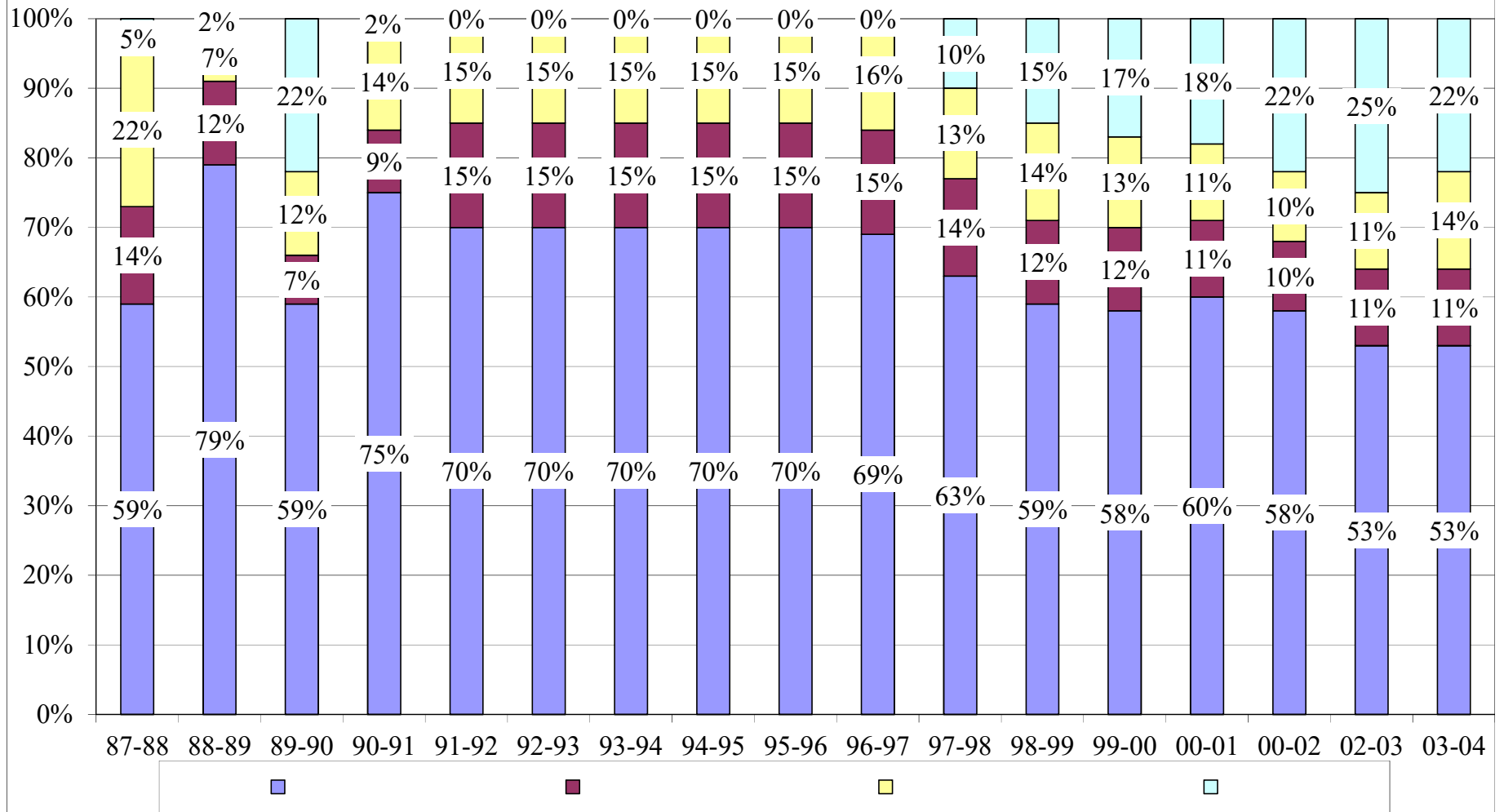
⁽¹⁾ Additional fixed capital outlay appropriations were received in the Lottery Capital Outlay Trust Fund for bonded projects to reduce class size. These appropriations were funded through the issuance of bonds supported by lottery revenues.

⁽²⁾ For 2002-03 and 2004-05, "Other" category did not consist entirely of Student Financial Aid.

Educational Enhancement (Lottery) Trust Fund Appropriations Operating and Capital Outlay



**Educational Enhancement (Lottery) Trust Fund Appropriations
Operating and Capital Outlay (Continued)**



**EDUCATIONAL ENHANCEMENT (LOTTERY) TRUST FUND
2018-19 and 2019-20 Appropriations**

	2018-19	2019-20
Public Schools		
Class Size Reduction	\$ 103,776,356	\$ 103,776,356
Class Size Reduction Lottery Capital Outlay Program (Debt Service) ¹	133,524,413	133,387,970
Classrooms First Bond Program (Debt Service and Projects) ¹	101,307,519	82,328,303
Florida Education Finance Program	519,245,433	353,358,911
School District Discretionary Lottery Funds ² /School Recognition	134,582,877	134,582,877
	992,436,598	807,434,417
Workforce Education (non-FEFP)	87,972,686	81,353,010
	87,972,686	81,353,010
Florida Colleges		
Florida College System Program Funds ²	272,175,155	150,218,929
Educational Facilities (Debt Service)	4,595,017	4,595,965
	276,770,172	154,814,894
State Universities		
Education and General Activities ²	274,282,404	342,732,781
UF - Institute of Food and Agricultural Sciences	12,533,877	17,079,571
University of South Florida Medical Center	9,349,672	12,740,542
University of Florida Health Center	5,796,416	7,898,617
Florida State University Medical School	605,115	824,574
Educational Facilities (Debt Service)	2,054,905	2,055,330
	304,622,389	383,331,415
Student Financial Aid		
Florida's Bright Futures Scholarship Program	519,058,661	595,143,167
First Generation in College Matching Grant Program	0	0
Other State Student Financial Aid	69,762,640	64,513,215
	588,821,301	659,656,382
Total Department	\$ 2,250,623,146	\$ 2,086,590,118

1. Additional fixed capital outlay appropriations were received in the Lottery Capital Outlay Trust Fund for projects to reduce class size. These appropriations are funded through the issuance of bonds supported by lottery revenues. The debt service reflects payments on the bonds.
2. District School Boards, Florida College System Board of Trustees and State University System Board of Trustees determine the expenditure of these funds to enhance education.

EDUCATIONAL ENHANCEMENT (LOTTERY) TRUST FUND
2015-16, 2016-17 and 2017-18 Appropriations

	2015-16	2016-17	2017-18
Public Schools			
Class Size Reduction	\$ 103,776,356	\$ 103,776,356	\$ 103,776,356
Class Size Reduction Lottery Capital Outlay Program (Debt Service) ¹	151,262,548	151,265,624	143,845,811
Classrooms First Bond Program (Debt Service and Projects) ¹	155,820,162	155,786,420	170,305,246
Florida Education Finance Program	219,369,431	276,772,458	404,555,678
School District Discretionary Lottery Funds ² /School Recognition	134,582,877	134,582,877	134,582,877
	<u>764,811,374</u>	<u>822,183,735</u>	<u>957,065,968</u>
Workforce Education (non-FEFP)	79,157,830	88,496,600	74,906,943
	<u>79,157,830</u>	<u>88,496,600</u>	<u>74,906,943</u>
Florida Colleges			
Florida College System Program Funds ²	244,903,227	273,796,073	231,751,579
Educational Facilities (Debt Service)	4,593,997	4,595,500	4,594,746
	<u>249,497,224</u>	<u>278,391,573</u>	<u>236,346,325</u>
State Universities			
Education and General Activities ²	245,270,069	276,084,320	229,344,945
UF - Institute of Food and Agricultural Sciences	12,533,877	12,533,877	12,533,877
University of South Florida Medical Center	9,349,672	9,349,672	9,349,672
University of Florida Health Center	5,796,416	5,796,416	5,796,416
Florida State University Medical School	605,115	605,115	605,115
Educational Facilities (Debt Service)	2,054,450	2,055,122	2,054,784
	<u>275,609,599</u>	<u>306,424,522</u>	<u>259,684,809</u>
Student Financial Aid			
Florida's Bright Futures Scholarship Program	239,800,000	217,366,468	397,282,030
First Generation in College Matching Grant Program	5,308,663	5,308,663	0
Other State Student Financial Aid	52,715,310	64,869,443	59,401,461
	<u>297,823,973</u>	<u>287,544,574</u>	<u>456,683,491</u>
Total Department	<u>\$ 1,666,900,000</u>	<u>\$ 1,783,041,004</u>	<u>\$ 1,984,687,536</u>

1. Additional fixed capital outlay appropriations were received in the Lottery Capital Outlay Trust Fund for projects to reduce class size. These appropriations are funded through the issuance of bonds supported by lottery revenues. The debt service reflects payments on the bonds.
2. District School Boards, Florida College System Board of Trustees and State University System Board of Trustees determine the expenditure of these funds to enhance education.

EDUCATIONAL ENHANCEMENT (LOTTERY) TRUST FUND
2012-13, 2013-14 and 2014-15 Appropriations

	2012-13	2013-14	2014-15
Public Schools			
Class Size Reduction	\$ 103,776,356	\$ 103,776,356	\$ 103,776,356
Class Size Reduction Lottery Capital Outlay Program (Debt Service) ¹	154,482,900	153,806,836	152,836,215
Classrooms First Bond Program (Debt Service and Projects) ¹	156,801,400	156,011,746	155,882,941
Florida Education Finance Program	122,740,767	197,752,820	242,352,820
School District Discretionary Lottery Funds ² /School Recognition	134,582,877	134,582,877	134,582,877
	<u>672,384,300</u>	<u>745,930,635</u>	<u>789,431,209</u>
Workforce Education (non-FEFP)	48,722,232	57,356,785	82,412,304
	<u>48,722,232</u>	<u>57,356,785</u>	<u>82,412,304</u>
Florida Colleges			
Florida College System Program Funds ²	180,808,060	204,938,935	254,972,113
Educational Facilities (Debt Service)	6,564,386	4,595,228	4,594,293
	<u>187,372,446</u>	<u>209,534,163</u>	<u>259,566,406</u>
State Universities			
Education and General Activities ²	171,566,138	206,483,766	256,516,943
UF - Institute of Food and Agricultural Sciences	12,533,877	12,533,877	12,533,877
University of South Florida Medical Center	9,349,672	9,349,672	9,349,672
University of Florida Health Center	5,796,416	5,796,416	5,796,416
Florida State University Medical School	605,115	605,115	605,115
Educational Facilities (Debt Service)	2,935,614	2,054,885	2,054,466
	<u>202,786,832</u>	<u>236,823,731</u>	<u>286,856,489</u>
Student Financial Aid ³			
Florida's Bright Futures Scholarship Program	329,408,935	309,413,826	266,191,952
First Generation in College Matching Grant Program	5,308,663	5,308,663	5,308,663
Other State Student Financial Aid	45,100,892	45,100,892	55,100,892
	<u>379,818,490</u>	<u>359,823,381</u>	<u>326,601,507</u>
Total Department	<u>\$ 1,491,084,300</u>	<u>\$ 1,609,468,695</u>	<u>\$ 1,744,867,915</u>

1. Additional fixed capital outlay appropriations were received in the Lottery Capital Outlay Trust Fund for projects to reduce class size. These appropriations are funded through the issuance of bonds supported by lottery revenues. The debt service reflects payments on the bonds.
2. District School Boards, Florida College System Board of Trustees and State University System Board of Trustees determine the expenditure of these funds to enhance education.
3. The 2014-15 Student Financial Aid total does not include the \$2,000,000 budget amendment funds allocated to the Benacquisto Scholarship Program (formerly referred to as the Florida National Merit Scholars Incentive Program).

EDUCATIONAL ENHANCEMENT (LOTTERY) TRUST FUND
2009-10, 2010-11 and 2011-12 Appropriations

	2009-10	2010-11	2011-12
Public Schools			
Class Size Reduction	\$ 189,849,480	\$ 103,776,356	\$ 103,776,356
Class Size Reduction Lottery Capital Outlay Program (Debt Service) ¹	151,922,482	154,721,252	154,883,241
Classrooms First Bond Program (Debt Service and Projects) ¹	166,957,717	164,766,967	162,109,596
Florida Education Finance Program	9,036,490	9,036,490	12,327,001
School District Discretionary Lottery Funds ² /School Recognition	129,914,030	129,914,030	119,596,643
	<u>647,680,199</u>	<u>562,215,095</u>	<u>552,692,837</u>
Workforce Education (non-FEFP)	3,828,526	7,327,300	35,127,799
	<u>3,828,526</u>	<u>7,327,300</u>	<u>35,127,799</u>
Community Colleges			
Community College Lottery Funds ²	116,959,158	126,959,158	130,359,158
	<u>116,959,158</u>	<u>126,959,158</u>	<u>130,359,158</u>
State Universities			
Education and General Activities ²	173,816,968	203,274,204	225,687,387
UF - Institute of Food and Agricultural Sciences	12,533,877	12,533,877	12,533,877
University of South Florida Medical Center	8,436,061	8,461,475	9,301,290
University of Florida Health Center	5,796,416	5,796,416	5,796,416
Florida State University Medical School	589,410	605,115	605,115
	<u>201,172,732</u>	<u>230,671,087</u>	<u>253,924,085</u>
Student Financial Aid			
Florida's Bright Futures Scholarship Program	418,878,452	338,367,564	350,000,000
First Generation in College Matching Grant Program	6,848,120	6,574,195	5,588,066
Other State Student Financial Aid	28,500,696	28,500,696	45,100,892
	<u>454,227,268</u>	<u>373,442,455</u>	<u>400,688,958</u>
Total Department	<u>\$ 1,423,867,883</u>	<u>\$ 1,300,615,095</u>	<u>\$ 1,372,792,837</u>

1. Additional fixed capital outlay appropriations were received in the Lottery Capital Outlay Trust Fund for projects to reduce class size. These appropriations are funded through the issuance of bonds supported by lottery revenues. The debt service reflects payments on the bonds.
2. District School Boards, Florida College System Board of Trustees and State University System Board of Trustees determine the expenditure of these funds to enhance education.

EDUCATIONAL ENHANCEMENT (LOTTERY) TRUST FUND
2006-07, 2007-08 and 2008-09 Appropriations

	2006-07	2007-08	2008-09
Public Schools			
Class Size Reduction	\$ 75,718,007	\$ 144,185,962 ³	\$ 114,354,421 ⁴
Class Size Reduction Lottery Capital Outlay Program (Debt Service) ¹	100,310,506	119,710,506 ³	155,000,000
Classrooms First Bond Program (Debt Service and Projects) ¹	167,885,407	166,892,742	166,934,217
District Cost Differential (DCD) Transition Supplement	-	15,000,000	-
Excellent Teaching	-	3,000,000 ³	3,000,000 ⁴
School District Discretionary Lottery Funds ²	125,894,447	100,538,358 ³	65,474,309 ⁴
School Recognition/Merit Schools	129,287,546	157,587,811	147,235,894
School Safety/Emergency Preparedness	-	2,880,000 ³	-
	599,095,913	709,795,379	651,998,841
Workforce Education (non-FEFP)	-	-	7,167,471 ⁴
	-	-	7,167,471
Community Colleges			
Community College Lottery Funds ²	120,000,000	112,252,800 ³	124,770,300 ⁴
Critical Jobs Initiative	20,000,000	-	-
Facilities Matching Program	35,008,007	-	-
Florida's Two Plus Two Public and Private Partnerships	-	489,600 ³	-
Program Challenge Grants	-	48,658,783	-
	175,008,007	161,401,183	124,770,300
State Universities			
Education and General Activities ²	157,843,843	149,410,324 ³	195,717,966 ⁴
UF - Institute of Food and Agricultural Sciences	9,320,592	8,371,768 ³	11,365,268 ⁴
University of South Florida Medical Center	2,698,719	2,590,770 ³	4,241,041
University of Florida Health Center	7,165,799	4,311,167 ³	7,026,684
Florida State University Medical School	3,132	3,132	1,022,947
Facility Enhancement Challenge Grants	55,971,620	-	-
Program Challenge Grants	64,167,915	74,336,964	-
	297,171,620	239,024,125	219,373,906
Student Financial Aid			
Florida's Bright Futures Scholarship Program	346,342,906	383,185,153 ³	435,275,538 ⁴
First Generation in College Matching Grant Program	-	8,245,000 ³	7,997,650
Other State Student Financial Aid	21,447,094	30,869,664	30,869,664
	367,790,000	422,299,817	474,142,852
Total Department	<u>\$ 1,439,065,540</u>	<u>\$ 1,532,520,504</u>	<u>\$ 1,477,453,370</u>

1. Additional fixed capital outlay appropriations were received in the Lottery Capital Outlay Trust Fund for projects to reduce class size. These appropriations are funded through the issuance of bonds supported by lottery revenues. The debt service reflects payments on the bonds.
2. District School Boards, Community College Board of Trustees and State University System Board of Trustees determine the expenditure of these funds to enhance education.
3. Changes in original appropriations were made in 2007-08 Special Session C and the Special Appropriations Act for Fiscal Year 2007-08. Please see chapter 2007-326, L.O.F., and chapter 2008-1, L.O.F.
4. Changes in original appropriations were made in 2008-09 Special Session A, some of which were vetoed by the Governor. Additional changes to the appropriations were made in the September 10, 2008, Legislative Budget Commission Meeting, and the June 17, 2009, Legislative Budget Commission Meeting.

EDUCATIONAL ENHANCEMENT (LOTTERY) TRUST FUND
2003-04, 2004-05 and 2005-06 Appropriations

	2003-04	2004-05	2005-06
Public Schools			
Assistance to Low-Performing Schools	\$ 998,000	\$ 5,500,000	\$ -
Class Size Reduction	80,000,007	97,904,975	75,718,007
Class Size Reduction Lottery Capital Outlay Program (Debt Service) ¹	56,000,000	43,902,077	43,902,077
Classrooms First Bond Program (Debt Service and Projects) ¹	169,000,000	169,000,000	169,000,000
Education Partnerships	-	4,000,000	-
Excellent Teaching	475,000	-	-
Florida Information Resource Network/Reading	-	7,850,221	-
Florida School for the Deaf and Blind	130,000	-	-
Instructional Technology	-	1,000,000	-
K-8 Virtual Education	4,800,000	4,640,000	-
Mentoring/Student Assistance Initiatives	12,250,000	13,895,000	-
Public School Technology	2,250,000	-	-
Reading Programs	-	38,149,779	-
School and Instructional Enhancements	160,000	660,000	-
School District Discretionary Lottery Funds ²	123,449,842	103,449,842	146,240,454
School Recognition/Merit Schools	140,000,000	160,000,000	117,209,388
Supplemental Academic Instruction	25,000,000	-	-
Teacher Professional Development	87,151	87,151	-
	<u>614,600,000</u>	<u>650,039,045</u>	<u>552,069,926</u>
Workforce Education			
Critical Jobs Initiative	-	-	4,706,750
	<u>-</u>	<u>-</u>	<u>4,706,750</u>
Community Colleges			
Community College Lottery Funds ²	93,900,000	98,900,000	101,100,000
Critical Jobs Initiative	-	-	5,700,000
Facilities Matching Program	-	-	-
Program Challenge Grants	30,179,148 ³	-	-
	<u>124,079,148</u>	<u>98,900,000</u>	<u>106,800,000</u>
State Universities			
Education and General Activities ²	86,731,478	111,473,560	122,286,758
UF - Institute of Food and Agricultural Sciences	5,087,910	9,563,810	8,720,592
University of South Florida Medical Center	2,601,539	2,698,719	2,698,719
University of Florida Health Center	4,132,041	4,490,799	4,490,799
Florida State University Medical School	3,132	3,132	3,132
Facility Enhancement Challenge Grants	-	-	-
Challenge Grants	65,412,699 ³	1,541,246	6,500,000
	<u>163,968,799</u>	<u>129,771,266</u>	<u>144,700,000</u>
State Board of Education			
Assessment and Evaluation	-	5,000,000	-
Total	<u>-</u>	<u>5,000,000</u>	<u>-</u>
Student Financial Aid			
Florida's Bright Futures Scholarship Program	235,688,631	275,989,784 ⁴	311,772,580
Other State Student Financial Aid	20,424,250	20,461,369	18,127,420
	<u>256,112,881</u>	<u>296,451,153</u>	<u>329,900,000</u>
Total Department	<u>\$ 1,158,760,828</u>	<u>\$ 1,180,161,464</u>	<u>\$ 1,138,176,676</u>

1. Additional fixed capital outlay appropriations were received in the Lottery Capital Outlay Trust Fund for bonded projects to reduce class size appropriations are funded through the issuance of bonds supported by lottery revenues. The debt service reflects payments on the bonds.
2. District School Boards, Community College Board of Trustees and State University System Board of Trustees determine the expenditure of the enhance education.
3. Includes \$6,179,148 for Community Colleges and \$23,968,779 for Universities for Challenge Grants from House Bill 43E.
4. In 2004-05, a \$7,883,680 budget amendment to Bright Futures was approved.

EDUCATIONAL ENHANCEMENT (LOTTERY) TRUST FUND
1999-00, 2000-01, 2001-02 and 2002-03 Appropriations

	1999-00	2000-01	2001-02	2002-03
Public Schools				
School District Discretionary Lottery Funds ¹	\$ 151,176,000	\$ 190,125,000	\$ 195,250,000	\$ 184,155,000
School Recognition/Merit Schools ²	15,000,000	60,000,000	113,500,000	122,770,000
Classrooms First Bond Program (Debt Service and Projects)	180,000,000	180,000,000	180,000,000	180,000,000
Assistance to Low Performing Schools	-	17,250,000	3,776,000 ³	-
Pre-School Coalition Incentive Funds	2,085,000	2,085,000	-	-
School Readiness Partnership	1,075,000	1,075,000	-	-
Pre-School Projects	103,765,000	103,765,000	-	-
Public School Technology	-	-	62,400,000	-
Reading Programs	-	-	-	-
Mentoring/Student Assistance Initiatives	-	-	12,390,000 ³	12,300,000 ⁴
Communities in Schools	-	-	1,000,000	-
Teacher Professional Development	-	-	-	-
School and Instructional Enhancements	-	-	489,790 ³	-
Teacher Training	-	-	7,354,210	-
Excellent Teaching	-	-	-	10,246,506
Extended School Year	-	-	-	5,000,000
Exceptional Education	-	-	-	-
Teacher Recruitment Campaign	-	-	250,000	-
Total	453,101,000	554,300,000	576,410,000	514,471,506
Community Colleges				
Community College Lottery Funds ¹	95,170,000	102,200,000	94,687,500	92,900,000
Performance Based Incentive Programs	2,000,000	-	-	-
Information Technology Enhancement Grants	-	-	1,992,010	8,446,245
Library Automation	-	-	2,000,000	-
Total	97,170,000	102,200,000	98,679,510	101,346,245
State Universities				
Education and General Activities ¹	75,809,222	89,509,540	81,849,166	84,762,878
UF-Institute of Food and Agricultural Sciences	9,047,048	5,322,263	5,445,038	5,087,910
University of South Florida Medical Center	4,224,159	2,898,477	2,822,040	2,601,539
University of Florida Health Center	8,089,571	4,468,183	4,571,256	4,132,041
Florida State University Medical School	-	-	-	3,132
I-4 Corridor/High Technology Research	-	-	-	5,000,000
Board of Governors - Challenge Grants	6,897,504	-	3,992,010	8,441,246
Total	104,067,504	102,198,463	98,679,510	110,028,746
State Board of Education				
Bright Futures Testing Program	-	-	-	7,905,600
Total	-	-	-	7,905,600
Student Financial Aid				
Florida's Bright Futures Scholarship Program	130,000,000	143,100,000	202,000,000	218,970,000
Other State Student Financial Aid	-	19,400,000	19,415,980	16,777,894
Total	130,000,000	162,500,000	221,415,980	235,747,894
Total Department	\$ 784,338,504	\$ 921,198,463	\$ 995,185,000	\$ 969,499,991

1 District School Boards, Community College Board of Trustees and State University System Board of Trustees determine the expenditure of these funds to enhance education.

2 In 1999-00, an additional \$15 million budget amendment was approved.

In 2000-01, an additional \$24 million budget amendment was approved.

3 Assistance to Low Performing Schools, vetoed \$3,280,000; Reading Programs, vetoed \$1,731,428; Mentoring/Student Assistance Initiatives, vetoed \$1,425,000; Teacher Professional Development, vetoed \$1,250,000; School and Instructional Enhancements, vetoed \$6,843,572; Exceptional Education, vetoed \$600,000. The net decrease to the original appropriation was \$15,130,000, for an adjusted appropriation total of \$930,870,000.

4 Mentoring/Student Assistance Initiatives, vetoed \$300,000.

EDUCATIONAL ENHANCEMENT (LOTTERY) TRUST FUND
1995-96, 1996-97, 1997-98 and 1998-99 Appropriations
1997-98 Revised Pursuant to House Bill 17-A

	1995-96	1996-97	1997-98	1998-99
Public Schools				
School District Discretionary Lottery Funds ¹	\$ 476,062,645	\$ 463,290,000	\$ 232,070,289	\$ 183,975,000
School Recognition/Merit Schools	-	-	-	5,390,000
Classrooms First Bond Program (Debt Service and Projects)	-	-	180,000,000	180,000,000
Coalition Incentive Funds	-	-	-	3,000,000
Technology Matching Grants	-	-	2	-
Pre-School Projects	104,167,355	107,000,000	106,925,000	103,925,000
Total	<u>580,230,000</u>	<u>570,290,000</u>	<u>518,995,289</u>	<u>476,290,000</u>
Community Colleges				
Community College Lottery Funds ¹	116,550,000	120,660,000	109,229,348	98,900,000
Community College Endowment	2,750,000	2,750,000	-	-
Nursing Education Challenge Grant Fund	800,000	800,000	-	-
Incentive Grants - Expanded Program	2,250,000	-	-	-
Endowment Matching Fund	-	-	-	1,155,000
Performance Based Incentive Program	2,000,000	2,000,000	2,000,000	2,000,000
Transfer to FIRN	-	-	150,000	-
Total	<u>124,350,000</u>	<u>126,210,000</u>	<u>111,379,348</u>	<u>102,055,000</u>
State Universities				
State University System Lottery Funds ¹	122,150,000	127,210,000	-	-
Education and General Activities ¹	-	-	88,167,837	78,065,877
UF-Institute of Food and Agriculture Sciences	-	-	9,718,244	9,628,107
University of South Florida Medical Center	-	-	4,578,866	4,531,456
University of Florida Health Center	-	-	8,764,401	8,674,560
Challenge Grants	2,250,000	5,000,000	-	12,932,965
Total	<u>124,400,000</u>	<u>132,210,000</u>	<u>111,229,348</u>	<u>113,832,965</u>
Student Financial Aid				
Florida's Bright Futures Scholarship Program	-	-	75,000,000	120,000,000
Prepaid Tuition Scholarships	-	-	2,000,000	-
Minority Teacher Scholarship Program	-	-	3,000,000	-
Total	<u>-</u>	<u>-</u>	<u>80,000,000</u>	<u>120,000,000</u>
Total Department	<u>\$ 828,980,000</u>	<u>\$ 828,710,000</u>	<u>\$ 821,603,985</u>	<u>\$ 812,177,965</u>

1. District School Boards, Community College Board of Trustees and State University System Board of Trustees determine the expenditure of these funds to enhance education.

2. \$5,000,000 Vetoed

Notes:

Due to a revenue shortfall in 1995-96, appropriations were reduced as follows: Public Schools, \$3,080,000; Community Colleges, \$660,000; and State Universities, \$660,000.

Due to a revenue shortfall in 1996-97, appropriations were reduced as follows: Public Schools, \$10,010,000; Community Colleges, \$2,145,000; and State Universities, \$2,145,000.

EDUCATIONAL ENHANCEMENT (LOTTERY) TRUST FUND
1991-92, 1992-93, 1993-94 and 1994-95 Appropriations

	1991-92	1992-93	1993-94	1994-95
Public Schools				
School District Discretionary Lottery Funds ¹	\$ 505,639,799	\$ 505,427,645	\$ 483,527,645	\$ 502,032,645
Instructional Strategies Enhancement	8,857,846	-	-	-
High Performance Incentive Program	4,000,000	-	-	-
Performance Based Incentive Program	-	-	-	2,000,000
Public School Technology	-	-	38,900,000	56,000,000
Pre-School Projects	78,572,355	78,572,355	78,572,355	104,167,355
Total	<u>597,070,000</u>	<u>584,000,000</u>	<u>601,000,000</u>	<u>664,200,000</u>
Community Colleges				
Community College Lottery Funds ¹	124,365,000	121,650,000	123,851,436	125,782,430
Library Resources	-	-	-	5,429,471
Auxiliary Learning Aids	-	-	-	998,700
Endowment Matching Fund	2,750,000	2,750,000	2,750,000	5,500,000
Library Automation	-	-	1,498,564	989,399
Performance Based Incentive Program	-	-	-	2,000,000
Nursing Education Challenge Grant Fund	800,000	800,000	800,000	1,600,000
Total	<u>127,915,000</u>	<u>125,200,000</u>	<u>128,900,000</u>	<u>142,300,000</u>
State Universities				
State University System Lottery Funds ¹	124,515,000	113,641,421	104,541,421	128,230,000
Library Resources	-	3,258,579	3,258,579	4,565,000
Transfer to Major Gifts Trust Fund	-	-	2,200,000	3,564,920
Transfer to Eminent Scholars Trust Fund	-	-	2,200,000	3,564,920
Student Financial Aid	-	8,300,000	8,300,000	-
Facility Enhancement Challenge Grant	3,400,000	-	8,400,000	2,375,160
Total	<u>127,915,000</u>	<u>125,200,000</u>	<u>128,900,000</u>	<u>142,300,000</u>
Total Department	<u><u>\$ 852,900,000</u></u>	<u><u>\$ 834,400,000</u></u>	<u><u>\$ 858,800,000</u></u>	<u><u>\$ 948,800,000</u></u>

1. District School Boards, Community College Boards of Trustees and State University System Boards of Trustees determine the expenditure of these funds to enhance education.

Note: Due to a revenue shortfall for 1994-95, appropriations were reduced as follows: Public Schools, \$15,890,000; Community Colleges, \$3,405,000; and State Universities, \$3,405,000.

**EDUCATIONAL ENHANCEMENT (LOTTERY) TRUST FUND
1989-90 and 1990-91 Appropriations**

	1989-90	1990-91
Public Schools		
Florida Education Finance Program	\$ 456,234,934	\$ 534,569,316
Transportation	18,000,000	14,795,770
School Bus Replacement	20,000,000	15,500,000
Instructional Materials	10,000,000	22,622,442
Compensatory Education	639,822	2,601,879
Diagnostic and Learning Resource Centers	33,262	134,100
Community Schools	1,300,000	1,300,000
Student Development Services	621,562	672,831
School Volunteer Program	100,000	102,070
PREP (K-3 Improvement)	13,069,151	15,230,461
Writing Skills	590,562	603,446
Summer Inservice Institutes	11,250,000	812,500
Safe Schools/School Resource Officers	362,237	4,630,825
Regional Centers of Excellence	425,000	555,699
School Principals Inservice Training	394,060	-
Teachers As Advisors	646,132	678,439
Dropout Prevention	8,194,153	4,596,756
Middle Childhood (PRIME)	31,327,205	33,755,539
Merit Schools	10,000,000	-
In-School Child Care	1,500,000	1,389,248
Elementary School Foreign Language	2,754,396	2,684,336
Pre-School Projects	49,187,748	47,268,878
Math/Science/Computer Plan	350,000	300,000
Instructional Technology	11,000,000	21,480,020
Middle School Advisement	1,976,000	2,846,800
Literacy Centers	300,000	300,000
Curriculum Development and Renewal	335,000	-
Education Improvement Grants	225,000	100,000
Education/Business Cooperation	1,280,000	1,860,000
Restructuring Learning	750,000	1,000,000
Model Schools Consortium	2,000,000	-
International Science Fair	100,000	-
Governor's Summer Colleges Program	250,000	231,541
Interagency Student Services/Cities in Schools	500,000	-
High Performance Incentive Program	10,000,000	2,924,732
Panhandle Area Ed Coop	250,000	-
School Board Training	125,000	-
Summer Science Teacher Training	500,000	-
Math & Science Stipends	750,000	500,000
Library Media Materials	10,785,614	10,452,341
Teacher of the Year	29,250	-
School Related Person of the Year	9,625	-
Blueprint for Career Preparation	-	2,329,736
Pre-Teachers and Teacher Education Pilot Projects	-	112,500
Total	678,145,713	748,942,205
Community Colleges		
Community College Program Fund	47,369,298	63,833,981
Endowment Matching Fund	2,750,000	2,750,000
General Office	30,000	160,000
Instructional Equipment	4,841,689	4,841,689
Sunshine State Skills Program	3,931,202	1,506,881
Community College M.I.S.	40,000	-
Library Automation	3,000,000	3,000,000
Literacy Centers	400,000	500,000
Deferred Maintenance	2,500,000	2,500,000
Quality Improvements ¹	3,000,000	2,000,000
Learning Resource Centers Materials	6,000,000	6,000,000
Program Reviews	4,515,958	475,000
Technology Transfer Centers	650,000	-
Nursing Education Challenge Grant Fund	500,000	800,000
Small and Minority Business Entrepreneurial Center	100,000	-
Miami Book Fair International	100,000	100,000
Microcomputer Education for the Disabled	-	50,000
Appleton Museum - Central Florida Community College	-	194,287
Total	79,728,147	88,711,838
State Universities		
Education and General Activities	86,581,022	112,540,656
UF - Institute of Food and Agricultural Sciences	3,726,443	3,250,572
UF - Health Center	5,505,659	3,487,178
USF - Medical Center	1,186,034	1,725,358
General Office	35,349,551	18,432,637
Salary Increases	6,433,236	-
Teacher Education Centers	2,572,281	2,572,281
Total	141,354,226	142,008,682

1. College Level Academic Skills Test (CLAST)

(continued)

**EDUCATIONAL ENHANCEMENT (LOTTERY) TRUST FUND
1989-90 and 1990-91 Appropriations (continued)**

	1989-90	1990-91
Other Postsecondary Programs		
Postsecondary Education Planning Commission	317,155	-
Scholarships and Grants	4,986,200	8,448,056
Auxiliary Learning Aids/PS Handicapped	100,000	1,328,978
College Reach Out Program	794,250	1,200,000
Technological Research & Development Authority	615,800	-
Gold Seal Diploma Scholar	100,000	-
FSU Professor Exchange	40,000	-
Edward Waters Upgrade	-	250,000
Bethune-Cookman Challenger	-	338,411
Bethune-Cookman College of Education	-	338,411
University of Miami Medical School Minority Affairs	-	143,378
Historically Black Colleges/Universities Library Fund	-	193,378
University of Miami Comprehensive Drug Prevention	-	100,000
Edward Waters - Building Restoration Match	-	500,000
Total	<u>6,953,405</u>	<u>12,840,612</u>
Other Programs and Services		
Florida School for the Deaf and the Blind	13,450	25,297
Other State Services	18,430,859	-
Industry Services	405,702	405,702
Vocational Business Exchange Program	150,000	150,000
New World School of the Arts	289,603	179,603
International Education Linkages	500,000	550,000
Hemispheric Policy Study Center	100,000	-
Centers of Agriculture Enhancement	275,420	62,067
Centers of Automotive Enhancement	60,000	600,000
Basic Skills-Vocational Students	662,000	-
Volunteer Literacy Corps	20,000	-
Computer Integrated Manufacturing	300,000	150,000
Endowment for Cuban-American Studies	1,000,000	-
Education Leadership Fund	7,163	-
Public Broadcasting	4,386,057	999,634
Education Outreach/International Volunteer Program	83,718	-
Florida Endowment for the Humanities	100,000	-
Florida Information Resource Network	4,048,569	-
Government Close Up Program	27,500	-
Management Training Act	1,700,000	-
Education Management Improvement	250,000	-
Health Occupations Education Enhancement	-	289,000
Humanities Outreach - Tampa	-	250,000
Total	<u>32,810,041</u>	<u>3,661,303</u>
Fixed Capital Outlay		
Transfer to PECO Trust Fund	49,945,359	-
Transfer to State Infrastructure Trust Fund	150,000,000	-
UF/Biotechnology Center (Planning)	600,000	-
UF/Biotechnology Matching Funds	-	1,550,000
FAU/Davie Campus (s,p,c,e)	2,000,000	-
FIU/Holocaust Center	70,000	-
UF/College of Dentistry Building Completion and Equipment	600,000	-
Sumter County/Bushnell and Wildwood High Schools	150,000	-
Columbia County/Columbia County High School	1,400,000	-
Union County/Roof Repair	700,000	-
K - 12 Capital Outlay Projects	-	2,405,000
UF/Vet Medicine Teaching Hospital Expansion Phase II	1,750,000	-
UF/Floyd Hall Renovation	2,021,100	-
UF/Library East - Renovation / Restoration	1,900,000	-
USF/Sarasota Caples Project Completion	450,000	-
USF/Center for Economic Education	237,500	-
USF/Eye Institute Completion	360,000	-
USF/Psychiatric Hospital Completion	400,000	-
UWF/Performing Arts Completion	279,950	-
SUS Facility Enhancement Challenge Grants	-	2,065,000
Total	<u>212,863,909</u>	<u>6,020,000</u>
Total Department	<u>\$ 1,151,855,441</u>	<u>\$ 1,002,184,640</u>

**EDUCATIONAL ENHANCEMENT (LOTTERY) TRUST FUND
1987-88 and 1988-89 Appropriations**

	1987-88	1988-89
Public Schools		
Florida Education Finance Program	\$ 20,000,000	\$ 183,000,000
School Bus Replacement	5,000,000	-
Council on Environmental Education	-	18,000
PREP (K-3 Improvement)	8,500,000	9,677,414
Summer Inservice Institutes	9,925,210	9,725,210
Regional Centers of Excellence	-	425,000
Dropout Prevention	2,563,000	1,485,000
Middle Childhood (PRIME)	15,000,000	15,000,000
Master Teacher Program	13,113,871	-
Merit Schools	10,000,000	10,000,000
Literacy Centers	300,000	150,000
Pre-School Projects	-	23,050,000
Curriculum Development and Renewal	-	235,000
Florida Dropout Identification System	-	50,000
Governor's Summer Colleges Program	-	250,000
Library Media Materials	-	5,531,180
Compact Pilot Program	500,000	-
Total	84,902,081	258,596,804
Community Colleges		
Community College Program Fund	2,840,484	15,927,578
Endowment Matching Fund	2,000,000	-
General Office	70,653	23,400
Instructional Equipment	5,116,689	4,846,689
Library Books	1,760,500	-
Student Articulation System-Administration	72,375	-
Sunshine State Skills Program	3,000,000	3,985,702
Community College M.I.S.	-	40,000
Hispanic Vocational Program	-	100,000
Library Automation	-	310,750
Literacy Centers	400,000	200,000
Deferred Maintenance	4,900,000	2,000,000
Quality Improvements	-	3,337,196
Community College Student Data	-	1,000,020
Learning Resource Centers Materials	-	4,535,240
Program Reviews	-	1,785,000
Total	20,160,701	38,091,575
State Universities		
Education and General Activities	9,561,600	15,818,000
UF-Institute of Food and Agricultural Sciences	1,783,006	830,137
USF-Florida Medical Center	265,403	291,943
University of Florida Health Center	837,054	695,039
General Office	19,750,000	4,600,000
Florida Mental Health Institute	57,000	-
Teacher Education Centers	-	2,572,281
Total	32,254,063	24,807,400
Other Postsecondary Programs		
Scholarships and Grants	-	2,976,200
Auxiliary Learning Aids/PS Handicapped	-	100,000
Enhance Electronics	-	512,500
Total	-	3,588,700
Other Programs and Services		
Truck Drivers Training Program	1,662,500	475,000
Vocational Business Exchange Program	150,000	150,000
International Education Linkages	300,000	-
Hemispheric Policy Study Center	200,000	100,000
Other State Services	-	400,000
Industry Services	-	405,702
Centers of Agriculture Enhancement	-	50,000
Centers of Automotive Enhancement	-	775,000
Basic Skills - Vocational Students	-	225,000
Total	2,312,500	2,580,702
Fixed Capital Outlay		
Transfer to PECO Trust Fund	4,862,581	-
Total	4,862,581	-
Total Department	\$ 144,491,926	\$ 327,665,181

**2019-20 PROGRAMS AND PROJECTS FUNDED FROM
THE EDUCATIONAL ENHANCEMENT (LOTTERY) TRUST FUND**

PUBLIC SCHOOL SYSTEM

CLASSROOMS FIRST AND 1997 SCHOOL CAPITAL OUTLAY BOND PROGRAMS

EETF: Chapter 2019-115, L.O.F., Specific Appropriation 1: \$82,328,303

Funds in Specific Appropriation 1 are for the cash and debt service requirements of the Classrooms First and 1997 School Capital Outlay Bond programs established in chapter 97-384, L.O.F.

Proviso language allows for funds in Specific Appropriation 1 to be transferred using nonoperating budget authority into the Lottery Capital Outlay and Debt Service Trust Fund, pursuant to section 1013.71, F.S., for the payment of debt service and project expenditures. There is appropriated from the Lottery Capital Outlay and Debt Service Trust Fund an amount sufficient to enable the payment of debt service obligations and projects resulting from these transfers.

During the 20-year period of the 1997 School Capital Outlay Bond Program, over \$2.0 billion in revenue was made available to public school districts for the construction of permanent classroom facilities. See page 36 for the authorized project funding by district. The \$82.3 million appropriation in Specific Appropriation 1 is used to pay the annual debt service obligation on the lottery bonds and to provide cash for projects in districts that elected not to participate in the issuance of bonds. Programs funded from the proceeds are described below.

The Classrooms First Program provided funds to school districts for new construction, renovation, remodeling, repair and maintenance of educational facilities. Funds were allocated as follows: 25 percent based on capital outlay full-time equivalent membership, 65 percent based on growth in capital outlay full-time equivalent (FTE) membership and 10 percent based on the “sum of the years’ digits” formula in s. 1013.64(1)(a), F.S. Districts could use the cash from their share of the appropriation for new construction, renovation, remodeling, major repair, maintenance of educational facilities or to pay debt service on bonds issued by the state on their behalf for these purposes. Proceeds from such bond issues were expended first to provide permanent classroom facilities.

The Classrooms First Program was initiated to fund or partially fund the construction of new schools and additions to existing schools in order to provide permanent classroom facilities. This program has been funded through the issuance of revenue bonds supported by lottery revenues. Lottery-based funds have been encumbered and/or expended by the public school districts for capital outlay projects including the construction of new schools and additions to existing schools, as well as the renovation and remodeling of existing schools.

Also funded from the proceeds were the School Infrastructure Thrift (SIT) Program awards, the Small County Assistance Program and Effort Index grants. The SIT program provided incentive grants to districts for savings realized through functional, frugal school construction. The Small County Assistance Program provided funds to school districts in counties with a population under 75,000 that had an urgent need for a school facility or major school building expansion, repairs and renovations, but lacked sufficient resources over a three-year period to complete such projects. The Effort Index Grant Program provided grants to assist districts that demonstrated a specified level of local funding and still had a need to build new student stations. The funds for these programs have also been fully disbursed by the Florida Department of Education to the qualifying districts.

CLASS SIZE REDUCTION LOTTERY - CAPITAL OUTLAY PROGRAM

EETF: Chapter 2019-115, L.O.F., Specific Appropriation 2: \$133,387,970

Proviso language allows for funds provided in Specific Appropriation 2 to be transferred using nonoperating budget authority to the Lottery Capital Outlay and Debt Service Trust Fund, pursuant to s. 1013.71, F.S., for the payment of debt service. There is appropriated from the Lottery Capital Outlay and Debt Service Trust Fund an amount sufficient to enable the payment of debt service resulting from these transfers.

Additionally, proviso language sets forth that funds provided in Specific Appropriation 2 are for fiscal year 2019-20 debt service obligations on all bonds authorized pursuant to s. 1013.737, F.S., including any other continuing payments necessary or incidental to the repayment of the bonds. These funds may be used to refinance any or all bond series if it is in the best interest of the state.

The Class Size Reduction Lottery Capital Outlay Program, referred to as the “Classrooms for Kids Program,” was established in s. 1013.735, F.S., to provide funding to public school districts for the purpose of meeting constitutional class size reduction requirements. Additionally, the District Effort Recognition Program was established to provide funds to eligible public school districts for capital outlay purposes to reduce class size or for any lawful capital outlay purpose if the class size maximum has been met by a qualifying public school district. The first state appropriation for these programs, in an aggregate amount of \$600,000,000, was approved by the Florida Legislature for fiscal year 2003-04. Additional appropriations of \$654,697,990 for fiscal year 2006-07 and \$650,000,000 for fiscal year 2007-08 were approved by the legislature to fund class size reduction projects. These appropriations were funded through the issuance of revenue bonds supported by lottery revenues, with Specific Appropriation 2 being used to pay the annual debt service obligation on outstanding lottery bonds. Additional funds have not been provided for the program since 2007-08. See page 34 for the authorized bonded project funding by district. For fiscal years 2004-05 and 2005-06, class size reduction appropriations were granted from other revenue sources.

FLORIDA EDUCATION FINANCE PROGRAM

EETF: Chapter 2019-115, L.O.F., Specific Appropriation 6: \$353,358,911

In 1973, the Florida Legislature enacted the Florida Education Finance Program (FEFP) and established the state policy on equalized funding to guarantee to each student in the Florida public education system the availability of programs and services appropriate to his or her educational needs that are substantially equal to those available to any similar student notwithstanding geographic differences and varying local economic factors.

To provide equalization of educational opportunity, the FEFP formula recognizes: (1) varying local property tax bases; (2) varying education program costs; (3) varying costs of living; and (4) varying costs for equivalent educational programs due to sparsity and dispersion of the student population. Section 1011.62, F.S., outlines the formula that must be used to calculate funding through the FEFP.

The FEFP is the primary mechanism for funding the operating costs of Florida school districts. A key feature of the FEFP is that it bases financial support for education upon the individual student participating in a particular educational program rather than upon the number of teachers or classrooms. FEFP funds are primarily generated by multiplying the number of (FTE) students in each of the funded education programs by cost factors to obtain weighted FTE students. Weighted FTE students are then multiplied by a base student allocation and by a district cost differential in the major calculation to determine the base funding from state and local FEFP funds.

The FEFP has a total appropriation of \$9,204,663,401 that is funded with \$353,358,911 from the EETF, \$8,762,965,588 from General Revenue and \$88,338,902 from the State School Trust Fund.

CLASS SIZE REDUCTION

EETF: Chapter 2019-115, L.O.F., Specific Appropriation 7: \$103,776,356

These funds are provided to implement the requirements of ss. 1003.03 and 1011.685, F.S. The class size reduction allocation factor for grades pre-kindergarten through grade 3 shall be \$1,314.06, for grades 4 through 8 shall be \$896.32, and for grades 9 through 12 shall be \$898.49. The class size reduction allocation shall be recalculated based on enrollment through the October 2019 FTE survey, except as provided in s. 1003.03(4), F.S. If the total class size reduction allocation is greater than the appropriation in Specific Appropriations 7 and 94, funds shall be prorated to the level of the appropriation based on each district's calculated amount. The Commissioner of Education may withhold disbursement of these funds until a district is in compliance with reporting information required for class size reduction implementation.

Class Size Reduction has a total appropriation of \$3,111,099,382 that is funded with \$103,776,356 from the EETF, \$86,161,098 from the State School Trust Fund and \$2,921,161,928 from General Revenue.

DISTRICT LOTTERY AND SCHOOL RECOGNITION PROGRAM

EETF: Chapter 2019-115, L.O.F., Specific Appropriation 8: \$134,582,877

These funds are provided for the Florida School Recognition Program to be allocated as awards of up to \$100 per student to qualified schools pursuant to s. 1008.36, F.S.

If there are funds remaining after payment to qualified schools, the balance shall be allocated to all school districts based on each district’s K-12 base funding. From these funds, school districts shall allocate up to \$5 per unweighted student to be used at the discretion of the school advisory council pursuant to s. 24.121(5), F.S. If funds are insufficient to provide \$5 per student, the available funds shall be prorated.

WORKFORCE DEVELOPMENT

EETF: Chapter 2019-115, L.O.F., Specific Appropriation 9: \$81,353,010

Funds in Specific Appropriation 9 are provided for school district workforce education programs as defined in s. 1004.02(25), F.S., and are allocated along with other Workforce Development funds in Specific Appropriation 125 as follows:

Alachua	\$530,690
Baker	\$164,735
Bay	\$2,825,894
Bradford	\$718,895
Brevard.....	\$3,650,758
Broward.....	\$76,995,513
Calhoun.....	\$79,002
Charlotte.....	\$2,119,991
Citrus.....	\$2,043,527
Clay	\$469,160
Collier	\$9,916,885
Columbia.....	\$309,304
Miami-Dade	\$80,670,340
DeSoto.....	\$607,940
Dixie.....	\$68,593
Escambia	\$3,794,637
Flagler	\$1,011,438
Franklin.....	\$75,140
Gadsden.....	\$403,300
Glades	\$78,420
Gulf.....	\$79,014
Hamilton	\$72,932
Hardee	\$182,126
Hendry.....	\$292,808

Hernando.....	\$573,537
Hillsborough.....	\$27,598,434
Indian River.....	\$997,510
Jackson.....	\$234,709
Jefferson.....	\$82,209
Lafayette.....	\$72,535
Lake.....	\$4,707,746
Lee.....	\$9,847,178
Leon.....	\$6,322,703
Liberty.....	\$84,267
Madison.....	\$72,353
Manatee.....	\$9,465,433
Marion.....	\$3,924,889
Martin.....	\$1,120,506
Monroe.....	\$609,617
Nassau.....	\$605,068
Okaloosa.....	\$2,223,670
Orange.....	\$31,942,536
Osceola.....	\$6,663,695
Palm Beach.....	\$17,692,976
Pasco.....	\$3,080,624
Pinellas.....	\$27,589,198
Polk.....	\$7,514,426
Saint Johns.....	\$4,150,060
Santa Rosa.....	\$2,179,007
Sarasota.....	\$8,117,838
Sumter.....	\$184,581
Suwannee.....	\$809,215
Taylor.....	\$1,107,328
Union.....	\$77,890
Wakulla.....	\$89,546
Walton.....	\$1,063,300
Washington.....	\$2,382,254

Section 1004.02(25), F.S. – “Workforce education” means adult general education or career education and may consist of a continuing workforce education course or a program of study leading to an occupational completion point, a career certificate, an applied technology diploma or a career degree.

Workforce Development has a total appropriation of \$370,347,980 that is funded with \$81,353,010 from the EETF and \$288,994,970 from General Revenue.

FLORIDA COLLEGES

FIXED CAPITAL OUTLAY DEBT SERVICE

EETF: Chapter 2019-115, L.O.F., Specific Appropriation 3: \$6,651,295

Funds in Specific Appropriation 3 for educational facilities are provided for debt service requirements associated with bond proceeds from the Lottery Capital Outlay and Debt Service Trust Fund included in Specific Appropriations 17 and 17A of Chapter 2012-118, L.O.F., authorized pursuant to s. 1013.737, F.S. Funds in Specific Appropriation 3 shall be transferred, using nonoperating budget authority, to the Lottery Capital Outlay and Debt Service Trust Fund. There is hereby appropriated from the Lottery Capital Outlay and Debt Service Trust Fund an amount sufficient to enable the payment of debt service resulting from these transfers.

From the funds provided in Specific Appropriation 3, \$4,595,017 shall be allocated to pay for fixed capital outlay debt service attributed to Florida colleges (\$2,054,905 is allocated to pay for fixed capital outlay debt service attributed to state universities).

FLORIDA COLLEGE LOTTERY FUNDS

EETF: Chapter 2019-115, L.O.F., Specific Appropriation 11: \$150,218,929

Funds provided in Specific Appropriation 11 shall be allocated as follows:

Eastern Florida State College.....	\$5,848,489
Broward College	\$11,567,298
College of Central Florida	\$3,212,400
Chipola College	\$1,992,434
Daytona State College.....	\$7,230,079
Florida SouthWestern State College.....	\$4,326,417
Florida State College at Jacksonville.....	\$10,713,941
Florida Keys Community College	\$863,241
Gulf Coast State College.....	\$2,925,404
Hillsborough Community College.....	\$7,099,525
Indian River State College	\$6,295,775
Florida Gateway College	\$1,862,212
Lake-Sumter State College	\$1,753,669
State College of Florida, Manatee-Sarasota.....	\$2,936,965
Miami-Dade College.....	\$24,106,424
North Florida Community College	\$961,038
Northwest Florida State College.....	\$2,654,967
Palm Beach State College.....	\$7,443,097
Pasco-Hernando Community College.....	\$3,413,192
Pensacola State College	\$4,686,728
Polk State College.....	\$3,409,431
Saint Johns River State College	\$2,305,507
Saint Petersburg College.....	\$9,443,975
Santa Fe College	\$4,239,042
Seminole State College of Florida	\$4,722,992
South Florida State College	\$2,181,088
Tallahassee Community College	\$4,320,585
Valencia College.....	\$7,703,014

The Florida College System Program Fund has a total appropriation of \$1,210,224,583 that is funded with \$150,218,929 from the EETF and \$1,059,366,154 from General Revenue.

STATE UNIVERSITIES

FIXED CAPITAL OUTLAY DEBT SERVICE

EETF: Chapter 2019-115, L.O.F., Specific Appropriation 3: \$6,651,295

Funds in Specific Appropriation 3 for educational facilities are provided for debt service requirements associated with bond proceeds from the Lottery Capital Outlay and Debt Service Trust Fund included in Specific Appropriations 17 and 17A of chapter 2012-118, L.O.F., authorized pursuant to s. 1013.737, F.S. Funds in Specific Appropriation 3 shall be transferred, using nonoperating budget authority, to the Lottery Capital Outlay and Debt Service Trust Fund. There is hereby appropriated from the Lottery Capital Outlay and Debt Service Trust Fund an amount sufficient to enable the payment of debt service resulting from these transfers.

From the funds provided in Specific Appropriation 3, \$2,055,330 shall be allocated to pay for fixed capital outlay debt service for state universities (\$4,595,965 is allocated to pay for fixed capital outlay debt service for Florida colleges).

STATE UNIVERSITY SYSTEM

EETF: Chapter 2019-115, L.O.F., Specific Appropriation 12: \$342,732,781, Specific Appropriation 13: \$17,079,571, Specific Appropriation 14: \$12,740,542, Specific Appropriation 15: \$7,898,617, Specific Appropriation 16: \$824,574

Funds in chapter 2019-115, L.O.F., Specific Appropriations 12 through 16 shall be expended in accordance with operating budgets that must be approved by each university's board of trustees.

The following Educational and General Activities allocations reflect chapter 2019-115, L.O.F., Specific Appropriation 12:

University of Florida.....	\$63,020,006
Florida State University	\$52,653,153
Florida A&M University.....	\$19,881,878
University of South Florida	\$46,976,754
University of South Florida, St. Petersburg.....	\$2,074,459
University of South Florida, Sarasota/Manatee	\$1,765,091
Florida Atlantic University	\$27,939,279
University of West Florida.....	\$10,542,913
University of Central Florida.....	\$48,209,374

Florida International University.....	\$41,214,709
University of North Florida	\$17,167,641
Florida Gulf Coast University.....	\$9,539,051
New College of Florida.....	\$1,385,113
Florida Polytechnic University	\$363,360

In addition, the EETF supports the following university programs:

Institute of Food and Agricultural Science – Chapter 2019-115, L.O.F., Specific Appropriation 13: \$17,079,571

University of South Florida Medical Center – Chapter 2019-115, L.O.F., Specific Appropriation 14: \$12,740,542

University of Florida Health Center – Chapter 2019-115, L.O.F., Specific Appropriation 15: \$7,898,617

Florida State University Medical School – Chapter 2019-115, L.O.F., Specific Appropriation 16: \$824,574

Educational and General Activities has a total appropriation of \$4,411,156,395. Of this total, \$342,732,781 is from the EETF, \$2,265,995,550 is from General Revenue, \$1,797,281,051 is from the Education/General Student & Other Fees Trust Fund and \$5,147,013 is from the Phosphate Research Trust Fund.

The Institute of Food and Agricultural Science has a total appropriation of \$165,538,366 that is funded partially by \$17,079,571 from the EETF and partially by \$148,458,795 from General Revenue.

The University of South Florida Medical Center has a total appropriation of \$144,201,402. Of this total, \$12,740,542 is from the Educational Enhancement Trust Fund, \$64,697,620 is from the Education/General Student & Other Fees Trust Fund and \$66,763,240 is from General Revenue.

The University of Florida Health Center has a total appropriation of \$152,679,352. Of this total, \$7,898,617 is from the EETF, \$38,463,434 is from the Education/General Student & Other Fees Trust Fund and \$106,317,301 is from General Revenue.

The Florida State University Medical School has a total appropriation of \$48,734,629. Of this total, \$824,574 is from the EETF, \$13,019,086 is from the Education/General Student & Other Fees Trust Fund and \$34,890,969 is from General Revenue.

Note: The detail above includes University System life and health insurance adjustments from Administered Funds.

STUDENT FINANCIAL AID

FLORIDA’S BRIGHT FUTURES SCHOLARSHIP PROGRAM

EETF: Chapter 2019-115, Specific Appropriation 4: \$595,143,167

The Florida Bright Futures Scholarship Program serves students graduating from Florida high schools, home education students, General Education Development students and certain out-of-state students who merit recognition of high academic achievement and enroll in an eligible Florida public or private postsecondary education institution within three years of graduation from high school.

The Bright Futures Scholarship Program consists of four types of awards: the Florida Academic Scholars award, the Florida Medallion Scholars award, the Florida Gold Seal Vocational Scholarship award and the Florida Gold Seal Cape Scholarship. Section 1009.53, F.S., describes the provisions of the scholarship program. There were 101,529 students who received funding for a Bright Futures Scholarship in 2018-19.

In 2019-20, Florida Academic Scholars shall receive an award equal to 100 percent of tuition and applicable fees, and an additional \$300 each fall and spring semester for textbooks and college-related expenses, for up to five years for a maximum of 120 semester hours (or equivalent) toward the completion of a certificate or a first baccalaureate degree.

Medallion Scholars shall receive an award equal to the amount necessary to pay 75 percent of tuition and applicable fees, for up to five years for a maximum of 120 semester hours (or equivalent) toward the completion of a certificate or a first baccalaureate degree.

For Florida Gold Seal Vocational Scholars and Florida Career and Professional Education (CAPE) Vocational Scholars, the award per credit hour or credit hour equivalent for the 2019-20 academic year shall be as follows:

Gold Seal Vocational Scholars and CAPE Vocational Scholars

Career Certificate Program	\$39
Applied Technology Diploma Program.....	\$39
Technical Degree Education Program	\$48

Gold Seal CAPE Vocational Scholars

Bachelor of Science Program with Statewide Articulation Agreement	\$48
Florida College System Bachelor of Applied Science Program.....	\$48

The additional stipend for Top Scholars shall be \$44 per credit hour. A Top scholar is a disbursed Florida Academic Scholar in each district who is awarded an additional per credit hour award for fall and spring. Academic Scholars who attend in the fall following

high school graduation are ranked based on the product of their Bright Futures weighted GPA and their best college entrance exam score.

STUDENT FINANCIAL AID

EETF: Chapter 2019-115, L.O.F., Specific Appropriation 5: \$64,513,215

The funds in Specific Appropriation 5 are for the Florida Student Assistance Grant (FSAG) public full-time and part-time student grant programs.

The funds in Specific Appropriation 5 are allocated with funds in Specific Appropriation 75 pursuant to the following guidelines:

FSAG – Public Full- and Part-Time	\$233,835,738
FSAG – Private	\$24,245,642
FSAG – Postsecondary	\$8,081,880
FSAG – Career Education	\$3,232,752
Children/Spouses of Deceased/Disabled Veterans	\$7,675,534
Florida Work Experience	\$1,569,922
Rosewood Family Scholarships	\$256,747
Florida Farmworker Scholarships	\$500,000
Total	\$279,398,215

From the funds provided in Specific Appropriations 5 and 75, the maximum grant to any student from the Florida Public, Private, Career Education and Postsecondary Assistance Grant Programs shall be \$2,610.

Institutions that received state funds in fiscal year 2018-19 for student scholarships or grants administered by the Office of Student Financial Assistance shall report the following two reports in a format prescribed by the Florida Department of Education, both due by December 1, 2019: (1) federal loan information, including the total federal loan amounts disbursed and the total number of students who received federal loans; and (2) student-level data for all grants, scholarships, and awards to students who apply for and/or receive state-funded tuition assistance and aid.

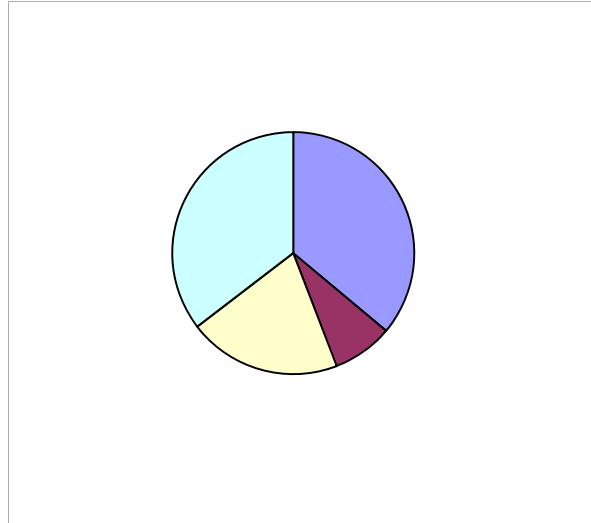
Student Financial Aid has a total appropriation of \$280,498,215. Of this total, \$64,513,215 is from the EETF, \$100,000 is from the Federal Grants Trust Fund and \$215,885,000 is from General Revenue.

**EDUCATIONAL ENHANCEMENT (LOTTERY) TRUST FUND
AND TOTAL OPERATING FUNDS FOR EDUCATION
2019-20 Legislative Session**

Funds from this year's lottery account for 3.1 percent of Florida's total public school education operating budget and 6.4 percent of the combined total operating budgets of the Public Schools, the Florida College System and the State Universities. This analysis includes funds from the General Appropriations Act as passed by the Florida Legislature, but excludes fixed capital outlay funds.

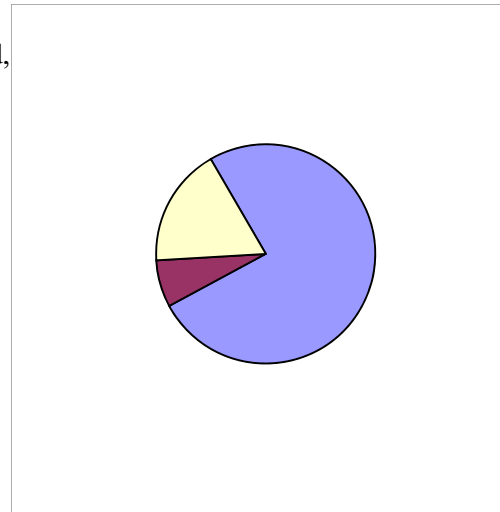
2019-20 Educational Enhancement Trust Fund Appropriations for Operations (millions)

\$673.1	Public Schools
150.2	Florida College System
381.3	State Universities
<u>659.7</u>	Student Financial Aid/Other
<u><u>\$1,864.2</u></u>	Total



2019-20 Operating Funds and Student Tuition for Educational Delivery Systems (millions)

\$21,862.3	Public Schools (General Revenue, State School Fund, Lottery and Local)
2,017.4	Florida College System (General Revenue, Lottery and Fees)
<u>5,098.8</u>	State Universities ⁽¹⁾ (General Revenue, Lottery and Fees)
<u><u>\$28,978.5</u></u>	Total



Based on an average daily operating cost of \$115.1 million, the \$673.1 million in lottery funds available to public schools would operate the public schools for approximately five days.

⁽¹⁾ Includes University System health and life insurance benefits funded from Administered Funds.

**2019-20 Educational Enhancement (Lottery) Trust Fund
Allocations for Operations ¹**

County	Estimated	Class Size	Workforce	Florida	State	2018-19		Total
	School Recognition/ Discretionary K-12 ²	Reduction Operating ²				Development	Colleges	
	-1-	-2-	-3-	-4-	-5-	-6-	-7-	
1 Alachua	\$ 1,103,279	\$ 1,068,374	\$ 116,575	\$ 4,239,042	\$ 63,020,006	\$ 8,729,380	\$ 78,276,656	
2 Baker	311,034	179,166	36,187	-	-	487,598	1,013,985	
3 Bay	1,125,101	946,842	620,754	2,925,404	-	3,983,908	9,602,009	
4 Bradford	98,229	112,187	157,917	-	-	135,634	503,967	
5 Brevard	2,950,924	2,652,375	801,949	5,848,489	-	19,702,140	31,955,877	
6 Broward	13,375,025	10,105,394	16,913,328	11,567,298	-	64,652,577	116,613,622	
7 Calhoun	95,700	73,923	17,354	-	-	199,835	386,812	
8 Charlotte	728,589	568,667	465,691	-	-	2,732,579	4,495,526	
9 Citrus	478,577	518,645	448,894	-	-	2,313,632	3,759,748	
10 Clay	2,335,251	1,364,154	103,059	-	-	8,169,773	11,972,237	
11 Collier	2,995,056	1,856,800	2,178,406	-	-	8,823,707	15,853,969	
12 Columbia	246,571	351,229	67,944	1,862,212	-	817,388	3,345,344	
13 Dade	21,064,797	12,862,053	17,720,564	24,106,424	41,214,709	62,017,052	178,985,599	
14 DeSoto	217,910	173,758	133,544	-	-	185,117	710,329	
15 Dixie	57,269	76,856	15,068	-	-	67,446	216,639	
16 Duval	5,289,222	4,879,146	-	10,713,941	17,167,641	22,980,715	61,030,665	
17 Escambia	1,113,428	1,410,158	833,554	4,686,728	10,542,913	4,960,113	23,546,894	
18 Flagler	150,757	439,372	222,179	-	-	1,789,897	2,602,205	
19 Franklin	3,968	43,343	16,506	-	-	35,578	99,395	
20 Gadsden	318,146	167,835	88,591	-	-	136,307	710,879	
21 Gilchrist	206,617	97,007	-	-	-	193,115	496,739	
22 Glades	14,810	64,632	17,226	-	-	57,380	154,048	
23 Gulf	6,176	67,829	17,357	-	-	178,127	269,489	
24 Hamilton	157,321	51,616	16,021	-	-	68,177	293,135	
25 Hardee	213,739	173,011	40,007	-	-	221,364	648,121	
26 Hendry	204,610	253,312	64,320	-	-	344,513	866,755	
27 Hernando	640,947	805,998	125,987	-	-	2,775,518	4,348,450	
28 Highlands	175,862	426,602	-	2,181,088	-	1,202,775	3,986,327	
29 Hillsborough	9,939,865	8,077,623	6,062,449	7,099,525	46,976,754	46,097,849	124,254,065	
30 Holmes	10,385	101,859	-	-	-	240,166	352,410	
31 Indian River	1,052,903	632,729	219,119	-	-	3,354,571	5,259,322	
32 Jackson	316,496	214,968	51,558	1,992,434	-	570,536	3,145,992	
33 Jefferson	56,284	26,536	18,059	-	-	178,968	279,847	
34 Lafayette	120,570	39,882	15,933	-	-	104,705	281,090	
35 Lake	1,531,894	1,590,474	1,034,156	1,753,669	-	5,882,581	11,792,774	
36 Lee	3,842,638	3,479,780	2,163,094	4,326,417	9,539,051	16,217,820	39,568,800	
37 Leon	1,661,938	1,311,488	1,388,885	4,320,585	72,535,031	9,556,651	90,774,578	
38 Levy	39,609	187,817	-	-	-	305,777	533,203	
39 Liberty	88,415	41,929	18,511	-	-	82,206	231,061	
40 Madison	195,811	85,687	15,893	961,038	-	113,765	1,372,194	
41 Manatee	2,341,748	1,778,641	2,079,238	2,936,965	-	7,514,050	16,650,642	
42 Marion	816,155	1,460,612	862,166	3,212,400	-	6,466,448	12,817,781	
43 Martin	791,157	699,531	246,137	-	-	5,725,821	7,462,646	
44 Monroe	465,138	321,567	133,912	863,241	-	1,786,510	3,570,368	
45 Nassau	833,628	444,544	132,913	-	-	1,915,944	3,327,029	
46 Okaloosa	2,024,501	1,153,355	488,466	2,654,967	-	6,169,499	12,490,788	
47 Okeechobee	93,448	223,002	-	-	-	336,766	653,216	
48 Orange	10,114,947	8,043,840	7,016,702	7,703,014	48,209,374	40,551,399	121,639,276	
49 Osceola	1,589,531	2,495,762	1,463,790	-	-	5,909,245	11,458,328	
50 Palm Beach	12,439,793	7,390,886	3,886,552	7,443,097	27,939,279	49,082,153	108,181,760	
51 Pasco	3,249,804	2,745,938	676,710	3,413,192	-	12,523,482	22,609,126	
52 Pinellas	4,582,769	3,651,949	6,060,420	9,443,975	2,074,459	23,309,228	49,122,800	
53 Polk	4,593,528	3,760,913	1,650,667	3,409,431	363,360	10,150,964	23,928,863	
54 Putnam	588,193	374,103	-	2,305,507	-	622,798	3,890,601	
55 St. Johns	3,380,396	1,564,457	911,629	-	-	14,129,089	19,985,571	
56 St. Lucie	1,896,892	1,525,446	-	6,295,775	-	4,237,183	13,955,296	
57 Santa Rosa	978,101	1,021,171	478,655	-	-	5,471,954	7,949,881	
58 Sarasota	2,807,089	1,607,846	1,783,216	-	3,150,204	12,267,168	21,615,523	
59 Seminole	2,786,170	2,411,409	-	4,722,992	-	19,953,310	29,873,881	
60 Sumter	497,027	305,580	40,546	-	-	1,002,767	1,845,920	
61 Suwannee	165,995	192,865	177,757	-	-	509,860	1,046,477	
62 Taylor	63,061	87,332	243,243	-	-	181,910	575,546	
63 Union	7,496	81,070	17,110	-	-	172,357	278,033	
64 Volusia	1,776,280	2,212,474	-	7,230,079	-	9,287,969	20,506,802	
65 Wakulla	447,535	174,907	19,670	-	-	610,496	1,252,608	
66 Walton	505,893	348,977	233,571	-	-	985,061	2,073,502	
67 Washington	90,516	117,123	523,301	-	-	170,474	901,414	
TOTAL	\$ 134,462,514	\$ 103,776,356	\$ 81,353,010	\$ 150,218,929	\$ 342,732,781	\$ 541,710,842	\$ 1,354,254,432	

1. Additional Lottery-funded programs information not available by district. Excludes fixed capital outlay appropriations.
2. Categories exclude allocations for the Florida Virtual School.
3. The Bright Futures Scholarship Program county allocations in this table do not include the funds for the Florida School for the Deaf and the Blind, Adult High School or non-Florida schools cited on page 38. The SUS Lab School funds are included for the county in which the school

2019-20 FEFP - SECOND CALCULATION

District	District	Estimated	Total
	Discretionary	School	District
	Lottery ¹	Recognition	Lottery
	-1-	-2-	-3-
		Program	Allocation
1 Alachua	\$ 97,743	\$ 890,459	\$ 988,202
2 Baker	16,347	294,687	311,034
3 Bay	88,124	1,036,977	1,125,101
4 Bradford	10,162	88,067	98,229
5 Brevard	249,437	2,701,487	2,950,924
6 Broward	939,800	12,365,000	13,304,800
7 Calhoun	6,912	88,788	95,700
8 Charlotte	53,331	675,258	728,589
9 Citrus	48,640	429,937	478,577
10 Clay	130,911	2,204,340	2,335,251
11 Collier	175,185	2,819,871	2,995,056
12 Columbia	31,884	214,687	246,571
13 Miami-Dade	1,209,168	19,855,629	21,064,797
14 De Soto	15,796	202,114	217,910
15 Dixie	6,980	50,289	57,269
16 Duval	450,073	4,839,149	5,289,222
17 Escambia	132,336	981,092	1,113,428
18 Flagler	41,537	109,220	150,757
19 Franklin	3,968	-	3,968
20 Gadsden	15,428	302,718	318,146
21 Gilchrist	8,914	197,703	206,617
22 Glades	5,758	9,052	14,810
23 Gulf	6,176	-	6,176
24 Hamilton	4,921	152,400	157,321
25 Hardee	16,012	197,727	213,739
26 Hendry	23,610	181,000	204,610
27 Hernando	75,884	565,063	640,947
28 Highlands	39,356	136,506	175,862
29 Hillsborough	755,137	9,184,728	9,939,865
30 Holmes	9,650	735	10,385
31 Indian River	59,222	993,681	1,052,903
32 Jackson	19,995	296,501	316,496
33 Jefferson	2,402	53,882	56,284
34 Lafayette	3,741	116,829	120,570
35 Lake	148,471	1,383,423	1,531,894
36 Lee	327,065	3,515,573	3,842,638
37 Leon	114,343	1,370,588	1,484,931
38 Levy	17,619	21,990	39,609
39 Liberty	4,270	84,145	88,415
40 Madison	7,891	187,920	195,811
41 Manatee	165,582	2,176,166	2,341,748
42 Marion	137,539	678,616	816,155
43 Martin	65,828	725,329	791,157
44 Monroe	29,589	435,549	465,138
45 Nassau	41,705	791,923	833,628
46 Okaloosa	108,693	1,915,808	2,024,501
47 Okeechobee	21,135	72,313	93,448
48 Orange	753,265	9,361,682	10,114,947
49 Osceola	236,712	1,352,819	1,589,531
50 Palm Beach	701,865	11,620,628	12,322,493
51 Pasco	258,008	2,991,796	3,249,804
52 Pinellas	342,315	4,240,454	4,582,769
53 Polk	348,209	4,245,319	4,593,528
54 Putnam	34,348	553,845	588,193
55 St. Johns	150,645	3,229,751	3,380,396
56 St. Lucie	138,443	1,613,422	1,751,865
57 Santa Rosa	95,419	882,682	978,101
58 Sarasota	153,075	2,654,014	2,807,089
59 Seminole	230,451	2,555,719	2,786,170
60 Sumter	28,091	468,936	497,027
61 Suwannee	18,045	147,950	165,995
62 Taylor	8,177	54,884	63,061
63 Union	7,496	-	7,496
64 Volusia	206,419	1,569,861	1,776,280
65 Wakulla	16,164	431,371	447,535
66 Walton	32,472	473,421	505,893
67 Washington	11,300	79,216	90,516
68 Washington Special	-	-	-
69 FAMU Lab School	2,089	-	2,089
70 FAU Lab School	3,865	113,435	117,300
71 FAU Lab St. Lucie	4,730	140,297	145,027
72 FSU Lab Broward	2,476	67,749	70,225
73 FSU Lab Leon	5,743	169,175	174,918
74 UF Lab School	3,717	111,360	115,077
75 Virtual School	120,363	-	120,363
Total	\$ 9,858,172	\$ 124,724,705	\$ 134,582,877

¹ Once the amount necessary to fund School Recognition Program is determined, the balance is used for Discretionary Lottery for school advisory council school improvement plans. This usually occurs after school grades are released.

EDUCATIONAL ENHANCEMENT (LOTTERY) TRUST FUND¹
Bright Futures Scholarship Program
Student Disbursements by County and Year (Public and Private High Schools)

County	1997-98	1998-99	1999-00	2000-01	2001-02	2002-03	2003-04	2004-05	2005-06
	-1-	-2-	-3-	-4-	-5-	-6-	-7-	-8-	-9-
1 Alachua	\$ 1,347,089	\$ 1,735,957	\$ 2,419,660	\$ 3,017,815	\$ 3,140,297	\$ 3,437,864	\$ 3,998,520	\$ 4,342,048	\$ 4,947,962
2 Baker	83,026	112,042	177,874	202,328	222,784	245,992	234,237	255,448	298,831
3 Bay	735,966	964,113	1,391,772	1,679,662	1,859,334	2,000,760	2,269,869	2,535,202	2,842,359
4 Bradford	85,605	104,397	148,873	189,545	189,389	201,317	237,361	241,044	269,644
5 Brevard	2,779,957	3,875,196	5,326,066	6,536,924	7,215,950	8,177,362	9,834,330	11,355,967	12,768,044
6 Broward	7,219,156	9,856,386	14,370,834	18,396,544	19,416,298	22,766,345	26,513,300	31,126,254	35,737,963
7 Calhoun	88,230	98,585	107,547	132,206	148,986	163,880	197,344	197,616	237,771
8 Charlotte	663,433	853,579	1,174,276	1,480,365	1,525,018	1,723,884	1,888,654	2,090,769	2,420,901
9 Citrus	552,051	703,449	947,878	1,064,724	1,078,390	1,248,233	1,371,816	1,664,560	1,767,914
10 Clay	933,191	1,268,570	1,660,511	2,056,382	2,121,718	2,482,637	2,833,265	3,393,281	3,878,797
11 Collier	785,516	1,125,212	1,592,476	2,189,114	2,320,174	2,782,066	3,526,927	4,099,754	4,636,226
12 Columbia	225,907	299,878	374,477	451,911	459,868	516,513	622,156	692,303	754,908
13 Miami-Dade	5,959,260	8,788,434	13,176,073	17,325,935	18,512,256	21,623,555	25,324,415	29,180,784	32,961,812
14 De Soto	67,607	96,661	138,592	166,199	168,678	214,340	271,688	294,700	281,670
15 Dixie	28,912	35,625	54,622	70,372	73,893	79,567	112,507	132,439	126,216
16 Duval	3,221,474	4,366,782	5,998,727	7,494,197	7,973,862	9,275,408	10,660,463	12,076,124	13,729,206
17 Escambia	1,304,987	1,774,099	2,504,545	3,173,431	3,233,005	3,721,807	4,078,647	4,366,174	4,843,885
18 Flagler	251,606	319,408	426,454	463,982	488,945	548,740	637,328	797,543	1,004,872
19 Franklin	30,333	44,259	56,320	74,697	55,871	42,589	52,835	55,815	41,616
20 Gadsden	55,546	93,355	150,156	184,349	172,150	194,973	195,499	232,340	256,133
21 Gilchrist	79,331	107,196	139,386	154,755	154,365	164,404	169,611	194,705	236,476
22 Glades	9,154	14,924	26,442	31,060	34,958	47,758	40,102	47,366	47,481
23 Gulf	90,517	109,234	121,334	144,629	138,688	145,624	183,266	178,522	218,155
24 Hamilton	37,114	46,193	55,909	62,794	61,463	69,197	70,261	54,999	68,459
25 Hardee	110,892	161,793	257,459	290,457	233,751	243,038	239,384	267,161	307,402
26 Hendry	100,878	146,344	201,738	257,912	265,175	313,171	367,073	376,990	387,738
27 Hernando	531,603	673,396	966,957	1,142,994	1,194,987	1,357,534	1,513,073	1,733,010	1,937,206
28 Highlands	368,383	475,355	612,811	717,311	725,586	713,200	821,164	849,256	935,810
29 Hillsborough	6,129,055	7,766,340	10,384,330	12,647,526	13,314,874	15,190,627	17,978,984	20,331,933	23,246,552
30 Holmes	89,894	107,192	168,056	198,126	203,065	236,503	241,760	254,834	290,892
31 Indian River	345,522	533,284	769,577	1,046,731	1,130,015	1,342,848	1,578,816	1,771,528	1,991,514
32 Jackson	262,524	353,206	490,896	530,223	556,091	574,338	625,487	598,433	649,783
33 Jefferson	49,557	64,080	80,721	75,876	70,167	94,421	126,200	137,517	145,983
34 Lafayette	38,596	43,269	71,739	84,978	82,873	87,617	77,107	106,031	95,286
35 Lake	804,446	1,058,982	1,433,424	1,758,517	1,861,212	2,180,652	2,477,463	2,867,073	3,417,172
36 Lee	1,714,637	2,316,253	3,148,164	3,847,387	4,206,608	4,832,175	5,608,606	6,495,119	7,152,369
37 Leon	1,596,248	2,082,724	2,833,010	3,308,893	3,446,277	3,958,162	4,603,191	5,189,296	6,038,938
38 Levy	107,512	156,830	225,953	277,816	263,006	297,431	292,026	311,338	374,852
39 Liberty	39,964	60,244	81,951	81,796	88,679	96,996	100,387	101,911	107,921
40 Madison	91,670	95,220	94,263	122,014	127,283	161,669	184,324	188,674	224,306
41 Manatee	840,715	1,129,824	1,492,479	1,907,273	2,127,876	2,484,661	3,072,414	3,615,795	4,212,638
42 Marion	909,632	1,285,061	1,798,317	2,119,382	2,330,298	2,681,114	2,956,814	3,226,009	3,769,000
43 Martin	666,967	786,018	1,078,199	1,304,855	1,472,391	1,704,099	1,995,036	2,395,168	2,841,926
44 Monroe	246,471	383,512	508,968	692,190	741,683	816,075	987,636	1,076,826	1,252,616
45 Nassau	170,862	276,164	417,944	571,774	642,834	703,050	829,324	914,552	1,000,508
46 Okaloosa	1,105,970	1,445,773	2,033,593	2,501,481	2,694,625	2,978,131	3,443,235	3,948,626	4,430,307
47 Okeechobee	136,986	183,466	258,909	302,180	302,772	310,012	316,314	330,864	346,879
48 Orange	4,007,195	5,383,341	7,671,018	9,698,598	10,157,960	11,967,944	14,264,211	16,614,047	19,407,600
49 Osceola	657,683	832,585	1,114,657	1,412,480	1,462,770	1,836,985	2,171,093	2,501,497	3,030,866
50 Palm Beach	4,275,352	5,942,950	8,432,783	10,832,495	11,628,655	13,568,443	15,917,086	18,428,779	21,342,611
51 Pasco	1,265,038	1,716,643	2,285,391	2,867,421	3,005,416	3,450,316	4,036,149	4,755,603	5,497,858
52 Pinellas	4,503,949	6,053,019	8,246,436	9,978,537	10,602,574	12,309,780	14,583,215	16,429,637	18,118,367
53 Polk	1,963,147	2,728,711	3,724,955	4,701,820	4,826,137	5,425,956	5,923,749	6,492,270	7,346,711
54 Putnam	278,909	331,668	491,661	574,874	569,145	664,573	730,335	758,502	803,291
55 St. Johns	618,642	865,904	1,318,295	1,738,017	1,899,477	2,224,859	2,768,827	3,372,281	3,983,655
56 St. Lucie	617,020	782,926	1,183,834	1,473,388	1,565,980	1,781,046	2,107,149	2,388,632	2,685,804
57 Santa Rosa	693,506	909,172	1,413,981	1,815,185	1,951,117	2,358,213	2,754,529	3,264,506	3,794,724
58 Sarasota	1,363,195	1,807,373	2,543,901	3,176,906	3,508,841	4,168,601	4,978,546	5,564,609	6,479,534
59 Seminole	2,904,358	3,961,843	5,562,608	6,727,620	7,156,169	8,224,737	9,327,748	10,416,046	11,657,694
60 Sumter	102,817	145,828	170,155	220,236	213,928	218,861	245,740	316,810	368,982
61 Suwannee	172,182	241,211	297,189	362,197	346,628	406,776	418,545	446,313	504,494
62 Taylor	90,660	131,272	180,792	209,597	214,609	275,269	270,763	280,286	283,475
63 Union	57,070	66,813	96,729	117,105	109,714	114,413	134,381	148,682	159,546
64 Volusia	2,009,117	2,743,510	3,852,943	4,719,168	4,934,758	5,743,921	6,302,791	7,199,009	8,034,102
65 Wakulla	112,626	140,497	217,339	221,036	221,822	270,686	290,723	352,704	389,237
66 Walton	85,951	113,992	176,846	236,887	230,508	280,029	272,163	313,222	413,294
67 Washington	106,864	123,626	197,289	223,626	243,265	252,025	229,760	233,962	272,777
68 School for Deaf & Blind	-	2,196	12,080	12,679	14,813	14,430	11,122	6,717	5,138
71 Florida Virtual School	-	-	-	-	-	-	-	-	-
72 FAU Lab School	-	-	-	-	-	-	-	-	6,042
73 FSU Lab School	103,985	136,125	164,723	198,903	182,443	206,531	196,977	188,801	245,359
74 FAMU Lab School	11,484	31,044	41,486	55,455	48,818	54,736	40,922	32,912	35,642
75 UF Lab School	97,131	117,032	152,120	206,940	201,667	213,001	248,518	270,005	275,081
77 Comm. Coll Adult HS	-	8,078	-	-	120,825	162,687	208,074	207,941	210,190
99 Non Florida Schools	71,720	211,331	349,772	532,675	648,406	777,648	995,420	1,227,577	1,448,248

Total \$69,263,553 \$93,906,554 \$131,849,245 \$164,845,459 \$174,914,916 * \$202,204,806 * \$ 235,188,754 * \$ 268,896,952 ** \$ 306,335,218 *

1. 2018-19 Bright Futures Scholarship Program data represents the latest available data at time of publication

NOTE: The sum of district totals may not equal total due to rounding.

*Totals correspond to end of year reports.

**State total disbursement differs slightly from Office of Student Financial Aid end of year totals due to the timing of the two reports. Furthermore, district sum is \$2,501 less than total because one funded student had no district designation.

EDUCATIONAL ENHANCEMENT (LOTTERY) TRUST FUND
Bright Futures Scholarship Program
Student Disbursements by County and Year (Public and Private High Schools) (Continued)

County	2006-07	2007-08	2008-09	2009-10	2010-11	2011-12	2012-13	2013-14	2014-15
	-10-	-11-	-12-	-13-	-14-	-15-	-16-	-17-	-18-
1 Alachua	\$ 5,624,924	\$ 5,790,431	\$ 6,478,051	\$ 6,115,589	\$ 5,944,215	\$ 4,706,165	\$ 4,349,142	\$ 4,295,944	\$ 3,880,182
2 Baker	377,337	423,231	429,433	433,875	423,259	290,704	256,518	287,046	254,083
3 Bay	3,397,167	3,589,413	4,022,148	3,981,677	3,824,471	2,835,647	2,640,186	2,526,337	2,020,376
4 Bradford	321,133	305,518	303,306	293,125	250,845	162,730	182,800	186,468	136,488
5 Brevard	14,624,066	16,181,006	18,383,253	17,880,859	17,649,957	13,759,846	12,818,484	12,255,598	10,421,703
6 Broward	39,943,021	44,078,082	49,936,037	49,983,995	50,434,381	40,051,442	38,009,686	36,775,627	30,923,627
7 Calhoun	267,193	244,662	264,976	253,066	250,118	189,730	185,243	171,311	156,635
8 Charlotte	2,633,330	2,773,040	3,099,349	2,876,561	2,935,438	2,339,085	2,192,659	2,065,476	1,761,446
9 Citrus	2,062,839	2,220,947	2,482,359	2,485,913	2,428,058	1,855,950	1,657,908	1,595,055	1,394,662
10 Clay	4,454,069	4,932,551	5,609,148	5,759,661	5,673,955	4,722,313	4,552,528	4,486,313	3,888,573
11 Collier	5,252,310	5,764,017	6,563,829	6,573,208	7,038,042	5,559,982	5,371,871	5,346,625	4,458,166
12 Columbia	842,349	854,714	965,844	893,684	925,718	699,254	638,479	569,624	440,398
13 Miami-Dade	36,671,558	40,371,227	45,860,153	46,037,445	46,093,264	36,685,319	34,524,826	33,633,653	27,778,139
14 De Soto	297,788	311,185	291,961	311,985	283,324	259,869	190,427	182,964	129,246
15 Dixie	147,828	160,015	144,324	142,278	136,993	104,828	82,636	88,399	76,451
16 Duval	15,367,760	16,460,511	17,571,389	16,939,649	16,734,300	13,577,960	12,656,632	12,382,849	10,855,318
17 Escambia	5,204,595	5,846,256	6,367,600	5,835,771	5,384,989	4,026,686	3,572,846	3,440,470	2,941,536
18 Flagler	1,242,892	1,394,192	1,651,599	1,706,341	1,733,249	1,392,144	1,278,345	1,166,438	948,531
19 Franklin	56,250	61,999	74,160	61,256	50,391	47,594	40,420	43,915	34,137
20 Gadsden	248,657	229,864	241,158	225,453	236,381	192,935	170,082	150,972	104,897
21 Gilchrist	283,603	306,111	334,873	335,344	351,256	242,622	266,145	225,178	165,331
22 Glades	37,612	43,818	41,665	59,777	58,438	42,907	43,591	41,717	25,925
23 Gulf	236,476	234,698	323,224	292,758	308,283	213,249	198,436	180,563	132,112
24 Hamilton	84,381	91,959	92,732	71,442	60,176	49,345	43,595	56,999	49,424
25 Hardee	343,997	398,975	418,352	391,054	390,693	301,253	260,624	240,781	181,901
26 Hendry	476,302	494,532	579,659	540,061	515,898	383,028	387,020	394,705	288,037
27 Hernando	2,173,336	2,398,402	2,768,102	2,946,873	2,962,498	2,466,871	2,180,041	2,036,880	1,693,963
28 Highlands	1,093,405	1,199,016	1,261,676	1,149,346	1,094,809	830,632	799,716	755,511	608,209
29 Hillsborough	26,546,222	28,839,156	32,958,301	32,418,957	31,864,699	25,386,948	23,986,350	23,689,339	20,750,636
30 Holmes	327,590	364,008	381,800	349,063	343,093	269,502	260,004	254,279	170,642
31 Indian River	2,183,299	2,444,108	2,732,731	2,666,752	2,828,751	2,179,014	2,024,015	2,027,087	1,766,753
32 Jackson	800,555	829,747	945,203	891,347	915,582	687,446	602,017	582,400	463,675
33 Jefferson	128,093	131,124	160,766	164,880	144,145	115,730	104,111	110,428	89,792
34 Lafayette	119,112	113,084	130,070	115,998	118,940	95,484	87,588	86,692	72,239
35 Lake	4,007,359	4,622,197	5,276,437	5,272,164	5,491,934	4,195,871	3,907,409	3,641,771	2,919,862
36 Lee	8,198,927	9,146,195	10,431,088	10,304,363	10,717,434	8,631,230	8,102,660	8,105,466	6,954,769
37 Leon	6,633,510	7,031,475	7,443,726	7,278,358	7,170,431	5,609,088	5,088,148	4,729,992	4,262,977
38 Levy	433,851	437,326	498,831	480,518	488,971	366,586	346,319	301,713	221,672
39 Liberty	133,701	126,971	144,263	123,180	115,636	111,867	72,813	66,495	63,198
40 Madison	238,510	230,361	228,231	257,465	269,572	177,208	127,173	106,074	82,875
41 Manatee	5,059,028	5,689,588	6,531,930	6,347,394	6,240,409	5,022,397	4,614,789	4,440,975	3,709,898
42 Marion	4,403,262	4,928,893	5,640,259	5,696,912	5,596,796	4,376,194	4,068,097	3,818,571	3,303,393
43 Martin	3,330,900	3,722,781	4,311,000	4,288,365	4,432,427	3,571,986	3,498,910	3,458,385	2,925,855
44 Monroe	1,367,980	1,399,916	1,546,462	1,447,494	1,387,790	1,043,405	985,466	1,004,392	850,394
45 Nassau	1,217,599	1,244,429	1,412,785	1,361,338	1,437,714	1,166,462	1,006,759	961,475	802,323
46 Okaloosa	5,154,579	5,655,100	6,113,677	6,113,129	5,891,448	4,359,175	3,851,410	3,694,894	3,063,681
47 Okeechobee	388,561	445,567	478,531	443,576	475,468	372,259	317,709	312,079	249,703
48 Orange	22,151,334	24,217,516	27,315,704	26,704,071	26,924,338	21,292,527	20,303,370	19,888,765	17,304,924
49 Osceola	3,634,815	4,096,948	4,839,526	4,874,529	5,070,629	4,080,343	3,765,058	3,626,805	2,912,841
50 Palm Beach	24,361,677	27,382,440	31,563,641	31,855,904	32,338,459	25,162,147	23,967,176	23,907,879	20,669,800
51 Pasco	6,489,268	7,159,251	8,306,482	8,594,051	9,102,689	7,486,127	7,234,613	7,119,456	5,993,225
52 Pinellas	19,886,303	21,081,696	23,667,207	23,250,941	22,441,069	17,683,031	16,219,049	15,397,871	12,714,953
53 Polk	8,082,682	8,680,380	9,897,373	9,978,241	9,615,592	7,830,594	6,904,512	6,531,522	5,367,465
54 Putnam	946,106	932,566	1,001,155	914,276	862,029	664,552	549,596	492,792	368,624
55 St. Johns	4,746,714	5,453,814	6,349,118	6,457,571	6,674,966	5,487,305	5,420,500	5,660,620	5,202,563
56 St. Lucie	3,075,923	3,404,633	3,894,011	4,036,550	3,985,888	3,208,631	2,968,223	2,765,774	2,239,978
57 Santa Rosa	4,425,651	4,962,217	5,728,039	5,470,971	5,325,375	4,077,242	3,679,610	3,454,633	2,753,750
58 Sarasota	7,378,805	8,068,083	9,200,282	8,646,374	8,282,729	6,414,760	5,908,529	5,954,533	5,136,296
59 Seminole	13,128,071	14,539,445	16,217,948	15,969,334	15,977,304	12,220,199	11,209,674	10,994,105	9,341,784
60 Sumter	444,677	539,394	655,243	690,927	741,825	611,478	599,140	557,387	453,997
61 Suwannee	501,897	525,874	525,361	510,033	540,777	404,665	353,061	327,984	261,550
62 Taylor	341,298	345,714	338,586	292,250	297,506	230,007	206,288	208,235	180,252
63 Union	179,175	208,422	215,904	189,867	175,103	124,410	97,943	88,127	67,896
64 Volusia	8,956,015	9,672,391	10,889,043	10,043,941	9,932,079	7,604,314	6,949,354	6,460,607	5,257,947
65 Wakulla	426,565	448,818	514,394	501,966	500,312	401,173	396,263	335,220	291,202
66 Walton	555,211	606,452	693,894	718,370	762,610	578,224	540,454	488,354	389,149
67 Washington	341,696	349,254	393,392	366,418	392,312	305,914	261,738	241,884	176,735
68 School for Deaf & Blind	8,735	10,793	11,511	13,605	17,203	9,816	13,138	10,206	8,232
71 Florida Virtual School	-	-	-	-	-	-	-	42,240	78,262
72 FAU Lab School	15,819	35,043	46,396	73,532	92,299	92,930	97,308	100,187	140,113
73 FSU Lab School	317,980	371,585	415,963	407,542	448,822	369,752	323,863	356,350	291,484
74 FAMU Lab School	28,606	29,997	22,047	36,670	45,872	38,424	36,064	31,597	29,414
75 UF Lab School	288,387	306,899	341,203	363,371	408,166	341,311	366,791	355,534	271,118
77 Comm. Coll Adult HS	256,054	258,976	327,286	335,181	292,475	219,989	179,647	133,949	95,199
99 Non Florida Schools	1,606,164	1,623,913	1,714,950	1,636,991	64,883	1,164,692	996,995	911,225	728,481

Total \$ 347,014,439 * \$ 379,874,911 * \$ 429,012,109 * \$ 423,532,775 * \$ 421,417,950 * \$ 333,832,499 * \$ 312,150,590 * \$ 303,419,763 * \$ 257,201,066 *

1. 2018-19 Bright Futures Scholarship Program data represents the latest available data at time of publication.

NOTE: The sum of district totals may not equal total due to rounding.

*Totals correspond to end of year reports.

EDUCATIONAL ENHANCEMENT (LOTTERY) TRUST FUND¹
Bright Futures Scholarship Program
Student Disbursements by County and Year (Public and Private High Schools) (Continued)

County	2015-16	2016-17	2017-18	2018-19
	-19-	-20-	-21-	-21-
1 Alachua	\$ 3,497,023	\$ 3,181,287	\$ 6,657,431	\$ 8,154,238
2 Baker	221,110	206,129	320,645	487,598
3 Bay	1,752,797	1,579,266	3,197,636	3,983,908
4 Bradford	123,676	74,858	104,952	135,634
5 Brevard	9,333,807	8,400,055	15,603,425	19,702,140
6 Broward	26,912,172	24,080,888	43,017,124	64,652,577
7 Calhoun	133,433	112,031	150,003	199,835
8 Charlotte	1,415,622	1,227,335	2,131,056	2,732,579
9 Citrus	1,169,315	1,014,825	1,680,248	2,313,632
10 Clay	3,365,045	3,088,321	5,928,990	8,169,773
11 Collier	3,871,113	3,404,662	6,231,794	8,823,707
12 Columbia	366,840	306,937	509,719	817,388
13 Miami-Dade	23,946,468	20,890,570	39,461,346	62,017,052
14 De Soto	88,045	78,397	94,835	185,117
15 Dixie	58,324	57,029	60,767	67,446
16 Duval	9,692,317	8,737,938	16,544,268	22,980,715
17 Escambia	2,550,003	2,201,729	3,825,410	4,960,113
18 Flagler	800,335	721,548	1,194,383	1,789,897
19 Franklin	28,819	22,890	24,504	35,578
20 Gadsden	74,162	54,078	85,296	136,307
21 Gilchrist	123,098	100,031	124,401	193,115
22 Glades	21,349	12,089	17,208	57,380
23 Gulf	101,670	73,305	134,269	178,127
24 Hamilton	29,585	29,918	71,202	68,177
25 Hardee	143,641	120,185	177,934	221,364
26 Hendry	224,855	167,043	219,149	344,513
27 Hernando	1,438,372	1,284,517	1,939,965	2,775,518
28 Highlands	503,805	401,023	824,477	1,202,775
29 Hillsborough	18,632,757	17,252,026	32,316,685	46,097,849
30 Holmes	152,633	121,660	164,754	240,166
31 Indian River	1,479,623	1,309,181	2,325,226	3,354,571
32 Jackson	324,608	248,228	371,067	570,536
33 Jefferson	78,797	61,818	109,006	178,968
34 Lafayette	58,804	60,354	91,831	104,705
35 Lake	2,608,710	2,315,683	3,816,124	5,882,581
36 Lee	6,534,717	6,086,685	12,743,999	16,217,820
37 Leon	3,905,275	3,495,977	6,578,711	9,053,237
38 Levy	204,350	159,954	211,037	305,777
39 Liberty	64,839	51,885	69,472	82,206
40 Madison	54,664	44,046	82,054	113,765
41 Manatee	3,191,998	2,908,016	5,246,526	7,514,050
42 Marion	2,997,210	2,629,988	5,278,252	6,466,448
43 Martin	2,540,703	2,265,812	4,120,999	5,725,821
44 Monroe	730,977	602,601	1,123,701	1,786,510
45 Nassau	716,120	671,256	1,158,428	1,915,944
46 Okaloosa	2,590,323	2,452,373	4,676,993	6,169,499
47 Okeechobee	187,355	158,677	248,449	336,766
48 Orange	15,390,380	14,302,761	27,565,915	40,551,399
49 Osceola	2,410,383	2,160,956	4,087,873	5,909,245
50 Palm Beach	18,949,412	17,557,687	34,830,718	47,958,977
51 Pasco	5,324,809	4,723,233	8,436,846	12,523,482
52 Pinellas	10,804,668	9,516,246	17,272,514	23,309,228
53 Polk	4,544,770	3,940,626	6,730,035	10,150,964
54 Putnam	264,731	211,188	409,794	622,798
55 St. Johns	4,934,578	4,801,506	9,915,341	14,129,089
56 St. Lucie	1,905,878	1,520,224	2,776,072	4,237,183
57 Santa Rosa	2,377,113	2,122,203	3,994,804	5,471,954
58 Sarasota	4,642,730	4,279,368	8,941,597	12,267,168
59 Seminole	8,242,654	7,515,604	14,148,878	19,953,310
60 Sumter	376,283	353,257	638,884	1,002,767
61 Suwannee	252,209	220,578	361,189	509,860
62 Taylor	122,458	115,250	158,844	181,910
63 Union	77,212	70,978	106,141	172,357
64 Volusia	4,437,995	3,928,549	7,032,184	9,287,969
65 Wakulla	239,466	234,054	422,946	610,496
66 Walton	329,499	317,133	602,200	985,061
67 Washington	138,354	113,195	135,642	170,474
68 School for Deaf & Blind	7,812	11,044	19,452	32,594
71 Florida Virtual School	109,667	165,195	359,063	596,123
72 FAU Lab School	160,049	267,166	654,042	1,123,176
73 FSU Lab School	224,861	194,416	322,335	491,940
74 FAMU Lab School	14,770	13,701	16,707	11,474
75 UF Lab School	261,586	258,722	426,726	575,142
77 Comm. Coll Adult HS	59,695	42,843	53,715	72,021
99 Non Florida Schools	641,988	624,693	1,263,648	1,995,678
Total	\$ 226,287,272	* \$ 204,107,475	* \$ 382,749,854	* \$ 544,407,258

1. 2018-19 Bright Futures Scholarship Program data represents the latest available data at time of publication.

NOTE: The sum of district totals may not equal total due to rounding.

*Totals correspond to end of year reports.

K-12 Public School Capital Outlay Construction Bonds

County	2003-04		2003-04		2006-07		2007-08	
	Classrooms	District Effort	Classrooms for Kids	Classrooms for Kids	Classrooms for Kids	Classrooms for Kids	Total	
	First*	Recognition	Allocations	Allocations	Allocations	Allocations	-1-	-6-
1 Alachua	\$ 19,216,634	\$ 419,099	\$ 3,296,557	\$ 5,259,403	\$ 5,727,637	\$ 33,919,330		
2 Baker	2,681,131	-	644,730	1,865,015	1,105,938	6,296,814		
3 Bay	15,624,882	312,908	4,107,770	6,020,288	3,380,434	29,446,282		
4 Bradford	2,404,496	-	1,096,794	436,537	524,422	4,462,249		
5 Brevard	43,146,937	-	12,813,233	6,734,089	7,059,949	69,754,208		
6 Broward	281,536,984	791,603	43,226,914	24,075,788	22,505,759	372,137,048		
7 Calhoun	1,429,060	-	354,532	251,874	245,901	2,281,367		
8 Charlotte	15,442,537	85,810	3,948,972	1,527,843	2,910,824	23,915,986		
9 Citrus	9,195,958	-	2,447,354	4,317,471	7,455,967	23,416,750		
10 Clay	29,913,944	111,601	8,275,859	22,804,678	31,556,356	92,662,438		
11 Collier	14,059,265	-	17,156,690	23,239,385	7,854,863	62,310,203		
12 Columbia	5,863,848	-	1,616,162	3,033,362	1,158,000	11,671,372		
13 Miami-Dade	249,217,537	4,767,022	45,557,948	31,841,630	30,616,996	362,001,133		
14 De Soto	2,502,469	-	600,718	496,139	858,431	4,457,757		
15 Dixie	1,452,772	-	215,221	364,794	488,345	2,521,132		
16 Duval	84,717,252	543,468	17,752,872	13,700,263	12,265,719	128,979,574		
17 Escambia	26,393,641	418,940	3,966,914	4,163,338	4,061,135	39,003,968		
18 Flagler	9,864,160	52,088	5,138,061	16,040,488	23,858,139	54,952,936		
19 Franklin	1,450,780	-	160,380	162,000	146,700	1,919,860		
20 Gadsden	4,837,724	-	670,697	696,057	2,694,027	8,898,505		
21 Gilchrist	2,457,269	-	540,214	630,896	434,718	4,063,097		
22 Glades	2,491,160	-	114,343	468,644	121,011	3,195,158		
23 Gulf	1,760,593	30,089	415,469	266,447	1,170,198	3,642,796		
24 Hamilton	1,029,834	-	207,274	232,033	576,688	2,045,829		
25 Hardee	3,379,131	-	1,567,550	896,493	1,884,896	7,728,070		
26 Hendry	6,512,952	-	1,620,360	728,423	742,656	9,604,391		
27 Hernando	12,679,144	239,247	6,152,470	13,824,636	16,756,747	49,652,244		
28 Highlands	8,234,358	-	2,027,286	2,290,249	5,674,283	18,226,176		
29 Hillsborough	138,946,878	2,699,045	70,999,118	83,136,437	32,337,930	328,119,408		
30 Holmes	2,867,462	-	309,574	693,721	321,091	4,191,848		
31 Indian River	4,485,195	277,685	4,198,399	4,870,372	5,174,852	19,006,503		
32 Jackson	4,651,903	27,761	1,224,653	1,801,279	2,404,806	10,110,402		
33 Jefferson	1,414,820	-	253,792	192,046	180,564	2,041,222		
34 Lafayette	466,979	-	125,217	279,936	617,911	1,490,043		
35 Lake	34,625,585	676,014	15,838,151	15,876,781	31,512,781	98,529,312		
36 Lee	40,210,895	-	20,557,312	43,853,559	37,272,835	141,894,601		
37 Leon	15,434,055	1,165,027	4,271,562	7,659,840	7,885,038	36,415,522		
38 Levy	4,696,731	-	758,001	616,778	2,009,988	8,081,498		
39 Liberty	997,779	-	244,519	914,278	550,114	2,706,690		
40 Madison	1,596,483	-	262,775	275,465	253,926	2,388,649		
41 Manatee	26,398,468	1,399,092	10,035,150	19,752,915	3,886,852	61,472,477		
42 Marion	32,203,144	50,156	9,196,293	14,133,028	15,850,264	71,432,885		
43 Martin	15,970,399	-	7,314,379	4,170,429	5,956,614	33,411,821		
44 Monroe	5,338,193	141,170	978,346	1,005,106	890,164	8,352,979		
45 Nassau	14,754,331	-	1,840,495	3,850,626	5,225,718	25,671,170		
46 Okaloosa	16,652,703	-	2,762,334	3,827,966	2,769,177	26,012,180		
47 Okeechobee	4,107,241	-	916,731	1,326,935	2,019,818	8,370,725		
48 Orange	153,184,961	7,736,243	35,111,140	39,353,395	15,834,213	251,219,952		
49 Osceola	79,367,481	2,177,514	22,596,087	22,099,441	35,256,838	161,497,361		
50 Palm Beach	137,031,375	1,076,752	42,596,719	17,957,905	13,599,649	212,262,400		
51 Pasco	42,560,357	149,579	20,100,560	29,769,917	37,066,223	129,646,636		
52 Pinellas	83,646,728	1,817	17,895,617	15,045,087	10,615,544	127,204,793		
53 Polk	58,495,708	-	24,469,514	48,615,388	62,051,089	193,631,699		
54 Putnam	10,045,986	52,211	1,418,203	1,318,299	1,276,612	14,111,311		
55 St. Johns	26,134,482	162,064	12,550,747	18,997,065	26,594,997	84,439,355		
56 St. Lucie	23,378,992	325,171	10,212,030	20,471,516	54,352,358	108,740,067		
57 Santa Rosa	24,848,427	121,383	5,619,846	4,201,038	7,387,260	42,177,954		
58 Sarasota	32,097,640	430,238	9,258,101	9,527,510	9,754,856	61,068,345		
59 Seminole	43,405,640	1,221,849	12,900,922	12,544,043	5,409,345	75,481,799		
60 Sumter	5,567,448	-	878,121	682,918	537,893	7,666,380		
61 Suwannee	4,447,393	-	610,400	1,618,844	2,076,238	8,752,875		
62 Taylor	2,614,860	-	385,052	349,706	322,980	3,672,598		
63 Union	2,137,517	-	215,498	898,035	647,206	3,898,256		
64 Volusia	41,853,226	2,280,318	11,390,642	10,409,030	10,079,213	76,012,429		
65 Wakulla	4,206,055	57,036	554,566	1,490,289	3,583,126	9,891,072		
66 Walton	5,554,869	-	2,216,111	2,960,743	954,324	11,686,047		
67 Washington	2,855,876	-	859,402	1,213,392	1,422,802	6,351,472		
68 Washington Special	-	-	-	-	-	-		
69 FAMU Lab School	533,474	-	62,208	88,322	61,059	745,063		
70 FAU Lab School	707,324	-	197,152	367,113	49,938	1,321,527		
71 FSU Broward	-	-	-	-	-	-		
72 FSU Leon	931,338	-	-	-	-	931,338		
73 UF Lab School	928,221	-	121,217	113,235	109,055	1,271,728		
74 Fla Virtual School	-	-	-	-	-	-		
Total	\$ 2,011,851,074	\$ 30,000,000	\$ 570,000,000	\$ 654,697,990	\$ 650,000,000	\$ 3,916,549,064		

*A total of \$963,242 is disbursed in cash payments annually to selected districts that elected not to participate in the bond sales.

All programs in columns 1 through 5 above are funded through the issuance of bonds.

The debt service obligation on these bonds is payable through lottery funds

For fiscal years 2004-05 and 2005-06, class size reduction appropriations were granted from other revenue sources and are not included herein.

**Historical Analysis of the General Revenue Fund
Total Appropriations and Education Appropriations*
(millions)**

	Total Appropriations	Non Recurring	Recurring	Total Education Appropriations	Non Recurring	Recurring	Recurring Education Appropriations as a Percentage of Total Recurring Appropriations	Education Appropriations as a Percentage of Total Appropriations
1986-87	\$ 7,788.5	\$ 291.2	\$ 7,497.3	\$ 4,651.7	\$ 64.2	\$ 4,587.5	61.19%	59.73%
1987-88	8,629.9	83.1	8,546.8	5,111.4	2.3	5,109.1	59.78%	59.23%
1988-89	9,513.0	109.3	9,403.7	5,552.0	36.1	5,515.9	58.66%	58.36%
1989-90	9,976.4	67.5	9,908.9	5,724.5	3.1	5,721.4	57.74%	57.38%
1990-91	10,473.2	58.4	10,414.8	5,807.5	14.4	5,793.1	55.62%	55.45%
1991-92	11,061.2	22.2	11,039.0	5,804.7	1.9	5,802.8	52.57%	52.48%
1992-93	11,837.1	28.7	11,808.4	6,010.5	0.3	6,010.2	50.90%	50.78%
1993-94	13,039.5	150.1	12,889.4	6,550.0	57.6	6,492.4	50.37%	50.23%
1994-95	13,875.1	61.2	13,813.9	6,995.6	15.4	6,980.2	50.53%	50.42%
1995-96	14,797.4	401.4	14,396.0	7,503.8	122.9	7,380.9	51.27%	50.71%
1996-97	15,563.8	400.3	15,163.5	8,128.9	84.1	8,044.8	53.05%	52.23%
1997-98	17,098.1	696.8	16,401.3	9,212.4	395.4	8,817.0	53.76%	53.88%
1998-99	18,009.8	599.6	17,410.2	9,649.0	138.3	9,510.7	54.63%	53.58%
1999-00	18,447.1	709.7	17,737.4	10,236.3	368.1	9,868.2	55.63%	55.49%
2000-01	19,607.4	517.3	19,090.1	10,655.8	142.9	10,512.9	55.07%	54.35%
2001-02	19,077.3	554.7	18,522.6	10,046.8	215.9	9,830.9	53.08%	52.66%
2002-03	20,494.1	464.8	20,029.3	10,814.1	63.2	10,750.9	53.68%	52.77%
2003-04	21,179.7	70.5	21,109.2	11,223.5	1.2	11,222.3	53.16%	52.99%
2004-05	23,670.2	1,111.9	22,558.4	12,144.0	184.5	11,959.5	53.02%	51.31%
2005-06	26,472.6	1,654.1	24,818.5	13,379.8	324.8	13,055.0	52.60%	50.54%
2006-07	29,135.2	2,488.4	26,646.8	14,233.0	259.6	13,973.4	52.44%	48.85%
2007-08	28,475.4	1,900.5	26,574.9	14,503.3	552.2	13,951.1	52.50%	50.93%
2008-09	24,802.8	678.5	24,124.3	12,329.0	37.3	12,291.7	50.95%	49.71%
2009-10	21,126.2	509.1	20,617.1	11,375.2	48.2	11,327.0	54.94%	53.84%
2010-11	23,877.6	1,343.4	22,534.2	12,557.7	359.3	12,198.4	54.13%	52.59%
2011-12	23,006.5	281.3	22,725.2	12,009.8	21.3	11,988.5	52.75%	52.20%
2012-13	24,565.5	80.0	24,485.5	12,671.7	(204.3)	12,876.0	52.59%	51.58%
2013-14	26,482.6	340.2	26,142.4	14,157.1	81.1	14,076.0	53.84%	53.46%
2014-15	27,480.1	547.1	26,933.0	14,464.2	135.5	14,328.7	53.20%	52.64%
2015-16	28,869.4	616.3	28,253.1	15,113.0	97.8	15,015.2	53.15%	52.35%
2016-17	30,314.5	846.9	29,467.6	15,585.0	260.4	15,324.5	52.00%	51.41%
2017-18	31,368.5	662.7	30,705.9	16,620.1	24.0	16,596.1	54.05%	52.98%
2018-19	32,613.4	839.4	31,774.1	17,000.8	(23.1)	17,023.8	53.58%	52.13%
2019-20	33,888.1	997.6	32,890.4	17,463.8	(58.9)	17,522.7	53.28%	51.53%

The purpose of this table is to demonstrate the continuity of General Revenue appropriations for education since the inception of the Florida Lottery. The EETF supplements, but does not supplant, state funding of education through the General Revenue Fund and other revenue sources. Excludes fixed capital outlay appropriations.

* Data for this chart are available from OPB/Governor's Office or legislative staff. The Florida Department of Education does not have access to LAS/PBS data other than Education.

EDUCATIONAL ENHANCEMENT TRUST FUND

FINANCIAL OUTLOOK STATEMENT

Including Results of December 2019 Revenue Estimating Conferences and Other Adjustments as of January 10, 2020
 FY 2019-20 through FY 2024-25
 (\$ MILLIONS)

DATE: January 15, 2020

	<u>RECURRING</u>	<u>NON- RECURRING</u>	<u>TOTAL</u>
FUNDS AVAILABLE 2019-20			
Balance Forward from 2018-19	0.0	226.2	226.2
Revenues from Lottery Ticket Sales	1,824.7	0.0	1,824.7
Transfer from DOL Administrative Trust Fund	2.3	8.2	10.5
Revenues from Slot Machine Activity	203.5	0.0	203.5
Interest Earnings	10.8	0.0	10.8
Total 2019-20 Funds Available	<u>2,041.3</u>	<u>234.4</u>	<u>2,275.7</u>
EFFECTIVE APPROPRIATIONS 2019-20			
Public Schools	473.5	118.2	591.7
Workforce Education	81.4	0.0	81.4
State University System	382.7	0.0	382.7
Florida College System	150.2	0.0	150.2
Bright Futures	595.1	0.0	595.1
Student Financial Assistance	64.5	0.0	64.5
SMART Schools/Classrooms First	82.3	0.0	82.3
Class Size Reduction/Debt Service	133.4	0.0	133.4
Other Education Facilities	6.7	0.0	6.7
Total 2019-20 Effective Appropriations	<u>1,969.8</u>	<u>118.2</u>	<u>2,088.0</u>
AVAILABLE RESERVES	71.5	116.2	187.7
FUNDS AVAILABLE 2020-21			
Balance Forward from 2019-20	0.0	187.7	187.7
Revenues from Lottery Ticket Sales	1,901.1	0.0	1,901.1
Transfer from DOL Administrative Trust Fund	2.3	0.0	2.3
Revenues from Slot Machine Activity	206.0	0.0	206.0
Interest Earnings	10.4	0.0	10.4
Total 2020-21 Funds Available	<u>2,119.8</u>	<u>187.7</u>	<u>2,307.5</u>
FUNDS AVAILABLE 2021-22			
Revenues from Lottery Ticket Sales	1,926.4	0.0	1,926.4
Transfer from DOL Administrative Trust Fund	2.3	0.0	2.3
Revenues from Slot Machine Activity	208.5	0.0	208.5
Interest Earnings	12.3	0.0	12.3
Total 2021-22 Funds Available	<u>2,149.5</u>	<u>0.0</u>	<u>2,149.5</u>
FUNDS AVAILABLE 2022-23			
Revenues from Lottery Ticket Sales	1,948.5	0.0	1,948.5
Transfer from DOL Administrative Trust Fund	2.3	0.0	2.3
Revenues from Slot Machine Activity	211.1	0.0	211.1
Interest Earnings	13.1	0.0	13.1
Total 2022-23 Funds Available	<u>2,175.0</u>	<u>0.0</u>	<u>2,175.0</u>

This page left intentionally blank.

EDUCATIONAL ENHANCEMENT TRUST FUND

FINANCIAL OUTLOOK STATEMENT

Including Results of December 2019 Revenue Estimating Conferences and Other Adjustments as of January 10, 2020
FY 2019-20 through FY 2024-25
(\$ MILLIONS)

DATE: January 15, 2020

	<u>RECURRING</u>	<u>NON- RECURRING</u>	<u>TOTAL</u>
FUNDS AVAILABLE 2023-24			
Revenues from Lottery Ticket Sales	1,999.5	0.0	1,999.5
Transfer from DOL Administrative Trust Fund	2.3	0.0	2.3
Revenues from Slot Machine Activity	213.7	0.0	213.7
Interest Earnings	13.5	0.0	13.5
Total 2023-24 Funds Available	2,229.0	0.0	2,229.0
FUNDS AVAILABLE 2024-25			
Revenues from Lottery Ticket Sales	1,993.0	0.0	1,993.0
Transfer from DOL Administrative Trust Fund	2.3	0.0	2.3
Revenues from Slot Machine Activity	216.3	0.0	216.3
Interest Earnings	13.5	0.0	13.5
Total 2024-25 Funds Available	2,225.1	0.0	2,225.1