

# Business Management & Administration

The Business Management and Administration Career Cluster programs prepare students for careers in planning, organizing, directing and evaluating business functions essential to efficient and productive business operations. Career opportunities in this cluster are available in every sector of the economy and require specific skills in organization, time management, customer service and communication.

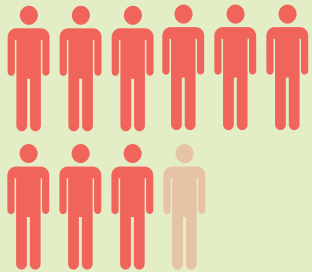
2018-19

**52,906**  
enrollments in  
High School  
programs



+

**95,070**  
enrollments in  
Middle School  
programs



= **147,976**

= 10,000

## Top High School Programs

**Administrative Office Specialist (15,754)**

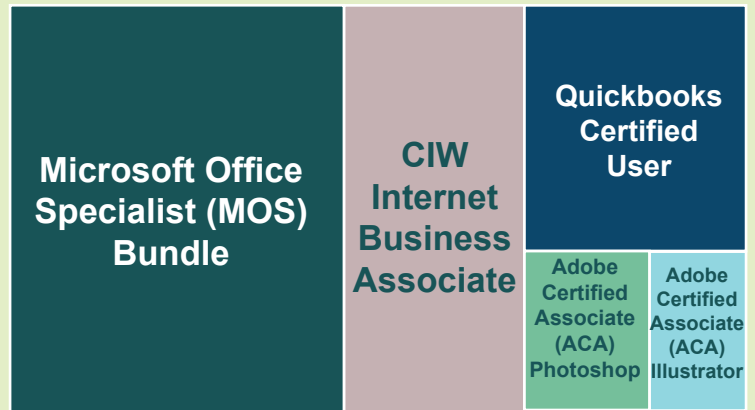
**Accounting Applications (6,567)**

**Emerging Technology in Business (5,886)**

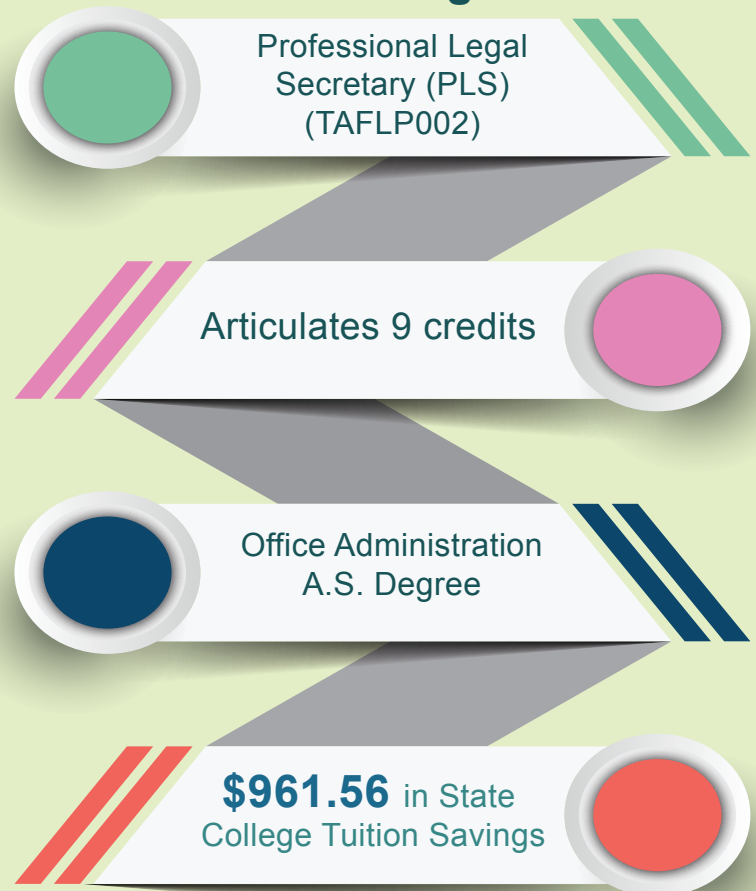
**Electronic Business Enterprise (5,511)**

**Business Management and Analysis (5,173)**

## Top Certifications Earned by K-12 Students



## Articulation Pathway to College



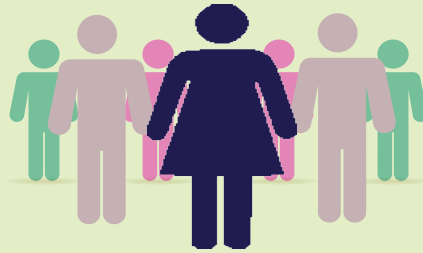


2,003

District  
Postsecondary  
Enrollments

20

Districts



### Top Postsecondary Programs



#### High Growth



Medical Secretaries

#### High Wage



Web Developers

#### Annual Openings



General and Operations  
Managers