

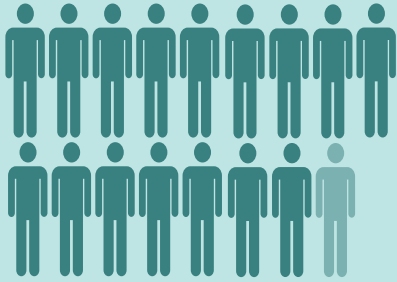


Human Services

The Human Services career cluster is divided into three pathways: counseling and mental health services; family and community services; and consumer services. Hundreds of human services programs prepare high school and postsecondary students for rewarding careers in this diverse cluster.

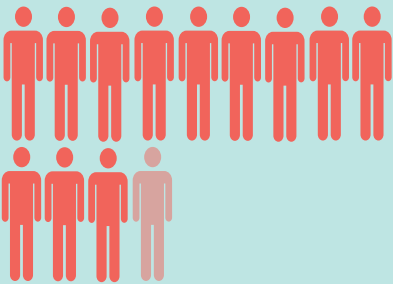
2018-19

16,920
enrollments in
High School
programs



+

12,235
enrollments in
Middle School
programs



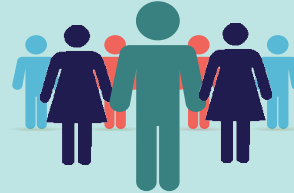
=

29,155

= 1,000

3,341

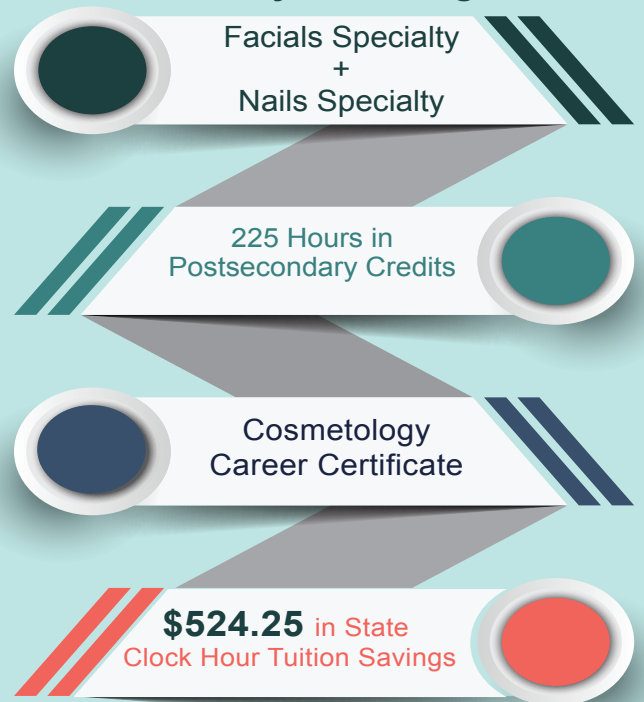
**District
Postsecondary
Enrollments**



**Top
Postsecondary
Programs**



**Sample of Local Articulation
Pathway to College**



Top High School Programs

Cosmetology (3,293)

Barbering (861)

Nails Specialty (531)

Facials Specialty (289)

**Dry Cleaning and
Laundering (136)**

*Articulation in this career cluster varies per local institution.

Notes: Based on 2018-19 data. Postsecondary enrollment is limited to district programs and includes dual enrollment students.