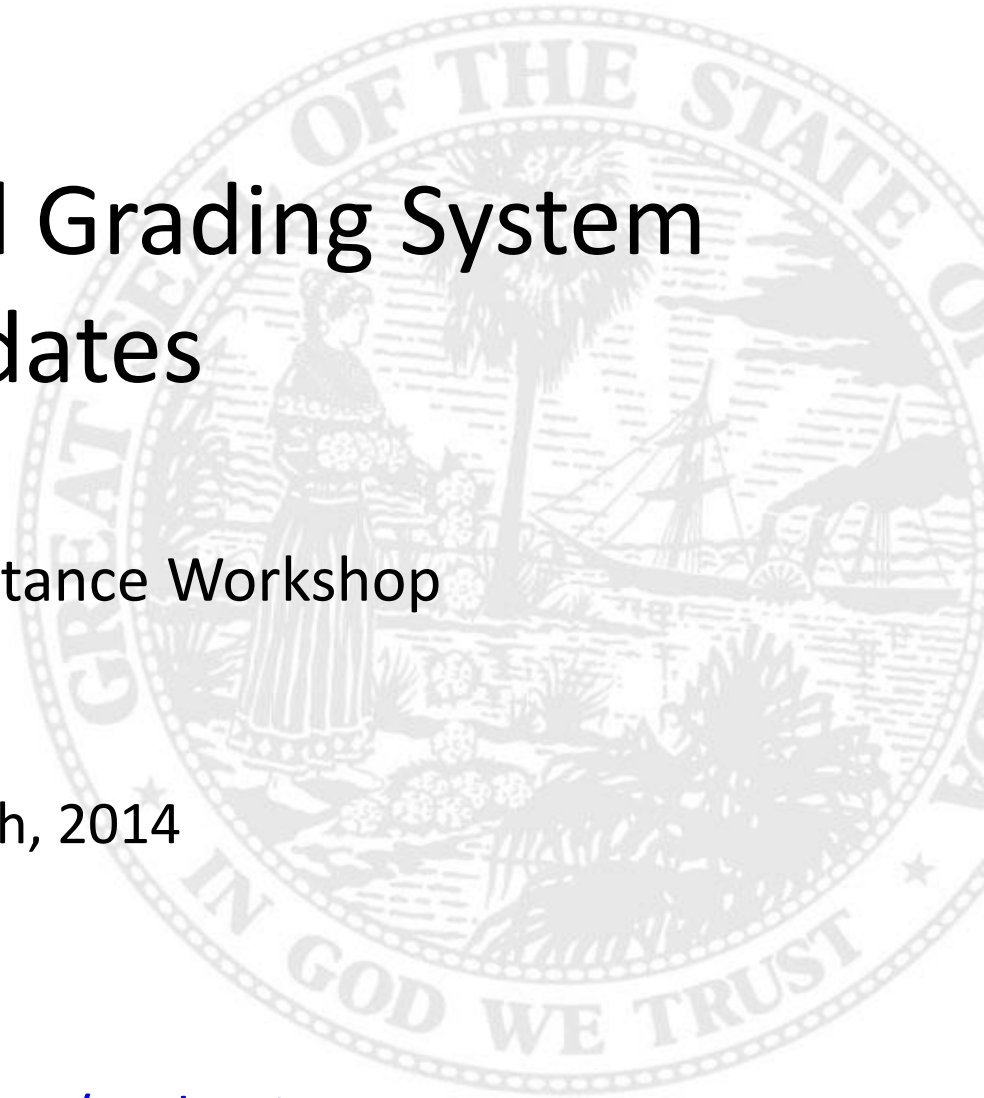


Florida's School Grading System Updates

Technical Assistance Workshop

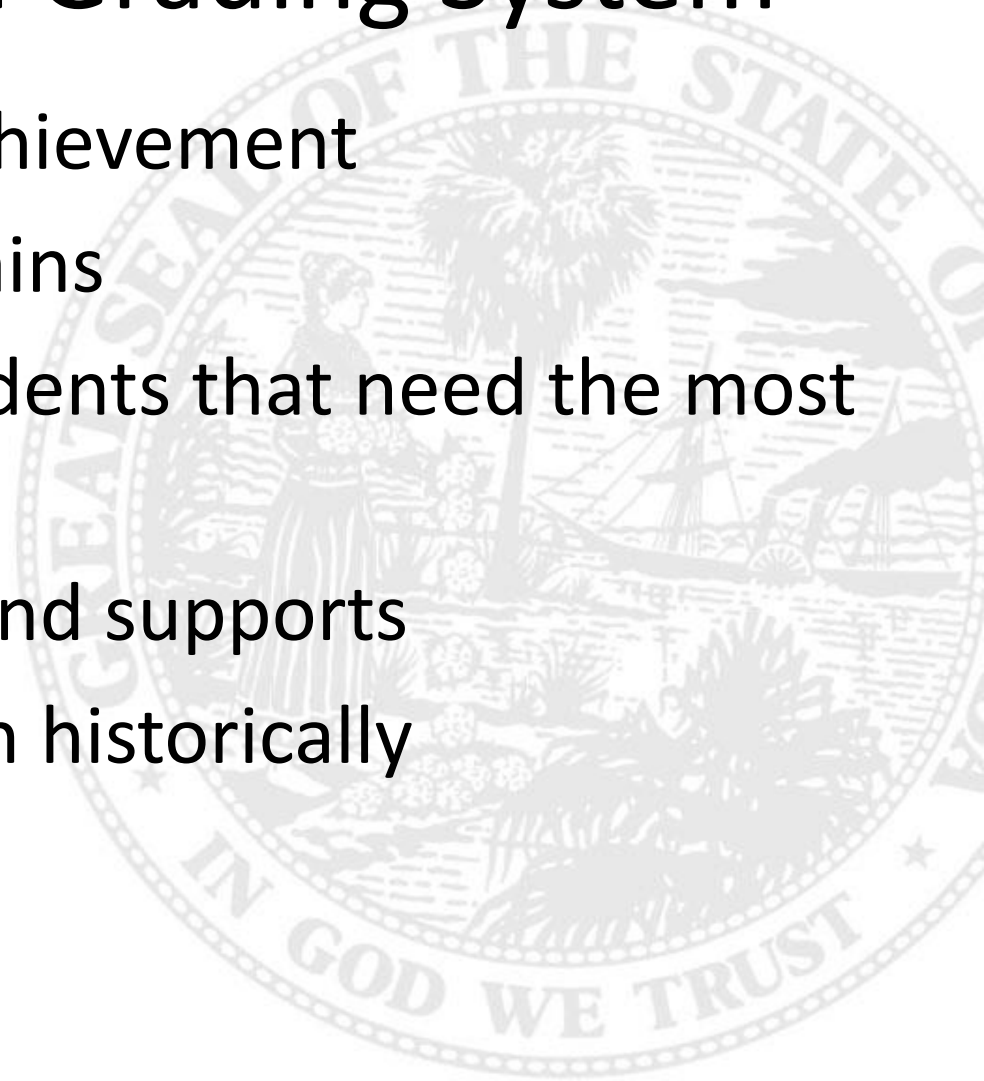
March, 2014

www.fldoe.org/evaluation



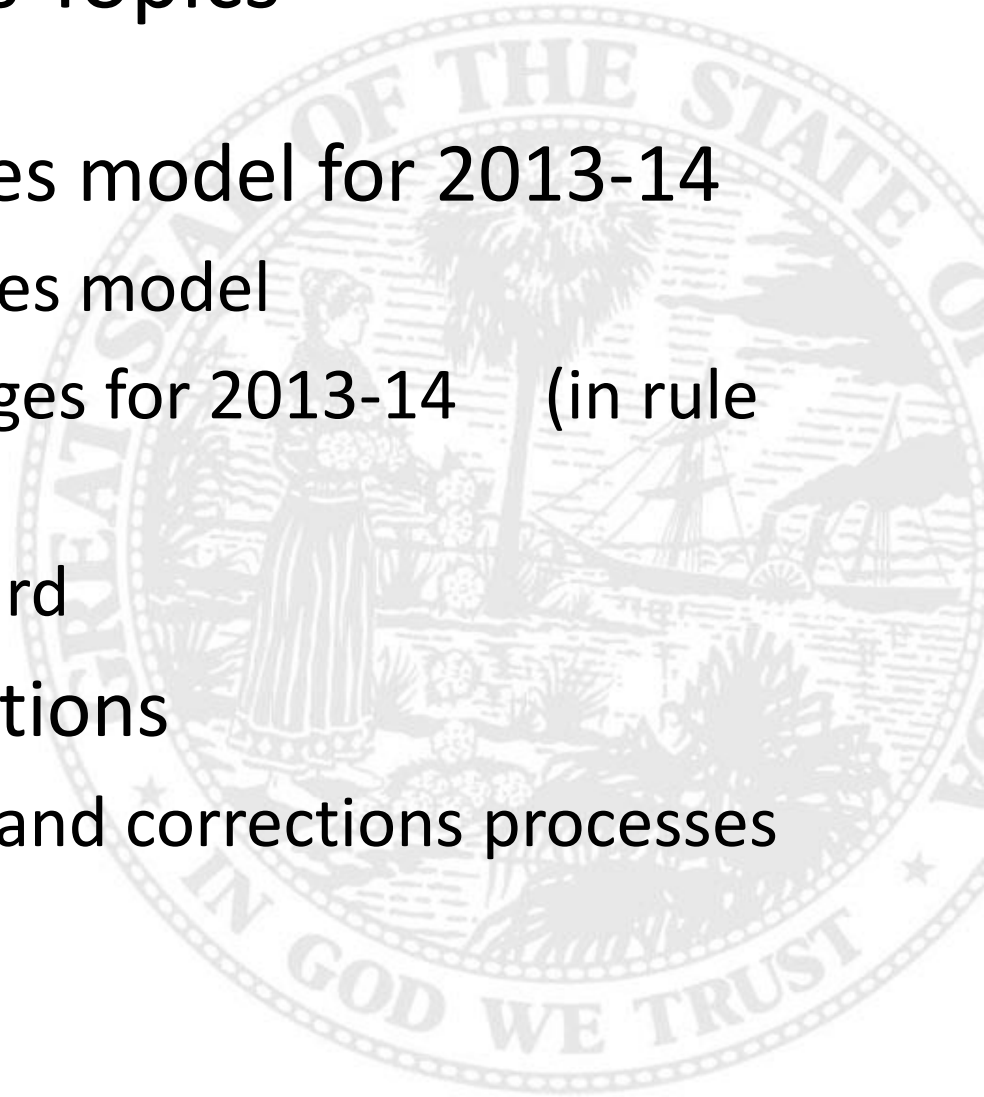
Florida's School Grading System

- Focus on student achievement
- Focus on learning gains
- Focus efforts on students that need the most support to succeed
- System of rewards and supports
- Model for the nation historically



Today's Topics

- Part 1: School Grades model for 2013-14
 - Current School Grades model
 - Accountability Changes for 2013-14 (in rule and law)
 - Focus Moving Forward
- Part 2: Web Applications
 - District Data review and corrections processes



School Grades Basic Model

	Reading	Math	Writing	Science
	Performance			
	50%			
	(100 points)	(100 points)	(100 points)	(100 points)
50%	Learning Gains All Students			
	(100 points)	(100 points)		
	Low 25% Learning Gains			
	(100 points)	(100 points)		
	(300 points)	(300 points)	(100 points)	(100 points)

Elementary Schools 2013-14 (No Changes)

Reading	Math	Writing	Science
Performance			
FCAT 2.0, FAA (100 points)	FCAT 2.0, FAA (100 points)	FCAT, FAA (100 points)	FCAT 2.0, FAA (100 points)
Learning Gains All Students			
FCAT 2.0, FAA (100 points)	FCAT 2.0, FAA (100 points)		
Low 25% Learning Gains			
FCAT 2.0 (100 points)	FCAT 2.0 (100 points)	(100 points)	(100 points)
(300 points)	(300 points)		
<p>Additional Requirements:</p> <ul style="list-style-type: none"> • Learning gains requirement for the Low 25% in reading and in math. <ul style="list-style-type: none"> - Earn at least 50 points for gains, or show required annual improvement in points. • Test at Least 90% of students, 95% to earn an "A." • Reading Performance requirement: $\geq 25\%$ satisfactory on FCAT 2.0 Reading. <p>Grade lowered one letter grade if learning gains or reading requirement not met.</p>			

High Schools 2013-14*

Assessment Components – 50%				“Other” Components – 50%			
Reading	Math (Algebra, Geometry)	Writing	Biology (Science)	Acceleration	Grad Rate	College Readiness	US History
Performance				Participation (100 points)	Overall (200 points) 100 – Four Yr 100 – Five Yr	Reading (100 points)	EOC (100 points)
FCAT 2.0, FAA (100 points)	EOC, FAA (100 points)	FCAT 2.0, FAA (100 points)	EOC, FAA (100 points)				
Learning Gains All Students				Performance (100 points)	At-Risk (100 points) 50 – Four-Yr 50 – Five Yr	Math (100 points)	
FCAT 2.0, FAA (100 points)	EOC, FAA (100 points)						
Low 25% Learning Gains							
FCAT 2.0 (100 points)	EOC (100 points)						
(300 points)	(300 points)	(100 points)	(100 points)	(200 points)	(300 points)	(200 points)	(100 points)
Additional Requirements:							
<ul style="list-style-type: none"> • Learning gains requirement for the Low 25% in reading and math. • Test at Least 90% of students, 95% to earn an “A.” • Meet the at-risk graduation rate target to earn an “A” - 65% or improvement targets. • Reading performance requirement ($\geq 25\%$ satisfactory or higher on FCAT 2.0 Reading). 							

* K-12 and 6-12 combination schools are graded on a 1700-point model, which adds middle-school acceleration to the HS model.

School Grading Scale For Elementary, Middle, and Combination School (No Changes)

Grade	Percentage of Points
A	66%
B	62%
C	54%
D	49%
F	<49%

- Elementary Schools = 800 possible points
- Middle Schools = 900 possible points
- Combination Schools (K-12, 6-12) = 1700 possible points

School Grading Scale For High Schools (School Type 03)

(Increase for 2013-14)

Grade	Percentage of Points
A	70%
B	65%
C	55%
D	50%
F	<50%

- High Schools = 1600 possible points

Rule Changes for 2013-14 School Grades:

School Grades Rule - 6A-1.09981

- Rule revisions to implement changes in statute (s. 1008.34, F.S.)
 - Grading co-located schools
 - Cell-size re-set at 10
- Revise percent-tested calculation to comply with the federal Elementary and Secondary Education Act (ESEA)
 - For school grades, the participation-rate calculation will no longer be limited to students who are full-year enrolled; will be based on students enrolled at the time of testing.
- Extension of the one-letter-grade-drop limit (safety net provision) for school grades

College Readiness Rule 6A-10.0315

- Updated Postsecondary Readiness Cut Scores

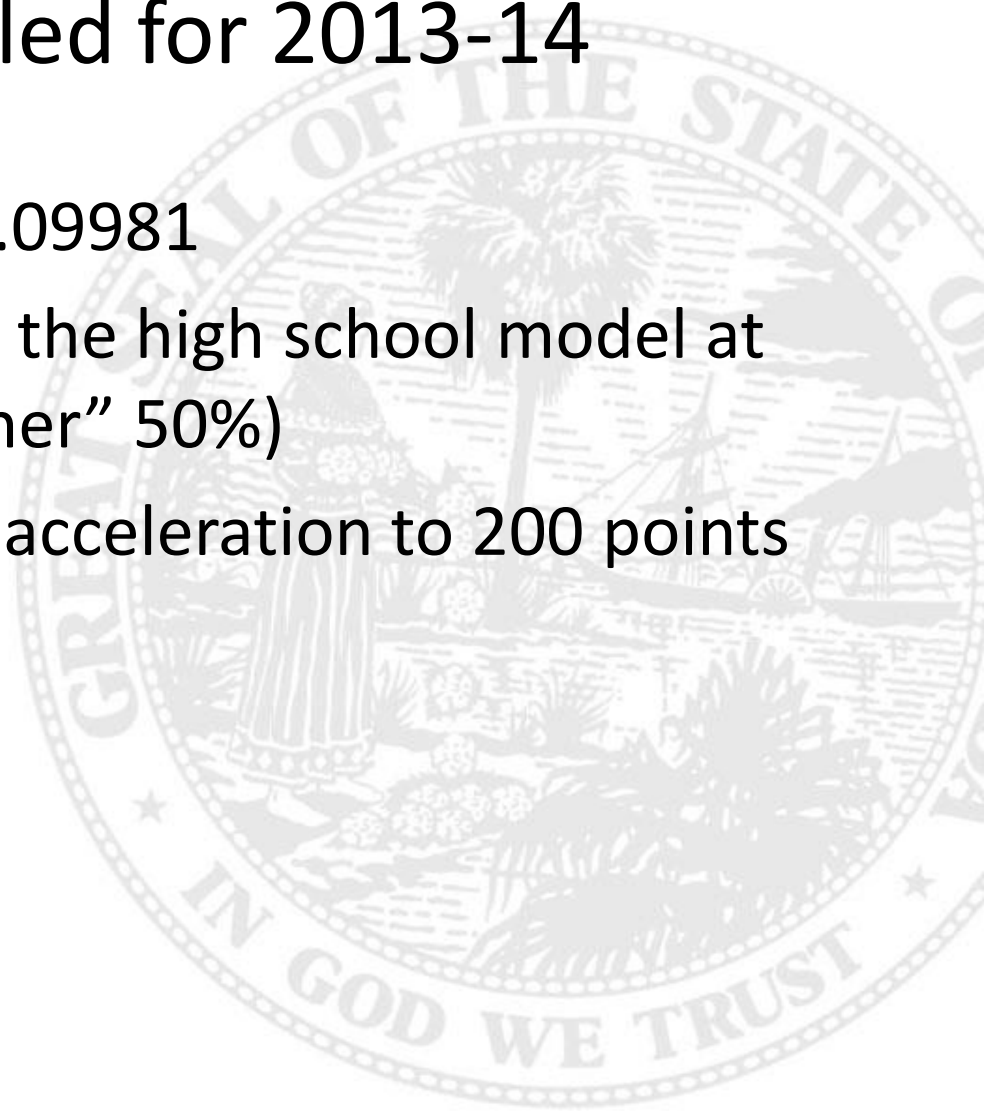
ESE Centers Rule 6A-1.099828

- Accountability for ESE Centers (new rule but already implemented based on the law change)

School Grades Changes Already Scheduled for 2013-14

Changes scheduled in 6A-1.09981

- Include U.S. History in the high school model at 100 points (in the “other” 50%)
- Reduce the points for acceleration to 200 points



Changes Required in State Legislation

Cell Size (s. 1008.34, F.S.)

- Re-set at 10 in reading and math performance and gains as a criterion for receiving a grade

Co-located Schools (s. 1008.34, F.S.)

- Co-located schools have separate MSID numbers but operate at the same physical site. If one or more schools at the same site would not qualify for a grade or a school improvement rating, then student performance data for all of the schools will be aggregated and all of the schools will receive the same school grade.

Co-located Schools

- In applying the school-grading provision for co-located schools, the Department of Education will consider only those co-located schools with students enrolled at tested grade levels.
- When a co-located school does not qualify for a grade because the school has too few students to qualify for a rating or a grade, a single grade will be calculated for all co-located schools at the same site (s. 1008.34(3)(a)3).
- The combined grade will include assessment data for all co-located schools at the same site.
- The Department will work with districts to identify co-located schools this fall.

School Grade Change Required by ESEA

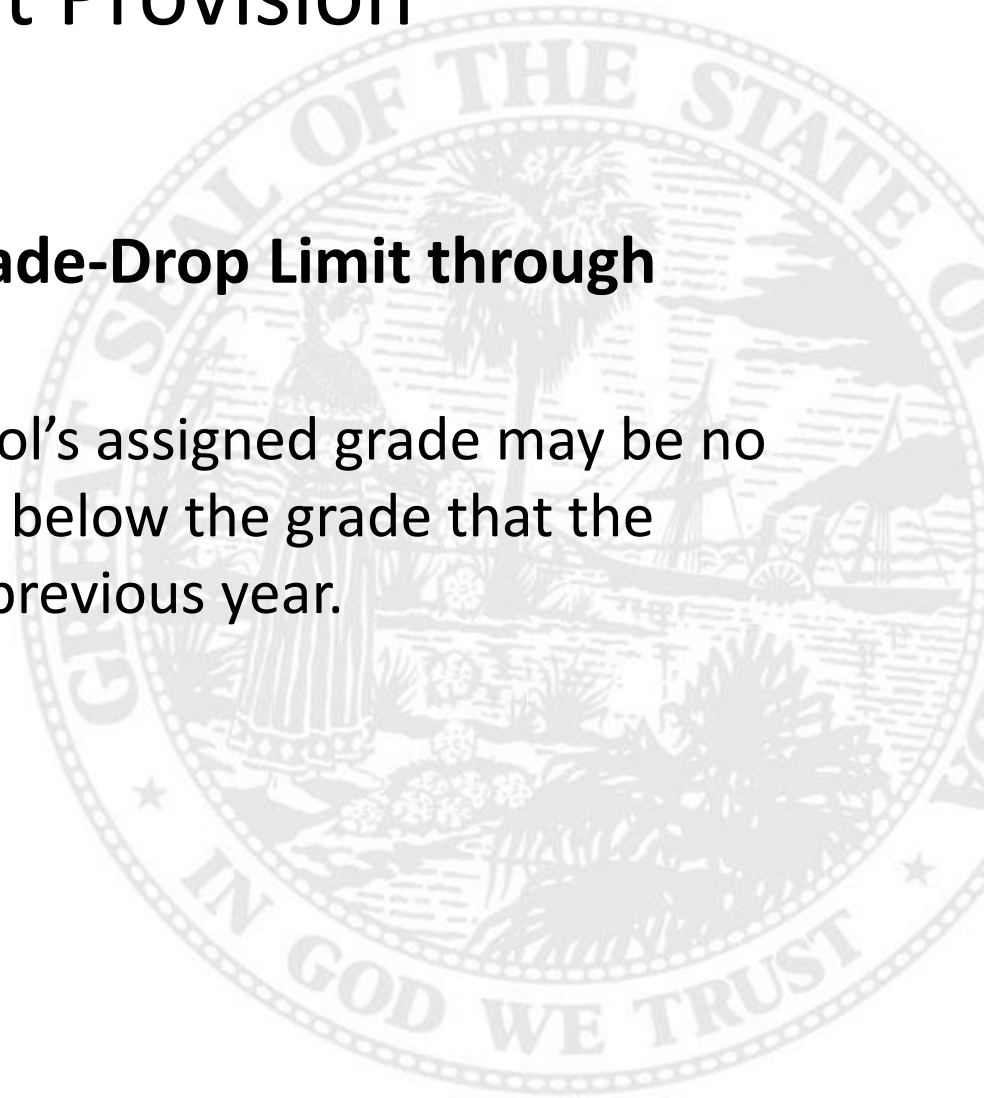
Percent Tested (Participation Rate)

- Previously applied only to full-year-enrolled students in the school grades calculation.
- ESEA requires that the percent-tested figure apply to all students enrolled at the school who would be eligible for testing, not just to students who were full-year-enrolled.
 - To comply with ESEA, we would apply the same calculation for percent-tested that Florida previously used in AYP reporting.

Safety Net Provision

Extension of One-Letter-Grade-Drop Limit through 2014-15

- Under the provision, a school's assigned grade may be no lower than one letter grade below the grade that the school was assigned in the previous year.



Postsecondary Readiness

Cut Scores Updated in Rule 6A-10.0315, FAC

Effective for students taking the assessments after 10/22/13

(Revised Cut Scores are **in Red**)

CPT

Math	72
Reading	83

SAT

Verbal	440
Math	440

ACT

Reading	19
Math	19

P.E.R.T.

Reading	106
Math	114

School Improvement Ratings

Rule 6A-1.099822

- Alternative schools (including alternative charter schools) choose whether to receive a school grade or a school improvement rating.
- ESE center schools also choose whether to receive a school grade or a school improvement rating (rule: 6A-1.099828).
- Comparison of Reading and Mathematics learning gains.
- The learning gains of students in the school are compared to the learning gains of those same students in the prior year.
- A school must have at least 10 students in reading and at least 10 students in math with required scores to receive a rating.

School Improvement Ratings

- Improving
 - 5 points or more increase in percent making learning gains in both reading and mathematics
- Maintaining
 - Less than 5 points increase or decrease in percent making learning gains in reading and mathematics
- Declining
 - 5 points or more decrease in points earned for percent making learning gains in reading and mathematics

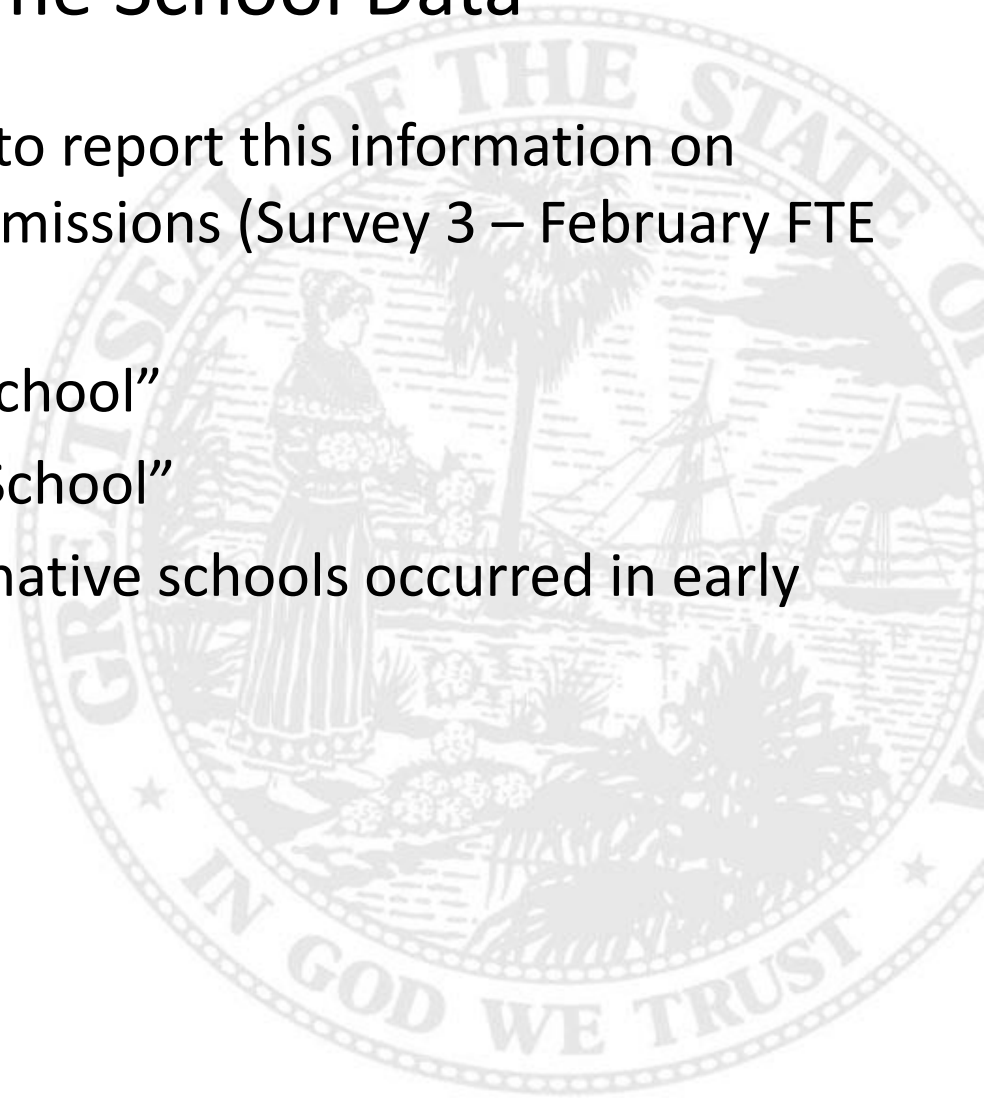
The final rating is no higher than the lowest-rated subject. E.g., if reading is “improving” but math is “declining,” the final rating is “declining.”

Use of Assessment Results in a Home School's Grade

- If an alternative school chooses a school improvement rating, achievement scores and learning gains of students at the alternative school are included in the home school's grade.
 - (Not applicable to alternative charter schools)
- “Home school” is the school to which the student would be assigned if he/she were not enrolled in the alternative school.

Reporting Home School Data

- School districts are required to report this information on annual student database submissions (Survey 3 – February FTE reporting period).
 - “School Number, Zoned School”
 - “District Number, Zoned School”
- The process to identify Alternative schools occurred in early 2014.



Legislative Changes

School Improvement Ratings for 2013-14

(s. 1008.341, F.S.)

(Rule 6A-1.099822)

Percent Tested

- Revised to 80% for school improvement ratings.
- Schools that test less than 90% are not eligible for “improving” rating.

High School Retakes

- High school retakes scores (for graduation tests) will now be included in learning gains calculations for school improvement ratings.

These changes are intended to increase the number of schools that qualify for a rating.

ESE Centers: Accountability

- Rule 6A-1.099828, F.A.C. - new rule to implement s.1008.3415, Florida Statutes
 - Defines ESE center school for accountability purposes
 - Process to identify ESE center schools
 - ESE centers choose whether to receive a school grade or a school improvement rating
 - School improvement ratings for ESE centers are calculated the same as for alternative schools under Rule 6A-1.09981
 - Crediting back scores to home schools: Scores for students at ESE centers that choose a rating are credited back to home schools, except for scores at emergent levels on the FAA for students who have never been enrolled in a school other than an ESE center during their time in the district

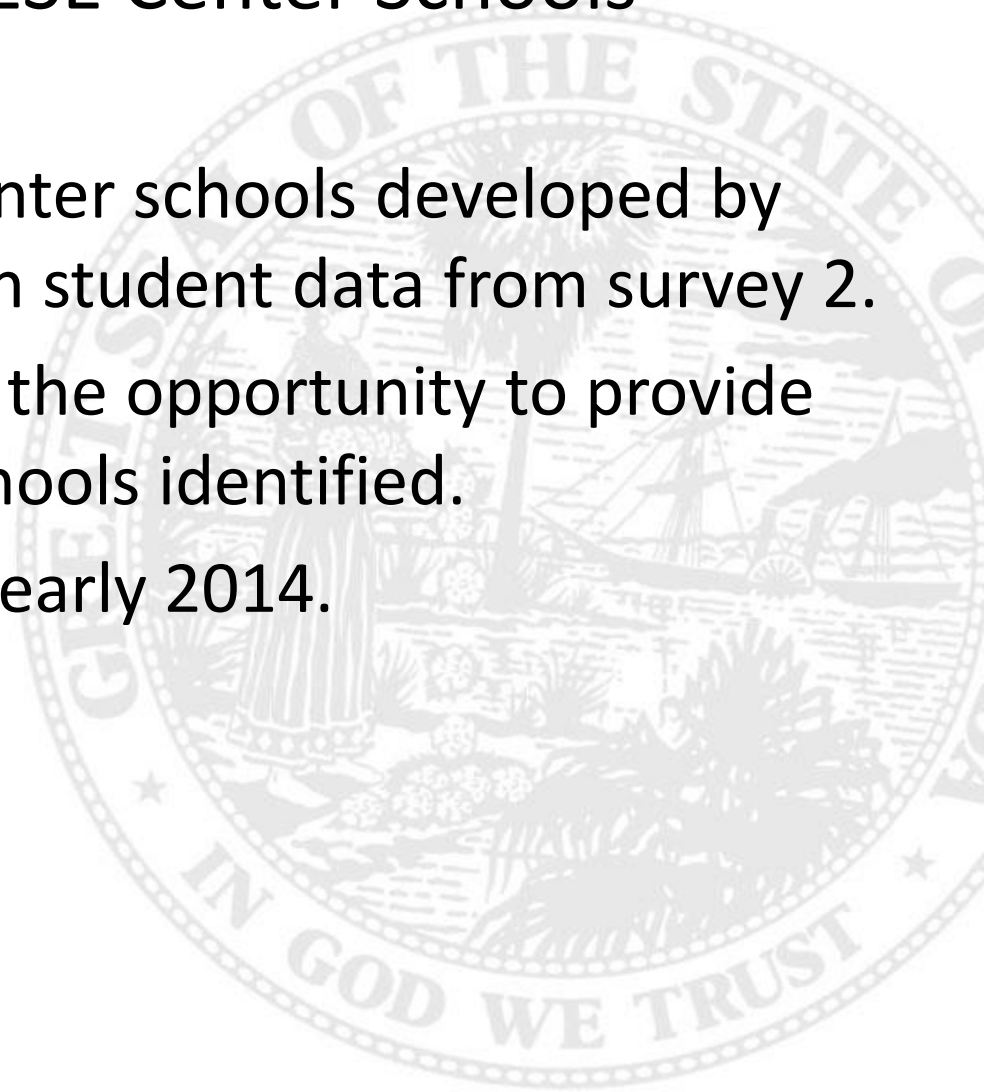
Definition of ESE Center

Rule 6A-1.099828, F.A.C

- ESE center schools are designed specifically to meet the needs of students with disabilities.
- An ESE center school is a separate public school in which all students in grades K-12 in attendance are identified as students with disabilities.
- For separate day schools to qualify as ESE centers, all students in grades K-12 are reported on the “Exceptional Student, IDEA Educational Environments” data element as attending a separate school (Code D).

Identification of ESE Center Schools

- Preliminary list of ESE center schools developed by the department based on student data from survey 2.
- School districts will have the opportunity to provide input annually on the schools identified.
- This process occurred in early 2014.

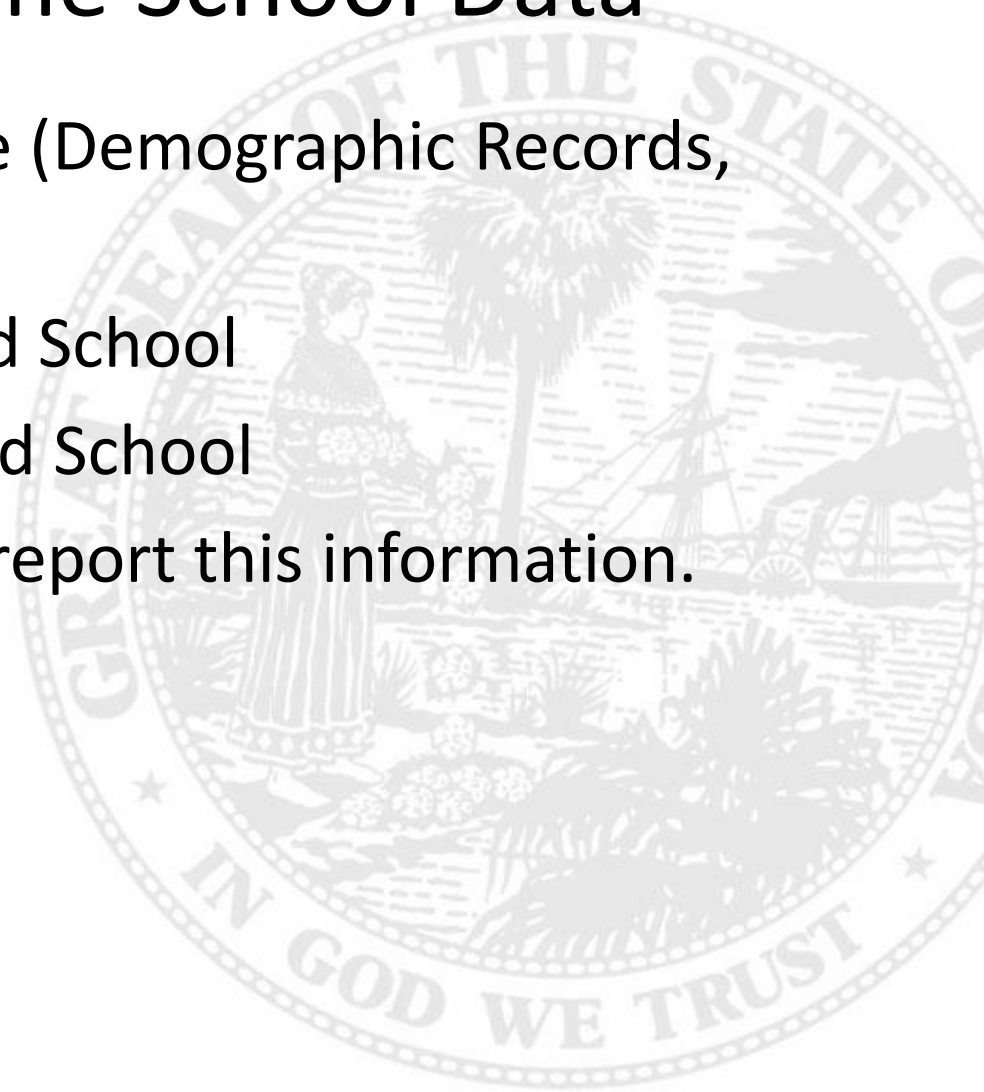


Use of Assessment Results in a Home School Grade

- Scores credited back to home school if ESE center chooses a rating instead of a grade (not applicable to charter ESE centers).
- Exception: No crediting back for scores at level 1-3 on the FAA if student has always been enrolled in an ESE center while in the district.
- The home school is the school to which the student would be assigned if he/she were not enrolled in the ESE center school.

Reporting Home School Data

- On the Student Database (Demographic Records, Survey 3):
 - School Number, Zoned School
 - District Number, Zoned School
- Districts are required to report this information.



Focus Moving Forward

School Grades

- Improving our education accountability system to further ensure transparency and fairness while providing meaningful and useful information to our parents and educators about how our students and schools are performing
- Key characteristics identified in the Governor's Education Summit this summer:
 - Stability through transition to new assessments and standards
 - Clarity and transparency
 - Coherence
 - Fairness
 - Reliability, accuracy, and sustainability
 - Objective basis for measuring student learning outcomes
 - Effectiveness in motivating achievement

Executive Order 13-276

School Accountability System

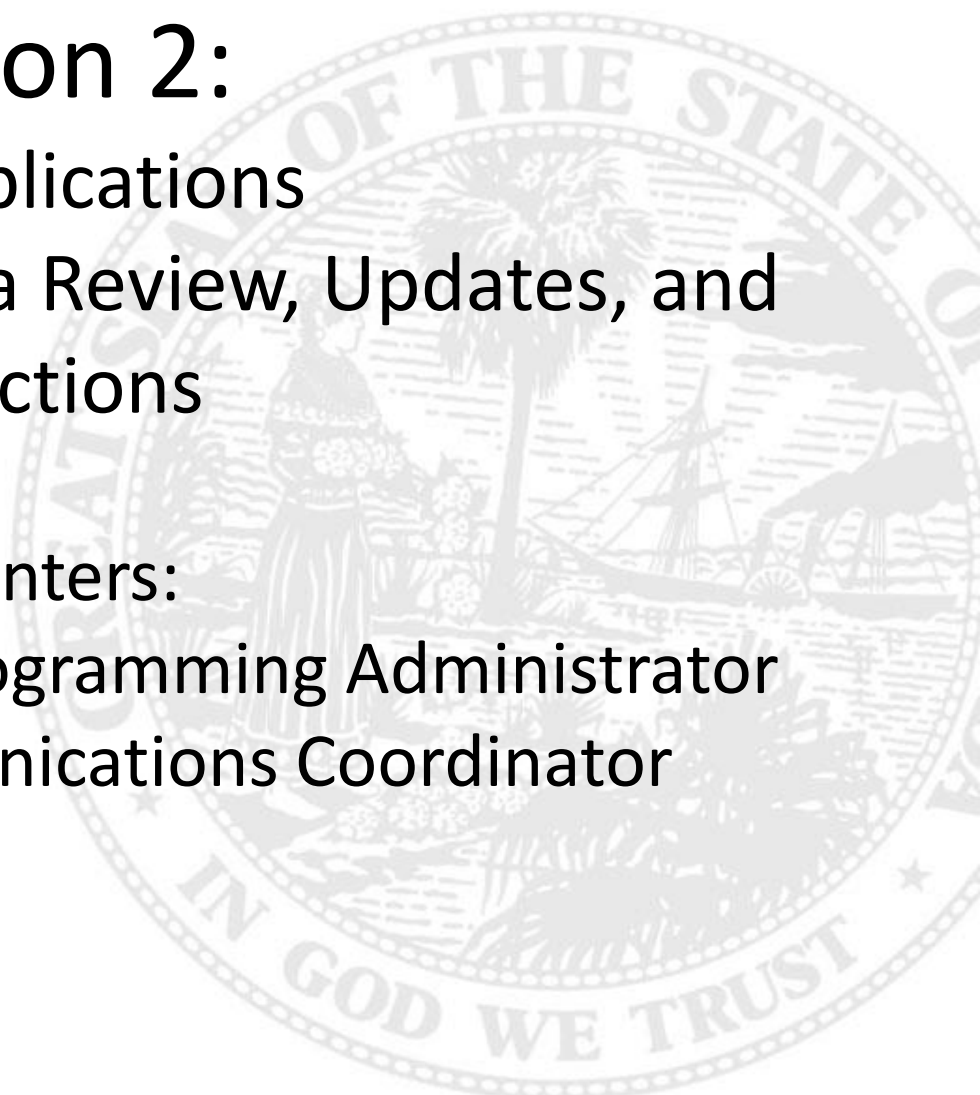
- To provide stability only specific changes shall be made to school grades during 2013-14 and 2014-15
 - Include US History EOCs
 - Changes directed by statute
 - One letter grade drop provision through 2014-15
- Florida address the handling of ELL performance in its waiver and in the school grades calculation
 - Florida sent communication to Secretary Duncan
 - ELL student performance
 - Special diplomas in the 5 year graduation rate
- Commissioner and the State Board will continue to make recommendations to the Governor and Legislature to further ensure Florida's education accountability system is fair and transparent

Contact Information and Resources

Questions about Florida school grading or other accountability processes?

See information resources and guides at
<http://schoolgrades.fldoe.org/>

Contact the Bureau of Accountability Reporting at
(850) 245-0411 or
evalnrpt@fldoe.org

The seal of the State of Florida is visible in the background, featuring a central figure holding a scale and a sword, surrounded by a circular border with the text "SEAL OF THE STATE OF FLORIDA" and "IN GOD WE TRUST".

Session 2:

Web Applications for Accountability Data Review, Updates, and Corrections

Presenters:

Tracy Halley, Systems Programming Administrator
Chené Olgar, Communications Coordinator

Web Applications

- Used for district data review and corrections
- Web Applications opening in April (exact date TBD):
 - Student Data Updates
 - Prior-Year Data Corrections
 - Accountability School Types
 - Assessment Corrections for available assessments
 - Re-open in mid June 2014 for Spring Assessments (exact date TBD)
- No High School Retakes application
 - Fall 2013 FCAT 2.0 Reading Retakes will be included in Assessment Corrections
 - Fall 2012 FCAT 2.0 Reading Retakes will be included in Prior Year Data
- Districts will receive:
 - Notification of opening and closing for each web application
 - Detailed information for each web application when they open
- Processing will occur daily

ShareFile (NEW)

(Replaces old FTP site)

- Username: email address
- Password: set by user
- Who needs access?
 - Primary Accountability Coordinators will receive an email requesting this information
 - Multiple users can have access to the district's folder through separate usernames and passwords
- Individual text files no longer require a password for access due to the increased security

Accessing ShareFile

- Users will receive an email from either:
 - Matt Breeding or Rod King - mail@sf-notifications.com
 - **Do not reply to this email.**

Florida Department of
EDUCATION

matt breeding has shared the folder **Dist_01** with you.

> [Click here to view this folder](#)

ShareFile is a tool for sending, receiving, and organizing your business files online. It can be used as a password-protected area for sharing information with clients and partners, and it's an easy way to send files that are too large to e-mail.

Trouble with the above link? You can copy and paste the following URL into your web browser:
<https://fldoe.sharefile.com/f/fofe90f1-106c-45a5-985b-f96fceedf808e>

Powered By Citrix ShareFile 2014

Florida Department of
EDUCATION

Setting Your Password

Login Information

Important: Keep your account login credentials in a safe place and don't share them with others.

Username:

New Password: *

Confirm Password: *

- ▶ Password must have at least 12 characters
- ▶ Password must contain both upper and lower case letters.
- ▶ Password must contain at least one number.

Login URL:

Please confirm your personal information.

First Name: *

Last Name: *

Company:

Time Zone:

Any use of your personal information is governed by the terms of our [privacy policy](#).
We do not sell, trade, or rent your personal information to third parties.

- Review all required(*) fields
- Click "Save"



Accessing Your Folder

- After clicking “Save”, you will see your folder.

The screenshot displays the Florida Department of Education's file management system. At the top left is the logo for the Florida Department of Education. On the top right, there is a search bar labeled "Search Files and Folders" with a magnifying glass icon and a "Log Out" link. Below the search bar is a teal navigation bar with "Home", "My Settings", and "Apps" options. The main content area is divided into a left sidebar with an "Inbox" icon and a central pane. The central pane has a "Folders" header with a star icon for "Favorite Folders" and three circular navigation icons. Below this is a table of folders. The table has a "View" dropdown set to a grid view. The table columns are "Title", "MB", "Uploaded", and "Creator". One folder is listed: "Dist_01" with a star icon, 8.12 MB, uploaded on 2/17/14 at 3:17P, and created by m. breeding.

Title ▲	MB	Uploaded	Creator
☆ Dist_01	8.12	2/17/14 3:17P	m. breeding

- Click on your folder.

Accessing Your Files

- After selecting your folder, you will see zip files

The screenshot shows the Florida Department of Education's file management interface. At the top left is the logo for the Florida Department of Education. On the right, there is a search bar labeled "Search Files and Folders" and a "Log Out" link. Below the search bar is an "Advanced Search" link. The main interface has a teal header with "Home", "My Settings", and "Apps" tabs. On the left, there is a sidebar with "Inbox" and "More Options" (Copy Folder, Get Direct Link). The main content area shows a "Folders" section with "Dist_01" selected. Below this is a table of files with columns for "Title", "MB", "Uploaded", and "Creator".

	Title ▲	MB	Uploaded	Creator	
<input type="checkbox"/>	Assessment Matching.zip	1.49	2/19/14 10:06A	T. Halley	
<input type="checkbox"/>	Prior Year Data.zip	1.88	2/19/14 10:06A	T. Halley	
<input type="checkbox"/>	Student Data Updates.zip	0.69	2/19/14 10:06A	T. Halley	

At the bottom of the interface, there is a checkbox labeled "Email me when a file is:" with "Uploaded to this folder" selected.

- Check the box to the left of the name of the zip file you want to download
- Click “Download”
- Save the file to your computer
- Unzip the file to access your text files and the file formats

ShareFile Wrap-up:

- After setting your pass word you can set up ShareFile using an FTP client but it is not required. Contact our office for more information.
- Direct all questions about the new FTP site to EVALNRPT@FLDOE.org

Web Application Review



Contact Information and Resources

Questions about Florida school grading or other accountability processes?

See information resources and guides at <http://schoolgrades.fldoe.org/> .

Contact the Bureau of Accountability Reporting at
(850) 245-0411 or
evalnrpt@fldoe.org