

## SESIR Incident Summaries

LAKE	1999 - 2000		2000 - 2001		2001 - 2002	
<b>Time of Incidents</b>						
	%	<i>Raw Data</i>	%	<i>Raw Data</i>	%	<i>Raw Data</i>
<b>During School Hours</b>	<b>98.21</b>	2,415	<b>97.19</b>	1,972	<b>98.51</b>	2,316
<b>Not During School Hours</b>	<b>1.34</b>	33	<b>1.87</b>	38	<b>1.23</b>	29
<b>Unknown</b>	<b>0.45</b>	11	<b>0.94</b>	19	<b>0.26</b>	6
<b>Total Number of Incidents</b>		2,459		2,029		2,351
<b>Persons Involved</b>						
	%	<i>Raw Data</i>	%	<i>Raw Data</i>	%	<i>Raw Data</i>
<b>Students</b>	<b>99.92</b>	2,457	<b>100.00</b>	2,029	<b>100.00</b>	2,351
<b>Non-Students</b>	<b>0.00</b>	0	<b>0.00</b>	0	<b>0.00</b>	0
<b>Both Students and Non-Students</b>	<b>0.08</b>	2	<b>0.00</b>	0	<b>0.00</b>	0
<b>Unknown</b>	<b>0.00</b>	0	<b>0.00</b>	0	<b>0.00</b>	0
<b>Total Number of Incidents</b>		2,459		2,029		2,351
<b>Location of Incidents</b>						
	%	<i>Raw Data</i>	%	<i>Raw Data</i>	%	<i>Raw Data</i>
<b>School Grounds</b>	<b>98.25</b>	2,416	<b>97.83</b>	1,985	<b>98.60</b>	2,318
<b>School Sponsored Activity</b>	<b>0.20</b>	5	<b>0.44</b>	9	<b>0.30</b>	7
<b>School Sponsored Transportation</b>	<b>1.55</b>	38	<b>1.72</b>	35	<b>1.11</b>	26
<b>Total Number of Incidents</b>		2,459		2,029		2,351
<b>Number of Schools Reporting No SESIR Incidents</b>						
	%	<i>Raw Data</i>	%	<i>Raw Data</i>	%	<i>Raw Data</i>
<b>Elementary <sup>2</sup></b>	<b>4.76</b>	1	<b>4.76</b>	1	<b>4.76</b>	1
<b>Middle <sup>3</sup></b>	<b>0.00</b>	0	<b>0.00</b>	0	<b>0.00</b>	0
<b>High <sup>4</sup></b>	<b>12.50</b>	1	<b>14.29</b>	1	<b>14.29</b>	1
<b>Combination <sup>5</sup></b>	<b>100.00</b>	1	<b>100.00</b>	1	<b>100.00</b>	1
<b>Charter</b>	<b>100.00</b>	2	<b>25.00</b>	1	<b>50.00</b>	3
<b>Total Number of Schools</b>		5		4		6

<sup>1</sup> Some schools may have had no SESIR incidents occur.

<sup>2</sup> Elementary includes Pre-Kindergarten through Grade Five for 1999-2000. Elementary includes Kindergarten through Grade Five for 2000-2001 and 2001-2002.

<sup>3</sup> Middle includes Grades Six through Eight for 1999-2000, 2000-2001 and 2001-2002.

<sup>4</sup> High includes Grades Nine through Twelve for 1999-2000, 2000-2001 and 2001-2002.

<sup>5</sup> Includes schools which combine elementary, middle, or high groupings or overlap grade levels, e.g., K-6, 6-12, or K-12.

Please note that SESIR incidents are reported by schools by incident, not by individual student.

Florida Department of Education  
Division of Student Achievement and Articulation  
Bureau of Safety and School Support

## SESIR Totals

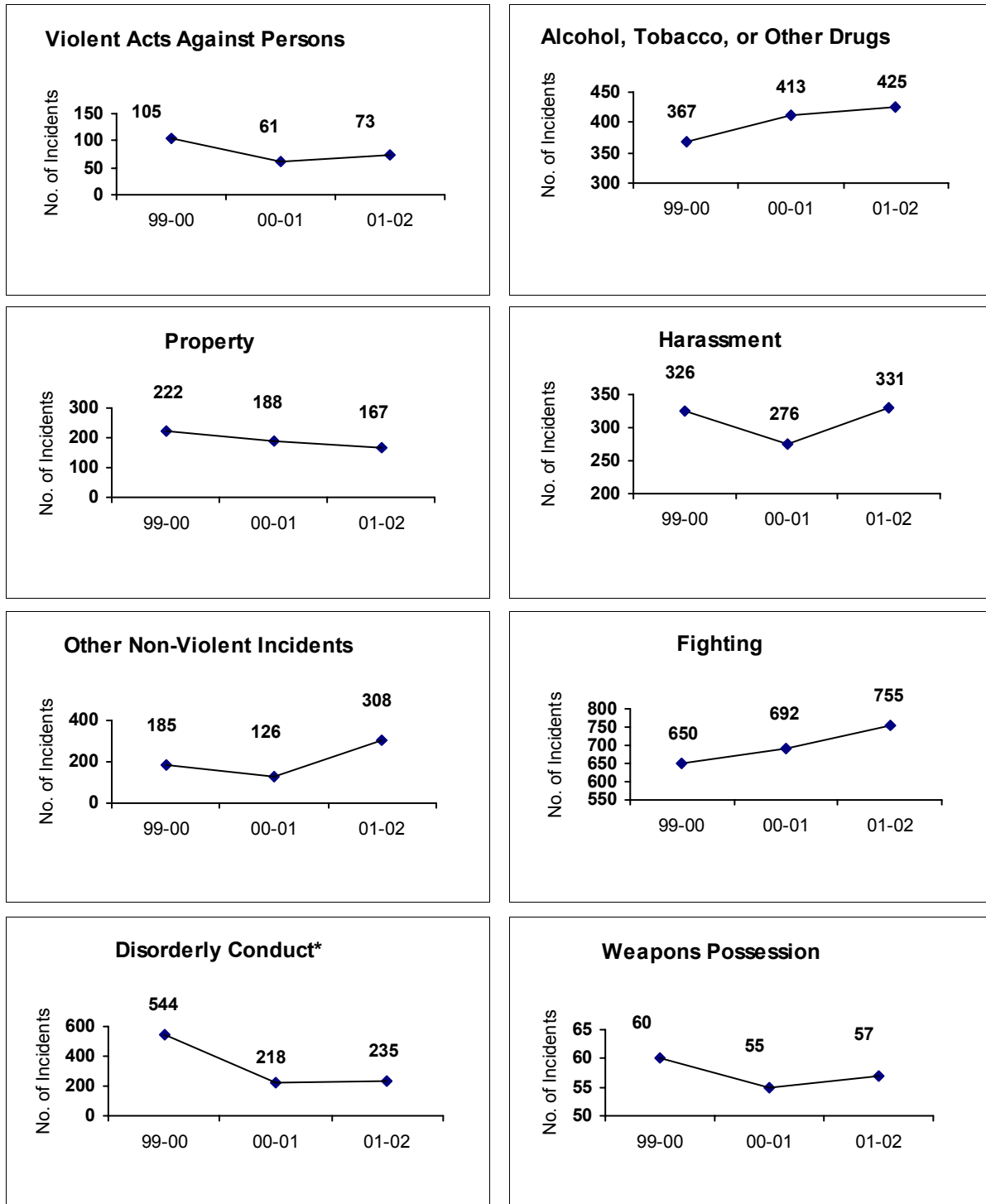
<b>LAKE</b>	<b>1999 - 2000</b>		<b>2000 - 2001</b>		<b>2001 - 2002</b>	
<b>Student Population:</b>	30,940		32,439		33,752	
	<i>Per 1,000</i>	<i>Raw Data</i>	<i>Per 1,000</i>	<i>Raw Data</i>	<i>Per 1,000</i>	<i>Raw Data</i>
<b>Violent Acts Against Persons</b>	<b>3.39</b>	<b>105</b>	<b>1.88</b>	<b>61</b>	<b>2.16</b>	<b>73</b>
Homicide	0.00	0	0.00	0	0.00	0
Sexual Battery	0.00	0	0.03	1	0.06	2
Robbery	0.13	4	0.00	0	0.03	1
Battery	3.26	101	1.85	60	2.07	70
Kidnapping	0.00	0	0.00	0	0.00	0
<b>Alcohol, Tobacco, or Other Drugs</b>	<b>11.86</b>	<b>367</b>	<b>12.73</b>	<b>413</b>	<b>12.59</b>	<b>425</b>
Drugs	3.56	110	4.69	152	4.56	154
Alcohol	0.87	27	0.80	26	0.56	19
Tobacco	7.43	230	7.24	235	7.47	252
<b>Property</b>	<b>7.18</b>	<b>222</b>	<b>5.80</b>	<b>188</b>	<b>4.95</b>	<b>167</b>
Breaking/Entering	0.06	2	0.12	4	0.00	0
Larceny/Theft	4.78	148	4.25	138	3.41	115
Motor Vehicle Theft	0.03	1	0.00	0	0.06	2
Arson	0.10	3	0.09	3	0.00	0
Vandalism	2.20	68	1.33	43	1.48	50
<b>Harassment</b>	<b>10.54</b>	<b>326</b>	<b>8.51</b>	<b>276</b>	<b>9.81</b>	<b>331</b>
Threat/Intimidation	8.73	270	7.74	251	9.04	305
Sexual Harassment	1.81	56	0.77	25	0.77	26
<b>Other Non-Violent Incidents</b>	<b>5.98</b>	<b>185</b>	<b>3.88</b>	<b>126</b>	<b>9.13</b>	<b>308</b>
Sexual Offense	1.52	47	0.59	19	1.84	62
Trespassing	0.16	5	0.28	9	0.30	10
Other Major	4.30	133	3.02	98	6.99	236
<b>Fighting</b>	<b>21.01</b>	<b>650</b>	<b>21.33</b>	<b>692</b>	<b>22.37</b>	<b>755</b>
<b>Disorderly Conduct</b>	<b>17.58</b>	<b>544</b>	<b>6.72</b>	<b>218*</b>	<b>6.96</b>	<b>235</b>
<b>Weapons Possession</b>	<b>1.94</b>	<b>60</b>	<b>1.70</b>	<b>55</b>	<b>1.69</b>	<b>57</b>
<b>TOTAL</b>	<b>79.48</b>	<b>2,459</b>	<b>62.55</b>	<b>2,029</b>	<b>69.66</b>	<b>2,351</b>

Note: SESIR data for 1999-2000 as of November 2000; for 2000-2001 as of November 2001 and for 2001-2002 as of November, 2002. Population data from survey 5 for 1999-2000 as of March 2001; and for 2000-2001 as of November 2001 and for 2001-2002 as of November.

\* Any substantial decrease may be due to clarification of types of actions that should be reported in this category. Schools had been reporting minor disorderly conduct in classrooms when they should have been reporting serious campus disruptions such as bomb threats.

# SESIR Totals: Trends By Categories

## LAKE



\* This substantial decrease may be due to clarification of types of actions that should be reported in this category. Schools had been reporting minor disorderly conduct in classrooms when they should have been reporting serious campus disruptions such as bomb threats.

Please note graph trends should not be compared because each graph reflects a different Y-Axis scale.

# Discipline Data

**LAKE**

## Discipline Actions by Grade Level

### 1999-2000

Grade Level	Total Population	In-School Suspension	Out-of-School Suspension	Expulsion
Elementary	14,142	292	854	2
Middle	6,632	1,929	2,351	8
High	7,771	862	2,032	2

### 2000-2001

Grade Level	Total Population	In-School Suspension	Out-of-School Suspension	Expulsion
Elementary	15,654	338	1,212	0
Middle	7,865	1,113	2,856	11
High	8,920	20	2,930	10

### 2001-2002

Grade Level	Total Population	In-School Suspension	Out-of-School Suspension	Expulsion
Elementary	15,937	458	1,191	1
Middle	8,218	1,713	2,753	15
High	9,597	73	2,785	16

## Discipline Actions per 1,000 Students by Grade Level

### 1999-2000

Grade Level	Total Population	In-School Suspension	Out-of-School Suspension	Expulsion
Elementary	14,142	20.65	60.39	0.14
Middle	6,632	290.86	354.49	1.21
High	7,771	110.93	261.49	0.26

### 2000-2001

Grade Level	Total Population	In-School Suspension	Out-of-School Suspension	Expulsion
Elementary	15,654	21.59	77.42	0.00
Middle	7,865	141.51	363.13	1.40
High	8,920	2.24	328.48	1.12

### 2001-2002

Grade Level	Total Population	In-School Suspension	Out-of-School Suspension	Expulsion
Elementary	15,937	28.74	74.73	0.06
Middle	8,218	208.44	335.00	1.83
High	9,597	7.61	290.19	1.67

Florida Department of Education  
Division of Student Achievement and Articulation  
Bureau of Safety and School Support

# Discipline Data

**2000 - 2001**

LAKE	Total # Students	In-School Suspensions			Out-of-School Suspensions			Expulsions		
		# Actions <sup>1</sup>	Students Suspended <sup>2</sup>	% <sup>3</sup>	# Actions <sup>1</sup>	Students Suspended <sup>2</sup>	% <sup>3</sup>	# Actions <sup>1</sup>	Students Expelled <sup>2</sup>	% <sup>3</sup>
<b>ELEMENTARY</b>	15,654	338	230	1.47	1,212	675	4.31	0	0	0.00
<b>GENDER</b>										
Female	7,650	44	30	0.39	219	140	1.83	0	0	0.00
Male	8,004	294	200	2.50	993	535	6.68	0	0	0.00
<b>RACE</b>										
Asian	145	0	0	0.00	2	2	1.38	0	0	0.00
Black	2,586	81	61	2.36	558	299	11.56	0	0	0.00
Hispanic	1,312	67	43	3.28	40	29	2.21	0	0	0.00
Indian	33	0	0	0.00	0	0	0.00	0	0	0.00
Multiracial	179	3	2	1.12	22	14	7.82	0	0	0.00
White	11,399	187	124	1.09	590	331	2.90	0	0	0.00
<b>MIDDLE</b>	7,865	1,113	540	6.87	2,856	1,340	17.04	11	10	0.13
<b>GENDER</b>										
Female	3,889	280	141	3.63	853	432	11.11	3	3	0.08
Male	3,976	833	399	10.04	2,003	908	22.84	8	7	0.18
<b>RACE</b>										
Asian	83	0	0	0.00	6	5	6.02	0	0	0.00
Black	1,226	318	133	10.85	1,069	438	35.73	3	3	0.24
Hispanic	650	69	38	5.85	169	86	13.23	0	0	0.00
Indian	19	1	2	5.26	2	2	10.53	0	0	0.00
Multiracial	42	7	4	9.52	16	8	19.05	0	0	0.00
White	5,845	718	364	6.23	1,594	801	13.70	8	7	0.12
<b>HIGH</b>	8,920	20	12	0.13	2,930	1,473	16.51	10	8	0.09
<b>GENDER</b>										
Female	4,369	7	4	0.09	818	475	10.87	3	2	0.05
Male	4,551	13	8	0.18	2,112	998	21.93	7	6	0.13
<b>RACE</b>										
Asian	123	0	0	0.00	16	10	8.13	0	0	0.00
Black	1,292	3	1	0.08	995	420	32.51	3	3	0.23
Hispanic	670	4	2	0.30	191	109	16.27	0	0	0.00
Indian	18	0	1	0.00	1	1	5.56	0	0	0.00
Multiracial	40	0	0	0.00	15	9	22.50	0	0	0.00
White	6,777	13	9	0.13	1,712	924	13.63	7	5	0.07
<b>TOTALS</b>	32,439	1,471	782	2.41	6,998	3,488	10.75	21	18	0.06
<b>NOT REPORTED</b> <sup>4</sup>		0	0		0	0		0	0	

<sup>1</sup> Number of suspension or expulsion actions. The number is often larger than the number of students because it includes students who receive multiple suspensions or expulsions.

<sup>2</sup> Number of individual students who have been suspended or expelled one or more times.

<sup>3</sup> Percent of students suspended or expelled of the total category population.

<sup>4</sup> Number of students involved in a disciplinary action who were reported by the district without grade-level, gender, or race information.

Florida Department of Education  
Division of Student Achievement and Articulation  
Bureau of Safety and School Support

# Discipline Data

**2001 - 2002**

LAKE	Total # Students	In-School Suspensions			Out-of-School Suspensions			Expulsions		
		# Actions <sup>1</sup>	Students Suspended <sup>2</sup>	% <sup>3</sup>	# Actions <sup>1</sup>	Students Suspended <sup>2</sup>	% <sup>3</sup>	# Actions <sup>1</sup>	Students Expelled <sup>2</sup>	% <sup>3</sup>
<b>ELEMENTARY</b>	15,937	458	303	1.90	1,191	652	4.09	1	1	0.01
<b>GENDER</b>										
Female	7,754	101	75	0.97	201	124	1.60	0	0	0.00
Male	8,183	357	228	2.79	990	528	6.45	1	1	0.01
<b>RACE</b>										
Asian	152	0	0	0.00	3	1	0.66	0	0	0.00
Black	2,546	101	74	2.91	572	288	11.31	1	1	0.04
Hispanic	1,622	106	68	4.19	82	57	3.51	0	0	0.00
Indian	36	0	1	0.00	1	1	2.78	0	0	0.00
Multiracial	199	3	2	1.01	12	9	4.52	0	0	0.00
White	11,382	248	159	1.40	521	296	2.60	0	0	0.00
<b>MIDDLE</b>	8,218	1,713	733	8.92	2,753	1,353	16.46	15	11	0.13
<b>GENDER</b>										
Female	4,113	426	216	5.25	835	443	10.77	10	8	0.19
Male	4,105	1,287	517	12.59	1,918	910	22.17	5	3	0.07
<b>RACE</b>										
Asian	87	12	5	5.75	4	2	2.30	0	0	0.00
Black	1,354	299	109	8.05	953	428	31.61	6	3	0.22
Hispanic	729	288	110	15.09	227	117	16.05	0	0	0.00
Indian	20	4	4	20.00	6	4	20.00	0	0	0.00
Multiracial	59	7	4	6.78	28	12	20.34	0	0	0.00
White	5,969	1,103	501	8.39	1,535	790	13.24	9	8	0.13
<b>HIGH</b>	9,597	73	41	0.43	2,785	1,425	14.85	16	9	0.09
<b>GENDER</b>										
Female	4,681	18	12	0.26	750	470	10.04	0	0	0.00
Male	4,916	55	29	0.59	2,035	955	19.43	16	9	0.18
<b>RACE</b>										
Asian	117	0	0	0.00	13	7	5.98	0	0	0.00
Black	1,405	13	10	0.71	983	408	29.04	0	0	0.00
Hispanic	836	12	5	0.60	241	125	14.95	1	1	0.12
Indian	26	0	5	0.00	10	5	19.23	0	0	0.00
Multiracial	63	0	0	0.00	11	8	12.70	0	0	0.00
White	7,150	48	26	0.36	1,527	872	12.20	15	8	0.11
<b>TOTALS</b>	33,752	2,244	1,077	3.19	6,729	3,430	10.16	32	21	0.06
<b>NOT REPORTED</b> <sup>4</sup>		1	1		0	0		0	0	

<sup>1</sup> Number of suspension or expulsion actions. The number is often larger than the number of students because it includes students who receive multiple suspensions or expulsions.

<sup>2</sup> Number of individual students who have been suspended or expelled one or more times.

<sup>3</sup> Percent of students suspended or expelled of the total category population.

<sup>4</sup> Number of students involved in a disciplinary action who were reported by the district without grade-level, gender, or race information.

## Discipline Data: Trends

LAKE

