

SESIR Incident Summaries

PASCO	1998 - 1999		1999 - 2000		2000 - 2001	
Time of Incidents						
	%	<i>Raw Data</i>	%	<i>Raw Data</i>	%	<i>Raw Data</i>
During School Hours	98.84	1,021	98.89	1,686	98.80	902
Not During School Hours	0.00	0	0.88	15	0.99	9
Unknown	1.16	12	0.23	4	0.22	2
Total Number of Incidents		1,033		1,705		913
Persons Involved						
	%	<i>Raw Data</i>	%	<i>Raw Data</i>	%	<i>Raw Data</i>
Students	99.81	1,031	99.65	1,699	99.78	911
Non-Students	0.00	0	0.00	0	0.22	2
Both Students and Non-Students	0.10	1	0.06	1	0.00	0
Unknown	0.10	1	0.29	5	0.00	0
Total Number of Incidents		1,033		1,705		913
Location of Incidents						
	%	<i>Raw Data</i>	%	<i>Raw Data</i>	%	<i>Raw Data</i>
School Grounds	95.35	985	86.98	1,483	95.95	876
School Sponsored Activity	1.16	12	0.23	4	1.20	11
School Sponsored Transportation	3.48	36	12.79	218	2.85	26
Total Number of Incidents		1,033		1,705		913
Number of Schools Reporting No SESIR Incidents						
	%	<i>Raw Data</i>	%	<i>Raw Data</i>	%	<i>Raw Data</i>
Elementary ²	82.76	24	86.67	26	87.88	29
Middle ³	12.50	1	0.00	0	20.00	2
High ⁴	0.00	0	0.00	0	12.50	1
Combination ⁵	0.00	0	0.00	0	0.00	0
Charter	0.00	0	0.00	0	100.00	2
Total Number of Schools		25		26		34

¹ Some schools may have had no SESIR incidents occur.

² Elementary includes Pre-Kindergarten through Grade Five for 1998-1999 and 1999-2000. Elementary includes Kindergarten through Grade Five for 2000-2001.

³ Middle includes Grades Six through Eight for 1998-1999, 1999-2000, and 2000-2001.

⁴ High includes Grades Nine through Twelve for 1998-1999, 1999-2000, and 2000-2001.

⁵ Includes schools which combine elementary, middle, or high groupings or overlap grade levels, e.g., K-6, 6-12, or K-12.

Please note that SESIR incidents are reported by schools by incident, not by individual student.

Florida Department of Education
 Division of Public Schools and Community Education
 Bureau of Equity, Safety and School Support

SESIR Totals

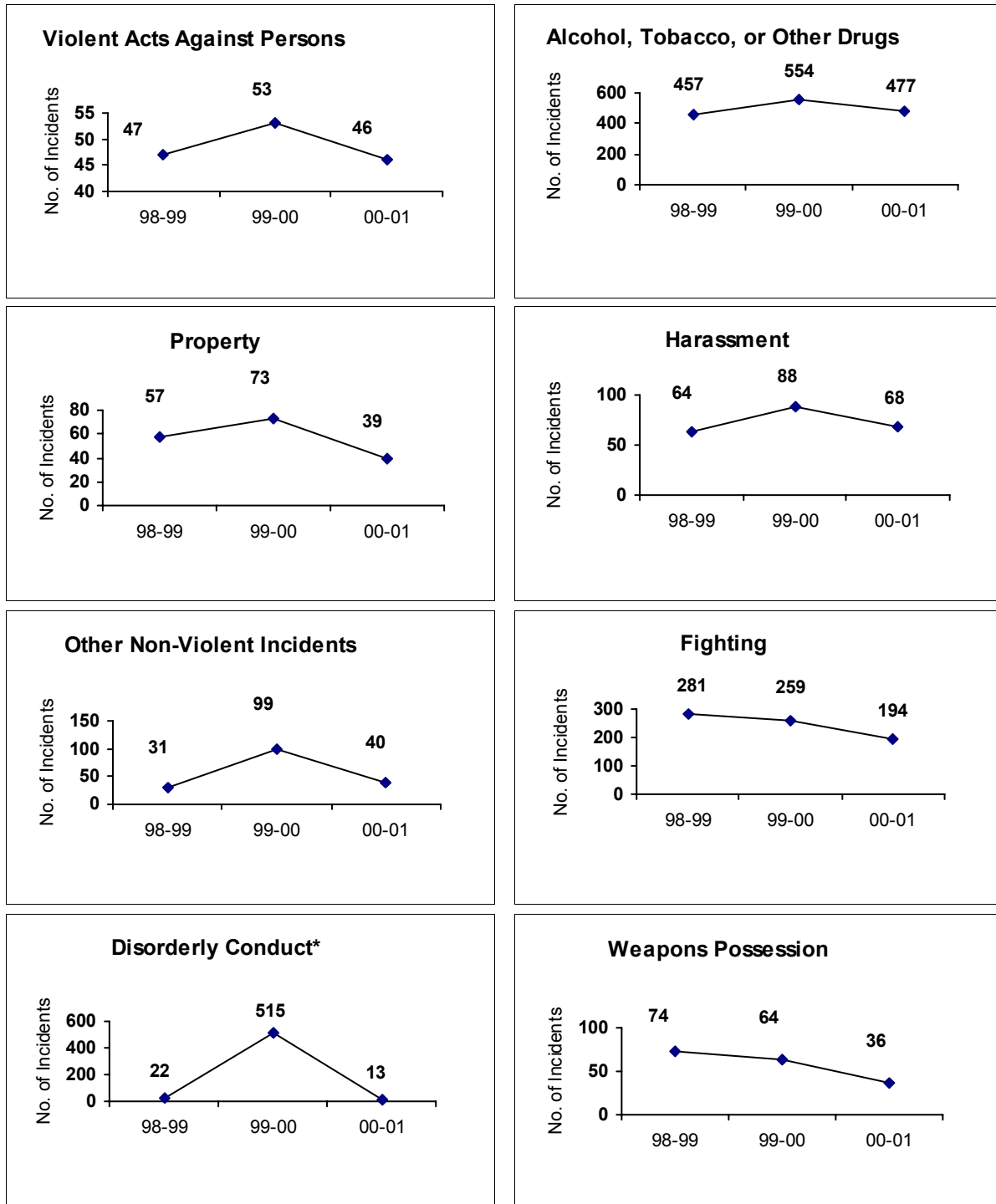
PASCO	1998 - 1999		1999 - 2000		2000 - 2001	
Student Population:	50,904		52,701		52,931	
	<i>Per 1,000</i>	<i>Raw Data</i>	<i>Per 1,000</i>	<i>Raw Data</i>	<i>Per 1,000</i>	<i>Raw Data</i>
Violent Acts Against Persons	0.92	47	1.01	53	0.87	46
Homicide	0.00	0	0.00	0	0.00	0
Sexual Battery	0.02	1	0.02	1	0.00	0
Robbery	0.00	0	0.00	0	0.04	2
Battery	0.90	46	0.99	52	0.83	44
Kidnapping	0.00	0	0.00	0	0.00	0
Alcohol, Tobacco, or Other Drugs	8.98	457	10.51	554	9.01	477
Drugs	1.89	96	2.22	117	2.32	123
Alcohol	0.39	20	0.34	18	0.34	18
Tobacco	6.70	341	7.95	419	6.35	336
Property	1.12	57	1.39	73	0.74	39
Breaking/Entering	0.08	4	0.06	3	0.08	4
Larceny/Theft	0.77	39	1.06	56	0.47	25
Motor Vehicle Theft	0.00	0	0.00	0	0.06	3
Arson	0.08	4	0.06	3	0.04	2
Vandalism	0.20	10	0.21	11	0.09	5
Harassment	1.26	64	1.67	88	1.28	68
Threat/Intimidation	1.04	53	1.31	69	0.94	50
Sexual Harassment	0.22	11	0.36	19	0.34	18
Other Non-Violent Incidents	0.61	31	1.88	99	0.76	40
Sexual Offense	0.18	9	0.42	22	0.17	9
Trespassing	0.04	2	0.00	0	0.34	18
Other Major	0.39	20	1.46	77	0.25	13
Fighting	5.52	281	4.91	259	3.67	194
Disorderly Conduct	0.43	22	9.77	515	0.25	13*
Weapons Possession	1.45	74	1.21	64	0.68	36
TOTAL	20.29	1,033	32.35	1,705	17.25	913

Note: SESIR data for 1998-1999 as of December 1999; for 1999-2000 as of November 2000; and for 2000-2001 as of November 2001. Population data from survey 5 for 1998-1999 as of February 2000; for 1999-2000 as of March 2001; and for 2000-2001 as of November 2001.

* This substantial decrease may be due to clarification of types of actions that should be reported in this category. Schools had been reporting minor disorderly conduct in classrooms when they should have been reporting serious campus disruptions such as bomb threats.

SESIR Totals: Trends By Categories

PASCO



* This substantial decrease may be due to clarification of types of actions that should be reported in this category. Schools had been reporting minor disorderly conduct in classrooms when they should have been reporting serious campus disruptions such as bomb threats.

Please note graph trends should not be compared because each graph reflects a different Y-Axis scale.

Discipline Data

PASCO

Discipline Actions by Grade Level

1998-1999

Grade Level	Total Population	In-School Suspension	Out-of-School Suspension	Expulsion
Elementary	26,351	469	733	6
Middle	12,174	8,255	2,969	16
High	13,823	8,430	3,032	19

1999-2000

Grade Level	Total Population	In-School Suspension	Out-of-School Suspension	Expulsion
Elementary	23,341	365	540	20
Middle	11,040	8,410	3,073	30
High	13,312	9,351	3,287	11

2000-2001

Grade Level	Total Population	In-School Suspension	Out-of-School Suspension	Expulsion
Elementary	25,710	499	849	9
Middle	12,800	9,547	3,621	14
High	14,421	10,201	3,063	24

Discipline Actions per 1,000 Students by Grade Level

1998-1999

Grade Level	Total Population	In-School Suspension	Out-of-School Suspension	Expulsion
Elementary	26,351	17.80	27.82	0.23
Middle	12,174	678.08	243.88	1.31
High	13,823	609.85	219.34	1.37

1999-2000

Grade Level	Total Population	In-School Suspension	Out-of-School Suspension	Expulsion
Elementary	23,341	15.64	23.14	0.86
Middle	11,040	761.78	278.35	2.72
High	13,312	702.45	246.92	0.83

2000-2001

Grade Level	Total Population	In-School Suspension	Out-of-School Suspension	Expulsion
Elementary	25,710	19.41	33.02	0.35
Middle	12,800	745.86	282.89	1.09
High	14,421	707.37	212.40	1.66

Note: The number of suspension or expulsion actions is often larger than the number of students because it includes students who receive multiple suspensions or expulsions.

Survey 5 discipline data for 1998-1999 as of February 2000; for 1999-2000 as of November 2000; and for 2000-2001 as of November 2001.

Florida Department of Education
Division of Public Schools and Community Education
Bureau of Equity, Safety and School Support

Discipline Data

2000 - 2001

PASCO	Total # Students	In-School Suspensions			Out-of-School Suspensions			Expulsions		
		# Actions ¹	Students Suspended ²	% ³	# Actions ¹	Students Suspended ²	% ³	# Actions ¹	Students Expelled ²	% ³
ELEMENTARY	25,710	499	344	1.34	849	544	2.12	9	9	0.04
GENDER										
Female	12,507	59	48	0.38	115	81	0.65	0	0	0.00
Male	13,203	440	296	2.24	734	463	3.51	9	9	0.07
RACE										
Asian	251	0	0	0.00	4	3	1.20	0	0	0.00
Black	944	31	22	2.33	103	57	6.04	0	0	0.00
Hispanic	2,032	42	20	0.98	57	36	1.77	0	0	0.00
Indian	76	0	1	0.00	2	1	1.32	0	0	0.00
Multiracial	568	13	10	1.76	19	12	2.11	0	0	0.00
White	21,839	413	292	1.34	664	435	1.99	9	9	0.04
MIDDLE	12,800	9,547	3,292	25.72	3,621	1,551	12.12	14	13	0.10
GENDER										
Female	6,189	2,537	1,044	16.87	885	422	6.82	1	1	0.02
Male	6,611	7,010	2,248	34.00	2,736	1,129	17.08	13	12	0.18
RACE										
Asian	167	12	10	5.99	5	4	2.40	0	0	0.00
Black	441	664	197	44.67	263	103	23.36	1	1	0.23
Hispanic	903	725	259	28.68	275	134	14.84	1	1	0.11
Indian	35	39	5	31.43	19	5	14.29	0	0	0.00
Multiracial	107	119	27	25.23	43	19	17.76	0	0	0.00
White	11,147	7,988	2,788	25.01	3,016	1,286	11.54	12	11	0.10
HIGH	14,421	10,201	3,677	25.50	3,063	1,562	10.83	24	20	0.14
GENDER										
Female	7,071	3,121	1,293	18.29	758	439	6.21	3	3	0.04
Male	7,350	7,080	2,384	32.44	2,305	1,123	15.28	21	17	0.23
RACE										
Asian	189	56	24	12.70	17	9	4.76	1	1	0.53
Black	509	568	190	37.33	168	88	17.29	5	3	0.59
Hispanic	965	738	260	26.94	200	108	11.19	0	0	0.00
Indian	42	23	4	28.57	6	4	9.52	0	0	0.00
Multiracial	93	86	34	36.56	20	12	12.90	0	0	0.00
White	12,623	8,730	3,157	25.01	2,652	1,341	10.62	18	16	0.13
TOTALS	52,931	20,247	7,313	13.82	7,533	3,657	6.91	47	42	0.08
NOT REPORTED ⁴		0	0		0	0		0	0	

¹ Number of suspension or expulsion actions. The number is often larger than the number of students because it includes students who receive multiple suspensions or expulsions.

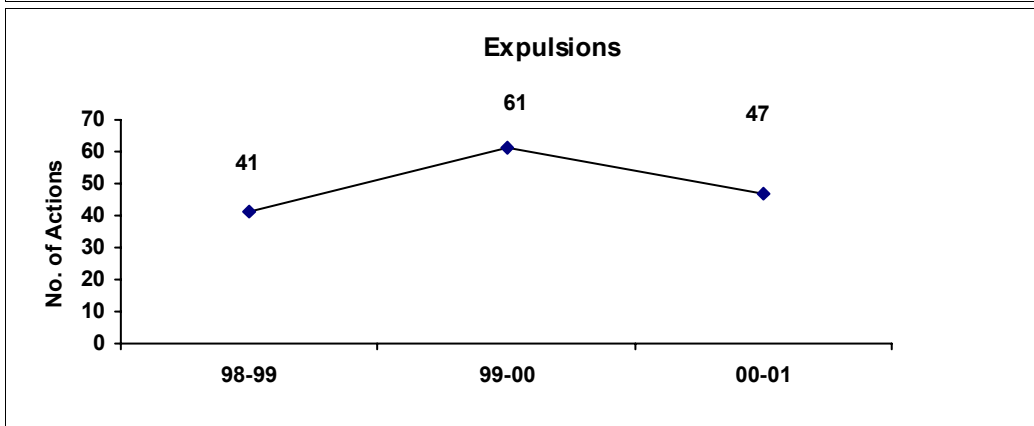
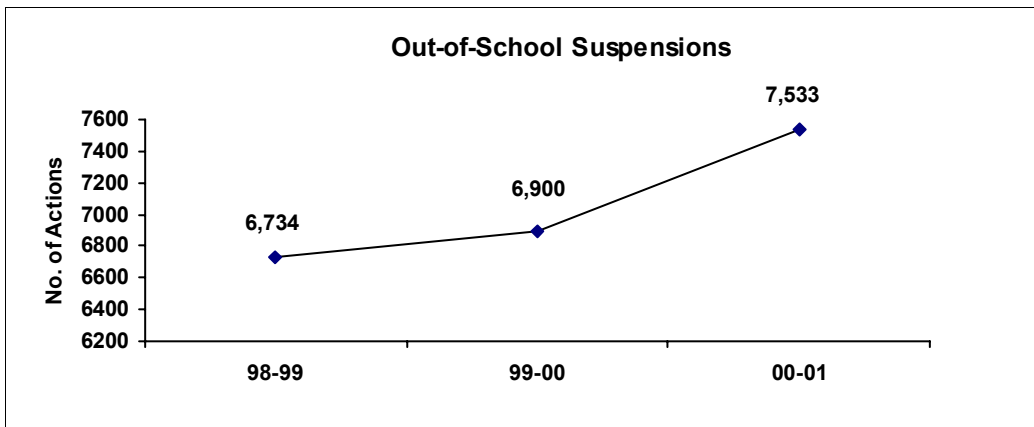
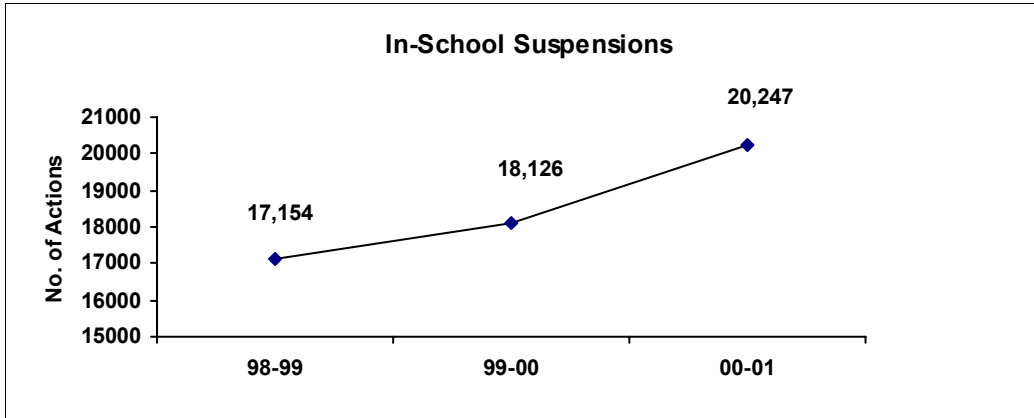
² Number of individual students who have been suspended or expelled one or more times.

³ Percent of students suspended or expelled of the total category population.

⁴ Number of students involved in a disciplinary action who were reported by the district without grade-level, gender, or race information.

Discipline Data: Trends

PASCO



Note: Graph trends should not be compared because each graph reflects a different Y-Axis scale.