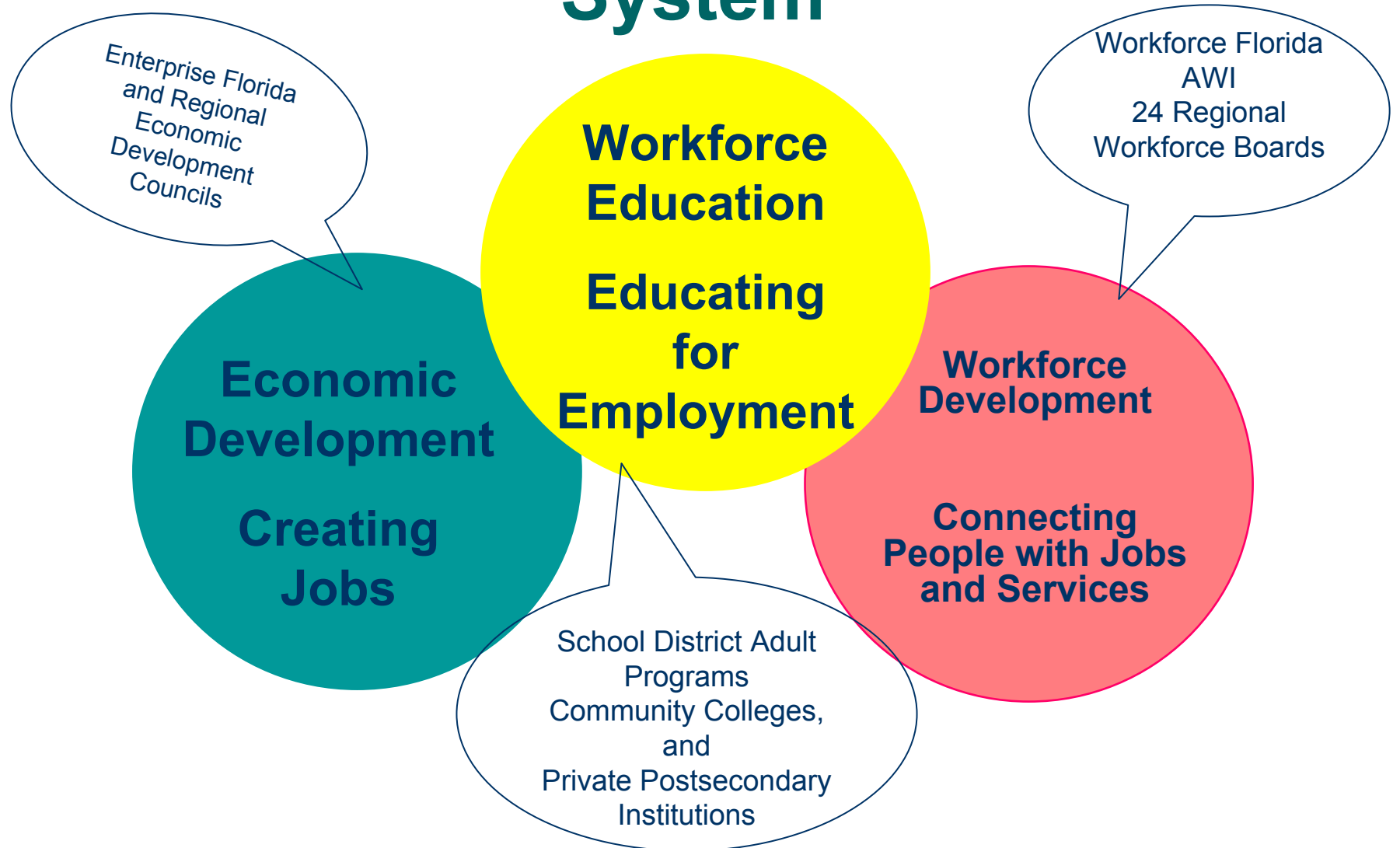


**Workforce Education
House K-20 Education Committee
February 16, 2004
Dr. Bonnie Marmor
Vice Chancellor**



Florida's Workforce Development System



Workforce Education

- Prepares a Skilled Workforce
- Focus on Occupations That Require Less than a Bachelor's Degree
- Develops Basic Skills in Adults
- Investment in These Programs Contributes to:
 - Self-Sufficiency for Individuals--Increased Achievement of Their Children
 - Economic Development
 - Diversification of Florida's Economy

Presentation Includes Information About

- ✓ Demand
- ✓ Programs
- ✓ Delivery Systems
- ✓ Enrollments and Achievements
- ✓ Funding
- ✓ Career Guidance and Counseling

Demand



Florida's Annual Job Growth

Ranked Number 1 in the Nation in the Number of New Jobs
and Tied for Number 1 in Percent Change relative to the other
Populous States

	<u>December 2003 (Over-the-year)</u>	
	In Numbers	In Percent Change
United States	-53,000	**
Florida	1 14,600	1.6%
Georgia	64,000	1.6%
Texas	43,900	0.5%
New Jersey	37,100	0.9%
New York	-7,900	-0.1%

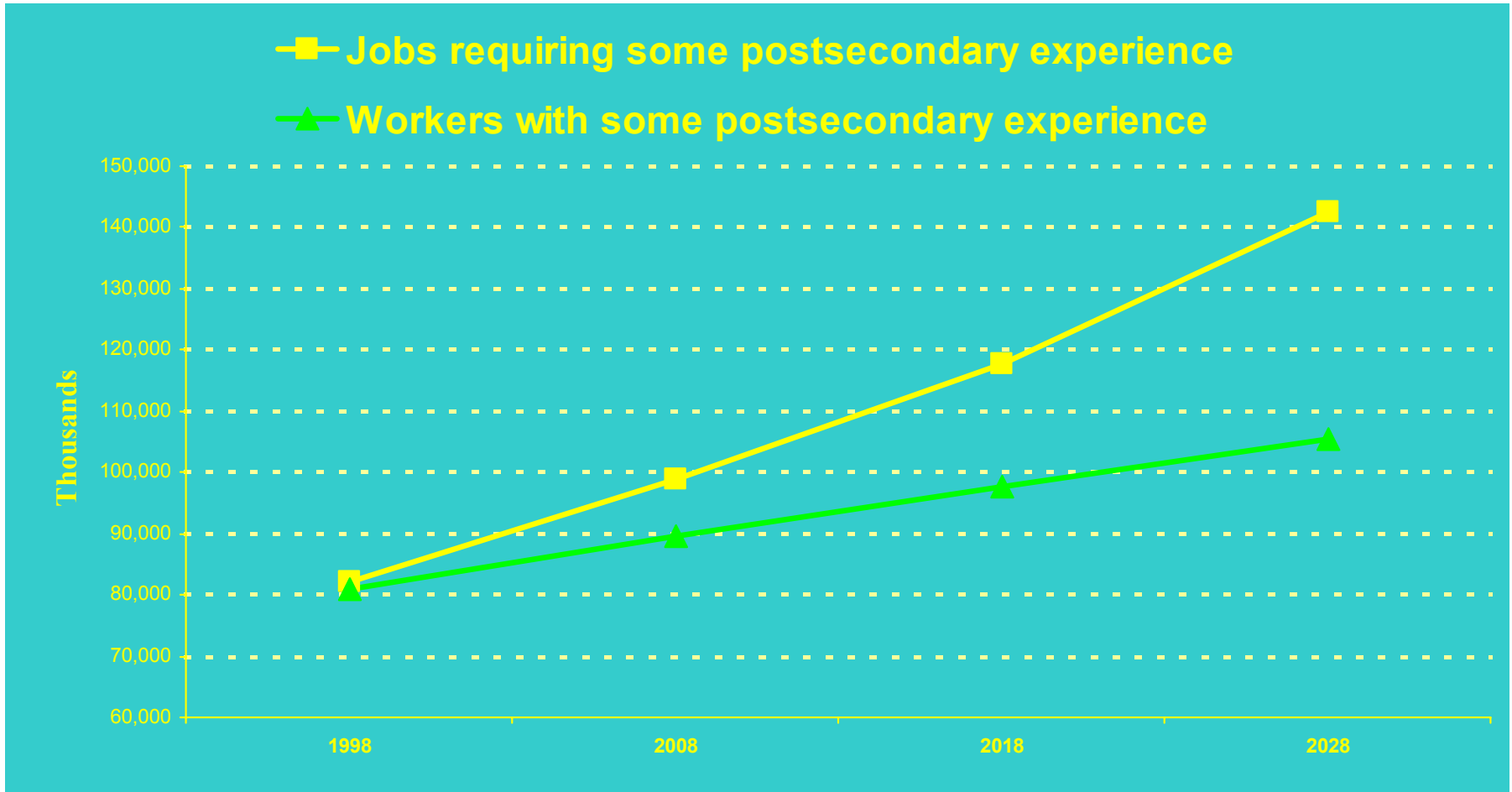
** = Less than 0.05 percent

Source: Florida Agency for Workforce Innovation, Labor Market Statistics in cooperation with the U.S. Department of Labor, Bureau of Labor Statistics.

Florida Occupations Growing the Fastest

Occupation	Employment 2011	Annual Growth	Education Attainment
Network and Computer Systems Administrators	16,627	5.58	Voc. Cert. +
Network Systems and Data Communications Analysts	16,217	5.51	Associate +
Computer Software Engineers, Applications	24,407	5.50	Associate +
Social and Human Service Assistants	16,361	5.10	HS
Medical Assistants	44,011	5.06	HS
Medical Records and Health Information Technicians	16,068	4.88	Associate +
Computer Software Engineers, Systems Software	14,781	4.77	Bachelors +
Home Health Aides	37,347	4.26	Voc. Cert. +
Computer Support Specialists	38,038	4.23	Associate +
Personal and Home Care Aides	17,181	4.21	<HS

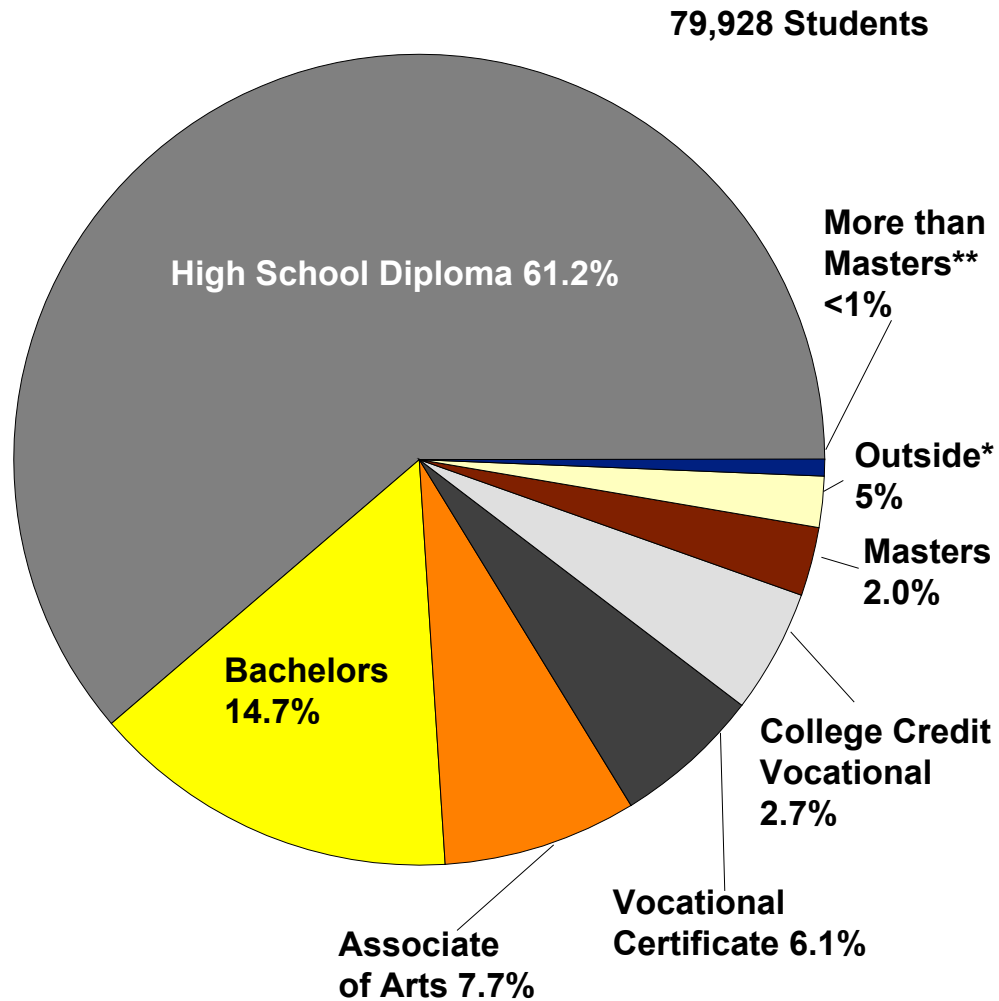
Projected Growth in Supply and Demand of Workers With Some Postsecondary Education, 1998 to 2028



Source: Bureau of Labor Statistics, U.S. Census Bureau and National Alliance of Business

1990-1991 Florida High School Graduates Highest Educational Attainment Level in 2000-2001

• 10 years after graduating from a public Florida high school, most of those who acquired a high school diploma in 1991 had not earned a higher-level education credential.

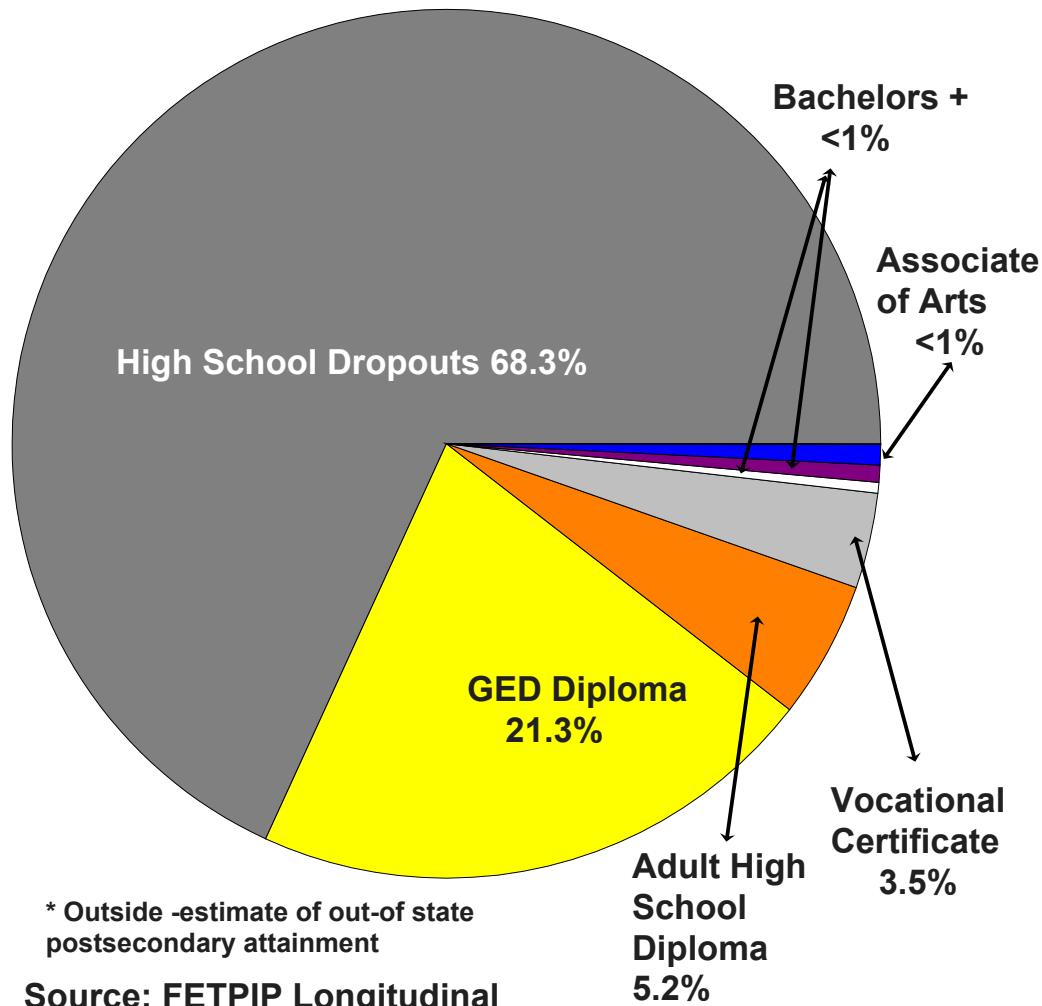


*Estimate of out-of-state Postsecondary attainment at any level.

** Any type of degree or specialization past masters...

1991 Florida High School Dropouts Highest Educational Attainment Level in 2000-2001

13,748 Students



Programs



Workforce Education Programs

- ✓ Career and Technical Education—Employment Training and Retraining
- ✓ Adult General Education—Basic Skills



Career and Technical Education Programs

- ✓ **Technical Certificates**
 - Licensed Practical Nurses, EMTs/Fire Fighters, Law Enforcement Officers, Computer Support Specialists
 - Apprenticeship - 300+ Registered Programs
- ✓ **Associate Degree (2-year degree)**
 - Registered Nurses, Dental Hygienists, Network Services Technicians, Engineering Technicians
- ✓ **Continuing Workforce Education**
 - Short-term Courses to Upgrade Skills of the Current Workforce

Career Ladder/Articulation

- ✓ Programs Build on Each Other To Lead to Higher-Level Jobs
- ✓ An Example of a Career Ladder:
 - Nursing Assistant (Certificate)
 - Licensed Practical Nurse (LPN Certificate)
 - Registered Nurse (Associate Degree, ADN)
 - Registered Nurse (Bachelor's Degree, BSN)

Highest Enrollment Occupational Clusters Technical Centers

1.	Nursing/Health	14,192
2.	Construction	14,128
3.	Child Care	11,457
4.	Computer/Info Tech	6,823
5.	Automotive	6,269
6.	Business	5,588
7.	Public Service	4,545
8.	Hospitality	2,243



Highest Enrollment Occupational Clusters Community Colleges

1.	Nursing/Health	29,361
2.	Computer/Info Tech	19,216
3.	Business	19,180
4.	Public Service	9,643
5.	Construction	8,844
6.	Child Care	7,506
7.	Medical Equipment/Lab	2,323
8.	Hospitality	2,309

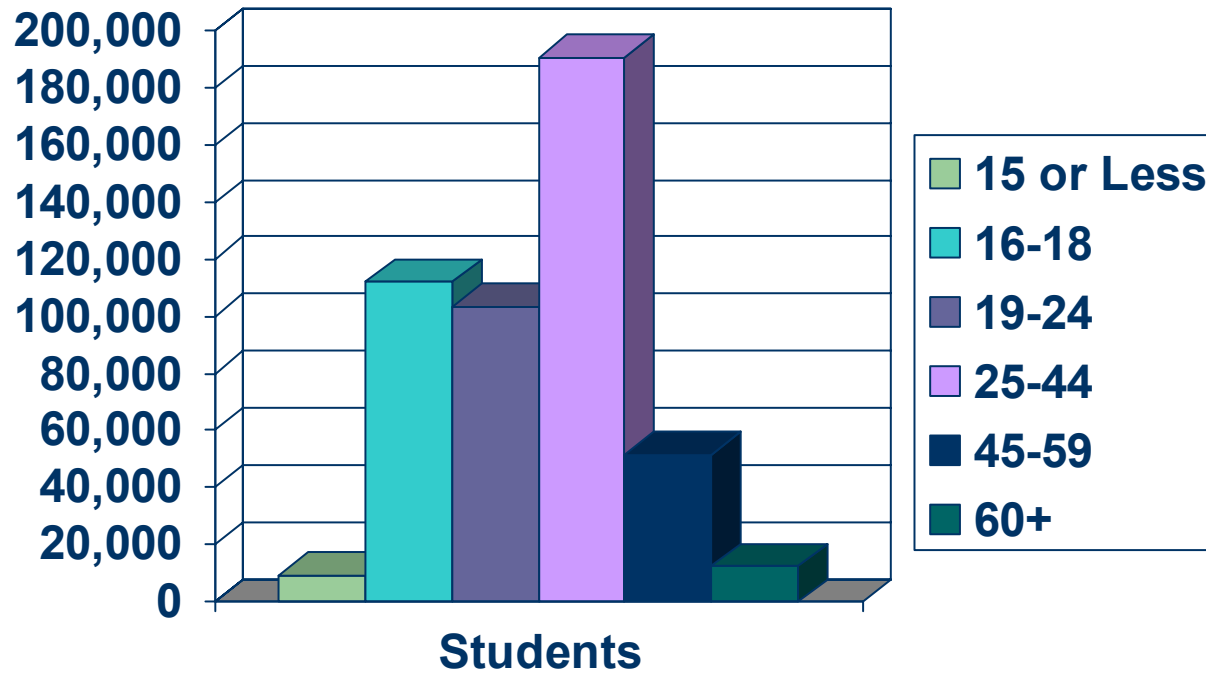


Adult General Education

- ✓ Adult Literacy (Grade Levels 0-8)
 - Reading, Writing, Mathematics
 - Compute and Solve Problems
- ✓ Obtaining a High School Diploma
 - Preparing for the General Educational Development Test (GED) or
 - Attending Adult High School Classes
- ✓ English as a Second Language

Who Are Adult Ed Students?

Age Distribution for
School District Adult Ed Students



Delivery Systems



Workforce Education Program Enrollments for 2002-2003

Programs	Community College Program Enrollments	School District Program Enrollments	Total Students
College Credit/Degree	90,494	N/A	90,494
Technical Certificate	29,685	82,165	111,850
Adult General Education	71,481	447,561	519,042
Continuing Workforce Education	183,243	69,774	253,017
TOTAL	374,903	599,500	974,403

Student Achievement in 2002-2003

- ✓ 9,831 Associate in Science Degrees Awarded
- ✓ 6,041 College-Credit Certificates Awarded
- ✓ 26,958 Technical Certificates Awarded
- ✓ 53,415 Students Earned at Least One Occupational Completion Point from Certificate Programs
- ✓ 40,126 Students Earned a High School Diploma

Funding



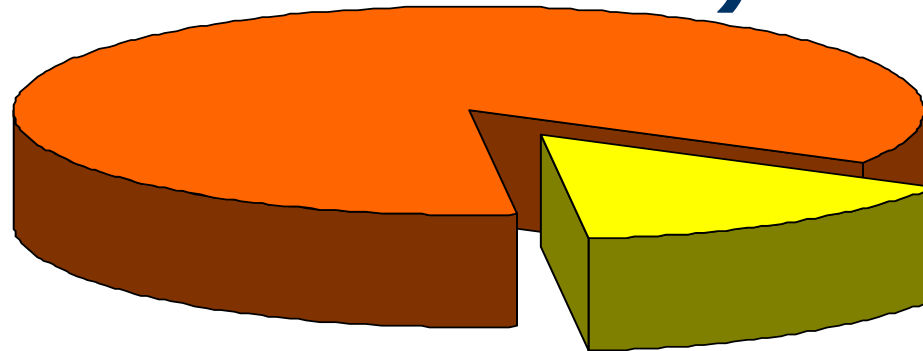
Accountability

“Florida leads the nation in tying workforce education funding to performance.”

OPPAGA, November 2001

Workforce Development Formula Section 1011.80, F.S.

**BASE AMOUNT = 85% of Prior Year
Appropriation (Except Continuing
Workforce Ed)**



PERFORMANCE AMOUNT =
Completion Points + Placement Points

Performance Based Funding Model

- ✓ Points Assigned to Completers & Placements
- ✓ Higher Points Awarded for:
 - Placement in High Wage/High Skill Jobs
 - Targeted Populations
- ✓ Results Since 1997-98
 - Higher Completion & Placement Rates
 - More Targeted Students Served
 - More Programs Focusing on High Skill/High Wage Jobs

Lessons Learned From Performance Funding

- ✓ Increased retention & completion
- ✓ Increased placement in targeted occupations
- ✓ Influenced the focus on certain targeted populations
- ✓ Increased the evaluation of programs
- ✓ Raised the level of attention to reporting
- ✓ Improved data structure & reporting requirements

Career Guidance and Counseling



Informed Career Decision Making


- Research suggests that students who have engaged in career planning activities:
 - Take a more direct path & reach goals sooner
 - Take responsibility for their future
 - Are better prepared to adapt to change

What We Are Providing

- Provide career exploration and planning resources through the Career Resource Network
 - Florida Choices (www.florida.echoices.com)
 - Career Cruiser
 - Parent Primer
 - FACTS.org
- Mini-grants awarded to 27 school districts to develop or update their district counseling and guidance plans
- Staff development to school districts, community colleges, and other agencies such as One-Stop Centers

Workforce Education:

- Drives Florida's economic engine
- Educates Florida's students for today's highly skilled workplace
- Retrains Florida's workforce for tomorrow's employment needs



Workforce Education is critical to Florida's economic development as well as to the personal growth and career development of the people it serves