



Florida House of Representatives  
**Subcommittee on Education  
Appropriations**

February 11, 2004

**Office of Independent Education and Parental Choice**

Theresa A. Klebach, Ph.D.  
*Executive Director*

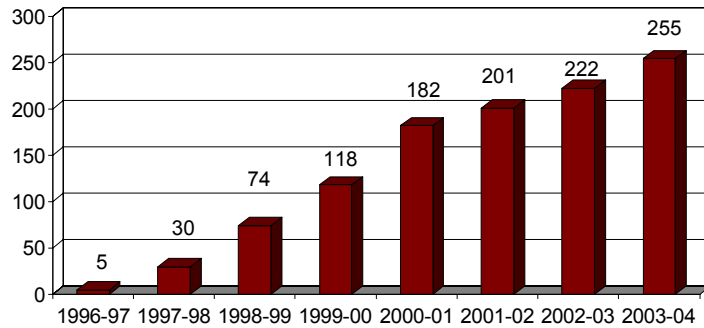


## **What is a Charter School?**

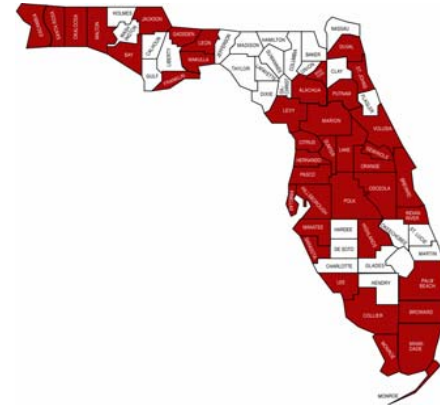
- Charter Schools are “Public Schools”
- Charter School Guiding Principles
- Purpose of Charter Schools



### Growth in Florida Charter Schools

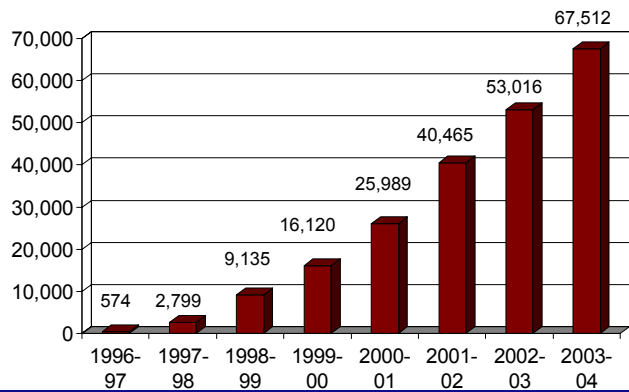


### School Districts with Charter Schools

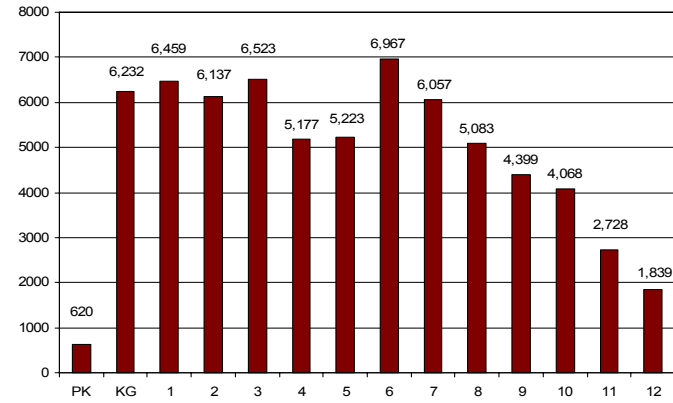




### Students in Florida Charter Schools



### Students by Grade Level



SOURCE: Florida Department of Education, Education Information and Accountability Services, Survey 2, October 2003



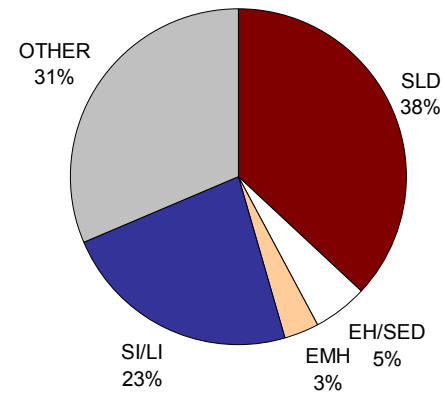
### Student Racial/Ethnic Composition

- White 45%
- Black 25%
- Hispanic 25%
- Asian/Pacific 2%
- Multiracial 3%

SOURCE: Florida Department of Education, Education Information and Accountability Services, Survey 2, October 2003



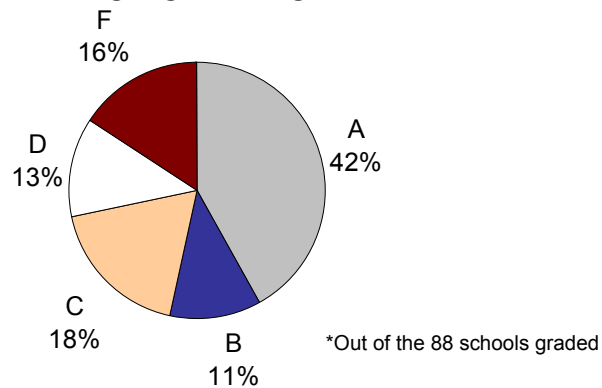
### ESE Students Served in Charter Schools



SOURCE: Florida Department of Education, Education Information and Accountability Services, Survey 2, October 2003



### Majority of Charter Schools Perform Well\*



SOURCE: Florida Department of Education, Education Information and Accountability Services, Survey 2, October 2003

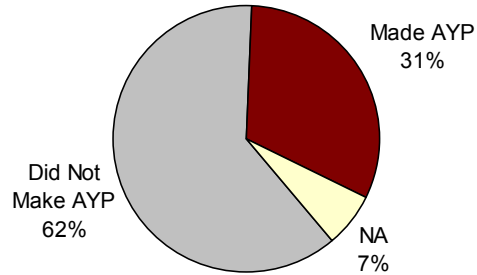


### Assistance to “F” Charter Schools

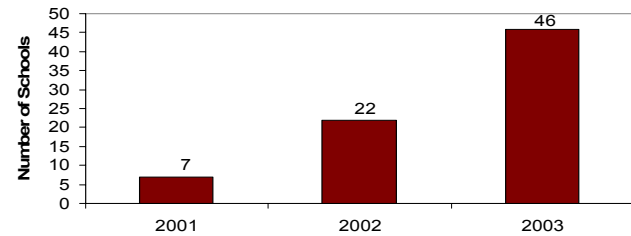
- A+ Assistance Plus Plans
- Continuous Improvement Model
- Reading Coaches
- Technical Assistance
- On Site Visits
- Teacher Training
- Regular Conference Calls with Superintendents and Directors



### Percentage of Charter Schools Making AYP



### Charter Schools Earning School Recognition Awards





## Parents Grade Charter Schools “A” or Higher

Of the charter school parents surveyed in 2003:

- 69.1% graded their child’s school an “A+” or “A.”
- 21% graded their child’s school a B.
- 6.6% graded their child’s school as average.
- 3.3% graded their child’s school below average.

SOURCE: Lou Solomon, "How Florida Parents Grade Their Charter Schools," November 19, 2003



## Charter School Funding

- FEFP Funding
- Capital Outlay
- Federal Start Up



## **Challenges Facing Charter Schools**

- Auditor General Findings Associated with Independent Financial Audits
- Class Size Requirements
- Capital Outlay
- School and Student Performance



## **Looking Ahead . . .**

- Variety of New “Types” of Charter Schools
- “Meaningful” Annual Report to the Governor, Legislature and SBE
- Expanding & Modeling Innovative Strategies
- Statutory Requirement for Review of Charter School Policy by 2005 Legislature



## Department of Education

Office of Independent Education and  
Parental Choice

(850) 245-0502 Main Phone Line  
(800) 447-1636 Toll-Free Hotline

**Theresa A. Klebacha, Ph.D.**  
*Executive Director*