

**Projected Florida High School Graduates
2006-07 through 2020-21**

January 2007

Office of Evaluation and Reporting
Florida Department of Education

(850) 245-0411 Suncom 205-0411

For more information, contact:
Office of Evaluation and Reporting
Martha.Miller@fldoe.org

Projected Florida Public High School Graduates 2006-07 through 2020-21

The Department of Education periodically provides projections of Florida public high school graduates for use in long-range planning. This report updates projections that were released in March 2006.

Because this series is often used in the context of projecting enrollments in Florida community colleges and state universities and the number of Bright Futures scholarship awards, the projections focus on the number of graduates receiving standard diplomas--the type of diploma accepted by most colleges and universities. The number of standard diploma graduates in 2005-06 totaled 129,943. This number is 2.6 percent higher than the prior year (126,648) and 818 (0.6 percent) lower than projected (130,761).

Shifts in Grades 9-12

The distribution of students across grades 9-12 has affected projections of high school graduates over the last six years. These trends can be seen clearly in the changing grade progression ratios (GPRs) for these grades. A GPR is defined as the ratio between the number of students in a given grade one year and the number in the prior grade the prior year. Table 1 shows the grade progression ratios for grades 9-12 for 1993-94 through 2005-06.

From 1977 to 1995 grade 9 had a GPR that hovered between 1.10 and 1.13, the largest GPR of all the grades. The main reason for this atypically high GPR is the large number of students from K-8 nonpublic schools who transfer each year to public schools. The sharp increase in GPRs from 1.16 in 1996-97 to 1.30 in 2001-02, appears to be a result of the large number of nonpromotions from 9th to 10th grade. (See page 2.) The 9th grade GPR has moderated over the last three years, but fluctuations in the numbers of students classified as 9th graders continue to affect the number of graduates three and four years later.

At the same time the GPRs for the 11th and 12th grades were also at an all-time high and they remain at a higher level than in the past.

Table 1
Grade Progression Ratios* - Grades 9-12

Years	G R A D E S			
	9th	10th	11th	12th
1993-94	1.13	0.90	0.86	0.87
1996-97	1.16	0.88	0.83	0.85
1999-00	1.22	0.80	0.82	0.87
2000-01	1.29	0.76	0.85	0.88
2001-02	1.30	0.73	0.89	0.91
2002-03	1.24	0.76	0.92	0.92
2003-04	1.22	0.79	0.90	0.91
2004-05	1.18	0.82	0.93	0.91
2005-06	1.13	0.86	0.91	0.89

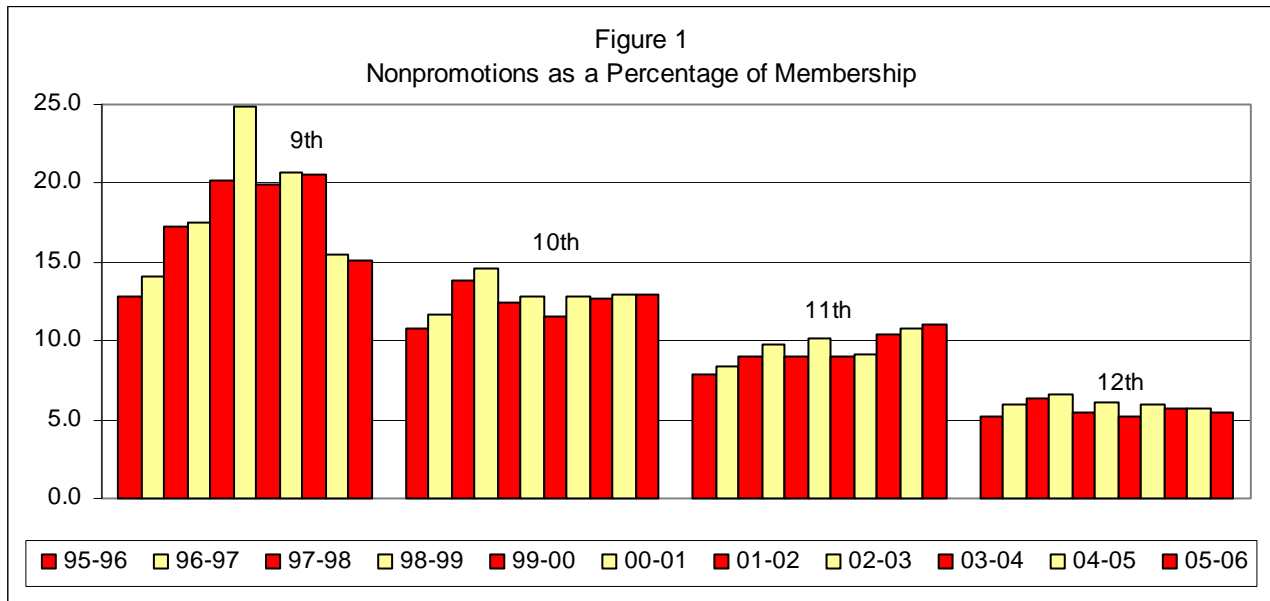
*The ratio of the number of FTEs in a grade one year and the number in the prior grade the prior year. Ratios greater than one at the 9th grade level indicate that there were more 9th grades than there were 8th graders the prior year.

Nonpromotions

Supporting this close connection between the increase in 9th grade GPRs and nonpromotion trends is the similarity in the two trends. Table 2 and Figure 1 show the nonpromotions as a percentage of membership for grades 9-12. The nonpromotion rate in all four grades increased significantly from 1995-96 through 2000-01. The largest increases occurred in grade 9, where one quarter of the students were not promoted at the end of the 2000-01 school year. As is true for 9th grade GPRs, nonpromotion rates have moderated over the last two years. However, the rates for 10th and 11th grade remain higher than they were prior to 1998-99.

Years	G R A D E S			
	9th	10th	11th	12th
1990-91	8.4	8.5	6.3	5.3
1993-94	10.8	9.5	7.9	5.5
1996-97	14.1	11.7	8.4	6.0
1999-00	20.2	12.4	9.0	5.4
2000-01	24.9	12.9	10.1	6.1
2001-02	20.0	11.5	9.1	5.2
2002-03	20.7	12.8	9.1	5.9
2003-04	20.6	12.7	10.4	5.7
2004-05	15.4	12.9	10.7	5.7
2005-06	15.1	12.9	11.0	5.5

*Based, for example, on the number of students in 2000-01 not promoted on to the next grade in fall 2001.



High School Completers

High school completers may receive one of four types of credentials: a standard diploma, a special diploma, a standard certificate of completion, or a special certificate of completion. As shown in Table 3, the percentage of students receiving standard diplomas is decreasing. In 1982-83, 97 percent of the high school completers received a standard diploma. By 1998-99, the number dropped to 94 percent. In 2005-06 standard diploma graduates represented 89 percent of all completers. (See also Table 8 and Figures 4 and 5).

Reasons for the increased in the percentage of nonstandard diplomas

Table 3
Number of Graduates*

Year	All Graduates & Cert.	Standard Diploma Graduates	Percentage Standard Diplomas
1982-83	87,819	85,505	97.4
1986-87	84,402	82,184	97.4
1990-91	89,512	87,647	97.9
1994-95	93,299	90,062	96.5
1998-99	105,675	98,892	93.6
1999-00	110,615	102,835	93.0
2000-01	115,762	106,374	91.9
2001-02	125,050	113,813	91.0
2002-03	133,293	120,847	90.7
2003-04	138,917	124,992	90.0
2004-05	141,726	126,648	89.4
2005-06	146,147	129,943	88.9

* From 1989-90 on includes university-based research schools.
Does not include Florida School for the Deaf and the Blind.

awarded may include (1) higher standards for students receiving standard diplomas, (2) decreases in the dropout rate, and (3) recent federal requirements that students with handicapping conditions who have not yet completed high school be provided educational services through age 21. Both of the latter factors could result in students completing high school who would have dropped out in the past.

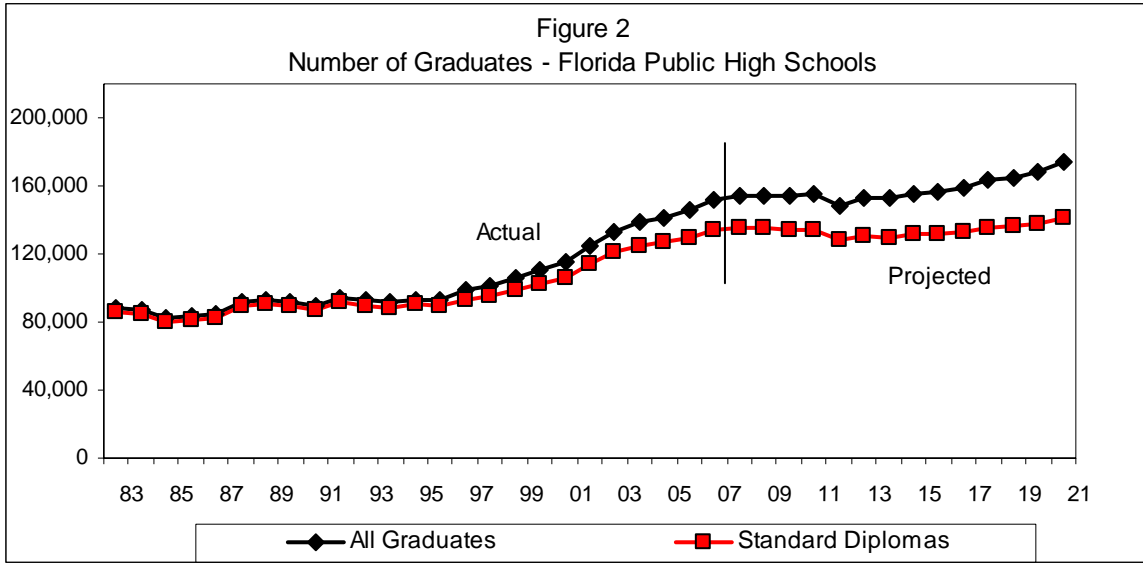
As shown in Table 4, the total number of completers (graduates plus those receiving special diplomas or certificates of completion) is projected to increase from 146,147 in 2005-06 to 151,919 in 2006-07, 154,800 in 2010-11, and 173,984 in 2020-21. Based on trends over the last few years, the projections assume a gradual decrease in the proportion of students receiving standard diplomas, with the percentage projected to drop to 86.4 percent by 2010-11 and 81.4 percent by 2020-21. (See Figure 2.)

Table 4
Number of Graduates - Florida Public High Schools*

Year	All Graduates & Cert.	Standard Diploma Graduates	Percentage Standard Diplomas
ACTUAL			
2004-05	141,726	126,648	89.4
2005-06	146,147	129,943	88.9
PROJECTED			
2006-07	151,919	134,307	88.4
2007-08	154,416	135,743	87.9
2008-09	154,516	135,060	87.4
2009-10	154,619	134,379	86.9
2010-11	154,800	133,764	86.4
2011-12	148,718	127,766	85.9
2012-13	152,615	130,352	85.4
2013-14	152,832	129,775	84.9
2014-15	155,611	131,357	84.4
2015-16	157,000	131,753	83.9
2016-17	159,190	132,797	83.4
2017-18	163,048	135,200	82.9
2018-19	165,288	136,231	82.4
2019-20	168,648	138,158	81.9
2020-21	173,984	141,659	81.4

The number of standard-diploma graduates, which totaled 129,943 in 2005-06, is projected to reach 134,307 in 2006-07, 133,764 in 2010-11, and 141,659 in 2020-21. This represents an increase of 11 percent between 2005-06 and 2010-11 and another 16 percent between 2010-11 and 2020-21.

Statewide trends through 2020-21 are shown on Table 5 and Figure 3. These projections are significantly lower than last year's, mainly because of the lower than expected K-12 enrollment in fall 2006. Instead of a projected statewide growth of nearly two percent, enrollments in fall 2006 were virtually the same as 2005-06. It will likely take one or two



years for the smaller numbers of cohorts to be reflected in the number of high school graduates but, unless the state experiences an unexpected increase in enrollments, trends in the number of standard diploma graduates are projected to be level from 2008-09 through 2010-11, partly a reflection of a decrease in the number of births in 1995 and 1996, coupled with the projected slight annual decrease in the percentage of completers who receive standard diplomas. The expected 5-percent drop in 2011-12, followed by a 2-percent increase anticipated the next year, are the long-term effects of the significant increase in the number of third-grade retentions in 2003-04 that, in turn, resulted in an atypically small 4th grade. Annual increases of approximately one to two percent can be expected the last five years of the decade.

Table 6 gives the actual number of graduates by school district through 2005-06, followed by projected graduates by school district through 2014-15 in Table 7. The projections are based on (1) projected 12th grade regular-term FTE (full-time equivalent) enrollments by district and (2) district-specific patterns in the relationship between FTEs and the number of standard diploma graduates. Overall, the number of graduates in 2014-15 will only about one percent higher than in 2005-06. More than half of the districts will have even fewer graduates than in 2005-06. The largest increases in the number of graduates are projected for Lee, Flagler, Pasco, Clay Osceola, Polk, and Lake School Districts. The biggest losses are projected for Broward, Miami-Dade, Palm Beach, Pinellas, Duval, and Okaloosa.

These projections are policy neutral and reflect current trends. They do not take into account changes in policy, such as modifications in promotion policies, further class size reduction, required high school majors, or any changes in FCAT requirements.