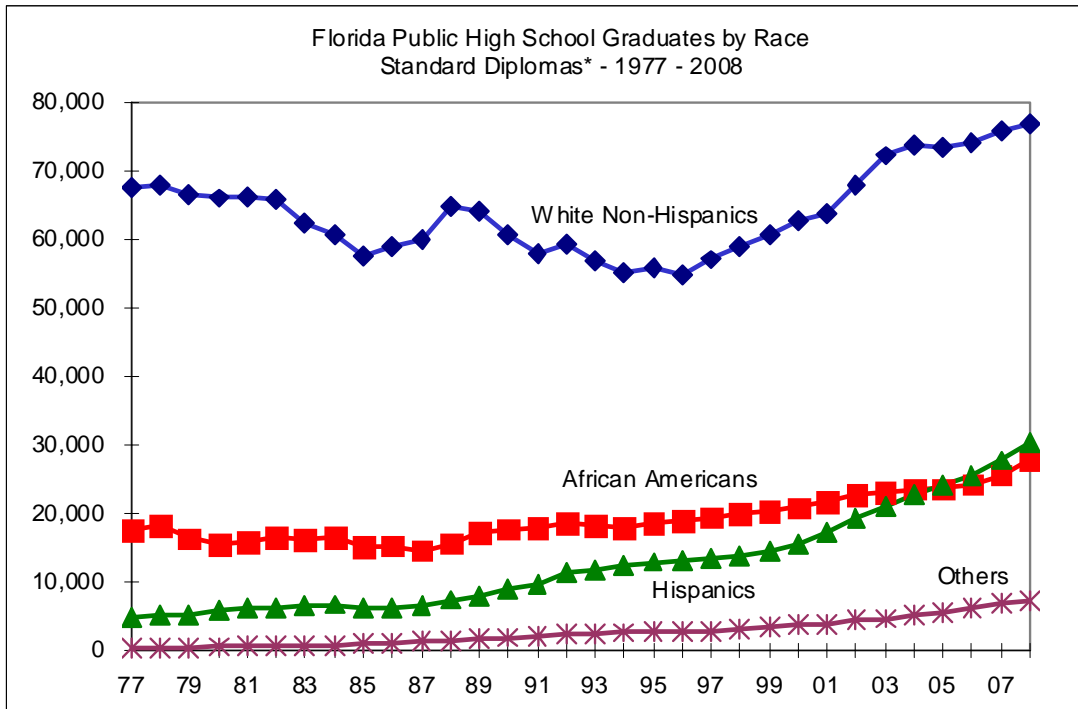


**Florida Public High School Students
Receiving Standard Diplomas**

1977-2008

January 2009

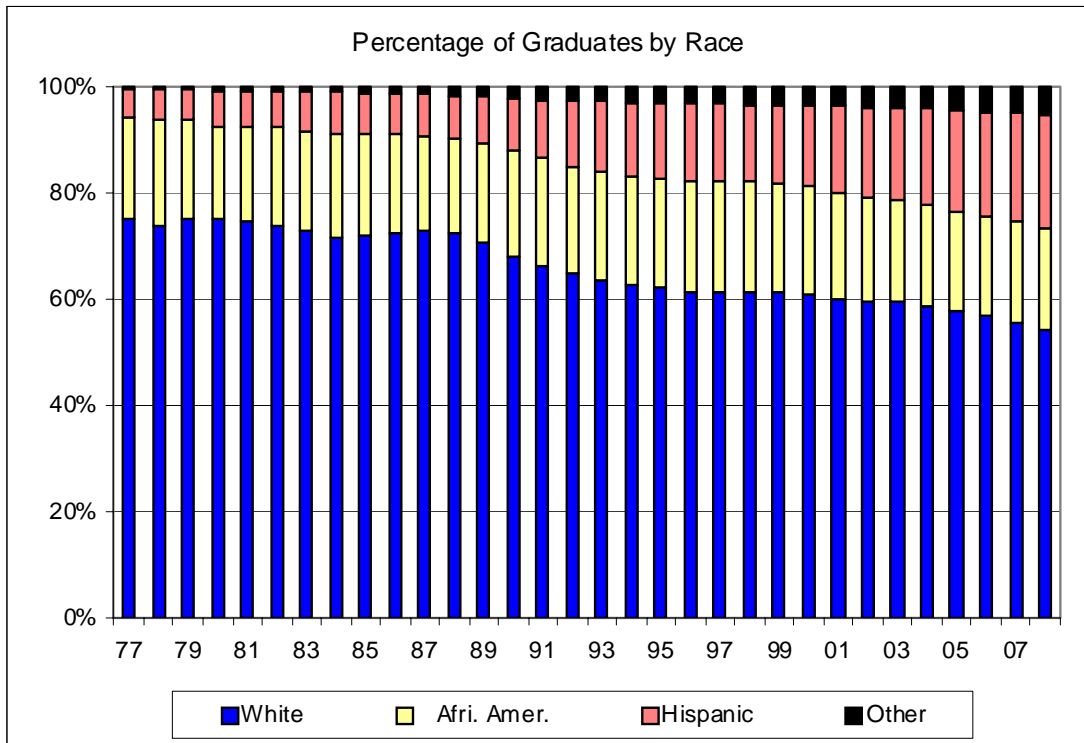
Office of Research and Evaluation
Division of Accountability, Research & Measurement
Florida Department of Education



Florida Public High School Graduates by Race
Standard Diplomas*
1977-2008

Year	White	Afri. Amer.	Hispanic	Other	Total
1976-77	67,506	17,497	4,645	289	89,937
1979-80	65,966	15,447	5,883	530	87,826
1984-85	57,578	15,014	6,142	952	79,686
1989-90	60,500	17,697	8,876	1,861	88,934
1990-91	57,847	17,832	9,610	2,130	87,419
1991-92	59,276	18,609	11,229	2,365	91,479
1992-93	56,915	18,258	11,810	2,423	89,406
1993-94	55,134	17,903	12,367	2,588	87,992
1994-95	55,815	18,501	12,882	2,629	89,827
1995-96	54,582	18,773	13,171	2,649	89,175
1996-97	56,839	19,298	13,301	2,829	92,267
1997-98	58,907	20,004	13,745	3,095	95,751
1998-99	60,696	20,303	14,532	3,361	98,892
1999-00	62,508	20,810	15,447	3,670	102,435
2000-01	63,673	21,596	17,217	3,888	106,374
2001-02	67,703	22,622	19,136	4,352	113,813
2002-03	72,119	23,161	20,958	4,609	120,847
2003-04	73,546	23,521	22,830	5,095	124,992
2004-05	73,342	23,609	24,076	5,621	126,648
2005-06	74,076	24,241	25,360	6,266	129,943
2006-07	75,742	25,628	27,739	6,784	135,893
2007-08	76,799	27,718	30,263	7,322	142,102

*From 1997-98 on includes university-based research schools. Does not include graduates from Florida School for the Deaf and the Blind or Dozier-Okeechobee. Based on data from the Office of Education Information and Accountability Services, Florida Department of Education.



Percentage of Graduates by Race
1977-2008

Year	White	Afri. Amer.	Hispanic	Other	Total
1976-77	75.1	19.5	5.2	0.3	100.0
1979-80	75.1	17.6	6.7	0.6	100.0
1984-85	72.3	18.8	7.7	1.2	100.0
1989-90	68.0	19.9	10.0	2.1	100.0
1990-91	66.1	20.4	11.0	2.4	100.0
1991-92	64.8	20.3	12.3	2.6	100.0
1992-93	63.8	20.5	13.2	2.5	100.0
1993-94	62.7	20.3	14.1	2.9	100.0
1994-95	62.1	20.6	14.3	2.9	100.0
1995-96	60.4	22.0	14.7	2.9	100.0
1996-97	61.6	20.8	14.4	3.2	100.0
1997-98	61.6	20.8	14.4	3.2	100.0
1998-99	61.6	20.6	14.7	3.4	100.0
1999-00	61.0	20.3	15.1	3.6	100.0
2000-01	59.9	20.3	16.2	3.7	100.0
2001-02	59.5	19.9	16.8	3.8	100.0
2002-03	59.7	19.2	17.3	3.8	100.0
2003-04	58.8	18.8	18.3	4.1	100.0
2004-05	57.9	18.6	19.0	4.4	100.0
2005-06	57.0	18.7	19.5	4.8	100.0
2006-07	55.7	18.9	20.4	5.0	100.0
2007-08	54.0	19.5	21.3	5.2	100.0

Graduates by Race and Gender*
1976-77 - 2007-08

	76-77	79-80	84-85	89-90	94-95	99-00	00-01	01-02	02-03	03-04	04-05	05-06	06-07	07-08
White														
Male	32,847	32,013	27,791	29,550	26,895	29,827	30,575	32,349	34,879	35,852	35,646	36,092	37,036	37,340
Female	34,659	33,953	29,787	30,863	28,920	32,681	33,098	35,354	37,240	37,694	37,696	37,984	38,706	39,459
Total	67,506	65,966	57,578	60,413	55,815	62,508	63,673	67,703	72,119	73,546	73,342	74,076	75,742	76,799
Afri. Amer.														
Male	8,216	7,068	6,926	8,014	8,034	8,987	9,544	9,817	10,331	10,549	10,678	10,663	11,378	12,260
Female	9,281	8,379	8,088	9,593	10,467	11,823	12,052	12,805	12,830	12,972	12,931	13,578	14,250	15,458
Total	17,497	15,447	15,014	17,607	18,501	20,810	21,596	22,622	23,161	23,521	23,609	24,241	25,628	27,718
Hispanic														
Male	2,184	2,755	2,913	4,247	6,022	7,148	8,141	8,912	9,879	10,642	11,330	12,030	13,076	14,054
Female	2,461	3,128	3,229	4,626	6,860	8,299	9,076	10,224	11,079	12,188	12,746	13,330	14,663	16,209
Total	4,645	5,883	6,142	8,873	12,882	15,447	17,217	19,136	20,958	22,830	24,076	25,360	27,739	30,263
Other														
Male	152	289	468	967	1,289	1,716	1,818	2,249	2,220	2,508	2,690	3,006	3,259	3,544
Female	137	241	484	888	1,340	1,954	2,070	2,103	2,389	2,587	2,931	3,260	3,525	3,778
Total	289	530	952	1,855	2,629	3,670	3,888	4,352	4,609	5,095	5,621	6,266	6,784	7,322
Total														
Male	43,399	42,125	38,098	42,778	42,240	47,678	50,078	53,327	57,309	59,551	60,344	61,791	64,749	67,198
Female	46,538	45,701	41,588	45,970	47,587	54,757	56,296	60,486	63,538	65,441	66,304	68,152	71,144	74,904
Total	89,937	87,826	79,686	88,748	89,827	102,435	106,374	113,813	120,847	124,992	126,648	129,943	135,893	142,102

*Graduates receiving a standard diploma. Based on data from the Office of Education Information and Accountability Services.

Percentage of Graduates by Race and Gender
1976-77 - 2007-08

Year	76-77	79-80	84-85	89-90	94-95	99-00	00-01	01-02	02-03	03-04	04-05	05-06	06-07	07-08
White														
Male	48.7	48.5	48.6	48.7	48.2	47.7	48.0	47.8	48.4	48.7	48.6	48.7	48.9	48.6
Female	51.3	51.5	51.4	51.3	51.8	52.3	52.0	52.2	51.6	51.3	51.4	51.3	51.1	51.4
Total	100.0	100.0	100.0	100.0	100.0	100.0	100.0	100.0	100.0	100.0	100.0	100.0	100.0	100.0
Afri. Amer.														
Male	47.0	45.8	46.0	45.8	43.4	43.2	44.2	43.4	44.6	44.8	45.2	44.0	44.4	44.2
Female	53.0	54.2	54.0	54.2	56.6	56.8	55.8	56.6	55.4	55.2	54.8	56.0	55.6	55.8
Total	100.0	100.0	100.0	100.0	100.0	100.0	100.0	100.0	100.0	100.0	100.0	100.0	100.0	100.0
Hispanic														
Male	47.0	46.8	47.8	48.8	46.7	46.3	47.3	46.6	47.1	46.6	47.1	47.4	47.1	46.4
Female	53.0	53.2	52.2	51.2	53.3	53.7	52.7	53.4	52.9	53.4	52.9	52.6	52.9	53.6
Total	100.0	100.0	100.0	100.0	100.0	100.0	100.0	100.0	100.0	100.0	100.0	100.0	100.0	100.0
Other														
Male	52.6	54.5	50.7	50.1	49.0	46.8	46.8	51.7	48.2	49.2	47.9	48.0	48.0	48.4
Female	47.4	45.5	49.3	49.9	51.0	53.2	53.2	48.3	51.8	50.8	52.1	52.0	52.0	51.6
Total	100.0	100.0	100.0	100.0	100.0	100.0	100.0	100.0	100.0	100.0	100.0	100.0	100.0	100.0
Total														
Male	48.3	48.0	48.1	48.2	47.0	46.5	47.1	46.9	47.4	47.6	47.6	47.6	47.6	47.3
Female	51.7	52.0	51.9	51.8	53.0	53.5	52.9	53.1	52.6	52.4	52.4	52.4	52.4	52.7
Total	100.0	100.0	100.0	100.0	100.0	100.0	100.0	100.0	100.0	100.0	100.0	100.0	100.0	100.0

Percentage of Graduates by Race for Each Gender
1976-77 - 2007-08

Year	76-77	79-80	84-85	89-90	94-95	99-00	00-01	01-02	02-03	03-04	04-05	05-06	06-07	07-08
Male														
White	75.7	76.0	72.9	69.1	63.7	62.6	61.1	60.7	60.9	60.2	59.1	58.4	57.2	55.6
Afri. Amer.	18.9	16.8	18.2	18.7	19.0	18.8	19.1	18.4	18.0	17.7	17.7	17.3	17.6	18.2
Hispanic	5.0	6.5	7.6	9.9	14.3	15.0	16.3	16.7	17.2	17.9	18.8	19.5	20.2	20.9
Other	0.4	0.7	1.2	2.3	3.1	3.6	3.6	4.2	3.9	4.2	4.5	4.9	5.0	5.3
Total	100.0	100.0	100.0	100.0	100.0	100.0	100.0	100.0	100.0	100.0	100.0	100.0	100.0	100.0
Female														
White	74.5	74.3	71.6	67.1	60.8	59.7	58.8	58.4	58.6	57.6	56.9	55.7	54.4	52.7
Afri. Amer.	19.9	18.3	19.4	20.9	22.0	21.6	21.4	21.2	20.2	19.8	19.5	19.9	20.0	20.6
Hispanic	5.3	6.8	7.8	10.1	14.4	15.2	16.1	16.9	17.4	18.6	19.2	19.6	20.6	21.6
Other	0.3	0.5	1.2	1.9	2.8	3.6	3.7	3.5	3.8	4.0	4.4	4.8	5.0	5.0
Total	100.0	100.0	100.0	100.0	100.0	100.0	100.0	100.0	100.0	100.0	100.0	100.0	100.0	100.0
Total														
White	75.1	75.1	72.3	68.1	62.1	61.0	59.9	59.5	59.7	58.8	57.9	57.0	55.7	54.0
Afri. Amer.	19.5	17.6	18.8	19.8	20.6	20.3	20.3	19.9	19.2	18.8	18.6	18.7	18.9	19.5
Hispanic	5.2	6.7	7.7	10.0	14.3	15.1	16.2	16.8	17.3	18.3	19.0	19.5	20.4	21.3
Other	0.3	0.6	1.2	2.1	2.9	3.6	3.7	3.8	3.8	4.1	4.4	4.8	5.0	5.2
Total	100.0	100.0	100.0	100.0	100.0	100.0	100.0	100.0	100.0	100.0	100.0	100.0	100.0	100.0
Total %	100.0	100.0	100.0	100.0	100.0	100.0	100.0	100.0	100.0	100.0	100.0	100.0	100.0	100.0

Florida High School Completers
By Type of Diploma/Certificate

	Number					Percentage				
	1 Standard Diploma	2 Special Diploma	3 Certificate of Completion	4 Special Cert. Of Completion	5 Total	6 Standard Diploma (1/5)	7 Special Diploma (2/5)	8 Certificate of Completion (3/5)	9 Special Cert. Of Completion (4/5)	10 Total Spec. Dip/Cert (7+8+9)
Totals										
1984-85	79,686	1,454	326	497	81,963	97.2	1.8	0.4	0.61	2.8
1989-90	88,934	1,856	415	283	91,488	97.2	2.0	0.5	0.31	2.8
1994-95	89,842	2,056	955	226	93,079	96.5	2.2	1.0	0.24	3.5
1999-2000	102,177	3,781	3,839	157	109,954	92.9	3.4	3.5	0.14	7.1
2003-04	124,756	6,242	7,552	131	138,681	90.0	4.5	5.4	0.09	10.0
2004-05	126,393	6,472	8,526	77	141,468	89.3	4.6	6.0	0.05	10.7
2005-06	129,676	6,409	9,674	121	145,880	88.9	4.4	6.6	0.08	11.1
2006-07	135,615	6,515	9,718	91	151,939	89.3	4.3	6.4	0.06	10.7
2007-08	141,813	6,131	9,292	122	157,358	90.1	3.9	5.9	0.08	9.9
Whites										
1984-85	57,578	588	132	263	58,561	98.3	1.0	0.2	0.45	1.7
1989-90	60,500	1,005	133	156	61,794	97.9	1.6	0.2	0.25	2.1
1994-95	55,142	1,052	234	120	56,548	97.5	1.9	0.4	0.21	2.5
1999-2000	62,441	1,813	917	91	65,262	95.7	2.8	1.4	0.14	4.3
2003-04	73,418	2,883	1,530	62	77,893	94.3	3.7	2.0	0.08	5.7
2004-05	73,194	3,014	1,622	41	77,871	94.0	3.9	2.1	0.05	6.0
2005-06	73,930	2,774	1,912	54	78,670	94.0	3.5	2.4	0.07	6.0
2006-07	75,605	2,824	1,812	52	80,293	94.2	3.5	2.3	0.06	5.8
2007-08	76,637	2,579	1,565	56	80,837	94.8	3.2	1.9	0.07	5.2
African Americans										
1984-85	15,014	822	155	202	16,193	92.7	5.1	1.0	1.25	7.3
1989-90	17,697	712	197	94	18,700	94.6	3.8	1.1	0.50	5.4
1994-95	18,501	747	490	63	19,801	93.4	3.8	2.5	0.32	6.6
1999-2000	20,719	1,305	1,830	38	23,892	86.7	5.5	7.7	0.16	13.3
2003-04	23,439	2,362	3,594	43	29,438	79.6	8.0	12.2	0.15	20.4
2004-05	23,530	2,370	4,068	23	29,991	78.5	7.9	13.6	0.08	21.5
2005-06	24,149	2,451	4,238	33	30,871	78.2	7.9	13.7	0.11	21.8
2006-07	25,534	2,467	4,050	28	32,079	79.6	7.7	12.6	0.09	20.4
2007-08	27,626	2,324	3,931	38	33,919	81.4	6.9	11.6	0.11	18.6
Hispanics										
1984-85	6,142	43	34	32	6,251	98.3	0.7	0.5	0.51	1.7
1989-90	8,876	112	63	30	9,081	97.7	1.2	0.7	0.33	2.3
1994-95	12,882	226	188	40	13,336	96.6	1.7	1.4	0.30	3.4
1999-2000	15,440	396	922	19	16,777	92.0	2.4	5.5	0.11	8.0
2003-04	22,817	895	2,199	24	25,935	88.0	3.5	8.5	0.09	12.0
2004-05	24,060	976	2,524	10	27,570	87.3	3.5	9.2	0.04	12.7
2005-06	25,344	1,088	3,208	29	29,669	85.4	3.7	10.8	0.10	14.6
2006-07	27,712	1,098	3,376	9	32,195	86.1	3.4	10.5	0.03	13.9
2007-08	30,239	1,092	3,428	24	34,783	86.9	3.1	9.9	0.07	13.1

*Includes only the 67 county school districts.

