

Data Report

Teacher Salary, Experience, and Degree Level, 2009-10

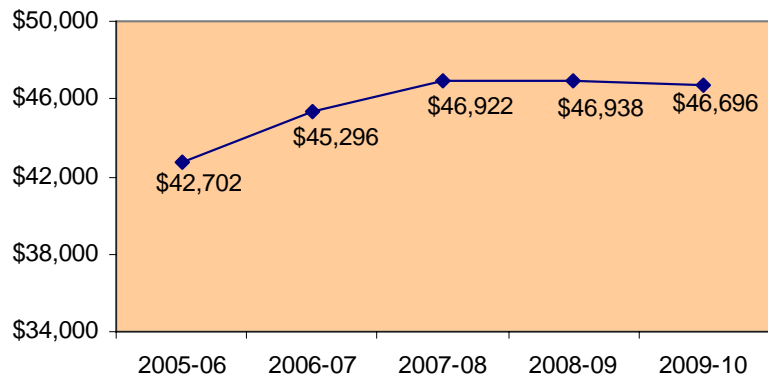
Table 1: Teachers' Average Years of Experience by Degree Level, 2009-10. 2
 Table 2: Teachers by Degree Level, 2007-08 through 2009-10..... 2
 Table 3: Average Teacher Salaries by Degree Level, 2009-10..... 3
 Table 4: Teachers by Degree Level, 2009-10* 4
 Table 5: Teachers' Average Years of Experience by Degree Level, 2009-10. 5
 Table 6: Minimum/Maximum Teacher Salaries by Degree Level, 2009-10..... 6
 Table 7: Median Teacher Salaries by Degree Level, 2009-10..... 7
 Table 8: Comparison of Average Teacher Salaries, 2005-06 through 2009-10 8
 Table 9: Percent Change in Average Teacher Salaries, 2008-09 to 2009-10. 9
 Table 10: Average Teacher Salaries in Rank Order, 2009-10 10

Average Salaries

The average salary paid to a Florida public school teacher in the 2009-10 school year was \$46,696. This represents a decrease of \$242 (-0.52 percent) over the average salary of \$46,938 for the 2008-09 school year.

Figure 1 displays the average teacher salaries in Florida public schools from 2005-06 through 2009-10. The average teacher salary increased by \$3,994 since 2005-06, an increase of 9.35 percent.

Figure 1: Average Teacher* Salary 2005-06 through 2009-10**



*A professional paid on the instructional salary schedule negotiated by a Florida school district.

**Data Source: Florida DOE Staff Database, Survey 3, February 8-12, 2010, as of August 13, 2010



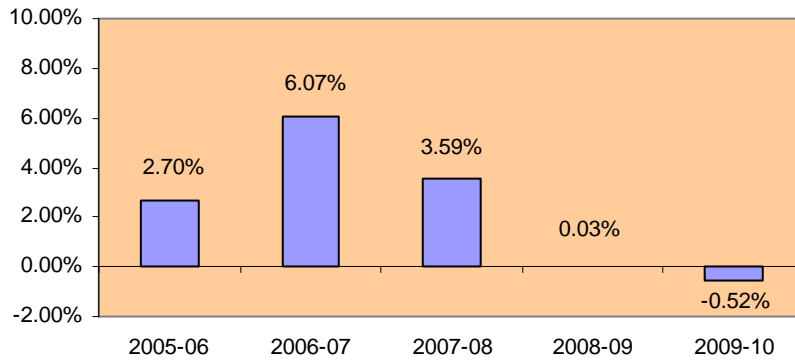
Florida Department of Education
 Eric J. Smith, Commissioner

Cautionary Note

In Florida, each public school district, after collective bargaining activities, adopts a salary schedule for instructional personnel in that district. In some school districts, a salary schedule for the school year is negotiated and adopted after the collection of salary data for that school year by the Department of Education (DOE). In many of these districts, the final negotiated salary schedule provides retroactive pay to instructional personnel for the entire school year. When this happens, the salary information on the DOE Staff Database does not reflect the subsequent salary increase for that district. Users of teacher salary data are advised to be aware of this and other factors affecting the data when making judgments and drawing conclusions based on these data.

Figure 2 shows the percent increase in average teacher salaries for the past five years. The highest percent increase over the previous year occurred in 2006-07 at 6.07 percent. In 2009-10 the average teacher salary decreased by 0.52 percent.

**Figure 2: Percent Increase in Average Teacher Salary
2005-06 through 2009-10***



Experience

For all degree levels, Florida teachers currently average 12.37 years of teaching experience, as shown in Table 1 below. The average number of years of experience includes both public and private teaching experience from within and outside the state. Since teachers' average years of experience greatly impacts the average salary for teachers, this factor should be taken into consideration when comparing average teacher salaries of the districts.

**Table 1: Teachers' Average Years of Experience
by Degree Level, 2009-10***

Bachelor's	10.58
Master's	14.84
Specialist	16.34
Doctorate	15.17
All Degrees	12.37

Degree Level

Table 2 below displays the number and percent of teachers at each degree level for school years 2007-08 through 2009-10. The proportion of teachers at each degree level has remained relatively consistent.

Table 2: Teachers by Degree Level, 2007-08 through 2009-10*

	<u>2007-08</u>		<u>2008-09</u>		<u>2009-10</u>	
	<u>Number</u>	<u>Percent</u>	<u>Number</u>	<u>Percent</u>	<u>Number</u>	<u>Percent</u>
Bachelor's	113,774	60.74	109,789	59.69	107,842	59.12
Master's	66,298	35.39	66,757	36.30	67,141	36.81
Specialist	4,769	2.55	4,901	2.66	4,967	2.72
Doctorate	2,475	1.32	2,478	1.35	2,458	1.35
All Degrees	187,316	100.00	183,925	100.00	182,408	100.00

District-level information on teacher salaries, experience, and degree level is displayed in Table 3 through Table 8 on the following pages.

* Survey 3, February 8-12, 2010, as of August 13, 2010

Table 3: Average Teacher Salaries by Degree Level, 2009-10*

District Number	District Name	Bachelor's		Master's		Specialist		Doctorate		Total	
		Number	Salary	Number	Salary	Number	Salary	Number	Salary	Number	Salary
1	Alachua	893	\$38,743	933	\$43,566	112	\$47,184	50	\$48,232	1,988	\$41,721
2	Baker	217	\$40,368	80	\$47,611	0	\$0	2	\$49,447	299	\$42,367
3	Bay	1,174	\$40,283	627	\$47,724	50	\$50,443	18	\$50,708	1,869	\$43,152
4	Bradford	190	\$37,932	60	\$43,155	7	\$43,661	2	\$36,666	259	\$39,287
5	Brevard	2,987	\$42,543	1,982	\$48,404	62	\$52,834	59	\$51,340	5,090	\$45,052
6	Broward	8,725	\$48,149	6,649	\$52,879	443	\$53,979	253	\$58,065	16,070	\$50,423
7	Calhoun	112	\$37,229	68	\$43,299	1	\$46,670	4	\$47,150	185	\$39,726
8	Charlotte	578	\$43,816	536	\$51,659	21	\$57,306	16	\$55,389	1,151	\$47,875
9	Citrus	698	\$41,660	489	\$48,693	20	\$52,043	12	\$53,459	1,219	\$44,768
10	Clay	1,913	\$44,284	790	\$48,898	11	\$61,161	12	\$54,300	2,726	\$45,733
11	Collier	1,501	\$48,208	1,370	\$58,601	69	\$62,929	49	\$64,020	2,989	\$53,571
12	Columbia	492	\$38,375	252	\$46,493	10	\$46,843	4	\$51,827	758	\$41,257
13	Dade	9,879	\$45,779	8,410	\$53,465	2,149	\$60,110	558	\$61,762	20,996	\$50,749
14	DeSoto	238	\$40,374	78	\$46,340	3	\$57,657	4	\$40,129	323	\$41,972
15	Dixie	86	\$39,220	46	\$44,617	0	\$0	0	\$0	132	\$41,101
16	Duval	5,727	\$44,446	2,489	\$51,356	64	\$55,005	93	\$53,065	8,373	\$46,676
17	Escambia	1,827	\$39,688	1,163	\$46,071	56	\$49,561	24	\$47,370	3,070	\$42,346
18	Flagler	505	\$45,933	301	\$52,719	11	\$54,657	5	\$57,573	822	\$48,606
19	Franklin	47	\$39,867	37	\$44,319	2	\$48,186	1	\$50,808	87	\$42,077
20	Gadsden	299	\$34,623	155	\$37,370	4	\$44,618	5	\$34,576	463	\$35,628
21	Gilchrist	118	\$42,606	61	\$47,490	2	\$43,296	0	\$0	181	\$44,259
22	Glades	98	\$42,898	20	\$48,976	2	\$46,020	1	\$63,000	121	\$44,121
23	Gulf	97	\$39,012	61	\$43,882	4	\$50,618	0	\$0	162	\$41,133
24	Hamilton	103	\$41,972	31	\$44,042	0	\$0	3	\$41,244	137	\$42,424
25	Hardee	307	\$42,036	59	\$45,802	3	\$45,353	0	\$0	369	\$42,665
26	Hendry	281	\$40,559	103	\$45,786	3	\$51,823	3	\$49,128	390	\$42,092
27	Hernando	1,134	\$40,568	543	\$45,963	14	\$43,496	15	\$50,705	1,706	\$42,398
28	Highlands	602	\$41,800	251	\$48,987	6	\$52,464	11	\$47,295	870	\$44,017
29	Hillsborough	9,771	\$42,890	6,463	\$49,211	346	\$55,361	244	\$53,924	16,824	\$45,735
30	Holmes	160	\$38,845	87	\$46,535	5	\$44,349	0	\$0	252	\$41,609
31	Indian River	779	\$44,130	375	\$49,318	62	\$54,822	11	\$55,289	1,227	\$46,356
32	Jackson	355	\$37,944	197	\$45,424	33	\$52,356	1	\$57,293	586	\$41,303
33	Jefferson	52	\$39,924	26	\$44,116	3	\$54,556	0	\$0	81	\$41,811
34	Lafayette	56	\$40,280	18	\$44,719	3	\$47,610	1	\$45,573	78	\$41,654
35	Lake	1,771	\$39,954	1,053	\$44,776	0	\$0	27	\$49,047	2,851	\$41,821
36	Lee	3,415	\$43,166	1,720	\$50,540	73	\$54,797	71	\$53,025	5,279	\$45,862
37	Leon	1,266	\$40,018	924	\$46,057	58	\$46,732	37	\$52,290	2,285	\$42,829
38	Levy	252	\$41,800	138	\$45,790	8	\$56,147	2	\$39,176	400	\$43,451
39	Liberty	71	\$37,517	40	\$43,500	5	\$38,827	1	\$54,815	117	\$39,766
40	Madison	133	\$39,085	63	\$46,527	5	\$47,759	0	\$0	201	\$41,634
41	Manatee	1,425	\$44,568	1,218	\$52,048	60	\$59,043	51	\$59,221	2,754	\$48,463
42	Marion	1,950	\$41,341	911	\$46,585	59	\$52,226	30	\$52,168	2,950	\$43,289
43	Martin	743	\$43,972	464	\$49,598	23	\$58,814	15	\$53,247	1,245	\$46,455
44	Monroe	354	\$53,118	269	\$61,018	5	\$65,931	9	\$61,523	637	\$56,674
45	Nassau	431	\$42,294	278	\$49,530	4	\$46,608	5	\$52,761	718	\$45,192
46	Okaloosa	1,038	\$47,720	719	\$55,975	46	\$62,410	26	\$66,207	1,829	\$51,598
47	Okeechobee	352	\$42,609	86	\$49,635	5	\$54,900	2	\$41,214	445	\$44,099
48	Orange	7,286	\$42,591	4,697	\$47,977	186	\$50,348	148	\$52,735	12,317	\$44,884
49	Osceola	1,931	\$42,471	1,150	\$48,849	81	\$49,818	33	\$53,800	3,195	\$45,070
50	Palm Beach	8,309	\$47,257	3,288	\$51,475	65	\$56,839	94	\$53,090	11,756	\$48,537
51	Pasco	3,061	\$41,216	1,822	\$46,913	57	\$49,281	40	\$51,332	4,980	\$43,474
52	Pinellas	4,978	\$43,840	3,039	\$48,687	120	\$53,086	77	\$52,662	8,214	\$45,851
53	Polk	5,251	\$41,033	1,873	\$46,962	76	\$54,098	53	\$49,224	7,253	\$42,761
54	Putnam	456	\$43,672	199	\$51,111	5	\$56,197	7	\$46,257	667	\$46,013
55	St. Johns	1,076	\$44,153	741	\$49,368	13	\$55,036	12	\$50,647	1,842	\$46,370
56	St. Lucie	1,681	\$40,190	837	\$47,925	30	\$53,381	30	\$53,541	2,578	\$43,010
57	Santa Rosa	1,062	\$43,147	584	\$49,576	20	\$53,144	12	\$50,546	1,678	\$45,557
58	Sarasota	982	\$48,756	1,647	\$59,157	80	\$71,356	46	\$64,107	2,755	\$55,886
59	Seminole	2,258	\$44,483	1,865	\$52,661	132	\$59,158	95	\$64,351	4,350	\$48,868
60	Sumter	248	\$45,111	121	\$51,837	5	\$54,327	0	\$0	374	\$47,410
61	Suwannee	286	\$43,691	116	\$49,374	3	\$55,707	2	\$43,172	407	\$45,396
62	Taylor	130	\$36,749	61	\$46,313	14	\$55,204	2	\$49,381	207	\$40,938
63	Union	109	\$37,044	56	\$42,068	1	\$41,220	2	\$38,642	168	\$38,763
64	Volusia	2,525	\$41,798	1,787	\$49,746	101	\$56,010	49	\$56,495	4,462	\$45,464
65	Wakulla	219	\$37,885	117	\$45,094	7	\$46,128	0	\$0	343	\$40,512
66	Walton	378	\$44,217	174	\$50,542	12	\$50,121	12	\$53,448	576	\$46,443
67	Washington	197	\$39,837	82	\$48,016	11	\$49,491	0	\$0	290	\$42,516
	Districts 1-67	107,625	\$43,745	66,949	\$50,375	4,951	\$56,792	2,451	\$56,282	181,976	\$46,708
68	School for Deaf/Blind	58	\$40,298	63	\$46,082	0	\$0	0	\$0	121	\$43,309
69	Dozier/Okeechobee	18	\$51,676	10	\$54,781	4	\$59,283	0	\$0	32	\$53,597
72	FAU Lab School	86	\$38,909	54	\$45,082	3	\$69,250	0	\$0	143	\$41,877
73	FSU Charter	1	\$34,500	1	\$37,372	1	\$32,599	0	\$0	3	\$34,824
74	FAMU Lab School	29	\$33,653	15	\$31,098	2	\$37,168	0	\$0	46	\$32,972
75	UF Lab School	25	\$35,422	49	\$39,517	6	\$47,307	7	\$46,262	87	\$39,420
	Florida	107,842	\$43,735	67,141	\$50,355	4,967	\$56,777	2,458	\$56,254	182,408	\$46,696

* Survey 3, February 8-12, 2010, as of August 13, 2010

Table 4: Teachers by Degree Level, 2009-10*

District Number	District Name	Bachelor's		Master's		Specialist		Doctorate		Total Number
		Number	% of Total	Number	% of Total	Number	% of Total	Number	% of Total	
1	Alachua	893	44.92	933	46.93	112	5.63	50	2.52	1,988
2	Baker	217	72.58	80	26.76	0	0	2	0.67	299
3	Bay	1,174	62.81	627	33.55	50	2.68	18	0.96	1,869
4	Bradford	190	73.36	60	23.17	7	2.7	2	0.77	259
5	Brevard	2,987	58.68	1,982	38.94	62	1.22	59	1.16	5,090
6	Broward	8,725	54.29	6,649	41.38	443	2.76	253	1.57	16,070
7	Calhoun	112	60.54	68	36.76	1	0.54	4	2.16	185
8	Charlotte	578	50.22	536	46.57	21	1.82	16	1.39	1,151
9	Citrus	698	57.26	489	40.11	20	1.64	12	0.98	1,219
10	Clay	1,913	70.18	790	28.98	11	0.4	12	0.44	2,726
11	Collier	1,501	50.22	1,370	45.83	69	2.31	49	1.64	2,989
12	Columbia	492	64.91	252	33.25	10	1.32	4	0.53	758
13	Dade	9,879	47.05	8,410	40.06	2,149	10.24	558	2.66	20,996
14	DeSoto	238	73.68	78	24.15	3	0.93	4	1.24	323
15	Dixie	86	65.15	46	34.85	0	0	0	0	132
16	Duval	5,727	68.4	2,489	29.73	64	0.76	93	1.11	8,373
17	Escambia	1,827	59.51	1,163	37.88	56	1.82	24	0.78	3,070
18	Flagler	505	61.44	301	36.62	11	1.34	5	0.61	822
19	Franklin	47	54.02	37	42.53	2	2.3	1	1.15	87
20	Gadsden	299	64.58	155	33.48	4	0.86	5	1.08	463
21	Gilchrist	118	65.19	61	33.7	2	1.1	0	0	181
22	Glades	98	80.99	20	16.53	2	1.65	1	0.83	121
23	Gulf	97	59.88	61	37.65	4	2.47	0	0	162
24	Hamilton	103	75.18	31	22.63	0	0	3	2.19	137
25	Hardee	307	83.2	59	15.99	3	0.81	0	0	369
26	Hendry	281	72.05	103	26.41	3	0.77	3	0.77	390
27	Hernando	1,134	66.47	543	31.83	14	0.82	15	0.88	1,706
28	Highlands	602	69.2	251	28.85	6	0.69	11	1.26	870
29	Hillsborough	9,771	58.08	6,463	38.42	346	2.06	244	1.45	16,824
30	Holmes	160	63.49	87	34.52	5	1.98	0	0	252
31	Indian River	779	63.49	375	30.56	62	5.05	11	0.9	1,227
32	Jackson	355	60.58	197	33.62	33	5.63	1	0.17	586
33	Jefferson	52	64.2	26	32.1	3	3.7	0	0	81
34	Lafayette	56	71.79	18	23.08	3	3.85	1	1.28	78
35	Lake	1,771	62.12	1,053	36.93	0	0	27	0.95	2,851
36	Lee	3,415	64.69	1,720	32.58	73	1.38	71	1.34	5,279
37	Leon	1,266	55.4	924	40.44	58	2.54	37	1.62	2,285
38	Levy	252	63	138	34.5	8	2	2	0.5	400
39	Liberty	71	60.68	40	34.19	5	4.27	1	0.85	117
40	Madison	133	66.17	63	31.34	5	2.49	0	0	201
41	Manatee	1,425	51.74	1,218	44.23	60	2.18	51	1.85	2,754
42	Marion	1,950	66.1	911	30.88	59	2	30	1.02	2,950
43	Martin	743	59.68	464	37.27	23	1.85	15	1.2	1,245
44	Monroe	354	55.57	269	42.23	5	0.78	9	1.41	637
45	Nassau	431	60.03	278	38.72	4	0.56	5	0.7	718
46	Okaloosa	1,038	56.75	719	39.31	46	2.52	26	1.42	1,829
47	Okeechobee	352	79.1	86	19.33	5	1.12	2	0.45	445
48	Orange	7,286	59.15	4,697	38.13	186	1.51	148	1.2	12,317
49	Osceola	1,931	60.44	1,150	35.99	81	2.54	33	1.03	3,195
50	Palm Beach	8,309	70.68	3,288	27.97	65	0.55	94	0.8	11,756
51	Pasco	3,061	61.47	1,822	36.59	57	1.14	40	0.8	4,980
52	Pinellas	4,978	60.6	3,039	37	120	1.46	77	0.94	8,214
53	Polk	5,251	72.4	1,873	25.82	76	1.05	53	0.73	7,253
54	Putnam	456	68.37	199	29.84	5	0.75	7	1.05	667
55	St. Johns	1,076	58.41	741	40.23	13	0.71	12	0.65	1,842
56	St. Lucie	1,681	65.21	837	32.47	30	1.16	30	1.16	2,578
57	Santa Rosa	1,062	63.29	584	34.8	20	1.19	12	0.72	1,678
58	Sarasota	982	35.64	1,647	59.78	80	2.9	46	1.67	2,755
59	Seminole	2,258	51.91	1,865	42.87	132	3.03	95	2.18	4,350
60	Sumter	248	66.31	121	32.35	5	1.34	0	0	374
61	Suwannee	286	70.27	116	28.5	3	0.74	2	0.49	407
62	Taylor	130	62.8	61	29.47	14	6.76	2	0.97	207
63	Union	109	64.88	56	33.33	1	0.6	2	1.19	168
64	Volusia	2,525	56.59	1,787	40.05	101	2.26	49	1.1	4,462
65	Wakulla	219	63.85	117	34.11	7	2.04	0	0	343
66	Walton	378	65.63	174	30.21	12	2.08	12	2.08	576
67	Washington	197	67.93	82	28.28	11	3.79	0	0	290
	Districts 1-67	107,625	59.14	66,949	36.79	4,951	2.72	2,451	1.35	181,976
68	School for Deaf/Blind	58	47.93	63	52.07	0	0	0	0	121
69	Dozier/Okeechobee	18	56.25	10	31.25	4	12.5	0	0	32
72	FAU Lab School	86	60.14	54	37.76	3	2.1	0	0	143
73	FSU Charter	1	33.33	1	33.33	1	33.33	0	0	3
74	FAMU Lab School	29	63.04	15	32.61	2	4.35	0	0	46
75	UF Lab School	25	28.74	49	56.32	6	6.9	7	8.05	87
	Florida	107,842	59.12	67,141	36.81	4,967	2.72	2,458	1.35	182,408

* Survey 3, February 8-12, 2010, as of August 13, 2010

Table 5: Teachers' Average Years of Experience by Degree Level, 2009-10*

District Number	District Name	Bachelor's	Master's	Specialist	Doctorate	All Degrees
1	Alachua	11.95	15.68	17.67	16.52	14.14
2	Baker	9.82	15.81	0.00	13.00	11.44
3	Bay	13.00	16.91	19.34	20.88	14.56
4	Bradford	16.63	19.23	14.57	6.00	17.09
5	Brevard	12.18	16.47	20.77	17.42	14.02
6	Broward	11.40	15.47	15.81	16.67	13.30
7	Calhoun	10.45	15.45	21.00	12.00	12.38
8	Charlotte	12.12	18.16	19.76	22.43	15.22
9	Citrus	11.84	18.46	18.90	22.50	14.72
10	Clay	10.25	13.75	19.40	15.72	11.28
11	Collier	9.77	15.26	16.17	17.73	12.56
12	Columbia	11.01	17.76	15.90	20.75	13.37
13	Dade	9.13	13.01	15.74	13.55	11.48
14	DeSoto	11.01	16.24	17.66	14.75	12.38
15	Dixie	13.04	17.69	0.00	0.00	14.66
16	Duval	10.05	14.97	16.81	11.23	11.58
17	Escambia	8.43	13.02	16.66	11.04	10.34
18	Flagler	10.40	14.61	13.90	12.20	12.00
19	Franklin	9.63	15.72	24.00	31.00	12.80
20	Gadsden	9.93	13.96	18.75	5.60	11.31
21	Gilchrist	12.84	16.11	9.50	0.00	13.91
22	Glades	8.71	15.95	9.00	25.00	10.08
23	Gulf	13.06	17.31	25.00	0.00	14.95
24	Hamilton	12.77	11.23	0.00	12.00	12.39
25	Hardee	11.71	13.81	17.00	0.00	12.09
26	Hendry	6.60	8.40	12.00	15.66	7.46
27	Hernando	10.11	15.47	14.42	13.46	11.88
28	Highlands	12.21	17.97	18.16	17.90	13.98
29	Hillsborough	9.59	13.78	14.95	13.65	11.37
30	Holmes	10.85	18.36	9.60	0.00	13.42
31	Indian River	11.49	14.92	16.48	15.81	12.83
32	Jackson	10.25	17.94	22.27	27.00	13.54
33	Jefferson	9.63	9.15	18.66	0.00	9.81
34	Lafayette	12.26	15.33	13.33	12.00	13.01
35	Lake	10.33	14.30	0.00	13.14	11.82
36	Lee	10.16	16.25	19.31	16.50	12.35
37	Leon	11.79	16.90	17.63	19.20	14.13
38	Levy	12.42	14.66	21.00	4.50	13.32
39	Liberty	8.49	13.57	2.20	3.00	9.91
40	Madison	10.50	15.74	15.20	0.00	12.26
41	Manatee	9.93	13.83	18.18	14.58	11.94
42	Marion	11.78	16.04	19.62	17.68	13.31
43	Martin	10.08	12.20	16.21	7.20	10.95
44	Monroe	11.61	16.21	19.00	11.88	13.62
45	Nassau	9.19	13.98	8.75	11.20	11.05
46	Okaloosa	12.62	17.32	19.02	20.57	14.74
47	Okeechobee	12.44	18.54	26.20	3.50	13.74
48	Orange	10.67	14.31	16.08	15.91	12.23
49	Osceola	8.67	13.36	13.16	15.12	10.54
50	Palm Beach	11.07	14.37	15.89	14.86	12.05
51	Pasco	9.77	14.43	12.54	16.22	11.56
52	Pinellas	12.47	16.23	17.05	16.72	13.98
53	Polk	10.27	15.68	19.17	14.73	11.79
54	Putnam	12.07	17.47	20.60	7.71	13.71
55	St. Johns	8.74	11.11	9.83	8.00	9.69
56	St. Lucie	8.52	13.56	18.00	13.96	10.33
57	Santa Rosa	12.11	16.45	19.20	17.41	13.74
58	Sarasota	11.78	14.93	14.88	13.95	13.79
59	Seminole	12.07	16.58	18.71	20.72	14.40
60	Sumter	11.98	16.77	10.00	0.00	13.51
61	Suwannee	12.90	16.37	20.66	5.00	13.91
62	Taylor	5.53	12.59	14.71	13.00	8.30
63	Union	9.57	13.07	15.00	7.00	10.74
64	Volusia	11.98	17.09	21.20	19.93	14.33
65	Wakulla	10.35	17.47	14.42	0.00	12.86
66	Walton	8.27	11.47	8.91	9.50	9.27
67	Washington	9.04	15.50	18.27	0.00	11.22
	Districts 1-67	10.58	14.84	16.33	15.17	12.37
69	Dozier/Okeechobee	9.88	13.70	17.00	0.00	11.96
72	FAU Lab School	5.81	9.33	26.66	0.00	7.57
73	FSU Charter	5.00	9.00	6.00	0.00	6.66
74	FAMU Lab School	8.32	17.00	7.50	0.00	11.04
75	UF Lab School	9.92	12.42	22.00	13.57	12.23
	Florida	10.58	14.84	16.34	15.17	12.37

* Survey 3, February 8-12, 2010, as of August 13, 2010

Table 6: Minimum/Maximum Teacher Salaries by Degree Level, 2009-10*

District	District Name	Bachelor's		Master's		Specialist		Doctorate	
		Minimum	Maximum	Minimum	Maximum	Minimum	Maximum	Minimum	Maximum
1	Alachua	\$32,450	\$49,850	\$33,950	\$53,950	\$34,950	\$57,050	\$35,950	\$60,475
2	Baker	\$32,010	\$54,000	\$34,440	\$56,430	\$35,410	\$57,400	\$36,450	\$58,440
3	Bay	\$32,305	\$55,321	\$34,869	\$58,292	\$36,815	\$60,270	\$38,731	\$62,250
4	Bradford	\$32,025	\$55,094	\$34,525	\$57,594	\$35,225	\$58,294	\$36,025	\$59,094
5	Brevard	\$36,000	\$56,350	\$38,625	\$58,975	\$39,900	\$60,250	\$41,200	\$61,550
6	Broward	\$39,000	\$71,250	\$42,650	\$74,900	\$45,800	\$78,050	\$47,000	\$79,250
7	Calhoun	\$31,475	\$47,375	\$33,900	\$49,800	\$35,170	\$51,070	\$36,385	\$52,285
8	Charlotte	\$37,440	\$55,030	\$40,990	\$58,580	\$42,990	\$60,580	\$44,590	\$62,180
9	Citrus	\$33,858	\$52,521	\$35,858	\$54,521	\$36,858	\$55,521	\$37,858	\$56,521
10	Clay	\$37,800	\$60,000	\$39,800	\$62,000	\$40,500	\$62,700	\$41,100	\$63,300
11	Collier	\$38,198	\$62,149	\$40,893	\$68,298	\$42,393	\$70,298	\$43,393	\$71,298
12	Columbia	\$32,400	\$56,040	\$35,200	\$58,840	\$36,350	\$59,990	\$37,550	\$61,190
13	Dade	\$38,500	\$68,225	\$41,600	\$71,325	\$43,650	\$73,375	\$45,700	\$75,425
14	DeSoto	\$35,108	\$55,534	\$38,308	\$58,734	\$38,466	\$58,892	\$40,069	\$60,495
15	Dixie	\$31,200	\$48,782	\$33,592	\$51,257	\$34,112	\$51,796	\$34,320	\$52,011
16	Duval	\$37,300	\$65,301	\$38,300	\$68,449	\$39,300	\$69,888	\$40,300	\$71,891
17	Escambia	\$32,500	\$51,471	\$35,000	\$53,971	\$35,600	\$54,571	\$36,100	\$55,071
18	Flagler	\$38,213	\$57,677	\$40,693	\$60,427	\$42,463	\$61,927	\$43,713	\$63,177
19	Franklin	\$31,719	\$49,328	\$33,927	\$55,049	\$35,675	\$57,909	\$37,424	\$60,773
20	Gadsden	\$30,910	\$46,208	\$32,178	\$47,475	\$32,729	\$48,026	\$33,391	\$48,687
21	Gilchrist	\$32,694	\$51,657	\$34,961	\$53,924	\$35,450	\$54,413	\$36,131	\$55,094
22	Glades	\$34,000	\$55,000	\$35,500	\$57,400	\$37,500	\$60,600	\$39,000	\$63,000
23	Gulf	\$30,951	\$49,538	\$32,936	\$51,991	\$34,259	\$53,393	\$35,557	\$54,793
24	Hamilton	\$32,829	\$50,116	\$35,329	\$52,616	\$36,329	\$53,616	\$36,829	\$54,116
25	Hardee	\$33,015	\$51,877	\$35,260	\$55,404	\$35,590	\$55,923	\$35,887	\$56,390
26	Hendry	\$33,840	\$52,800	\$35,980	\$54,760	\$36,980	\$55,970	\$38,980	\$58,000
27	Hernando	\$35,000	\$53,350	\$37,500	\$56,350	\$38,500	\$57,350	\$39,500	\$58,350
28	Highlands	\$34,000	\$54,000	\$36,200	\$56,200	\$36,500	\$56,500	\$37,800	\$57,800
29	Hillsborough	\$37,201	\$61,906	\$40,129	\$64,834	\$41,601	\$66,306	\$43,057	\$67,762
30	Holmes	\$31,500	\$48,500	\$33,500	\$50,900	\$34,645	\$52,054	\$35,803	\$53,224
31	Indian River	\$35,500	\$57,100	\$38,453	\$60,053	\$39,409	\$61,009	\$40,374	\$61,974
32	Jackson	\$31,853	\$49,109	\$34,909	\$52,226	\$37,976	\$55,346	\$39,893	\$57,293
33	Jefferson	\$32,500	\$50,000	\$34,125	\$52,500	\$34,938	\$53,750	\$35,750	\$55,000
34	Lafayette	\$33,983	\$51,532	\$36,183	\$53,732	\$37,283	\$54,832	\$37,943	\$55,492
35	Lake	\$35,600	\$54,550	\$37,975	\$56,925	\$38,925	\$57,875	\$39,925	\$58,875
36	Lee	\$38,192	\$59,941	\$40,692	\$62,441	\$42,192	\$63,941	\$43,192	\$64,941
37	Leon	\$34,100	\$60,576	\$35,300	\$63,095	\$36,500	\$65,172	\$37,700	\$66,846
38	Levy	\$32,427	\$49,979	\$35,239	\$52,789	\$35,950	\$53,531	\$36,659	\$54,211
39	Liberty	\$31,770	\$49,812	\$34,704	\$52,746	\$36,304	\$54,346	\$36,705	\$54,747
40	Madison	\$33,568	\$56,098	\$36,071	\$60,375	\$36,905	\$61,802	\$36,905	\$61,802
41	Manatee	\$38,517	\$61,450	\$39,555	\$66,700	\$41,966	\$71,550	\$44,376	\$75,100
42	Marion	\$35,070	\$53,470	\$37,370	\$56,530	\$39,170	\$59,900	\$40,970	\$64,180
43	Martin	\$37,000	\$57,237	\$39,220	\$60,672	\$41,573	\$64,312	\$43,926	\$67,952
44	Monroe	\$42,330	\$70,264	\$44,088	\$76,555	\$45,036	\$78,473	\$45,577	\$80,184
45	Nassau	\$36,500	\$57,000	\$39,500	\$60,000	\$39,700	\$60,200	\$39,900	\$60,400
46	Okaloosa	\$32,428	\$64,036	\$34,212	\$67,454	\$35,833	\$70,561	\$37,455	\$73,667
47	Okeechobee	\$34,000	\$54,860	\$36,300	\$57,160	\$37,300	\$58,160	\$38,300	\$59,160
48	Orange	\$37,000	\$62,003	\$39,605	\$64,608	\$40,993	\$65,996	\$42,267	\$67,270
49	Osceola	\$37,500	\$60,000	\$40,185	\$62,685	\$41,685	\$64,185	\$43,185	\$65,685
50	Palm Beach	\$36,822	\$71,245	\$39,822	\$74,245	\$41,322	\$75,745	\$42,822	\$77,245
51	Pasco	\$36,420	\$58,470	\$39,120	\$61,170	\$40,820	\$62,870	\$41,820	\$63,870
52	Pinellas	\$37,010	\$59,580	\$39,190	\$61,760	\$40,360	\$62,930	\$41,510	\$64,080
53	Polk	\$35,000	\$55,175	\$37,181	\$57,356	\$37,899	\$58,074	\$38,220	\$58,395
54	Putnam	\$36,251	\$55,365	\$38,397	\$60,011	\$39,397	\$61,011	\$40,297	\$61,911
55	St. Johns	\$38,000	\$53,700	\$40,650	\$56,550	\$41,650	\$57,550	\$42,650	\$58,750
56	St. Lucie	\$35,356	\$59,717	\$38,621	\$62,921	\$41,014	\$65,435	\$42,092	\$66,565
57	Santa Rosa	\$32,092	\$59,181	\$34,575	\$61,664	\$35,817	\$62,906	\$37,059	\$64,148
58	Sarasota	\$38,530	\$52,068	\$41,747	\$65,126	\$44,604	\$72,706	\$46,510	\$75,811
59	Seminole	\$36,000	\$64,884	\$40,136	\$68,946	\$43,586	\$72,386	\$47,041	\$75,818
60	Sumter	\$37,194	\$59,577	\$39,658	\$62,109	\$40,892	\$63,375	\$40,892	\$63,375
61	Suwannee	\$32,473	\$54,067	\$34,783	\$56,377	\$35,308	\$56,902	\$36,223	\$57,817
62	Taylor	\$30,000	\$50,826	\$33,226	\$56,607	\$36,896	\$60,133	\$39,673	\$62,677
63	Union	\$33,250	\$50,677	\$34,750	\$53,272	\$35,250	\$55,055	\$36,050	\$56,038
64	Volusia	\$34,010	\$59,147	\$37,001	\$63,572	\$38,424	\$65,536	\$39,903	\$67,393
65	Wakulla	\$33,500	\$52,500	\$35,700	\$54,700	\$36,200	\$55,200	\$36,700	\$55,700
66	Walton	\$34,700	\$61,205	\$36,400	\$62,930	\$37,900	\$64,405	\$39,500	\$66,005
67	Washington	\$32,085	\$50,715	\$33,120	\$53,820	\$34,155	\$54,855	\$35,190	\$55,890
	Florida	\$34,686	\$56,020	\$37,080	\$59,188	\$38,401	\$60,836	\$39,566	\$62,241

* According to districts' negotiated instructional/teacher salary schedules

Table 7: Median Teacher Salaries by Degree Level, 2009-10*

District Number	District Name	Bachelor's	Master's	Specialist	Doctorate	Total
1	Alachua	\$35,561	\$41,325	\$44,375	\$48,050	\$39,150
2	Baker	\$36,158	\$47,268		\$35,739	\$37,680
3	Bay	\$37,305	\$46,588	\$51,816	\$49,495	\$40,759
4	Bradford	\$33,668	\$37,281	\$38,872	\$36,667	\$35,226
5	Brevard	\$39,697	\$45,001	\$50,769	\$47,942	\$42,334
6	Broward	\$41,502	\$45,747	\$45,873	\$51,926	\$42,713
7	Calhoun	\$35,400	\$41,430	\$46,670	\$45,710	\$37,760
8	Charlotte	\$41,356	\$51,533	\$56,221	\$55,108	\$46,430
9	Citrus	\$38,070	\$54,079	\$53,539	\$56,521	\$42,760
10	Clay	\$41,300	\$44,495	\$55,700	\$48,325	\$42,653
11	Collier	\$44,713	\$61,646	\$66,836	\$68,688	\$51,083
12	Columbia	\$34,560	\$45,730	\$43,780	\$48,080	\$38,730
13	Dade	\$39,564	\$50,102	\$59,502	\$61,552	\$44,306
14	DeSoto	\$37,213	\$46,042	\$60,282	\$37,738	\$38,304
15	Dixie	\$38,062	\$43,508			\$39,569
16	Duval	\$39,015	\$44,744	\$47,058	\$45,974	\$40,505
17	Escambia	\$39,238	\$45,287	\$48,683	\$45,388	\$39,238
18	Flagler	\$42,907	\$49,154	\$52,922	\$51,904	\$45,305
19	Franklin	\$36,926	\$44,750	\$45,564	\$50,808	\$41,633
20	Gadsden	\$31,615	\$34,579	\$48,026	\$34,333	\$32,896
21	Gilchrist	\$42,175	\$48,039	\$36,104		\$43,810
22	Glades	\$42,087	\$47,860	\$46,020	\$63,000	\$42,512
23	Gulf	\$36,444	\$42,351	\$48,376		\$39,103
24	Hamilton	\$39,933	\$42,433		\$36,829	\$41,009
25	Hardee	\$39,347	\$44,365	\$43,581		\$40,256
26	Hendry	\$37,260	\$44,020	\$54,500	\$46,996	\$39,336
27	Hernando	\$37,416	\$43,025	\$43,167	\$42,500	\$39,897
28	Highlands	\$39,849	\$54,461	\$52,500	\$49,800	\$42,474
29	Hillsborough	\$40,163	\$45,666	\$52,908	\$51,084	\$42,879
30	Holmes	\$37,500	\$48,020	\$39,003		\$42,175
31	Indian River	\$40,846	\$48,873	\$56,660	\$48,148	\$43,730
32	Jackson	\$35,447	\$46,113	\$55,346	\$57,293	\$39,974
33	Jefferson	\$34,913	\$41,344	\$53,616		\$39,375
34	Lafayette	\$38,561	\$43,050	\$46,439	\$45,573	\$40,850
35	Lake	\$37,061	\$41,147		\$44,225	\$38,857
36	Lee	\$39,128	\$47,799	\$51,284	\$49,261	\$42,524
37	Leon	\$36,664	\$42,299	\$43,679	\$54,119	\$38,960
38	Levy	\$42,563	\$45,581	\$48,769	\$35,426	\$42,926
39	Liberty	\$33,618	\$42,096	\$37,918	\$54,815	\$37,784
40	Madison	\$36,907	\$42,436	\$43,426		\$37,777
41	Manatee	\$40,386	\$49,664	\$58,921	\$56,911	\$46,244
42	Marion	\$37,383	\$45,673	\$55,996	\$51,070	\$39,770
43	Martin	\$42,630	\$46,321	\$61,229	\$49,275	\$44,554
44	Monroe	\$49,188	\$59,103	\$48,400	\$54,636	\$52,374
45	Nassau	\$38,650	\$47,947	\$44,412	\$46,920	\$42,500
46	Okaloosa	\$44,855	\$58,535	\$62,834	\$73,667	\$49,602
47	Okeechobee	\$39,545	\$48,295	\$58,160	\$39,566	\$40,554
48	Orange	\$39,109	\$44,325	\$46,193	\$48,267	\$41,405
49	Osceola	\$39,286	\$44,985	\$46,540	\$50,035	\$41,721
50	Palm Beach	\$42,518	\$48,190	\$56,618	\$52,411	\$43,595
51	Pasco	\$38,466	\$44,839	\$46,470	\$48,270	\$41,059
52	Pinellas	\$40,998	\$45,371	\$49,071	\$47,780	\$42,031
53	Polk	\$38,116	\$44,651	\$57,555	\$45,451	\$39,293
54	Putnam	\$42,656	\$50,397	\$51,397	\$43,160	\$43,341
55	St. Johns	\$41,720	\$46,470	\$53,150	\$47,400	\$43,319
56	St. Lucie	\$35,920	\$44,718	\$52,315	\$51,513	\$38,814
57	Santa Rosa	\$40,786	\$48,271	\$53,883	\$50,755	\$43,729
58	Sarasota	\$44,598	\$58,458	\$73,369	\$62,674	\$55,396
59	Seminole	\$39,800	\$47,834	\$57,571	\$63,087	\$44,369
60	Sumter	\$40,913	\$49,840	\$47,562		\$43,893
61	Suwannee	\$41,642	\$50,867	\$56,254	\$38,800	\$43,952
62	Taylor	\$33,120	\$44,843	\$53,342	\$44,904	\$37,289
63	Union	\$34,515	\$39,825	\$41,220	\$36,050	\$35,765
64	Volusia	\$38,312	\$46,717	\$52,642	\$53,333	\$42,016
65	Wakulla	\$34,750	\$42,200	\$40,700		\$37,361
66	Walton	\$40,470	\$50,720	\$44,330	\$50,820	\$44,040
67	Washington	\$39,330	\$49,680	\$50,715		\$42,435
	Districts 1-67	\$39,877	\$46,056	\$55,195	\$53,746	\$42,630
68	School for Deaf/Blind	\$38,800	\$42,600			\$40,400
69	Dozier/Okeechobee	\$53,229	\$51,898	\$52,031		\$53,229
72	FAU Lab School	\$35,702	\$41,119	\$77,399		\$38,619
73	FSU Charter	\$34,500	\$37,373	\$32,600		\$32,600
74	FAMU Lab School	\$34,098	\$34,097	\$37,169		\$34,100
75	UF Lab School	\$32,702	\$35,817	\$43,157	\$36,462	\$35,817
	Florida	\$39,873	\$45,966	\$55,129	\$53,746	\$42,598

* Survey 3, February 8-12, 2010, as of August 13, 2010

Table 8: Comparison of Average Teacher Salaries, 2005-06 through 2009-10*

District Number	District Name	2005-06	2006-07	2007-08	2008-09	2009-10
1	Alachua	\$37,633	\$40,181	\$41,784	\$41,316	\$41,721
2	Baker	\$38,200	\$40,518	\$42,765	\$42,612	\$42,367
3	Bay	\$39,605	\$41,679	\$41,756	\$43,678	\$43,152
4	Bradford	\$37,431	\$39,389	\$40,427	\$39,620	\$39,287
5	Brevard	\$41,141	\$43,963	\$45,486	\$45,287	\$45,052
6	Broward	\$45,348	\$47,962	\$50,294	\$50,722	\$50,423
7	Calhoun	\$38,456	\$40,251	\$40,315	\$40,539	\$39,726
8	Charlotte	\$44,325	\$46,319	\$48,289	\$48,069	\$47,875
9	Citrus	\$40,954	\$42,700	\$44,419	\$45,033	\$44,768
10	Clay	\$39,504	\$42,398	\$44,528	\$45,500	\$45,733
11	Collier	\$47,800	\$50,804	\$51,902	\$52,710	\$53,571
12	Columbia	\$40,407	\$42,000	\$42,947	\$42,632	\$41,257
13	Dade	\$47,471	\$49,191	\$50,737	\$49,555	\$50,749
14	DeSoto	\$39,685	\$42,053	\$44,025	\$43,057	\$41,972
15	Dixie	\$39,121	\$41,345	\$41,169	\$40,775	\$41,101
16	Duval	\$42,668	\$45,014	\$46,896	\$47,087	\$46,676
17	Escambia	\$37,402	\$39,075	\$41,551	\$41,430	\$42,346
18	Flagler	\$44,156	\$46,871	\$48,366	\$48,056	\$48,606
19	Franklin	\$38,170	\$37,981	\$39,008	\$43,051	\$42,077
20	Gadsden	\$33,651	\$35,842	\$37,051	\$35,775	\$35,628
21	Gilchrist	\$36,158	\$39,892	\$42,780	\$43,180	\$44,259
22	Glades	\$39,963	\$41,447	\$43,872	\$45,099	\$44,121
23	Gulf	\$39,188	\$41,204	\$41,044	\$41,125	\$41,133
24	Hamilton	\$40,407	\$42,349	\$43,369	\$43,143	\$42,424
25	Hardee	\$39,401	\$40,261	\$43,232	\$43,370	\$42,665
26	Hendry	\$41,188	\$41,667	\$42,983	\$43,424	\$42,092
27	Hernando	\$36,733	\$39,089	\$40,753	\$41,795	\$42,398
28	Highlands	\$40,055	\$41,876	\$43,811	\$44,651	\$44,017
29	Hillsborough	\$39,589	\$43,412	\$46,489	\$46,421	\$45,735
30	Holmes	\$37,318	\$39,622	\$41,459	\$41,290	\$41,609
31	Indian River	\$40,756	\$43,162	\$44,853	\$45,030	\$46,356
32	Jackson	\$37,496	\$39,306	\$41,235	\$41,246	\$41,303
33	Jefferson	\$38,275	\$41,770	\$43,801	\$43,647	\$41,811
34	Lafayette	\$35,766	\$37,461	\$41,111	\$41,917	\$41,654
35	Lake	\$39,851	\$41,397	\$42,334	\$42,478	\$41,821
36	Lee	\$42,389	\$44,706	\$45,382	\$47,012	\$45,862
37	Leon	\$41,269	\$43,412	\$44,213	\$43,832	\$42,829
38	Levy	\$40,011	\$41,780	\$43,137	\$43,236	\$43,451
39	Liberty	\$36,927	\$39,191	\$39,812	\$39,327	\$39,766
40	Madison	\$38,870	\$40,823	\$42,038	\$41,591	\$41,634
41	Manatee	\$44,440	\$47,480	\$49,496	\$48,810	\$48,463
42	Marion	\$39,759	\$42,068	\$41,587	\$43,237	\$43,289
43	Martin	\$43,585	\$45,646	\$45,272	\$47,102	\$46,455
44	Monroe	\$48,422	\$50,775	\$54,083	\$56,272	\$56,674
45	Nassau	\$41,815	\$43,787	\$44,999	\$45,059	\$45,192
46	Okaloosa	\$44,758	\$47,538	\$50,093	\$51,446	\$51,598
47	Okeechobee	\$40,243	\$41,809	\$42,828	\$43,228	\$44,099
48	Orange	\$41,246	\$44,288	\$45,477	\$45,494	\$44,884
49	Osceola	\$40,418	\$42,851	\$44,519	\$44,639	\$45,070
50	Palm Beach	\$43,639	\$48,529	\$49,946	\$50,178	\$48,537
51	Pasco	\$40,939	\$43,472	\$44,310	\$43,901	\$43,474
52	Pinellas	\$43,916	\$45,679	\$47,269	\$46,839	\$45,851
53	Polk	\$39,875	\$41,505	\$43,325	\$43,080	\$42,761
54	Putnam	\$41,745	\$43,981	\$46,409	\$47,291	\$46,013
55	St. Johns	\$42,758	\$45,032	\$47,413	\$47,102	\$46,370
56	St. Lucie	\$42,097	\$43,399	\$44,179	\$44,066	\$43,010
57	Santa Rosa	\$41,007	\$43,196	\$44,180	\$44,685	\$45,557
58	Sarasota	\$49,342	\$52,348	\$53,809	\$55,213	\$55,886
59	Seminole	\$41,826	\$46,475	\$48,779	\$48,446	\$48,868
60	Sumter	\$42,496	\$45,508	\$46,709	\$47,470	\$47,410
61	Suwannee	\$42,399	\$43,721	\$43,715	\$45,669	\$45,396
62	Taylor	\$39,243	\$42,111	\$41,859	\$41,077	\$40,938
63	Union	\$33,895	\$35,489	\$37,369	\$38,848	\$38,763
64	Volusia	\$41,186	\$43,485	\$45,325	\$45,529	\$45,464
65	Wakulla	\$38,696	\$40,857	\$41,418	\$40,872	\$40,512
66	Walton	\$41,550	\$45,121	\$46,953	\$46,969	\$46,443
67	Washington	\$40,913	\$42,324	\$43,055	\$42,909	\$42,516
	Districts 1-67	\$42,705	\$45,307	\$46,930	\$46,950	\$46,708
68	School for Deaf/Blind	\$42,617	\$44,878	\$43,950	\$44,057	\$43,309
69	Dozier/Okeechobee	\$50,264	\$53,339	\$52,783	\$52,066	\$53,597
72	FAU Lab School	\$43,495	\$43,984	\$44,976	\$42,455	\$41,877
73	FSU Charter	\$31,111	\$33,194	\$33,446	\$33,193	\$34,824
74	FAMU Lab School	\$34,031	\$34,843	\$34,905	\$36,881	\$32,972
75	UF Lab School	\$37,955	\$36,756	\$38,239	\$38,676	\$39,420
	Florida	\$42,702	\$45,296	\$46,922	\$46,938	\$46,696

* Survey 3, February 8-12, 2010, as of August 13, 2010

Table 9: Percent Change in Average Teacher Salaries, 2008-09 to 2009-10*

District Number	District Name	2008-09	2009-10	Percent Change 2008-09 to 2009-10
1	Alachua	\$41,316	\$41,721	0.98%
2	Baker	\$42,612	\$42,367	-0.57%
3	Bay	\$43,678	\$43,152	-1.20%
4	Bradford	\$39,620	\$39,287	-0.84%
5	Brevard	\$45,287	\$45,052	-0.52%
6	Broward	\$50,722	\$50,423	-0.59%
7	Calhoun	\$40,539	\$39,726	-2.01%
8	Charlotte	\$48,069	\$47,875	-0.40%
9	Citrus	\$45,033	\$44,768	-0.59%
10	Clay	\$45,500	\$45,733	0.51%
11	Collier	\$52,710	\$53,571	1.63%
12	Columbia	\$42,632	\$41,257	-3.23%
13	Dade	\$49,555	\$50,749	2.41%
14	DeSoto	\$43,057	\$41,972	-2.52%
15	Dixie	\$40,775	\$41,101	0.80%
16	Duval	\$47,087	\$46,676	-0.87%
17	Escambia	\$41,430	\$42,346	2.21%
18	Flagler	\$48,056	\$48,606	1.14%
19	Franklin	\$43,051	\$42,077	-2.26%
20	Gadsden	\$35,775	\$35,628	-0.41%
21	Gilchrist	\$43,180	\$44,259	2.50%
22	Glades	\$45,099	\$44,121	-2.17%
23	Gulf	\$41,125	\$41,133	0.02%
24	Hamilton	\$43,143	\$42,424	-1.67%
25	Hardee	\$43,370	\$42,665	-1.63%
26	Hendry	\$43,424	\$42,092	-3.07%
27	Hernando	\$41,795	\$42,398	1.44%
28	Highlands	\$44,651	\$44,017	-1.42%
29	Hillsborough	\$46,421	\$45,735	-1.48%
30	Holmes	\$41,290	\$41,609	0.77%
31	Indian River	\$45,030	\$46,356	2.94%
32	Jackson	\$41,246	\$41,303	0.14%
33	Jefferson	\$43,647	\$41,811	-4.21%
34	Lafayette	\$41,917	\$41,654	-0.63%
35	Lake	\$42,478	\$41,821	-1.55%
36	Lee	\$47,012	\$45,862	-2.45%
37	Leon	\$43,832	\$42,829	-2.29%
38	Levy	\$43,236	\$43,451	0.50%
39	Liberty	\$39,327	\$39,766	1.12%
40	Madison	\$41,591	\$41,634	0.10%
41	Manatee	\$48,810	\$48,463	-0.71%
42	Marion	\$43,237	\$43,289	0.12%
43	Martin	\$47,102	\$46,455	-1.37%
44	Monroe	\$56,272	\$56,674	0.71%
45	Nassau	\$45,059	\$45,192	0.30%
46	Okaloosa	\$51,446	\$51,598	0.30%
47	Okeechobee	\$43,228	\$44,099	2.01%
48	Orange	\$45,494	\$44,884	-1.34%
49	Osceola	\$44,639	\$45,070	0.97%
50	Palm Beach	\$50,178	\$48,537	-3.27%
51	Pasco	\$43,901	\$43,474	-0.97%
52	Pinellas	\$46,839	\$45,851	-2.11%
53	Polk	\$43,080	\$42,761	-0.74%
54	Putnam	\$47,291	\$46,013	-2.70%
55	St. Johns	\$47,102	\$46,370	-1.55%
56	St. Lucie	\$44,066	\$43,010	-2.40%
57	Santa Rosa	\$44,685	\$45,557	1.95%
58	Sarasota	\$55,213	\$55,886	1.22%
59	Seminole	\$48,446	\$48,868	0.87%
60	Sumter	\$47,470	\$47,410	-0.13%
61	Suwannee	\$45,669	\$45,396	-0.60%
62	Taylor	\$41,077	\$40,938	-0.34%
63	Union	\$38,848	\$38,763	-0.22%
64	Volusia	\$45,529	\$45,464	-0.14%
65	Wakulla	\$40,872	\$40,512	-0.88%
66	Walton	\$46,969	\$46,443	-1.12%
67	Washington	\$42,909	\$42,516	-0.92%
	Districts 1-67	\$46,950	\$46,708	-0.52%
68	School for Deaf/Blind	\$44,057	\$43,309	-1.70%
69	Dozier/Okeechobee	\$52,066	\$53,597	2.94%
72	FAU Lab School	\$42,455	\$41,877	-1.36%
73	FSU Charter	\$33,193	\$34,824	4.91%
74	FAMU Lab School	\$36,881	\$32,972	-10.60%
75	UF Lab School	\$38,676	\$39,420	1.92%
	Florida	\$46,938	\$46,696	-0.52%

* Survey 3, February 8-12, 2010, as of August 13, 2010

Table 10: Average Teacher Salaries in Rank Order, 2009-10*

District Number	District Name	Average Salary	Rank
44	MONROE	\$56,674	1
58	SARASOTA	\$55,886	2
11	COLLIER	\$53,571	3
46	OKALOOSA	\$51,598	4
13	DADE	\$50,749	5
6	BROWARD	\$50,423	6
59	SEMINOLE	\$48,868	7
18	FLAGLER	\$48,606	8
50	PALM BEACH	\$48,537	9
41	MANATEE	\$48,463	10
8	CHARLOTTE	\$47,875	11
60	SUMTER	\$47,410	12
	FLORIDA	\$46,696	
16	DUVAL	\$46,676	13
43	MARTIN	\$46,455	14
66	WALTON	\$46,443	15
55	ST. JOHNS	\$46,370	16
31	INDIAN RIVER	\$46,356	17
54	PUTNAM	\$46,013	18
36	LEE	\$45,862	19
52	PINELLAS	\$45,851	20
29	HILLSBOROUGH	\$45,735	21
10	CLAY	\$45,733	22
57	SANTA ROSA	\$45,557	23
64	VOLUSIA	\$45,464	24
61	SUWANNEE	\$45,396	25
45	NASSAU	\$45,192	26
49	OSCEOLA	\$45,070	27
5	BREVARD	\$45,052	28
48	ORANGE	\$44,884	29
9	CITRUS	\$44,768	30
21	GILCHRIST	\$44,259	31
22	GLADES	\$44,121	32
47	OKEECHOBEE	\$44,099	33
28	HIGHLANDS	\$44,017	34
51	PASCO	\$43,474	35
38	LEVY	\$43,451	36
42	MARION	\$43,289	37
3	BAY	\$43,152	38
56	ST. LUCIE	\$43,010	39
37	LEON	\$42,829	40
53	POLK	\$42,761	41
25	HARDEE	\$42,665	42
67	WASHINGTON	\$42,516	43
24	HAMILTON	\$42,424	44
27	HERNANDO	\$42,398	45
2	BAKER	\$42,367	46
17	ESCAMBIA	\$42,346	47
26	HENDRY	\$42,092	48
19	FRANKLIN	\$42,077	49
14	DESOTO	\$41,972	50
35	LAKE	\$41,821	51
33	JEFFERSON	\$41,811	52
1	ALACHUA	\$41,721	53
34	LAFAYETTE	\$41,654	54
40	MADISON	\$41,634	55
30	HOLMES	\$41,609	56
32	JACKSON	\$41,303	57
12	COLUMBIA	\$41,257	58
23	GULF	\$41,133	59
15	DIXIE	\$41,101	60
62	TAYLOR	\$40,938	61
65	WAKULLA	\$40,512	62
39	LIBERTY	\$39,766	63
7	CALHOUN	\$39,726	64
4	BRADFORD	\$39,287	65
63	UNION	\$38,763	66
20	GADSDEN	\$35,628	67

* Survey 3, February 8-12, 2010, as of August 13, 2010