

Data Report

Series 2010-02D

July 2009

Teacher Salary, Experience, and Degree Level, 2008-09

Table 1: Teachers' Average Years of Experience by Degree Level, 2008-09

Table 2: Teachers by Degree Level, 2006-07 through 2008-09

Table 3: Average Teacher Salaries by Degree Level, 2008-09

Table 4: Teachers by Degree Level, 2008-09

Table 5: Teachers' Average Years of Experience by Degree Level, 2008-09

Table 6: Minimum/Maximum Teacher Salaries by Degree Level, 2008-09

Table 7: Median Teacher Salaries by Degree Level, 2008-09

Table 8: Comparison of Average Teacher Salaries, 2004-05 through 2008-09

Table 9: Percent Change in Average Teacher Salaries, 2007-08 to 2008-09

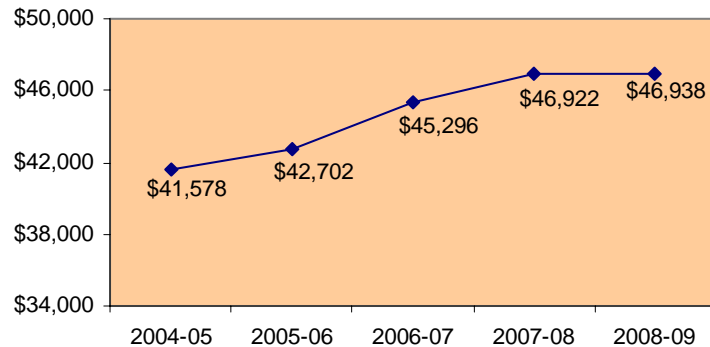
Table 10: Average Teacher Salaries in Rank Order, 2008-09

Average Salaries

The average salary paid to a Florida public school teacher in the 2008-09 school year was \$46,938. This represents an increase of \$16 (0.03 percent) over the average salary of \$46,922 for the 2007-08 school year.

Figure 1 displays the average teacher salaries in Florida public schools from 2004-05 through 2008-09. The average teacher salary increased by \$5,360 since 2004-05, which represents an increase of 12.89 percent.

**Figure 1: Average Teacher* Salary
2004-05 through 2008-09****



*A professional paid on the instructional salary schedule negotiated by a Florida school district.

**Data Source: Florida DOE Staff Database, Survey 3, February 9-13, 2009, as of March 31, 2009



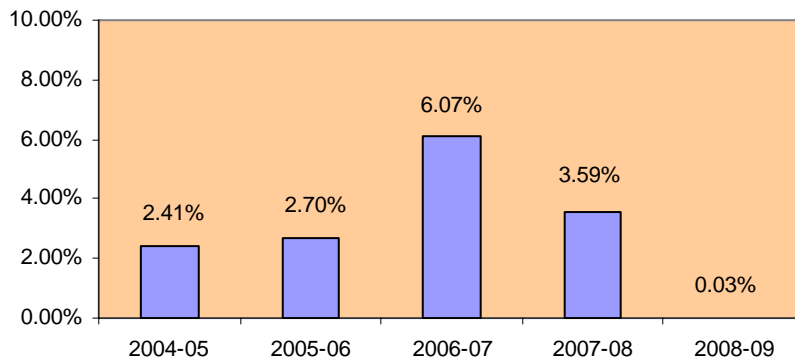
Florida Department of Education
Eric J. Smith, Commissioner

Cautionary Note

In Florida, each public school district, after collective bargaining activities, adopts a salary schedule for instructional personnel in that district. In some school districts, a salary schedule for the school year is negotiated and adopted after the collection of salary data for that school year by the Department of Education (DOE). In many of these districts, the final negotiated salary schedule provides retroactive pay to instructional personnel for the entire school year. When this happens, the salary information on the DOE Staff Database does not reflect the subsequent salary increase for that district. Users of teacher salary data are advised to be aware of this and other factors affecting the data when making judgments and drawing conclusions based on these data.

Figure 2 shows the percent increase in average teacher salaries for the past five years. The highest percent increase over the previous year occurred in 2006-07 at 6.07 percent. In 2008-09 the average teacher salary increased by 0.03 percent.

**Figure 2: Percent Increase in Average Teacher Salary
2004-05 through 2008-09***



Experience

For all degree levels, Florida teachers currently average 12.13 years of teaching experience, as shown in Table 1 below. The average number of years of experience includes both public and private teaching experience from within and outside the state. Since teachers' average number of years of experience greatly impacts the average salary for teachers, this factor should be taken into consideration when comparing average teacher salaries of the districts.

**Table 1: Teachers' Average Years of Experience
by Degree Level, 2008-09***

Bachelor's	10.12
Master's	14.93
Specialist	17.45
Doctorate	15.35
All Degrees	12.13

Degree Level

Table 2 below displays the number and percent of teachers at each degree level for school years 2006-07 through 2008-09. Although the number of teachers has steadily increased during this time, the proportion of teachers at each degree level has remained consistent.

Table 2: Teachers by Degree Level, 2006-07 through 2008-09*

	<u>2006-07</u>		<u>2007-08</u>		<u>2008-09</u>	
	<u>Number</u>	<u>Percent</u>	<u>Number</u>	<u>Percent</u>	<u>Number</u>	<u>Percent</u>
Bachelor's	111,980	60.91	113,774	60.74	109,789	59.69
Master's	65,077	35.40	66,298	35.39	66,757	36.30
Specialist	4,421	2.40	4,769	2.55	4,901	2.66
Doctorate	2,358	1.28	2,475	1.32	2,478	1.35
All Degrees	183,836	100.00	187,316	100.00	183,925	100.00

District-level information on teacher salaries, experience, and degree level is displayed in Table 3 through Table 8 on the following pages.

* Survey 3, February 9-13, 2009, as of March 31, 2009

Table 3: Average Teacher Salaries by Degree Level, 2008-09*

District	District	Bachelor's		Master's		Specialist		Doctorate		Total	
Number	Name	Number	Salary	Number	Salary	Number	Salary	Number	Salary	Number	Salary
1	Alachua	895	38,228	912	43,217	109	47,591	49	48,372	1,965	41,316
2	Baker	255	40,711	66	49,656	0	0	1	62,530	322	42,612
3	Bay	1,173	40,758	655	48,152	53	50,591	20	50,056	1,901	43,678
4	Bradford	199	38,002	60	44,589	4	46,822	2	37,167	265	39,620
5	Brevard	3,041	42,761	1,940	48,836	54	54,134	54	51,220	5,089	45,287
6	Broward	9,050	48,149	6,700	53,573	426	55,216	271	59,080	16,447	50,722
7	Calhoun	115	38,078	67	44,367	0	0	4	47,150	186	40,539
8	Charlotte	613	43,932	544	52,078	21	58,317	16	56,789	1,194	48,069
9	Citrus	698	41,507	477	49,736	22	49,553	11	55,750	1,208	45,033
10	Clay	2,015	43,922	799	49,135	13	64,832	13	47,395	2,840	45,500
11	Collier	1,534	47,489	1,370	57,714	61	63,215	56	61,895	3,021	52,710
12	Columbia	734	42,608	1	54,433	3	44,448	0	0	738	42,632
13	Dade	11,021	44,645	8,554	52,610	2,128	59,864	570	60,149	22,273	49,555
14	DeSoto	252	41,658	81	47,015	3	57,657	4	40,129	340	43,057
15	Dixie	93	38,835	45	44,785	0	0	0	0	138	40,775
16	Duval	5,813	44,636	2,579	52,138	64	56,953	93	53,388	8,549	47,087
17	Escambia	1,871	38,683	1,212	45,203	54	49,169	30	46,338	3,167	41,430
18	Flagler	523	45,142	303	52,752	11	54,229	3	58,978	840	48,056
19	Franklin	42	38,609	36	46,855	3	53,694	1	60,773	82	43,051
20	Gadsden	325	34,874	152	37,426	5	45,299	5	34,576	487	35,775
21	Gilchrist	121	41,564	65	45,880	4	45,340	1	54,440	191	43,180
22	Glades	85	42,759	27	51,160	1	60,600	3	51,680	116	45,099
23	Gulf	98	38,912	59	44,449	2	51,475	0	0	159	41,125
24	Hamilton	116	42,706	25	44,751	0	0	1	53,620	142	43,143
25	Hardee	370	43,248	4	53,284	2	46,167	0	0	376	43,370
26	Hendry	322	41,217	137	47,873	5	54,601	4	54,765	468	43,424
27	Hernando	1,182	39,996	521	45,622	10	43,124	15	49,815	1,728	41,795
28	Highlands	647	42,251	251	50,392	7	53,040	10	49,964	915	44,651
29	Hillsborough	8,948	43,437	5,384	50,404	286	57,762	210	56,048	14,828	46,421
30	Holmes	172	38,535	84	46,749	4	45,125	0	0	260	41,290
31	Indian River	776	42,862	363	48,087	56	55,193	11	45,286	1,206	45,030
32	Jackson	360	37,826	215	45,140	33	52,707	1	57,293	609	41,246
33	Jefferson	66	42,098	22	47,258	2	55,027	0	0	90	43,647
34	Lafayette	60	40,736	16	45,823	2	44,350	1	45,371	79	41,917
35	Lake	1,862	40,674	1,030	45,605	1	48,188	22	48,418	2,915	42,478
36	Lee	3,414	44,130	1,763	51,958	76	55,902	75	52,968	5,328	47,012
37	Leon	1,294	40,922	946	47,170	65	48,608	32	53,116	2,337	43,832
38	Levy	267	41,482	151	46,009	9	48,923	1	41,907	428	43,236
39	Liberty	83	37,078	45	43,809	6	36,817	0	0	134	39,327
40	Madison	133	38,777	53	47,810	5	50,549	0	0	191	41,591
41	Manatee	1,432	44,985	1,166	52,554	57	59,236	49	59,350	2,704	48,810
42	Marion	1,913	41,088	911	46,758	68	52,657	31	51,654	2,923	43,237
43	Martin	726	44,586	452	50,280	24	57,814	17	54,919	1,219	47,102
44	Monroe	360	52,481	260	60,837	7	75,215	8	61,945	635	56,272
45	Nassau	437	42,133	275	49,628	4	45,963	5	48,840	721	45,059
46	Okaloosa	1,066	47,449	733	55,829	49	62,996	24	71,513	1,872	51,446
47	Okeechobee	376	41,609	91	48,935	8	54,564	1	41,802	476	43,228
48	Orange	7,600	42,999	4,637	49,084	177	51,842	144	53,807	12,558	45,494
49	Osceola	2,014	41,995	1,139	48,770	73	49,178	31	53,935	3,257	44,639
50	Palm Beach	7,532	46,719	4,124	55,873	109	61,323	121	61,335	11,886	50,178
51	Pasco	3,161	41,558	1,785	47,725	57	49,293	42	50,478	5,045	43,901
52	Pinellas	5,028	44,711	2,996	49,921	124	54,286	77	53,884	8,225	46,839
53	Polk	5,325	41,177	1,823	47,942	69	55,186	58	50,501	7,275	43,080
54	Putnam	526	44,471	241	52,987	11	55,261	5	51,907	783	47,291
55	St. Johns	1,048	44,623	702	50,537	14	56,964	9	52,654	1,773	47,102
56	St. Lucie	1,719	41,024	886	48,885	47	56,256	37	54,482	2,689	44,066
57	Santa Rosa	1,144	42,216	611	49,020	20	49,601	13	50,657	1,788	44,685
58	Sarasota	1,111	47,984	1,672	58,899	81	73,461	48	63,373	2,912	55,213
59	Seminole	2,285	44,053	1,833	52,444	128	58,620	88	64,454	4,334	48,446
60	Sumter	259	44,953	113	52,971	2	62,655	0	0	374	47,470
61	Suwannee	271	43,830	104	50,263	3	54,741	2	42,364	380	45,669
62	Taylor	141	36,884	64	48,079	14	50,109	2	49,381	221	41,077
63	Union	117	37,332	53	42,158	1	41,220	2	38,642	173	38,848
64	Volusia	2,521	41,963	1,780	49,684	100	56,286	53	55,271	4,454	45,529
65	Wakulla	226	38,445	113	45,476	8	44,755	1	38,199	348	40,872
66	Walton	384	44,633	176	51,495	12	52,139	11	50,446	583	46,969
67	Washington	200	39,851	91	48,784	8	52,526	0	0	299	42,909
	Districts 1-67	109,560	43,755	66,545	51,086	4,885	57,328	2,469	56,725	183,459	46,950
68	School for Deaf/Blind	61	41,230	69	46,557	0	0	0	0	130	44,057
69	Dozier/Okeechobee	18	50,955	12	54,411	2	47,994	0	0	32	52,066
72	FAU Lab School	86	38,893	51	46,465	4	67,901	0	0	141	42,455
73	FSU Charter	1	29,300	2	35,436	1	32,599	0	0	4	33,193
74	FAMU Lab School	30	34,124	14	41,710	0	0	1	52,005	45	36,881
75	UF Lab School	33	34,089	64	38,489	9	51,314	8	44,873	114	38,676
	Florida	109,789	43,745	66,757	51,064	4,901	57,317	2,478	56,685	183,925	46,938

* Survey 3, February 9-13, 2009, as of March 31, 2009

Table 4: Teachers by Degree Level, 2008-09*

District	District	Bachelor's		Master's		Specialist		Doctorate		Total
Number	Name	Number	% of Total	Number	% of Total	Number	% of Total	Number	% of Total	Number
1	Alachua	895	45.55	912	46.41	109	5.55	49	2.49	1,965
2	Baker	255	79.19	66	20.50	0	0.00	1	0.31	322
3	Bay	1,173	61.70	655	34.46	53	2.79	20	1.05	1,901
4	Bradford	199	75.09	60	22.64	4	1.51	2	0.75	265
5	Brevard	3,041	59.76	1,940	38.12	54	1.06	54	1.06	5,089
6	Broward	9,050	55.03	6,700	40.74	426	2.59	271	1.65	16,447
7	Calhoun	115	61.83	67	36.02	0	0.00	4	2.15	186
8	Charlotte	613	51.34	544	45.56	21	1.76	16	1.34	1,194
9	Citrus	698	57.78	477	39.49	22	1.82	11	0.91	1,208
10	Clay	2,015	70.95	799	28.13	13	0.46	13	0.46	2,840
11	Collier	1,534	50.78	1,370	45.35	61	2.02	56	1.85	3,021
12	Columbia	734	99.46	1	0.14	3	0.41	0	0.00	738
13	Dade	11,021	49.48	8,554	38.41	2,128	9.55	570	2.56	22,273
14	DeSoto	252	74.12	81	23.82	3	0.88	4	1.18	340
15	Dixie	93	67.39	45	32.61	0	0.00	0	0.00	138
16	Duval	5,813	68.00	2,579	30.17	64	0.75	93	1.09	8,549
17	Escambia	1,871	59.08	1,212	38.27	54	1.71	30	0.95	3,167
18	Flagler	523	62.26	303	36.07	11	1.31	3	0.36	840
19	Franklin	42	51.22	36	43.90	3	3.66	1	1.22	82
20	Gadsden	325	66.74	152	31.21	5	1.03	5	1.03	487
21	Gilchrist	121	63.35	65	34.03	4	2.09	1	0.52	191
22	Glades	85	73.28	27	23.28	1	0.86	3	2.59	116
23	Gulf	98	61.64	59	37.11	2	1.26	0	0.00	159
24	Hamilton	116	81.69	25	17.61	0	0.00	1	0.70	142
25	Hardee	370	98.40	4	1.06	2	0.53	0	0.00	376
26	Hendry	322	68.80	137	29.27	5	1.07	4	0.85	468
27	Hernando	1,182	68.40	521	30.15	10	0.58	15	0.87	1,728
28	Highlands	647	70.71	251	27.43	7	0.77	10	1.09	915
29	Hillsborough	8,948	60.35	5,384	36.31	286	1.93	210	1.42	14,828
30	Holmes	172	66.15	84	32.31	4	1.54	0	0.00	260
31	Indian River	776	64.34	363	30.10	56	4.64	11	0.91	1,206
32	Jackson	360	59.11	215	35.30	33	5.42	1	0.16	609
33	Jefferson	66	73.33	22	24.44	2	2.22	0	0.00	90
34	Lafayette	60	75.95	16	20.25	2	2.53	1	1.27	79
35	Lake	1,862	63.88	1,030	35.33	1	0.03	22	0.75	2,915
36	Lee	3,414	64.08	1,763	33.09	76	1.43	75	1.41	5,328
37	Leon	1,294	55.37	946	40.48	65	2.78	32	1.37	2,337
38	Levy	267	62.38	151	35.28	9	2.10	1	0.23	428
39	Liberty	83	61.94	45	33.58	6	4.48	0	0.00	134
40	Madison	133	69.63	53	27.75	5	2.62	0	0.00	191
41	Manatee	1,432	52.96	1,166	43.12	57	2.11	49	1.81	2,704
42	Marion	1,913	65.45	911	31.17	68	2.33	31	1.06	2,923
43	Martin	726	59.56	452	37.08	24	1.97	17	1.39	1,219
44	Monroe	360	56.69	260	40.94	7	1.10	8	1.26	635
45	Nassau	437	60.61	275	38.14	4	0.55	5	0.69	721
46	Okaloosa	1,066	56.94	733	39.16	49	2.62	24	1.28	1,872
47	Okeechobee	376	78.99	91	19.12	8	1.68	1	0.21	476
48	Orange	7,600	60.52	4,637	36.92	177	1.41	144	1.15	12,558
49	Osceola	2,014	61.84	1,139	34.97	73	2.24	31	0.95	3,257
50	Palm Beach	7,532	63.37	4,124	34.70	109	0.92	121	1.02	11,886
51	Pasco	3,161	62.66	1,785	35.38	57	1.13	42	0.83	5,045
52	Pinellas	5,028	61.13	2,996	36.43	124	1.51	77	0.94	8,225
53	Polk	5,325	73.20	1,823	25.06	69	0.95	58	0.80	7,275
54	Putnam	526	67.18	241	30.78	11	1.40	5	0.64	783
55	St. Johns	1,048	59.11	702	39.59	14	0.79	9	0.51	1,773
56	St. Lucie	1,719	63.93	886	32.95	47	1.75	37	1.38	2,689
57	Santa Rosa	1,144	63.98	611	34.17	20	1.12	13	0.73	1,788
58	Sarasota	1,111	38.15	1,672	57.42	81	2.78	48	1.65	2,912
59	Seminole	2,285	52.72	1,833	42.29	128	2.95	88	2.03	4,334
60	Sumter	259	69.25	113	30.21	2	0.53	0	0.00	374
61	Suwannee	271	71.32	104	27.37	3	0.79	2	0.53	380
62	Taylor	141	63.80	64	28.96	14	6.33	2	0.90	221
63	Union	117	67.63	53	30.64	1	0.58	2	1.16	173
64	Volusia	2,521	56.60	1,780	39.96	100	2.25	53	1.19	4,454
65	Wakulla	226	64.94	113	32.47	8	2.30	1	0.29	348
66	Walton	384	65.87	176	30.19	12	2.06	11	1.89	583
67	Washington	200	66.89	91	30.43	8	2.68	0	0.00	299
	Districts 1-67	109,560	59.72	66,545	36.27	4,885	2.66	2,469	1.35	183,459
68	School for Deaf/Blind	61	46.92	69	53.08	0	0.00	0	0.00	130
69	Dozier/Okeechobee	18	56.25	12	37.50	2	6.25	0	0.00	32
72	FAU Lab School	86	60.99	51	36.17	4	2.84	0	0.00	141
73	FSU Charter	1	25.00	2	50.00	1	25.00	0	0.00	4
74	FAMU Lab School	30	66.67	14	31.11	0	0.00	1	2.22	45
75	UF Lab School	33	28.95	64	56.14	9	7.89	8	7.02	114
	Florida	109,789	59.69	66,757	36.30	4,901	2.66	2,478	1.35	183,925

* Survey 3, February 9-13, 2009, as of March 31, 2009

Table 5: Teachers' Average Years of Experience by Degree Level, 2008-09*

District Number	District Name	Bachelor's	Master's	Specialist	Doctorate	All Degrees
1	Alachua	11.72	15.75	18.84	17.63	14.13
2	Baker	10.25	18.13	0.00	25.00	11.93
3	Bay	14.26	17.41	19.05	18.52	15.57
4	Bradford	18.12	23.66	20.75	0.00	19.42
5	Brevard	11.75	16.26	21.29	16.90	13.63
6	Broward	10.93	15.58	16.50	16.92	13.07
7	Calhoun	10.81	16.64	0.00	11.00	12.91
8	Charlotte	11.56	18.40	20.52	22.37	14.98
9	Citrus	11.75	18.71	15.72	24.45	14.68
10	Clay	10.52	15.11	18.83	11.23	11.80
11	Collier	9.58	15.07	16.34	15.10	12.33
12	Columbia	13.80	5.00	2.00	0.00	13.77
13	Dade	8.72	14.12	18.20	15.24	11.86
14	DeSoto	10.70	15.45	16.66	13.75	11.92
15	Dixie	13.21	16.80	0.00	0.00	14.38
16	Duval	10.04	15.53	18.87	11.46	11.78
17	Escambia	7.55	11.83	16.90	12.39	9.47
18	Flagler	9.75	14.39	12.90	14.00	11.50
19	Franklin	10.35	16.88	16.00	31.00	13.68
20	Gadsden	10.12	15.22	14.60	4.80	11.71
21	Gilchrist	11.95	14.01	12.00	1.00	12.60
22	Glades	9.09	14.59	37.00	13.33	10.75
23	Gulf	12.84	17.30	28.50	0.00	14.69
24	Hamilton	11.56	9.58	0.00	35.00	11.37
25	Hardee	13.07	14.00	7.00	0.00	13.05
26	Hendry	6.87	9.39	16.00	15.00	8.11
27	Hernando	9.44	15.73	11.00	14.00	11.39
28	Highlands	11.77	18.72	18.71	18.70	13.81
29	Hillsborough	9.28	14.07	15.36	13.15	11.19
30	Holmes	10.81	19.25	11.00	0.00	13.54
31	Indian River	11.25	14.41	16.16	16.18	12.50
32	Jackson	9.31	16.54	21.66	25.00	12.55
33	Jefferson	10.57	15.95	14.00	0.00	11.96
34	Lafayette	12.03	13.37	10.50	11.00	12.25
35	Lake	9.96	14.16	13.00	13.00	11.47
36	Lee	9.96	16.25	18.92	16.28	12.26
37	Leon	11.43	16.93	17.96	18.80	13.94
38	Levy	12.76	15.66	19.44	8.00	13.91
39	Liberty	6.98	13.20	1.66	0.00	8.83
40	Madison	10.57	17.88	18.00	0.00	12.80
41	Manatee	10.03	13.86	17.59	13.26	11.93
42	Marion	11.83	16.48	19.89	16.38	13.52
43	Martin	10.18	12.49	13.79	9.11	11.09
44	Monroe	11.05	15.83	14.85	12.00	13.05
45	Nassau	9.18	14.40	7.75	10.60	11.17
46	Okaloosa	12.46	17.08	18.24	22.86	14.56
47	Okeechobee	11.33	18.05	24.37	5.00	12.84
48	Orange	10.19	14.37	16.61	15.62	11.91
49	Osceola	8.13	13.41	12.31	14.70	10.13
50	Palm Beach	7.13	11.21	11.88	11.88	8.63
51	Pasco	9.34	14.54	12.17	15.52	11.27
52	Pinellas	12.29	16.52	17.95	16.83	13.96
53	Polk	9.97	15.97	20.21	15.62	11.61
54	Putnam	12.08	18.27	13.54	15.00	14.02
55	St. Johns	9.86	13.28	9.64	11.88	11.22
56	St. Lucie	10.28	15.10	18.23	13.41	12.09
57	Santa Rosa	11.13	16.05	15.30	17.84	12.91
58	Sarasota	10.89	14.65	15.32	13.37	13.22
59	Seminole	11.84	16.66	18.19	20.92	14.26
60	Sumter	12.02	18.09	9.00	0.00	13.84
61	Suwannee	14.14	18.86	20.66	5.00	15.43
62	Taylor	6.58	14.85	13.64	13.00	9.48
63	Union	8.63	12.98	14.00	6.00	9.96
64	Volusia	11.96	16.77	20.96	18.83	14.16
65	Wakulla	10.45	17.84	12.50	7.00	12.88
66	Walton	8.79	11.93	9.25	7.27	9.72
67	Washington	9.13	18.27	22.25	0.00	12.26
	Districts 1-67	10.12	14.93	17.43	15.34	12.14
69	Dozier/Okeechobee	9.00	12.33	18.50	0.00	10.84
72	FAU Lab School	8.29	11.50	26.75	0.00	10.30
73	FSU Charter	4.00	11.00	6.00	0.00	8.00
74	FAMU Lab School	5.72	20.84	0.00	33.00	11.46
75	UF Lab School	8.12	11.90	25.25	14.85	12.00
	Florida	10.12	14.93	17.45	15.35	12.13

* Survey 3, February 9-13, 2009, as of March 31, 2009

Table 6: Minimum/Maximum Teacher Salaries by Degree Level, 2008-09*

District Number	District Name	Bachelor's		Master's		Specialist		Doctorate	
		Minimum	Maximum	Minimum	Maximum	Minimum	Maximum	Minimum	Maximum
1	Alachua	\$32,450	\$49,850	\$33,950	\$53,950	\$34,950	\$57,050	\$35,950	\$60,475
2	Baker	\$32,010	\$54,000	\$34,440	\$56,430	\$35,410	\$57,400	\$36,450	\$58,440
3	Bay	\$32,305	\$55,321	\$34,869	\$58,292	\$36,815	\$60,270	\$38,731	\$62,250
4	Bradford	\$32,025	\$55,094	\$34,525	\$57,594	\$35,225	\$58,294	\$36,025	\$59,094
5	Brevard	\$36,000	\$56,350	\$38,625	\$58,975	\$39,900	\$60,250	\$41,200	\$61,550
6	Broward	\$38,500	\$70,000	\$42,150	\$73,650	\$45,300	\$76,800	\$46,500	\$78,000
7	Calhoun	\$31,475	\$47,375	\$33,900	\$49,800	\$35,170	\$51,070	\$36,385	\$52,285
8	Charlotte	\$37,440	\$55,030	\$40,990	\$58,580	\$42,990	\$60,580	\$44,590	\$62,180
9	Citrus	\$33,858	\$52,521	\$35,858	\$54,521	\$36,858	\$55,521	\$37,858	\$56,521
10	Clay	\$37,800	\$60,000	\$39,800	\$62,000	\$40,500	\$62,700	\$41,100	\$63,300
11	Collier	\$38,198	\$60,793	\$40,893	\$66,808	\$42,393	\$68,808	\$43,393	\$69,808
12	Columbia	\$32,370	\$54,930	\$35,170	\$57,730	\$36,320	\$58,880	\$37,520	\$60,080
13	Dade	\$38,000	\$67,225	\$41,100	\$70,325	\$43,150	\$72,375	\$45,200	\$74,425
14	DeSoto	\$35,108	\$55,534	\$38,308	\$58,734	\$38,466	\$58,892	\$40,069	\$60,495
15	Dixie	\$31,200	\$48,782	\$33,592	\$51,257	\$34,112	\$51,796	\$34,320	\$52,011
16	Duval	\$37,300	\$64,801	\$38,300	\$67,949	\$39,300	\$69,388	\$40,300	\$71,391
17	Escambia	\$32,000	\$51,000	\$34,500	\$53,500	\$35,100	\$54,100	\$35,600	\$54,600
18	Flagler	\$38,213	\$57,677	\$40,963	\$60,427	\$42,463	\$61,927	\$43,713	\$63,177
19	Franklin	\$28,386	\$45,011	\$30,843	\$50,231	\$32,432	\$52,841	\$34,022	\$55,455
20	Gadsden	\$30,910	\$46,208	\$32,178	\$47,475	\$32,729	\$48,026	\$33,391	\$48,687
21	Gilchrist	\$32,694	\$51,657	\$34,961	\$53,924	\$35,450	\$54,413	\$36,131	\$55,094
22	Glades	\$34,000	\$55,000	\$35,500	\$57,400	\$37,500	\$60,600	\$39,000	\$63,000
23	Gulf	\$30,951	\$49,538	\$32,936	\$51,991	\$34,259	\$53,393	\$35,557	\$54,793
24	Hamilton	\$32,829	\$49,620	\$35,329	\$52,120	\$36,329	\$53,120	\$36,829	\$53,620
25	Hardee	\$33,015	\$51,877	\$35,260	\$55,404	\$35,590	\$55,923	\$35,887	\$56,390
26	Hendry	\$33,840	\$52,800	\$35,980	\$54,760	\$36,980	\$55,970	\$38,980	\$58,000
27	Hernando	\$35,000	\$53,350	\$37,500	\$55,850	\$38,500	\$56,850	\$39,500	\$57,850
28	Highlands	\$34,000	\$54,000	\$36,200	\$56,200	\$36,500	\$56,500	\$37,800	\$57,800
29	Hillsborough	\$37,014	\$61,594	\$39,927	\$64,508	\$41,392	\$65,972	\$42,841	\$67,421
30	Holmes	\$31,500	\$48,500	\$33,500	\$50,900	\$34,645	\$52,054	\$35,803	\$53,224
31	Indian River	\$35,500	\$57,100	\$38,453	\$60,053	\$39,409	\$61,009	\$40,374	\$61,974
32	Jackson	\$31,853	\$49,109	\$34,909	\$52,226	\$37,976	\$55,346	\$39,893	\$57,293
33	Jefferson	\$34,125	\$52,500	\$35,831	\$55,125	\$36,684	\$56,438	\$37,538	\$57,750
34	Lafayette	\$32,993	\$50,036	\$35,193	\$52,236	\$36,293	\$53,336	\$36,953	\$53,996
35	Lake	\$35,600	\$54,550	\$37,975	\$56,925	\$38,925	\$57,875	\$39,925	\$58,875
36	Lee	\$38,192	\$59,941	\$40,692	\$62,441	\$42,192	\$63,941	\$43,192	\$64,941
37	Leon	\$34,100	\$60,576	\$35,300	\$63,095	\$36,500	\$65,172	\$37,700	\$66,846
38	Levy	\$32,427	\$49,979	\$35,239	\$52,789	\$35,950	\$53,531	\$36,659	\$54,211
39	Liberty	\$31,770	\$49,182	\$34,704	\$52,116	\$36,304	\$53,716	\$36,705	\$54,117
40	Madison	\$33,568	\$54,730	\$36,071	\$58,902	\$36,905	\$60,295	\$36,905	\$60,295
41	Manatee	\$38,517	\$60,836	\$39,555	\$66,033	\$41,966	\$70,835	\$44,376	\$74,349
42	Marion	\$35,070	\$52,420	\$37,370	\$55,420	\$39,170	\$58,720	\$40,970	\$62,920
43	Martin	\$37,000	\$57,237	\$39,220	\$60,672	\$41,573	\$64,312	\$43,926	\$67,952
44	Monroe	\$42,330	\$70,264	\$44,088	\$76,555	\$45,036	\$78,473	\$45,577	\$80,184
45	Nassau	\$36,500	\$57,000	\$39,500	\$60,000	\$39,700	\$60,200	\$39,900	\$60,400
46	Okaloosa	\$32,428	\$64,036	\$34,212	\$67,454	\$35,833	\$70,561	\$37,455	\$73,667
47	Okeechobee	\$34,000	\$54,860	\$36,200	\$57,060	\$37,200	\$58,060	\$38,200	\$59,060
48	Orange	\$37,000	\$61,560	\$39,605	\$64,165	\$40,993	\$65,553	\$42,267	\$66,827
49	Osceola	\$37,500	\$60,000	\$40,185	\$62,685	\$41,685	\$64,185	\$43,185	\$65,685
50	Palm Beach	\$36,822	\$71,245	\$39,822	\$74,245	\$41,322	\$75,745	\$42,822	\$77,245
51	Pasco	\$36,420	\$58,470	\$39,120	\$61,170	\$40,820	\$62,870	\$41,820	\$63,870
52	Pinellas	\$37,300	\$59,870	\$39,480	\$62,050	\$40,650	\$63,220	\$41,800	\$64,370
53	Polk	\$35,000	\$54,675	\$37,181	\$56,856	\$37,839	\$57,514	\$38,220	\$57,895
54	Putnam	\$36,251	\$55,365	\$38,397	\$60,011	\$39,397	\$61,011	\$40,297	\$61,911
55	St. Johns	\$38,000	\$53,700	\$40,650	\$56,550	\$41,650	\$57,550	\$42,650	\$58,750
56	St. Lucie	\$35,356	\$59,717	\$38,621	\$62,921	\$41,014	\$65,435	\$42,092	\$66,565
57	Santa Rosa	\$32,092	\$59,181	\$34,575	\$61,664	\$35,817	\$62,906	\$37,059	\$64,148
58	Sarasota	\$38,530	\$52,068	\$41,747	\$65,126	\$44,604	\$72,706	\$46,510	\$75,811
59	Seminole	\$36,000	\$64,884	\$40,136	\$68,946	\$43,586	\$72,386	\$47,041	\$75,818
60	Sumter	\$35,931	\$57,554	\$38,312	\$60,000	\$39,503	\$61,223	\$40,599	\$62,922
61	Suwannee	\$32,473	\$54,067	\$34,783	\$56,377	\$35,308	\$56,902	\$36,223	\$57,817
62	Taylor	\$30,000	\$50,826	\$33,226	\$56,607	\$36,896	\$60,133	\$39,673	\$62,677
63	Union	\$33,250	\$50,677	\$34,750	\$53,272	\$35,250	\$55,055	\$36,050	\$56,038
64	Volusia	\$34,010	\$59,147	\$37,001	\$63,572	\$38,424	\$65,536	\$39,903	\$67,393
65	Wakulla	\$33,500	\$52,500	\$35,700	\$54,700	\$36,200	\$55,200	\$36,700	\$55,700
66	Walton	\$34,700	\$61,205	\$36,400	\$62,930	\$37,900	\$64,405	\$39,500	\$66,005
67	Washington	\$32,085	\$50,715	\$33,120	\$53,820	\$34,155	\$54,855	\$35,190	\$55,890
	Florida	\$34,606	\$55,779	\$37,006	\$58,926	\$38,319	\$60,567	\$39,500	\$61,994

* Survey 3, February 9-13, 2009, as of March 31, 2009

Table 7: Median Teacher Salaries by Degree Level, 2008-09*

District Number	District Name	Bachelor's	Master's	Specialist	Doctorate	Total
1	Alachua	\$35,433	\$40,235	\$45,800	\$46,550	\$38,550
2	Baker	\$35,350	\$51,480		\$62,530	\$38,713
3	Bay	\$37,540	\$46,757	\$51,816	\$48,441	\$42,958
4	Bradford	\$33,668	\$40,342	\$45,170	\$36,667	\$35,167
5	Brevard	\$39,881	\$46,807	\$53,255	\$48,758	\$42,473
6	Broward	\$41,491	\$46,442	\$46,787	\$56,935	\$42,899
7	Calhoun	\$35,970	\$43,370		\$45,710	\$38,985
8	Charlotte	\$41,795	\$51,769	\$56,898	\$55,772	\$47,508
9	Citrus	\$37,957	\$53,669	\$52,879	\$60,104	\$42,664
10	Clay	\$40,847	\$44,853	\$62,700	\$42,300	\$42,325
11	Collier	\$44,351	\$62,062	\$66,645	\$69,122	\$50,847
12	Columbia	\$39,763	\$54,433	\$39,829		\$39,763
13	Dade	\$39,356	\$47,711	\$58,251	\$60,301	\$43,054
14	DeSoto	\$37,738	\$47,261	\$60,282	\$37,738	\$38,877
15	Dixie	\$37,803	\$44,670			\$38,815
16	Duval	\$39,078	\$46,316	\$61,342	\$45,974	\$40,771
17	Escambia	\$36,038	\$44,720	\$51,436	\$43,089	\$39,789
18	Flagler	\$42,299	\$50,308	\$52,217	\$60,760	\$44,970
19	Franklin	\$35,633	\$46,753	\$53,999	\$60,773	\$42,714
20	Gadsden	\$31,899	\$34,579	\$48,026	\$34,333	\$33,121
21	Gilchrist	\$39,233	\$44,441	\$42,969	\$54,441	\$42,481
22	Glades	\$40,880	\$53,300	\$60,600	\$46,020	\$43,520
23	Gulf	\$37,035	\$42,351	\$49,557		\$38,807
24	Hamilton	\$41,009	\$42,433		\$53,620	\$42,433
25	Hardee	\$40,427	\$55,923	\$42,416		\$40,895
26	Hendry	\$38,010	\$52,290	\$54,500	\$56,510	\$40,240
27	Hernando	\$36,869	\$43,318	\$41,850	\$41,350	\$38,992
28	Highlands	\$36,647	\$51,226	\$52,500	\$44,961	\$46,533
29	Hillsborough	\$40,485	\$47,762	\$57,843	\$53,428	\$42,670
30	Holmes	\$38,125	\$48,500	\$45,701		\$41,685
31	Indian River	\$38,837	\$46,227	\$56,516	\$41,808	\$43,083
32	Jackson	\$36,120	\$45,524	\$55,346	\$57,293	\$41,211
33	Jefferson	\$39,375	\$46,856	\$53,616		\$44,625
34	Lafayette	\$39,063	\$45,144	\$42,388	\$45,371	\$40,609
35	Lake	\$37,250	\$42,000	\$48,189	\$45,825	\$38,850
36	Lee	\$41,007	\$48,890	\$51,679	\$49,874	\$44,508
37	Leon	\$37,421	\$42,733	\$43,946	\$54,762	\$39,307
38	Levy	\$40,013	\$47,774	\$51,033	\$41,907	\$43,788
39	Liberty	\$33,618	\$42,712	\$35,688		\$35,936
40	Madison	\$36,095	\$43,345	\$43,243		\$37,890
41	Manatee	\$41,545	\$51,473	\$60,396	\$56,911	\$45,519
42	Marion	\$36,970	\$45,868	\$57,470	\$49,170	\$39,670
43	Martin	\$42,869	\$46,655	\$61,775	\$49,275	\$45,310
44	Monroe	\$49,467	\$55,996	\$75,065	\$59,589	\$52,024
45	Nassau	\$37,900	\$48,850	\$43,985	\$42,800	\$41,650
46	Okaloosa	\$44,611	\$58,244	\$62,834	\$73,667	\$48,998
47	Okeechobee	\$38,562	\$46,005	\$58,060	\$41,803	\$39,545
48	Orange	\$39,128	\$44,805	\$46,993	\$49,867	\$41,717
49	Osceola	\$38,700	\$44,274	\$45,785	\$49,335	\$41,085
50	Palm Beach	\$41,327	\$54,168	\$61,118	\$62,618	\$45,519
51	Pasco	\$38,820	\$45,570	\$46,142	\$48,270	\$41,123
52	Pinellas	\$41,344	\$46,245	\$50,667	\$50,220	\$43,352
53	Polk	\$38,156	\$46,032	\$57,558	\$48,848	\$40,062
54	Putnam	\$42,624	\$52,080	\$55,194	\$46,118	\$44,331
55	St. Johns	\$41,818	\$47,807	\$57,550	\$47,400	\$43,631
56	St. Lucie	\$35,997	\$45,883	\$54,744	\$51,513	\$39,768
57	Santa Rosa	\$39,842	\$47,232	\$49,513	\$49,716	\$42,729
58	Sarasota	\$43,821	\$58,677	\$76,643	\$61,665	\$54,624
59	Seminole	\$39,041	\$47,712	\$57,003	\$65,183	\$43,672
60	Sumter	\$40,723	\$52,018	\$58,459		\$43,444
61	Suwannee	\$41,642	\$51,637	\$55,161	\$38,154	\$44,861
62	Taylor	\$34,232	\$47,541	\$52,594	\$44,904	\$38,957
63	Union	\$34,996	\$39,825	\$41,220	\$36,050	\$35,829
64	Volusia	\$38,312	\$46,717	\$55,577	\$52,286	\$41,743
65	Wakulla	\$34,750	\$43,200	\$40,700	\$38,200	\$37,700
66	Walton	\$41,130	\$51,380	\$47,240	\$45,930	\$45,360
67	Washington	\$38,295	\$51,750	\$54,855		\$42,435
	Districts 1-67	\$39,763	\$47,483	\$55,451	\$54,930	\$42,673
68	School for Deaf/Blind	\$38,400	\$42,800			\$40,600
69	Dozier/Okeechobee	\$51,898	\$51,898	\$34,776		\$51,898
72	FAU Lab School	\$35,585	\$41,509	\$65,435		\$38,790
73	FSU Charter	\$29,300	\$33,500	\$32,600		\$32,600
74	FAMU Lab School	\$34,100	\$38,373		\$52,006	\$34,100
75	UF Lab School	\$32,768	\$35,786	\$48,837	\$40,376	\$34,551
	Florida	\$39,763	\$47,475	\$55,451	\$54,900	\$42,670

* Survey 3, February 9-13, 2009, as of March 31, 2009

Table 8: Comparison of Average Teacher Salaries, 2004-05 through 2008-09*

District Number	District Name	2004-05	2005-06	2006-07	2007-08	2008-09
1	Alachua	36,569	37,633	40,181	41,784	41,316
2	Baker	37,137	38,200	40,518	42,765	42,612
3	Bay	38,658	39,605	41,679	41,756	43,678
4	Bradford	36,529	37,431	39,389	40,427	39,620
5	Brevard	39,459	41,141	43,963	45,486	45,287
6	Broward	44,107	45,348	47,962	50,294	50,722
7	Calhoun	35,957	38,456	40,251	40,315	40,539
8	Charlotte	41,996	44,325	46,319	48,289	48,069
9	Citrus	40,151	40,954	42,700	44,419	45,033
10	Clay	38,079	39,504	42,398	44,528	45,500
11	Collier	46,278	47,800	50,804	51,902	52,710
12	Columbia	38,593	40,407	42,000	42,947	42,632
13	Dade	47,300	47,471	49,191	50,737	49,555
14	DeSoto	37,898	39,685	42,053	44,025	43,057
15	Dixie	38,399	39,121	41,345	41,169	40,775
16	Duval	41,118	42,668	45,014	46,896	47,087
17	Escambia	36,407	37,402	39,075	41,551	41,430
18	Flagler	42,199	44,156	46,871	48,366	48,056
19	Franklin	37,178	38,170	37,981	39,008	43,051
20	Gadsden	32,656	33,651	35,842	37,051	35,775
21	Gilchrist	36,312	36,158	39,892	42,780	43,180
22	Glades	39,032	39,963	41,447	43,872	45,099
23	Gulf	38,240	39,188	41,204	41,044	41,125
24	Hamilton	36,903	40,407	42,349	43,369	43,143
25	Hardee	39,139	39,401	40,261	43,232	43,370
26	Hendry	39,448	41,188	41,667	42,983	43,424
27	Hernando	36,177	36,733	39,089	40,753	41,795
28	Highlands	39,090	40,055	41,876	43,811	44,651
29	Hillsborough	38,944	39,589	43,412	46,489	46,421
30	Holmes	36,337	37,318	39,622	41,459	41,290
31	Indian River	39,518	40,756	43,162	44,853	45,030
32	Jackson	36,514	37,496	39,306	41,235	41,246
33	Jefferson	35,094	38,275	41,770	43,801	43,647
34	Lafayette	33,999	35,766	37,461	41,111	41,917
35	Lake	38,667	39,851	41,397	42,334	42,478
36	Lee	41,738	42,389	44,706	45,382	47,012
37	Leon	39,958	41,269	43,412	44,213	43,832
38	Levy	38,589	40,011	41,780	43,137	43,236
39	Liberty	35,813	36,927	39,191	39,812	39,327
40	Madison	35,783	38,870	40,823	42,038	41,591
41	Manatee	41,422	44,440	47,480	49,496	48,810
42	Marion	38,558	39,759	42,068	41,587	43,237
43	Martin	42,337	43,585	45,646	45,272	47,102
44	Monroe	46,951	48,422	50,775	54,083	56,272
45	Nassau	40,070	41,815	43,787	44,999	45,059
46	Okealoosa	42,989	44,758	47,538	50,093	51,446
47	Okeechobee	39,717	40,243	41,809	42,828	43,228
48	Orange	39,856	41,246	44,288	45,477	45,494
49	Osceola	38,292	40,418	42,851	44,519	44,639
50	Palm Beach	46,154	43,639	48,529	49,946	50,178
51	Pasco	39,224	40,939	43,472	44,310	43,901
52	Pinellas	41,092	43,916	45,679	47,269	46,839
53	Polk	37,396	39,875	41,505	43,325	43,080
54	Putnam	40,334	41,745	43,981	46,409	47,291
55	St. Johns	41,202	42,758	45,032	47,413	47,102
56	St. Lucie	40,293	42,097	43,399	44,179	44,066
57	Santa Rosa	38,141	41,007	43,196	44,180	44,685
58	Sarasota	44,853	49,342	52,348	53,809	55,213
59	Seminole	39,296	41,826	46,475	48,779	48,446
60	Sumter	40,322	42,496	45,508	46,709	47,470
61	Suwannee	41,052	42,399	43,721	43,715	45,669
62	Taylor	39,104	39,243	42,111	41,859	41,077
63	Union	32,451	33,895	35,489	37,369	38,848
64	Volusia	39,967	41,186	43,485	45,325	45,529
65	Wakulla	36,897	38,696	40,857	41,418	40,872
66	Walton	40,296	41,550	45,121	46,953	46,969
67	Washington	38,793	40,913	42,324	43,055	42,909
	Districts 1-67	41,581	42,705	45,307	46,930	46,950
68	School for Deaf/Blind	41,428	42,617	44,878	43,950	44,057
69	Dozier/Okeechobee	46,716	50,264	53,339	52,783	52,066
72	FAU Lab School	40,202	43,495	43,984	44,976	42,455
73	FSU Charter	29,896	31,111	33,194	33,446	33,193
74	FAMU Lab School	34,100	34,031	34,843	34,905	36,881
75	UF Lab School	37,639	37,955	36,756	38,239	38,676
	Florida	41,578	42,702	45,296	46,922	46,938

* Survey 3, February 9-13, 2009, as of March 31, 2009

Table 9: Percent Change in Average Teacher Salaries, 2007-08 to 2008-09*

District Number	District Name	2007-08	2008-09	Percent Change 2007-08 to 2008-09
1	Alachua	41,784	41,316	-1.12%
2	Baker	42,765	42,612	-0.36%
3	Bay	41,756	43,678	4.60%
4	Bradford	40,427	39,620	-2.00%
5	Brevard	45,486	45,287	-0.44%
6	Broward	50,294	50,722	0.85%
7	Calhoun	40,315	40,539	0.56%
8	Charlotte	48,289	48,069	-0.46%
9	Citrus	44,419	45,033	1.38%
10	Clay	44,528	45,500	2.18%
11	Collier	51,902	52,710	1.56%
12	Columbia	42,947	42,632	-0.73%
13	Dade	50,737	49,555	-2.33%
14	DeSoto	44,025	43,057	-2.20%
15	Dixie	41,169	40,775	-0.96%
16	Duval	46,896	47,087	0.41%
17	Escambia	41,551	41,430	-0.29%
18	Flagler	48,366	48,056	-0.64%
19	Franklin	39,008	43,051	10.36%
20	Gadsden	37,051	35,775	-3.44%
21	Gilchrist	42,780	43,180	0.94%
22	Glades	43,872	45,099	2.80%
23	Gulf	41,044	41,125	0.20%
24	Hamilton	43,369	43,143	-0.52%
25	Hardee	43,232	43,370	0.32%
26	Hendry	42,983	43,424	1.03%
27	Hernando	40,753	41,795	2.56%
28	Highlands	43,811	44,651	1.92%
29	Hillsborough	46,489	46,421	-0.15%
30	Holmes	41,459	41,290	-0.41%
31	Indian River	44,853	45,030	0.39%
32	Jackson	41,235	41,246	0.03%
33	Jefferson	43,801	43,647	-0.35%
34	Lafayette	41,111	41,917	1.96%
35	Lake	42,334	42,478	0.34%
36	Lee	45,382	47,012	3.59%
37	Leon	44,213	43,832	-0.86%
38	Levy	43,137	43,236	0.23%
39	Liberty	39,812	39,327	-1.22%
40	Madison	42,038	41,591	-1.06%
41	Manatee	49,496	48,810	-1.39%
42	Marion	41,587	43,237	3.97%
43	Martin	45,272	47,102	4.04%
44	Monroe	54,083	56,272	4.05%
45	Nassau	44,999	45,059	0.13%
46	Okaloosa	50,093	51,446	2.70%
47	Okeechobee	42,828	43,228	0.93%
48	Orange	45,477	45,494	0.04%
49	Osceola	44,519	44,639	0.27%
50	Palm Beach	49,946	50,178	0.46%
51	Pasco	44,310	43,901	-0.92%
52	Pinellas	47,269	46,839	-0.91%
53	Polk	43,325	43,080	-0.57%
54	Putnam	46,409	47,291	1.90%
55	St. Johns	47,413	47,102	-0.66%
56	St. Lucie	44,179	44,066	-0.26%
57	Santa Rosa	44,180	44,685	1.14%
58	Sarasota	53,809	55,213	2.61%
59	Seminole	48,779	48,446	-0.68%
60	Sumter	46,709	47,470	1.63%
61	Suwannee	43,715	45,669	4.47%
62	Taylor	41,859	41,077	-1.87%
63	Union	37,369	38,848	3.96%
64	Volusia	45,325	45,529	0.45%
65	Wakulla	41,418	40,872	-1.32%
66	Walton	46,953	46,969	0.03%
67	Washington	43,055	42,909	-0.34%
	Districts 1-67	46,930	46,950	0.04%
68	School for Deaf/Blind	43,950	44,057	0.24%
69	Dozier/Okeechobee	52,783	52,066	-1.36%
72	FAU Lab School	44,976	42,455	-5.61%
73	FSU Charter	33,446	33,193	-0.76%
74	FAMU Lab School	34,905	36,881	5.66%
75	UF Lab School	38,239	38,676	1.14%
	Florida	46,922	46,938	0.03%

* Survey 3, February 9-13, 2009, as of March 31, 2009

Table 10: Average Teacher Salaries in Rank Order, 2008-09*

District Number	District Name	Average Salary	Rank
44	MONROE	56,272	1
58	SARASOTA	55,213	2
11	COLLIER	52,710	3
46	OKALOOSA	51,446	4
6	BROWARD	50,722	5
50	PALM BEACH	50,178	6
13	DADE	49,555	7
41	MANATEE	48,810	8
59	SEMINOLE	48,446	9
8	CHARLOTTE	48,069	10
18	FLAGLER	48,056	11
60	SUMTER	47,470	12
54	PUTNAM	47,291	13
43	MARTIN	47,102	14
55	ST. JOHNS	47,102	15
16	DUVAL	47,087	16
36	LEE	47,012	17
66	WALTON	46,969	18
	FLORIDA	46,938	
52	PINELLAS	46,839	19
29	HILLSBOROUGH	46,421	20
61	SUWANNEE	45,669	21
64	VOLUSIA	45,529	22
10	CLAY	45,500	23
48	ORANGE	45,494	24
5	BREVARD	45,287	25
22	GLADES	45,099	26
45	NASSAU	45,059	27
9	CITRUS	45,033	28
31	INDIAN RIVER	45,030	29
57	SANTA ROSA	44,685	30
28	HIGHLANDS	44,651	31
49	OSCEOLA	44,639	32
56	ST. LUCIE	44,066	33
51	PASCO	43,901	34
37	LEON	43,832	35
3	BAY	43,678	36
33	JEFFERSON	43,647	37
26	HENDRY	43,424	38
25	HARDEE	43,370	39
42	MARION	43,237	40
38	LEVY	43,236	41
47	OKEECHOBEE	43,228	42
21	GILCHRIST	43,180	43
24	HAMILTON	43,143	44
53	POLK	43,080	45
14	DESOTO	43,057	46
19	FRANKLIN	43,051	47
67	WASHINGTON	42,909	48
12	COLUMBIA	42,632	49
2	BAKER	42,612	50
35	LAKE	42,478	51
34	LAFAYETTE	41,917	52
27	HERNANDO	41,795	53
40	MADISON	41,591	54
17	ESCAMBIA	41,430	55
1	ALACHUA	41,316	56
30	HOLMES	41,290	57
32	JACKSON	41,246	58
23	GULF	41,125	59
62	TAYLOR	41,077	60
65	WAKULLA	40,872	61
15	DIXIE	40,775	62
7	CALHOUN	40,539	63
4	BRADFORD	39,620	64
39	LIBERTY	39,327	65
63	UNION	38,848	66
20	GADSDEN	35,775	67

* Survey 3, February 9-13, 2009, as of March 31, 2009

Distribution of Average Teacher Salaries 2008-09

