



Florida Information Note

Education Information & Accountability Services

Trends in Florida Teachers' Salaries, 1993 through 2004

July 2005

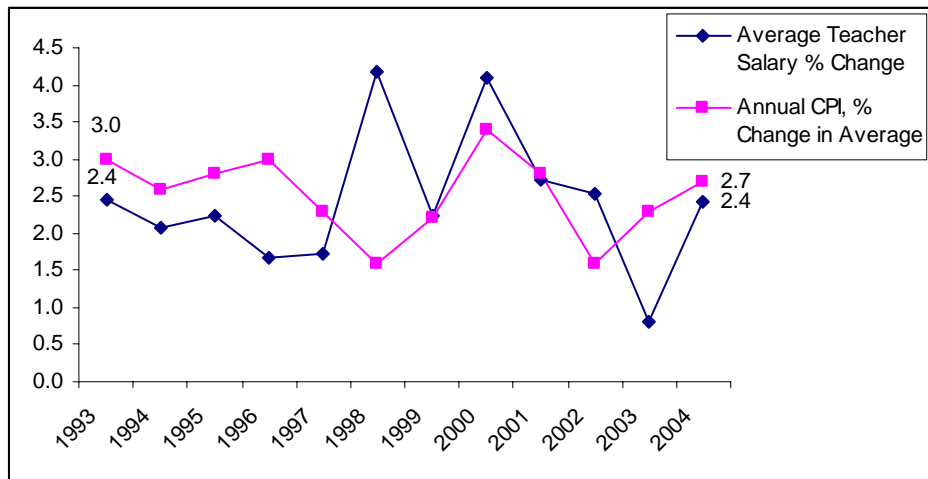
Series 2006-01F

Introduction:

In Florida, during the mid 1990s, annual increases in public school teachers' salaries kept better pace with inflation than during the beginning of that decade. As with many other professions, wage increases for teachers eroded during the economic recession of the early 1990s, and salaries leveled off. By 1998-99, however, the annual increase in Florida's average teacher salary rose above yearly increases in the national Consumer Price Index (CPI). In recent years, the statewide annual change in the average teacher salary has fluctuated above and below the year-to-year percentage of increase in the CPI.

Consumer Price Index and salary increases:

The U.S. Department of Labor, Bureau of Labor Statistics, produces a national CPI that can be used to measure inflation/deflation over time. Changes in this index, as reported on a monthly and annual basis, reflect the percentage of increase or decrease in the price of consumer goods. As such, the CPI can be used as a gauge of changes in certain costs of living. It can also be compared with annual changes in workers' salaries to show the relationship of salary changes to inflation. The following chart compares annual increases in the average salary of teachers in Florida with percentage changes (from the previous year) in the national CPI from 1993 through 2004.



From 1993 through 1997, yearly increases in the average teacher salary consistently lagged behind increases in the national CPI. In 1998, however, the increase in average teacher salary exceeded the increase in the national CPI. Since that time, the annual increase in teacher salaries fluctuated above and below the increase in the national CPI. The annual increase in teacher salaries peaked in 1998-99 and 2001-02, when it exceeded four percent.

Factors that influence the average teacher salary include the number of new teachers hired at entry-level wages, the turnover rate among teachers, the number of years that current teachers have been in the workforce, the degree level of teachers, and wage scale adjustments. The table on the following page shows average teacher salaries by district for 1994-95 through 2004-05, including statewide averages.

Average Salaries for Florida's Public School Teachers: 1994-95 through 2004-05

DISTRICT	1994-95	1995-96	1996-97	1997-98	1998-99	1999-00	2000-01	2001-02	2002-03	2003-04	2004-05
01 ALACHUA	\$28,989	\$28,702	\$29,907	\$30,960	\$31,758	\$32,742	\$34,216	\$33,970	\$34,749	\$34,977	\$36,569
02 BAKER	28,948	29,098	29,952	31,335	32,299	32,875	34,137	34,382	35,317	36,026	37,137
03 BAY	30,772	31,235	32,203	32,313	32,868	34,557	36,029	36,414	37,383	38,252	38,658
04 BRADFORD	27,606	28,400	28,146	30,751	31,332	32,556	33,468	33,557	36,319	35,170	36,529
05 BREVARD	31,351	31,323	31,979	31,266	34,641	35,725	36,716	37,436	38,606	38,655	39,459
06 BROWARD	35,771	36,908	37,496	38,221	40,036	40,827	41,526	40,970	42,822	41,964	44,107
07 CALHOUN	30,420	31,047	31,364	32,333	32,969	33,285	34,148	34,382	34,504	35,226	35,957
08 CHARLOTTE	30,026	30,778	32,981	33,725	35,435	35,421	37,425	36,994	39,462	40,867	41,996
09 CITRUS	30,091	30,448	30,445	30,995	32,565	32,714	34,645	34,688	35,380	39,010	40,151
10 CLAY	27,532	28,301	28,693	32,383	33,418	34,538	36,180	37,062	37,612	37,956	38,079
11 COLLIER	36,629	38,049	38,111	39,356	39,701	41,044	41,643	42,511	44,784	44,847	46,278
12 COLUMBIA	29,361	30,336	30,746	31,744	32,772	33,674	34,798	35,370	36,549	37,392	38,593
13 DADE	37,718	40,193	39,439	40,170	41,882	42,591	44,065	44,964	45,379	46,264	47,300
14 DESOTO	29,182	29,761	31,201	31,544	31,318	32,060	34,099	35,633	36,577	37,159	37,898
15 DIXIE	26,767	28,006	28,225	28,244	29,434	30,600	31,751	31,338	31,664	33,270	38,399
16 DUVAL	31,906	32,444	33,032	32,779	34,953	36,116	37,913	38,893	40,973	40,335	41,118
17 ESCAMBIA	30,000	29,014	29,558	30,034	31,021	31,682	31,261	33,849	34,821	34,286	36,407
18 FLAGLER	29,414	29,733	30,038	31,020	32,611	32,474	34,900	35,849	37,584	39,649	42,199
19 FRANKLIN	27,571	28,114	29,949	30,230	30,826	31,563	32,883	33,484	35,316	36,323	37,178
20 GADSDEN	27,692	27,987	28,802	29,458	29,865	30,428	30,811	31,750	32,831	32,428	32,656
21 GILCHRIST	29,380	30,043	30,588	31,249	31,503	31,801	33,195	33,826	35,321	34,246	36,312
22 GLADES	28,018	28,188	28,230	29,631	30,344	35,177	35,477	36,437	36,854	38,438	39,032
23 GULF	28,710	29,193	30,070	30,543	32,070	31,923	34,802	35,229	36,822	37,743	38,240
24 HAMILTON	28,012	27,735	28,333	28,607	30,254	30,021	31,445	32,356	34,858	35,642	36,903
25 HARDEE	29,864	29,725	31,020	31,381	31,994	33,665	34,505	34,998	36,765	38,048	39,139
26 HENDRY	29,850	30,479	31,097	31,786	32,019	34,992	36,801	36,622	37,754	38,061	39,448
27 HERNANDO	27,442	28,285	28,784	30,058	31,103	31,592	33,079	33,585	34,963	35,281	36,177
28 HIGHLANDS	31,415	31,857	32,333	33,037	33,932	34,505	35,436	36,367	37,672	38,707	39,090
29 HILLSBOROUGH	30,829	31,684	32,567	33,320	34,991	35,741	37,922	37,933	38,773	38,762	38,944
30 HOLMES	29,662	29,986	29,767	30,699	32,063	32,465	34,275	34,659	35,850	36,196	36,337
31 INDIAN RIVER	32,220	32,046	33,005	33,376	33,727	34,996	35,913	35,913	38,266	38,664	39,518
32 JACKSON	26,871	28,558	30,245	30,049	31,341	32,375	33,732	33,453	34,191	34,992	36,514
33 JEFFERSON	29,171	29,245	29,596	31,091	31,287	32,168	33,993	33,635	34,643	33,022	35,094
34 LAFAYETTE	25,433	26,126	26,737	26,732	28,105	29,076	30,551	31,115	32,692	32,688	33,999
35 LAKE	29,284	30,826	31,656	32,640	32,987	34,576	34,465	35,047	37,652	37,946	38,667
36 LEE	32,191	32,490	33,553	35,083	35,952	36,159	38,343	39,443	40,214	41,215	41,738
37 LEON	31,379	31,981	32,371	31,870	33,418	33,343	36,433	36,269	38,719	39,117	39,958
38 LEVY	28,846	29,371	30,040	31,155	33,375	33,827	34,958	35,429	36,805	36,993	38,589
39 LIBERTY	29,684	30,930	31,228	31,876	31,962	31,398	32,815	32,259	33,320	34,699	35,813
40 MADISON	29,159	28,501	28,847	30,263	31,450	32,605	33,628	33,754	34,339	35,830	35,783
41 MANATEE	30,717	32,563	32,533	34,097	35,218	34,794	36,997	37,444	39,283	40,081	41,422
42 MARION	28,772	28,894	28,204	28,542	32,465	31,509	34,850	34,607	37,537	37,938	38,558
43 MARTIN	30,042	30,490	31,942	32,502	34,493	35,284	36,819	36,677	39,311	39,294	42,337
44 MONROE	33,983	34,472	34,038	35,144	35,781	37,663	38,519	39,587	40,471	41,618	46,951
45 NASSAU	32,316	32,365	32,597	33,245	34,720	34,795	37,295	37,192	39,186	39,363	40,070
46 OKALOOSA	31,898	32,383	32,956	35,130	36,137	37,819	40,082	40,315	41,815	42,629	42,989
47 OKEECHOBEE	31,324	31,996	32,325	31,852	34,106	35,051	36,316	36,717	38,320	38,900	39,717
48 ORANGE	30,397	30,984	31,757	31,676	32,152	33,219	34,604	42,457	37,808	38,892	39,856
49 OSCEOLA	28,383	28,418	28,986	29,648	31,537	31,897	33,421	34,939	36,567	36,702	38,292
50 PALM BEACH	36,652	36,870	38,679	38,557	40,441	41,908	41,942	44,126	45,437	45,218	46,154
51 PASCO	27,924	28,156	28,578	30,977	32,419	33,660	35,022	35,045	38,051	38,670	39,224
52 PINELLAS	33,259	32,846	34,013	34,525	35,191	35,860	38,011	38,797	40,282	40,482	41,092
53 POLK	28,456	28,977	29,288	31,186	31,873	31,356	34,731	34,917	36,571	37,214	37,396
54 PUTNAM	29,031	29,277	30,737	31,536	32,360	33,783	35,039	36,770	37,415	37,911	40,334
55 ST. JOHNS	30,040	30,290	30,562	30,909	31,160	33,174	35,279	36,591	37,566	40,131	41,202
56 ST. LUCIE	32,298	32,242	32,213	32,693	33,648	34,865	36,324	37,030	38,450	38,697	40,293
57 SANTA ROSA	29,490	29,791	31,314	32,092	32,946	34,224	35,905	36,225	37,947	38,464	38,141
58 SARASOTA	36,272	36,962	36,777	37,632	39,430	40,506	42,233	42,098	42,879	43,980	44,853
59 SEMINOLE	32,963	34,081	34,665	35,413	35,860	35,157	36,667	35,758	38,143	37,537	39,296
60 SUMTER	30,599	30,403	31,210	31,308	32,610	34,170	35,534	35,900	38,244	38,968	40,322
61 SUWANNEE	31,553	32,657	34,893	35,584	36,502	36,375	38,561	38,223	39,827	40,303	41,052
62 TAYLOR	29,861	29,306	30,988	31,740	31,768	34,052	33,838	35,899	37,726	38,523	39,104
63 UNION	26,478	26,558	27,016	28,261	28,773	28,924	28,920	30,047	30,558	31,477	32,451
64 VOLUSIA	30,594	30,015	31,776	31,070	32,974	34,143	35,995	35,720	38,422	39,436	39,967
65 WAKULLA	27,327	28,970	29,568	29,743	31,286	32,650	34,193	35,045	35,473	35,752	36,897
66 WALTON	28,593	28,102	29,862	29,379	29,573	30,868	34,123	34,268	35,804	38,222	40,296
67 WASHINGTON	28,965	29,372	32,817	32,816	35,197	35,898	37,329	36,710	38,317	39,242	38,793
SUBTOTAL (1-67)	32,601	33,330	33,885	34,473	35,915	36,720	38,223	39,272	40,267	40,587	41,581
68 DEAF/BLIND	32,189	33,513	-	-	-	-	43,385	43,583	47,803	48,324	41,428
69 DOZIER/OKEEC	30,484	30,106	33,379	33,408	40,008	41,481	44,568	44,208	46,266	47,034	46,716
70 ECKERD YOUTH	26,320	27,674	32,404	31,851	-	-	-	-	-	-	-
71 FL VIRTUAL	-	-	-	-	-	-	-	-	-	44,741	44,324
72 FAU LAB SCH	-	-	-	-	-	-	-	48,736	48,736	42,890	40,202
73 FSU LAB SCH	-	-	-	-	-	-	-	35,269	-	29,372	29,896
74 FAMU LAB SCH	-	-	-	-	-	-	-	36,984	-	53,000	34,100
75 UF LAB SCH	-	-	-	-	-	-	-	37,968	37,688	36,291	37,639
STATE AVERAGE	32,600	33,330	33,885	34,473	35,916	36,722	38,230	39,275	40,275	40,598	41,578

Source: Florida Department of Education Staff Database.

As a service to Florida school districts, each *Florida Information Note* (FIN) presents information on education topics of current interest. Each FIN is prepared by Education Information and Accountability Services, 852 Turlington Bldg., 325 W. Gaines Street, Tallahassee, Florida 32399-0400. For further information, call (850) 245-0400 or SunCom 205-0400, or visit our web address at <http://www/firn.edu/doe/eias/>.