

Statistical Brief

Series 2008-10B

April 2008

IN THIS ISSUE:

Table 1: Comparison of Teachers Separating from Teaching, 2005-06 and 2006-07

Table 2: Teachers Separating from Teaching in the District by Race, 2006-07

Table 3: Teachers Separating from Service by Gender, 2006-07

Table 4: Teachers Separating from Service by Age Range and Average Years of Experience, 2006-07

Table 5: Teachers Separating from Service by Separation Category, 2006-07

Table 6a: Teachers Voluntarily Separating from Service by Reason, 2006-07

Table 6b: Teachers Voluntarily Separating from Service by Reason, 2006-07

Table 6c: Teachers Voluntarily Separating from Service by Reason, 2006-07

Table 7: Teachers Involuntarily Separating from Service by Reason, 2006-07

Table 8: Teachers Separating from Service by Future Employment Plans, 2006-07

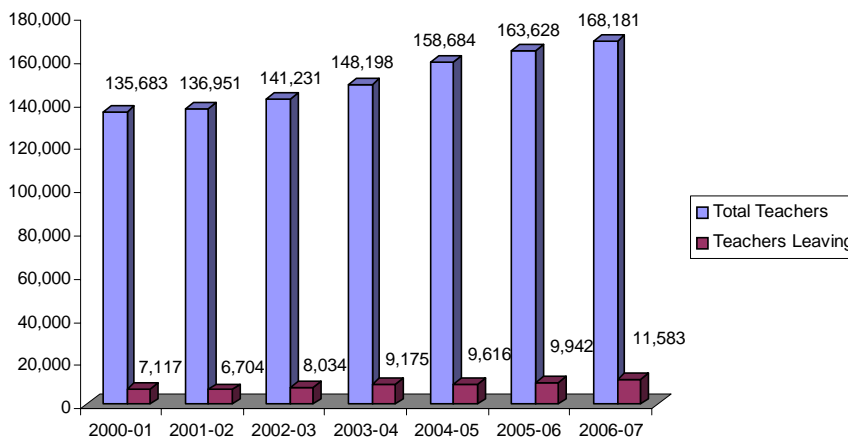
Teacher Exit Interview Data, 2006-07

Background

The Florida Department of Education regularly collects data from school districts regarding classroom teachers leaving teaching in the district and their reasons for leaving. Classroom teachers are regular full-time instructional staff assigned to teach students in classroom situations, including basic instruction, exceptional student education, and vocational-technical education. Prior to 2006-07, the Classroom Teacher Exit Interview was a satellite survey used to collect the number of teachers leaving teaching, the reasons for leaving, and any future plans, if reported. Beginning with the 2006-07 school year, teacher exit data were reported as part of the Automated Staff Information Database, the basis for collection of the majority of data regarding staff in Florida's public school districts. Data in this publication are primarily collected via teacher exit interviews in school districts.

A total of 11,583 (6.9%) teachers left teaching positions in 2006-07. This is an increase of 1,660 teachers (16.7%) since 2005-06. In the last seven years, teachers leaving positions have fluctuated from 4.9 percent of all teachers in 2001-02 to 6.9 percent of all teachers in 2006-07. Table 1 compares the number and percentage of teachers leaving by district in 2005-06 and 2006-07. The number of teachers leaving is compared to the total number of teachers from 2000-01 to 2006-07 in Figure 1 below.

Figure 1: Teachers Leaving Teaching Positions



Florida Department of Education
Dr. Eric Smith, Commissioner

Demographics

Most teachers who left teaching in 2006-07 were white, accounting for 75.8 percent (8,781) of all exiting teachers. More than twice as many black teachers (1,353; 11.7%) exited the profession than Hispanics (652; 5.6%). However, when the racial/ethnic representation of teachers who exited teaching is compared to the racial/ethnic representation of the entire teacher population, the percentages are comparable. See Table 2 for the racial/ethnic categories of exiting teachers in each district. When compared by age, the 25 to 29 age group had the largest number of teachers leaving the profession (2,110). Figures 2a, 2b, and 3 illustrate teachers leaving teaching positions by race and age range, respectively.

Figure 2a: Teachers Leaving Teaching Positions by Race

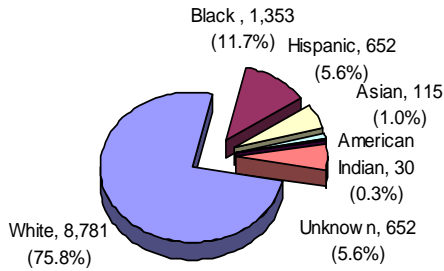


Figure 2b: Total Teacher Population by Race

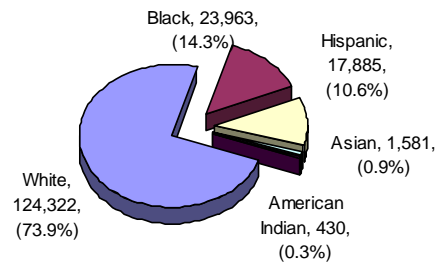
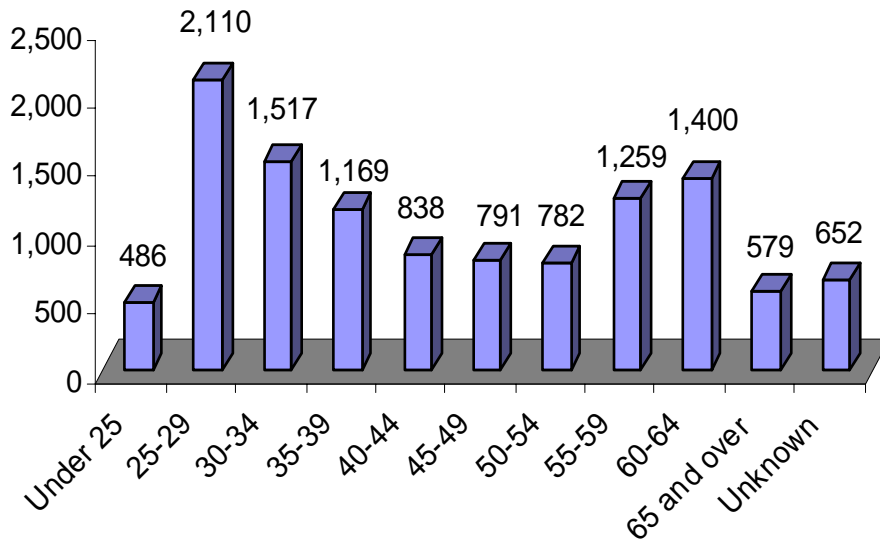


Figure 3: Teachers Leaving Teaching Positions by Age Range



Of Florida's 67 regular school districts, 34 had 10 percent or more of their total teachers exiting. Fifty-one districts had a percentage of their total teachers leaving that was greater than or equal to the state percentage. The following five districts had the highest percentages of teachers leaving teaching: Lafayette (23.2%), Hendry (22.0%), Monroe (20.1%), Glades (18.4%), and Hardee (18.2%).

Experience

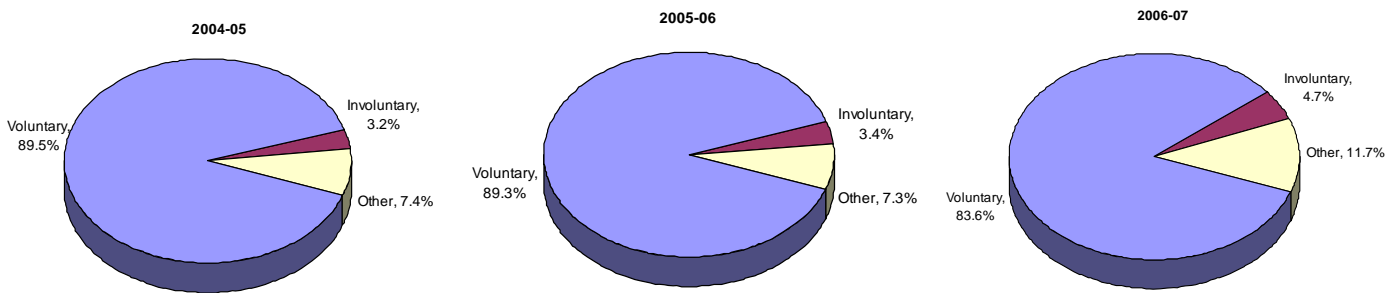
Departing teachers had an average of 8.9 years of teaching experience. Although the number of teachers leaving has steadily increased over the last three years, departing teachers' average years of experience has fluctuated. The table below shows the average years of experience of exiting teachers from 2002-03 through 2006-07. See Table 4 for average years of experience of exiting teachers for each district.

	2006-07	2005-06	2004-05	2003-04	2002-03
Total Teachers	168,181	163,628	158,684	148,198	141,231
Teachers Leaving	11,583	9,942	9,616	9,175	8,034
Average Years of Teaching Service (Teachers Leaving)	8.9	11.2	9.4	10.2	11.8

Reasons for Separation

In 2006-07, 9,689 (83.6%) of exiting teachers exited voluntarily, 544 (4.7%) resigned involuntarily, and 1,350 (11.7%) left for other, unspecified reasons. Refer to Figure 4 for teachers leaving teaching positions by separation category from 2004-05 through 2006-07. Table 5 includes district-level data for exiting teachers by separation category.

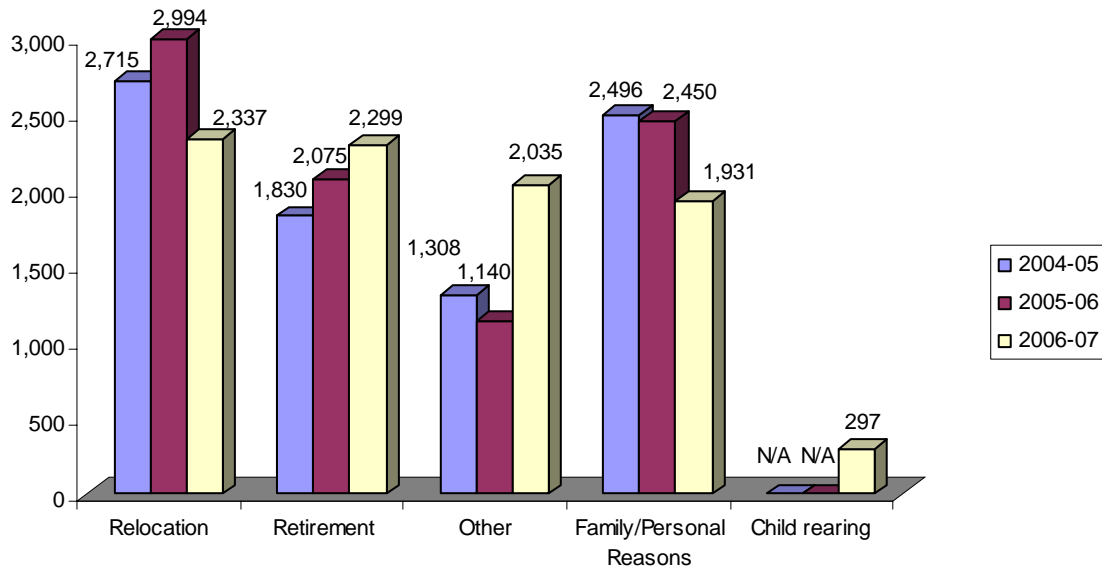
Figure 4: Teachers Leaving Teaching Positions by Separation Category



Voluntary Separations

Teachers who voluntarily left teaching were classified according to the following reasons (respondents could select more than one reason): inadequate salary, lack of opportunity for advancement, dissatisfaction with supervisor, dislike of or unsuitable for assigned duties, resignation in lieu of termination, family/personal reasons, return to continuing education, relocation, retirement, end of temporary assignment, inadequate benefits, stress on the job, other, spousal relocation, child rearing, and entrepreneurship. For 2006-07, most teachers separated from teaching for relocation, retirement, and other unspecified reasons, with family/personal reasons and child rearing rounding out the top five reasons. Figure 5 illustrates the top five reasons for voluntary separations. Refer to Tables 6a through 6c for voluntary separations by district.

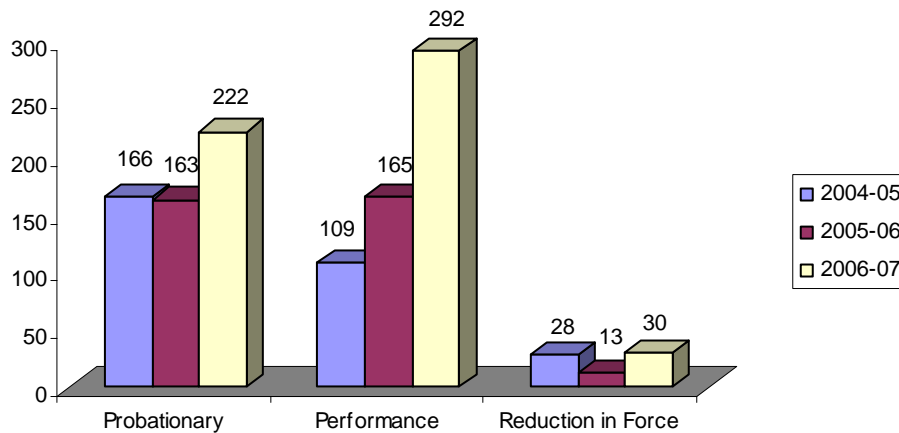
Figure 5: Top Five Reasons for Voluntary Separation



Involuntary Separations

Fewer departing teachers left involuntarily than voluntarily in 2006-07. A total of 222 teachers were terminated at the end of the probationary period, 292 were terminated for performance-related reasons, and 30 were terminated as a result of workforce reduction. Involuntary separation data are illustrated in Figure 6. Refer to Table 7 for involuntary separations by district.

Figure 6: Involuntary Separations



Other Reasons for Separations

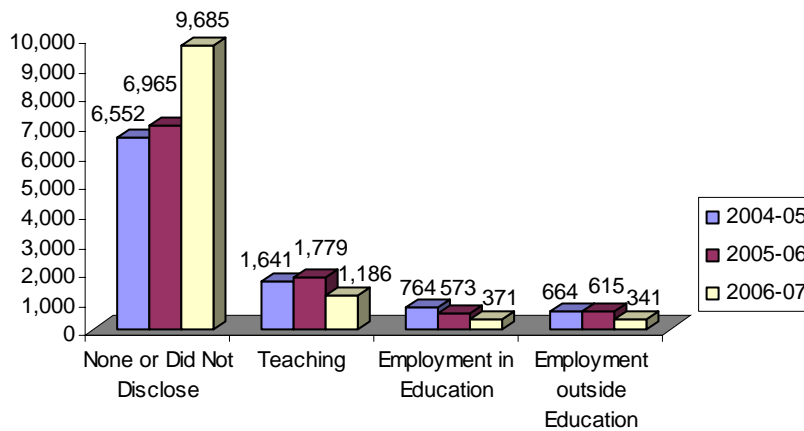
In 2006-07, 1,350 teachers left teaching for other reasons, including job abandonment and death. This data is presented for each district in Table 5.

Future Employment Plans

Exiting teachers were classified according to three broad categories for future employment plans: teaching elsewhere, employment in education (other than teaching), and employment outside education. The majority of exiting teachers either had not accepted employment elsewhere or elected not to disclose their future plans (9,685 or 83.6 percent). Of those who reported employment plans, most indicated they would be teaching in a nonpublic school, in another school district, or outside the state of Florida (1,186 or 62.5 percent). The table below shows detailed information on the future employment plans of exiting teachers from 2004-05 through 2006-07. Refer to Table 8 for future employment plans by district.

	2004-05	2005-06	2006-07
Teaching	1,641	1,779	1,186
Non-public school in same district	343	158	129
Another Florida district	851	991	647
Outside Florida	447	630	410
Employment in Education	764	573	371
Within same district	145	141	88
Another Florida district	455	265	180
Outside Florida	164	167	103
Employment Outside Education	664	615	341
Within same county	345	328	153
Another Florida county	195	176	122
Outside Florida	124	111	66
None or Not Known	6,552	6,965	9,685
Total	9,621	9,932	11,583

Figure 7: Future Employment Plans of Exiting Teachers



The tables on the following pages report teacher exit interview data at the district level. For additional information on staff and teachers in Florida public schools, see the other statistical staff briefs at <http://www.fldoe.org/eias/eiaspubs/default.asp#staff>.

TABLE 1: Comparison of Teachers Separating from Teaching, 2005-06 and 2006-07

<i>DISTRICT</i>	<i>2005-06</i>			<i>2006-07</i>		
	<i>TOTAL TEACHERS OCT 2005</i>	<i>TOTAL SEPARATING FROM TEACHING</i>	<i>% EXITING</i>	<i>TOTAL TEACHERS OCT 2006</i>	<i>TOTAL SEPARATING FROM TEACHING</i>	<i>% EXITING</i>
ALACHUA	1,716	232	13.5%	1,733	258	14.9%
BAKER	284	38	13.4%	296	40	13.5%
BAY	1,738	110	6.3%	1,818	192	10.6%
BRADFORD	254	31	12.2%	261	44	16.9%
BREVARD	4,656	248	5.3%	4,900	123	2.5%
BROWARD	15,974	379	2.4%	15,851	577	3.6%
CALHOUN	170	9	5.3%	171	8	4.7%
CHARLOTTE	1,018	29	2.8%	1,055	117	11.1%
CITRUS	1,028	99	9.6%	1,062	86	8.1%
CLAY	2,211	279	12.6%	2,418	246	10.2%
COLLIER	2,615	299	11.4%	2,807	397	14.1%
COLUMBIA	647	42	6.5%	676	12	1.8%
DADE	21,464	215	1.0%	21,567	93	0.4%
DESOTO	306	45	14.7%	302	38	12.6%
DIXIE	128	9	7.0%	133	19	14.3%
DUVAL	7,686	391	5.1%	7,910	864	10.9%
ESCAMBIA	2,830	218	7.7%	2,917	240	8.2%
FLAGLER	760	72	9.5%	905	94	10.4%
FRANKLIN	88	4	4.5%			
GADSDEN	453	100	22.1%	423	55	13.0%
GILCHRIST	180	22	12.2%	179	30	16.8%
GLADES	86	11	12.8%	87	16	18.4%
GULF	141	26	18.4%	147	17	11.6%
HAMILTON	122	24	19.7%	118	11	9.3%
HARDEE	333	35	10.5%	335	61	18.2%
HENDRY	424	82	19.3%	422	93	22.0%
HERNANDO	1,456	155	10.6%	1,561	123	7.9%
HIGHLANDS	814	51	6.3%	846	66	7.8%
HILLSBOROUGH	11,202	583	5.2%	10,764	368	3.4%
HOLMES	224	30	13.4%	233	26	11.2%
INDIAN RIVER	1,053	53	5.0%	1,094	20	1.8%
JACKSON	479	78	16.3%	505	90	17.8%
JEFFERSON	93	11	11.8%			
LAFAYETTE	69	10	14.5%	69	16	23.2%
LAKE	2,311	187	8.1%	2,410	234	9.7%
LEE	4,376	35	0.8%	4,730	323	6.8%
LEON	2,014	224	11.1%	2,063	231	11.2%
LEVY	392	58	14.8%	398	58	14.6%
LIBERTY	105	9	8.6%	111	10	9.0%
MADISON	173	30	17.3%	172	26	15.1%
MANATEE	2,591	135	5.2%	2,634	69	2.6%
MARION	2,461	263	10.7%	2,635	311	11.8%
MARTIN	1,105	126	11.4%	1,118	88	7.9%
MONROE	605	133	22.0%	617	124	20.1%
NASSAU	650	69	10.6%	694	106	15.3%
OKALOOSA	1,874	214	11.4%	1,921	175	9.1%
OKEECHOBEE	425	84	19.8%	433	78	18.0%
ORANGE	11,073	186	1.7%	11,312	97	0.9%
OSCEOLA	2,770	357	12.9%	2,962	360	12.2%
PALM BEACH	10,779	602	5.6%	11,287	1,698	15.0%
PASCO	4,078	204	5.0%	4,243	159	3.7%
PINELLAS	7,087	622	8.8%	7,289	591	8.1%
POLK	6,158	629	10.2%	6,600	732	11.1%
PUTNAM	714	26	3.6%	738	52	7.0%
ST. JOHNS	1,454	125	8.6%	1,560	127	8.1%
ST. LUCIE	1,924	349	18.1%	2,129	198	9.3%
SANTA ROSA	1,526	159	10.4%	1,607	161	10.0%
SARASOTA	2,956	88	3.0%	2,804	222	7.9%
SEMINOLE	4,139	380	9.2%	4,284	259	6.0%
SUMTER	439	51	11.6%	451	48	10.6%
SUWANNEE	367	30	8.2%	363	40	11.0%
TAYLOR	220	18	8.2%	229	18	7.9%
UNION	190	7	3.7%	186	16	8.6%
VOLUSIA	4,272	351	8.2%	4,612	471	10.2%
WAKULLA	296	39	13.2%	304	8	2.6%
WALTON	449	43	9.6%			
WASHINGTON	260	22	8.5%	268	23	
DEAF/BLIND	171	6	3.5%	168	6	
DOZIER	34	7	20.6%			
FL VIRTUAL	183	13	7.1%			
FAU LAB SCH	34	6	17.6%	38	10	26.3%
FSU CHTR SCH	153	13	8.5%			
FAMU LAB SCH	44	0	0.0%			
UF LAB SCH	74	22	29.7%	66	14	21.2%
STATE TOTAL	163,628	9,942	6.1%	168,181	11,583	6.9%

Table 2: Teachers Separating from Teaching in the District by Race, 2006-07

<i>DISTRICT</i>	<i>WHITE</i>	<i>BLACK</i>	<i>HISPANIC</i>	<i>ASIAN</i>	<i>AM. INDIAN</i>	<i>UNKNOWN</i>	<i>TOTAL</i>	<i>TOTAL TEACHERS</i>	<i>% EXITING</i>
ALACHUA	205	31	10	2		10	258	1,733	14.9%
BAKER	32	2	1			5	40	296	13.5%
BAY	131	16	5	1		39	192	1,818	10.6%
BRADFORD	31	10	2	1			44	261	16.9%
BREVARD	109	7	2	1		4	123	4,900	2.5%
BROWARD	378	126	49	10	4	10	577	15,851	3.6%
CALHOUN	8						8	171	4.7%
CHARLOTTE	108	2	3		3	1	117	1,055	11.1%
CITRUS	83	2	1				86	1,062	8.1%
CLAY	216	17	1			12	246	2,418	10.2%
COLLIER	356	16	22	1		2	397	2,807	14.1%
COLUMBIA	10	1				1	12	676	1.8%
DADE	19	18	21	1		34	93	21,567	0.4%
DESOTO	33	3		1	1		38	302	12.6%
DIXIE	18					1	19	133	14.3%
DUVAL	602	200	39	17	6		864	7,910	10.9%
ESCAMBIA	190	28	4	6	2	10	240	2,917	8.2%
FLAGLER	69	11	9			5	94	905	10.4%
GADSDEN	18	35	1		1		55	423	13.0%
GILCHRIST	28	1				1	30	179	16.8%
GLADES	2					14	16	87	18.4%
GULF	14	3					17	147	11.6%
HAMILTON	9	2					11	118	9.3%
HARDEE	58	3					61	335	18.2%
HENDRY	59	10	18	2		4	93	422	22.0%
HERNANDO	110	4	7	2			123	1,561	7.9%
HIGHLANDS	60	2	2	1	1		66	846	7.8%
HILLSBOROUGH	269	59	27	1	1	11	368	10,764	3.4%
HOLMES	26						26	233	11.2%
INDIAN RIVER	6		1			13	20	1,094	1.8%
JACKSON	80	10					90	505	17.8%
LAFAYETTE	16						16	69	23.2%
LAKE	200	16	15	3			234	2,410	9.7%
LEE	295	14	11	2	1		323	4,730	6.8%
LEON	175	47	7	2			231	2,063	11.2%
LEVY	52	1	1			4	58	398	14.6%
LIBERTY	10						10	111	9.0%
MADISON	16	6	2			2	26	172	15.1%
MANATEE	63	3	1			2	69	2,634	2.6%
MARION	247	34	21	7	2		311	2,635	11.8%
MARTIN	83	4	1				88	1,118	7.9%
MONROE	104	4	11	1		4	124	617	20.1%
NASSAU	91	9	4			2	106	694	15.3%
OKALOOSA	158	11	3	3			175	1,921	9.1%
OKEECHOBEE	72	2	4				78	433	18.0%
ORANGE	70	10	13	3		1	97	11,312	0.9%
OSCEOLA	272	24	60	4			360	2,962	12.2%
PALM BEACH	1138	324	168	29	3	36	1,698	11,287	15.0%
PASCO	147	6	5			1	159	4,243	3.7%
PINELLAS	430	53	17	3	2	86	591	7,289	8.1%
POLK	371	48	24	2	1	286	732	6,600	11.1%
PUTNAM	44	8					52	738	7.0%
ST. JOHNS	115	9	3				127	1,560	8.1%
ST. LUCIE	159	22	15	2			198	2,129	9.3%
SANTA ROSA	158	3					161	1,607	10.0%
SARASOTA	206	10	6				222	2,804	7.9%
SEMINOLE	225	16	13	3	2		259	4,284	6.0%
SUMTER	45	2		1			48	451	10.6%
SUWANNEE	33	6	1				40	363	11.0%
TAYLOR	16	1	1				18	229	7.9%
UNION	15		1				16	186	8.6%
VOLUSIA	367	36	17	3		48	471	4,612	10.2%
WAKULLA	7		1				8	304	2.6%
WASHINGTON	19	4					23	268	8.6%
DEAF/BLIND	6						6	168	3.6%
FAU LAB SCH	8					2	10	38	26.3%
UF LAB SCH	11	1	1			1	14	66	21.2%
STATE TOTAL	8,781	1,353	652	115	30	652	11,583	168,181	6.9%

Table 3: Teachers Separating from Service by Gender, 2006-07

<i>DISTRICT</i>	<i>MALE</i>	<i>FEMALE</i>	<i>UNKNOWN</i>	<i>TOTAL</i>
ALACHUA	70	178	10	258
BAKER	11	24	5	40
BAY	38	115	39	192
BRADFORD	13	31		44
BREVARD	34	85	4	123
BROWARD	136	431	10	577
CALHOUN	2	6		8
CHARLOTTE	31	85	1	117
CITRUS	23	63		86
CLAY	54	180	12	246
COLLIER	108	287	2	397
COLUMBIA	1	10	1	12
DADE	8	51	34	93
DESOTO	9	29		38
DIXIE	6	12	1	19
DUVAL	204	660		864
ESCAMBIA	39	191	10	240
FLAGLER	27	62	5	94
GADSDEN	12	43		55
GILCHRIST	6	23	1	30
GLADES	1	1	14	16
GULF	5	12		17
HAMILTON	4	7		11
HARDEE	21	40		61
HENDRY	26	63	4	93
HERNANDO	37	86		123
HIGHLANDS	16	50		66
HILLSBOROUGH	85	272	11	368
HOLMES	9	17		26
INDIAN RIVER		7	13	20
JACKSON	23	67		90
LAFAYETTE	3	13		16
LAKE	63	171		234
LEE	81	242		323
LEON	39	192		231
LEVY	13	41	4	58
LIBERTY		10		10
MADISON	5	19	2	26
MANATEE	15	52	2	69
MARION	86	225		311
MARTIN	15	73		88
MONROE	29	91	4	124
NASSAU	27	77	2	106
OKALOOSA	38	137		175
OKEECHOBEE	20	58		78
ORANGE	9	87	1	97
OSCEOLA	101	259		360
PALM BEACH	412	1,250	36	1,698
PASCO	36	122	1	159
PINELLAS	126	379	86	591
POLK	104	342	286	732
PUTNAM	17	35		52
ST. JOHNS	24	103		127
ST. LUCIE	55	143		198
SANTA ROSA	38	123		161
SARASOTA	62	160		222
SEMINOLE	61	198		259
SUMTER	7	41		48
SUWANNEE	14	26		40
TAYLOR	4	14		18
UNION	4	12		16
VOLUSIA	91	332	48	471
WAKULLA	2	6		8
WASHINGTON	5	18		23
DEAF/BLIND	2	4		6
FAU LAB SCH	1	7	2	10
UF LAB SCH	3	10	1	14
STATE TOTAL	2,671	8,260	652	11,583

Table 4: Teachers Separating from Service by Age Range and Average Years of Experience, 2006-07

DISTRICT	AGE RANGE										TOTAL	AVG. YEARS EXPERIENCE	
	UNDER 25	25-29	30-34	35-39	40-44	45-49	50-54	55-59	60-64	65 AND OVER			
ALACHUA	15	66	30	20	12	16	20	26	31	12	10	258	11.37
BAKER	3	6	4	3	2	7	7	9	1		5	40	10.65
BAY	7	27	13	14	14	8	17	20	24	9	39	192	12.35
BRADFORD	1	9	7	3	4	2	6	7	4	1	0	44	9.09
BREVARD	3	14	23	14	5	5	4	15	21	15	4	123	14.28
BROWARD	16	88	80	56	41	30	27	61	107	61	10	577	14.16
CALHOUN		1	1		1		1		3	1	0	8	19.25
CHARLOTTE	1	15	10	18	7	15	8	17	18	7	1	117	12.55
CITRUS	2	7	11	15	11	6	7	14	9	4	0	86	10.53
CLAY	4	52	40	17	21	20	16	32	19	13	12	246	9.40
COLLIER	19	63	59	43	25	43	31	42	49	21	2	397	0.13
COLUMBIA			4	3	2	1		1			1	12	3.67
DADE	2	15	11	7	3	6	4	5	2	4	34	93	7.54
DESOTO	2	8	1	5	4	3	4	6	4	1	0	38	9.18
DIXIE		3	3	2	1		1	2	4	2	1	19	12.63
DUVAL	51	208	119	96	73	64	67	79	86	21	0	864	8.14
ESCAMBIA	14	47	34	18	18	14	10	26	43	6	10	240	12.81
FLAGLER	5	18	12	10	10	1	9	12	11	1	5	94	8.19
GADSDEN	10	8	7	6	3	6	6	1	3	5	0	55	6.25
GILCHRIST		3	6	5	3	3	3	3	2	1	1	30	9.37
GLADES			1						1		14	16	3.38
GULF	1	5	2	3	1		2	1	1	1	0	17	8.18
HAMILTON		1	3		1	3		3			0	11	2.64
HARDEE	4	16	10	4	3	2	5	8	7	2	0	61	4.61
HENDRY	5	13	13	7	7	9	8	9	14	4	4	93	3.90
HERNANDO	5	29	12	15	7	11	12	10	17	5	0	123	8.30
HIGHLANDS		17	6	4	2	7	4	12	8	6	0	66	13.53
HILLSBOROUGH	3	12	10	4	7	12	14	90	140	65	11	368	23.06
HOLMES		3	2	3	2	2	4	4	5	1	0	26	15.27
INDIAN RIVER			2	2	1		1	1			13	20	12.35
JACKSON	8	25	14	5	1	9	4	17	6	1	0	90	10.09
LAFAYETTE	1	3	4			1	2	2	3		0	16	11.13
LAKE	10	31	36	32	22	9	23	24	28	19	0	234	10.26
LEE	23	69	50	38	19	21	17	37	36	13	0	323	8.78
LEON	18	71	27	28	14	7	8	26	24	8	0	231	9.18
LEVY	3	11	3	9	5	3	6	6	7	1	4	58	9.24
LIBERTY	1	1	1	1	1	1	1	4	1		0	10	13.80
MADISON		6	1	1	2	2	3	4	5		2	26	13.04
MANATEE	2	20	5	4	5	2	7	13	7	2	2	69	9.07
MARION	21	55	45	30	23	24	23	42	33	15	0	311	9.76
MARTIN	4	16	11	12	11	5	7	14	7	1	0	88	0.00
MONROE	3	27	14	13	11	9	10	19	10	4	4	124	7.60
NASSAU	4	18	16	14	7	8	11	7	16	3	2	106	9.15
OKALOOSA	4	26	20	13	12	14	12	31	36	7	0	175	13.82
OKEECHOBEE	7	16	10	7	9	2	7	12	6	2	0	78	11.24
ORANGE	2	35	16	10	8	3	6	4	8	4	1	97	7.32
OSCEOLA	18	91	69	43	22	30	18	29	29	11	0	360	7.33
PALM BEACH	60	326	274	223	155	147	127	162	124	64	36	1,698	5.89
PASCO	5	39	23	21	12	7	10	12	18	11	1	159	3.01
PINELLAS	12	73	56	54	41	45	46	67	78	33	86	591	12.99
POLK	21	99	65	50	39	32	35	31	51	23	286	732	7.23
PUTNAM	1	9	3	7	7	4	5	4	9	3	0	52	11.38
ST. JOHNS	6	17	18	13	7	14	14	18	17	3	0	127	6.61
ST. LUCIE	12	34	34	22	12	15	17	20	24	8	0	198	8.86
SANTA ROSA	12	27	26	13	18	12	11	21	16	5	0	161	10.98
SARASOTA	4	32	24	27	18	15	13	27	42	20	0	222	12.85
SEMINOLE	12	56	40	27	18	16	19	26	33	12	0	259	11.05
SUMTER	3	11	5	3	5	1		7	11	2	0	48	9.98
SUWANNEE	3	5	8	2	3	2		5	9	3	0	40	8.40
TAYLOR			4	2	1	2		4	4	1	0	18	13.00
UNION	1	6	1	1	2	1	1		1	2	0	16	3.38
VOLUSIA	27	87	52	43	30	29	26	40	60	29	48	471	0.15
WAKULLA	2	2		1				2	1		0	8	12.00
WASHINGTON	1	5	2	3	3	1	1	5	2		0	23	8.48
DEAF/BLIND		1		2			1		2		0	6	18.17
FAU LAB SCH	1	2	2		1	1		1			2	10	4.90
UF LAB SCH	1	4	2	1	1	1	1		2		1	14	10.07
STATE TOTAL	486	2,110	1,517	1,169	838	791	782	1,259	1,400	579	652	11,583	8.91

Table 5: Teachers Separating from Service by Separation Category, 2006-07

<i>DISTRICT</i>	<i>VOLUNTARY NUMBER</i>	<i>VOLUNTARY % OF TOTAL</i>	<i>INVOLUNTARY NUMBER</i>	<i>INVOLUNTARY % OF TOTAL</i>	<i>OTHER NUMBER</i>	<i>OTHER % OF TOTAL</i>	<i>TOTAL (NUMBER)</i>
ALACHUA	183	70.9%	0	0.0%	75	29.1%	258
BAKER	33	82.5%	7	17.5%	0	0.0%	40
BAY	171	89.1%	16	8.3%	5	2.6%	192
BRADFORD	40	90.9%	4	9.1%	0	0.0%	44
BREVARD	110	89.4%	10	8.1%	3	2.4%	123
BROWARD	577	100.0%	0	0.0%	0	0.0%	577
CALHOUN	7	87.5%	1	12.5%	0	0.0%	8
CHARLOTTE	112	95.7%	3	2.6%	2	1.7%	117
CITRUS	72	83.7%	4	4.7%	10	11.6%	86
CLAY	224	91.1%	22	8.9%	0	0.0%	246
COLLIER	321	80.9%	4	1.0%	72	18.1%	397
COLUMBIA	11	91.7%	0	0.0%	1	8.3%	12
DADE	89	95.7%	0	0.0%	4	4.3%	93
DESOTO	34	89.5%	4	10.5%	0	0.0%	38
DIXIE	12	63.2%	6	31.6%	1	5.3%	19
DUVAL	711	82.3%	18	2.1%	135	15.6%	864
ESCAMBIA	234	97.5%	5	2.1%	1	0.4%	240
FLAGLER	60	63.8%	11	11.7%	23	24.5%	94
GADSDEN	45	81.8%	3	5.5%	7	12.7%	55
GILCHRIST	24	80.0%	6	20.0%	0	0.0%	30
GLADES	16	100.0%	0	0.0%	0	0.0%	16
GULF	16	94.1%	1	5.9%	0	0.0%	17
HAMILTON	6	54.5%	5	45.5%	0	0.0%	11
HARDEE	55	90.2%	4	6.6%	2	3.3%	61
HENDRY	79	84.9%	14	15.1%	0	0.0%	93
HERNANDO	119	96.7%	1	0.8%	3	2.4%	123
HIGHLANDS	47	71.2%	4	6.1%	15	22.7%	66
HILLSBOROUGH	366	99.5%	0	0.0%	2	0.5%	368
HOLMES	22	84.6%	3	11.5%	1	3.8%	26
INDIAN RIVER	17	85.0%	3	15.0%	0	0.0%	20
JACKSON	53	58.9%	0	0.0%	37	41.1%	90
LAFAYETTE	15	93.8%	1	6.3%	0	0.0%	16
LAKE	232	99.1%	2	0.9%	0	0.0%	234
LEE	306	94.7%	6	1.9%	11	3.4%	323
LEON	136	58.9%	1	0.4%	94	40.7%	231
LEVY	51	87.9%	5	8.6%	2	3.4%	58
LIBERTY	8	80.0%	2	20.0%	0	0.0%	10
MADISON	19	73.1%	6	23.1%	1	3.8%	26
MANATEE	54	78.3%	11	15.9%	4	5.8%	69
MARION	277	89.1%	12	3.9%	22	7.1%	311
MARTIN	70	79.5%	5	5.7%	13	14.8%	88
MONROE	87	70.2%	4	3.2%	33	26.6%	124
NASSAU	89	84.0%	17	16.0%	0	0.0%	106
OKALOOSA	172	98.3%	3	1.7%	0	0.0%	175
OKEECHOBEE	74	94.9%	4	5.1%	0	0.0%	78
ORANGE	97	100.0%	0	0.0%	0	0.0%	97
OSCEOLA	225	62.5%	45	12.5%	90	25.0%	360
PALM BEACH	1,511	89.0%	187	11.0%	0	0.0%	1,698
PASCO	132	83.0%	0	0.0%	27	17.0%	159
PINELLAS	580	98.1%	11	1.9%	0	0.0%	591
POLK	123	16.8%	0	0.0%	609	83.2%	732
PUTNAM	42	80.8%	9	17.3%	1	1.9%	52
ST. JOHNS	118	92.9%	9	7.1%	0	0.0%	127
ST. LUCIE	188	94.9%	7	3.5%	3	1.5%	198
SANTA ROSA	138	85.7%	2	1.2%	21	13.0%	161
SARASOTA	208	93.7%	9	4.1%	5	2.3%	222
SEMINOLE	257	99.2%	1	0.4%	1	0.4%	259
SUMTER	42	87.5%	5	10.4%	1	2.1%	48
SUWANNEE	29	72.5%	9	22.5%	2	5.0%	40
TAYLOR	18	100.0%	0	0.0%	0	0.0%	18
UNION	16	100.0%	0	0.0%	0	0.0%	16
VOLUSIA	462	98.1%	9	1.9%	0	0.0%	471
WAKULLA	8	100.0%	0	0.0%	0	0.0%	8
WASHINGTON	14	60.9%	3	13.0%	6	26.1%	23
DEAF/BLIND	6	100.0%	0	0.0%	0	0.0%	6
FAU LAB SCH	5	50.0%	0	0.0%	5	50.0%	10
UF LAB SCH	14	100.0%	0	0.0%	0	0.0%	14
STATE TOTAL	9,689	83.6%	544	4.7%	1,350	11.7%	11,583

Table 6a: Teachers Voluntarily Separating from Service by Reason, 2006-07

<i>DISTRICT</i>	<i>INADEQUATE SALARY</i>	<i>LACK OF OPPORTUNITY FOR ADVANCEMENT</i>	<i>DISSATISFACTION WITH SUPERVISOR</i>	<i>DISLIKE/ UNSUITABILITY FOR ASSIGNED DUTIES</i>	<i>RESIGNATION IN LIEU OF TERMINATION</i>	<i>FAMILY/ PERSONAL REASONS</i>
ALACHUA	1	0	0	1	0	59
BAKER	0	0	0	1	1	6
BAY	10	1	0	2	3	60
BRADFORD	5	6	0	1	2	3
BREVARD	0	0	0	1	2	16
BROWARD	3	0	0	3	41	165
CALHOUN	0	0	0	0	1	0
CHARLOTTE	3	3	0	1	0	21
CITRUS	4	1	0	1	2	16
CLAY	3	4	0	7	20	11
COLLIER	16	3	9	3	18	92
COLUMBIA	0	0	0	1	0	8
DADE	5	2	0	1	1	21
DESOTO	0	1	0	1	0	0
DIXIE	0	0	0	2	0	1
DUVAL	10	8	16	8	15	58
ESCAMBIA	7	0	1	0	0	42
FLAGLER	0	0	0	0	0	28
GADSDEN	3	0	0	1	9	8
GILCHRIST	1	1	0	1	0	7
GLADES	1	6	1	0	2	0
GULF	0	0	0	0	0	6
HAMILTON	0	0	0	0	1	2
HARDEE	0	0	0	0	1	0
HENDRY	9	1	0	0	35	10
HERNANDO	6	0	0	1	1	20
HIGHLANDS	0	0	0	0	0	14
HILLSBOROUGH	10	2	9	5	2	17
HOLMES	6	1	0	0	0	4
INDIAN RIVER	0	0	0	0	0	8
JACKSON	0	0	0	0	0	2
LAFAYETTE	0	0	0	0	0	4
LAKE	6	4	4	8	2	66
LEE	0	0	1	1	1	105
LEON	1	0	1	1	1	22
LEVY	0	0	0	0	0	19
LIBERTY	0	0	0	1	0	1
MADISON	8	1	3	2	3	3
MANATEE	0	0	0	0	1	3
MARION	8	2	6	4	7	52
MARTIN	4	0	1	0	6	20
MONROE	0	0	1	1	0	30
NASSAU	2	0	0	1	1	37
OKALOOSA	0	0	0	0	2	75
OKEECHOBEE	0	0	0	2	0	13
ORANGE	6	5	6	4	1	57
OSCEOLA	8	2	4	3	3	14
PALM BEACH	20	1	4	4	6	182
PASCO	2	0	4	5	0	38
PINELLAS	0	0	0	1	0	90
POLK	0	0	0	0	0	0
PUTNAM	4	1	0	1	2	4
ST. JOHNS	1	0	0	0	1	51
ST. LUCIE	16	4	2	2	13	53
SANTA ROSA	5	1	0	3	1	25
SARASOTA	4	1	6	2	1	8
SEMINOLE	0	1	1	0	0	84
SUMTER	1	0	1	2	9	5
SUWANNEE	0	0	0	0	0	8
TAYLOR	0	0	0	0	0	0
UNION	4	1	1	1	3	15
VOLUSIA	2	1	1	1	0	127
WAKULLA	0	0	0	0	0	2
WASHINGTON	0	2	0	0	0	3
DEAF/BLIND	1	0	0	0	0	0
FAU LAB SCH	0	0	0	0	0	3
UF LAB SCH	0	0	0	0	0	7
STATE TOTAL	206	67	83	92	221	1,931

Table 6b: Teachers Voluntarily Separating from Service by Reason, 2006-07 (continued)

<i>DISTRICT</i>	<i>CONTINUING EDUCATION</i>	<i>RELOCATION</i>	<i>RETIREMENT</i>	<i>END OF TEMPORARY ASSIGNMENT</i>	<i>INADEQUATE BENEFITS</i>	<i>STRESS ON THE JOB</i>
ALACHUA	9	43	10	0	0	7
BAKER	1	7	8	0	1	1
BAY	8	53	48	0	0	2
BRADFORD	0	8	10	1	1	2
BREVARD	4	30	47	0	0	2
BROWARD	12	144	187	0	0	0
CALHOUN	0	0	4	0	0	0
CHARLOTTE	1	32	27	0	0	2
CITRUS	4	27	16	0	2	2
CLAY	0	12	42	0	74	1
COLLIER	16	105	48	2	6	10
COLUMBIA	0	4	0	0	0	0
DADE	7	43	5	1	0	1
DESOTO	0	1	6	0	13	0
DIXIE	0	5	4	0	0	0
DUVAL	14	58	147	0	1	31
ESCAMBIA	1	109	71	0	0	4
FLAGLER	0	17	13	0	0	1
GADSDEN	0	8	5	0	1	0
GILCHRIST	0	7	6	0	0	0
GLADES	0	0	3	0	0	0
GULF	0	5	3	0	0	0
HAMILTON	0	2	1	0	0	0
HARDEE	1	27	8	12	0	0
HENDRY	0	16	6	0	0	1
HERNANDO	4	68	23	0	1	2
HIGHLANDS	0	15	17	0	0	0
HILLSBOROUGH	1	14	312	0	1	13
HOLMES	0	5	9	1	1	0
INDIAN RIVER	0	0	1	0	0	0
JACKSON	1	10	14	0	1	0
LAFAYETTE	0	5	3	1	0	0
LAKE	5	94	41	24	0	7
LEE	4	89	45	0	0	4
LEON	10	49	37	2	0	2
LEVY	0	22	7	1	0	0
LIBERTY	0	2	4	0	0	0
MADISON	0	0	5	0	0	0
MANATEE	0	0	16	1	21	0
MARION	11	64	50	53	3	15
MARTIN	3	17	13	0	0	5
MONROE	0	48	9	0	0	1
NASSAU	0	30	21	0	4	0
OKALOOSA	8	13	65	0	0	0
OKEECHOBEE	2	19	15	0	0	0
ORANGE	5	14	7	1	1	9
OSCEOLA	1	14	38	0	78	0
PALM BEACH	16	341	143	2	0	10
PASCO	5	54	16	2	0	4
PINELLAS	10	151	173	6	0	0
POLK	0	0	123	0	0	0
PUTNAM	2	13	12	0	2	4
ST. JOHNS	2	13	27	1	0	0
ST. LUCIE	9	65	27	3	8	21
SANTA ROSA	5	52	36	2	1	2
SARASOTA	1	4	69	0	2	9
SEMINOLE	8	89	65	0	0	2
SUMTER	3	6	8	1	0	2
SUWANNEE	2	7	5	5	0	0
TAYLOR	0	9	8	0	0	0
UNION	0	13	2	7	0	0
VOLUSIA	6	153	98	1	0	0
WAKULLA	0	4	2	1	0	0
WASHINGTON	0	4	4	0	0	0
DEAF/BLIND	1	0	2	0	0	0
FAU LAB SCH	0	1	0	0	0	0
UF LAB SCH	0	3	2	0	0	0
STATE TOTAL	203	2,337	2,299	131	223	179

Table 6c: Teachers Voluntarily Separating from Service by Reason, 2006-07 (continued)

<i>DISTRICT</i>	<i>OTHER</i>	<i>SPOUSAL RELOCATION</i>	<i>CHILD REARING</i>	<i>ENTREPRENEURSHIP</i>	<i>TOTAL</i>
ALACHUA	0	0	0	0	130
BAKER	3	0	0	4	29
BAY	8	9	11	0	204
BRADFORD	3	0	1	0	42
BREVARD	5	10	1	1	117
BROWARD	64	0	0	0	619
CALHOUN	0	0	0	0	5
CHARLOTTE	22	3	3	0	115
CITRUS	14	0	0	0	89
CLAY	0	0	62	31	174
COLLIER	93	0	0	0	421
COLUMBIA	0	0	0	0	13
DADE	16	0	0	0	103
DESOTO	1	0	6	5	23
DIXIE	0	0	0	0	12
DUVAL	413	5	5	0	784
ESCAMBIA	4	4	4	0	243
FLAGLER	0	0	1	0	59
GADSDEN	9	0	0	0	44
GILCHRIST	5	1	2	0	29
GLADES	0	3	0	0	16
GULF	2	0	0	0	16
HAMILTON	0	0	0	0	6
HARDEE	2	0	2	0	51
HENDRY	2	0	0	0	80
HERNANDO	10	2	1	0	138
HIGHLANDS	1	0	0	0	47
HILLSBOROUGH	35	0	0	0	421
HOLMES	1	0	1	0	28
INDIAN RIVER	7	0	1	0	16
JACKSON	24	0	1	0	52
LAFAYETTE	2	0	0	0	15
LAKE	6	0	3	0	267
LEE	56	0	0	0	306
LEON	23	0	0	0	149
LEVY	2	0	0	0	51
LIBERTY	0	0	0	0	8
MADISON	0	0	0	0	25
MANATEE	0	0	7	5	42
MARION	46	4	6	3	325
MARTIN	10	0	0	0	79
MONROE	3	0	0	0	93
NASSAU	10	2	1	0	108
OKALOOSA	2	6	1	0	171
OKEECHOBEE	14	5	3	0	70
ORANGE	14	0	0	0	130
OSCEOLA	2	0	39	23	167
PALM BEACH	782	0	0	0	1,511
PASCO	16	3	2	2	149
PINELLAS	132	0	0	0	563
POLK	0	0	0	0	123
PUTNAM	8	0	0	0	53
ST. JOHNS	6	0	1	0	102
ST. LUCIE	17	0	0	0	240
SANTA ROSA	13	0	0	0	146
SARASOTA	18	9	116	1	134
SEMINOLE	26	7	0	0	283
SUMTER	9	0	0	0	47
SUWANNEE	0	1	1	0	28
TAYLOR	0	0	0	0	17
UNION	9	7	1	1	63
VOLUSIA	58	0	14	2	448
WAKULLA	0	0	0	0	9
WASHINGTON	1	0	0	0	14
DEAF/BLIND	3	0	0	0	7
FAU LAB SCH	1	0	0	0	5
UF LAB SCH	2	0	0	0	14
STATE TOTAL	2,035	81	297	78	10,463

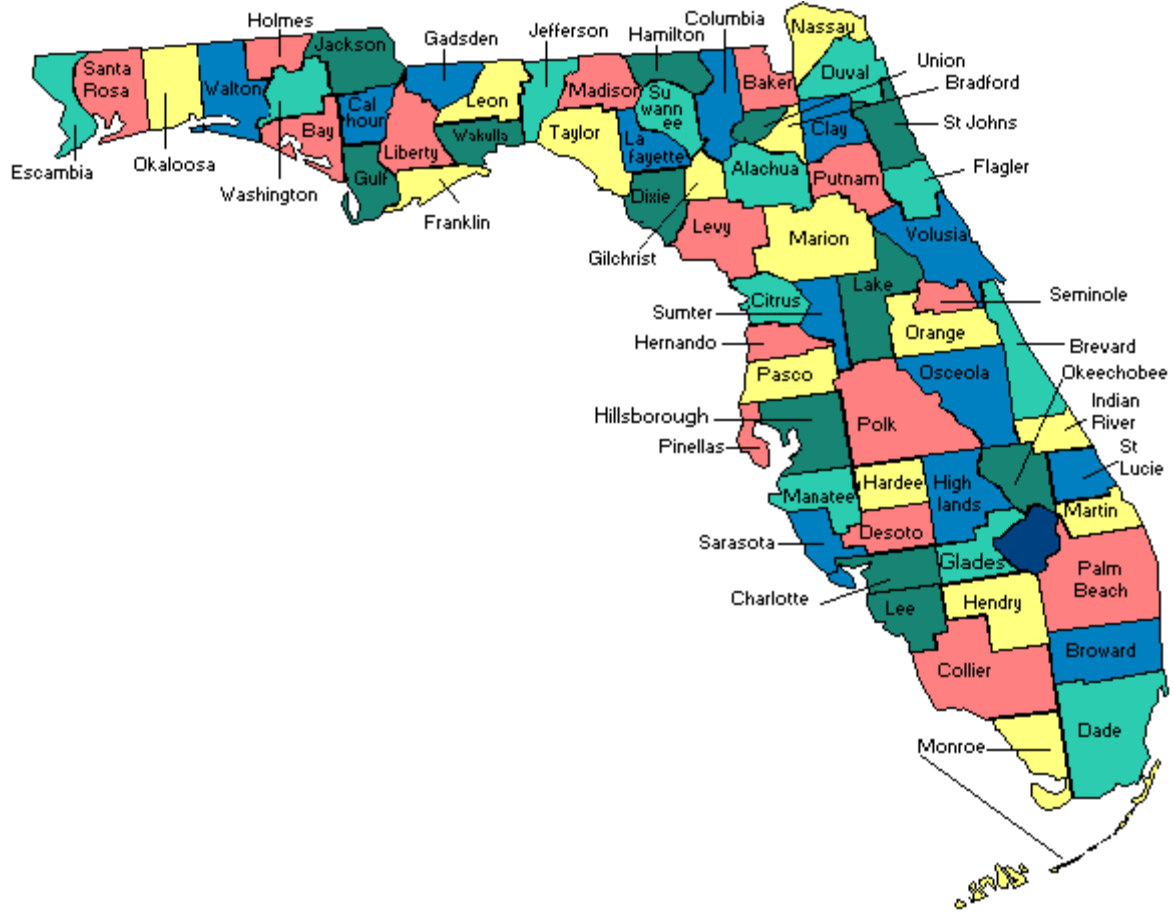
Table 7: Teachers Involuntarily Separating from Service by Reason, 2006-07

<i>DISTRICT</i>	<i>PROBATIONARY</i>	<i>PERFORMANCE</i>	<i>REDUCTION IN FORCE</i>	<i>TOTAL</i>
ALACHUA	0	0	0	0
BAKER	5	2		7
BAY	13	0	3	16
BRADFORD	0	1	3	4
BREVARD	2	7	1	10
BROWARD	0	0	0	0
CALHOUN	0	0	1	1
CHARLOTTE	2	1	0	3
CITRUS	0	3	1	4
CLAY	4	18	0	22
COLLIER	4	0	0	4
COLUMBIA	0	0	0	0
DADE	0	0	0	0
DESOTO	0	4	0	4
DIXIE	5	1	0	6
DUVAL	14	4	0	18
ESCAMBIA	5	0	0	5
FLAGLER	10	1	0	11
GADSDEN	0	3	0	3
GILCHRIST	4	2	0	6
GLADES	0	0	0	0
GULF	0	1	0	1
HAMILTON	4	0	1	5
HARDEE	4	0	0	4
HENDRY	0	14	0	14
HERNANDO	1	0	0	1
HIGHLANDS	3	1	0	4
HILLSBOROUGH	0	0	0	0
HOLMES	3	0	0	3
INDIAN RIVER	3	0	0	3
JACKSON	0	0	0	0
LAFAYETTE	0	1	0	1
LAKE	1	0	1	2
LEE	4	2	0	6
LEON	1	0	0	1
LEVY	4	0	1	5
LIBERTY	0	2	0	2
MADISON	0	6	0	6
MANATEE	4	1	6	11
MARION	5	7	0	12
MARTIN	1	4	0	5
MONROE	3	1	0	4
NASSAU	9	5	3	17
OKALOOSA	0	1	2	3
OKEECHOBEE	4	0	0	4
ORANGE	0	0	0	0
OSCEOLA	15	30	0	45
PALM BEACH	41	143	3	187
PASCO	0	0	0	0
PINELLAS	11	0	0	11
POLK	0	0	0	0
PUTNAM	0	9	0	9
ST. JOHNS	4	4	1	9
ST. LUCIE	7	0	0	7
SANTA ROSA	2	0	0	2
SARASOTA	4	3	2	9
SEMINOLE	1	0	0	1
SUMTER	3	2	0	5
SUWANNEE	0	8	1	9
TAYLOR	0	0	0	0
UNION	0	0	0	0
VOLUSIA	9	0	0	9
WAKULLA	0	0	0	0
WASHINGTON	3	0	0	3
DEAF/BLIND	0	0	0	0
FAU LAB SCH	0	0	0	0
UF LAB SCH	0	0	0	0
STATE TOTAL	222	292	30	544

Table 8: Teachers Separating from Service by Future Employment Plans, 2006-07

<i>DISTRICT</i>	<i>EMPLOYMENT IN</i>				<i>TOTAL</i>
	<i>NONE OR DID NOT DISCLOSE</i>	<i>TEACHING</i>	<i>EDUCATION OTHER THAN TEACHING</i>	<i>EMPLOYMENT OUTSIDE EDUCATION</i>	
ALACHUA	224	34	0	0	258
BAKER	33	5	1	1	40
BAY	149	14	15	14	192
BRADFORD	22	17	5	0	44
BREVARD	80	18	17	8	123
BROWARD	434	107	0	36	577
CALHOUN	5	0	3	0	8
CHARLOTTE	66	35	10	6	117
CITRUS	61	13	5	7	86
CLAY	194	32	12	8	246
COLLIER	310	63	11	13	397
COLUMBIA	11	0	0	1	12
DADE	42	24	13	14	93
DESOTO	22	11	4	1	38
DIXIE	14	3	1	1	19
DUVAL	757	68	8	31	864
ESCAMBIA	190	27	10	13	240
FLAGLER	80	7	6	1	94
GADSDEN	32	12	7	4	55
GILCHRIST	19	5	1	5	30
GLADES	16	0	0	0	16
GULF	11	4	1	1	17
HAMILTON	8	3	0	0	11
HARDEE	29	26	2	4	61
HENDRY	70	21	2	0	93
HERNANDO	77	37	6	3	123
HIGHLANDS	53	2	8	3	66
HILLSBOROUGH	317	14	23	14	368
HOLMES	14	10	1	1	26
INDIAN RIVER	20	0	0	0	20
JACKSON	82	7	0	1	90
LAFAYETTE	7	3	5	1	16
LAKE	158	40	28	8	234
LEE	321	0	1	1	323
LEON	197	24	4	6	231
LEVY	40	11	3	4	58
LIBERTY	6	0	2	2	10
MADISON	13	7	1	5	26
MANATEE	58	5	3	3	69
MARION	227	50	10	24	311
MARTIN	63	17	4	4	88
MONROE	116	4	2	2	124
NASSAU	94	8	0	4	106
OKALOOSA	140	23	9	3	175
OKEECHOBEE	57	15	2	4	78
ORANGE	72	12	8	5	97
OSCEOLA	266	74	6	14	360
PALM BEACH	1,698	0	0	0	1,698
PASCO	111	32	7	9	159
PINELLAS	591	0	0	0	591
POLK	732	0	0	0	732
PUTNAM	32	9	5	6	52
ST. JOHNS	120	2	2	3	127
ST. LUCIE	140	6	47	5	198
SANTA ROSA	123	19	13	6	161
SARASOTA	208	10	2	2	222
SEMINOLE	209	23	13	14	259
SUMTER	30	11	3	4	48
SUWANNEE	23	9	6	2	40
TAYLOR	10	0	8	0	18
UNION	5	9	0	2	16
VOLUSIA	341	126	2	2	471
WAKULLA	5	2	0	1	8
WASHINGTON	12	9	1	1	23
DEAF/BLIND	4	0	0	2	6
FAU LAB SCH	7	3	0	0	10
UF LAB SCH	7	4	2	1	14
STATE TOTAL	9,685	1,186	371	341	11,583

FLORIDA SCHOOL DISTRICTS



This report was designed and prepared in the [Bureau of Education Information and Accountability Services, Florida Department of Education](#). For further information, contact Education Information and Accountability Services, 852 Turlington Bldg., 325 West Gaines Street, Tallahassee, Florida 32399-0400, or call (850) 245-0400 or Suncom 205-0400, or send e-mail to askeias@fldoe.org