

Statistical Brief

Series 2008-12B

JANUARY 2008

IN THIS ISSUE:

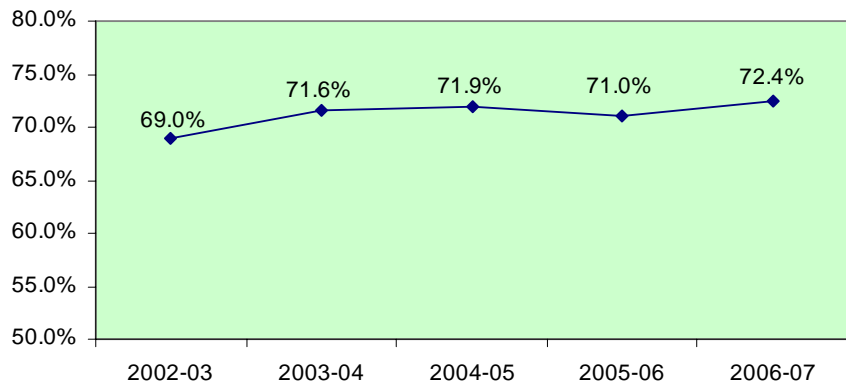
- Figure 1: Graduation Rates, 2002-03 through 2006-07
- Table 1: Graduation Rates by Race, 2002-03 through 2006-07
- Figure 2: Graduation Rates by Race, 2002-03 through 2006-07
- Table 2: District Graduation Rates, 2002-03 to 2006-07
- Table 3a: District Graduation Rates by Race, 2005-06 and 2006-07
- Table 3b: District Graduation Rates by Race, 2005-06 and 2006-07
- Table 4: Percent Change in Graduation Rates, 2005-06 to 2006-07

Florida Public High School Graduation Rates, 2006-07

Florida's high school graduation rate remained fairly constant during the past five years, fluctuating from a low of 69.0 percent in 2002-03 to a high of 72.4 percent in 2006-07.

FIGURE 1:

Four-Year Graduation Rate, 2002-03 through 2006-07



Florida's graduation rate measures the percentage of students who graduate within four years of their first enrollment in 9th grade. Subsequent to their enrollment in 9th grade, exiting transfers and deceased students are removed from the calculation. Entering transfer students are included in the count of the class with which they are scheduled to graduate, based on date of enrollment. Only recipients of diplomas are counted as graduates. Table 2 on p. 3 shows Florida's high school graduation rates by district from 2002-03 through 2006-07.

Additional information on how graduation rates are calculated can be found at <http://www.fldoe.org/eias/eiaspubs/pdf/gradgde.pdf>. If you have further questions regarding the content of this publication, please contact the Florida Department of Education, office of Education Information and Accountability Services, at (850) 245-0400, SunCom 205-0400, or email askeias@fldoe.org.



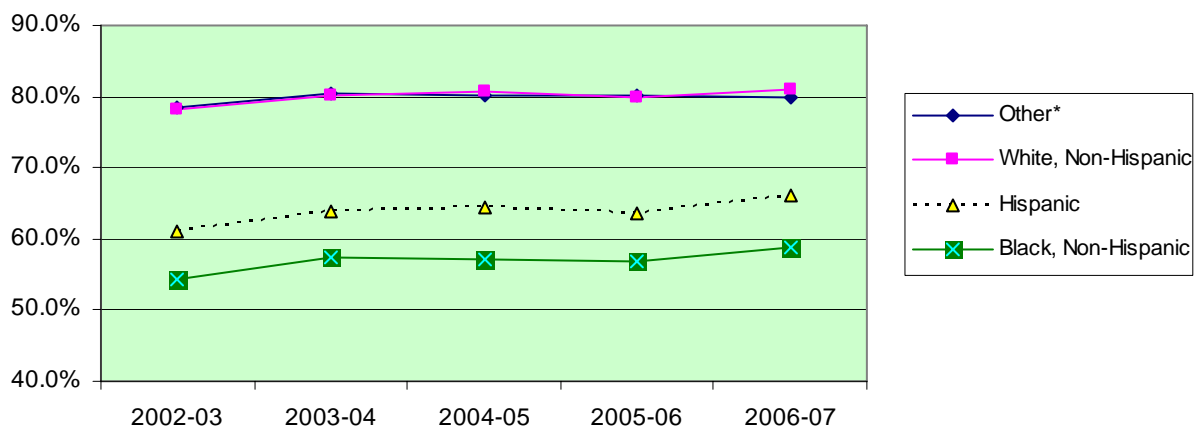
Table 1 shows state level graduation rates by race from 2002-03 through 2006-07. Although graduation rates of some ethnic groups decreased from 2005-06 to 2006-07, graduation rates among all racial/ethnic groups increased since 2002-03.

**Table 1:
Graduation Rates by Race, 2002-03 through 2006-07**

	White, Non-Hispanic	Black, Non-Hispanic	Hispanic	Asian/Pacific Islander	American Indian/Alaskan Native	Multiracial	Total
2002-03	78.1%	54.2%	61.1%	81.0%	72.1%	73.8%	69.0%
2003-04	80.2%	57.3%	64.0%	82.3%	73.2%	78.1%	71.6%
2004-05	80.8%	57.1%	64.5%	82.2%	73.3%	77.7%	71.9%
2005-06	79.9%	56.9%	63.7%	83.2%	75.7%	75.9%	71.0%
2006-07	81.0%	58.7%	66.0%	83.2%	74.7%	75.4%	72.4%

Figure 2 shows the growth in graduation rates among the largest ethnic groups from 2002-03 through 2006-07. Of the three most populous groups, Hispanic population showed the highest increase (4.9%) in the graduation rate during the period. During the same period, the graduation rate of the white, non-Hispanic population increased by 2.9 percent, and the graduation rate of the black, non-Hispanic population increased by 4.5 percent. Of the three less populous groups, the American Indian/Alaskan Native population showed the highest increase (2.6%). Combined, these three ethnic groups (Asian/Pacific Islander, American Indian/Alaskan Native, and multiracial) showed an increase of 1.3 percent.

**Figure 2:
Graduation Rates by Race
2002-03 through 2006-07**



* "Other" combines Asian/Pacific Islander, American Indian/Alaskan Native, and multiracial students.

Graduation rates by race are shown for each district in Tables 3a and 3b on pp. 4-5.

Table 2
Graduation Rates, 2002-03 through 2006-07*

District	2002-03	2003-04	2004-05	2005-06	2006-07
01 Alachua	67.5%	68.8%	69.6%	69.8%	68.2%
02 Baker	67.3%	68.2%	72.2%	73.1%	77.9%
03 Bay	76.6%	75.4%	78.1%	77.5%	78.7%
04 Bradford	74.7%	70.5%	76.1%	69.5%	70.7%
05 Brevard	88.4%	91.7%	91.5%	90.7%	92.1%
06 Broward	62.7%	66.2%	67.1%	67.8%	66.3%
07 Calhoun	87.8%	90.5%	94.3%	89.6%	82.5%
08 Charlotte	68.0%	80.4%	76.7%	78.0%	81.6%
09 Citrus	75.3%	76.9%	73.3%	73.2%	76.1%
10 Clay	75.4%	73.8%	75.1%	73.8%	75.3%
11 Collier	67.6%	72.5%	74.3%	74.7%	73.6%
12 Columbia	73.1%	75.6%	74.7%	67.4%	74.1%
13 Dade	57.9%	60.6%	59.9%	59.2%	63.9%
14 DeSoto	66.2%	66.3%	63.5%	70.0%	70.5%
15 Dixie	63.8%	72.8%	66.5%	70.4%	75.3%
16 Duval	63.7%	67.2%	65.5%	60.5%	64.3%
17 Escambia	64.9%	71.3%	73.2%	74.8%	75.2%
18 Flagler	81.3%	79.4%	79.7%	78.4%	77.1%
19 Franklin	72.8%	71.1%	80.0%	60.7%	56.5%
20 Gadsden	48.1%	43.1%	45.9%	43.9%	53.3%
21 Gilchrist	76.8%	81.2%	85.4%	78.7%	86.0%
22 Glades	59.4%	54.8%	67.1%	63.4%	62.3%
23 Gulf	87.8%	93.8%	91.4%	83.8%	85.1%
24 Hamilton	61.5%	60.7%	65.7%	63.2%	68.1%
25 Hardee	62.0%	72.2%	66.3%	70.3%	72.7%
26 Hendry	63.9%	69.6%	69.3%	72.1%	68.3%
27 Hernando	77.3%	79.5%	74.5%	74.1%	75.1%
28 Highlands	66.9%	71.9%	72.8%	69.6%	73.0%
29 Hillsborough	75.8%	79.3%	79.5%	77.3%	79.1%
30 Holmes	85.4%	79.6%	80.6%	71.3%	76.2%
31 Indian River	76.1%	82.1%	85.3%	84.7%	82.9%
32 Jackson	76.5%	77.1%	78.6%	87.8%	81.7%
33 Jefferson	71.8%	64.9%	68.1%	53.5%	64.2%
34 Lafayette	79.5%	80.0%	79.4%	81.7%	79.4%
35 Lake	73.0%	72.1%	72.2%	70.1%	73.5%
36 Lee	68.3%	70.7%	69.4%	71.5%	71.8%
37 Leon	75.8%	79.8%	79.8%	76.2%	79.0%
38 Levy	63.5%	67.4%	64.8%	65.6%	66.4%
39 Liberty	90.7%	89.8%	90.4%	89.7%	90.7%
40 Madison	68.0%	68.7%	63.0%	58.5%	66.9%
41 Manatee	73.8%	75.3%	81.5%	76.9%	78.7%
42 Marion	70.6%	73.1%	72.3%	71.8%	74.9%
43 Martin	85.1%	86.8%	84.9%	93.2%	91.2%
44 Monroe	73.9%	75.2%	76.7%	75.5%	83.6%
45 Nassau	79.5%	81.1%	85.2%	81.8%	80.7%
46 Okaloosa	83.7%	82.9%	85.2%	86.0%	84.7%
47 Okeechobee	67.3%	60.5%	62.5%	62.8%	64.0%
48 Orange	68.5%	72.7%	73.8%	72.2%	71.7%
49 Osceola	66.7%	64.6%	67.7%	64.5%	66.6%
50 Palm Beach	66.0%	65.9%	69.0%	69.3%	71.8%
51 Pasco	74.9%	75.9%	76.5%	74.4%	73.7%
52 Pinellas	69.0%	70.8%	70.1%	67.0%	67.3%
53 Polk	65.7%	71.6%	70.5%	68.8%	70.6%
54 Putnam	79.5%	80.2%	78.1%	76.4%	78.6%
55 St. Johns	78.2%	78.3%	76.8%	76.7%	78.3%
56 St. Lucie	76.8%	79.5%	73.6%	72.7%	75.4%
57 Santa Rosa	83.3%	84.8%	84.5%	85.5%	86.8%
58 Sarasota	76.4%	77.8%	81.7%	79.9%	83.5%
59 Seminole	81.4%	84.0%	81.3%	83.4%	86.7%
60 Sumter	79.8%	81.2%	75.7%	76.3%	81.1%
61 Suwannee	72.3%	69.1%	62.0%	65.1%	74.4%
62 Taylor	71.2%	74.1%	78.7%	78.3%	77.4%
63 Union	67.1%	79.2%	84.1%	76.7%	81.7%
64 Volusia	80.1%	83.0%	83.0%	81.9%	82.6%
65 Wakulla	83.6%	84.7%	85.5%	77.6%	82.5%
66 Walton	71.3%	75.2%	77.8%	76.1%	74.2%
67 Washington	66.8%	70.8%	68.5%	69.8%	71.5%
State	69.0%	71.6%	71.9%	71.0%	72.4%

*Source: 2006-07 Florida Department of Education (FL DOE) cohort graduation data as of 01/14/08.

Table 3a: Graduation Rates by Race, 2005-06 and 2006-07*

District	White, Non-Hispanic			Black, Non-Hispanic			Hispanic		
	2005-06	2006-07	Percent Change 2005-06 to 2006-07	2005-06	2006-07	Percent Change 2005-06 to 2006-07	2005-06	2006-07	Percent Change 2005-06 to 2006-07
01 Alachua	81.9%	77.3%	-4.6%	48.4%	53.7%	5.3%	74.8%	69.1%	-5.7%
02 Baker	75.1%	81.5%	6.5%	55.8%	57.8%	2.0%	#	#	
03 Bay	79.4%	81.7%	2.3%	62.8%	63.3%	0.4%	82.4%	67.3%	-15.0%
04 Bradford	73.1%	75.8%	2.6%	57.8%	56.9%	-0.9%	#	#	
05 Brevard	92.5%	94.3%	1.9%	80.7%	80.5%	-0.2%	86.2%	88.7%	2.4%
06 Broward	77.2%	76.5%	-0.7%	56.7%	55.3%	-1.4%	69.2%	67.4%	-1.8%
07 Calhoun	93.1%	84.6%	-8.5%	66.7%	61.5%	-5.1%	#	#	
08 Charlotte	80.0%	82.0%	2.0%	64.2%	74.2%	10.0%	68.1%	85.4%	17.3%
09 Citrus	73.4%	78.4%	5.0%	52.6%	51.5%	-1.1%	83.3%	77.2%	-6.1%
10 Clay	76.7%	78.0%	1.3%	62.7%	65.4%	2.8%	62.8%	65.7%	2.9%
11 Collier	84.5%	85.1%	0.5%	66.1%	65.2%	-0.9%	60.7%	57.6%	-3.1%
12 Columbia	72.5%	79.5%	7.0%	51.8%	57.5%	5.7%	70.0%	69.7%	-0.3%
13 Dade	71.5%	75.7%	4.2%	49.3%	54.4%	5.1%	61.2%	65.7%	4.6%
14 DeSoto	75.8%	76.3%	0.5%	78.6%	76.8%	-1.8%	50.6%	53.3%	2.7%
15 Dixie	73.5%	78.0%	4.5%	53.8%	46.2%	-7.7%	#	#	
16 Duval	66.7%	72.0%	5.3%	53.9%	55.7%	1.8%	51.0%	59.9%	8.9%
17 Escambia	84.2%	83.3%	-0.9%	58.1%	61.1%	3.0%	85.5%	75.4%	-10.1%
18 Flagler	81.7%	81.7%	0.0%	67.9%	62.0%	-5.9%	65.6%	68.3%	2.8%
19 Franklin	59.0%	57.6%	-1.4%	70.8%	47.6%	-23.2%	#	#	
20 Gadsden	41.7%	27.6%	-14.1%	47.0%	58.5%	11.5%	20.5%	25.8%	5.3%
21 Gilchrist	78.2%	86.2%	8.1%	#	#		#	#	
22 Glades	76.9%	69.4%	-7.5%	48.0%	50.0%	2.0%	60.0%	65.0%	5.0%
23 Gulf	87.5%	85.0%	-2.5%	67.9%	87.9%	20.0%	#	#	
24 Hamilton	73.8%	78.7%	5.0%	51.0%	61.1%	10.1%	53.8%	#	-53.8%
25 Hardee	73.8%	81.1%	7.3%	71.8%	75.0%	3.2%	67.8%	63.0%	-4.8%
26 Hendry	80.3%	76.8%	-3.5%	73.6%	67.3%	-6.2%	64.3%	60.8%	-3.5%
27 Hernando	75.5%	76.4%	0.9%	61.4%	60.9%	-0.5%	74.5%	73.6%	-0.9%
28 Highlands	76.3%	77.5%	1.2%	55.1%	69.8%	14.7%	65.1%	61.5%	-3.5%
29 Hillsborough	84.9%	85.9%	1.0%	65.2%	67.6%	2.4%	71.1%	73.8%	2.6%
30 Holmes	71.6%	76.4%	4.8%	#	76.9%		#	#	
31 Indian River	89.5%	88.1%	-1.4%	71.5%	64.3%	-7.2%	66.1%	72.9%	6.8%
32 Jackson	90.0%	88.5%	-1.5%	83.1%	67.8%	-15.3%	#	#	
33 Jefferson	55.3%	65.4%	10.1%	53.1%	65.1%	12.0%	#	#	
34 Lafayette	82.4%	78.8%	-3.5%	80.0%	#		#	#	
35 Lake	75.5%	78.2%	2.7%	54.9%	61.8%	6.9%	56.6%	61.9%	5.3%
36 Lee	79.3%	78.9%	-0.5%	53.2%	57.3%	4.1%	58.9%	60.9%	2.0%
37 Leon	86.7%	86.9%	0.2%	60.0%	64.3%	4.4%	71.3%	74.1%	2.8%
38 Levy	69.9%	70.9%	1.0%	48.7%	54.4%	5.7%	50.0%	42.1%	-7.9%
39 Liberty	90.1%	92.1%	2.0%	90.2%	88.6%	-1.7%	#	#	
40 Madison	73.8%	74.0%	0.3%	47.6%	58.5%	10.9%	#	#	
41 Manatee	84.4%	85.3%	0.9%	58.7%	63.3%	4.5%	57.6%	62.0%	4.4%
42 Marion	75.9%	79.9%	4.0%	61.8%	62.0%	0.3%	63.5%	65.5%	2.0%
43 Martin	96.2%	94.8%	-1.4%	77.8%	77.8%	0.0%	81.7%	71.5%	-10.2%
44 Monroe	80.3%	88.8%	8.6%	59.3%	78.2%	18.9%	64.1%	70.3%	6.3%
45 Nassau	82.1%	82.7%	0.6%	81.3%	65.3%	-15.9%	85.7%	70.6%	-15.1%
46 Okaloosa	87.9%	86.7%	-1.2%	74.1%	76.4%	2.3%	77.7%	71.2%	-6.5%
47 Okeechobee	65.3%	70.7%	5.3%	54.9%	59.2%	4.3%	58.2%	47.7%	-10.5%
48 Orange	83.1%	82.3%	-0.8%	60.4%	60.3%	-0.1%	64.4%	65.7%	1.3%
49 Osceola	72.7%	76.4%	3.8%	60.8%	61.8%	1.1%	57.4%	59.6%	2.1%
50 Palm Beach	81.8%	84.0%	2.2%	53.6%	55.6%	2.0%	61.2%	64.8%	3.6%
51 Pasco	75.3%	75.5%	0.2%	69.1%	61.5%	-7.5%	65.8%	65.5%	-0.3%
52 Pinellas	72.6%	74.2%	1.6%	46.6%	44.7%	-1.9%	60.0%	57.0%	-3.0%
53 Polk	74.8%	77.2%	2.4%	59.0%	60.7%	1.7%	55.6%	59.2%	3.6%
54 Putnam	82.7%	82.6%	-0.1%	63.9%	71.1%	7.2%	59.4%	71.2%	11.9%
55 St. Johns	79.4%	80.1%	0.6%	51.6%	59.8%	8.2%	81.3%	74.7%	-6.6%
56 St. Lucie	81.2%	83.3%	2.0%	62.0%	66.7%	4.7%	63.6%	67.4%	3.8%
57 Santa Rosa	86.0%	87.1%	1.2%	76.2%	81.0%	4.8%	86.7%	91.3%	4.6%
58 Sarasota	84.0%	87.5%	3.6%	55.9%	63.2%	7.2%	63.4%	67.6%	4.2%
59 Seminole	88.0%	91.4%	3.4%	68.2%	69.7%	1.5%	76.4%	78.9%	2.5%
60 Sumter	80.2%	85.8%	5.6%	64.1%	64.0%	-0.1%	64.7%	80.6%	15.8%
61 Suwannee	67.9%	77.0%	9.1%	58.0%	69.6%	11.6%	50.0%	55.0%	5.0%
62 Taylor	80.0%	79.4%	-0.6%	73.6%	72.6%	-1.0%	#	#	
63 Union	85.2%	87.8%	2.7%	44.8%	47.8%	3.0%	#	#	
64 Volusia	86.3%	87.8%	1.4%	65.5%	64.6%	-0.9%	73.8%	72.7%	-1.1%
65 Wakulla	77.9%	83.0%	5.1%	76.5%	76.2%	-0.3%	#	#	
66 Walton	78.4%	76.1%	-2.2%	50.0%	58.8%	8.8%	#	50.0%	
67 Washington	70.2%	75.4%	5.2%	64.4%	60.0%	-4.4%	#	#	
Subtotal (1-67)	79.9%	81.0%	1.2%	56.8%	58.6%	1.8%	63.7%	66.0%	2.3%
68 Deaf/Blind	92.2%	87.5%	-4.7%	88.2%	89.5%	1.2%	76.5%	93.8%	17.3%
69 Dozier/Okeec	61.3%	61.2%	-0.1%	50.9%	48.8%	-2.2%	#	#	
72 FAU Lab School	#	#		#	#		#	#	
73 FSU Lab School	94.1%	98.7%	4.5%	94.7%	95.1%	0.4%	#	100.0%	
74 FAMU Lab School	#	#		89.5%	77.4%	-12.1%	#	#	
75 UF Lab School	98.5%	93.5%	-5.0%	94.7%	96.4%	1.7%	#	87.5%	
STATE	79.9%	81.0%	1.1%	56.9%	58.7%	1.8%	63.7%	66.0%	2.3%

A pound sign (#) replaces data when the cohort is fewer than 10 students.

*2006-07 FL DOE cohort graduation data as of 01/14/08

Table 3b: Graduation Rates by Race, 2005-06 and 2006-07*

District	Asian/Pacific Islander			American Indian/Alaskan Native			Multiracial		
	2005-06	2006-07	Percent Change 2005-06 to 2006-07	2005-06	2006-07	Percent Change 2005-06 to 2006-07	2005-06	2006-07	Percent Change 2005-06 to 2006-07
01 Alachua	75.0%	79.8%	4.8%	#	#		74.5%	71.4%	-3.0%
02 Baker		#					#	#	
03 Bay	85.1%	87.5%	2.4%	#	63.6%		82.9%	85.1%	2.2%
04 Bradford	#						#		
05 Brevard	94.9%	92.4%	-2.5%	100.0%	90.9%	-9.1%	92.7%	92.8%	0.1%
06 Broward	85.3%	83.7%	-1.6%	68.3%	74.2%	5.9%	67.1%	70.1%	3.1%
07 Calhoun	#	#					#	#	
08 Charlotte	88.9%	81.0%	-7.9%	#	#		59.3%	87.1%	27.8%
09 Citrus	95.0%	#		#	#		83.3%	44.4%	-38.9%
10 Clay	76.8%	79.1%	2.2%	#	#		76.0%	74.5%	-1.5%
11 Collier	88.0%	84.6%	-3.4%	#	90.0%		76.5%	75.0%	-1.5%
12 Columbia	75.0%	#		#	#		#	80.0%	
13 Dade	82.6%	83.0%	0.5%	79.3%	73.7%	-5.6%	74.2%	75.7%	1.5%
14 DeSoto		#							
15 Dixie							#		
16 Duval	70.6%	74.5%	3.9%	47.4%	57.1%	9.8%	62.3%	68.8%	6.5%
17 Escambia	81.8%	84.4%	2.6%	80.0%	72.2%	-7.8%	91.2%	87.5%	-3.7%
18 Flagler	78.9%	80.0%	1.1%	#	#		#	66.7%	
19 Franklin	#						#	#	
20 Gadsden		#							
21 Gilchrist	#	#						#	
22 Glades	#	#		#			#		
23 Gulf								#	
24 Hamilton	#								
25 Hardee	#	#		#					
26 Hendry	#	#		#	#		#	#	
27 Hernando	64.7%	95.2%	30.5%	#	#		65.0%	66.7%	1.7%
28 Highlands	#	84.6%		#	#		#	60.0%	
29 Hillsborough	90.1%	90.8%	0.8%	77.6%	84.6%	7.0%	82.8%	79.5%	-3.4%
30 Holmes	#	#		#				#	
31 Indian River	100.0%	91.3%	-8.7%	#	#		80.0%	84.6%	4.6%
32 Jackson	#	#			#		#	#	
33 Jefferson	#	#						#	
34 Lafayette	#								
35 Lake	83.7%	82.0%	-1.7%	100.0%	#		68.4%	84.0%	15.6%
36 Lee	78.9%	84.1%	5.1%	100.0%	60.0%	-40.0%	81.1%	76.7%	-4.4%
37 Leon	75.8%	83.6%	7.9%	#	#		72.7%	83.9%	11.1%
38 Levy	#	#					#	#	
39 Liberty									
40 Madison	#	#					#	#	
41 Manatee	82.5%	84.0%	1.5%	#	#		75.0%	73.3%	-1.7%
42 Marion	91.9%	85.1%	-6.8%	75.0%	90.0%	15.0%	76.9%	73.0%	-3.9%
43 Martin	94.4%	100.0%	5.6%	#	#		#	95.0%	
44 Monroe	90.0%	#		#	#		75.0%	70.0%	-5.0%
45 Nassau	#	60.0%		#	#		#	#	
46 Okaloosa	85.5%	85.5%	0.0%	76.9%	#		89.9%	82.8%	-7.1%
47 Okeechobee	#	#		#	66.7%		#	#	
48 Orange	88.7%	83.8%	-4.9%	84.9%	76.5%	-8.4%	73.9%	75.6%	1.7%
49 Osceola	76.9%	76.2%	-0.7%	63.6%	#		67.6%	62.9%	-4.7%
50 Palm Beach	82.9%	84.5%	1.6%	67.9%	62.2%	-5.7%	73.4%	80.9%	7.5%
51 Pasco	89.5%	84.1%	-5.3%	58.3%	53.3%	-5.0%	81.9%	67.5%	-14.4%
52 Pinellas	73.7%	72.9%	-0.8%	66.7%	58.3%	-8.3%	56.4%	60.4%	4.0%
53 Polk	76.2%	80.7%	4.5%	75.0%	100.0%	25.0%	66.7%	65.1%	-1.6%
54 Putnam	#	#		#	#		#	#	
55 St. Johns	72.5%	86.0%	13.5%	#	#		85.0%	90.0%	5.0%
56 St. Lucie	82.9%	87.0%	4.2%	#	#		71.8%	80.0%	8.2%
57 Santa Rosa	90.9%	88.2%	-2.7%	88.2%	88.2%	0.0%	78.3%	76.0%	-2.3%
58 Sarasota	88.6%	87.1%	-1.5%	#	#		84.5%	75.8%	-8.7%
59 Seminole	90.4%	92.3%	1.9%	71.4%	91.7%	20.2%	80.2%	82.9%	2.7%
60 Sumter	#	#		#	#		#	#	
61 Suwannee	#	#		#	#		#	#	
62 Taylor	#	#		#	#				
63 Union		#						#	
64 Volusia	81.4%	89.4%	8.0%	77.3%	#		87.2%	73.1%	-14.2%
65 Wakulla	#	#			#		#		
66 Walton	#	#		#	#		#		
67 Washington	#	#		#	#		#	#	
Subtotal (1-67)	83.2%	83.1%	0.0%	75.7%	74.5%	-1.1%	75.8%	75.3%	-0.5%
68 Deaf/Blind		#			#		#		
69 Dozier/Okeec									
72 FAU Lab School									
73 FSU Lab School	#	#		#	#		#	#	
74 FAMU Lab School								#	
75 UF Lab School		#			#		#	#	
STATE	83.2%	83.2%	0.0%	75.7%	74.7%	-1.0%	75.9%	75.4%	-0.5%

A pound sign (#) replaces data when the cohort is fewer than 10 students.

*2006-07 FL DOE cohort graduation data as of 01/14/08

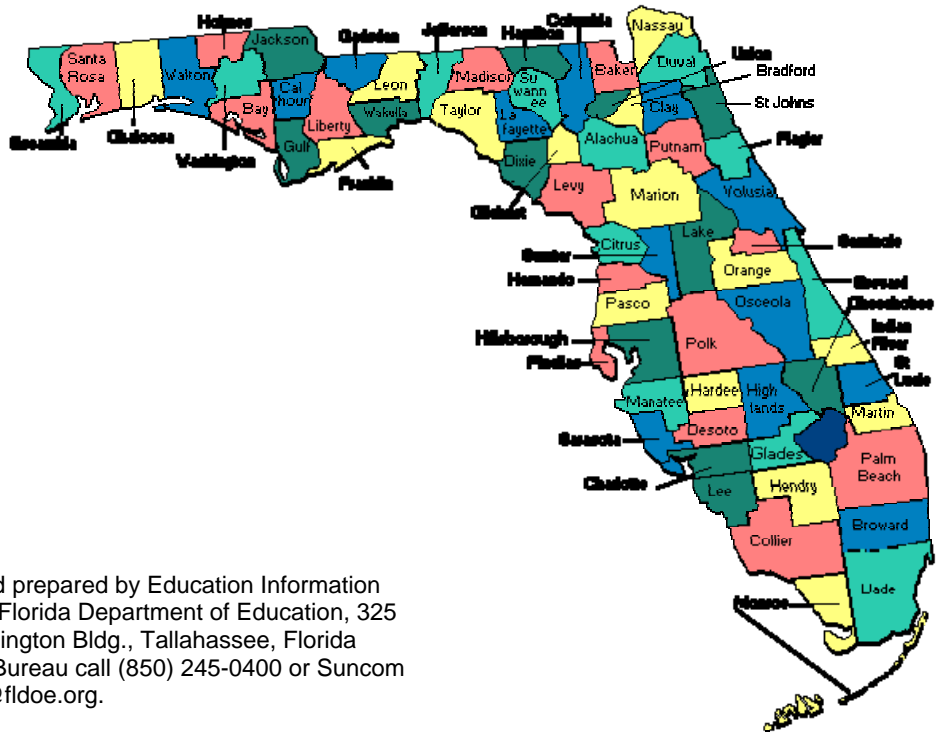
Table 4: Percent Change in Graduation Rates, 2005-06 to 2006-07*

District	2005-06	2006-07	Percent Change
01 Alachua	69.8%	68.2%	-1.6%
02 Baker	73.1%	77.9%	4.8%
03 Bay	77.5%	78.7%	1.2%
04 Bradford	69.5%	70.7%	1.2%
05 Brevard	90.7%	92.1%	1.3%
06 Broward	67.8%	66.3%	-1.5%
07 Calhoun	89.6%	82.5%	-7.1%
08 Charlotte	78.0%	81.6%	3.6%
09 Citrus	73.2%	76.1%	2.9%
10 Clay	73.8%	75.3%	1.5%
11 Collier	74.7%	73.6%	-1.1%
12 Columbia	67.4%	74.1%	6.7%
13 Dade	59.2%	63.9%	4.6%
14 DeSoto	70.0%	70.5%	0.5%
15 Dixie	70.4%	75.3%	4.9%
16 Duval	60.5%	64.3%	3.8%
17 Escambia	74.8%	75.2%	0.4%
18 Flagler	78.4%	77.1%	-1.3%
19 Franklin	60.7%	56.5%	-4.2%
20 Gadsden	43.9%	53.3%	9.3%
21 Gilchrist	78.7%	86.0%	7.3%
22 Glades	63.4%	62.3%	-1.1%
23 Gulf	83.8%	85.1%	1.4%
24 Hamilton	63.2%	68.1%	4.9%
25 Hardee	70.3%	72.7%	2.4%
26 Hendry	72.1%	68.3%	-3.8%
27 Hernando	74.1%	75.1%	1.0%
28 Highlands	69.6%	73.0%	3.3%
29 Hillsborough	77.3%	79.1%	1.7%
30 Holmes	71.3%	76.2%	4.9%
31 Indian River	84.7%	82.9%	-1.8%
32 Jackson	87.8%	81.7%	-6.1%
33 Jefferson	53.5%	64.2%	10.7%
34 Lafayette	81.7%	79.4%	-2.3%
35 Lake	70.1%	73.5%	3.4%
36 Lee	71.5%	71.8%	0.2%
37 Leon	76.2%	79.0%	2.9%
38 Levy	65.6%	66.4%	0.8%
39 Liberty	89.7%	90.7%	1.0%
40 Madison	58.5%	66.9%	8.4%
41 Manatee	76.9%	78.7%	1.8%
42 Marion	71.8%	74.9%	3.0%
43 Martin	93.2%	91.2%	-2.0%
44 Monroe	75.5%	83.6%	8.0%
45 Nassau	81.8%	80.7%	-1.1%
46 Okaloosa	86.0%	84.7%	-1.2%
47 Okeechobee	62.8%	64.0%	1.2%
48 Orange	72.2%	71.7%	-0.4%
49 Osceola	64.5%	66.6%	2.1%
50 Palm Beach	69.3%	71.8%	2.5%
51 Pasco	74.4%	73.7%	-0.7%
52 Pinellas	67.0%	67.3%	0.3%
53 Polk	68.8%	70.6%	1.8%
54 Putnam	76.4%	78.6%	2.2%
55 St. Johns	76.7%	78.3%	1.5%
56 St. Lucie	72.7%	75.4%	2.6%
57 Santa Rosa	85.5%	86.8%	1.3%
58 Sarasota	79.9%	83.5%	3.5%
59 Seminole	83.4%	86.7%	3.3%
60 Sumter	76.3%	81.1%	4.8%
61 Suwannee	65.1%	74.4%	9.3%
62 Taylor	78.3%	77.4%	-0.9%
63 Union	76.7%	81.7%	5.0%
64 Volusia	81.9%	82.6%	0.7%
65 Wakulla	77.6%	82.5%	4.9%
66 Walton	76.1%	74.2%	-1.9%
67 Washington	69.8%	71.5%	1.7%
STATE	71.0%	72.4%	1.4%

*2006-07 FL DOE cohort graduation data as of 01/14/08

(intentionally blank)

FLORIDA SCHOOL DISTRICTS



This report was designed and prepared by Education Information and Accountability Services, Florida Department of Education, 325 West Gaines Street, 852 Turlington Bldg., Tallahassee, Florida 32399-0400. To contact the Bureau call (850) 245-0400 or Suncom 205-0400 or e-mail askeias@fldoe.org.

Florida Department of Education
Education Information & Accountability Services
325 W. Gaines Street, 852 Turlington Building
Tallahassee FL 32399-0400

ADDRESS CORRECTION REQUESTED