



Florida Information Note

Education Information & Accountability Services

Dropout Demographics in Florida's Public Schools and Dropout Rates

December 2007

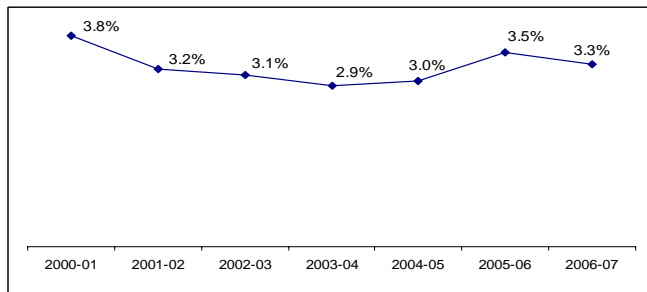
Series 2008-11F

Introduction:

In Florida, a dropout is defined as a student who withdraws from school for any of several reasons cited in statute without transferring to another school, home education program, or adult education program. Dropout withdrawal reasons include voluntary withdrawal from school prior to graduation (e.g., after passing the age of compulsory school attendance); failure to meet attendance requirements due to excessive absenteeism; discontinuance of attendance with whereabouts unknown; failure to enter/attend school as expected after having previously registered; and certain other reasons. The dropout rate is calculated and reported for all children in grades 9-12 who drop out of school.

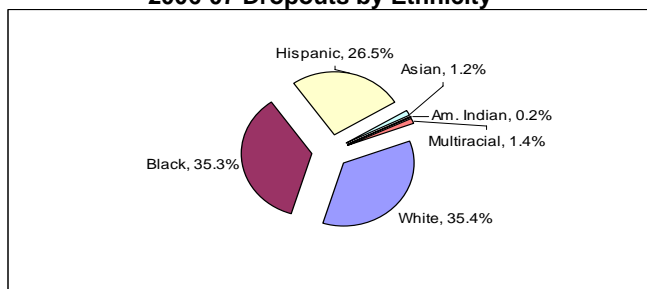
Dropout Profiles:

In 2006-07, there was a decrease in the dropout rate. Florida's dropout rate steadily decreased from 2000-01 to 2003-04, but has increased slightly in the last three years.



Of dropouts reported for grades 9-12 in 2006-07, 35.4 percent were white, 35.3 percent were black, 26.5 percent were Hispanic, 1.2 percent were Asian, 0.2 percent were American Indian, and 1.4 percent were multiracial.

2006-07 Dropouts by Ethnicity



While the majority of dropouts were white students, dropout rates were highest among black and Hispanic students, as shown in the chart below.

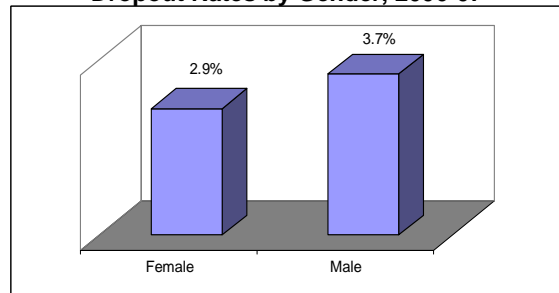
Dropout Rates by Ethnicity, 2000-01 and 2006-07

Ethnic Group	2000-01	2006-07	% Change from 2000-01
White	3.1%	2.4%	-0.7
Black	4.7%	4.7%	0.0
Hispanic	4.7%	3.9%	-0.8
Asian	2.1%	1.7%	-0.4
Am. Indian	3.1%	2.6%	-0.5
Multiracial	3.0%	2.3%	-0.7
Total	3.8%	3.3%	-0.5

For each racial/ethnic group except black students, dropout rates were lower in 2006-07 than in 2000-01. Dropout rates for black students were the same for both years. The Hispanic student population showed the greatest reduction in dropout rate, which decreased from 4.7% in 2000-01 to 3.9% in 2006-07.

Dropout rates also vary by gender group, with males having a higher percentage of dropouts than females.

Dropout Rates by Gender, 2006-07



Districts Above and Below State Average

In 2006-07, 36 of Florida's 67 school districts had a dropout rate lower than the state's rate. Glades County had the highest dropout rate of 13.0%, and Liberty County had the lowest dropout rate at 0.4%.

The table on the following page displays district-level dropout rates by race and gender for 2006-07.

2006-07 Dropout Rates

District	White	Black	Hispanic	Asian	Am. Indian	Multiracial	Female	Male	All
01 ALACHUA	5.0%	9.0%	5.4%	2.4%	5.0%	4.7%	6.1%	6.9%	6.6%
02 BAKER	2.9%	2.2%	0.0%	#	#	0.0%	2.0%	3.4%	2.8%
03 BAY	2.4%	3.3%	2.9%	0.0%	0.0%	0.5%	2.0%	3.0%	2.5%
04 BRADFORD	5.4%	4.7%	5.0%	0.0%	#	#	5.0%	5.3%	5.1%
05 BREVARD	0.7%	1.6%	0.8%	0.8%	0.0%	0.6%	0.6%	1.1%	0.9%
06 BROWARD	2.1%	4.7%	2.5%	1.9%	2.9%	2.5%	2.9%	3.5%	3.2%
07 CALHOUN	3.6%	1.3%	0.0%	#	#	#	3.2%	3.2%	3.2%
08 CHARLOTTE	1.5%	2.0%	2.2%	0.9%	0.0%	1.2%	1.6%	1.6%	1.6%
09 CITRUS	4.0%	6.0%	3.8%	0.0%	11.5%	2.0%	3.0%	5.0%	4.1%
10 CLAY	2.4%	2.5%	1.0%	1.6%	0.0%	1.6%	2.0%	2.5%	2.3%
11 COLLIER	1.7%	2.9%	3.9%	0.0%	6.3%	2.2%	2.4%	2.9%	2.7%
12 COLUMBIA	2.3%	2.3%	1.6%	0.0%	0.0%	5.6%	2.1%	2.5%	2.3%
13 DADE	4.2%	7.4%	5.3%	3.6%	3.9%	3.1%	5.1%	6.5%	5.8%
14 DESOTO	4.0%	2.2%	6.7%	0.0%	#	#	3.9%	4.5%	4.2%
15 DIXIE	3.8%	7.2%	#	#	#	#	3.9%	4.9%	4.4%
16 DUVAL	4.9%	5.4%	6.3%	3.5%	6.8%	4.4%	4.6%	5.8%	5.2%
17 ESCAMBIA	2.4%	4.9%	3.5%	1.3%	0.8%	1.4%	2.9%	3.6%	3.3%
18 FLAGLER	1.8%	4.6%	4.2%	0.0%	0.0%	3.4%	1.8%	3.1%	2.5%
19 FRANKLIN	7.1%	5.7%	#	*	*	#	5.8%	7.4%	6.7%
20 GADSDEN	7.5%	5.1%	7.0%	#	#	#	5.4%	5.4%	5.4%
21 GILCHRIST	1.5%	0.0%	0.0%	#	#	#	0.2%	2.6%	1.4%
22 GLADES	11.4%	18.9%	9.6%	#	#	#	6.4%	19.4%	13.0%
23 GULF	1.1%	0.0%	0.0%	#	#	#	0.5%	1.2%	0.9%
24 HAMILTON	3.4%	6.1%	5.4%	#	*	#	2.9%	6.7%	5.1%
25 HARDEE	3.0%	5.3%	7.1%	13.0%	#	#	4.5%	5.7%	5.1%
26 HENDRY	2.8%	2.7%	3.4%	0.0%	10.0%	0.0%	2.5%	3.4%	3.0%
27 HERNANDO	3.4%	3.7%	2.7%	1.2%	0.0%	1.1%	2.4%	4.2%	3.3%
28 HIGHLANDS	5.3%	5.1%	6.3%	0.0%	8.3%	1.8%	4.3%	6.4%	5.4%
29 HILLSBOROUGH	1.3%	1.8%	2.2%	0.6%	1.7%	1.1%	1.5%	1.6%	1.6%
30 HOLMES	3.2%	5.1%	0.0%	7.7%	#	#	2.6%	4.2%	3.4%
31 INDIAN RIVER	1.2%	4.1%	2.2%	0.0%	0.0%	0.0%	1.9%	1.7%	1.8%
32 JACKSON	1.7%	1.6%	0.0%	0.0%	0.0%	0.0%	1.7%	1.6%	1.6%
33 JEFFERSON	9.8%	6.7%	16.7%	#	*	#	6.6%	9.8%	7.9%
34 LAFAYETTE	2.1%	0.0%	6.5%	#	*	#	2.2%	2.3%	2.3%
35 LAKE	4.4%	5.0%	4.3%	3.5%	0.0%	4.2%	3.9%	5.1%	4.5%
36 LEE	1.9%	3.3%	3.0%	1.6%	2.0%	1.2%	2.1%	2.7%	2.4%
37 LEON	1.9%	6.3%	2.3%	0.4%	0.0%	4.3%	3.0%	4.3%	3.6%
38 LEVY	3.9%	5.0%	4.5%	6.7%	#	21.4%	3.0%	5.3%	4.2%
39 LIBERTY	0.5%	0.0%	0.0%	*	#	#	0.6%	0.3%	0.4%
40 MADISON	4.8%	5.7%	16.0%	#	*	#	5.3%	5.6%	5.5%
41 MANATEE	0.9%	2.3%	1.6%	1.5%	0.0%	0.7%	1.3%	1.3%	1.3%
42 MARION	2.8%	5.1%	3.1%	0.5%	1.4%	5.1%	2.8%	3.8%	3.3%
43 MARTIN	0.4%	0.9%	1.7%	0.0%	0.0%	0.0%	0.4%	0.8%	0.6%
44 MONROE	0.9%	1.0%	2.6%	0.0%	#	0.0%	1.3%	1.2%	1.2%
45 NASSAU	4.3%	3.2%	4.5%	0.0%	#	5.3%	4.2%	4.1%	4.2%
46 OKALOOSA	1.8%	1.8%	2.6%	1.8%	0.0%	1.7%	1.6%	2.0%	1.8%
47 OKEECHOBEE	4.6%	4.2%	7.3%	0.0%	5.8%	12.5%	4.5%	6.1%	5.3%
48 ORANGE	1.2%	2.6%	1.5%	0.7%	2.0%	1.3%	1.4%	2.0%	1.7%
49 OSCEOLA	4.0%	3.6%	4.6%	2.9%	6.0%	4.4%	3.3%	5.1%	4.2%
50 PALM BEACH	2.9%	6.8%	5.0%	1.7%	3.7%	2.4%	3.5%	5.3%	4.4%
51 PASCO	3.4%	3.2%	4.4%	1.6%	7.1%	1.7%	3.0%	3.8%	3.5%
52 PINELLAS	2.8%	5.0%	3.6%	2.8%	1.7%	3.7%	3.2%	3.6%	3.4%
53 POLK	4.1%	3.9%	5.1%	2.4%	3.0%	4.4%	4.2%	4.1%	4.2%
54 PUTNAM	2.9%	2.8%	3.7%	0.0%	#	4.3%	2.7%	3.2%	2.9%
55 ST. JOHNS	1.9%	2.0%	1.2%	0.6%	0.0%	1.5%	1.3%	2.2%	1.8%
56 ST. LUCIE	1.8%	2.0%	2.9%	0.4%	2.4%	1.6%	1.6%	2.4%	2.0%
58 SARASOTA	2.3%	4.9%	4.0%	0.4%	2.6%	1.8%	2.5%	2.9%	2.7%
59 SEMINOLE	1.2%	3.4%	1.3%	0.4%	0.0%	1.9%	1.0%	2.0%	1.5%
60 SUMTER	2.9%	2.6%	1.5%	0.0%	#	4.5%	2.3%	3.1%	2.7%
61 SUWANNEE	5.2%	6.5%	4.1%	0.0%	#	#	4.8%	5.6%	5.2%
62 TAYLOR	4.2%	6.8%	0.0%	#	0.0%	#	3.7%	5.5%	4.7%
63 UNION	1.5%	3.4%	0.0%	#	*	#	1.3%	2.1%	1.8%
64 VOLUSIA	1.0%	1.5%	2.5%	0.6%	1.7%	1.2%	1.0%	1.5%	1.3%
65 WAKULLA	2.8%	2.2%	0.0%	#	#	0.0%	1.9%	3.5%	2.7%
66 WALTON	2.3%	1.6%	4.7%	0.0%	0.0%	0.0%	1.5%	3.1%	2.3%
67 WASHINGTON	1.6%	0.5%	0.0%	#	13.3%	5.6%	1.6%	1.6%	1.6%
68 DEAF/BLIND	0.0%	0.0%	0.0%	#	#	#	0.0%	0.0%	0.0%
69 DOZIER	3.5%	3.0%	0.0%	#	#	#	*	2.9%	2.9%
72 FAU LAB SCH	0.0%	#	0.0%	#	*	#	0.0%	0.0%	0.0%
73 FSU LAB SCH	0.0%	0.0%	0.0%	0.0%	#	0.0%	0.0%	0.0%	0.0%
74 FAMU LAB SCH	*	0.0%	*	*	*	#	0.0%	0.0%	0.0%
75 UF LAB SCH	0.0%	0.0%	1.7%	#	#	0.0	0.0%	0.4%	0.2%
STATE	2.4%	4.7%	3.9%	1.7%	2.6%	2.3%	2.9%	3.7%	3.3%

* An asterisk indicates that no students were in membership.

A pound sign indicates that fewer than 10 students were in membership. Results were suppressed to protect students' confidentiality.

As a service to Florida school districts, each *Florida Information Note* (FIN) presents information on education topics of current interest. Each FIN is prepared by Education Information and Accountability Services, 852 Turlington Bldg., 325 W. Gaines Street, Tallahassee, Florida 32399-0400. For further information, call (850) 245-0400 or SunCom 205-0400, or visit our web address at <http://www.fldoe.org/eias/>.