

JRS CUSTOM FABRICATION

186 NW 68th Avenue

Ocala, FL

(352) 351-2100

GENERATOR ENCLOSURE LARGE MISSILE IMPACT TEST

NOTES:

1. THE COMPONENTS INDICATED IN THESE DRAWINGS HAVE BEEN RESISTANCE TESTED FOR IMPACT PER MODIFIED STANDARDS SUPPLIED BY THE DEPARTMENT OF EMERGENCY MANAGEMENT AND THE DEPARTMENT OF EDUCATION. SEE IMPACT TEST REPORT CONDUCTED MAY 2007.

2. THESE DRAWINGS INDICATE ONE SIZE GENERATOR ENCLOSURE. OTHER SIZES COMPOSED OF THE SAME TESTED COMPONENTS ARE ACCEPTABLE.

3. THE WINDLOAD CAPACITY AND RESISTANCE OF THE GENERATOR ENCLOSURE WAS NOT TESTED AND IS NOT DISCUSSED IN THIS SUBMITTAL.

INDEX OF DRAWINGS

COVER SHEET
ASSEMBLY VIEW
SA ENCL LVL II
ROOF ASSEMBLY
ENC. FRAME
ENC. SKIN
48x72 BLANK DOOR

JULY, 2007

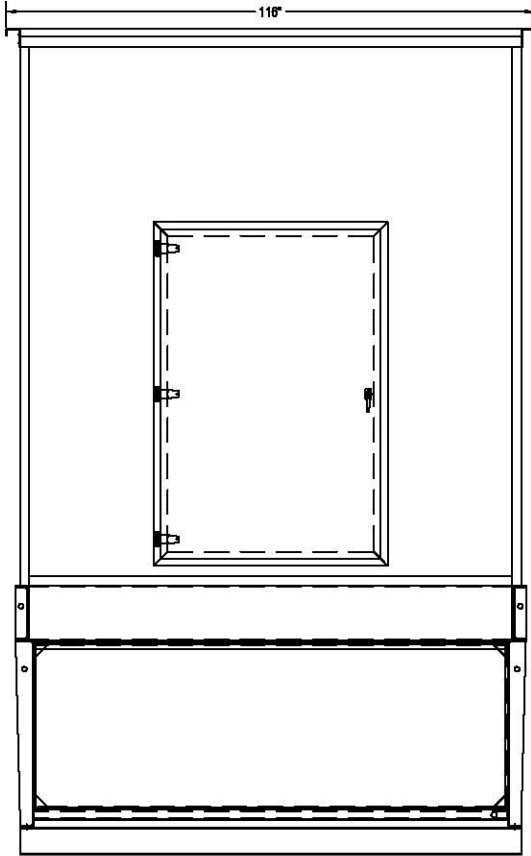
Douglas R. Barkley, M.S., P.E.
F.P.E. # 49090


CONSULTING ENGINEERS, INC.
Structural & Civil Engineers
2804 REMINGTON GREEN CIRCLE, SUITE 1
TALLAHASSEE, FLORIDA 32308
OFFICE 850-297-0440
FAX 850-297-0697

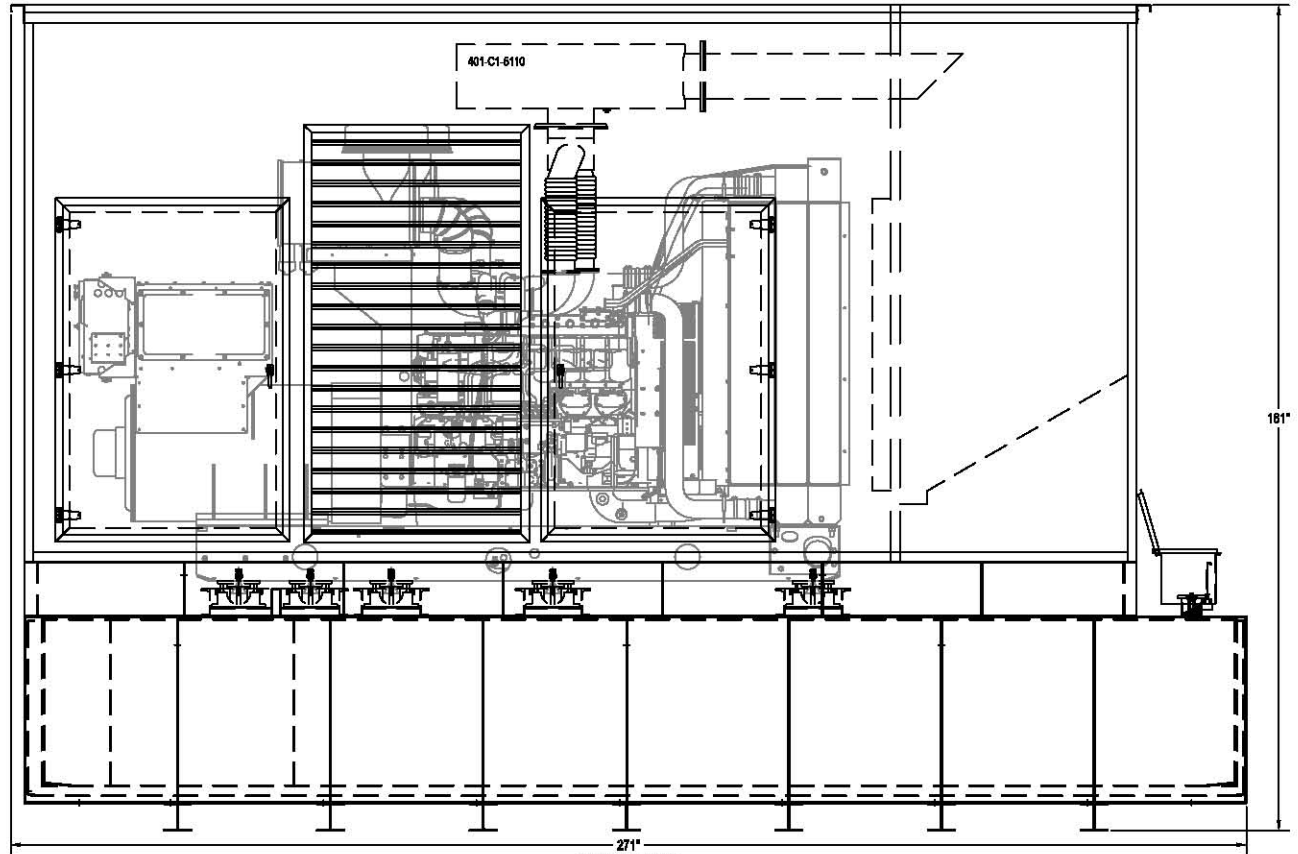
DBA REDUCTION
25DBA RED @ 7M

TYPE

ASSEMBLY VIEW



REAR VIEW



RIGHT SIDE VIEW

SPECIAL INSTRUCTIONS

1	MOUNT UNIT & COMPLETE PACKAGE
2	PROVIDE & INSTALL EXHAUST MOUNTING KIT
3	2" TUBE CONSTRUCTION
4	PROVIDE AND INSTALL BATTERY RACK
5	INSTALL CUSTOMER SUPPLIED BATTERY CHARGER
6	5 YEAR ENCLOSURE WARRANTY
7	MISSILE IMPACT RESISTANT ENCLOSURE (CERTIFIED BY DOE / DMS TESTING)
8	150 MPH WIND LOAD RATED (CERTIFIED BY JRS / EBS)
9	MISSILE IMPACT RESISTANT INTAKE LOUVERS
10	ENCLOSURE SKIN IS MATERIAL IS 0.08 THICKNESS

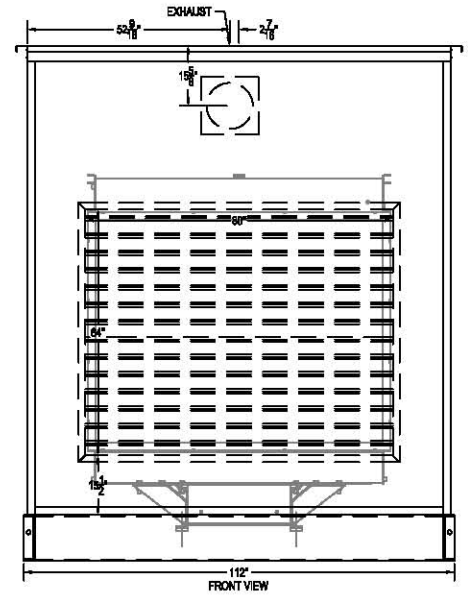
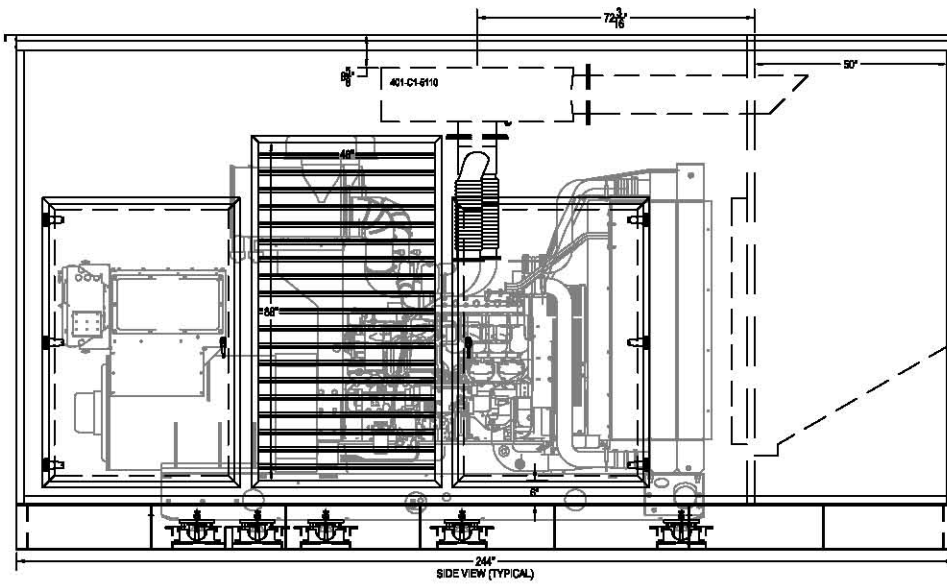
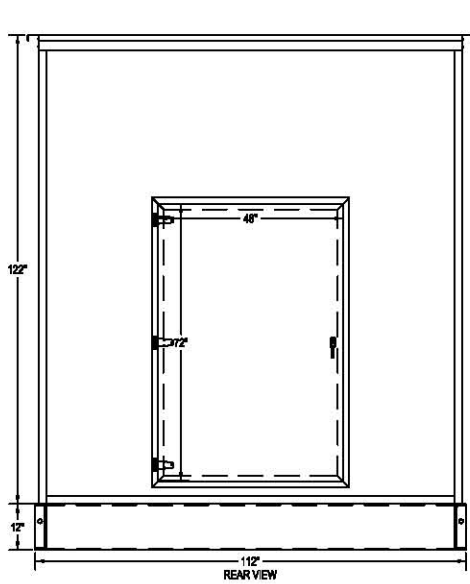
JRS Custom Fab.
OCALA, FLORIDA
PHONE(352) 351-2100 FAX(352) 351-5881

REV

DRAWN BY:	M.M.	DATE	07/11/07	SCALE	N.T.S.	SPEC	ALUMINUM
-----------	------	------	----------	-------	--------	------	----------

DBA REDUCTION
25DBA RED @ 7M

TYPE SA ENCL LVL II



APPROVAL CHECKLIST				
REVIEWED BY			DATE	
	APPROVED AS NOTED	CONTROL PANEL LOCATION	CIRCUIT BREAKER LOCATION	
NO EXCEPTIONS TAKEN / RELEASE FOR PRODUCTION		RIGHT SIDE		RIGHT SIDE
		LEFT SIDE		LEFT SIDE
NOT APPROVED / REVISE AND SUBMIT		REAR		REAR
APPROVAL CHECKLIST MUST BE SIGNED PRIOR TO PRODUCTION				

EXHAUST LIST		
QTY.	PART	PART NUMBER
1	10" SILENCER	401-C1-5110
2	NUT, BOLT, GASKET KIT	47-GF-1000
2	NUT, BOLT, GASKET KIT FOR 6" CUMMINS FLANGE	47-CUM-600-GF
1	STRAIGHT TUBE 45° CUT FLANGED OE	25-1000, B-57"
1	6" CUMMINS X 6" CUMMINS X 10" ANSI WYE FLEX 32" OAL	13-33735

SPECIAL INSTRUCTIONS	
1	MOUNT UNIT & COMPLETE PACKAGE
2	PROVIDE & INSTALL EXHAUST MOUNTING KIT
3	2" TUBE CONSTRUCTION
4	PROVIDE AND INSTALL BATTERY RACK
5	INSTALL CUSTOMER SUPPLIED BATTERY CHARGER
6	5 YEAR ENCLOSURE WARRANTY
7	MISSILE IMPACT RESISTANT ENCLOSURE (CERTIFIED BY DOE / DMS TESTING)
8	150 MPH WIND LOAD RATED (CERTIFIED BY JRS / EBS)
9	MISSILE IMPACT RESISTANT INTAKE LOUVERS
10	ENCLOSURE SKIN IS MATERIAL IS 0.08 THICKNESS

JRS Custom Fab.
 Ocala, Florida
 PHONE(352) 351-2100 FAX(352) 351-5881

DRAWN BY: M.M.	DATE: 07/11/07	SCALE: N.T.S.	SPEC: ALUMINUM	UNIT:	REV:
----------------	----------------	---------------	----------------	-------	------

Figure 1 - Roof Assembly, .090 Aluminum, 115 1/2" x 195", 9 panels

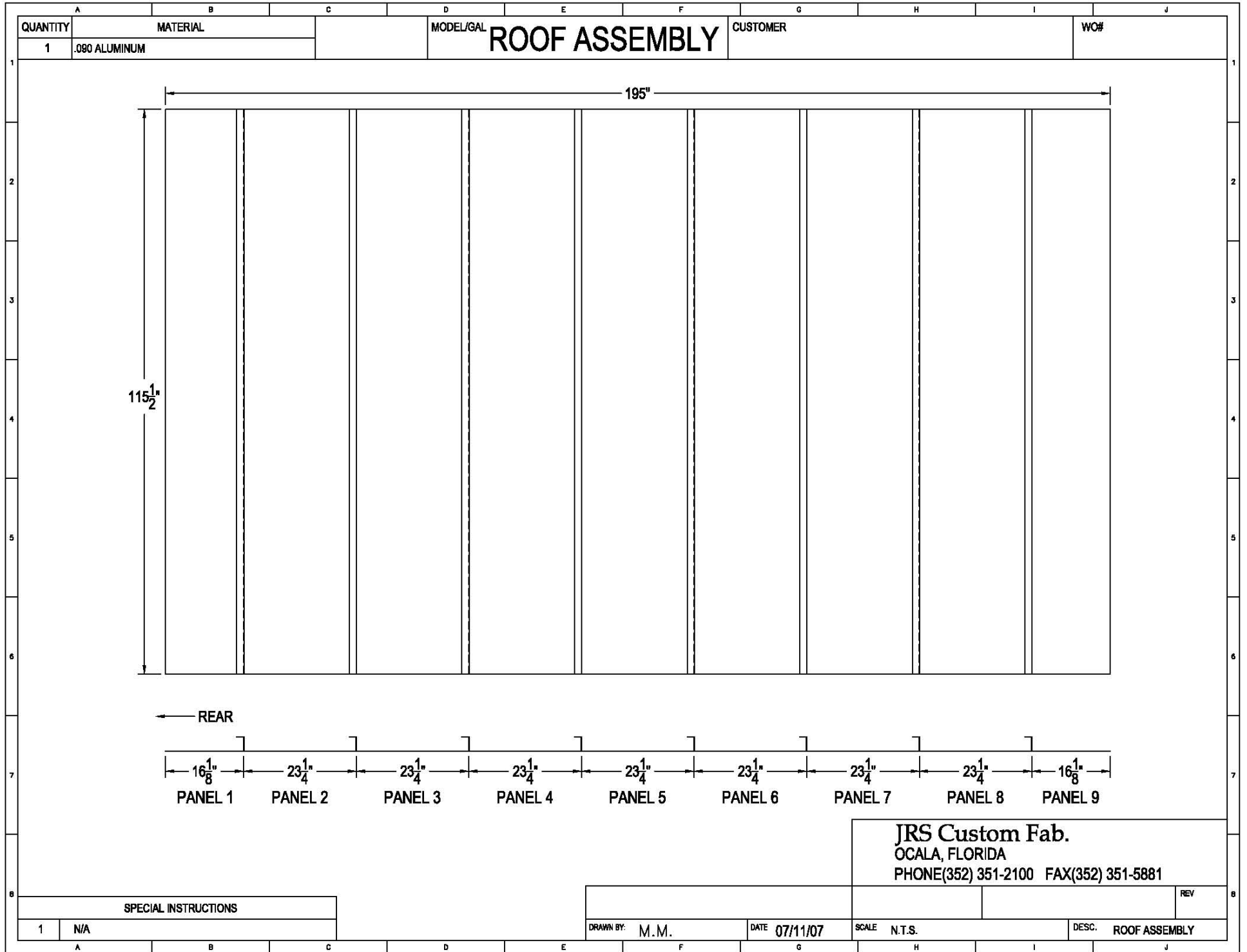
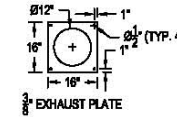
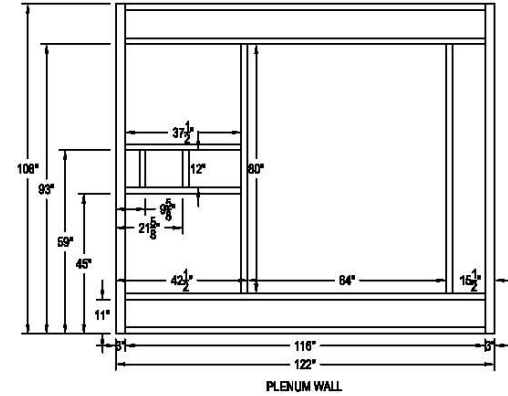
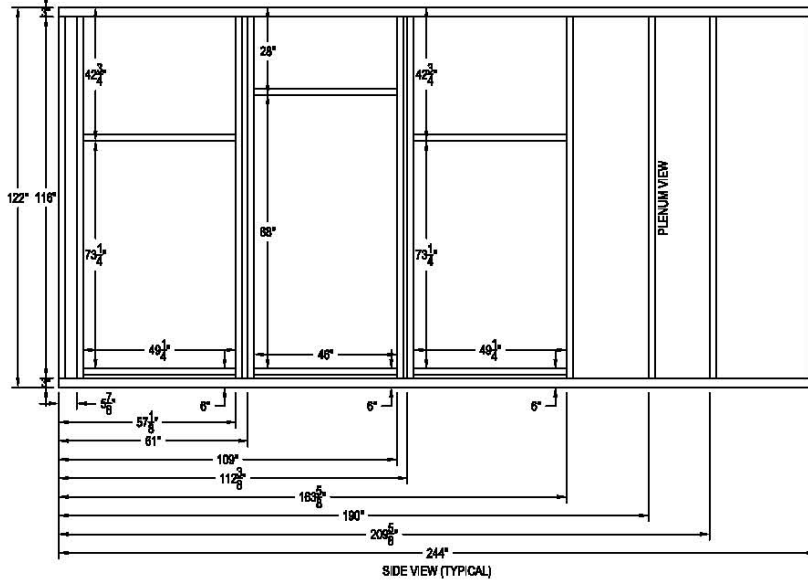
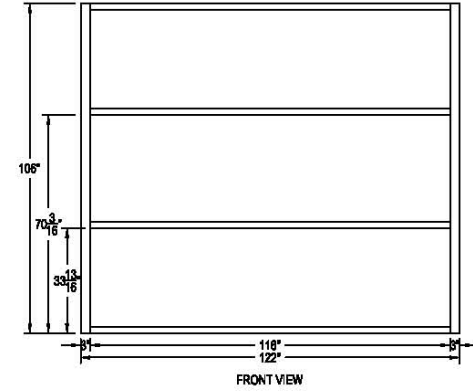
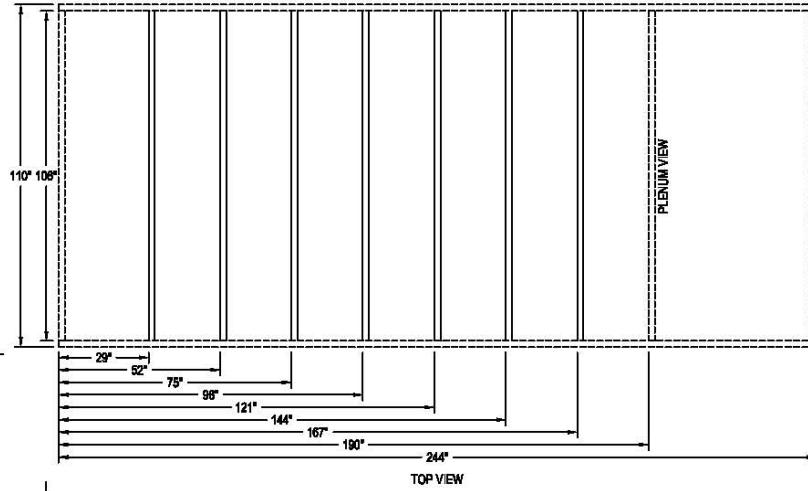
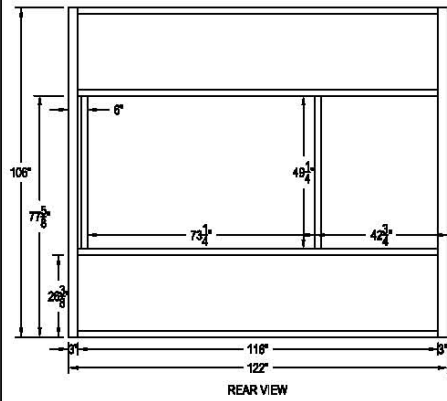


Figure 1 - Roof - Top, Rear, Front, Side (Typical) View with Quantity and Dimensions.

MATERIAL	ALUMINUM ENCLOSURE	QUANTITY	1
----------	--------------------	----------	---

REVISIONS				
ZONE	REV	DESCRIPTION	DATE	APPROVED



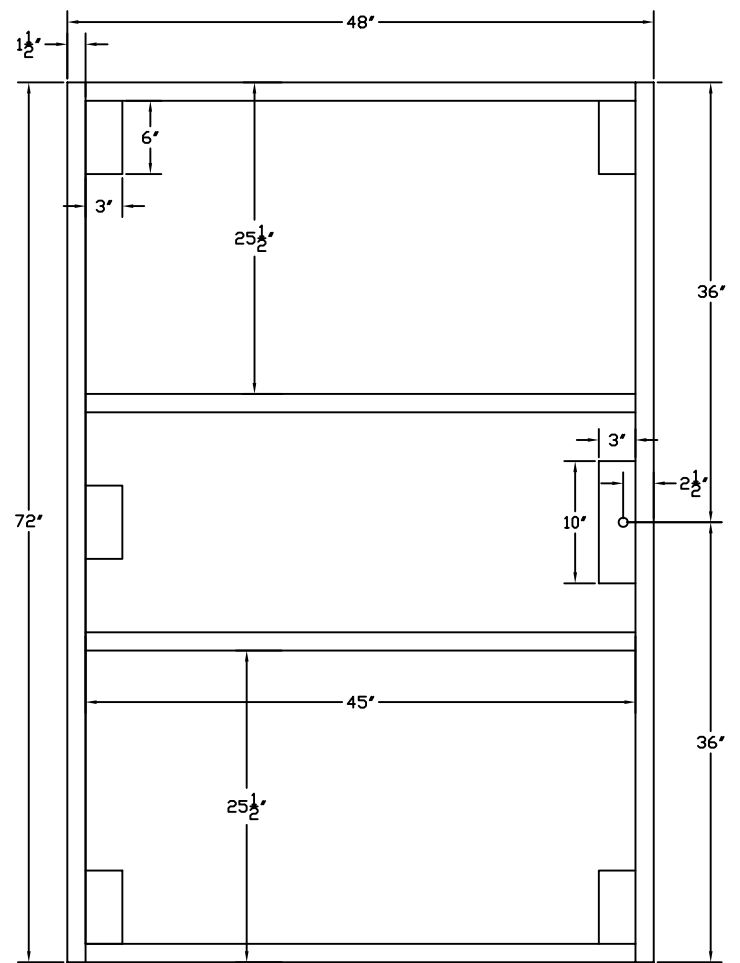
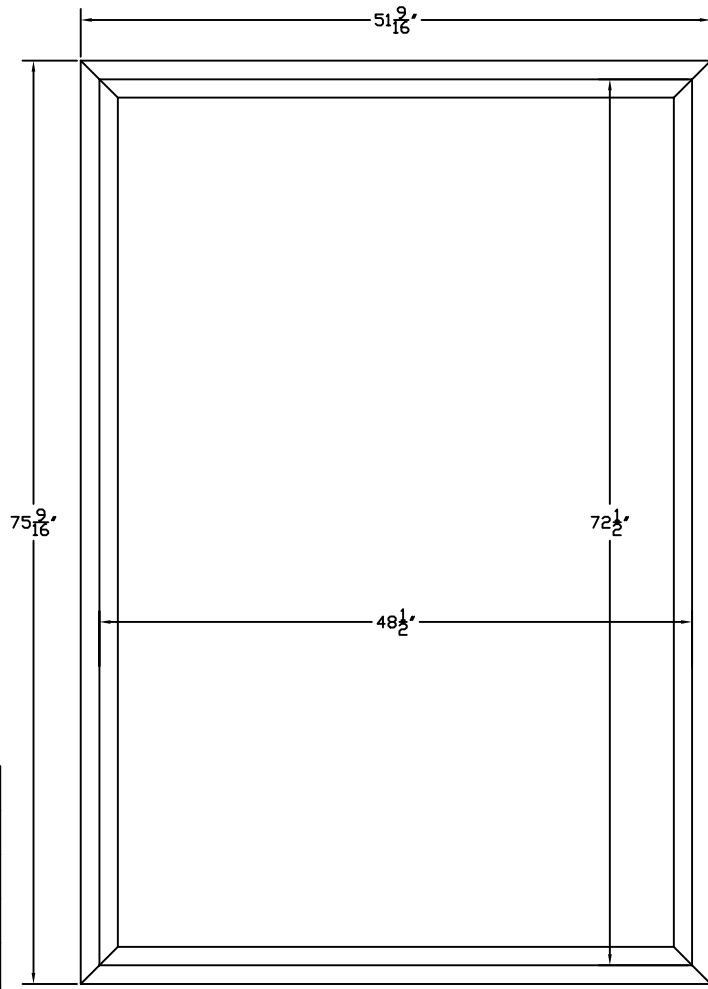
3.0" X 2" X .125 TUBING	
QUANTITY	DIMENSIONS"
4	224
6	106
2" X 2" X .125 TUBING	
QUANTITY	DIMENSIONS"
32	116
2	80
10	49-1/4
2	46
2	37-1/2
2	12
R-7	106

JRS Custom Fab.
 Ocala, Florida
 Phone (352) 351-2100 Fax (352) 351-5881

DRAWN BY: M.M.	DATE: 07/011/07	SCALE: N.T.S.	FILE #	DESC: ENC. FRAME	REV
----------------	-----------------	---------------	--------	------------------	-----

MATERIAL	ALUMINUM DOOR	QUANTITY	5
----------	---------------	----------	---

REVISIONS				
ZONE	REV	DESCRIPTION	DATE	APPROVED



.125 ALUM "Z" FRAME		
QUANTITY	DIMENSIONS"	CUT ANGLE
2	75-9/16	45°
2	51-9/16	45°

3.0" X 1.5" X .125 TUBING		
QUANTITY	DIMENSIONS"	CUT ANGLE
5	6	90°
1	10	90°

1.5" X 1.5" X .125 TUBING		
QUANTITY	DIMENSIONS"	CUT ANGLE
2	72	90°
4	45	90°

JRS Custom Fab.
 Ocala, Florida
 PHONE(352) 351-2100 FAX(352) 351-5881

			REV
--	--	--	-----

DRAWN BY: D.J.	DATE 07/11/07	SCALE N.T.S.	FILE #	DESC. 48x72 BLANK DOOR
----------------	---------------	--------------	--------	------------------------