



FLORIDA DEPARTMENT OF  
**EDUCATION**  
fldoe.org

# Career Dual Enrollment: Pathways to Florida's Workforce

Administrators' Management Meeting  
The Division of Florida Colleges  
Jhenai W. Chandler  
December 13, 2017

## STATUS OF FLORIDA'S WORKFORCE

**47%**

of Floridians hold a  
postsecondary  
credential.

**55%**

Attainment By 2025



## STATUS OF FLORIDA'S WORKFORCE

**7** of the top **15** fastest growing occupations in Florida require a certificate or associate degree

Fastest Growing Occupations	Education Level Required
Physical Therapist Assistants	Associate Degree
Home Health Aides	Certificate
Diagnostic Medical Sonographers	Certificate
Brickmasons and Blockmasons	Certificate
Web Developers	Certificate
Medical Assistants	Certificate
Personal Care Aides	Certificate

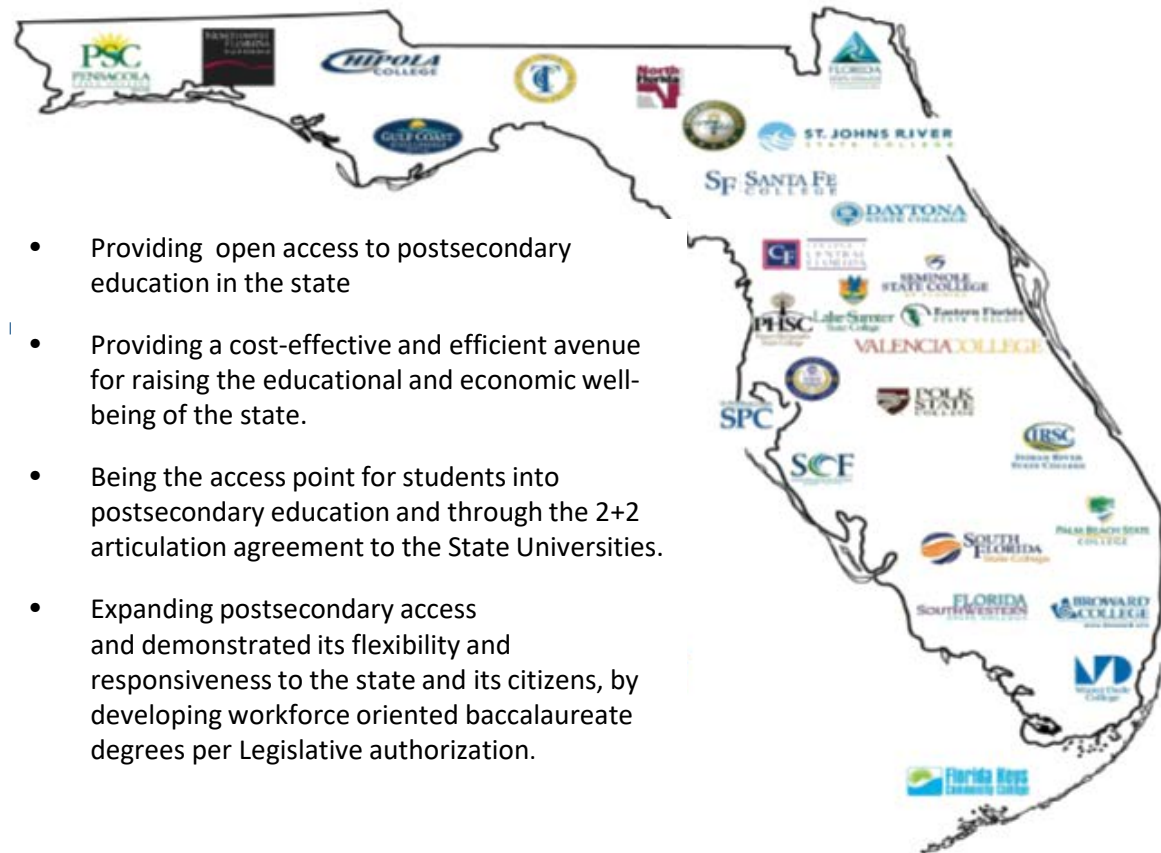
# FLORIDA COLLEGE SYSTEM

*A National Leader in Higher Education*

**28**  
Colleges

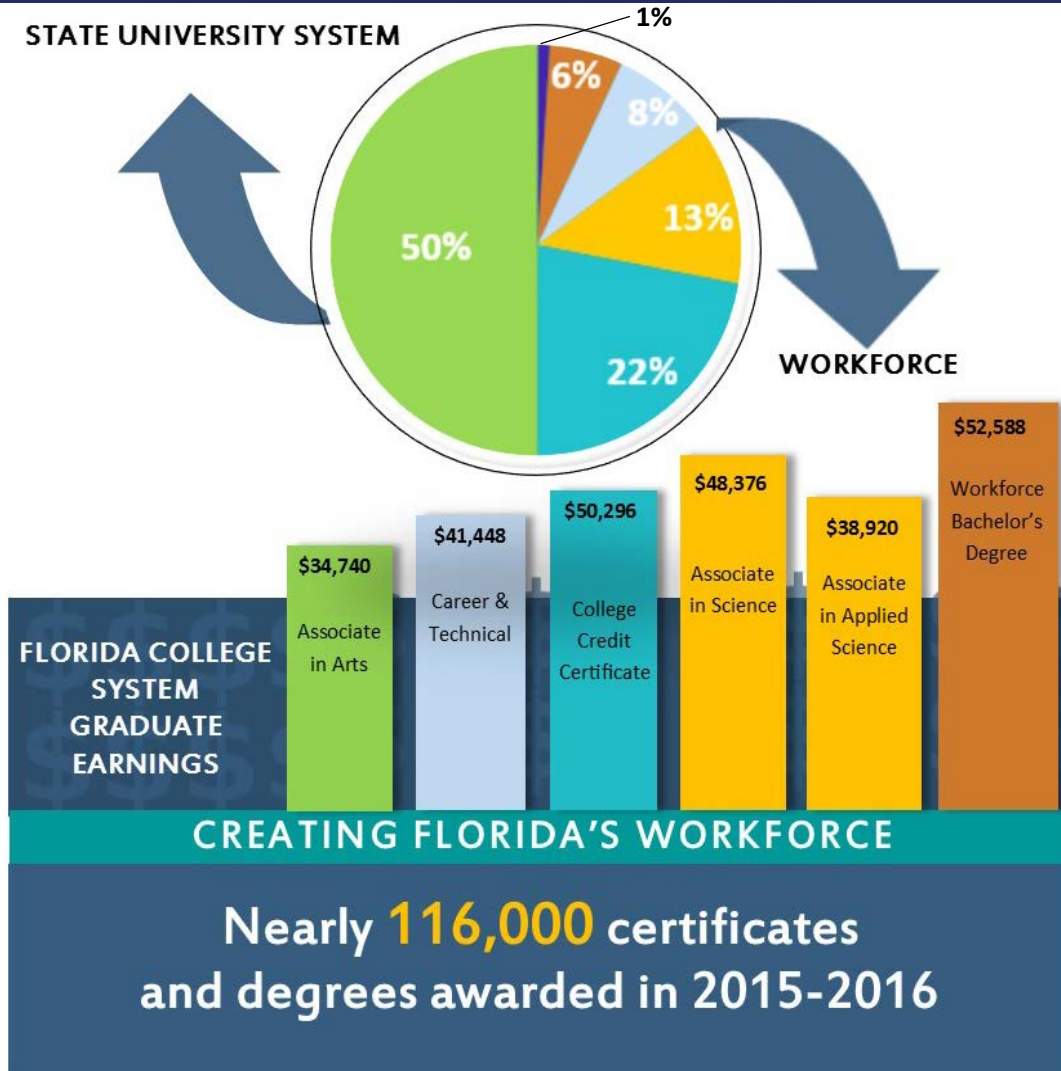
**801,023**  
Students

**25**  
Average Age



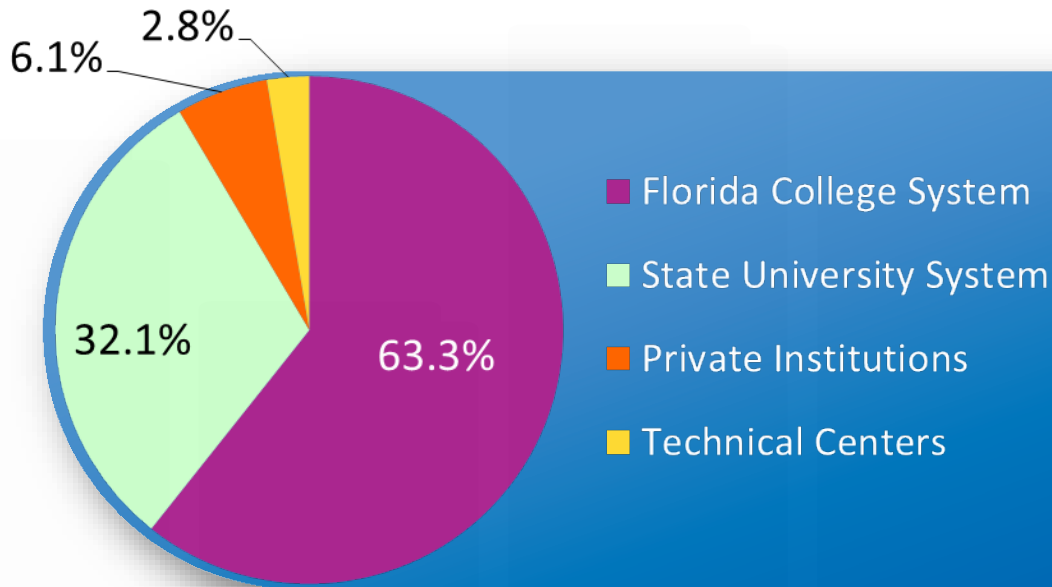
- Providing open access to postsecondary education in the state
- Providing a cost-effective and efficient avenue for raising the educational and economic well-being of the state.
- Being the access point for students into postsecondary education and through the 2+2 articulation agreement to the State Universities.
- Expanding postsecondary access and demonstrated its flexibility and responsiveness to the state and its citizens, by developing workforce oriented baccalaureate degrees per Legislative authorization.

# ALIGNING TO THE WORKFORCE



# ACCESS TO HIGHER EDUCATION

## A Pathway for Florida's High School Graduates | 2014-15



**3** out of **5**

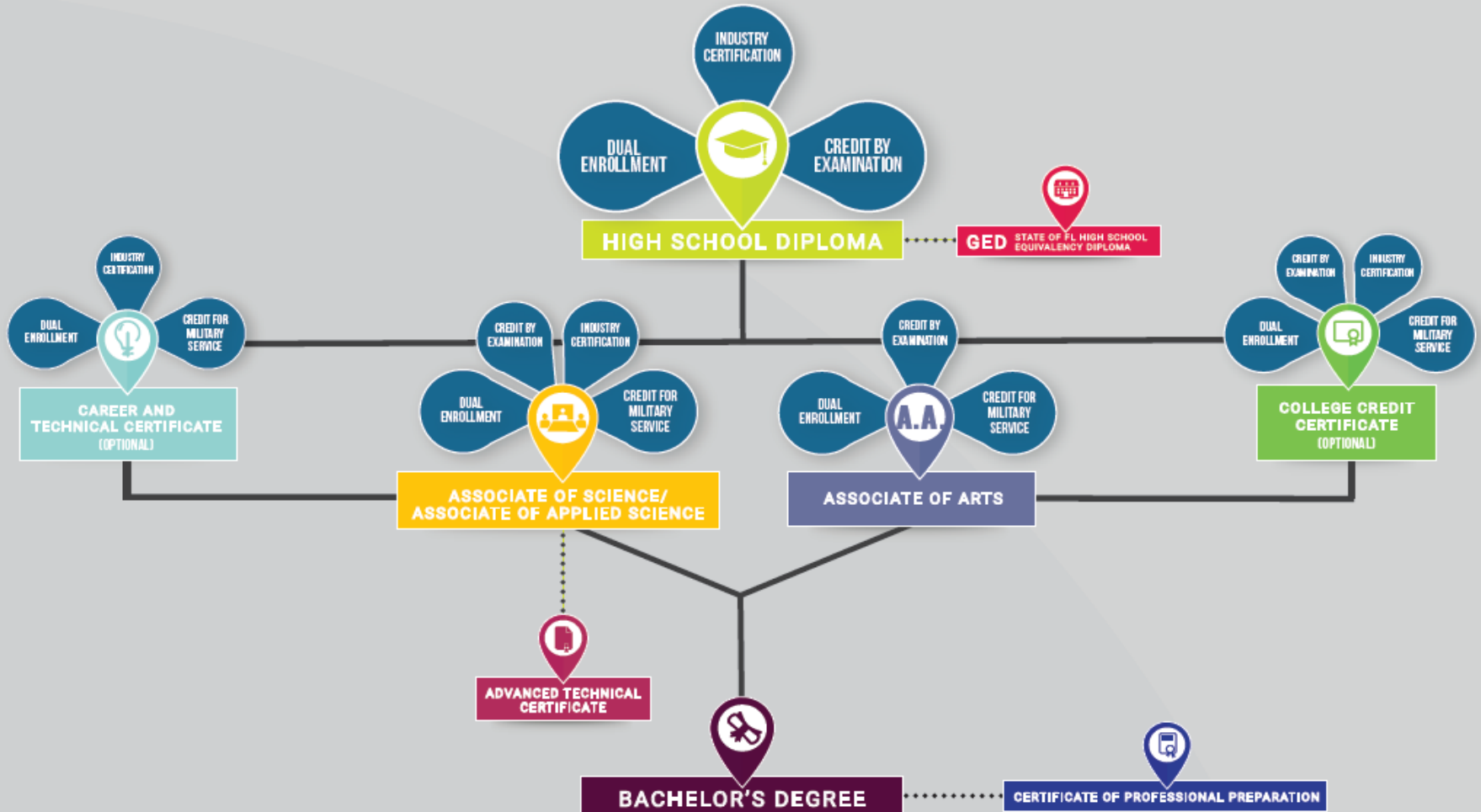
standard high school diploma recipients in 2013-14 enrolled in Florida higher education in 2014-2015

*...of these*

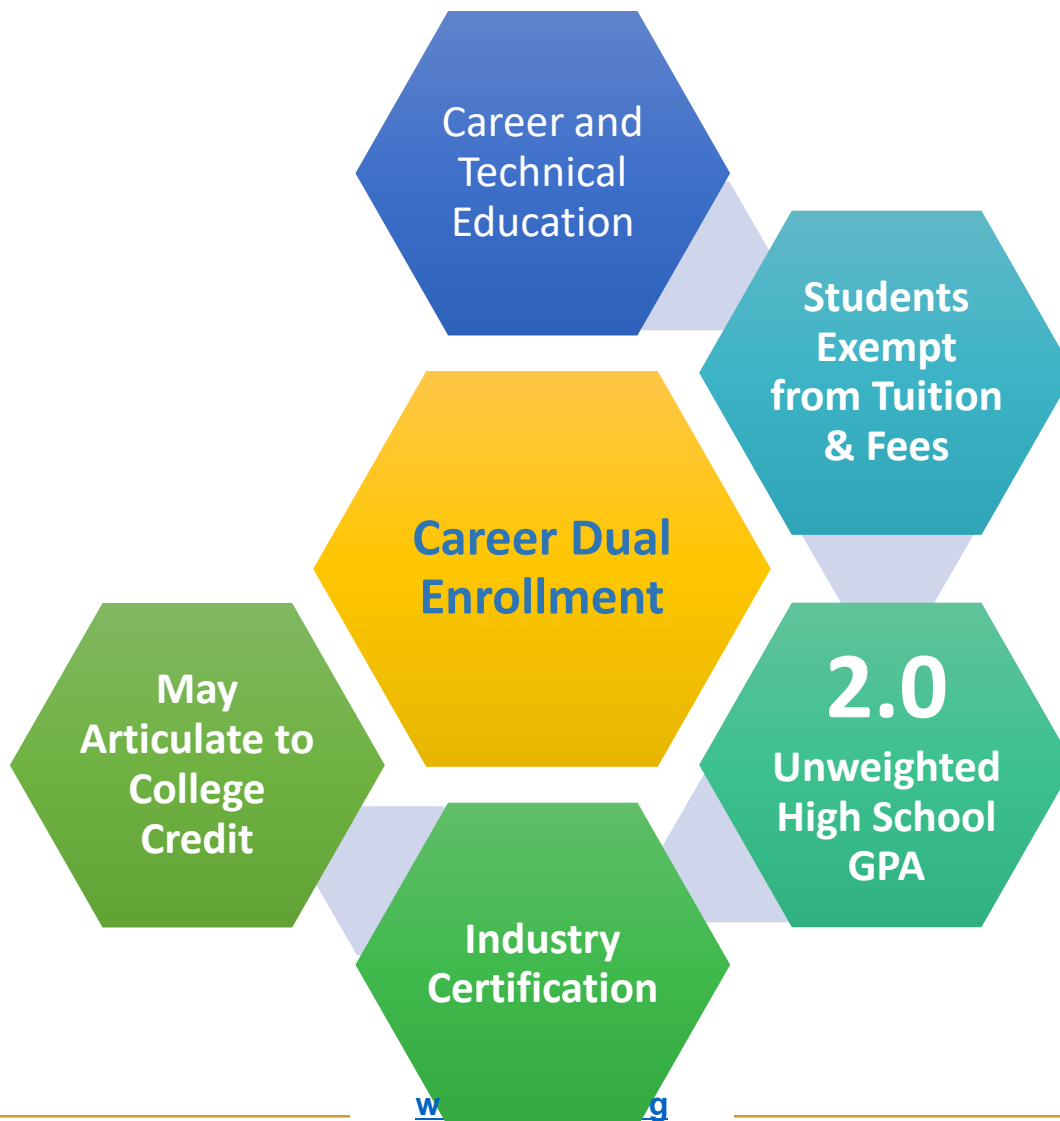
**63.3%**

enrolled in a Florida College System institution.

# ACADEMIC AND CAREER PATHWAYS



# OVERVIEW OF CAREER DUAL ENROLLMENT





## CAREER EARLY ADMISSION

### Full-time Enrollment

- Career Center
- Florida College System Institution

### Eligibility

- 2.0 Unweighted High School GPA
- Completed 4 semesters of full-time secondary enrollment

### Course Credits

- Must be creditable toward
  - High School Diploma
  - Industry Certification

## ACADEMIC ADVISING TIPS FOR CAREER DUAL ENROLLMENT

Contact Local College Academic Advisor

Identify Available Certificate Programs

Select Courses Leading to Industry Certification and Aligned with College Postsecondary Credential

Determine How Credits Satisfy High School Requirements and Postsecondary Credential

## ACADEMIC ADVISING RESOURCES

# Advising Resources

- [List of Florida Colleges](#)
- [CAPE Postsecondary Industry Funding List](#)
- [Find My College Major](#)
- [Dual Enrollment Course Equivalency](#)

## General Articulation Resources

- [Florida Counseling for Future Education Handbook](#)
- [Statewide Articulation Manual](#)

## ACADEMIC ADVISING RESOURCES

# Advising Resources

- Contact Information for FCS Student Disability Services  
[Office of Student Disability Services](#)
- Florida Department of Education, Florida College System  
<http://fldoe.org/schools/higher-ed/fl-college-system/academic-student-affairs/disability-support-services.stml>
- U.S. Department of Education, Office for Civil Rights  
<http://www2.ed.gov/about/offices/list/ocr/transition.html>

# EXPLORE YOUR OPTIONS.



## TRYING TO FIGURE OUT WHAT TO STUDY?

Selecting the college major you need for the job you want can be a challenge.



## WE ARE HERE TO HELP.

To help you make the best possible decision about a college major we made this web tool for you to explore your options.



## GET STARTED.

Get started on your path to a new career today!

## Find Your College Major

To begin enter your zip code and the miles you're able to travel to get the education you need for the career you want.









My zip code is  and  
I am able to travel  miles.

EXPLORE NOW



## CAREER PATHS

Select an area you want to learn more about. For example, if you know you want to work in a hospital or veterinarian's office, select "Heal People or Animals" below to learn more about college majors that can help you accomplish your goal.

 Create Culture	 Design or Build Things	 Develop Advancements in S.T.E.M.	 Empower Others
 Heal People or Animals	 Improve Social Wellness	 Protect & Rescue	 Run a Company

I am not sure what I want to study. What resources can help me? [Click Here.](#)

## COLLEGES NEARBY

**SELECT ONE:** PLEASE SELECT ONE COLLEGE FROM BELOW TO EXPLORE MAJORS.


<b>BROWARD COLLEGE</b>	Fort Lauderdale, FL 33301	>
<b>MIAMI DADE COLLEGE</b>	Miami, FL 33132	>
<b>PALM BEACH STATE COLLEGE</b>	Lake Worth, FL 33461	>

**BACK**

[CHANGE MY CHOICE](#)

# CHOOSE YOUR DEGREE AND MAJOR



Miami Dade College 

The main campus for **Miami Dade College** is located in **Miami, FL**.

You may be able to take courses at a closer location as this college may have multiple locations or online classes.

First, click on the certificate or degree box below.



Then, select a major listed below to learn more.

Architectural Technology

Computer  
Programming/Programmer

Electrical, Electronic and  
Communications Engineering  
Technology

BACK

[CHANGE MY CHOICE](#)

[www.FLDOE.org](http://www.FLDOE.org)



### Career Path: **Science, Technology, Engineering & Mathematics**

The main campus for **Miami Dade College** is located in **Miami, FL**.

You have selected an **Associate Degree** in **Computer Programming/Programmer**.

A program that focuses on the general writing and implementation of generic and customized programs to drive operating systems and that generally prepares individuals to apply the methods and procedures of software design and programming to software installation and maintenance. Includes instruction in software design, low- and high-level languages and program writing; program customization and linking; prototype testing; troubleshooting; and related aspects of operating systems and networks.

[LEARN MORE ABOUT THIS COLLEGE](#)

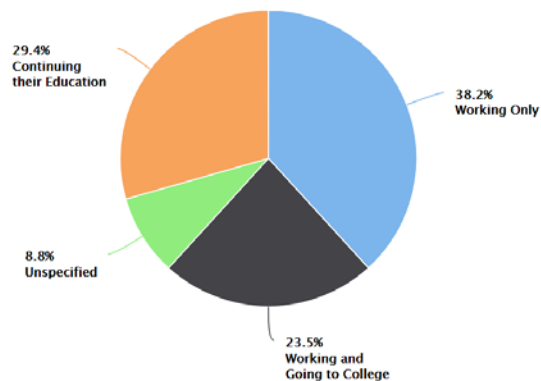
Graduates from this program who are working typically make between **\$25,772.00** and **\$44,252.00**.

If you enroll full-time, the program typically takes **2** years to complete.

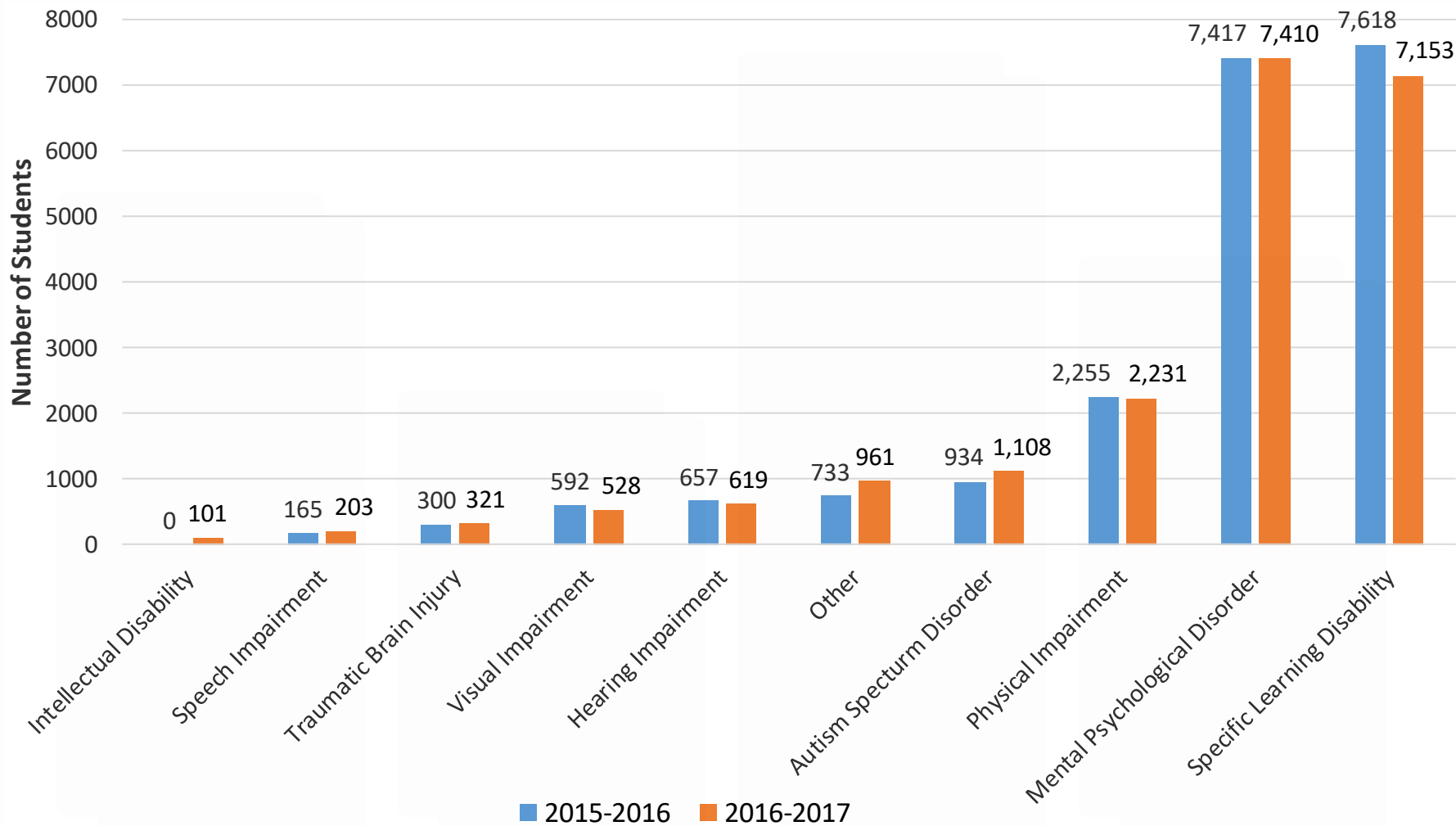
1 year of tuition and fees cost **\$3,456.60**, but student aid may make this price much lower for you. Estimate your federal financial aid using the [FAFSA 4caster](#).

The average number of graduates from this program is **34**.

What are Graduates Doing?



# 2015-2016 AND 2016-2017 STUDENT DISABILITIES DATA



[www.FLDOE.org](http://www.FLDOE.org)

# STUDENTS WITH DISABILITIES RIGHTS AND RESPONSIBILITIES

## Student Rights

- Access to Appropriate Accommodations
- Access to a Disabilities Coordinator
- Support of Personal Service Animals

## Students Responsibilities

- Must Self-Identify
- Provide Current Documentation
- Request Academic Adjustments Early
- Costs associated with new evaluations

## Contact Information

**Jhenai W. Chandler**

Coordinator of Academic Affairs

Division of Florida Colleges

Jhenai.Chandler@fldoe.org

(850) 245-9464



[www.FLDOE.org](http://www.FLDOE.org)

