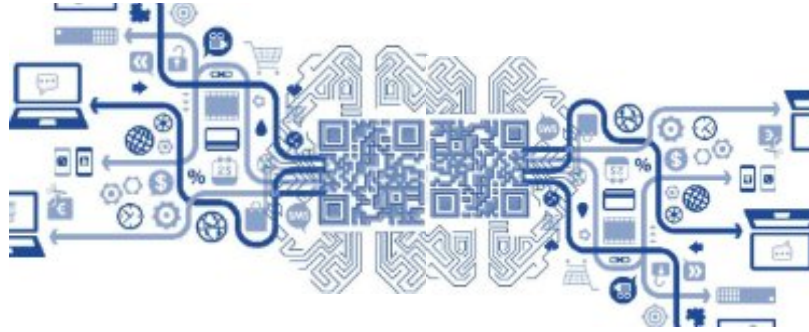


BEESS WEBSITE MAP



Links to All Divisions of the Website Can Be Found Below

- ❖ **Tab on the BEESS Homepage**
 - **Major Division of Tab**
 - **Minor Division of Tab**

[BEESS Main Page: Mission and Topics of Special Interest](#)

- ❖ [BEESS RESOURCE AND INFORMATION CENTER](#)
 - [Individuals with Disabilities Education Act \(IDEA\)](#)
 - [Meetings](#)
 - [Military Families](#)
 - [Parental Consent Form/Prior Written Notice \(fillable forms\)](#)
 - [Publications & Presentations](#)
 - [BEESS Weekly Memo](#)
 - [Presentations](#)
 - [Resources](#)
 - [Technical Assistance Papers Memos and Notes](#)
 - [The State Advisory Committee for the Education of Exceptional Students \(SAC\)](#)

- ❖ [DATA & ACCOUNTABILITY](#)
 - [Data & Program Evaluation](#)
 - [LEA Profiles Archive](#)

❖ DISPUTE RESOLUTION

➤ Due Process Hearing Orders 2015

- 2014
- 2013
- 2012
- 2011
- 2010
- 2009
- 2008
- 2007

➤ State Complaints Reports of Inquiry Redacted 2015

- 2014
- 2013
- 2012
- 2011
- 2010
- 2009
- 2008
- 2007

❖ EARLY EDUCATION & PRE-KINDERGARTEN

- Birth Through Two Years
- Ages Three Through Five

❖ ESE ELIGIBILITY

- Autism Spectrum Disorder (ASD)
- Deaf or Hard-of-Hearing (DHH)
- Developmentally Delayed
- Dual-Sensory Impairment (DSI)
- Emotional/Behavioral Disability (E/BD)
- Hospital Homebound (HH)
- Intellectual Disabilities (IND)
- Language Impairment (LI)

- [Orthopedic Impairment \(OI\)](#)
- [Other Health Impairment \(OHI\)](#)
- [Specific Learning Disabilities \(SLD\)](#)
- [Speech Impairment \(SI\)](#)
- [Traumatic Brain Injury \(TBI\)](#)
- [Visual Impairment \(VI\): Blind & Partly Sighted](#)

❖ [GIFTED EDUCATION](#)

❖ [GRANTS/DISCRETIONARY PROJECTS](#)

❖ [JUVENILE JUSTICE EDUCATION](#)

❖ [MONITORING/ESE POLICIES & PROCEDURES](#)

- [ESE Policies & Procedures \(SP&P\)](#)

❖ [PARENT INFORMATION](#)

- [Disability History & Awareness](#)
- [Exceptional Student Education Parent Survey](#)
- [Parental Consent Form/Prior Written Notice: Student Placement](#)

❖ [RELATED SERVICES](#)

- [Occupational/Physical Therapy \(OT/PT\) as a Related Service](#)

❖ [SECONDARY TRANSITION](#)

❖ [STAFF & DISTRICT CONTACTS](#)

- [Bureau Resource & Information Center Staff \(BRIC\)](#)
- [Dispute Resolution & Monitoring \(DRM\)](#)
- [Instructional Support Services \(ISS\)](#)
- [Program Accountability Assessment & Data Systems \(PAADS\)](#)
- [Statewide ESE Contact Information](#)
- [Student Support Services \(SSS\)](#)

- ❖ [STATEWIDE ASSESSMENTS \(links to other department web page\)](#)
- ❖ [STUDENT SUPPORT SERVICES \(links to outside department web page\)](#)
- ❖ [SUNSHINE CONNECTIONS \(links to outside department web page\)](#)
- ❖ [TEACHER INFORMATION](#)
 - [Professional Development](#)
 - [Statewide Continuing Education & Inservice](#)