

Florida NAEP News

October 2004

The National Assessment of Educational Progress

The NAEP 2005 Sample

NAEP will be administered in Florida from January 24 through March 4, 2005. The selection of the sample for the various NAEP assessments is described below.

Districts and schools that are eligible for NAEP participation are first classified by type of location and minority enrollment.

- In Florida, within each location and minority enrollment category, 4th graders were sorted by achievement on FCAT and 8th graders were sorted by median household income of the ZIP code where the school is located.
- Approximately 500 schools statewide in grades 4 and 8 have been selected to participate in Main NAEP in reading, mathematics, and science; the science bridge study; or a pilot assessment in reading, mathematics, civics, or U.S. history.
- Approximately 50 grade-12 sites have been selected. A smaller sample size is needed at grade 12 because only national results are provided. Grade 12 students will be participating in Main NAEP in reading, mathematics, and science; the science bridge study; and/or pilot assessments in mathematics, civics, U.S. history, or economics.

A list of all students enrolled in the grade to be assessed at all selected schools will be submitted by the Florida Department of Education to NAEP. For each sampled school, 90 students will be randomly selected (30 for each subject).

- In smaller schools, all students in the grade may be assessed.
- In larger elementary schools a sample will be identified or schools may elect to assess all students in grade 4 (up to 120 students).



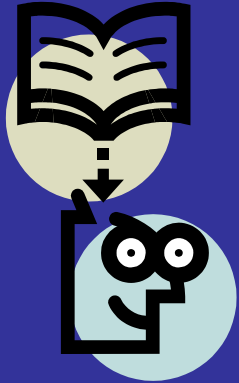
Forty-eight percent of Florida's fourth-graders could find the length of one side of a square correctly when given the perimeter on the NAEP 2003 Mathematics assessment.

Forty-six percent of the Nation's fourth graders answered the same question correctly.

The perimeter of a square is 36 inches. What is the length of one side of the square?

- A) 4 inches
- B) 6 inches
- C) 9 inches
- D) 18 inches

Where can you find sample NAEP questions?



Check out the NAEP Questions and Data Tools

<http://nces.ed.gov/nationsreportcard>

Michele Sonnenfeld
NAEP State Coordinator

Florida Department of Education

Phone:
850.245.0787

Fax:
850.245.0771

Email:
Michele.Sonnenfeld@fldoe.org

NAEP Achievement Level Definitions

Basic Denotes partial mastery of prerequisite knowledge and skills that are fundamental for proficient work at each grade.

Proficient Represents solid academic performance for each grade assessed. Students reaching this level have demonstrated competency over challenging subject matter, including subject-matter knowledge, application of such knowledge to real world situations, and analytical skills appropriate to the subject matter.

Advanced Signifies superior performance.

Contextual Background for NAEP Results

In addition to assessing subject-area knowledge and abilities, NAEP collects information from participating students, teachers, and principals about contextual or background variables related to student achievement. Four general sources provide context for NAEP:

- student questionnaires, which examine background characteristics and subject area instructional experience;
- teacher questionnaires, which gather data on teacher training and classroom instruction;
- school questionnaires, which gather information about school characteristics and policies; and
- SWD/LEP questionnaires, which provide information about students within the sample who have disabilities or are limited English proficient.

Organization of 2005 NAEP ASSESSMENT

