

District Career Dual Enrollment: 2010-11 Enrollment Report



Florida Department of Education
Division of Career and Adult Education
Kathleen Taylor, Interim Chancellor

November 2011

District Career Dual Enrollment: 2010-11 Enrollment Report

Definition of Career Dual Enrollment

Florida Statutes define dual enrollment as one of several articulated acceleration mechanisms (early admission, advanced placement, credit by examination, International Baccalaureate, and other postsecondary early entrance opportunities) where students enroll in postsecondary instruction and receive both postsecondary and secondary credit.¹ The intent is to broaden curricular options, increase depth of study options available to students, and shorten the time necessary for completing the requirements for earning a high school diploma and a postsecondary certificate or degree.

Through dual enrollment, public, private, and home education secondary students may enroll in postsecondary courses creditable toward both high school graduation and a career certificate or an associate or baccalaureate degree. There are two curricular avenues for students to participate in dual enrollment: early college (college credit) and career dual enrollment. Early college dual enrollment refers to academic or college credit coursework at the postsecondary level that leads to a college credit certificate or degree. Early college dual enrollment is available through Florida colleges and universities.

Career dual enrollment is a curricular option of elective credits toward earning the high school diploma and completing a career certificate program and is available through district career centers and Florida colleges. Career dual enrollment is not intended to enable students to take isolated courses unrelated to a program. School districts must inform all students of the option and eligibility criteria. Students participating in dual enrollment are exempt from the payment of registration, tuition, laboratory fees, and other fees, such as technology fees and parking decal fees, typically assessed with tuition.

The key feature of dual enrollment is the award of both secondary and postsecondary credit, not the location of instruction. Applied Academics for Adult Education, college preparatory instruction, developmental courses, and other pre-collegiate instruction are ineligible for dual enrollment credit because students do not receive postsecondary credit.² Physical education skills courses are also ineligible for dual enrollment.

Career Dual Enrollment Data

In 2010-11, eighty-one percent (81%) of career dual enrollment took place in district career centers and nineteen percent (19%) took place in colleges. District career dual enrollment has decreased from 4,795 students in 2009-10 to 4,096 students in 2010-11. Several districts experienced declines in their total headcount while others reported increases. For example, Orange School District, which accounted for twenty-nine percent (29%) of the total headcount of dual enrollment of students for the 2009-10 school year, reported a fifty-five percent (55%) decline in dual enrollment headcount for the 2010-11 school year. In contrast, Santa Rosa School District reported a three hundred fifty-six percent (356%) increase in dual enrollment headcount for the 2010-11 school year.

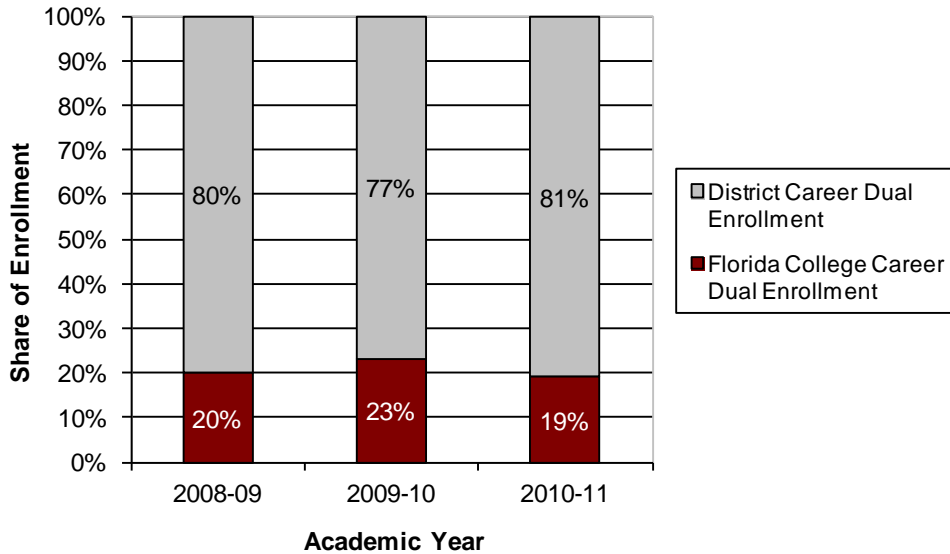
¹ Section 1007.271, F.S.

² Career preparatory instruction was renamed "Applied Academics for Adult Education" effective July 2011.

Fifty-nine percent (59%) of district career dual enrollment students in 2010-11 were male and the majority of the total population (60%) was identified as a minority. In 2010-11, Miami-Dade and Orange school districts reported the highest career dual enrollment headcount and also reported the highest career dual enrollment FTE. The district career dual enrollment programs with the highest headcounts were Aircraft/Airframe Mechanics, Commercial Foods and Culinary Arts, Criminal Justice Operations, Automotive Service Technology, and Cosmetology.

Exhibit 1

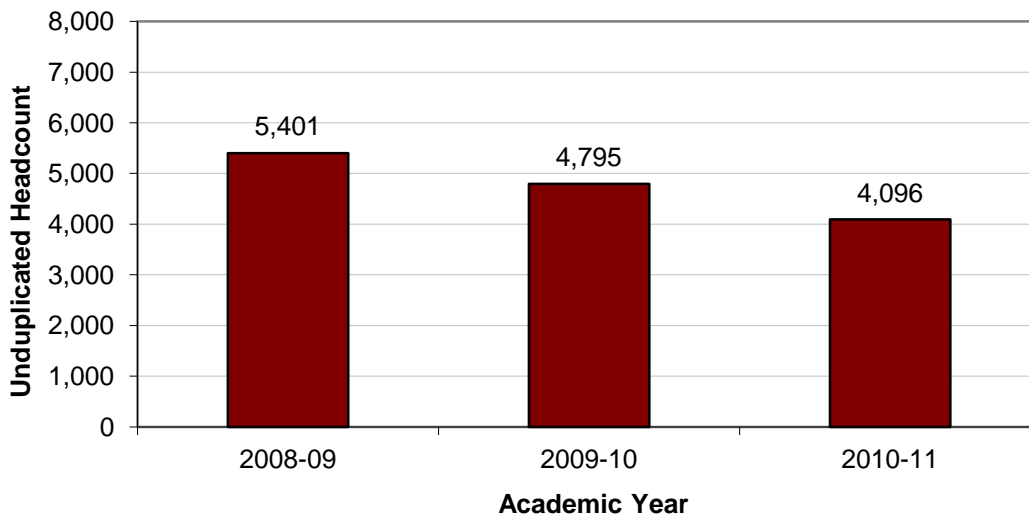
Percent of district and college career dual enrollment students from 2008-09 to 2010-11



Source: Community College Student Database and Workforce Development Information System

Exhibit 2

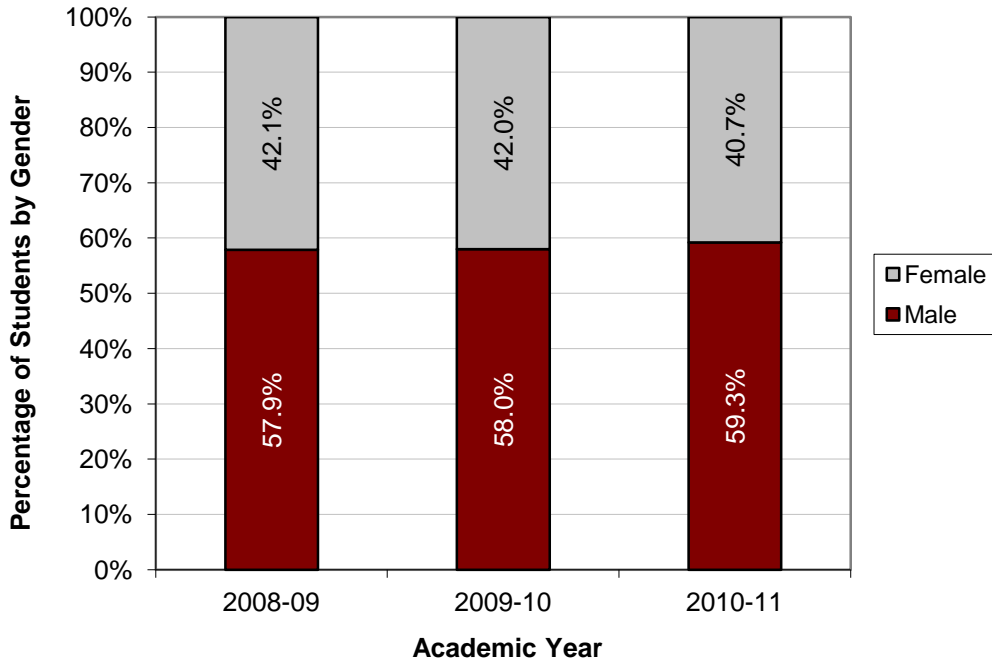
District career dual enrollment headcount from 2008-09 to 2010-11



Source: Workforce Development Information System

Exhibit 3

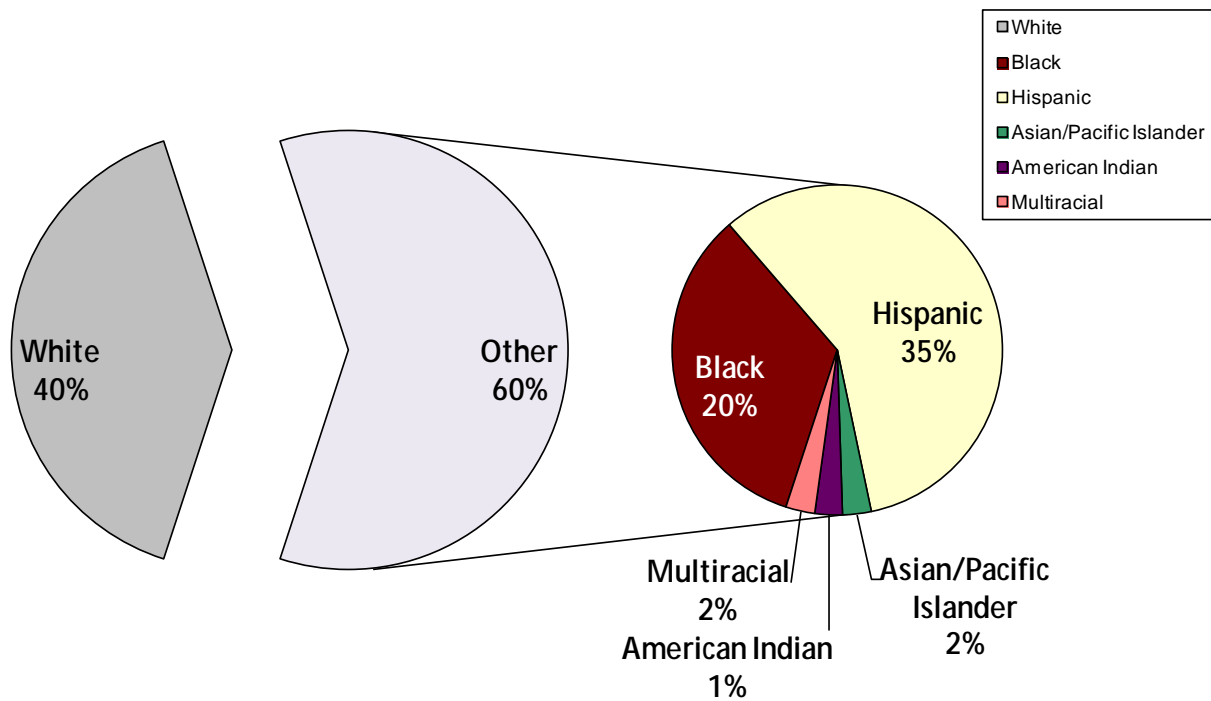
Percent of district career dual enrollment students by gender from 2008-09 to 2010-11



Source: Workforce Development Information System

Exhibit 4

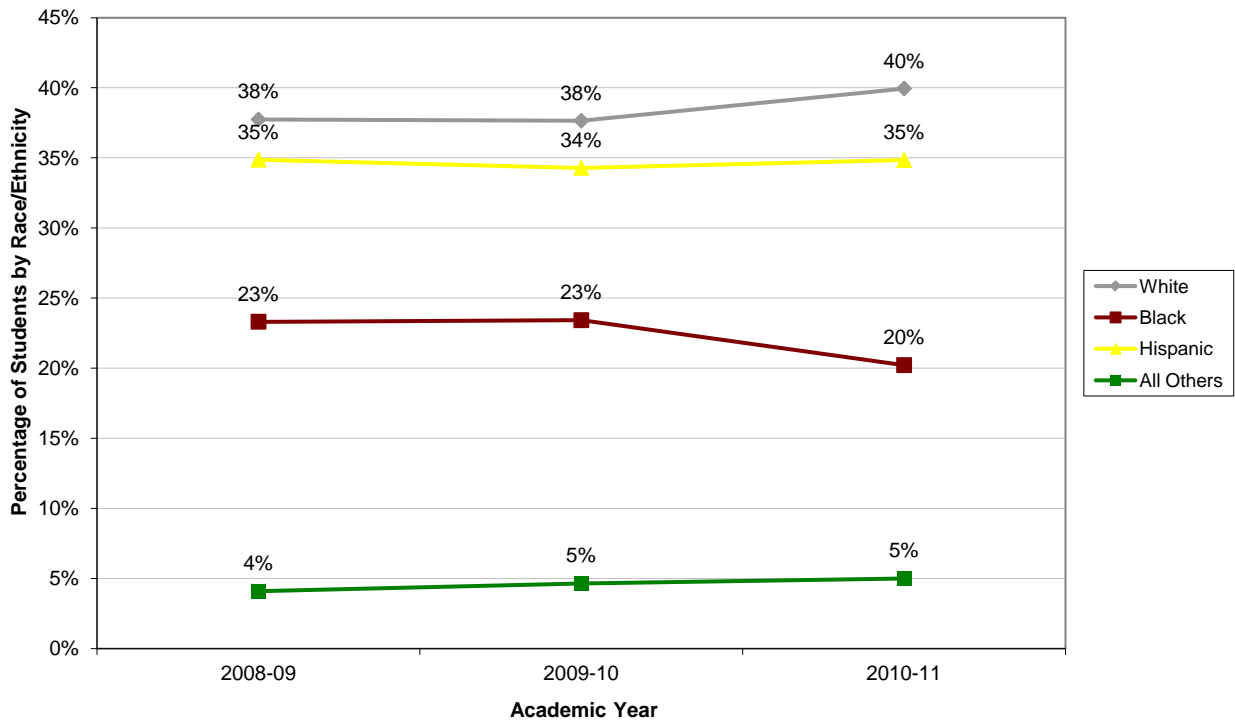
Percent of district career dual enrollment students by race/ethnicity for 2010-11



Source: Workforce Development Information System

Exhibit 5

Percent of district career dual enrollment students by race/ethnicity from 2008-09 to 2010-11



Source: Workforce Development Information System

Table 1
 Headcount of district career dual enrollment students, 2008-09 to 2010-11

Headcount of Students Dually Enrolled in District Career Certificate Programs			
District	2010-11	2009-10	2008-09
13 Miami-Dade	874	885	851
48 Orange	625	1,403	1,488
37 Leon	565	494	708
06 Broward	376	325	249
11 Collier	375	480	431
49 Osceola	290	144	408
41 Manatee	242	315	355
67 Washington	166	170	223
57 Santa Rosa	160	45	99
35 Lake	122	95	128
08 Charlotte	109	151	167
62 Taylor	45	39	46
17 Escambia	33	67	16
58 Sarasota	20	4	12
36 Lee	17	17	1
04 Bradford	16	22	55
42 Marion	16	3	9
31 Indian River	15	15	32
18 Flagler	14	24	4
09 Citrus	6	5	10
66 Walton	5	21	13
29 Hillsborough	3	4	14
03 Bay	1	5	2
61 Suwannee	1	57	64
55 St. Johns	0	5	16
Total	4,096	4,795	5,401

Source: Workforce Development Information System

Table 2
 Enrollment hours and full-time equivalents (FTE) for district career dual enrollment students,
 2008-09 to 2010-11

District Career Certificate Dual Enrollment Instructional Hours and FTE (Hours/900)							
District	2010-11		2009-10		2008-09		
	Hours	FTE	Hours	FTE	Hours	FTE	
48 Orange	276,821	307.58	672,552	747.28	767,413	852.68	
13 Miami-Dade	246,545	273.94	259,035	287.82	252,295	280.33	
11 Collier	167,853	186.50	200,105	222.34	172,516	191.68	
49 Osceola	156,916	174.35	25,228	28.03	277,360	308.18	
41 Manatee	119,491	132.77	153,613	170.68	161,190	179.10	
06 Broward	104,339	115.93	145,204	161.34	125,157	139.06	
67 Washington	62,092	68.99	47,189	52.43	103,421	114.91	
08 Charlotte	47,460	52.73	52,958	58.84	56,025	62.25	
37 Leon	45,817	50.91	81,869	90.97	121,011	134.46	
35 Lake	39,377	43.75	69,070	76.74	39,628	44.03	
57 Santa Rosa	27,815	30.91	3,254	3.62	16,517	18.35	
62 Taylor	11,765	13.07	9,688	10.76	11,971	13.30	
17 Escambia	10,524	11.69	14,794	16.44	14,944	16.60	
58 Sarasota	9,522	10.58	1,092	1.21	2,976	3.31	
36 Lee	7,182	7.98	14,784	16.43	225	0.25	
04 Bradford	4,675	5.19	5,023	5.58	10,492	11.66	
42 Marion	3,596	4.00	1,140	1.27	5,105	5.67	
18 Flagler	3,520	3.91	4,136	4.60	1,403	1.56	
09 Citrus	1,728	1.92	1,410	1.57	4,708	5.23	
66 Walton	1,613	1.79	6,280	6.98	2,496	2.77	
31 Indian River	1,435	1.59	1,125	1.25	2,060	2.29	
03 Bay	501	0.56	949	1.05	443	0.49	
29 Hillsborough	279	0.31	188	0.21	1,301	1.45	
61 Suwannee	166	0.18	9,411	10.46	6,250	6.94	
55 St. Johns	0	0.00	1,357	1.51	8,064	8.96	
Total	1,351,032	1,501.15	1,781,454	1,979.39	2,164,971	2,405.52	

Source: Workforce Development Information System

Table 3
 Headcount of district career certificate programs for 2010-11³

District Career Certificate Program by Headcount of Dual Enrollment Students	
Program	Enrollment 2010-11
Aircraft/Airframe Mechanics	452
Commercial Foods and Culinary Arts	435
Criminal Justice Operations	281
Automotive Service Technology	206
Cosmetology	186
Medical Assisting	168
Avionics	142
Aircraft Powerplant Mechanics	133
Carpentry 1	112
Practical Nursing	111
Patient Care Technician	108
Architectural Drafting	101
Television Production	99
Building Construction Technologies	76
Nursery Management	76
Automotive Service Technology 1	72
Applied Welding Technologies	69
Pharmacy Technician	68
Network Support Services	58
Nursing Assistant (Articulated)	58
Dental Assisting	57
Early Childhood Education	54
Nails Specialty	51
Automotive Detailing and Reconditioning	46
Multimedia Design Technology	46
Automotive Collision Repair and Refinishing	40
Business Computer Programming	37
3-D Animation Technology	36
Phlebotomy	36
Administrative Assistant	34
Home Health Aide (Postsecondary)	34
Medical Administrative Specialist	34
Digital Design 1	32
Facials Specialty	31
Web Design	31
Medium and Heavy Duty Truck and Bus Technician	29
Computer Systems Technology 1	26
Diversified Career Technology	26
Health Unit Coordinator (Postsecondary)	26
Commercial Photography Technology	25
Electricity	25
Computer Systems Technology	24
Game, Simulation & Animation Programming	23
Pharmacy Technician--ATD	23

³ Headcount of district career certificate programs includes duplicated count of students enrolled in multiple programs.

District Career Certificate Program by Headcount of Dual Enrollment Students	
Program	Enrollment 2010-11
Veterinary Assisting	23
Wireless Telecommunications	23
Accounting Operations	22
Automotive Collision Repair and Refinishing 1	21
Fire Fighter	19
Patient Care Assistant	19
Commercial Art Technology	18
Dental Assisting Technology and Management--ATD	18
Digital Audio Production	18
Legal Administrative Specialist	18
Lodging Operations	16
PC Support Services	15
Marketing, Merchandising, and Parts Operations 1	14
Emergency Medical Technician (Basic)--ATD	13
Printing and Graphic Communications	13
Digital Design 2	12
Machining	12
Medical Laboratory Assisting (Postsecondary)	12
Nursing Assistant (Long-Term Care)	12
Sewing Technology and Services	12
Carpentry	11
Digital Video Production	11
Electrocardiograph Technology	11
Electronic Technology	11
Marine Service Technology	11
Air Conditioning, Refrigeration and Heating Technology (PS)	10
Blueprint Reading and Estimation	10
Database and Programming Essentials	10
Environmental Services	10
Network Systems Administration	10
Air Conditioning, Refrigeration and Heating Technology 1	9
Plumbing Technology	9
Digital Printing Technology	7
Automation and Production Technology	6
Barbering	6
Customer Assistance Technology	6
Electronic Technology 1	6
Emergency Medical Technician (Basic)	6
Industrial Machinery Maintenance 1	6
Medium and Heavy Duty Truck and Bus Technician 1	6
New Media Technology	6
Optometric Assisting	6
Vocational Education for Students with Disabilities	5
Building Trades and Construction Design Technology	4
Commercial Art Technology 1	4
Heavy Equipment Mechanics	4
Interior Decorating Services	4
Major Appliance and Refrigeration Repair	4
Boatbuilding-Wood and Fabricated	3

District Career Certificate Program by Headcount of Dual Enrollment Students	
Program	Enrollment 2010-11
Commercial Photography Technology 2	3
Electrician	3
Fashion Design Services	3
Marine Service Technology 1	3
Marine Service Technology 2	3
Medical Coder/Biller--ATD	3
Medical Record Transcribing--ATD	3
Private Security Officer	3
Teacher Assisting	3
Web Programming Services	3
Automotive Service Technology 2	2
Central Service Technology	2
Correctional Officer	2
Floral Design and Marketing	2
Hospitality and Tourism	2
Carpentry 2	1
Commercial Vehicle Driving	1
Major Appliance and Refrigeration Repair 1	1
Massage Therapy	1
Mechanical Drafting	1
Medium and Heavy Duty Truck and Bus Technician 2	1
Solar Energy Technology	1
Solar Thermal System Design, Installation and Maintenance	1
Sport, Recreation, and Entertainment Marketing	1
Total	4,428

Source: Workforce Development Information System