

CTE Webinar Series

SAE For All

February 16th, 2021



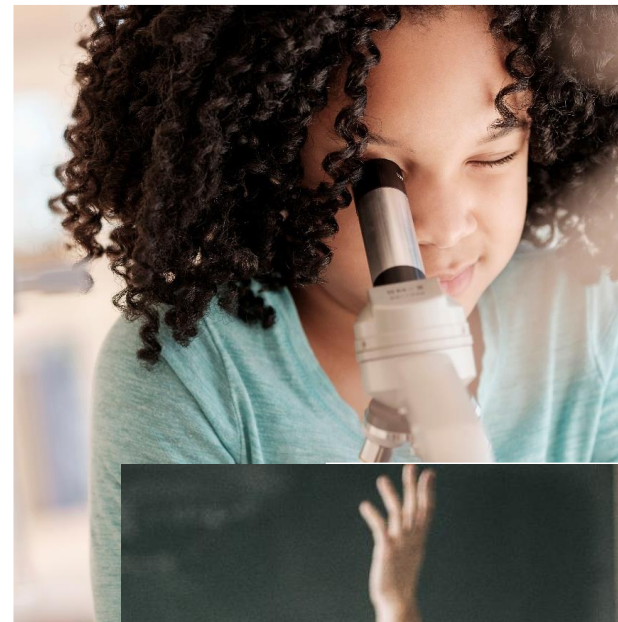
AGENDA

■ Welcome and Introductions

■ Guest Speaker Interview

■ Guest Speaker Best Practices

■ Collaboration



Getting to know you...



Background

Teaching
Career



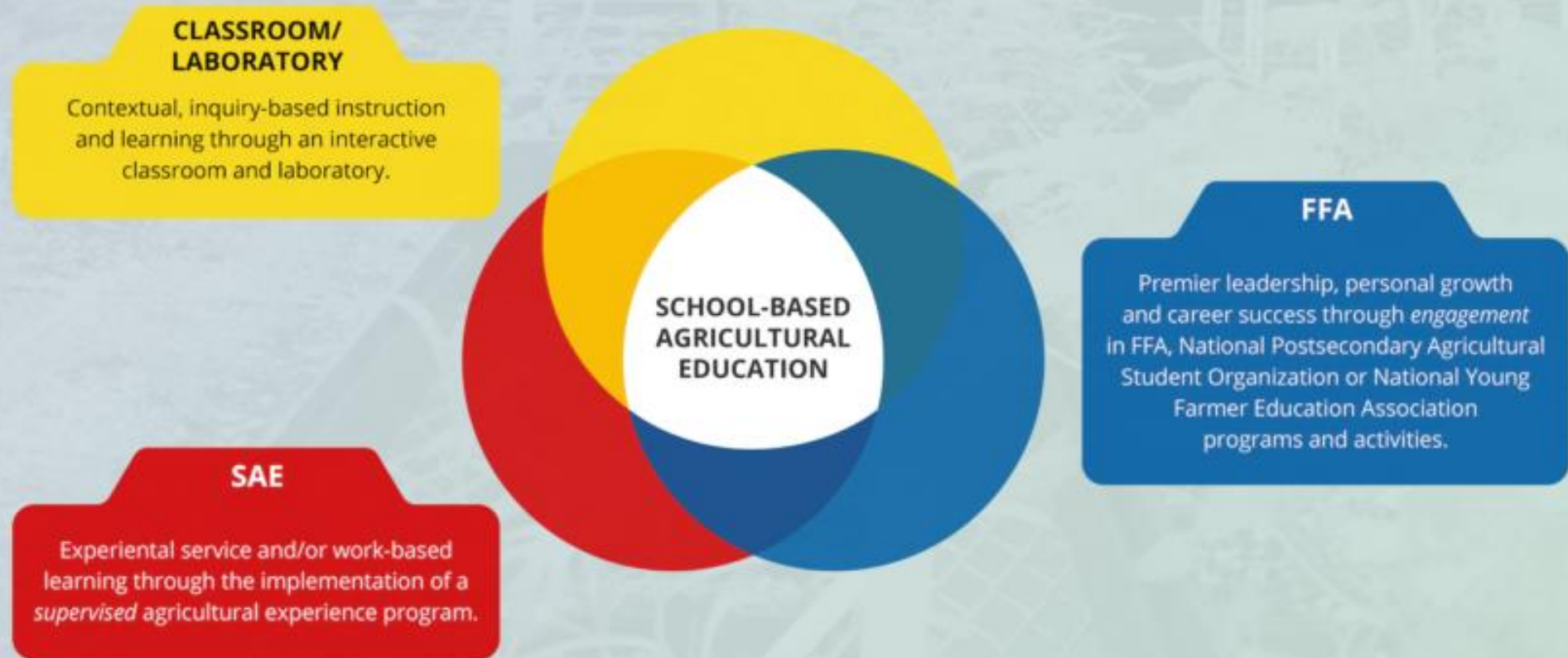
Today's
Topic

SAE For All

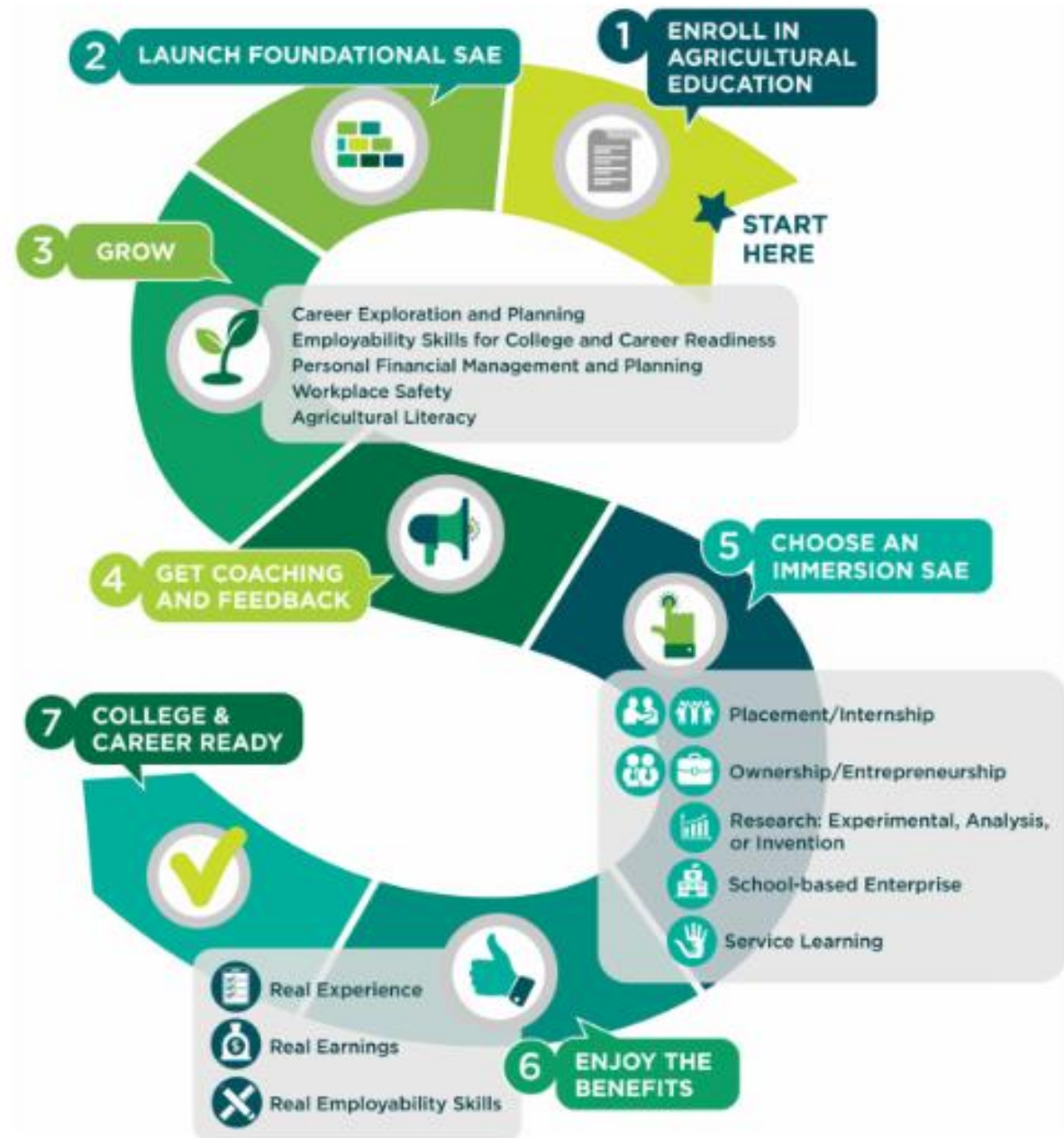
The image features two large, thick black L-shaped corner brackets. One is positioned in the top-left corner, and the other is in the bottom-right corner. They are oriented towards each other, framing the central text.

SAE FOR ALL

The Three-Component Model of Agricultural Education



SAE FOR ALL



Foundational SAE

A foundational SAE is conducted by all students in the agricultural education program including students who are on a four-year sequence and those who enroll for the semester.

Link to video: <https://saeforall.org/foundational-sae/?wizard>

Components of a Foundational SAE

Career Exploration and Planning	+
Employability Skills for College and Career Readiness	+
Personal Financial Management and Planning	+
Workplace Safety	+
Agricultural Literacy (may be transitioned to Immersion SAE)	+

Career Exploration and Planning

- In this component, students will research and explore career opportunities within the Agriculture, Food and Natural Resources industry.
- They will complete interest inventories and identify a career goal.
- Ultimately, students will be able to describe AFNR career opportunities and the path to achieving them.

6th Grade Example – Career Profile

Career Profile

Profile Picture

Cover Photo: (Setting/Location of Career)

Name of Career:

Career Focus Area:

Friends: (Who would I work with? What other careers are related?)

Interests/Groups: (What professional organizations are useful for me?)

Employability Skills for College & Career Readiness

- Through the Employability Skills component, students will develop the skills needed to succeed in both college and their career, including responsibility, communication, innovation, critical thinking and collaboration.

6th Grade Example – Employability Skills

Employability Skills for College and Career Readiness

Employability skills are needed for success in nearly all careers. They are often called cross-cutting skills since they are needed no matter the industry people work in or the specific career they have. You may have also heard them called soft skills, 21st century skills, power skills or workforce readiness skills.

1. Complete the Employability Skills in Action assessment.
2. Choose a partner next to you to evaluate your current ability for each skill using the assessment.
 - Provide the assessment tool to each individual and have them return it to you when they are complete.
 - Record the results from your friend (✓) and mentor (✓) assessments in the chart below. (If you don't have red and blue pens, utilize what you have to differentiate the results.)



Rating	(4) Usually	(3) Sometimes	(2) Seldom	(1) Never
Collaboration				
I contribute to the success of team projects and activities.				
I bring out the best in other people.				
Communication				
My writing (essays, emails and texts) is clear and easy for readers to understand.				
I present my ideas and opinions clearly and respectfully when I speak.				

Personal Financial Management & Planning

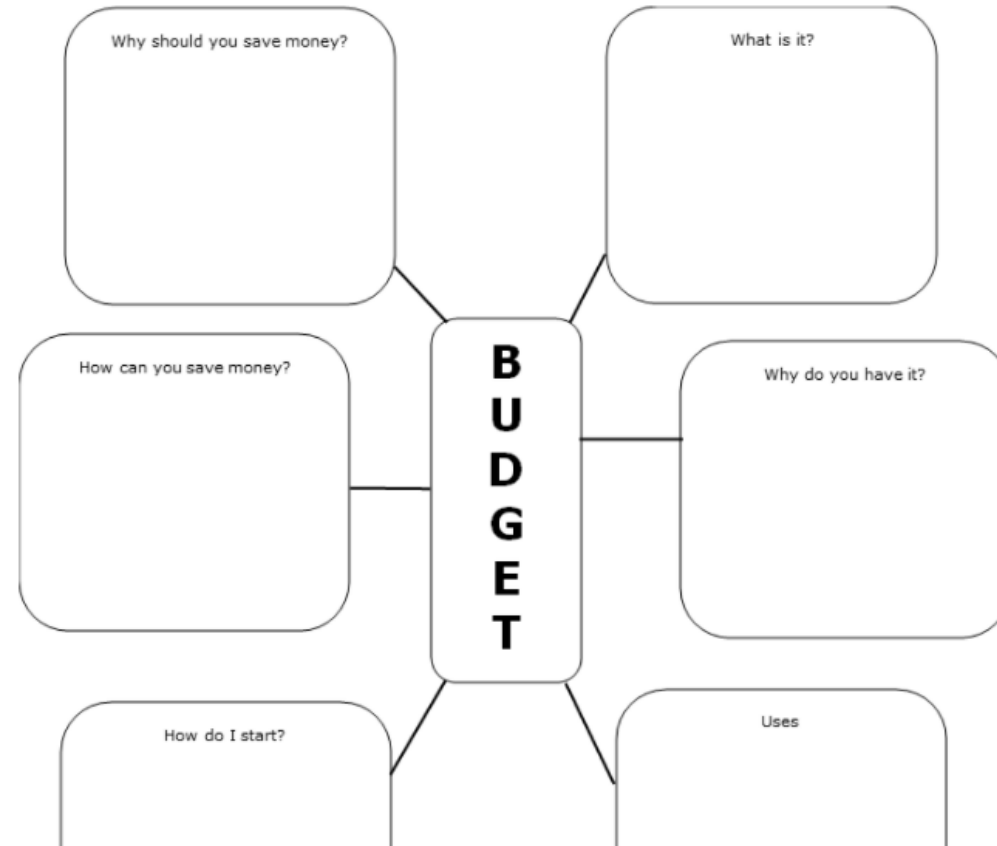
- Crafting a personal financial management plan is the focus of the Personal Financial Management and Planning component.
- Students learn how personal financial practices like budgeting, saving and appropriate use of credit lead to financial independence.

7th Grade Example – Personal Finance

Personal Financial Management and Planning

Managing your financial resources is a critical skill for personal and professional success. To get where you want to go in life, it will be important to understand how personal financial practices like budgeting, saving and appropriate use of credit lead to financial independence.

1. Visit [consumer.gov](https://www.consumer.gov/articles/1002-making-budget#twhat-it-is) (<https://www.consumer.gov/articles/1002-making-budget#twhat-it-is>).
 - > Review the "What It Is," "What to Know" and "What to Do" tabs.
 - > Complete the mind map below, focusing on **budgets** as the main topic.



8th Grade Example – Budgeting



Name: _____

Period: _____ Date: _____

Career:

	Income Total (Including Obstacles)	Expenses (including Obstacles & Extras)	Total Savings (from all days)
Day 1:			

Left over Income allocated to (include costs):

	Income Total (Including Obstacles)	Expenses (including Obstacles & Extras)	Total Savings (from all days)
Day 2:			

Left over Income allocated to (include costs):

	Income Total (Including Obstacles)	Expenses (including Obstacles & Extras)	Total Savings (from all days)
Day 3:			

Left over Income allocated to (include costs):

	Income Total (Including Obstacles)	Expenses (including Obstacles & Extras)	Total Savings (from all days)
Day 4:			

Left over Income allocated to (include costs):

	Income Total (Including Obstacles)	Expenses (including Obstacles & Extras)	Total Savings (from all days)
Day 5:			

Left over Income allocated to (include costs):

Workplace Safety

- Since some of the AFNR career pathways contain hazardous occupations, it is critical that all students have a strong base of instruction and experience with workplace safety.
- In this component, students will gain an understanding of the importance of health, safety and environmental management systems in the AFNR workplace.

Agricultural Literacy

- This component's goal is to give students an understanding of the width of the industry of agriculture.
- Students will research and analyze how issues, trends, technologies and public policies impact AFNR systems.
- They will also evaluate the nature and role that agriculture plays in society, the environment and the economy.



Students enter agricultural education.



Foundational

includes five required and graded components as a part of every course.

Awareness

Grades 6-9

Intermediate

Grades 9-11

Advanced

Grades 11-12

Career Exploration and Planning

Employability Skills for College and Career Readiness

Personal Financial Management and Planning

Workplace Safety

Agricultural Literacy

The Agricultural Literacy component of the Foundational SAE may be transitioned to one or more Immersion SAEs.

Five Immersion SAE categories allow students to enrich their experiences across three levels of motivation.

Graded

Recognition

Career-Ready



Placement/Internship



Ownership/Entrepreneurship



Research: Experimental, Analysis or Invention



School-Based Enterprise



Service Learning

Review

1. What is an SAE?
2. Explain what a Foundational SAE is?
3. What is the difference between a Foundational SAE and an Immersion SAE?

col·lab·o·ra·tion

Resources



<https://saeforall.org/>
https://thecouncil.ffa.org/raise/#/?_k=j3qosw
<https://www.ffa.org/ffa-video-center/sae-for-all/>



Amanda Ellis
acellis@volusia.k12.fl.us
Carrie Owen
cloven@volusia.k12.fl.us



Thank You

Kaitlin Vickers

State Supervisor

Agriculture, Food, & Natural Resources

Kaitlin.Vickers@fldoe.org

