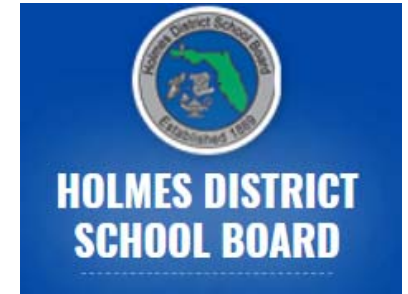


Surviving Hurricane Michael

Bill Husfelt

Superintendent of Bay District Schools



Bay debris pickup 'final pass' starts Monday

By Patrick McCrless
pmccrless@panh.com @
PCNDPanicAM

BAY COUNTY — The final pass for Hurricane Michael debris pickup begins in unincorporated Bay County and the cities of Springfield, Callaway, Parker and Mexico Beach on Monday.

The final wave of cleanup will last for about five weeks, after which any debris will

be removed at homeowners' expense. The final pass comes soon after the Florida Department of Transportation recently announced it would end its debris pickup along state highways on April 15.

Residents in the unincorporated areas of Bay County and in the cities of Springfield, Callaway, Mexico Beach and Parker are encouraged to have all debris on their curbs by the end of Sunday so the final pass

starting on Monday can move more smoothly.

"We understand that people are and have been working hard to remove debris over the last five months, and we appreciate their efforts," said Don Murray, county general services director. "Problems related to illegal dumping on the right of way on roads that have already been completed will be addressed on a case-by-case basis."

Residents are asked to sort their debris. For instance, vegetative debris should be separated from piles of housing debris. Electronics and large appliances should also be in separate piles.

Also, the debris pickup only applies to damage from the hurricane. Any debris created through home repair must be hauled off by the contractors doing the work.

Bay County has collected

more than 7.5 million cubic yards of debris in the unincorporated areas alone, and an estimated total of 15 million cubic yards of debris has been collected countywide.

Ian Satter, FDOT spokesman, said the department recently picked April 15 as its final debris pickup day.

"We're removing debris from the state road highway

See DEBRIS, A2

Hurricane Irma 2017
2 million cubic tons debris
50 counties

Hurricane Michael 2018
15 million cubic tons debris
1 county

Some of the Post Disaster Impacts

- **Population loss**
- **Housing**
- **Businesses and buildings destroyed/disrepair**
- **Large scale trauma and continued post-traumatic stress**
- **Significant loss for already fragile students and families**
- **Lack of resources**
- **Long-term economic impacts**
- **Mobility**
- **Loss of normal things ... Little League, Jr. Achievement, Elevate Bay Mentoring, etc.**
- **Disillusionment**



Bay District Schools By The Numbers

- ***Student decreases:***
 - High school -646 (10.5%)
 - Middle School -663 (14.3%)
 - Elementary -1806 (17%)
 - Special schools -75 (11%)
 - Charters -325 (6.5%)
 - PreK -75 (10.7%)
 - Bay Virtual -9% enrollment
 - Home School +266 students after the storm
- **All BDS (excluding charters) from 21,981, to 18,791 (3,190)**
 - **Decrease 3,190 (14.6%)**
 - **Decrease including charters is down (12.93%)**

(As of 3/11/19)

Bay District Schools By The Numbers

- 738 homeless students before storm; **4,830** after the storm (storm-related **4,296**)
- **481** students unaccounted for and submitted to other agencies for investigation
- School closings and consolidations due to reduction in student population and/or facility damage
- **73%** of multi-family apartments are damaged (east of beach area)
- Rebuilding of **200** damaged housing units projected for completion in **3-5** years (Panama City Housing Authority)
- **185** employees have resigned; **100** regular substitute teachers moved
- February FTE down approximately 4,000 equaling **\$13 million** loss for the 2018-2019 school year (25% of our Title 1 elementary students are gone)



Time to go



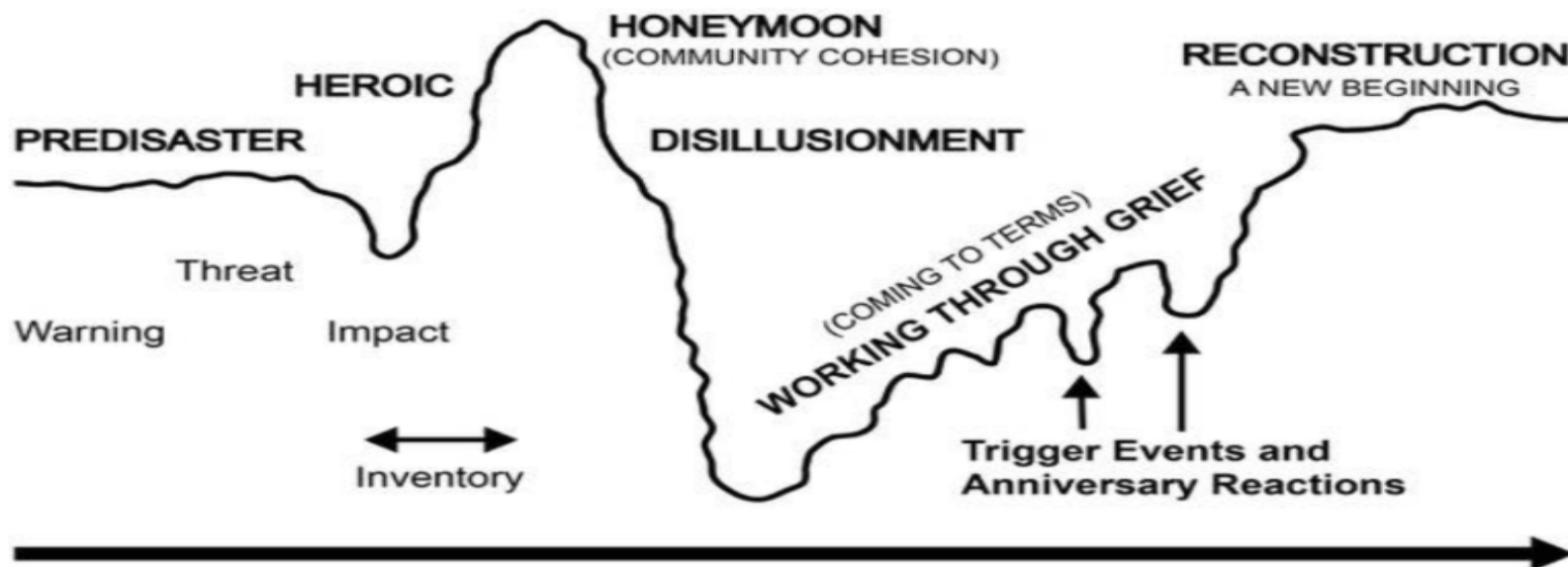
La'uanne Corcoran, 25, rides outside the family's apartment at Hawaiian Memorial Homes on Thursday. In a few days her and the family will move to another Honolulu City Housing Authority building that is well damaged. (AP/Wide World Photos)

Mental Health Concerns

- **605** student Community of Care referrals (various agencies)
- **70** Baker Acts since the schools have re-opened! (November 5)
- **35** since February 25 ...
- **62** Baker Acts since returning from Christmas Break
 - Pre-Storm support for Involuntary Examinations- **96** beds
 - Post- Storm support- **16** beds



Emotional Life Cycle of a Disaster



*Mental Coping Strategies During Hurricane Season and Other Natural Disasters,
Priscilla Dass-Brailsford, EdD, MPH*



Requests and Support

- **Graduation Requirements for the Class of 2019;**
 - Waive the state assessment requirements of current seniors. All current high school seniors who have met the 18 or 24 credit and 2.0 GPA requirements will graduate in the spring. (Statutes Implicated: § 1003.4282, Fla. Stat., § 1008.25, Fla. Stat., § 1008.22, Fla. Stat.)
- **Third Grade Promotion;**
 - Waive the state assessment requirement (1008.25(5)b) for grade 3 promotion for the 2018-2019 school year. Promotion will be based on a preponderance of evidence to include district assessment measures. (Statutes Implicated: § 1008.25(5)b., Fla. Stat.)



Requests and Support

- **Performance Results;**

- Calculate the 2018-2019 district/school grades as informational only.
- Do not include 2018-2019 student performance results in the state VAM. The VAM is a multi-year calculation and the 2018-2019 results would unfairly be included for up to 3 years. (Statutes Implicated: § 1012.34, Fla. Stat., § 1008.34, Fla. Stat.)
- Utilize the 2017-2018 school grades and summative teacher evaluation scores for any calculations related to Best and Brightest Bonuses, A+ money, and other performance-based bonuses. (Statutes Implicated: § 1012.731, Fla. Stat., § 1008.36, Fla. Stat.)

- **Turnaround and Differentiated Accountability;**

- Suspend the status of any Turn-Around and Differentiated Accountability school for the remainder of this school year and for 2019-2020 following school year (to include schools identified using the ESSA sub group calculation). At the conclusion of the 2019-20 school year, reevaluate each school's status (Statutes Implicated: § 1008.33, Fla. Stat.)



Requests and Support

- **Funding:**

- \$16 million to develop and implement a Plan for Recovery to include: a determination of mental health support available in the community, screenings for impacted students and staff, intervention training for staff, and a long-term plan for intervention. A specific Plan for Recovery is critical because of the catastrophic impact this storm has left behind.
- A second Community Action Team (CAT) to provide additional intensive family-oriented and comprehensive behavioral health treatment for youth ages 11 to 21 years.



Total District Estimated Capital Costs:

Cost Type	Total Cost
Temporary Portables	\$8,776,600
Remediation (Temp Repairs)	\$42,078,817
Permanent Repairs	\$252,850,000
Buses/Vehicles	\$1,300,000
Contents	\$25,000,000
Total	\$330,005,417

Note: Costs will be partially covered by \$100M insurance proceeds.



PANAMA CITY

LIVING

BUILDING
STRENGTH AFTER
HURRICANE
MICHAEL

