

Florida's Graduation Rate
Calculation: Implications for the
Standardized National
Calculation

New NCLB Regulations 34 CFR 200

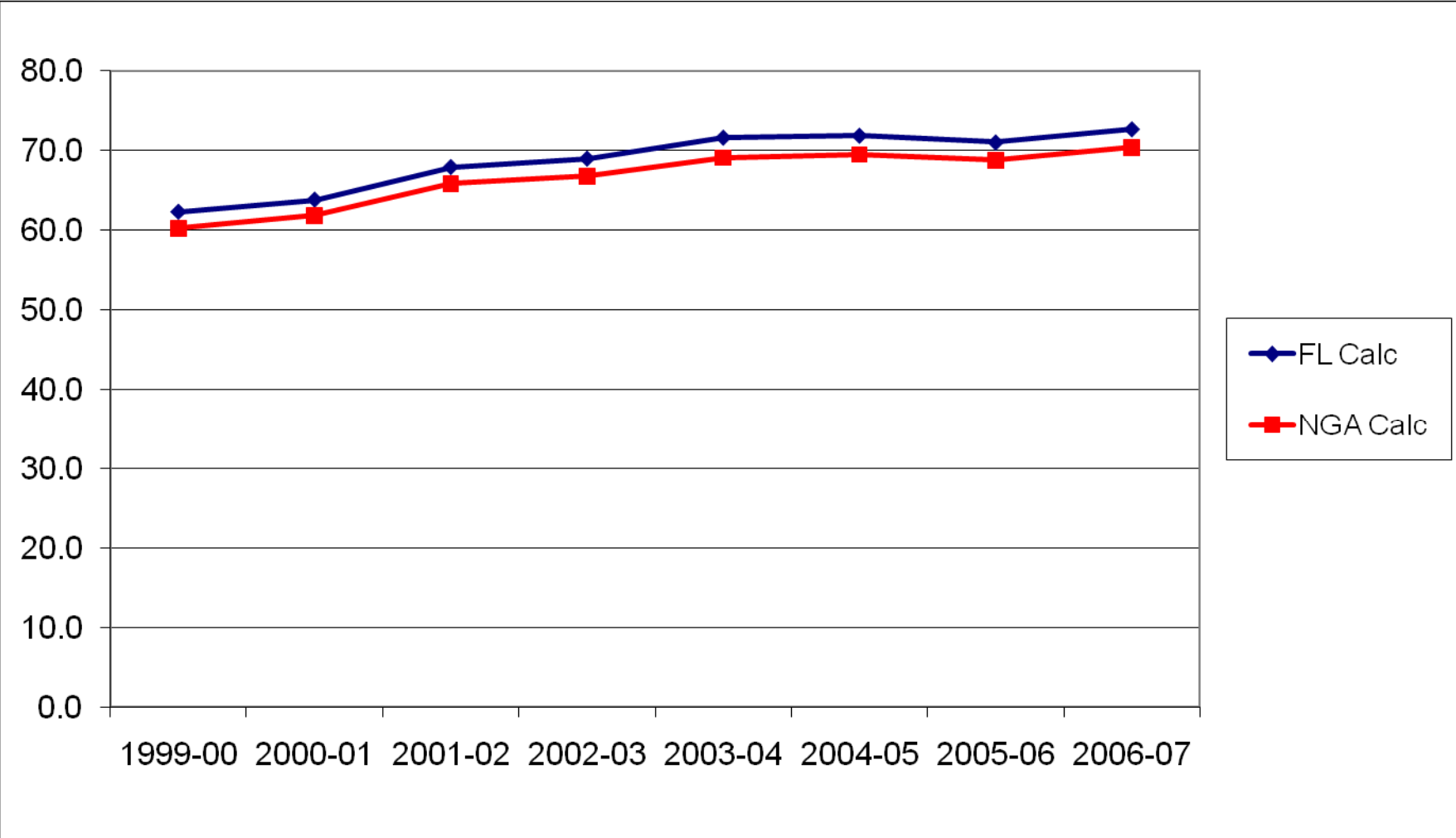
Uniform High School Graduation Rate

- Defines HS graduate rate as the number of students who exit in the standard number of years with a **regular** high school diploma divided by the number of students who entered 9th grade four years earlier – adjusted for transfers in and out.
- Calculation must include disaggregations by race, gender, and low income status.
- States must implement by 2010-2011; interim formula may be used for states lacking the capability to account for all elements of the formula.
- GED and Special Diploma recipients would be considered “non-graduates”.
- Permits states to propose an alternate definition of “standard number of years” for limited categories of students under certain conditions.

Graduation Rate Calculations

- Florida's regular rate includes all diploma recipients. This includes standard and special diplomas as well as regular and adult GEDs.
- The NCLB graduation rate includes standard diplomas and regular GEDs but excludes the special diplomas and the adult GEDs.
- NGA Compact includes standard and special diplomas but excludes all GEDs, regular and adult.
- New Standard Calculation includes standard diplomas, excludes GEDs and Special Diplomas.

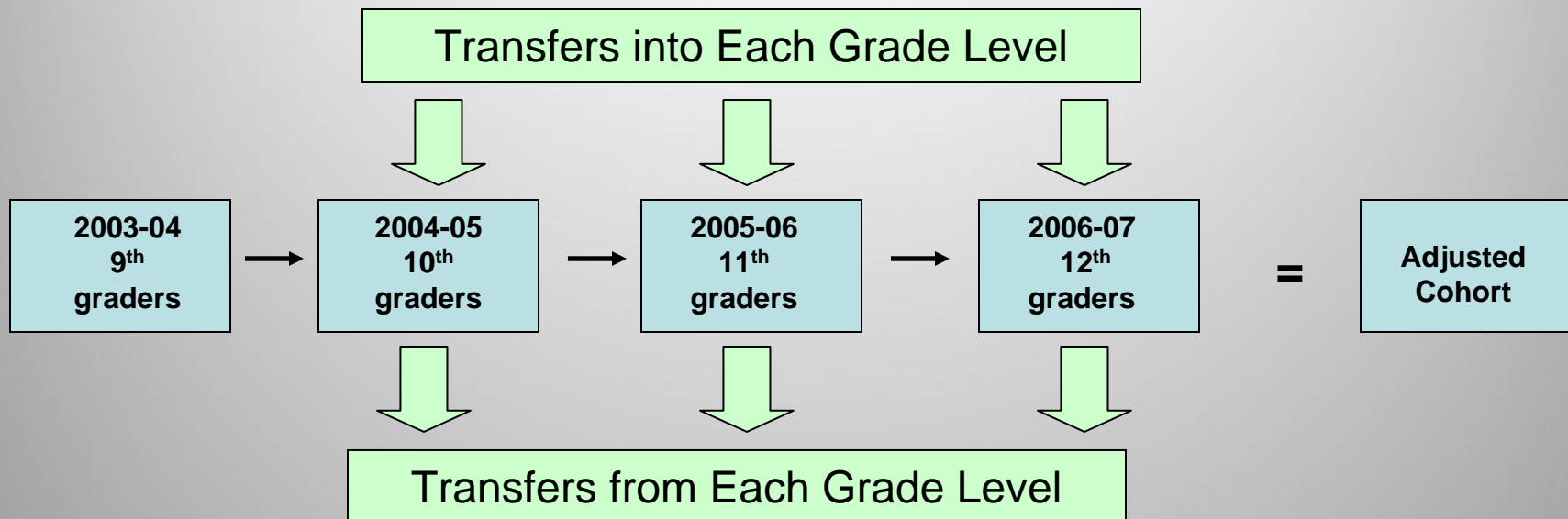
Florida Rates: Regular High School Graduation Rate and the NGA Compact Graduation Rate



Source: Education Information and Accountability Services

Florida's Adjusted Cohort High School Four Year Graduation Rate

Illustrated for 2006-2007's Graduates

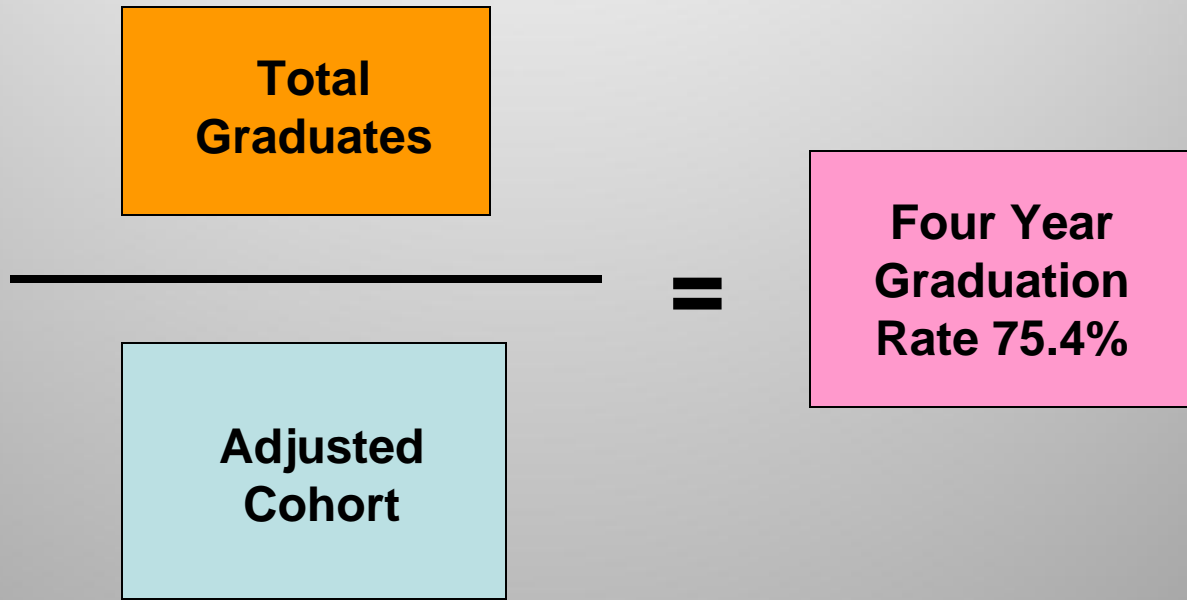


The Denominator

$$\text{Adjusted Cohort} - \text{Students not graduating} - \text{Dropouts during the 4 years} = \text{Total Graduates}$$

The Numerator

Florida's Adjusted Cohort High School Four Year Graduation Rate Illustrated for 2006-2007's Graduates



Source: Florida's Regular Graduation Rate for 2008 - Education Information and Accountability Services, Florida DOE

Implementation Issues

- Documenting Transfers Out:
 - Charter School, Home School & Private School
 - Out of state
 - Adult Education
- Transfers In:
 - New Enrollees
- Defining “graduates” with a standard high school diploma in Florida