



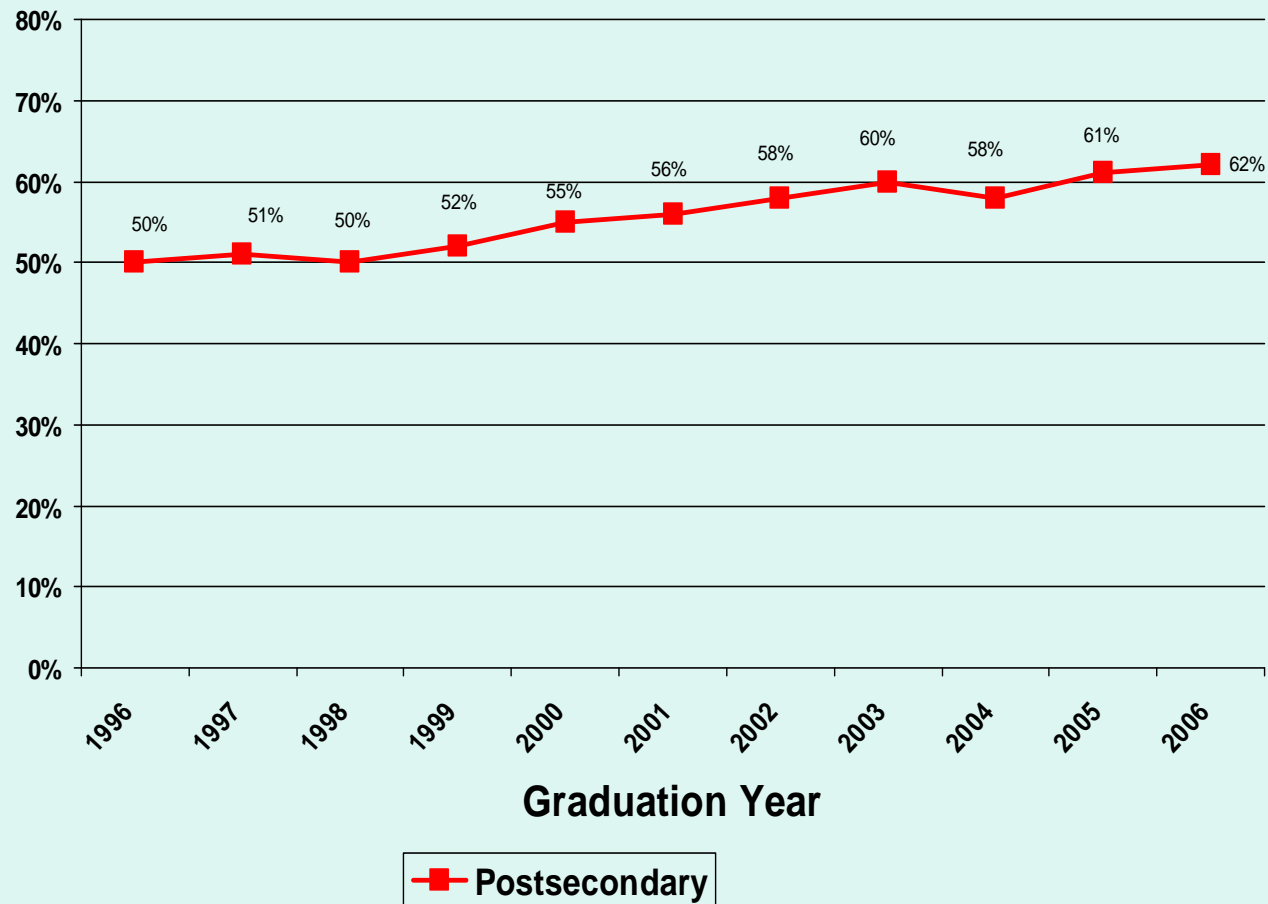
Go Higher, Florida! Task Force

Dr. Judith Bilsky

Division of Community Colleges

October 11, 2007

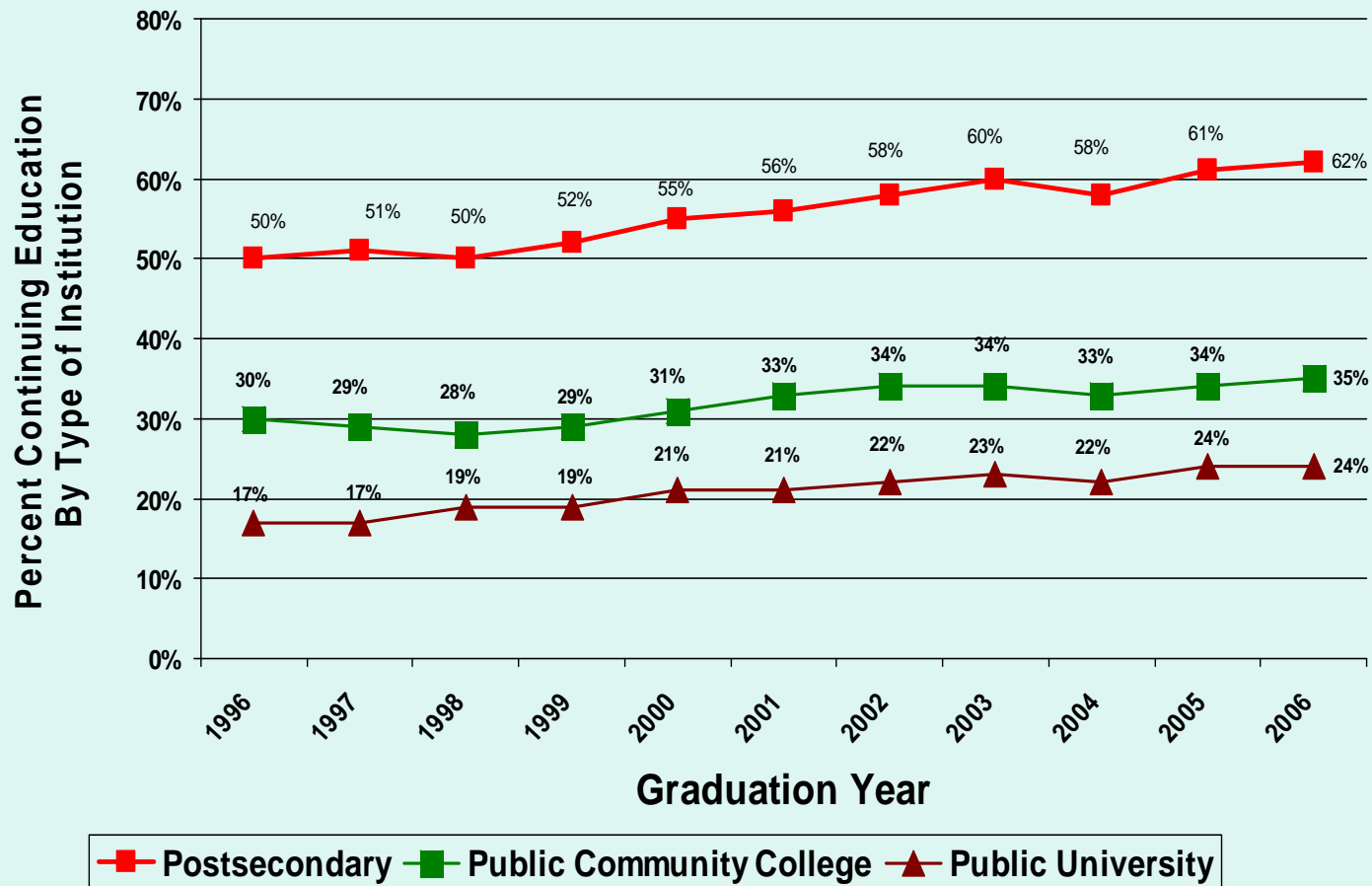
Rate* Attending Postsecondary in the Fall Following Graduation



* Percentage of high school graduates who were enrolled in October after completing high school

Source: Florida Employment & Training Placement Information Program (FETPIP), Florida Department of Education.

Rate* Attending Postsecondary in the Fall Following Graduation



* Percentage of high school graduates who were enrolled in October after completing high school

Source: Florida Employment & Training Placement Information Program (FETPIP), Florida Department of Education.

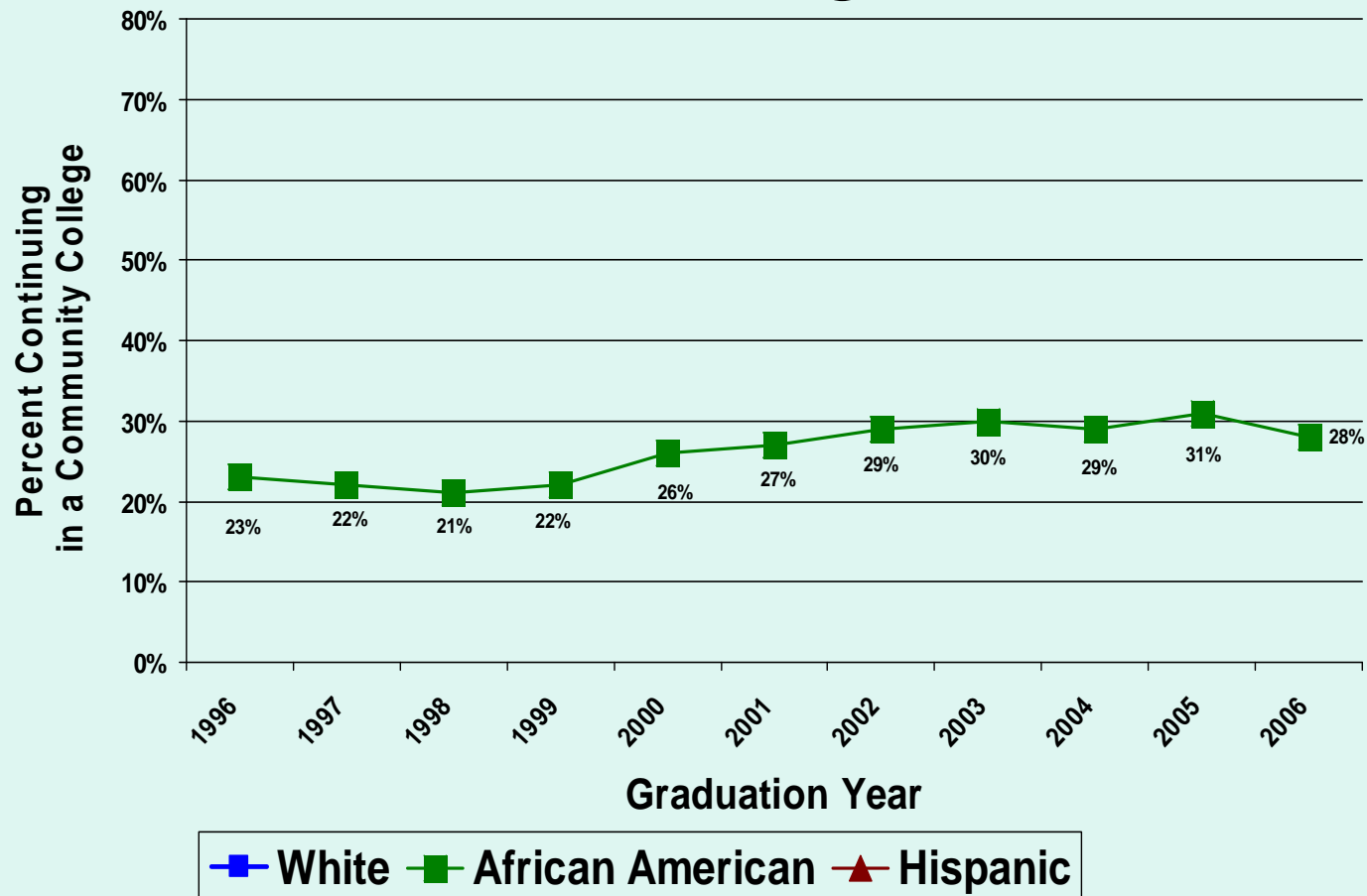
Where Do High School Grads of 2005-06 Continue* Education

Entered Florida Public Community College	35%
Entered Florida Public University	24%
Entered Florida Private University	4%
Other Postsecondary	1%
Total	62%

Percentage of high school graduates who were enrolled in October after completing high school

Source: Florida Employment & Training Placement Information Program (FETPIP), Florida Department of Education.

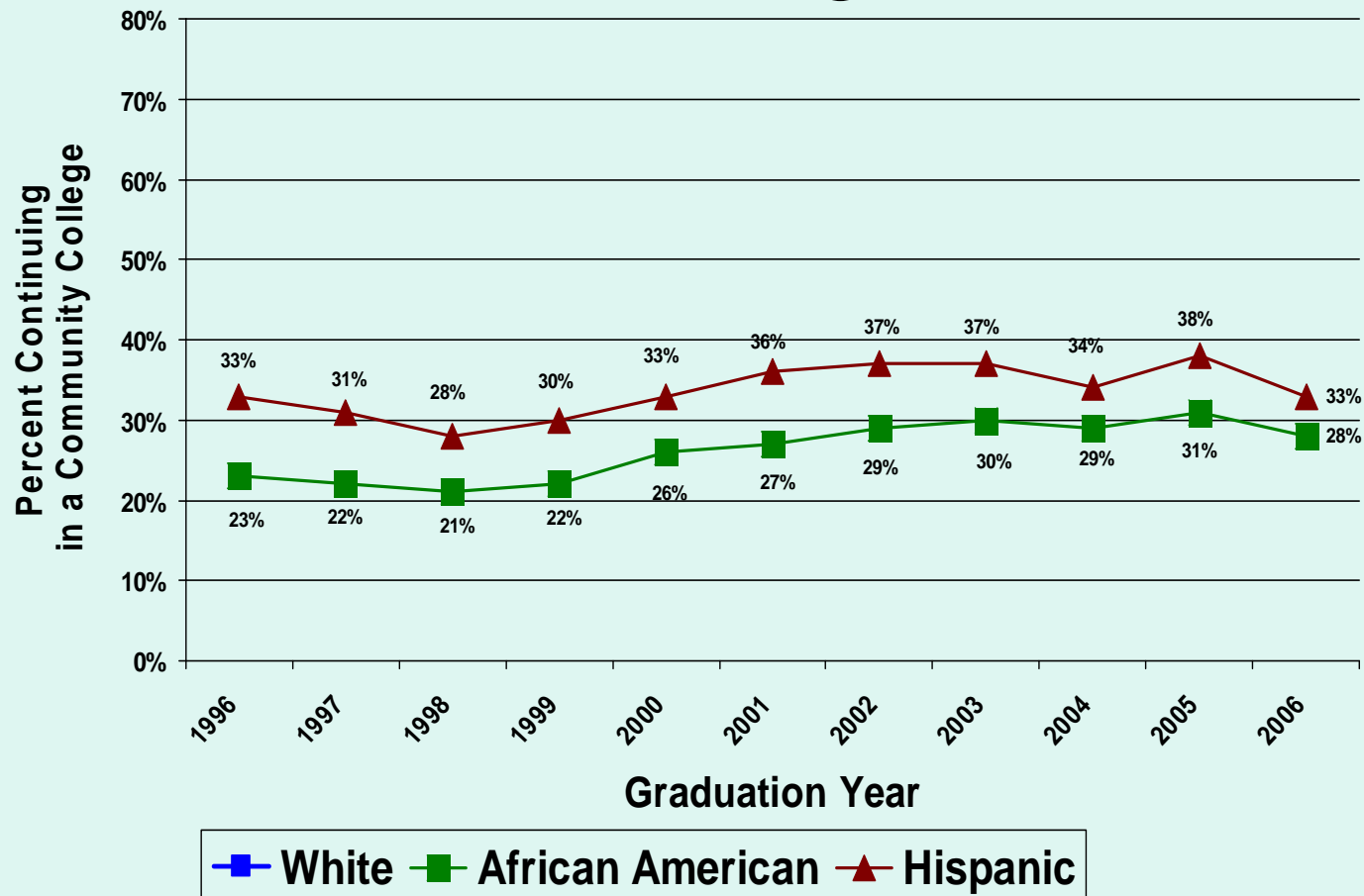
Community College Enrollment by Race/Ethnicity in the Fall Following Graduation



* Percentage of high school graduates who were enrolled in October after completing high school

Source: Florida Employment & Training Placement Information Program (FETPIP), Florida Department of Education.

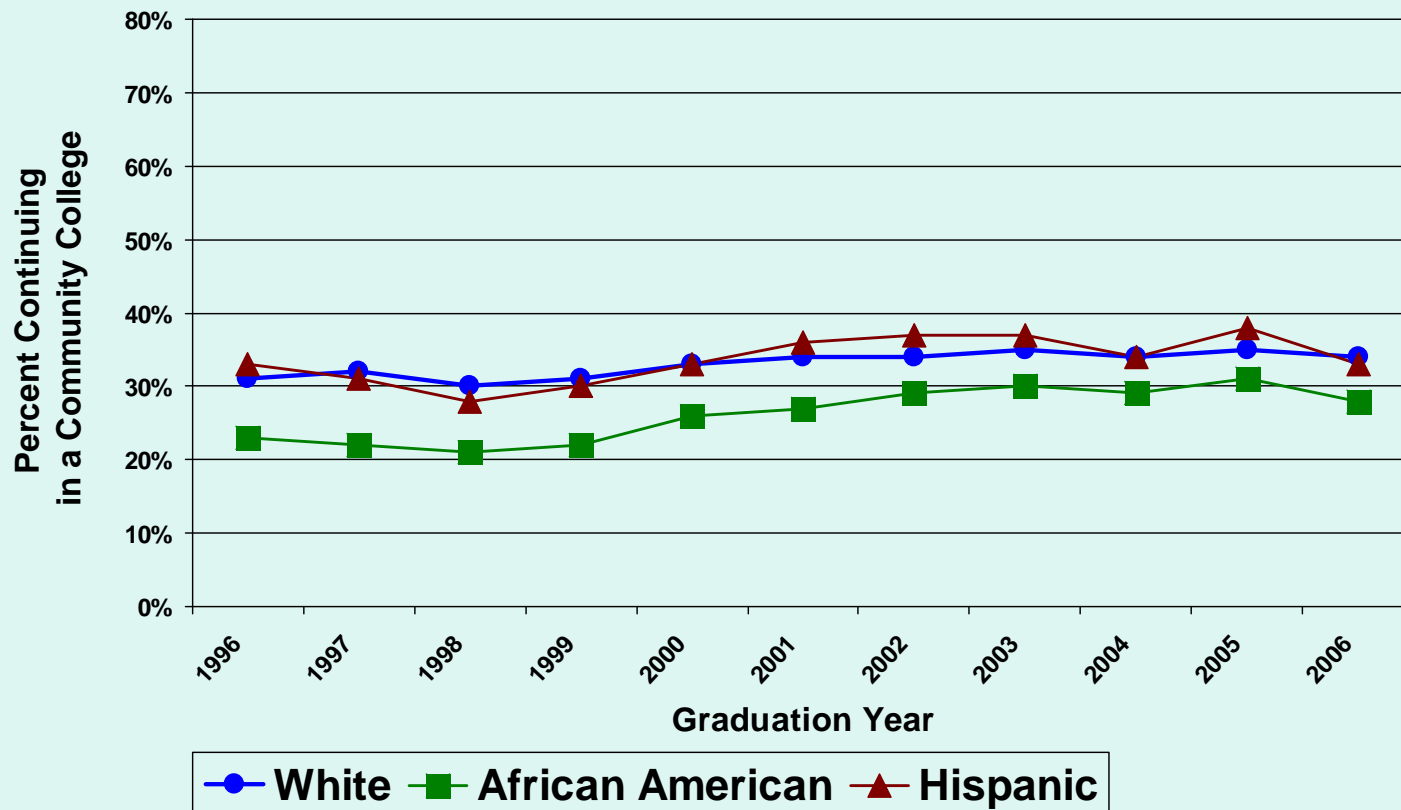
Community College Enrollment by Race/Ethnicity in the Fall Following Graduation



* Percentage of high school graduates who were enrolled in October after completing high school

Source: Florida Employment & Training Placement Information Program (FETPIP), Florida Department of Education.

Community College Enrollment by Race/Ethnicity in the Fall Following Graduation



* Percentage of high school graduates who were enrolled in October after completing high school

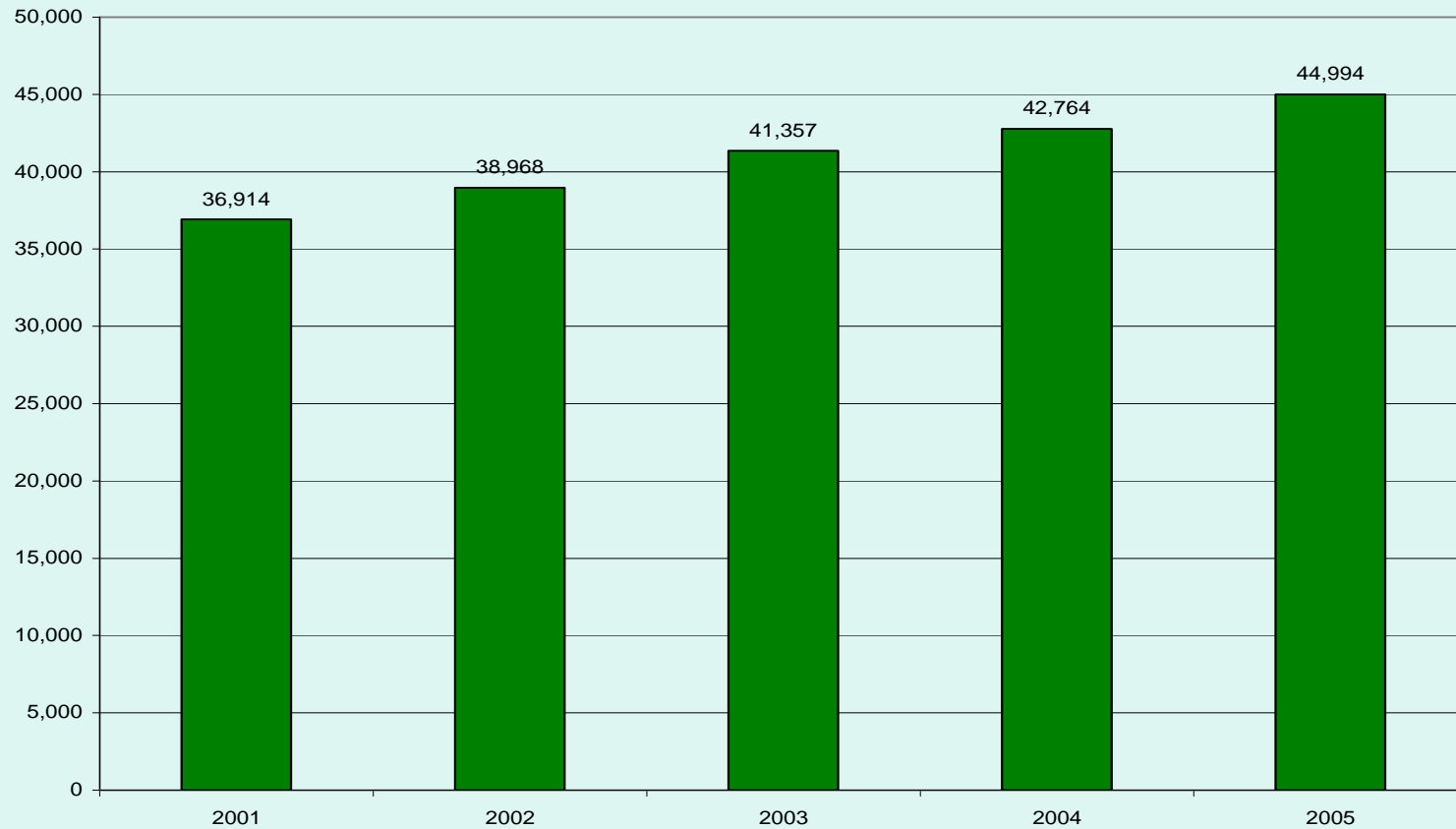
Source: Florida Employment & Training Placement Information Program (FETPIP), Florida Department of Education.

Postsecondary Enrollment in the Fall Following High School Graduation, 1996-2005

Grad Year	White	African American	Hispanic
1995-96	53%	41%	51%
1998-99	55%	42%	51%
2001-02	62%	48%	57%
2005-06	61%	48%	52%

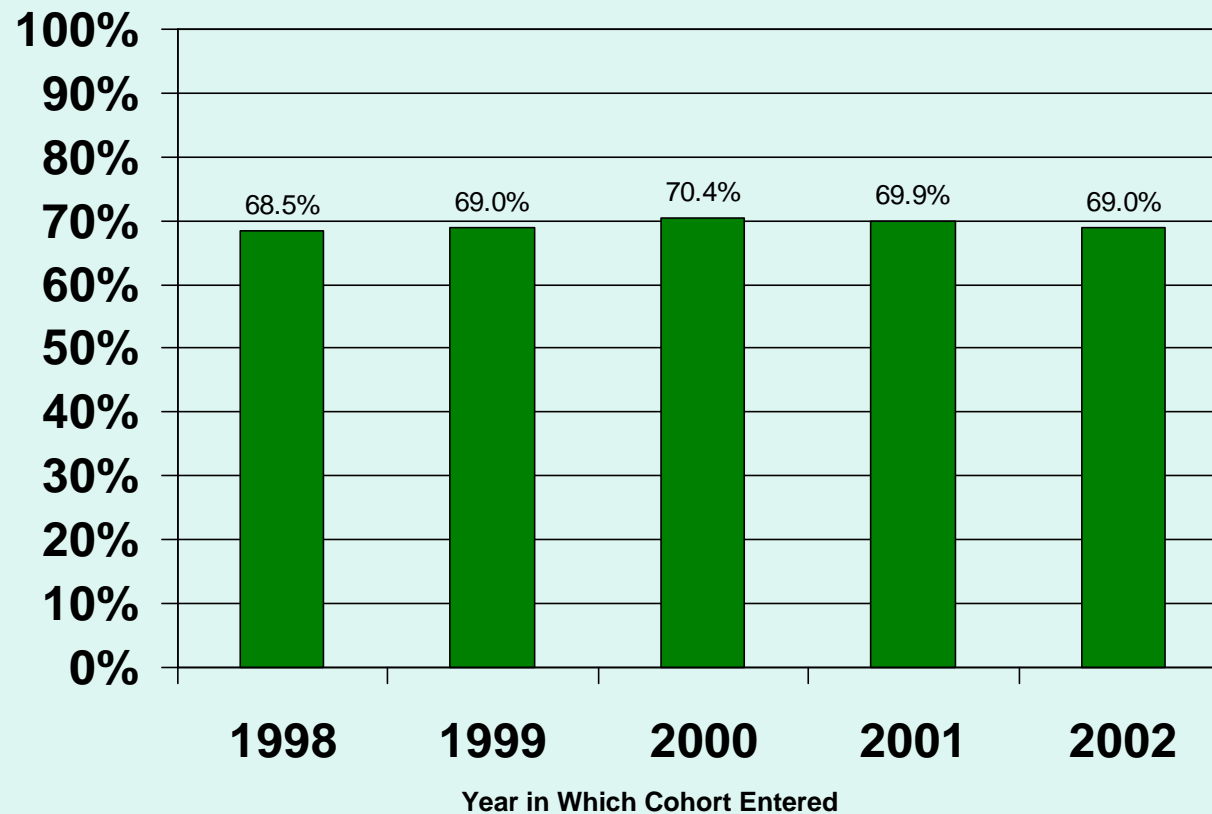
Source: Florida Employment & Training Placement Information Program (FETPIP),
Florida Department of Education.

AA/AS Degrees Awarded



Source: Florida Community Colleges, 2001-02 through 2005-06 Student Data Base

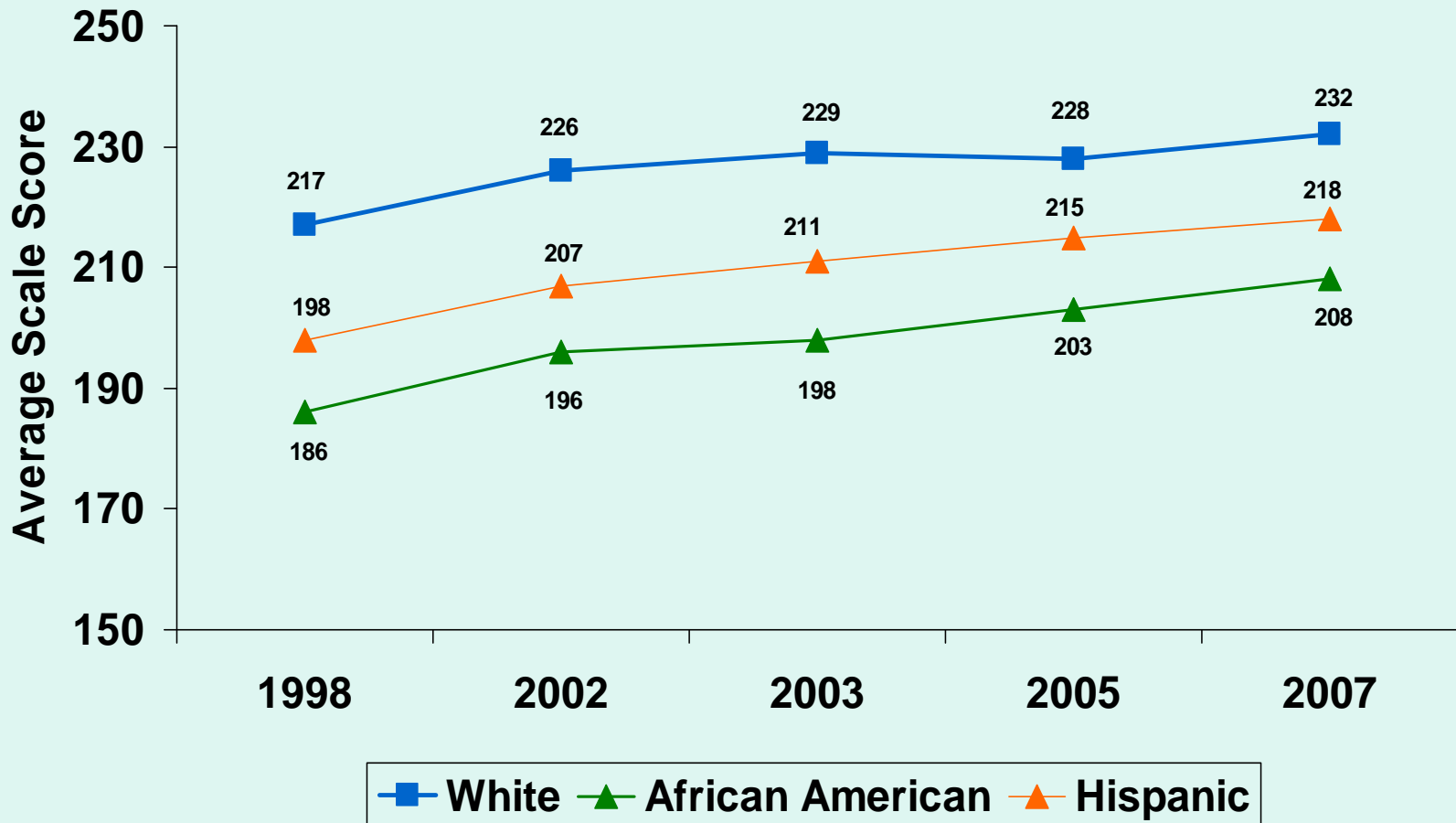
SUS 4-Year Graduation Rate for AA-Transfer Students



Source: Figure 5, Report on State University System of Florida Accountability Measures Referenced the General Appropriations Act Implementing Bill, December 31, 2006.

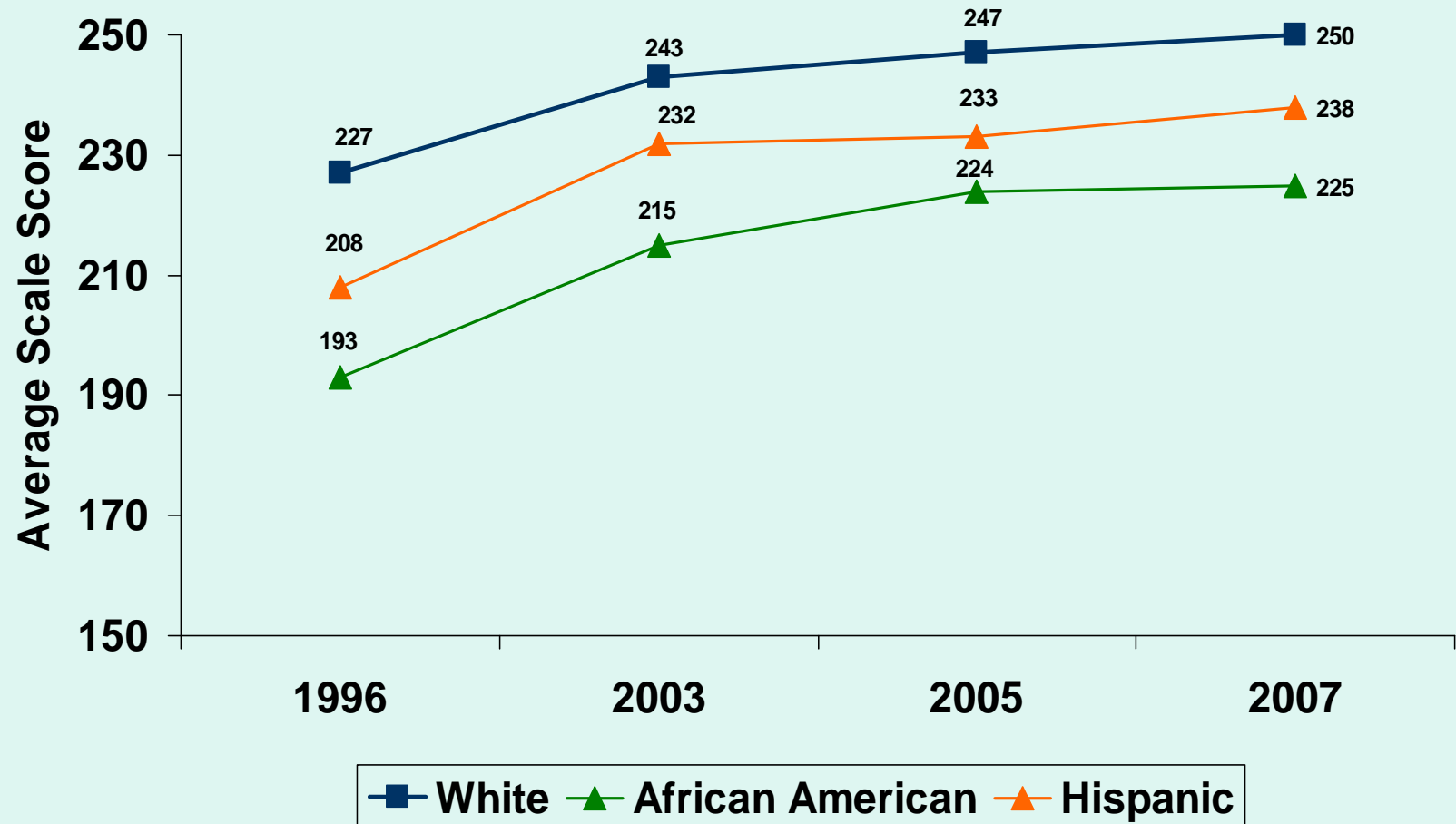
We're making some progress in
addressing these problems in the
public schools...

NAEP Reading, Grade 4: Florida Performance



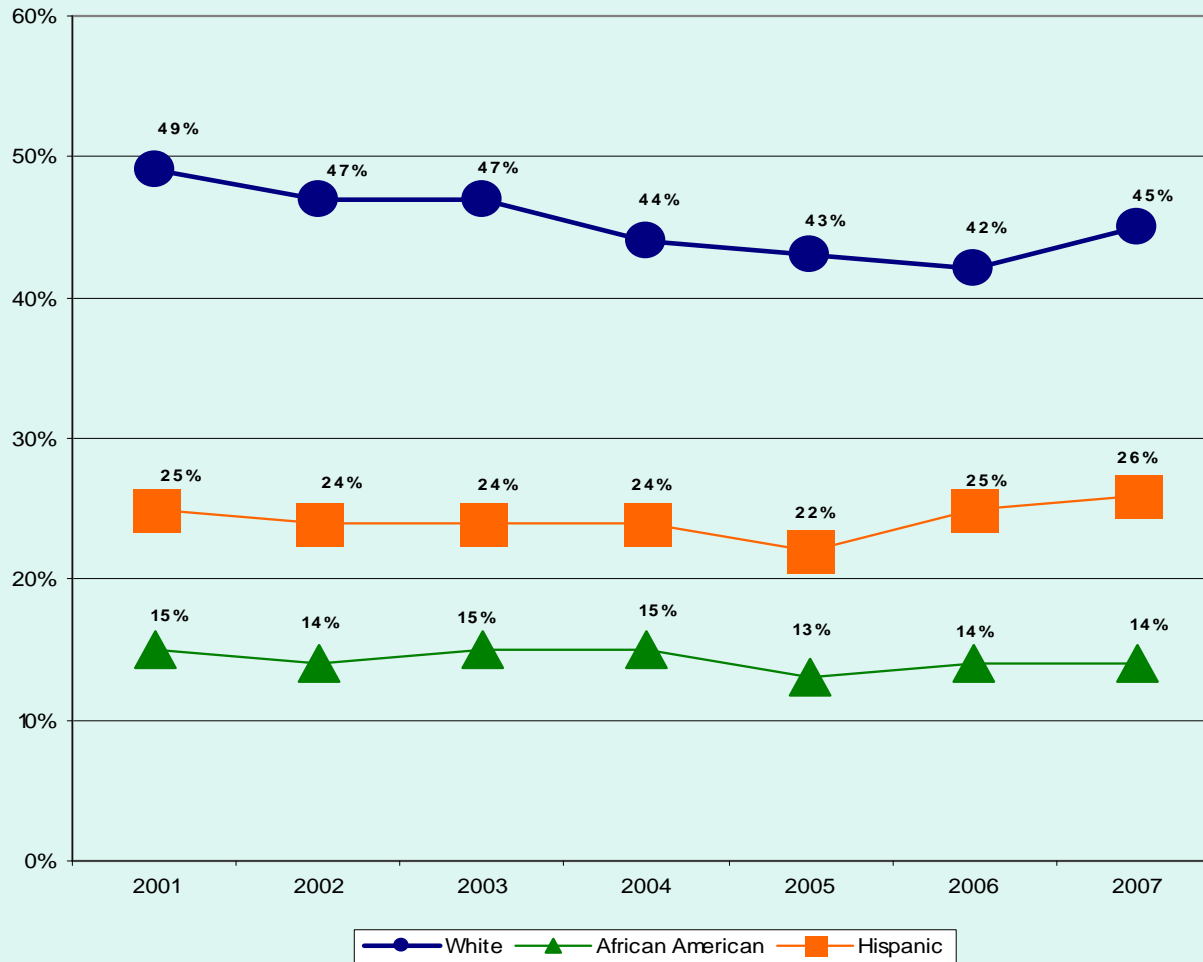
Source: National Center for Education Statistics

NAEP Math, Grade 4: Florida Performance

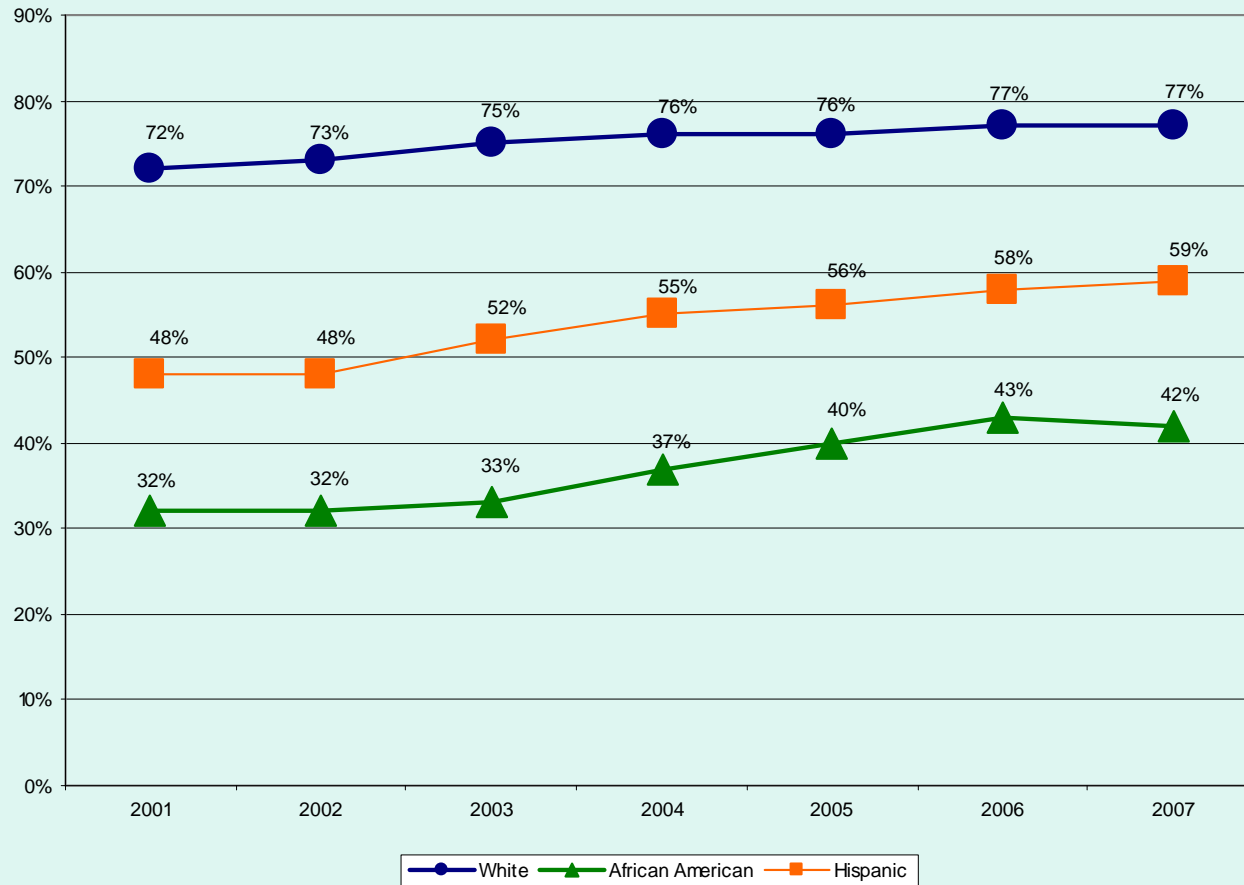


Source: National Center for Education Statistics

FCAT, Reading, 10th Grade Students Scoring 3 or Above by Race/Ethnicity

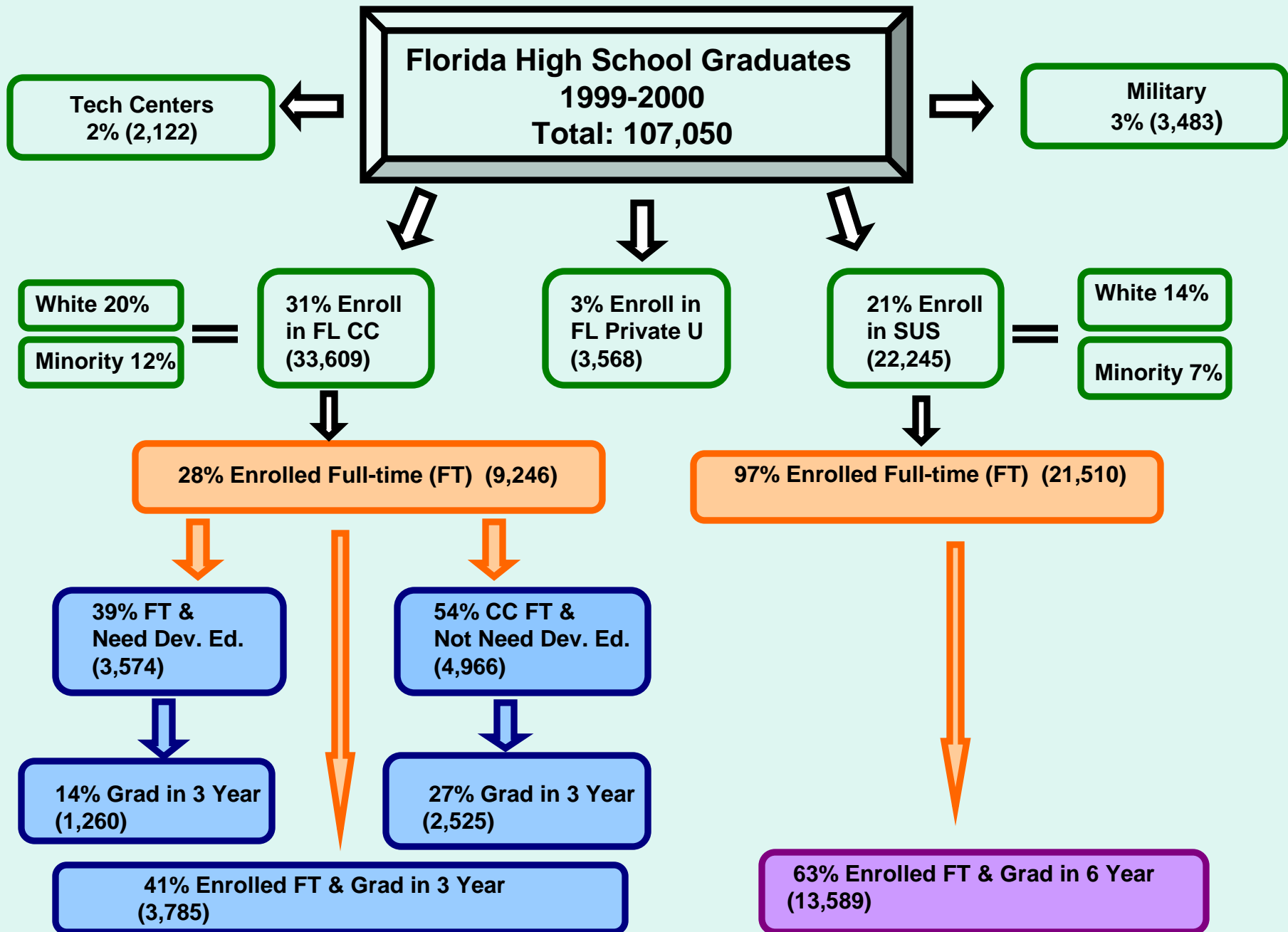


FCAT, Math, 10th Grade Students Scoring 3 or Above by Race/Ethnicity



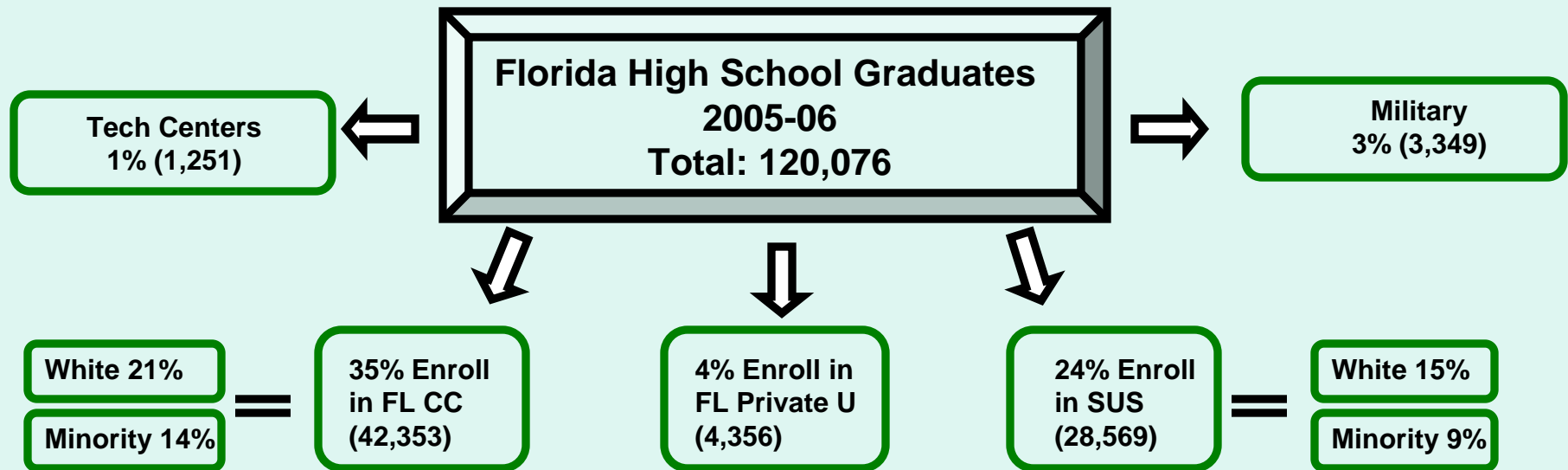
Florida High School Graduates 1999-2000

Do they continue their education?



Source: Florida Employment & Training Placement Information Program (FETPIP), Florida Department of Education; and the Florida Education Data Warehouse. Florida Department of Education.

The Next Cohort How Does It End?



Source: Florida Employment & Training Placement Information Program (FETPIP), Florida Department of Education; and the Florida Education Data Warehouse, Florida Department of Education.

Go Higher, Florida!

Draft Recommendations

1. Adopt definition (SBE and BOG)

- College readiness
- Workplace readiness

Go Higher, Florida!

Draft Recommendations

2. Require all high school students to take rigorous and relevant “core courses”

Go Higher, Florida!

Draft Recommendations

3. Develop and adopt high school and postsecondary assessments

- Clear in purpose
- Assess basic skills for graduation in core courses
- Assess postsecondary readiness in core courses
- Qualify for university admissions

Go Higher, Florida!

Draft Recommendations

4. Improve Public Awareness of assessments (current & future)

- Use as diagnostic tools
- As measures of learning gains from K through college