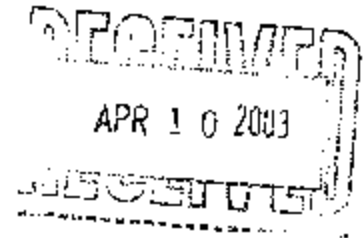


# SANTA FE COMMUNITY COLLEGE

Jackson N. Sasser  
President

April 8, 2003

Chancellor J. David Armstrong, Jr.  
Florida Department of Education  
Florida Community College System  
325 W. Gaines Street, Suite 1314  
Tallahassee, Florida 32399-0400



Dear David:

Please find enclosed two original requests for establishment of the Santa Fe Community College Special Purpose Center in Southwest Alachua County, Archer area and the SFCC Special Purpose Center in Southeast Bradford County, Lake Region area.

If I can be of further assistance, please let me know.

Sincerely,

Jackson N. Sasser  
President

JNS:tc

Enclosures

**REQUEST FOR ESTABLISHMENT  
OF A  
SANTA FE COMMUNITY COLLEGE  
SPECIAL PURPOSE CENTER  
IN THE SOUTHWEST  
ALACHUA COUNTY  
AREA**

*Proposal to the State Board of Community Colleges,  
the Postsecondary Education Planning Commission  
and the State Board of Education*

by

Saint Elmo Cherry-Clark, Ph.D.  
Coordinator of Special Projects

Santa Fe Community College  
Office for Development  
3000 N.W. 83<sup>rd</sup> Street, F-207  
Gainesville, Florida 32606  
December 20, 2002

## Table of Contents

Executive Summary .....	ii
<b>Requirement #1:</b> The proposed Special Purpose Center is a part of and consistent with the long-range master plan of the College .....	1
<b>Requirement #2:</b> The new instructional and support services are necessary to adequately serve the community college district .....	1
<b>Requirement #3:</b> Projected enrollments at the Special Purpose Center justify the need for this additional site.....	3
<b>Requirement #4:</b> Facilities at existing campuses are substantially complete and utilized.....	4
<b>Requirement #5:</b> The proposed expansion is in conjunction with the other educational agencies within the community college district and adjacent to the district.....	4
<b>Requirement #6:</b> Alternatives to the proposed expansion.....	5
<b>Exceptions to the Criteria</b> .....	5
References.....	6
Appendices.....	7
Appendix A: Santa Fe Community College Strategic Plan.....	8
Appendix B: Board of Trustees Approval .....	11
Appendix C: Letters of Support.....	13
Appendix D: Map of Adjacent Counties .....	31
Appendix E: Articulation Agreement (Alachua County) .....	33
Appendix F: Adjacent District Letters of Support.....	50
Appendix G: Santa Fe Community College Endowment Corporation Approval.....	55
Appendix H: Santa Fe Community College 40-year Lease for Andrews Center (An example of 40-year lease for new Center).....	60
Appendix I: Maps of Property .....	64

## Executive Summary

**Purpose:** The Santa Fe Community College (SFCC) Board of Trustees and administration, with the financial support of the Santa Fe Community College Endowment Corporation, will plan, develop, and construct a Special Purpose Educational Center on State Road (SR) 24 in southwest Alachua County to serve that part of western Alachua County centered around Archer/Newberry, Florida.

**Need:** The Southwest Alachua County Special Purpose Center has an educationally underserved target population of 102,179 within a twelve-mile radius of Archer. The growth in the area is projected to continue at its current rate of 15% over the next five-years. In addition to young high school dual admission students and graduates, the new Center will include a diverse population of rural and mostly low income Caucasian, Afro-Americans, and Hispanics. The problem in the area, the target population of the Center will include all age groups, including seniors and an estimated 55% female population, since in this part of Florida women have been traditionally educationally underserved and therefore unemployed.

**Objective:** To build a new Center that will take care of unmet educational needs of the local citizens and provide an adequate facility to meet the current demands of the College's instructional and community programs. This facility will serve to increase the opportunities for higher education to a lost, underserved, low-income population so they can achieve the education they need to be able to find better employment and partake in our society as productive citizens.

**Implementation:** For its diverse and educationally disadvantaged population, the Southwest Alachua County Special Purpose Center will provide counseling, financial aid and assistance, and registration for its day, evening and weekend classes. These will include a strong mix of general equivalency diploma (GED), college prep, freshman general education plus certain vocational courses, especially computer technology, business and health related classes. In addition, there will be special courses and training programs offered through the College's Adult and Community Education.

The Santa Fe Community College Endowment Corporation will give the College a 40-year lease (for \$1 a year) on 11 acres in Alachua County fronting on SR 24, in Archer, Florida. The Center will consist of over 10,000 square feet of space including eight general education classrooms, a community boardroom, and a community/common meeting room. The plan will provide for 90 paved parking spaces, a computer lab, and a developmental education lab. Both the land and the proposed structure have already been funded through the Santa Fe Community College Endowment Corporation.

The establishment of this Center will make it possible for the residents of the Archer/Newberry area to overcome the serious transportation problems created by the long distances to current higher educational facilities and their supporting services.

Criteria Specified To Establish a Special Purpose Center  
C240, 311(3)(J) State Statutes and  
STATE BOARD OF EDUCATION RULE (657-1.040)

**Requirement #1: The proposed Special Purpose Center is a part of and consistent with the long-range master plan of the College**

The proposed Special Purpose Center in the Southwest Alachua County is a part of and consistent with the long-range master plan of Santa Fe Community College's "Strategic Plan 2000." (See Appendix A) This recent update of the College's master plan renews the long-time commitment to "serve communities in Alachua and Bradford Counties through Educational Centers and specialized programs" and to "identify, assess, and meet community needs to promote open access to the College." This includes increasing learning options, including life-long learning consistent with quality education, the scheduling of classes and offering programs and support services such as registration, academic and financial counseling to meet the needs of students.

**Requirement #2: The new instructional and support services are necessary to adequately serve the community college district**

Santa Fe Community College (SFCC), established by the Florida Legislature in 1965, opened its main campus in northwest Gainesville in 1972, adjacent to Interstate I-75, where it has grown into a large and successful institution.

The College provides quality instruction and educational programs leading to Associate of Arts degrees (AA), Associate of Science degrees (AS), and/or Certificates of Training as a comprehensive public two-year institution. Currently 13,944 students are enrolled in credit courses in the College's educational and training programs. An additional 35,000 students are enrolled in non-credit courses from the Continuing Education and Community Education programs provided by the College in response to community and local business needs.

A strong commitment has been made through the years by the SFCC Board of Trustees and administration to serve even better its two-county district, supported by the vision of the Office for Development and the financial support of the SFCC Endowment Corporation.

The historic Bradford County Courthouse in Starke was renovated and established as the SFCC Andrews Center in 1985, becoming a Special Purpose Center in 1993, providing educational opportunities to Starke and the surrounding isolated and rural area of Bradford County. In 1990, the Charles L. Blount Center opened in downtown Gainesville to provide new and better educational access to workers in the center of town and especially the citizens of the nearby Afro-American community. It was designated a College Center in 1993. Both of these centers were funded by the Santa Fe Community College Endowment Corporation.

Now the time has come to address the needs of another underserved location in western Alachua County. This underserved location is known as the Archer/Newberry area. The Santa Fe Community College (SFCC) Board of Trustees has approved the establishment of the Southwest Alachua County Special Purpose Center fronting on State Road 24 (SR 24). (See Appendix B)

As reported by representatives of the City of Archer, the population within the city limits of Archer is estimated at 1,329 individuals. Mr. Steve Dopp, at the North Florida Regional Planning Council, provided a population estimate at 102,179 within a 12-mile radius of the City of Archer. Within a 10-mile radius of Archer the population is estimated at 49,202.

In 1990, the population was estimated at an approximation of 72,523. Over a period of 10 years, there was a gradual population increase centered around the small rural town of Archer to approximately 102,179, as documented by the North Florida Regional Planning Council representative.

Clearly there is a need to serve this underserved population so that they can get the education they need to be able to find better employment and participate in our society as productive citizens. Santa Fe Community College has a partnership agreement with the School Board of Alachua County, which could provide GED classes at the Southwest Alachua County Special Purpose Center to adult high school students. Ten percent (10%) of the seats taken at the main Northwest Campus are college prep courses, 18% at the Charles L. Blount Center and 33% at the Andrews Center are also college prep classes. This new Santa Fe Community College Special Purpose Center would also have a population requiring a strong offering of college prep courses.

Given the fact that the new proposed center is designed to serve southwest Alachua County, specifically, in the Archer/Newberry area, outside of the public schools, no postsecondary educational opportunities and training within a twelve-mile radius are available to the citizens who reside in this area. It is anticipated that, given the demographics and the population of the target service area, the new center will require 40% of its student population be enrolled in college prep classes.

In addition to these remedial efforts, freshman general education classes plus certain vocational courses, especially computer technology business and health-related courses would make up the core offerings of the Southwest Alachua County Special Purpose Center. These latter classes would especially benefit the graduates of Newberry, Bronson and Williston High Schools who require more college prep classes, according to the *SFCC Office of Institutional Research and Planning, Fact Book, 2001-2002*.

In addition to increased access to postsecondary education and additional educational support services, the new center will provide:

- 1) increased training opportunities for employees of city and county governments;
- 2) increase the opportunity for secondary students and instructors to interface with college instructors to foster more collaboration;
- 3) increase the opportunity for all ages to participate in post-secondary education;

- 4) increase access to computer technology and the Internet;
- 5) increase opportunities for dual enrollment.

If students are unable to attend one of the current distance Centers or the Northwest campus, they cannot participate adequately in higher education and are therefore less likely to obtain satisfactory employment opportunities. Without such participation, it is clear that Santa Fe Community College will be unable to fulfill its mission of serving adequately the residents of its district. Increasing educational services to the residents of the area would more likely be fulfilled with the new and expanded instruction and support services that can be best accomplished by the establishment of this new Special Purpose Center.

**Requirement #3: Projected enrollments at the Special Purpose Center justify the need for this additional site**

The population centered in and around Archer/Newberry area and the distance from the Northwest Campus indicate that projected enrollments will be adequate to justify the new Southwest Alachua County Special Purpose Center. It is estimated that the enrollment in one year will be approximately 750 students. This is especially clear when taking into account the graduates of nearby Newberry, Bronson and Williston High Schools. The majority of Newberry, Williston and Bronson High School graduates will attend the new Center. **Appendix C (Letters of Support)**

Actual and projected enrollments at the Northwest Campus and the current Centers are listed below:

**FTE by site:**

	<u>Andrews</u>	<u>Charles L. Blount</u>	<u>Northwest Campus</u>
1998-99	154.6	332.5	6637.9
1999-00	157	365.1	6758.7
2000-01	150.9	360.5	6620.4
2001-02	160.7	411.9	6918.5
2002-03	162.4	416.2	6991.5
2003-04	166.1	425.8	7151.9
2004-05	170	435.8	7320.3
2005-06	174	445.9	7489.9
2006-07	177.8	455.8	7656.2

Source: SFCC Office of Institutional Research, 2002

Please note that the projected enrollment information provided above is on the College's three existing campuses. The main campus, which is located in Gainesville, Florida, the Charles L. Blount Center, centrally located in downtown Gainesville, and the Andrews Center in Starke, Florida. The new proposed center will be located in the southwest section of Alachua County in Archer, Florida. No other outreach centers have been established that provide postsecondary education access to the local citizenry residing in this area of western Alachua County. From the adjacent counties inclusive of the other college districts of Lake City Community College and

Central Florida Community College the total enrollment at Santa Fe Community College (SFCC) of out-of-district students is approximately 1,110 as of fall semester 2002. From Levy County alone 357 students are currently enrolled at Santa Fe Community College (**See Appendix D**). With a SFCC educational center located in Archer, Florida, it is believed that more individuals will take advantage of an educational opportunity because of a postsecondary institution situated in proximity of their homes. This new proposed educational center would serve to meet the unmet education needs by providing easy and closer educational access to an underserved low-income population.

**Requirement #4: Facilities at existing campuses are substantially complete and utilized**

The main campus is essentially complete with the recent construction of the new Library and the new Student Services Building.

The Charles L. Blount Center began operations in the beautifully renovated former Gainesville Train Depot in the Summer of 1990. Additional office and classroom space were obtained by the renovation of the former Gainesville Gas Company.

The Andrews Center opened in the renovated historic Bradford County Courthouse in 1985. It has since opened additional classrooms and an auditorium in the renovated century-old Jones-Rosenberg Building. Additional classroom space has been obtained in the new Lillian Stump Educational Building at the site of the old Bradford County Jail.

**Requirement #5: The proposed expansion is in conjunction with the other educational agencies within the community college district and adjacent to the district**

Santa Fe Community College (SFCC) has a long history of partnership and cooperation with the Alachua County School Board and its institutions. The College offered classes in Alachua County Schools from its inception and established offices in the old Buchholz High School and in the Lincoln High School building in 1967. Santa Fe Community College and the School Board of Alachua County have an Interinstitutional Articulation Agreement, which includes Technology and Applied Science Dual Enrollment, Academic Dual Enrollment, Fine Arts Dual Enrollment, Early Admissions, Tech-Prep/School-To-Work, Remediation Reduction, and Teacher Preparedness. This agreement has been reviewed by each of the SFCC programs involved and has been updated and modified according to specific requests made by representatives of the Alachua County School Board. The Southwest Alachua County Special Purpose Center site could provide space for GED courses, as well as community and adult education classes to serve the Archer/Newberry area.

Santa Fe Community College has an Articulation Agreement with the School Board of Alachua County. These include tutoring programs, computer skill training, library programs, basic skills programs and a nationally acclaimed community education and adult education programs. (**Appendix E**)

Strong support for the new Center to serve the Archer/Newberry area has come from the adjacent service districts, including the President of Central Florida Community College, Levy County Superintendent of Schools, and the Principals of Williston and Bronson High Schools. (**Appendix F**)

**Requirement #6: Alternatives to the proposed expansion**

The members of the Board of Directors of the Santa Fe Community College's (SFCC) Endowment Corporation informed the Vice President for Development about the population growth they had observed in the southwest part of Alachua County area. After several years of study of the growth in the area and the lack of higher educational opportunities and services for residents of these underserved sections of Alachua County, the Santa Fe Community College Endowment Corporation has recommended and approved expanding the College by establishing a Special Purpose Center in Archer. (Appendix G) The area has a critical need for both higher education and better economic opportunities.

Since there are no adequate vacant facilities in the area, the SFCC Endowment Corporation is preparing for the College a 40-year lease on 11 acres with frontage on State Road 24 in Archer, Florida. This lease will be similar to the lease agreement that Santa Fe Community College Endowment Corporation entered into in October 1993. (Appendix H) The Southwest Alachua County Special Purpose Center, a project of the Santa Fe Community College Endowment Corporation, will consist of over 10,000 square feet of space including eight general classrooms, a community boardroom, and a community/common meeting room. This plan will provide for the establishment of a computer lab, a developmental education lab, as well as space for community and continuing education classes. Both the land and the proposed structure have already been funded through the Santa Fe Community College Endowment Corporation. (See Appendix I.)

**EXCEPTIONS TO THE CRITERIA:**

1) The population to be served:

This facility will allow the underserved student and adult population in the Archer/Newberry area to receive more readily the much needed introductory and freshman level classes. The lack of nearby facilities, financial assistance and other educational support services such as counseling, admission, testing, financial aid and registration will be resolved for the almost 102,000 citizens within a twelve-mile radius of Archer, improving greatly their educational and economic opportunities.

2) Transportation problems:

This Special Purpose Center will solve transportation problems for residents of the Archer/Newberry area, making higher education accessible to many for the first time. The SFCC Northwest Campus is 21 miles from the proposed Special Purpose Center.

The Southwest Alachua County Special Purpose Center will provide the citizens of the Archer/Newberry area easy access to higher education with day, evening, and weekend classes currently available to other residents of the State, making real the ideals of the Community College System to be "responsive to local needs and challenges." (Fla. Statute Section 240.301.)

**REFERENCES**

1. *FACT Book 2001-2002*, Institutional Research, Santa Fe Community College
2. *Florida Statutes* Section 240.301
3. *Florida Statistical Abstract*, 2000
4. School Board of Alachua County, 2002
5. School Board of Levy County, 2002
6. The North Florida Regional Planning Council,  
Gainesville, Florida, 2002
7. U.S. Census Bureau, 1990
8. U.S. Census Bureau, *American Fact Finder*, 2000

**APPENDICES**

Appendix A Santa Fe Community College Strategic Plan

Appendix B Board of Trustees Approval

Appendix C Letters of Support

Appendix D Map of Adjacent Counties

Appendix E Articulation Agreement (Alachua County)

Appendix F Adjacent District Letters of Support

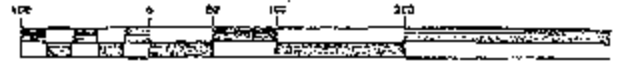
Appendix G Santa Fe Community College Endowment Corporation Approval

Appendix H Santa Fe Community College 40-year Lease for Andrews Center  
(An example of 40-year lease for new Center)

Appendix I Maps of Property

Santa Fe Community College  
Southwest Special Purpose Center

GRAPHIC SCALE



( IN FEET )  
1 inch = 100 ft

**P.O.C.**  
NE CORNER OF THE  
SW 1/4 OF THE NE  
1/4 OF SECTION 17,  
TOWNSHIP 33 S,  
RANGE 16 E, ALACHUA  
COUNTY

**P.O.B.**

SW 1/4 OF THE NE 1/4 OF SECTION 17

BEARING BASIS  
1°46'21" W 1319.54'(M)

587°35'09" W

FENCE IS 0.1' S OF  
SET REBAR & CAP

**SUBJECT PARCEL**  
NO 175'26" W 108.91'(M)  
501°15'26" E 98.63'(M)  
N 86°46'21" E 500.00'(M)

FENCE CORNER IS 3.5' S OF SET FROM REBAR & CAP

FENCE CORNER IS 0.3' S OF SET FROM REBAR & CAP

FUTURE SANTA FE COMMUNITY COLLEGE SITE  
8.960 ACRES ±  
OR 425,164 S.F. ±  
(PORTION OF PARCEL 3  
OR 2993, PG 1710)

TAX PARCEL # 3045  
CRS. 2033, PG 39

NW CORNER OF THE  
SW 1/4 OF THE SE  
1/4 OF THE NE 1/4  
OF SECTION 17

NORTH LINE OF THE  
SW 1/4 OF THE SE  
1/4 OF THE NE 1/4  
OF SECTION 17

N 86°45'37" E  
109.3340

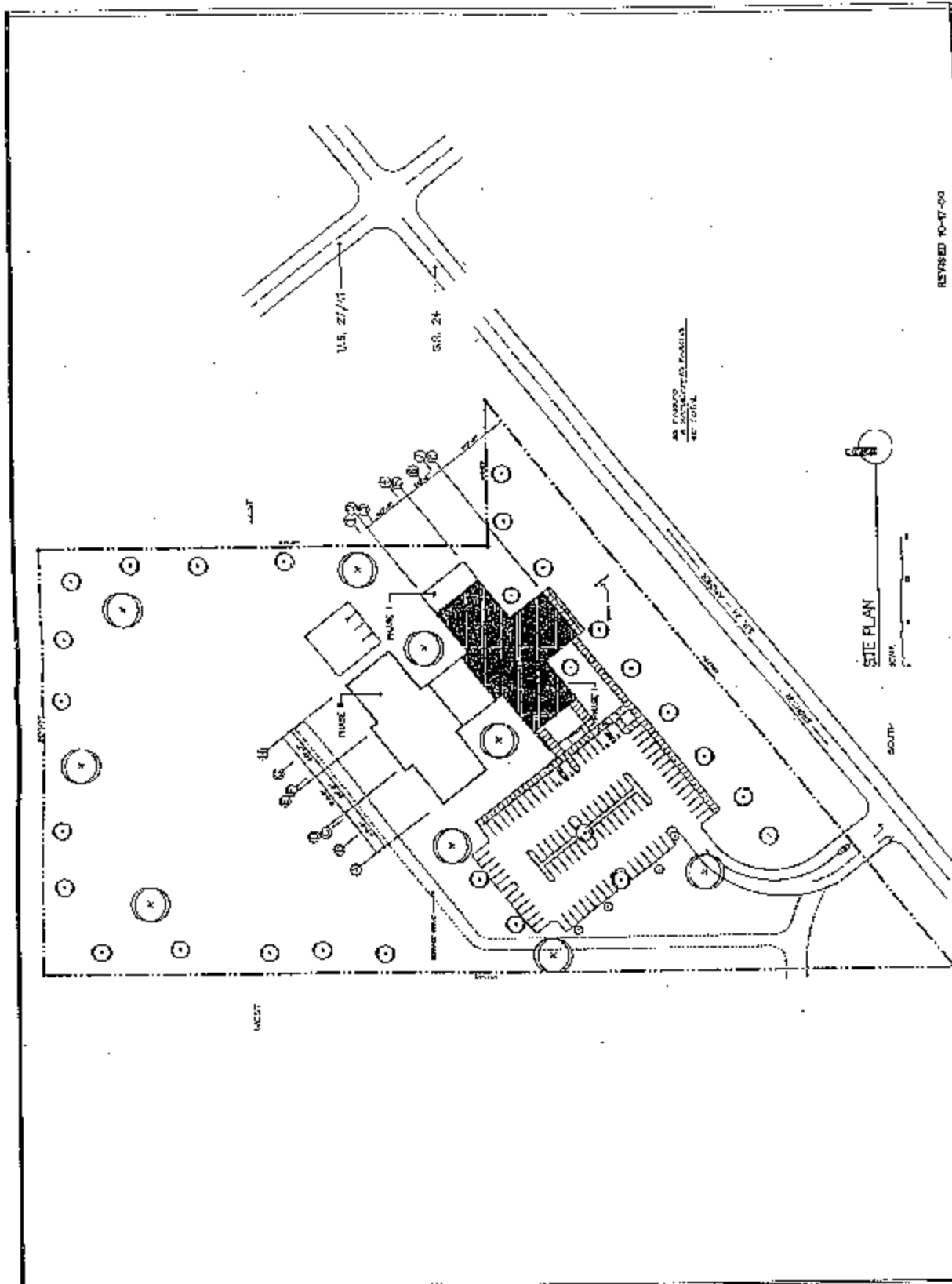
FENCE CORNER IS 2.4' S OF SET FROM REBAR & CAP

FENCE CORNER IS 0.6' S OF SET FROM REBAR & CAP

STATE ROAD NO. 24  
AKA ARCHER ROAD

FENCE CORNER IS 0.7' FROM REBAR & CAP

Santa Fe Community College  
 Southwest Special Purpose Center



REVISED 10-17-00  
 S.F.C. 24  
 ARCHER, FLORIDA  
**SFCC ARCHER CENTER - 2000**

**frank m. walrath, architect, a.i.a.**

p.o. box 77  
 keystone heights, fl. 32656  
 256 barriguo street

352-473-4042

**REQUEST FOR ESTABLISHMENT  
OF A  
SANTA FE COMMUNITY COLLEGE  
SPECIAL PURPOSE CENTER  
IN THE SOUTHEAST BRADFORD COUNTY  
LAKE REGION AREA**

*Proposal to the State Board of Community Colleges,  
the Postsecondary Education Planning Commission  
and the State Board of Education*

by

Bernard J. McFadden, Litt.D.  
Consultant

Santa Fe Community College  
Office for Development  
3000 N.W. 83<sup>rd</sup> Street, F-207  
Gainesville, Florida 32606  
July 31, 2002

## Table of Contents

Excutive Summary .....	ii
<b>Requirement #1:</b> The proposed Special Purpose Center is a part of and consistent with the long-range master plan of the College .....	1
<b>Requirement #2:</b> The new instructional and support services are necessary to adequately serve the community college district .....	1
<b>Requirement #3:</b> Projected enrollments at the Special Purpose Center justify the need for this additional site.....	3
<b>Requirement #4:</b> Facilities at existing campuses are substantially complete and utilized.....	4
<b>Requirement #5:</b> The proposed expansion is in conjunction with the other educational agencies within the community college district and adjacent to the district.....	4
<b>Requirement #6:</b> Alternatives to the proposed expansion.....	5
<b>Exceptions to the Criteria .....</b>	<b>5</b>
Appendices.....	7
Appendix A: Santa Fe Community College Strategic Plan.....	8
Appendix B: Board of Trustees Approval .....	11
Appendix C: Letters of Support.....	13
Appendix D: Articulation Agreement (Bradford County and Library).....	21
Appendix E: Articulation Agreement (Alachua County) .....	37
Appendix F: Adjacent District Letters of Support.....	54
Appendix G: Santa Fe Community College Endowment Corporation Approval.....	58
Appendix H: Santa Fe Community College 40-year Lease for Andrews Center (An example of 40-year lease for new Center).....	62
Appendix I .....	66

## Executive Summary

**Purpose:** The Santa Fe Community College (SFCC) Board of Trustees and administration, with the financial support of the Santa Fe Community College Endowment Corporation, will plan, develop, and construct a Special Purpose Educational Center on State Road (SR) 21 in southeast Bradford County to serve that part of Bradford and eastern Alachua Counties known as the Lake Region Area, centered around Melrose and Keystone Heights, Florida.

**Need:** The Southeast Bradford County Special Purpose Center has an educationally underserved target population of 30,000 within a ten mile radius of Melrose. The growth in the area is projected to continue at its current rate of 15% over the next five-years. In addition to young high school dual admission students and graduates, the new Center will include a diverse population of rural and mostly low income Caucasian, Afro-Americans, and Hispanics. Due to a severe high school dropout problem in the area, the target population of the Center will include all age groups, including seniors and an estimated 65% female population, since in this part of Florida women have been traditionally educationally underserved and therefore unemployed. The Center will also be a vehicle for training of city and county employees, as well as large employers such as Clay Electric Cooperative.

**Objective:** To build a new Center that will take care of unmet educational needs of the local citizens and provide an adequate facility to meet the current demands of the College's instructional and community programs. This facility will serve to increase the opportunities for higher education to a lost, underserved, low-income population so they can achieve the education they need to be able to find better employment and partake in our society as productive citizens.

**Implementation:** For its diverse and educationally disadvantaged population, the Southeast Bradford County Special Purpose Center will provide counseling, financial aid and assistance, and registration for its day, evening and weekend classes. These will include a strong mix of general equivalency diploma (GED), college prep, freshman general education plus certain vocational courses, especially computer technology, business and health related classes. In addition, there will be special courses and training programs offered through the College's Adult and Community Education.

The SFCC Endowment Corporation will give the College a 40-year lease (for \$1 a year) on 15 acres in Bradford County fronting on SR 21 four miles north of Melrose and one mile south of Keystone Heights. The Center will consist of over 10,000 square feet of space including eight general education classrooms, a community boardroom, and a community/common meeting room. The plan will provide for 90 paved parking spaces, a computer lab, and a developmental education lab. Both the land and the proposed structure have already been funded through the Santa Fe Community College Endowment Corporation.

The establishment of this Center will make it possible for the residents of the Lake Region Area to overcome the serious transportation problems created by the long distances to current higher educational facilities and their supporting services.

Criteria Specified To Establish a Special Purpose Center  
C240, 311(3)(J) State Statutes and  
STATE BOARD OF EDUCATION RULE (657-1.040)

**Requirement #1: The proposed Special Purpose Center is a part of and consistent with the long-range master plan of the College**

This proposal of a Special Purpose Center in the Southeast Bradford County Lake Area Region is a part of and consistent with the long-range master plan of Santa Fe Community College's "Strategic Plan 2000." (Appendix A) This recent update of the College's master plan renews the long-time commitment to "serve communities in Alachua and Bradford Counties through Educational Centers and specialized programs" and to "identify, assess, and meet community needs to promote open access to the college." This includes increasing learning options, including life-long learning consistent with quality education, the scheduling of classes and offering programs and support services such as registration, academic and financial counseling to meet the needs of students.

**Requirement #2: The new instructional and support services are necessary to adequately serve the community college district**

Santa Fe Community College (SFCC), established by the Florida Legislature in 1965, opened its main campus in northwest Gainesville in 1972, adjacent to Interstate I-75, where it has grown into a large and successful institution.

The College provides quality instruction and educational programs leading to Associate of Arts degrees (AA), Associate of Science degrees (AS), and/or Certificates of Training as a comprehensive public two-year institution. Currently 13,944 students are enrolled in credit courses in the College's educational and training programs. An additional 35,000 students are enrolled in non-credit courses from the Continuing Education and Community Education programs provided by the College in response to community and local business needs.

A strong commitment has been made through the years by the SFCC Board of Trustees and administration to serve even better its two-county district, supported by the vision of the Office for Development and the financial support of the SFCC Endowment Corporation.

The historic Bradford County Courthouse in Starke was renovated and established as the SFCC Andrews Center in 1985, becoming a Special Purpose Center in 1993, providing educational opportunities to Starke and the surrounding isolated and rural area of Bradford County. In 1990, the Charles L. Blount Center opened in downtown Gainesville to provide new and better educational access to workers in the center of town and especially the citizens of the nearby Afro-American community. It was designated a College Center in 1993. Both of these centers were funded by the Santa Fe Community College Endowment Corporation.

Now the time has come to address the needs of another underserved location in eastern Alachua County and southeast Bradford County. This underserved location is known as the Lake Region Area centered in Melrose, including Hawthorne to the south and Keystone Heights to the

north. The Santa Fe Community College (SFCC) Board of Trustees has approved the establishment of the Southeast Bradford County Lake Region Area Special Purpose Center fronting on State Road 21 (SR 21). (Appendix B)

According to *Florida Monthly Magazine* (January 2000), an estimated number of 18,000 persons live within a five-mile radius of Melrose, and the *North Florida Regional Planning Council* reports that 29,025 individuals live within a ten-mile radius. Melrose centers in an area of four counties (Alachua, Bradford, Putnam and Clay) comprising 2,490 square miles with an average of 179 persons per square mile. By definition, a population of less than 1,000 persons per square mile is rural, according to *Florida Statistical Abstract*, 2000.

The population of Alachua and Bradford Counties is expected to continue to increase in the coming years. The 1990 Census reported 181,596 individuals in Alachua County while the *Census Bureau 2000* recorded 217,955, a 17% increase, while Bradford grew from 22,215 to 26,088, a 13% increase.

Potential students in this underserved rural area would have a great need for GED classes. In the 1997-98 school year there were 446 students in the ninth grade in Bradford County. By 2000-2001 only 239 seniors were in the twelfth grade, a loss of 207 students (46%). Keystone Heights High School had 220 ninth graders in 1997-98, but only 111 twelfth graders in 2000-2001 a loss of 109 students (50%). A similar attrition rate occurred at Interlachen High School attended by many students in the Melrose area. While there were 326 ninth graders in 1997-98, only 129 remained in the twelfth grade in 2001-2002, a huge loss of 197 students (60%), as documented by *Bradford, Clay, and Putnam County's School Boards*, 2002, respectively.

In the three high schools that serve the Lake Region Area, this made a total of 996 ninth graders in 1997-98, but four years later the senior classes in these schools totaled only 479, a drop-out loss of 517 (52%).

Clearly there is a need to serve this lost population so that they can get the education they need to be able to find better employment and partake in our society as productive citizens. Santa Fe Community College has a partnership agreement with the Bradford County School system which could provide GED classes at the Southeast Bradford County Special Purpose Center through the services of the Bradford-Union Vocational-Technical Center. It would follow that, as has been true at the Andrews Center in Starke and Charles L. Blount Center in downtown Gainesville, this new SFCC Special Purpose Center would also have a population requiring a strong offering of college prep classes. While 10% of the seats taken at the main Northwest Campus are college prep, 18% of the Charles L. Blount Downtown Center and 33% of the Andrews Center are college prep classes. It is anticipated that, given the demographics and the population of the service area, the new center will require that 35% of its student population be enrolled in college prep classes.

In addition to these remedial efforts, freshman general education classes plus certain vocational courses, especially computer technology, business and health-related courses would make up the core offerings of the Southeast Bradford County Special Purpose Center. These latter classes would especially benefit the graduates of Keystone Heights High School who require fewer college prep classes, according to the *SFCC Office of Institutional Research and Planning, Fact*

*Book, 2001-2002.* The experience of the College at the Andrews Center and the Charles L. Blount Center shows that the opening of nearby Centers bring back large numbers of adults 5, 10, 20 and more years out of high school, most of whom thought they would never have a chance to go to college. For example, for the Fall Semester of 2001-2002, 181 students with Keystone and Melrose zip codes were in the age group of 15-24 attending Santa Fe Community College (SFCC), while 113 were over 24 years of age, according to the SFCC Office of Institutional Research.

In addition to increased access to postsecondary education and additional educational support services, the new center will provide:

- 1) increased training opportunities for employees of city and county governments;
- 2) increase the opportunity for secondary students and instructors to interface with college instructors to foster more collaboration;
- 3) increase the opportunity for all ages to participate in post-secondary education;
- 4) increase access to computer technology and the Internet;
- 5) increase opportunities for dual enrollment.

If students are unable to attend one of the current distance Centers or the Northwest campus, they cannot participate adequately in higher education and are therefore less likely to obtain satisfactory employment opportunities. Without such participation, it is clear that Santa Fe Community College will be unable to fulfill its mission of serving adequately the residents of its district. The potential to serve better the residents of the area is more likely to be fulfilled with the new and expanded instruction and support services that can be best accomplished by the establishment of this Special Purpose Center.

**Requirement #3: Projected enrollments at the Special Purpose Center justify the need for this additional site**

The population centered in and around Melrose and the distance of the area from current Centers and the Northwest Campus indicate that projected enrollments will be adequate to justify the new Southeast Bradford County Special Purpose Center. It is estimated that the enrollment in five years should be approximately 750 students. This is especially clear when taking into account the graduates of nearby (less than one mile) Keystone Heights High School. The majority of Keystone Heights High School graduates will attend the new Center since St. Johns River Community College's nearest campus is 27 miles away. **Appendix C (Letters of Support)**

Actual and projected enrollments at the Northwest Campus and the current Center are listed below:

**FTE by site:**

	<u>Andrews</u>	<u>Blount</u>	<u>NW Campus</u>
1998-99	154.6	332.5	6637.9
1999-00	157	365.1	6758.7
2000-01	150.9	360.5	6620.4
2001-02	160.7	411.9	6918.5

**Projected FTE:**

	<u>Andrews</u>	<u>Blount</u>	<u>NW Campus</u>
2002-03	162.4	416.2	6991.5
2003-04	166.1	425.8	7151.9
2004-05	170	435.8	7320.3
2005-06	174	445.9	7489.9
2006-07	177.8	455.8	7656.2

Source: *SFCC Office of Institutional Research, 2002*

**Requirement #4: Facilities at existing campuses are substantially complete and utilized**

The main campus is essentially complete with the recent construction of the new Library and the new Student Services Building.

The Charles L. Blount Center began operations in the beautifully renovated former Gainesville Train Depot in the Summer of 1990. Additional office and classroom space were obtained by the renovation of the former Gainesville Gas Company.

The Andrews Center opened in the renovated historic Bradford County Courthouse in 1985. It has since opened additional classrooms and an auditorium in the renovated century-old Jones-Rosenberg Building. Additional classroom space is being obtained in the new Lillian Stump Educational Building under construction at the site of the old Bradford County Jail.

**Requirement #5: The proposed expansion is in conjunction with the other educational agencies within the community college district and adjacent to the district**

Santa Fe Community College (SFCC) has a long history of partnership and cooperation with the Bradford County School Board and its institutions. The College offered classes in Bradford Schools from its inception and established an office in Bradford High School in 1978. Santa Fe Community College and the Bradford County School Board have an Interinstitutional Articulation Agreement which includes Technology and Applied Science Dual Enrollment, Academic Dual Enrollment, Fine Arts Dual Enrollment, Early Admissions, Tech-Prep/School-To-Work, Remediation Reduction, and Teacher Preparedness. This agreement has been reviewed by each of the SFCC programs involved and has been updated and modified according to specific requests made by representatives of the Bradford County School Board.

**(Appendix D)** Working with the Bradford-Union Vocational-Technical Center, the Southeast Bradford County Special Purpose Center site could provide space for GED courses, as well as, much needed community and adult education classes to serve the Lake Region, a popular retirement area for older citizens who are currently underserved.

Santa Fe Community College also has an Articulation Agreement with the School Board of Alachua County. These include tutoring programs, computer skill training, library programs, basic skills programs and a nationally acclaimed community education and adult education programs. **(Appendix E)**

For these older citizens distance to travel is the major barrier to their achievement of further education, often on dangerously narrow two lane highways such as State Road (SR) 100, SR 21, and SR 26.

Strong support for the new Center to serve the Lake Region area has come from the adjacent service district, including the President of St. Johns River Community College, Clay County Superintendent of Schools, and the Principal of Keystone Heights High School. **(Appendix F)**

**Requirement #6: Alternatives to the proposed expansion**

The members of the Board of Directors of the Santa Fe Community College's (SFCC) Endowment Corporation informed the Vice President for Development about the population growth they had observed in the southeastern part of Bradford County/Lake Region area. After several years of study of the growth in the area and the lack of higher educational opportunities and services for residents of these underserved sections of Bradford and Alachua Counties, including the Lake Region, the Santa Fe Community College Endowment Corporation has recommended and approved expanding the Andrews Center by establishing a Special Purpose Center near Melrose. **(Appendix G)** The area has a critical need for both higher education and better economic opportunities.

Since there are no adequate vacant facilities in the area, the SFCC Endowment Corporation is preparing for the College a 40-year lease on 15 acres with approximately 450 feet of frontage on State Road 21, four miles north of Melrose and one mile south of Keystone Heights. This lease will be similar to the lease agreement that Santa Fe Community College Endowment Corporation entered into in October 1993. **(Appendix H)** The Southeast Bradford County Special Purpose Center, a project of the Santa Fe Community College Endowment Corporation, will consist of over 10,000 square feet of space including eight general classrooms, a community boardroom, and a community/common meeting room. This plan will provide for the establishment of a computer lab, a developmental education lab, as well as space for community and continuing education classes. Both the land and the proposed structure have already been funded through the Santa Fe Community College Endowment Corporation.

**EXCEPTIONS TO THE CRITERIA:**

1) The population to be served:

This facility will allow the underserved student and adult population in the Lake Region Area to receive more readily the much needed introductory and freshman level classes. The lack of nearby facilities, financial assistance and other educational support services such as counseling, admission, testing, financial aid and registration will be resolved for the almost 30,000 citizens within a ten mile radius of Melrose, improving greatly their educational and economic opportunities.

2) Transportation Problems:

This Special Purpose Center will solve transportation problems for residents of the Lake Region, making higher education accessible to many for the first time. Only four miles from Melrose and two miles from the traffic light at State Road (SR) 100 and SR 21 in Keystone Heights, the new Center will be located only 16 miles and an easy 20 minute drive (via SR 219A) from Hawthorne High School, which is currently a 25 miles drive to the Santa Fe Community College (SFCC) Charles L. Blount Center through downtown Gainesville which includes 15 traffic lights.

The SFCC Northwest Campus is 30 miles from the proposed Special Purpose Center which is 15 miles from the Andrews Center in Starke and 24 miles from the Charles L. Blount Center in Gainesville. (Appendix I)

The Southeast Bradford County Special Purpose Center will provide the citizens of the Lake Region Area easy access to higher education with day, evening, and weekend classes currently available to other residents of the State, making real the ideals of the Community College System to be "responsive to local needs and challenges." (*Fla. Statute Section 240.301*).

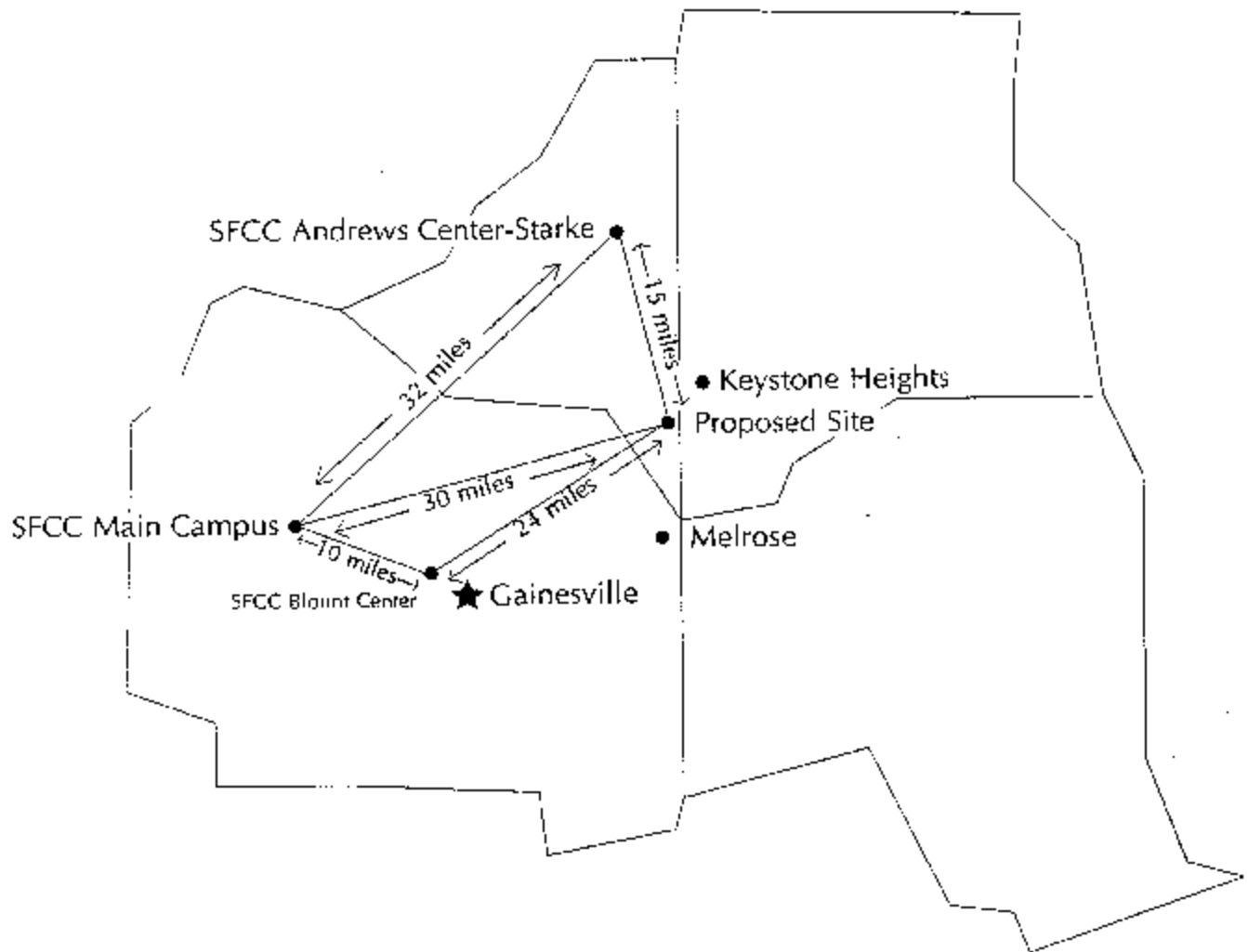
References:

1. *FACT Book 2001-2002*, Institutional Research, Santa Fe Community College
2. Florida Statutes Section 240.301
3. Florida Statistical Abstract, 2000
4. School Board of Alachua County, 2002
5. School Board of Bradford County, 2002
6. School Board of Putnam County, 2002
7. *The Florida Monthly*, January 2002
8. The North Florida Regional Planning Council, Gainesville, Florida, 2002
9. U.S. Census Bureau, 1990
10. U.S. Census Bureau, American Fact Finder, 2000

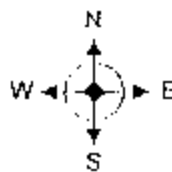
## APPENDICES

- Appendix A Santa Fe Community College Strategic Plan
- Appendix B Board of Trustees Approval
- Appendix C Letters of Support
- Appendix D Articulation Agreement (Bradford County) and Library
- Appendix E Articulation Agreement (Alachua County)
- Appendix F Adjacent District Letters of Support
- Appendix G Santa Fe Community College Endowment Corporation Approval
- Appendix H Santa Fe Community College 40-year Lease for Andrews Center  
(An example of 40-year lease for new Center)
- Appendix I Map of Property and Distance from Centers

## Map of Distance from Main Campus To Outreach Centers



Legend: The SFCC Northwest Campus is 30 miles from the proposed Special Purpose Center which is 15 miles from the Andrews Center in Starke and 24 miles from the Charles L. Blount Center in Gainesville.



**6H-1.040 Campus, Center, Special Purpose Center and Instructional Site Designations.**

The State Board of Community Colleges shall receive proposals from local boards of trustees to establish campuses, centers, and special purpose centers, and shall recommend for or against the establishment of the requested campus or center. The State Board of Community Colleges shall approve or disapprove the proposal for special purpose centers. The following shall apply.

(1) A campus is an instructional and administrative unit of a community college, consisting of college owned facilities and staffed primarily by full-time personnel. It houses a full range of instructional services and of institutional, instructional, and student support services. Facilities and other resources are sufficient to accommodate at least one thousand (1,000) full-time equivalent students and is in compliance with the certain criteria established in Rule 6A-2.039(1)(a)5., FAC.

(2) A center is an instructional and administrative unit with limited support services. It consists of college owned or unowned facilities and is staffed primarily by full-time personnel. It does not necessarily offer a full range of instructional programs or courses and is in compliance with the criteria established in Rule 6A-2.039(1)(a)5., FAC.

(3) A special purpose center is a unit of a community college consisting of college owned facilities or unowned facilities leased for more than one year that provides a limited number of special, clearly defined programs or services, such as instruction or administration, and is in compliance with Rule 6A-2.039(1)(a)6., FAC.

(4) An instructional site is an instructional unit of a community college that offers students a very limited range of instructional programs or courses in unowned facilities leased for one year or less with no support services.

(5) Proposals to establish campuses or centers shall document the following conditions.

(a) The proposed expansion is part of and consistent with the master plan of the community college.

(b) Expanded or new instructional services and support services are necessary to adequately serve the community college district.

(c) Existing campuses have at least three thousand (3,000) full-time equivalent students each, and projected enrollments are stable or increasing, when the proposal is to establish a campus.

(d) Facilities at existing campuses, as identified in the master plan of the community college, are substantially complete.

(c) Enrollment projections in the master plan of the community college are for at least one thousand (1,000) full-time equivalent students for a proposed campus or at least four hundred (400) for a proposed center. A proposed center to provide central administrative services for a community college shall be exempt from this enrollment condition.

(f) The proposed expansion is in conjunction with other educational agencies within the community college district and adjacent to the district.

(g) Alternatives to the proposed expansion were considered by the board of trustees.

(6) Proposals to establish a special purpose center shall document the following:

(a) The proposed expansion is part of and consistent with the master plan of the community college.

(b) The proposed services are necessary to adequately serve the community college district.

(c) Projected enrollments justify expansion.

(d) Projected facility needs justify expansion.

(e) Proposed expansion is in conjunction with the other educational agencies within the community college district.

(f) Alternatives were considered by the board of trustees.

(7) Exceptions to (5) and (6) herein are authorized when justified in the judgment of the State Board of Community Colleges due to the nature of the services to be provided, the number and types of students to be served, the population to be served, transportation problems, the availability of acceptable sites and facilities, energy conservation, or population shifts.

(8) The State Board of Community Colleges may use the services of the office of Educational Facilities and of others to evaluate proposals and develop recommendations.

Specific Authority 240.311(2)(3)(j) FS. Law Implemented 235.19, 240.311(3)(g)(I)(j), 240.319(3)(e)(f), 240.327 FS. History - New 2-27-84, Formerly 6H-1.40, Amended 6-22-87.