



Class Size Reduction

Florida Board of Education
August 2002



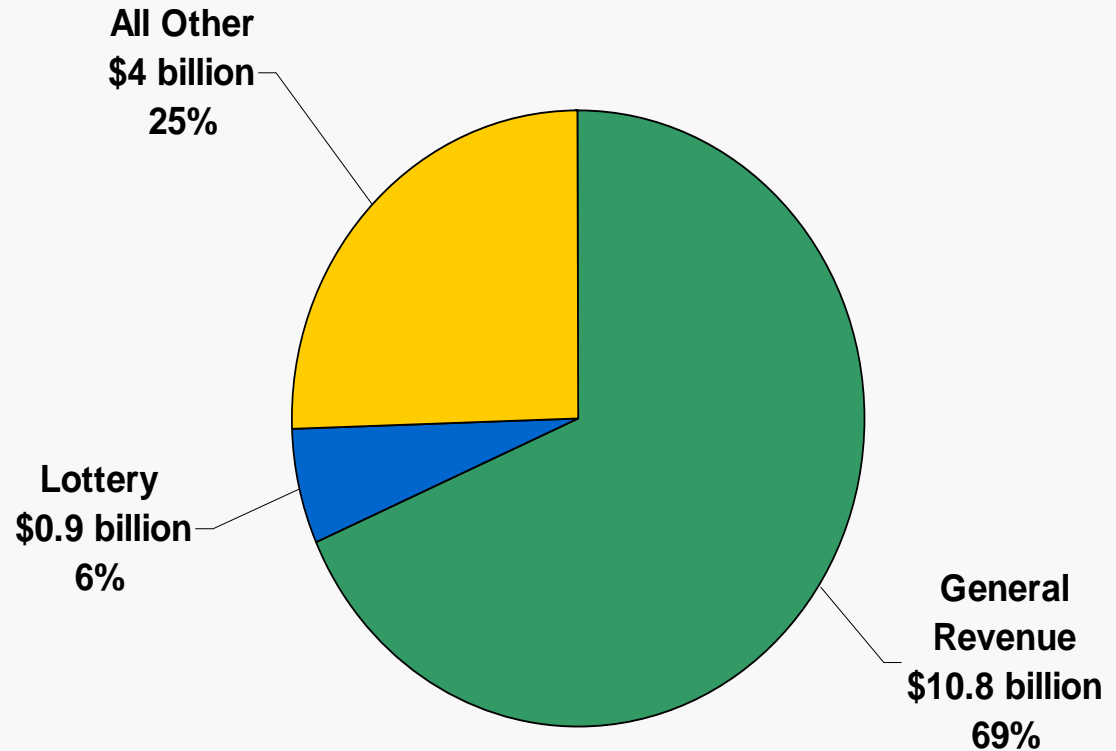
Which is the correct answer?

How much is 27.5 billion?

- A. 27,500,000
- B. 27,500,000,000
- C. 2,750,000,000
- D. 275,000,000

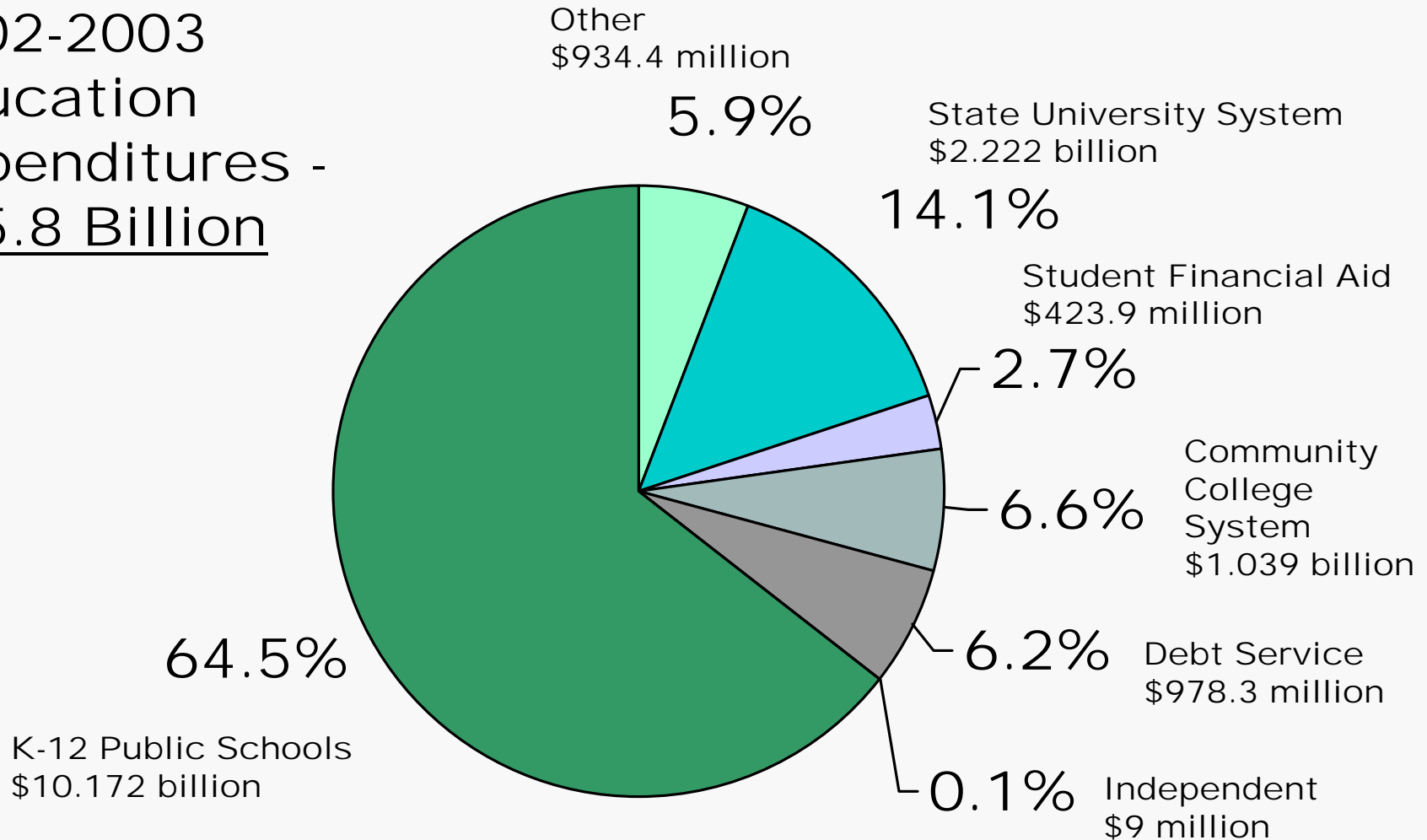
How much is \$27.5 billion?

Florida's 2002-2003 Education Expenditures - All GAA Sources - \$15.8 Billion



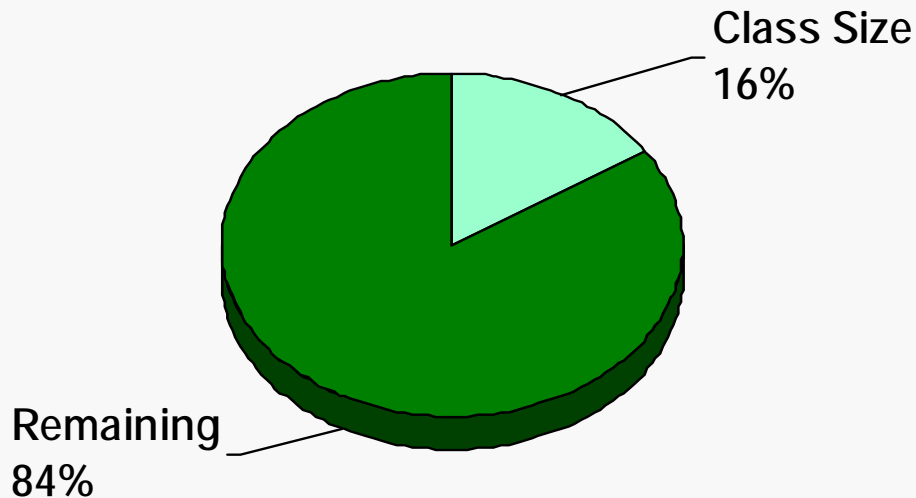
What does \$15.8 billion buy?

2002-2003 Education Expenditures - \$15.8 Billion



What is the impact on recurring funds?

\$15.8 Billion - All GAA Sources



- Of the \$15.8 billion available, 16% would need to be redirected to class size reduction

K-12 Potential Reductions

Major K-12 Categorical Programs

-	\$334.7	million	Lottery – District Discretionary
-	\$10.7	million	Public Broadcasting
-	\$33.1	million	Excellent Teaching
-	\$36	million	Teacher Training
-	\$6.4	million	Virtual High School
-	\$5.1	million	Reading Initiative
-	\$3.2	million	College Reach Out
-	\$423.1	million	Student Transportation
-	\$62.4	million	Public School Technology
-	\$227.9	million	Instructional Materials
	\$1,142.6	million	Potential K-12 Reductions

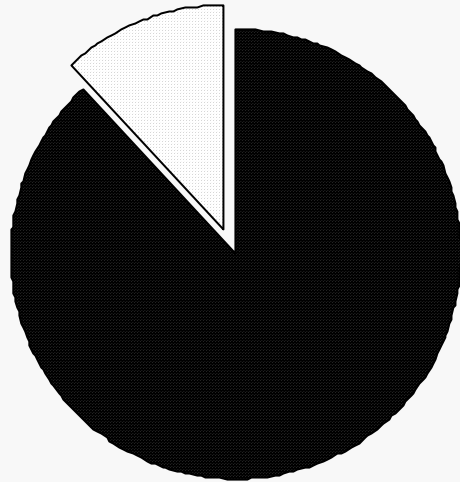
Still Needed: \$1.36 billion

Needed Reductions to Fund Class Size - \$2.5 Billion

Covers the SUS Budget (\$2.2 Billion)

Still Needed:

\$300 Million



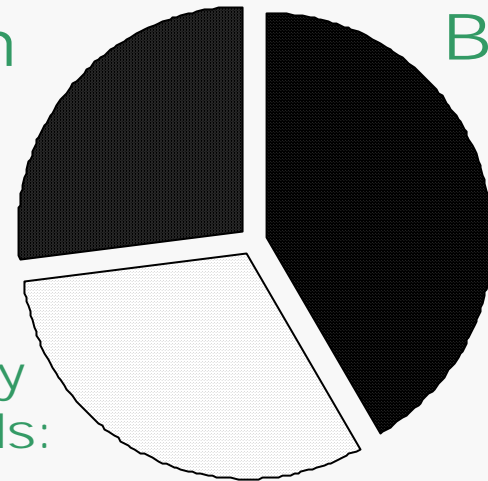
State University System:

\$2.2 Billion

Covers both the Community College Budget (\$1.04 Billion) and the Lottery Funding (\$785.5 Million)

Still Needed:

\$675.5 Million



Discretionary Lottery Funds:

\$785.5 Million

Community Colleges:

\$1.04 Billion

Impact on Districts

One School's Challenge: *Sample School*

School
Grades:

01-02: A

00-01: C

99-00: A

98-99: B

01-02 K-5 FTE: 1,166

00-01 % Free/Reduced Lunch: 26%

00-01 Average Class Size: 24.7

If the proposed class size amendment passes, **Sample School** would need: **21** additional classes with **21** additional teachers

What are **some options** for meeting additional classroom needs?

Rezoning, Busing, Double Session, Building an Additional School, Using Portables, Using Space from Other Services and Programs, Choice





Tax Implications

CEPRI estimates two possible sources of revenue:

- **Sales Tax**—would require an approximate 23% increase, amounting to 1.4 cents
- **Corporate Income Tax**—would need to increase from 5.5% to 20.5%

Impact on Sales Tax Rates in Florida's Counties

Based on CEPRI's estimates, 45 Counties
Would Have 8.4% to 8.9% Sales Tax Rates

- Alachua
- Baker
- Bay
- Bradford
- Calhoun
- Charlotte
- Clay
- Columbia
- DeSoto
- Dixie
- Duval
- Escambia
- Flagler
- Gadsden
- Gilchrist
- Glades
- Hamilton
- Hardee
- Hendry
- Highlands
- Hillsborough
- Holmes
- Indian River
- Jackson
- Jefferson
- Lafayette
- Lake
- Leon
- Levy
- Liberty
- Madison
- Monroe
- Nassau
- Okeechobee
- Osceola
- Pinellas
- Sarasota
- Seminole
- Sumter
- Suwannee
- Taylor
- Union
- Wakulla
- Walton
- Washington

Equitable School Funding

- The Florida Constitution requires equitable school funding.
- Allocations to reduce class size will increase the disparity of per pupil funding from \$1,100 per FTE to \$1,500 per FTE, representing an increase of 36%.

Equity Implications

There are dramatic differences in class size reduction costs among school districts:

-Highest-

Broward	\$1,397.00 (highest)
Dade	\$1,245.85
Palm Beach	\$1,195.06

-Lowest-

Franklin	\$197.10
Madison	\$86.47
Gadsden	\$41.58 (lowest)



Cost to Achieve Equity

Estimated Cost of
Maintaining Current Equity:
\$1,216,529,468



This amount is NOT included in the \$2.5 billion estimated annual recurring cost in 2002 dollars.



Equity Impact

School districts that have made the LEAST progress on class size reduction will get the MOST money.

Teacher Salary vs. Class Size

With limited resources, districts have made choices ... above average salaries with higher class sizes

State	23.3	\$39,275
Dade	24.7	\$44,964 (highest)
Palm Beach	25.9	\$44,126
Broward	26.6	\$40,970

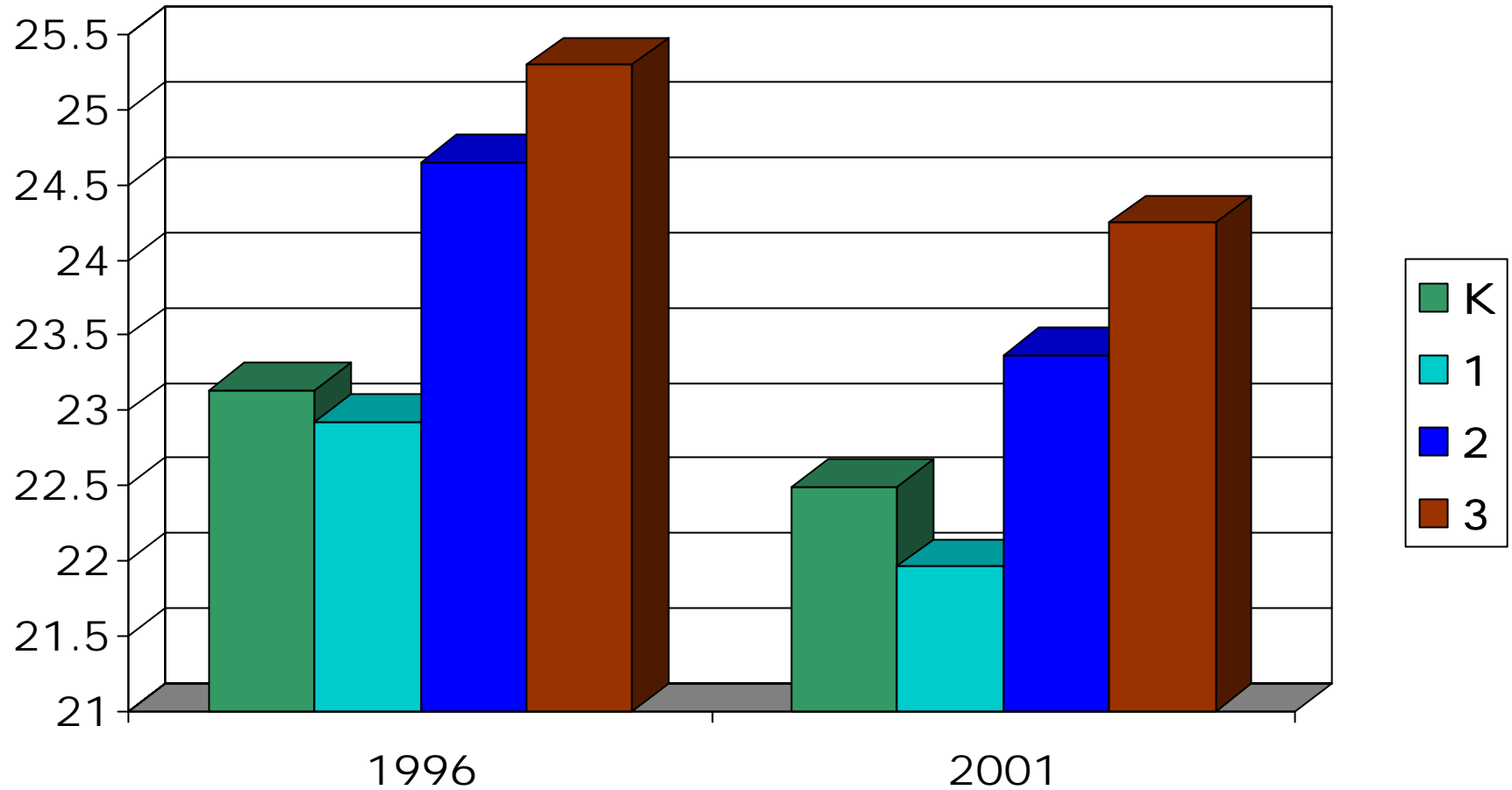
Teacher Salary vs. Class Size

... or below average salaries with lower class sizes

State	23.3	\$39,275
Gadsden	16.4	\$31,750
Dixie	19.0	\$31,338
Union	21.9	\$30,047 (lowest)

Grade K-3 Average Class Size

1996-2001

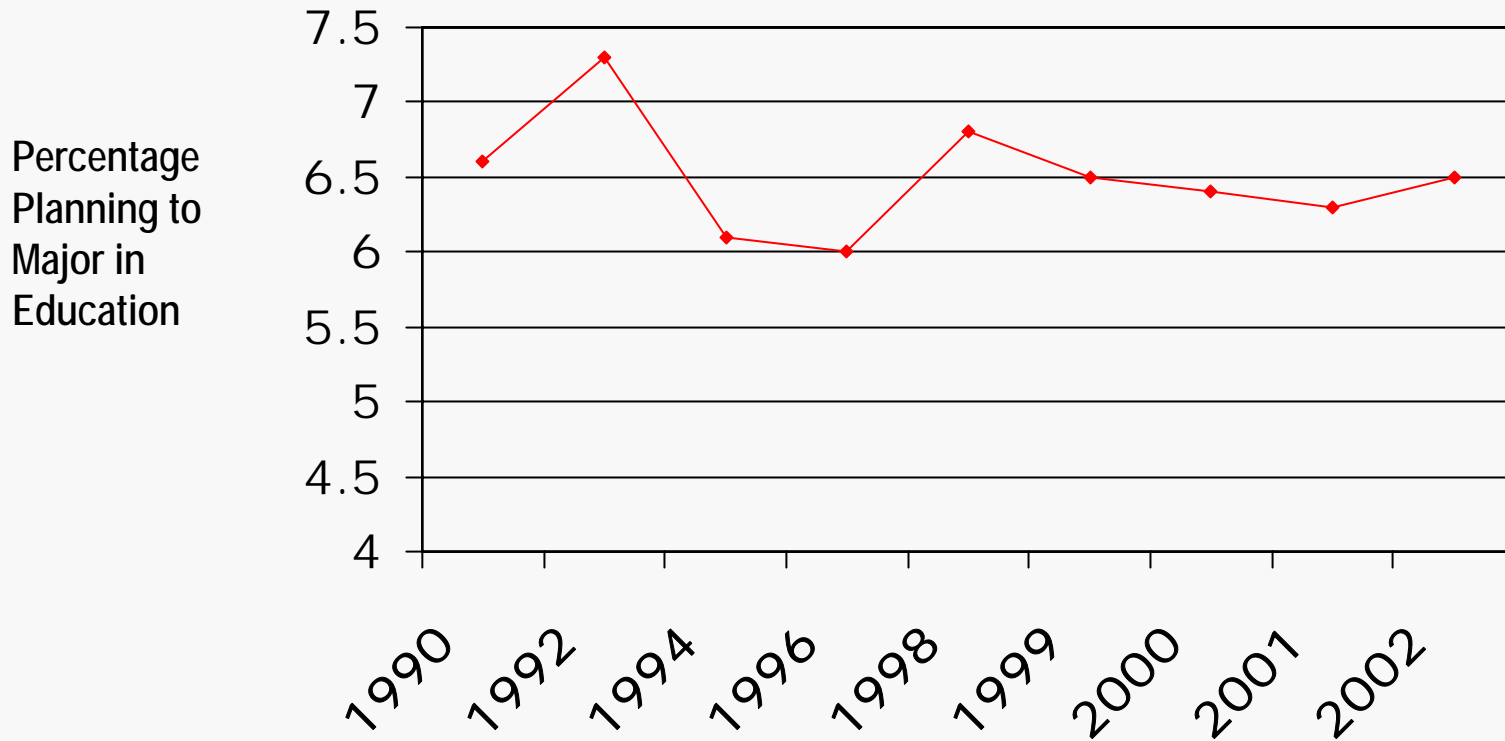


Florida's Teacher Shortage

- **160,000 new teachers will be needed in the next 10 years**
 - Address Normal Growth
 - Replace Aging Workforce in Schools
- **Class size reduction will increase by 20% the number of teachers needed by an estimated 31,800 - when supply is already scarce**

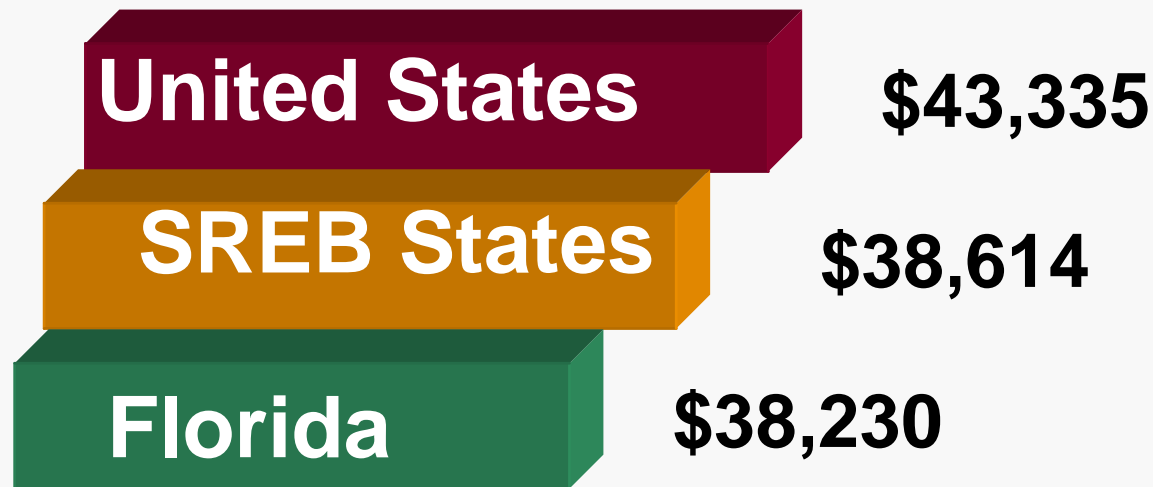
Finding Teachers

Florida's SAT Test Takers are not planning on teaching careers -

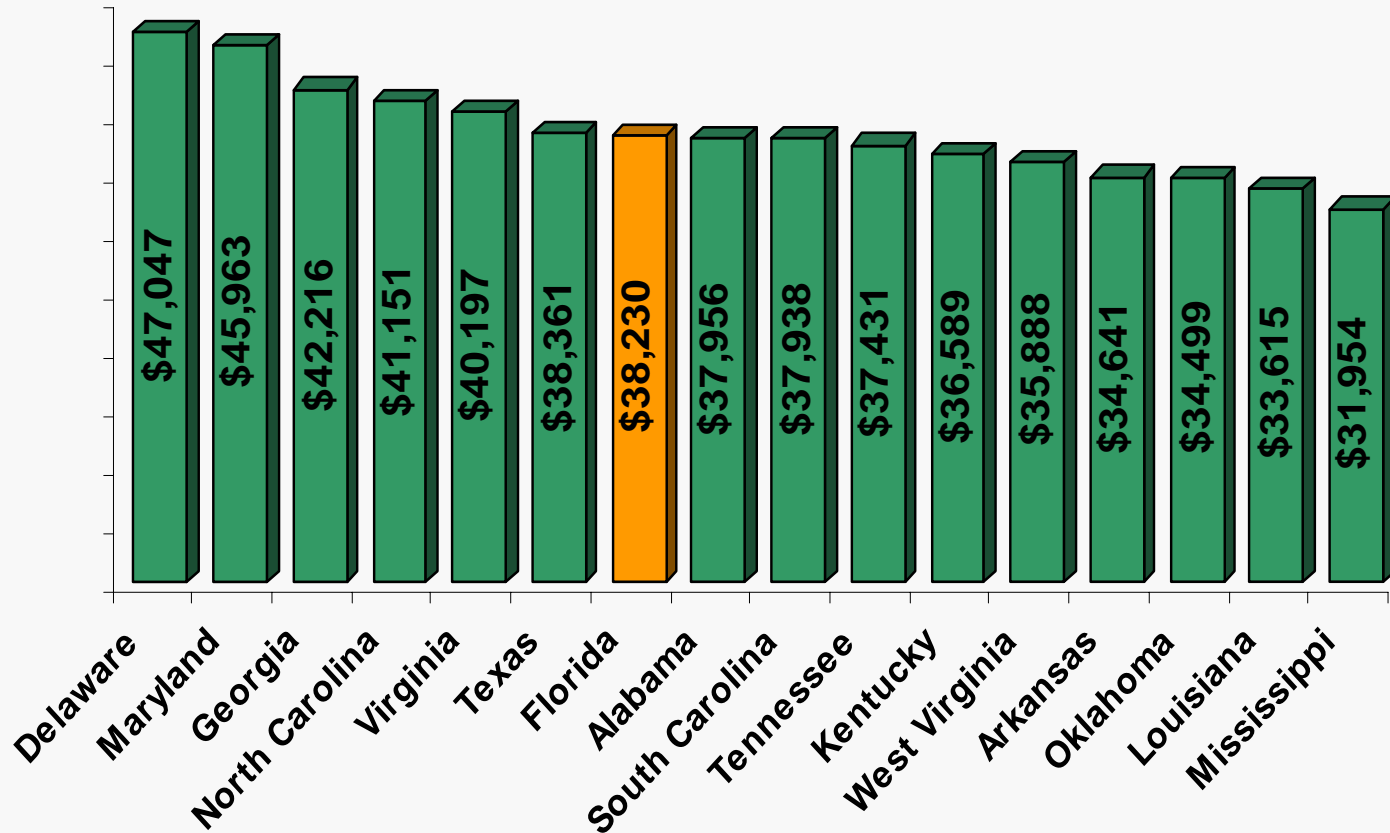


Comparison of Florida's Average Teacher Salaries to Nation and SREB States

2000 - 2001 Average Salaries



Average Teacher Salaries in SREB States: 2000-2001



Strategic Imperative 1: *Increasing the supply of highly qualified K-12 instructors*

Strategic Imperative #1 Projects:

- Teacher Recruitment Campaign
- Teacher First Response Center
- Incentives and Alternative Certification for Instructors with High Demand Skills
- Increased Professional Support for Beginning Teachers
- Teacher “Lifeline” Program
- Instructor Staffing, Compensation, and Evaluation Review for Florida’s K-12 Teachers