



2004 Update

Baccalaureate Degree Programs in Florida Community Colleges



2001 Florida Legislature...

- Authorized St. Petersburg College to grant Bachelor's Degrees in Nursing, Information Technology and Education (Section 1004.73, F.S.)
- SB1162 Amended Section 240.3836, F.S. and authorized the Florida Board of Education to approve community colleges' authority to grant Bachelor's Degrees in limited, select areas. (Section 1004.66(7)(a))



2002 -2003 State Board Approvals

- Chipola College
 - Authority to grant Bachelor's Degree in Secondary Education
 - Concurrent use Partnership with FSU in Nursing and Business administration. (Dissolved in 2003)
- Edison College
 - Concurrent use partnership with Florida Gulf Coast University in Computer Technology and Public Services Management
- Miami Dade College
 - Authority to grant Bachelor's Degrees in Secondary Mathematics and Secondary Science Education and Exceptional Student Education.
- Okaloosa-Walton College (2003)
 - Authority to grant Bachelor's Degrees in Nursing and Project and Acquisitions Management

2004-2005 Community College Baccalaureate Programs

College	Degree	Program Name	03-04 FTE (Actual)	04-05 FTE (Estimated)	05-06 FTE (Projected)
Chipola	BS	Secondary Education (Biology and Mathematics)	8	30	80
Miami Dade	BS	Secondary Science Education (Biology, Chemistry, Earth Science and Physics), Mathematics and Exceptional Student Ed.	164	300	367
Okaloosa-Walton	BS	Nursing*	0	6	9
	BAS	Project and Acquisitions Management	0	50	74
Edison**	BAS	Public Services Management and Computer Technology	22	31	37
St. Petersburg	BS	Education (Elementary, Exceptional, Secondary Biology, Secondary Math)	486	547	609
	BAS	Dental Hygiene	164	427	648
	BS	Nursing			
	BAS	Technology Management	183	183	183

*Partnership With University of West Florida

** Partnership With Florida Gulf Coast University



Characteristics of Community College Baccalaureate Students, Spring 2004

Chipola	13	27.8	85	23
Miami Dade	365	35	38	55
St. Petersburg	925	34.5	41	45

Chipola	62	38	0
Miami Dade	70	30	0
St. Petersburg	69	31	0

Chipola	0	8	0	0	92	0
Miami Dade	0	26	53	0	20	1
St. Petersburg	3	9	4	1	81	2



Community College Baccalaureate Grants

Actual, Estimated and Projected Program State Appropriations

\$937,600	\$6,069,302	\$6,082,158	\$7,132,144	\$10,435,839



Community College Baccalaureate Grants

Nature of Expenditures

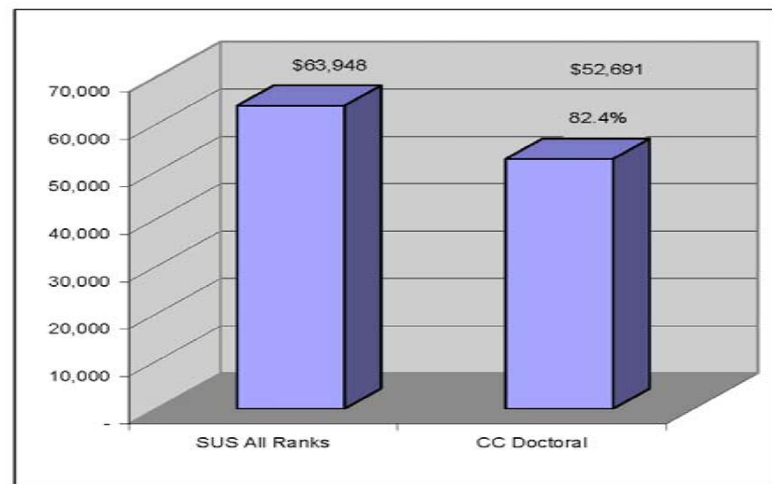
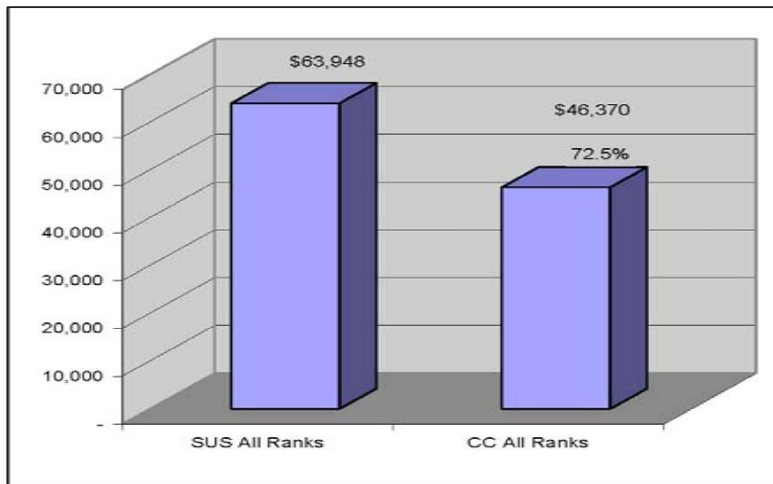
Recurring	\$774,132	\$4,150,499	\$7,752,693	\$10,267,888	\$15,219,208
Non Recurring	\$0	\$346,007	\$630,108	\$543,483	\$668,758
Total	\$774,132	\$4,496,506	\$8,382,801	\$10,811,371	\$15,887,966



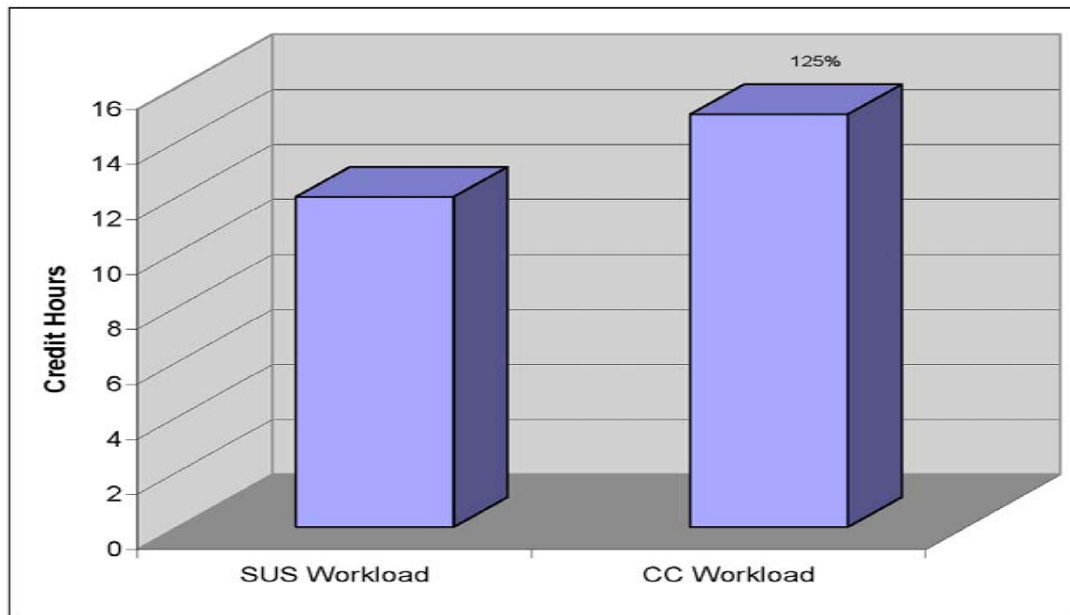
Sources of Funds

A. Revenue	Baccalaureate Degree Grants	\$937,600	\$6,069,302	\$6,082,158	\$7,132,144	\$10,435,839
	College Operating Budget	\$36,642	\$64,072	\$53,239	\$0	\$0
	Student Fees	\$0	\$705,497	\$1,467,994	\$2,976,323	\$4,805,169
	Federal Funds	\$0	\$113,533	\$0	\$0	\$0
	Contributions or Matching Grants	\$0	\$0	\$0	\$0	\$0
	Other Grants or Revenues	\$0	\$277,050	\$51,392	\$16,500	\$17,325
B. Carry Forward		\$0	\$200,110	\$2,933,058	\$2,205,040	\$1,518,636
Total Funds Available		\$974,242	\$7,429,564	\$10,587,841	\$12,330,007	\$16,776,969
Total Unexpended Funds (Carry Forward)		\$200,110	\$2,933,058	\$2,205,040	\$1,518,636	\$889,003

Florida Community College Average Annual Faculty Salaries Compared With SUS 2003-04



Florida Community Colleges Faculty Workload Compared With SUS





2002-2003 Cost Analysis

Cost Per Credit Hour

Direct Cost	\$76.76	\$126.90
Support Cost	\$77.83	\$117.46
		\$244.36
Fees Per Credit Hour	(\$49.50)	(\$77.54)
Other Revenue per Credit Hour	(\$3.56)	\$0.00
		\$166.82



Supplemental Information from Community Colleges

- St. Petersburg College
- Chipola College
- Okaloosa-Walton College
- Edison College
- Miami Dade College