



---

# NAEP

FLORIDA

NATIONAL ASSESSMENT  
OF EDUCATIONAL  
PROGRESS

---



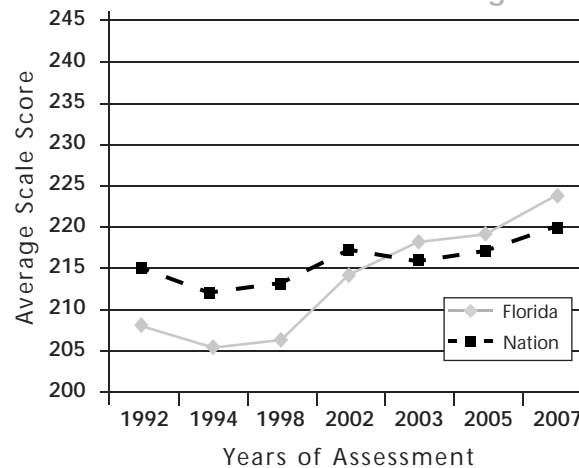
# What is NAEP?

- Authorized by Congress and implemented in 1969, the National Assessment of Educational Progress (NAEP) is the only ongoing nationally representative measure of what students in the United States know and can do in various subject areas.
- NAEP at the state level began in 1990, and in 2003 NAEP participation became mandatory for all states and territories under the federal *No Child Left Behind Act of 2001*.
- NAEP is based on frameworks established by the National Assessment Governing Board (NAGB). Sample Question Booklets are available at <http://nces.ed.gov/nationsreportcard/about/booklets.asp>.
- Representative samples of schools and students in every state are randomly selected to participate in NAEP. Each student takes only a portion of the assessment.
- Performance reports present compiled national and state assessment results. For state NAEP reading and mathematics, reports are usually produced within six months of the assessment.
- Using NAEP, Florida's results can be compared to those of the nation and to those of other states. As Florida's K-12 education system provides opportunities for students to achieve at high levels, Florida's NAEP scores will improve!

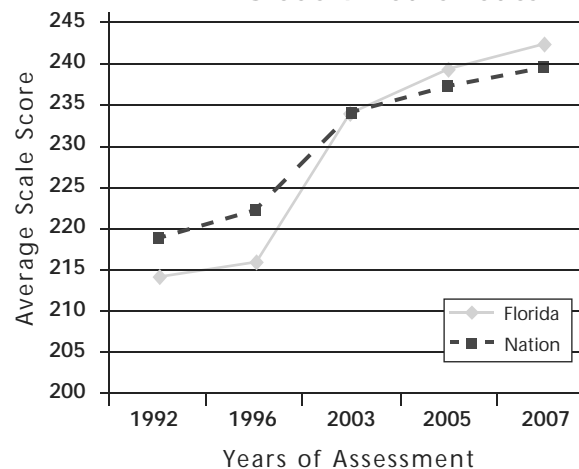
# How Do Florida's Students Compare With the Nation's?

## NAEP Grade 4 Reading and Mathematics Results

### NAEP Grade 4 Reading

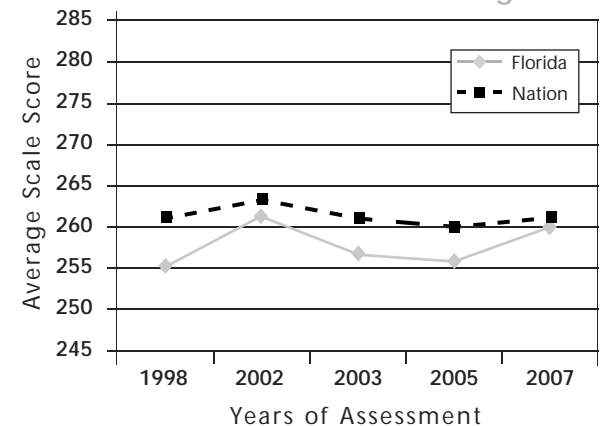


### NAEP Grade 4 Mathematics

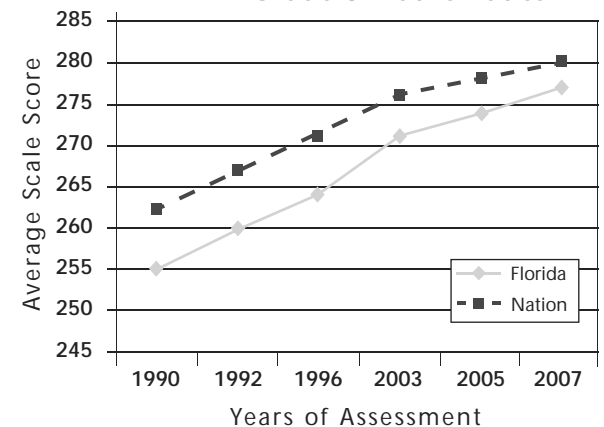


## NAEP Grade 8 Reading and Mathematics Results

### NAEP Grade 8 Reading



### NAEP Grade 8 Mathematics



#### Notes:

1. Accommodations were not offered in 1992, 1994, and 1996.
2. NAEP was not designed to provide a developmental scale between Grades 4 and 8, which is why scores on the two scales are not directly comparable.
3. Reading and Mathematics are different tests and therefore, scores cannot be compared.
4. The NAEP Reading and Mathematics scale ranges from 0 to 500.
5. No district, school, or student-level results are produced.