

# K-12 Administration Updates

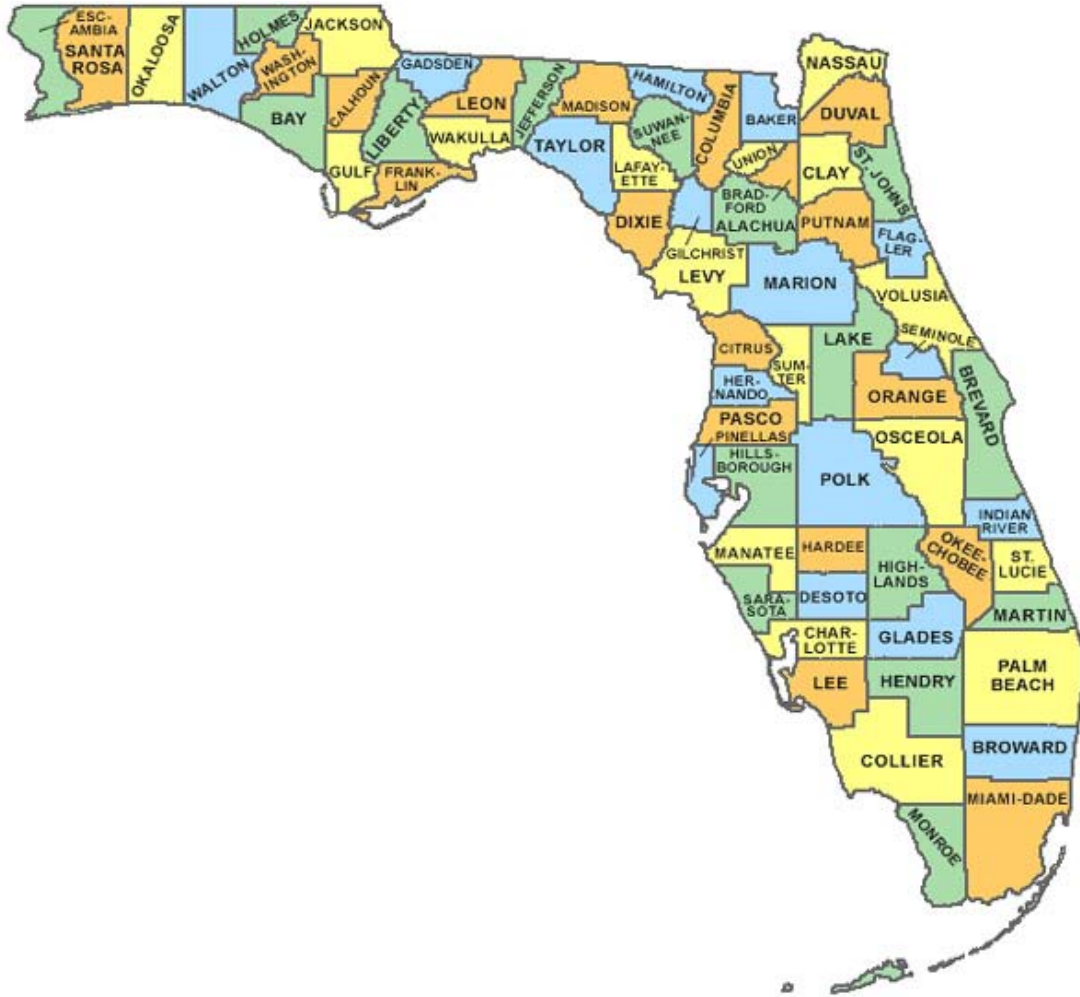


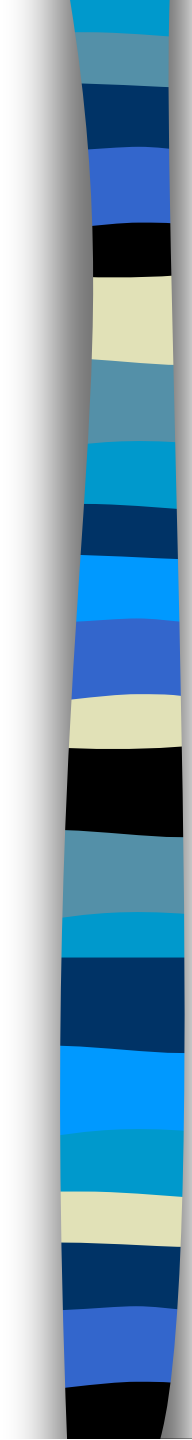
2011 Annual Assessment and  
Accountability Meeting

September 7 & 8, 2011



# What's NOT New



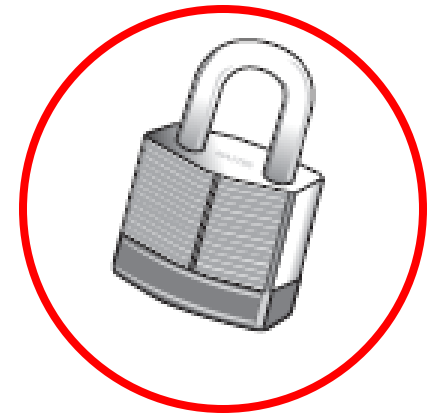


# Test Security Policies and Procedures

Florida State Board of Education Rule 6A-10.042, FAC, was developed to meet the requirements of the Test Security Statute, s. 1008.24, F.S., and applies to anyone involved in the administration of a statewide assessment. The Rule prohibits activities that may threaten the integrity of the test. See Appendix B for the full text of the Florida Test Security Statute and State Board of Education Rule. Examples of prohibited activities are listed below:

- Reading or viewing the passages or test items
- Revealing the passages or test items
- Copying the passages or test items
- Explaining or reading passages or test items for students
- Changing or otherwise interfering with student responses to test items
- Copying or reading student responses
- Causing achievement of schools to be inaccurately measured or reported

Please read and familiarize yourself with the Statute and Rule on pages 150–152.





# What's New

- Student Pledge
  - Signature page in paper test materials
    - Test books for RMS; Planning sheet for Writing
  - Check box for CBT tests
    - Students cannot move on without checking the box
- Seating Charts
- Test Administrator Prohibited Activities
- TestHear CBT Accommodated Forms
- Parent Letters
- Shipment Detail
- Four-function Calculators



# Materials Shipments

- Test Administration Manuals/CBT Work Folders (if applicable)
- PreID Labels and Rosters
- Test Materials
- Additional Orders
  - Verify PearsonAccess orders prior to placing



# Fall 2011 Retake

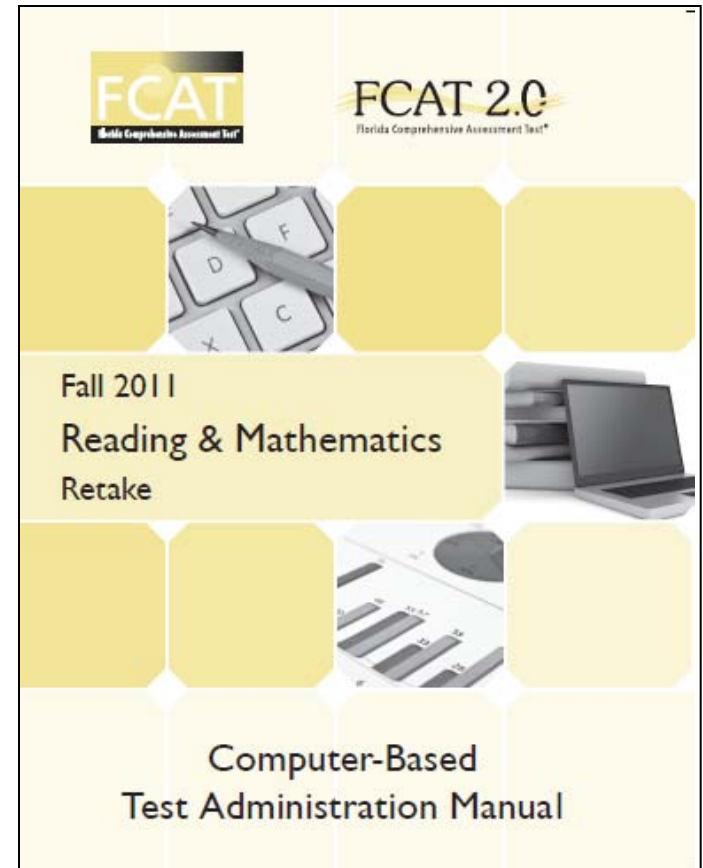
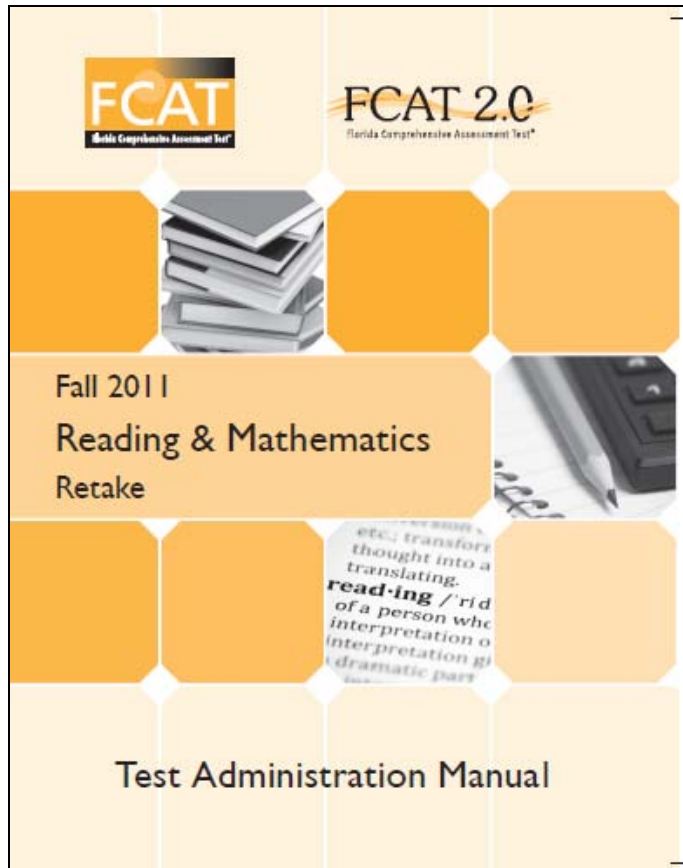
- October 10 – 14 and October 17 – 21
- Entire two-week window may be used for CBT administration
- You selected one week to complete paper tests
- Extra 3 days for make ups – CBT ONLY (October 24-26, not in the CBAC Tool)



# Fall 2011 Retake

- Mathematics Reference Sheet – perforated page in manual and posted to PearsonAccess (for CBT hard copies)
- Manuals are due in districts the same time as test materials (9/16) – manual boxes will have round, orange stickers

# Fall 2011 Retake



TestHear instructions in CBT Accommodations Guide



# Fall 2011 Retake

- FCAT 2.0 Reading Retake
  - CBT with paper accommodations
  - Schools must take care to ensure correct test is administered
    - Test name in PearsonAccess
    - Logo/title on test and answer book
  - Passing score required for students who entered grade 9 in 2009-10 and beyond



# Fall 2011 Retake

- FCAT 2.0 Reading Retake
  - Two sessions administered over two days
    - CBT Seal Codes
    - Plastic Pull-tabs on Test and Answer Books
    - No session marker for TestHear forms
    - No session page/header on paper tests
    - Updated administration scripts

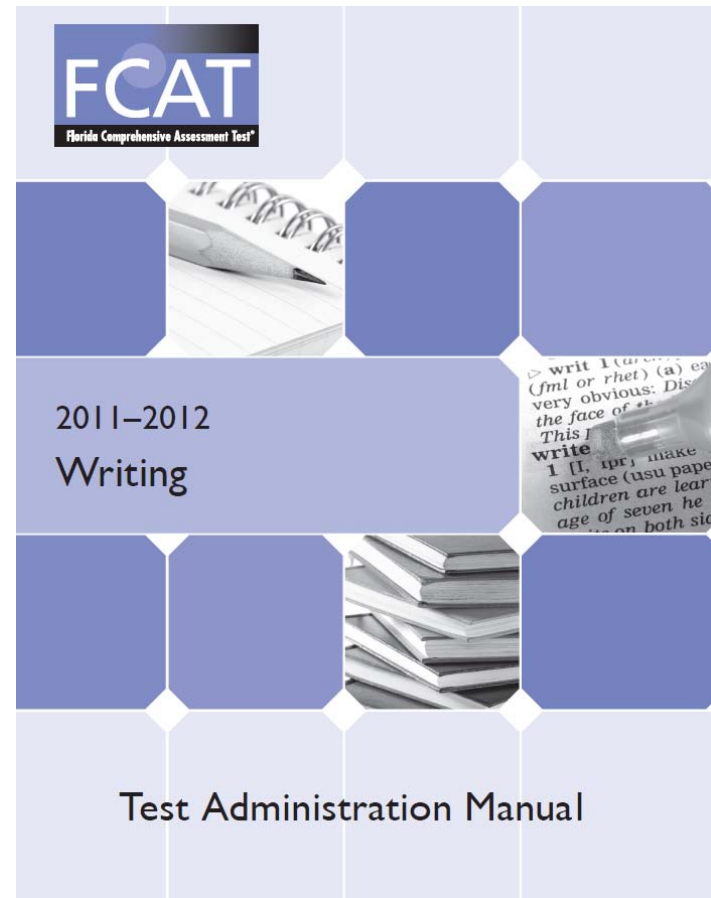


# December 2011 Writing Field Test

- December 6 – 7, 2011
- Sample is currently being selected; you will be notified of participating schools in your district (if any) by the end of September.
- Separate PreID window – First two weeks in October

# December 2011 Writing Field Test

- Test Administration Manual
  - Contains information and scripts for BOTH the Writing Field Test and Spring FCAT Writing
  - Manuals will need to be stored at schools or district locations until Spring
  - Due in Districts 11/18/11





# 2011-12 Winter Algebra 1 EOC

- December 5 – 17 OR January 9 – 20
- CBT administration with paper-based accommodations
- Enrollment Window – September 26 – October 7
- PreID Window – November 2 – 18
- No paper-based LP or One-Item-Per-Page materials (all CBT administrations moving forward)

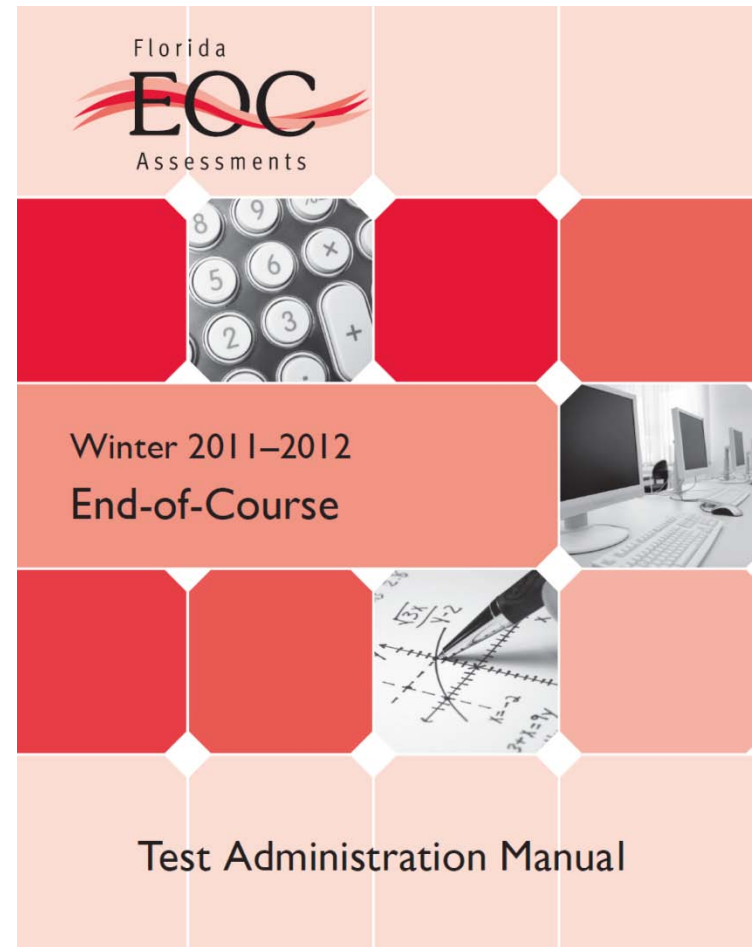


# 2011-12 Winter Algebra 1 EOC

- One 160-minute session
  - 10 minute stretch break after 80 minutes
  - After the stretch break, students may be dismissed as they finish
  - Students may have extra time to complete the test (up until the end of the school day)

# 2011-12 Winter Algebra 1 EOC

- Administration manual will contain CBT, PBT, and Accommodations information (no separate guide)





# Spring 2012 FCAT Writing

- February 28 – March 1, 2012
- PreID Window in December
- Writing Prompt is back in the Writing Folder
- No gridded test group code (will be recorded on Record of Required Administration Information and Seating Chart)
- Planning sheets containing signed student pledges will be returned in DAC Only boxes



# Spring 2012 R/M/S

- FCAT/FCAT 2.0 Retakes
  - April 9 – 20, 2012
  - FCAT 2.0 Reading/FCAT Mathematics – CBT with paper accommodations
  - FCAT Reading is CBT optional (last administration)
  - Paper-based materials will be in separate boxes, but still delivered with other RMS materials



# Spring 2012 R/M/S

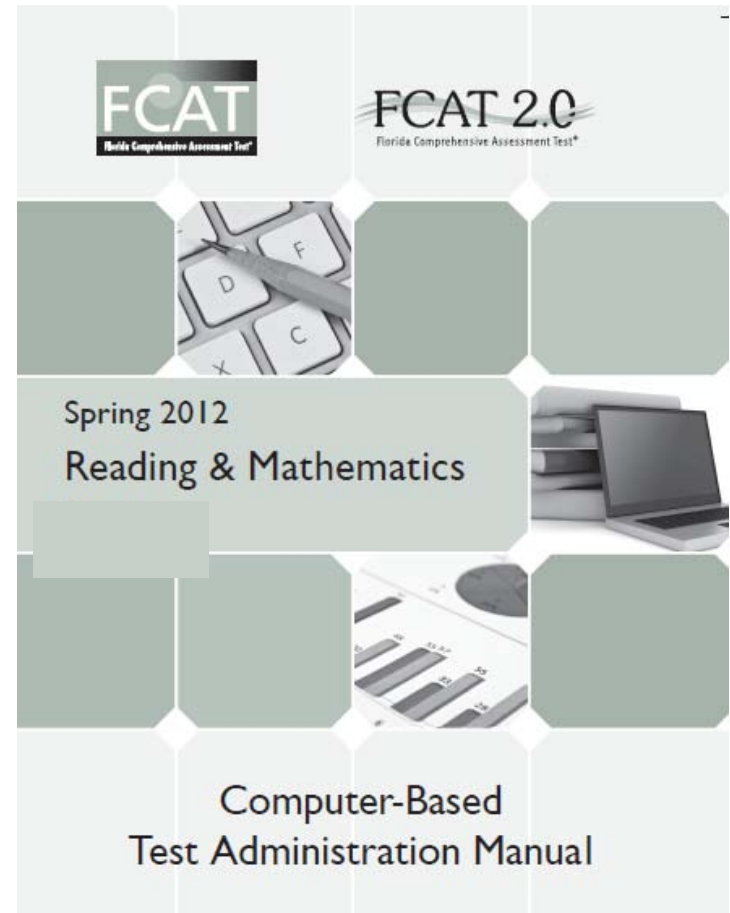
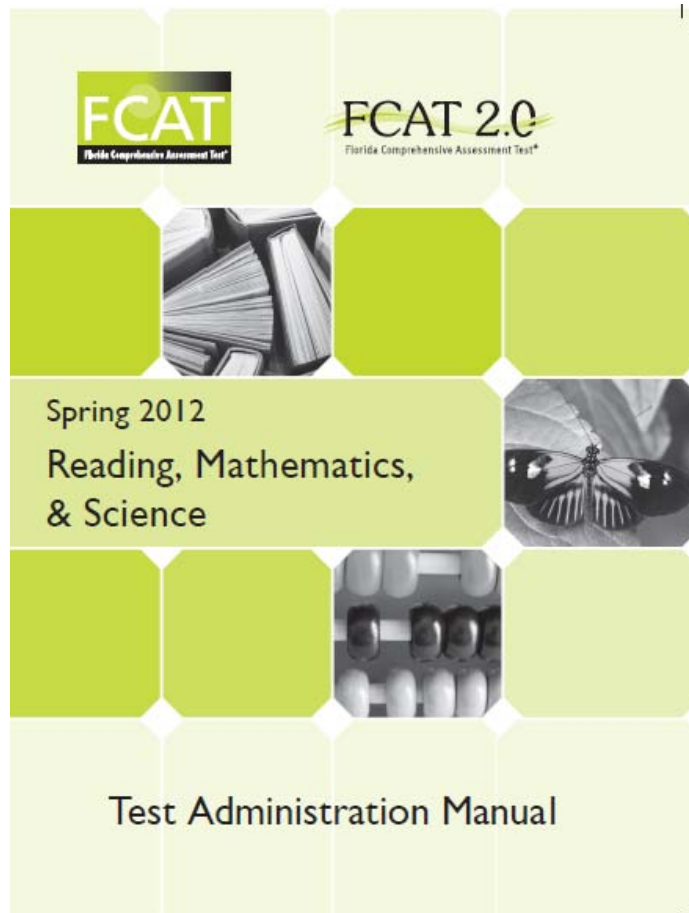
- **April 16 – 20**
  - Grades 9 and 10 (paper-based) FCAT 2.0 Reading
- **April 16 – 24**
  - Grade 3 FCAT 2.0 Reading & Mathematics
- **April 16 – 27**
  - Grades 6 & 10 FCAT 2.0 Reading (computer-based)
  - Grades 4, 5, 7, & 8 FCAT 2.0 Reading
  - Grades 4 – 8 FCAT 2.0 Mathematics
  - Grades 5 & 8 FCAT 2.0 Science



# Spring 2012 R/M/S

- Grade 5 FCAT 2.0 Science
  - Two 80-minute sessions administered over two days
  - No Reference Sheet
- Grade 8 FCAT 2.0 Science
  - Two 80-minute sessions administered in one day
  - Periodic Table of the Elements only; no Reference Sheet

# Spring 2012 R/M/S

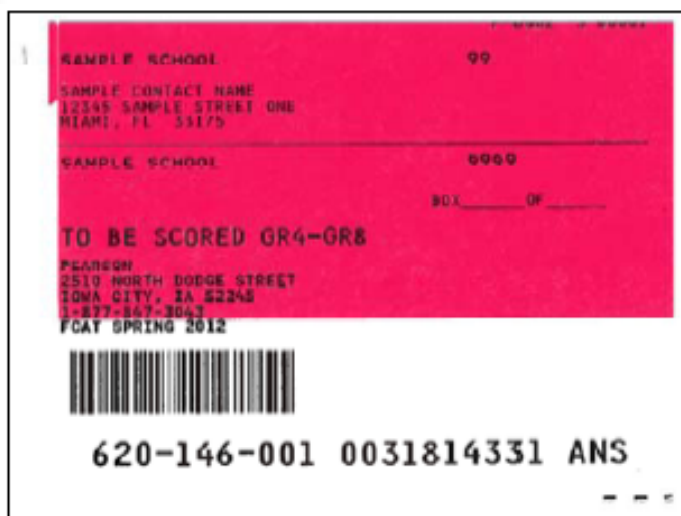




# Spring 2012 R/M/S

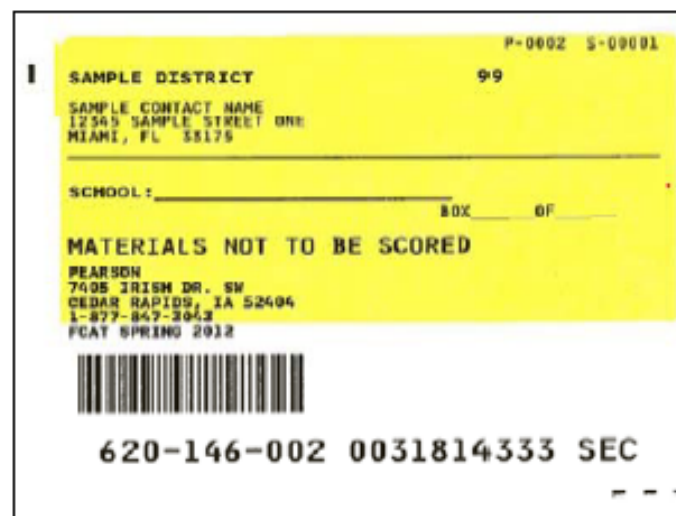
- Two PreID Windows
  - Wave 1 – January
  - Wave 2 – February
    - PreID labels will be produced for additions or corrections made for students taking paper-based tests
    - Additional students may be placed into CBT sessions

# Spring 2012 R/M/S



A red rectangular label with black text. At the top right, it says '99'. The text includes 'SAMPLE SCHOOL', 'SAMPLE CONTACT NAME', '12345 SAMPLE STREET ONE', 'MIAMI, FL 33175', 'SAMPLE SCHOOL', '9999', 'BOX OF', 'TO BE SCORED GR4-GR8', 'PEARSON', '2510 NORTH DODGE STREET', 'IOWA CITY, IA 52248', '1-877-847-3043', 'FCAT SPRING 2012', a barcode, and the number '620-146-001 0031814331 ANS' at the bottom.

Spring R/M/S/W Grades 4-8

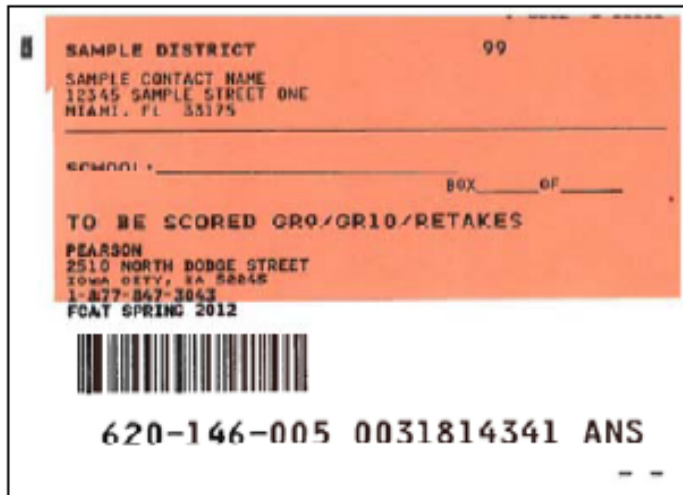


A yellow rectangular label with black text. At the top right, it says 'P-0002 S-00001' and '99'. The text includes 'SAMPLE DISTRICT', 'SAMPLE CONTACT NAME', '12345 SAMPLE STREET ONE', 'MIAMI, FL 33175', 'SCHOOL: \_\_\_\_\_', 'BOX OF \_\_\_\_\_', 'MATERIALS NOT TO BE SCORED', 'PEARSON', '7405 IRISH DR. SW', 'CEDAR RAPIDS, IA 52404', '1-877-847-3043', 'FCAT SPRING 2012', a barcode, and the number '620-146-002 0031814333 SEC' at the bottom.

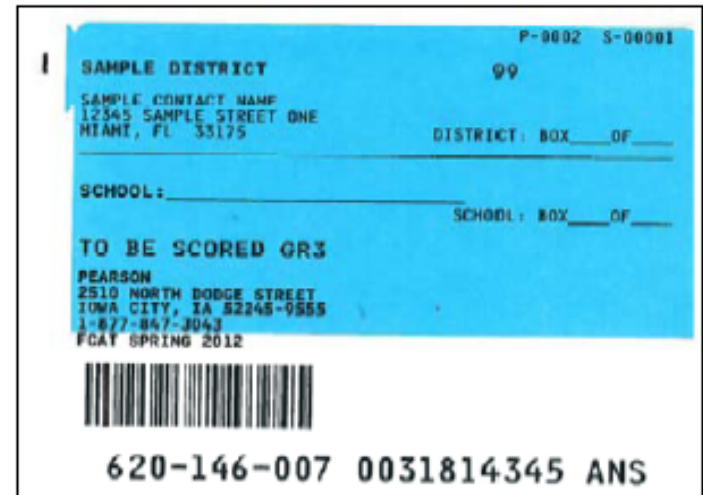
Spring R/M/S/W/Retake

- **RED** Labels – TO BE SCORED materials for **Grades 4 – 8**
- **YELLOW** labels – All NOT TO BE SCORED materials

# Spring 2012 R/M/S



Spring R/M Grade 9, Grade 10 & Retakes



Spring R/M Grade 3

- **PEACH** Labels – TO BE SCORED materials for **Grades 9 – 10** and **Retakes** (all high school materials)
- **BLUE** labels –TO BE SCORED **Grade 3** materials

# Spring 2012 R/M/S

<b>WHITE Labels</b>	Special Document (Large Print, Braille, One-Item-Per-Page) TO BE SCORED Materials Only
<b>YELLOW Labels</b>	<b>All NOT TO BE SCORED Materials</b> <b>Include Special Document NOT TO BE SCORED Materials</b>

- All Special Document materials previously returned with White Labels
- NOT TO BE SCORED Special Document materials now returned with other NTBS materials using Yellow Labels



# Spring 2012 EOCs

- Biology 1 and Geometry
  - April 23 – May 11
- Algebra 1
  - April 30 – May 18
- U.S. History Field Test
  - April 23 – June 1



# Spring 2012 EOCs

- Biology 1, Geometry, & Algebra 1
  - One 160-minute Session
    - 10 minute stretch break after 80 minutes
    - After the stretch break, students may be dismissed as they finish
    - Students may have extra time to complete the test (up until the end of the school day)
  - Subjects must be administered in the designated order
  - A new subject may begin when the previous subject is completed in the district
  - No transcription into the computer needed for paper-based tests

# Spring 2012 EOCs

P-0002 5-00001

SAMPLE SCHOOL 99

SAMPLE CONTACT NAME  
12345 SAMPLE STREET ONE  
MIAMI, FL 33175


---

SAMPLE SCHOOL 9999

BOX \_\_\_\_\_ OF \_\_\_\_\_

TO BE SCORED ALGEBRA 1

PEARSON  
2510 NORTH DODGE STREET  
IONA CITY, IA 52245  
1-877-847-3043  
FCAT SPRING 2012



620-149-001 0031814355 ANS

**GREEN**  
TO BE SCORED  
Biology 1 and Geometry  
Return Label

**PURPLE**

TO BE SCORED Algebra 1  
Return Label

SAMPLE DISTRICT 99

12345 SAMPLE STREET ONE  
MIAMI, FL 33175


---

SAMPLE SCHOOL 9999

BOX \_\_\_\_\_ OF \_\_\_\_\_

TO BE SCORED BIOLOGY/GEOMETRY

PEARSON  
2510 NORTH DODGE STREET  
IONA CITY, IA 52245  
1-877-847-3043  
FCAT SPRING 2012



620-149-003 0031828449 ANS

# Large Print Response Grids

Math Retake  
Regular Print  
Grid

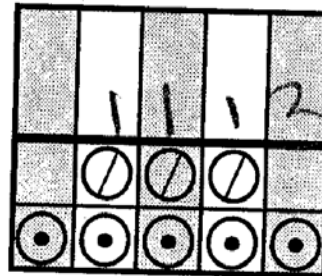
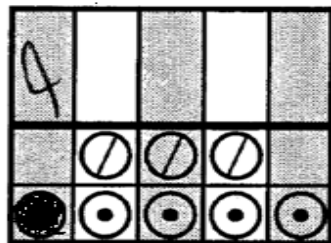
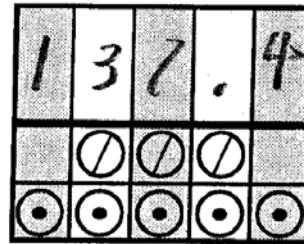
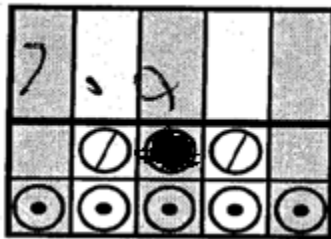
	/	/	/	
•	•	•	•	•
0	0	0	0	0
1	1	1	1	1
2	2	2	2	2
3	3	3	3	3
4	4	4	4	4
5	5	5	5	5
6	6	6	6	6
7	7	7	7	7
8	8	8	8	8
9	9	9	9	9

Math Retake  
Large Print  
Grid

	/	/	/	
•	•	•	•	•
0	0	0	0	0
1	1	1	1	1
2	2	2	2	2
3	3	3	3	3
4	4	4	4	4
5	5	5	5	5
6	6	6	6	6
7	7	7	7	7
8	8	8	8	8
9	9	9	9	9

- Responses must be written legibly with only one digit or symbol in each answer box.
- Bubbles for any symbol used should also be gridded.
- Valid digits: 0-9
- Valid symbols: decimal can be used in any column; fraction bar can only be used in middle three columns

# Samples of LP Grid Responses



Use Flexible Responding accommodations for eligible students

# ESE/504 Accommodations Quick Reference

Accommodation	For CBT Administrations	For PBT Administrations
Flexible Presentation	TestHear Accommodated CBT Forms <ul style="list-style-type: none"> <li>• Large Print Font</li> <li>• Color Contrast</li> <li>• Zoom</li> <li>• Screen Reader</li> </ul> Paper Accommodations <ul style="list-style-type: none"> <li>• Regular Print</li> <li>• Large Print*</li> <li>• Braille</li> <li>• One-Item-Per-Page*</li> <li>• Reading Passage Booklet</li> </ul> Oral Presentation (by human reader)	Large Print Braille One-Item-Per-Page Oral Presentation (by human reader)
Flexible Scheduling	Extended Time <ul style="list-style-type: none"> <li>• Up to one school day per session</li> </ul>	Extended Time <ul style="list-style-type: none"> <li>• May test over more than one day per session</li> </ul>
Assistive Devices	Must use TestHear Accommodated CBT Form(s)	

\*After the Fall Retake administration, Large Print and OIPP paper accommodations will not be provided for CBT administrations.



# ELL Accommodations

- Additional Time Accommodation
  - All ELLs may have the entire school day per session to test, if needed (unless the student also has an ESE accommodation to test over more than one day)
- No electronic dictionaries



# Comment Forms

- Available on PearsonAccess (no login required)
- For Paper-Based Tests
  - Test Administrator
  - School Assessment Coordinator
  - District Assessment Coordinator
- For Computer-Based Tests
  - Student
  - Test Administrator
  - School Assessment Coordinator
  - Technology Coordinator
  - District Assessment Coordinator




# FLDOE Website

- Resources
  - K-12 Assessment Memoranda
  - FCAT, FCAT 2.0, and EOC Frequently Asked Questions (October 2011)
  - FCAT 2.0 and EOC Fact Sheets (October 2011)
  - Statewide Assessment Graduation Requirements (September 2011)
  - Test Design Summary (September 2011)
  - Success Measures
  - Understanding FCAT 2.0 Reports and EOC Scores (Early 2012)

# Survey by FDOE and Pearson

- Who: District and school assessment coordinators, test administrators
- What: Brief survey to help shape and focus training
- Where:  
<http://bit.ly/FloridaSurvey>
- When: 9/6/11 - 9/16/11



The poster features a yellow background with a circular logo at the top containing three stylized human figures (green, orange, blue) and a red checkmark. Below the logo, the text 'TELL US MORE' is written in large, bold, blue letters, with 'about YOUR important work' in smaller black text underneath. A yellow banner below this contains the text 'Go to: <http://bit.ly/FloridaSurvey>'. The main body of the poster is blue and contains the text: 'Your opinions could help shape training for district and school assessment personnel. Please log on to the survey to give feedback and to help identify ways we can better support:'. Below this, three categories are listed in yellow text: 'Test administrators', 'School assessment coordinators', and 'District assessment coordinators'. A QR code is located in the bottom right corner of the blue section. At the bottom of the poster, the Pearson logo is on the left and the Florida Department of Education logo is on the right. The text 'Survey available 9/6/11 - 9/16/11' is positioned above the QR code.

**TELL US MORE**  
about YOUR important work

Go to: <http://bit.ly/FloridaSurvey>

Your opinions could help shape training for district and school assessment personnel. Please log on to the survey to give feedback and to help identify ways we can better support:

Test administrators  
School assessment coordinators  
District assessment coordinators

Survey available 9/6/11 – 9/16/11

PEARSON Florida Department of EDUCATION



# K-12 Administration Team

- Susie Lee – 850-245-0785; [Susan.Lee@fldoe.org](mailto:Susan.Lee@fldoe.org)
- Jenny Black – 850-245-9470; [Jenny.Black@fldoe.org](mailto:Jenny.Black@fldoe.org)
- Tamika Brinson – 850-245-0786; [Tamika.Brinson@fldoe.org](mailto:Tamika.Brinson@fldoe.org)
- Tara Gardner – 850-245-0742; [Tara.Gardner@fldoe.org](mailto:Tara.Gardner@fldoe.org)
- Molly Hand – 850-245-9926; [Molly.Hand@fldoe.org](mailto:Molly.Hand@fldoe.org)
- Kira Sullivan – 850-245-0784; [Kira.Sullivan@fldoe.org](mailto:Kira.Sullivan@fldoe.org)