

2010-2011 FCAT/FCAT 2.0/EOC Scoring and Reporting Updates

Jackie Mueller, Assistant Bureau Chief
Bureau of K-12 Assessment

Updated Ethnicity/Race Categories

- Ethnicity – if gridded “yes” for Hispanic/Latino, this information overrides race categories for reporting
- If more than one Race category is “yes”, the student is reported as multiracial

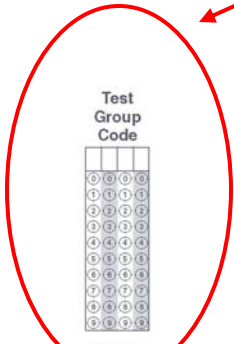
PLACE STUDENT LABEL HERE	STUDENT GRADE LEVEL Grid only one <input type="radio"/> 10 <input type="radio"/> 11 <input type="radio"/> 12 <input type="radio"/> 13 <input type="radio"/> AD		
	GENDER <input type="radio"/> Male <input type="radio"/> Female		
	ETHNICITY <input checked="" type="radio"/> <input type="radio"/> Hispanic or Latino		
	RACE <input checked="" type="radio"/> <input type="radio"/> American Indian or Alaska Native <input checked="" type="radio"/> <input type="radio"/> Asian <input checked="" type="radio"/> <input type="radio"/> Black or African American <input checked="" type="radio"/> <input type="radio"/> Native Hawaiian or Other Pacific Islander <input checked="" type="radio"/> <input type="radio"/> White		
	SCHOOL USE ONLY <input type="radio"/> DNS - R <input type="radio"/> UNDO - R		
	PRIMARY EXCEPTIONALITY Grid only one <input type="radio"/> CI <input type="radio"/> EBD <input type="radio"/> ASD <input type="radio"/> BI <input type="radio"/> SLD <input type="radio"/> TBI <input type="radio"/> LI <input type="radio"/> GIF <input type="radio"/> OHI <input type="radio"/> DHH <input type="radio"/> HH <input type="radio"/> InD <input type="radio"/> VI <input type="radio"/> DSI		
	PEARSON USE ONLY R LP <input type="radio"/> <input type="radio"/> <input type="radio"/> <input type="radio"/> A <input type="radio"/> C BR <input type="radio"/> <input type="radio"/> <input type="radio"/> <input type="radio"/> B <input type="radio"/> D		
	SECTION 504 <input type="radio"/> Yes GRID ALL THAT APPLY ESE/504 ACCOMMODATION TYPES R <input type="radio"/> Flexible presentation <input type="radio"/> Flexible responding <input type="radio"/> Flexible scheduling <input type="radio"/> Flexible setting <input type="radio"/> Assistive device(s) other than standard calculator ELL ACCOMMODATION TYPES R <input type="radio"/> Flexible scheduling <input type="radio"/> Flexible setting <input type="radio"/> Assistance in heritage language <input type="radio"/> Approved dictionary ELL Receiving ESOL services for: <input type="radio"/> Less than 1 year <input type="radio"/> At least 1 year but less than 2 years <input type="radio"/> 2 years or more		

184775-001:321 Printed in the USA by Pearson ISD0626

Test Group Codes



Fall Reading
Sunshine State Standards
RETAKE
Test and Answer Book



FLORIDA DEPARTMENT OF EDUCATION
www.fdoe.org

SECURITY STATEMENT
All materials in this book are CONFIDENTIAL and must be kept secure at all times. Duplication, reproduction, and other unauthorized use of FCAT test books and answer books are prohibited. Test security requirements and sanctions for security violations are established by Section 1008.24, Florida Statutes, and State Board of Education Rule 6A-10.042, FAC. This statute and rule are reproduced in the FCAT Administration Manual.

Office of Assessment
Florida Department of Education
Tallahassee, Florida
Copyright © 2010 State of Florida Department of State

- Test Group Codes continue to assist us in investigating testing irregularities
- Writing Folders will have test group code grids this year



Spring 2010

- PreID files
- One Preidentification window for Spring 2011
 - January 3-28, 2011
- One Preidentification window for EOC
 - Algebra 1 EOC, Operational
 - Geometry EOC, Field Test
 - Biology 1 EOC, Field Test



Reporting Schedule

Per Florida Statute, scores for Spring Writing, Reading, Mathematics, and Science Assessments will be reported no later than the week of June 8, 2011.



FCAT 2.0 Reporting

- This year, FCAT and FCAT 2.0 scales will be linked using a statistical process similar to equating. Student results will be reported on the FCAT scale with FCAT achievement levels.
- Next year, a new FCAT 2.0 scale will be developed based on data analysis in the fall, and the new FCAT 2.0 scale and achievement levels will be used for Spring 2012 score reporting.



FCAT/FCAT 2.0 Paper Reports

- FCAT Writing and FCAT Science reports will look the same as in previous years
- FCAT 2.0 Reading and Mathematics reports will have a new look and feel
 - Scores reported on FCAT scale
 - Explanation of linked scale score
 - New reporting categories



Florida End-of-Course (EOC) Assessments

April 2011 (window not set yet)

- PreID file submission

MAY 9 – 27, 2011 Administration

- DISTRICTS SELECT WEEK (M-F)
 - ALGEBRA 1 EOC ASSESSMENT

MAY 2 – JUNE 3, 2011 Field Tests

- DISTRICTS SELECT WEEK (M-F)
 - GEOMETRY EOC FIELD TEST
 - BIOLOGY 1 EOC FIELD TEST



End-of-Course Reporting

- The first year of live reporting requires post-equating.
- No dates scheduled for reporting; it will be contingent upon the equating process – this will be the case for the first operational year of each EOC.



End-of-Course Reporting

- Three forms of the test will be scored, and they will be post-equated to ensure that reported scores are accurate regardless of the form number.
- Students will receive a scale score, the range of which is still being discussed with advisory groups. Districts may determine how to use the scale score as 30% to calculate the student's final grade in the course.
- FDOE will provide one-third cut reports showing student performance across the state to help districts in making this determination.



2010 Scoring Inquiries

- Spring 2010 Scoring Inquiries
 - Closes today, September 8, 2010
 - Late Reporting Dates
 - 9/10/2010 and 10/08/2010
- Fall 2010 Retake Scoring Inquiries
 - December 31, 2010
 - Late Reporting Dates
 - 1/14/2011 and 2/9/2011



Scoring and Reporting Team

LynnAnn Tabelaing, Director LynnAnn.Tabelaing@fldoe.org

Lisa Carlisle Lisa.Carlisle@fldoe.org

Carlton Gay Carlton.Gay@fldoe.org

Qian Liu Qian.Liu@fldoe.org

Jenica Wurm Jenica.Wurm@fldoe.org

Ying Zhang Ying.Zhang@fldoe.org