

Update on Co-Teaching

Jeanine Blomberg

June 21, 2005 State Board Action

- To ensure the class size reduction calculation meets the Constitutional mandate that limits the number of students in each classroom.
 - In 2005-2006, district class size averages will include co-teachers up to the number reported in 2004-2005.
 - In 2006-2007, school-level class size averages will not include co-teachers.
-

Since 2002-2003,

- Co-teaching was reported by 37 districts in 2002-03
 - By 2004-05, 53 districts reported co-teaching
 - Co-teaching has increased by 260% since the implementation of the class size amendment
 - 14 districts are above this average
 - 12 of the 14 districts exceed 500%
-

Definition for Co-Teaching

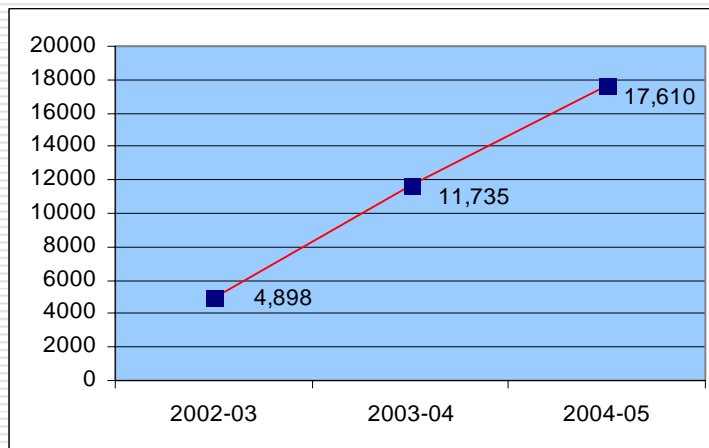
- Co-Teaching Model—teachers serve all students in the class for entire class period.
 - Examples:
 - Two basic teachers, or
 - One basic teacher and one Exceptional Student Education (ESE) teacher
 - 1.04% to 3.16% (2004-05 range is –0- to 13.89%)
-

Definition for Inclusion Model (not included in class size calculations)

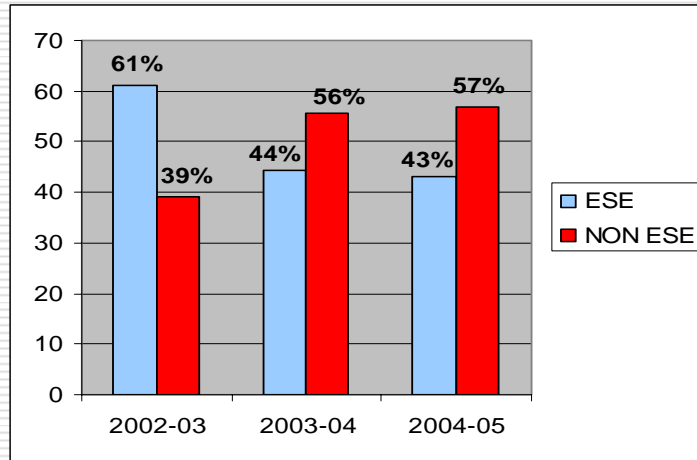
- Inclusion Model or “In-Class One-on-One Model”—ESE teacher serves ESE students and provides no services to other students in the class.
 - Example
 - One basic teacher and one ESE teacher
 - .37% to .71% (2004-05 range is –0- to 24.13%)
-

State Board of Education did not ban co-teaching or additional support for students with disabilities!

INCREASE IN DISTRICT REPORTED CO-TEACHING CLASSROOM PERIODS



CO-TEACHING CLASSROOM PERIODS
Percent with Exceptional Student Education (ESE)
Teachers and Percent with Non ESE Teachers



**FLORIDA DEPARTMENT OF EDUCATION
DISTRICT CLASS SIZE
2002-03/2004-05 CO-CLASSROOM/PERIODS (WITHOUT PODS) COMPARED**

	Grades PK - 3				Grades 4-8				Grades 9-12			
	Change from Base				Change from Base				Change from Base			
	2002-03	2003-04	2004-05		2002-03	2003-04	2004-05		2002-03	2003-04	2004-05	
	-1-	-2-	-3-	-4-	-5-	-6-	-7-	-8-	-9-	-10-	-11-	-12-
ALACHUA			65	65		2	74	74		5	5	5
BAKER	4	5	3	(1)		9	8	8			4	4
BAY	6	54	120	114	22	43	148	126	4	14	30	26
BRADFORD												
BREVARD	50	81	59	9	37	30	24	(13)		2	18	18
BROWARD	8	444	975	967	1	404	655	654		101	101	101
CALHOUN	30	24		(30)	12	18	6	(6)			1	1
CHARLOTTE		107	151	151		13	35	35	2		2	
CITRUS	10	19	7	(3)	4	26	27	23			1	1
CLAY	2		5	3	6	2	12	6			1	1
COLLIER		3	257	257	27	1	30	3	4	1	2	(2)
COLUMBIA												
DADE			553	553			635	635			434	434
DESOTO	65	36		(65)	126	38		(126)				
DIXIE			16	16			1	1	1			(1)
DUVAL	441	1,114	1,504	1,063	875	797	1,525	650	409	765	720	311
ESCAMBIA												
FLAGLER			151	151			119	119		46	12	12
FRANKLIN												
GADSDEN	112	92	60	(52)	40	17	14	(26)	4			(4)
GILCHRIST		18	45	45								
GLADES		86				3						
GULF		12	12	12			12	12				
HAMILTON						1						
HARDEE	18			(18)	6	6		(6)				
HENDRY												
HERNANDO	9		159	150	3		195	192			56	56
HIGHLANDS		12				1				22	12	12
HILLSBOROUGH	30	304	319	289	283	417	692	409	52	60	140	88
HOLMES		6	42	42			12	12			2	2
INDIAN RIVER		6										
JACKSON	2	19	17	15	4			(4)	6		2	(4)
JEFFERSON	30	30		(30)	12	12		(12)				
LAFAYETTE												
LAKE		8	446	446	1	50	317	316		3	16	16
LEE	70	80	494	424	144	137	99	(45)	31	30		(31)
LEON		70	30	30		24	10	10				
LEVY	1	29		(1)	3	9	7	4			3	3
LIBERTY		3	3	3								
MADISON		44	37	37								
MANATEE	12	30	17	5	36	36	34	(2)		2		
MARION		11	15	15		66	55	55		11	4	4
MARTIN					8	45		(8)	6	6	2	(4)
MONROE		58	13	13		26	19	19		6		
NASSAU			42	42			61	61			10	10
OKALOOSA		13	19	19	2	18	38	36			26	26
OKEECHOBEE	1	1		(1)		6			5	14	5	
ORANGE		342	479	479		338	477	477		187		
OSCEOLA		31	23	23		55	21	21	7	13	2	(5)
PALM BEACH	24	334	344	320	12	228	136	124		199	130	130
PASCO	27	49	162	135	202	372	538	336	153	222	300	147
PINELLAS	420	1,003	532	112	241	464	263	22	14	169	71	57
POLK	6	186	190	184		41	65	65		29	7	7
PUTNAM			4	4			8	8	1			(1)
SAINT JOHNS	13	65	84	71	18	90	109	91	2	6		(2)
SAINT LUCIE					4	1	13	9	21	8	2	(19)
SANTA ROSA			24	24			1	1			6	6
SARASOTA		25	7	7		32	3	3			10	10
SEMINOLE	172	257	267	95	118	119	118		5	12	12	7
SUMTER		54	25	25		26	22	22				
SUWANNEE		5	14	14			16	16			6	6
TAYLOR	17	38		(17)								
UNION						3						
VOLUSIA		1	300	300	220	271	314	94	90	290	327	237
WAKULLA			47	47								
WALTON			6	6			10	10				
WASHINGTON												
FAU LAB SCHOOL												
FSU LAB SCHOOL	2	6		(2)	21			(21)	11			(11)
FAMU LAB SCHOOL							6	6				
UF LAB SCHOOL												
STATE	1,582	5,215	8,144	6,562	2,488	4,297	6,984	4,496	828	2,223	2,482	1,654

**FLORIDA DEPARTMENT OF EDUCATION
DISTRICT CLASS SIZE
2002-03/2004-05: % ROOMS¹ W/ CO-TEACHERS IN-CLASS ONE-ON-ONE**

	Co-Classrooms				In-Class One-on-One			
	2002-03	2003-04	2004-05	Change	2002-03	2003-04	2004-05	Change
	-1-	-2-	-3-	-4-	-5-	-6-	-7-	-8-
ALACHUA	0.00%	0.10%	1.99%	1.99%	0.00%	0.00%	0.00%	0.00%
BAKER	0.90%	2.72%	3.32%	2.42%	1.57%	5.64%	9.44%	7.87%
BAY	0.45%	1.68%	4.31%	3.86%	1.35%	0.47%	0.83%	-0.53%
BRADFORD	0.00%	0.00%	0.00%	0.00%	0.00%	0.00%	0.00%	0.00%
BREVARD	0.68%	0.68%	0.86%	0.18%	0.00%	0.00%	0.00%	0.00%
BROWARD	0.02%	1.72%	2.82%	2.80%	0.03%	0.06%	0.06%	0.03%
CALHOUN	8.64%	7.81%	9.96%	1.32%	0.00%	0.00%	0.00%	0.00%
CHARLOTTE	0.08%	3.30%	4.64%	4.56%	0.00%	0.00%	0.00%	0.00%
CITRUS	0.84%	2.03%	1.58%	0.75%	0.60%	1.49%	0.18%	-0.42%
CLAY	0.16%	0.03%	0.23%	0.06%	1.02%	0.06%	0.55%	-0.47%
COLLIER	0.63%	0.09%	1.82%	1.20%	5.91%	5.45%	5.20%	-0.71%
COLUMBIA	0.00%	0.00%	0.00%	0.00%	0.08%	0.08%	0.00%	-0.08%
DADE	0.00%	0.00%	2.27%	2.27%	0.00%	0.00%	0.00%	0.00%
DESOTO	22.39%	6.11%	0.00%	-22.39%	0.00%	0.00%	0.00%	0.00%
DIXIE	0.19%	0.00%	2.96%	2.77%	0.00%	0.00%	0.52%	0.52%
DUVAL	6.21%	9.06%	12.10%	5.89%	0.00%	0.06%	0.05%	0.05%
ESCAMBIA	0.00%	0.00%	0.00%	0.00%	0.08%	0.00%	0.00%	-0.08%
FLAGLER	0.00%	2.56%	8.17%	8.17%	1.17%	0.78%	0.00%	-1.17%
FRANKLIN	0.00%	0.00%	0.00%	0.00%	0.00%	0.00%	0.00%	0.00%
GADSDEN	7.90%	6.23%	3.98%	-3.93%	1.61%	0.06%	0.59%	-1.02%
GILCHRIST	0.00%	2.62%	5.49%	5.49%	0.00%	0.00%	1.10%	1.10%
GLADES	0.00%	35.04%	0.00%	0.00%	0.00%	0.00%	0.00%	0.00%
GULF	0.00%	2.30%	4.45%	4.45%	0.00%	0.00%	0.00%	0.00%
HAMILTON	0.00%	0.22%	0.00%	0.00%	0.00%	0.00%	0.00%	0.00%
HARDEE	2.09%	0.48%	0.00%	-2.09%	3.66%	0.48%	0.00%	-3.66%
HENDRY	0.00%	0.00%	0.00%	0.00%	0.00%	0.00%	0.00%	0.00%
HERNANDO	0.29%	0.00%	6.62%	6.33%	0.56%	0.60%	1.70%	1.13%
HIGHLANDS	0.00%	0.90%	0.31%	0.31%	0.11%	0.00%	0.00%	-0.11%
HILLSBOROUGH	1.80%	3.19%	4.25%	2.45%	0.32%	0.59%	2.51%	2.19%
HOLMES	0.00%	0.67%	6.28%	6.28%	0.00%	0.00%	0.56%	0.56%
INDIAN RIVER	0.00%	0.15%	0.00%	0.00%	0.00%	0.03%	0.00%	0.00%
JACKSON	1.20%	1.82%	1.77%	0.57%	0.50%	0.00%	0.00%	-0.50%
JEFFERSON	11.90%	12.21%	0.00%	-11.90%	0.00%	0.00%	0.00%	0.00%
LAFAYETTE	0.00%	0.00%	0.00%	0.00%	0.00%	0.00%	0.00%	0.00%
LAKE	0.03%	1.68%	9.82%	9.78%	0.00%	0.33%	0.07%	0.07%
LEE	2.21%	1.95%	4.50%	2.29%	0.18%	0.22%	0.46%	0.27%
LEON	0.00%	0.80%	0.34%	0.34%	0.00%	0.90%	1.15%	1.15%
LEVY	0.51%	1.75%	0.51%	0.00%	0.00%	0.00%	0.00%	0.00%
LIBERTY	0.00%	0.84%	0.78%	0.78%	0.00%	0.00%	0.00%	0.00%
MADISON	0.00%	5.61%	4.46%	4.46%	0.00%	0.00%	0.00%	0.00%
MANATEE	0.60%	0.81%	0.50%	-0.10%	4.58%	1.49%	2.40%	-2.18%
MARION	0.00%	1.52%	1.47%	1.47%	0.00%	2.52%	5.60%	5.60%
MARTIN	0.28%	0.95%	0.03%	-0.25%	0.02%	0.00%	0.14%	0.12%
MONROE	0.00%	5.22%	3.35%	3.35%	0.00%	2.70%	0.05%	0.05%
NASSAU	0.00%	0.00%	4.40%	4.40%	0.00%	0.00%	0.00%	0.00%
OKALOOSA	0.06%	0.86%	2.35%	2.29%	0.00%	0.00%	0.00%	0.00%
OKECHOBEE	0.71%	2.33%	0.93%	0.22%	15.21%	17.17%	24.13%	8.91%
ORANGE	0.00%	2.33%	2.38%	2.38%	0.00%	0.00%	0.00%	0.00%
OSCEOLA	0.11%	1.03%	0.50%	0.40%	0.00%	0.01%	0.26%	0.26%
PALM BEACH	0.10%	2.06%	1.85%	1.75%	0.54%	1.58%	0.29%	-0.25%
PASCO	6.56%	9.42%	13.89%	7.33%	0.62%	2.53%	0.00%	-0.62%
PINELLAS	2.78%	5.43%	3.92%	1.14%	0.70%	0.06%	1.50%	0.79%
POLK	0.03%	1.32%	1.31%	1.27%	0.00%	0.00%	0.25%	0.25%
PUTNAM	0.03%	0.00%	0.23%	0.20%	0.39%	0.22%	0.06%	-0.34%
SAINT JOHNS	1.16%	4.92%	5.63%	4.47%	0.00%	1.50%	0.09%	0.09%
SAINT LUCIE	0.72%	0.22%	0.28%	-0.44%	0.52%	0.42%	3.67%	3.15%
SANTA ROSA	0.00%	0.00%	0.50%	0.50%	0.00%	0.00%	0.00%	0.00%
SARASOTA	0.00%	1.31%	0.33%	0.33%	0.00%	0.07%	0.00%	0.00%
SEMINOLE	2.49%	2.89%	3.61%	1.12%	0.81%	0.38%	0.79%	-0.02%
SUMTER	0.00%	5.33%	2.39%	2.39%	0.00%	0.00%	0.00%	0.00%
SUWANNEE	0.00%	0.71%	4.49%	4.49%	0.00%	0.00%	0.00%	0.00%
TAYLOR	3.00%	6.31%	0.00%	-3.00%	0.00%	0.00%	0.00%	0.00%
UNION	0.00%	0.84%	0.00%	0.00%	2.46%	0.00%	0.00%	-2.46%
VOLUSIA	2.16%	3.53%	5.42%	3.26%	0.00%	0.00%	0.00%	0.00%
WAKULLA	0.00%	0.00%	3.87%	3.87%	0.00%	0.00%	0.00%	0.00%
WALTON	0.00%	0.00%	1.03%	1.03%	0.00%	0.00%	5.60%	5.60%
WASHINGTON	0.00%	0.00%	0.00%	0.00%	0.00%	0.00%	0.00%	0.00%
FAU LAB SCHOOL	0.00%	0.00%	0.00%	0.00%	0.00%	0.00%	0.00%	0.00%
FSU LAB SCHOOL	19.88%	1.33%	0.00%	-19.88%	0.00%	0.00%	0.00%	0.00%
FAMU LAB SCHOOL	0.00%	0.00%	4.72%	4.72%	0.00%	0.00%	0.00%	0.00%
UF LAB SCHOOL	0.00%	0.00%	0.00%	0.00%	0.00%	0.00%	0.00%	0.00%
STATE	1.04%	2.20%	3.16%	2.12%	0.37%	0.42%	0.71%	0.34%

Created 8/8/05

¹Percents represent number of classroom/periods in which either co-teachers or in-class one-on-one teachers were teaching/divided by the total number of classrooms in which core courses were taught.

**FLORIDA DEPARTMENT OF EDUCATION
DISTRICT CLASS SIZE
2002-03/2004-05 CO-CLASSROOM/PERIODS (WITHOUT PODS) COMPARED: AII**

ALL GRADES

	2002-03	2003-04	2004-05
	-1-	-2-	-3-
ALACHUA		85.71%	31.94%
BAKER	100.00%	42.86%	26.67%
BAY	15.63%	9.01%	31.54%
BRADFORD			
BREVARD	89.66%	89.38%	96.04%
BROWARD	100.00%	81.24%	81.28%
CALHOUN	100.00%	85.71%	
CHARLOTTE	100.00%	99.17%	67.55%
CITRUS	78.57%	4.44%	5.71%
CLAY		50.00%	22.22%
COLLIER	9.68%	100.00%	68.17%
COLUMBIA			
DADE			51.36%
DESOTO	33.51%	91.89%	
DIXIE	100.00%		29.41%
DUVAL	10.61%	41.48%	45.56%
ESCAMBIA			
FLAGLER		17.39%	18.44%
FRANKLIN			
GADSDEN	99.36%	80.73%	85.14%
GILCHRIST			57.78%
GLADES		96.63%	
GULF			12.50%
HAMILTON		100.00%	
HARDEE	100.00%	100.00%	
HENDRY			
HERNANDO	100.00%		48.54%
HIGHLANDS		17.14%	
HILLSBOROUGH	25.48%	31.11%	35.62%
HOLMES			89.29%
INDIAN RIVER			
JACKSON		73.68%	84.21%
JEFFERSON	71.43%	71.43%	
LAFAYETTE			
LAKE		78.69%	87.29%
LEE	63.27%	51.82%	89.54%
LEON		32.98%	27.50%
LEVY	75.00%	36.84%	
LIBERTY		100.00%	100.00%
MADISON		56.82%	32.43%
MANATEE		11.76%	1.96%
MARION		15.91%	25.68%
MARTIN		78.43%	100.00%
MONROE		91.11%	34.38%
NASSAU			56.64%
OKALOOSA	100.00%	48.39%	48.19%
OKEECHOBEE		71.43%	
ORANGE		61.25%	73.95%
OSCEOLA	100.00%	65.66%	41.30%
PALM BEACH	100.00%	90.67%	83.93%
PASCO	19.37%	30.33%	25.40%
PINELLAS	83.56%	67.05%	76.44%
POLK	100.00%	78.13%	73.66%
PUTNAM			
SAINT JOHNS	30.30%	50.31%	81.35%
SAINT LUCIE	28.00%	11.11%	
SANTA ROSA			96.77%
SARASOTA		80.70%	95.00%
SEMINOLE	87.12%	84.28%	79.35%
SUMTER		28.75%	17.02%
SUWANNEE		40.00%	8.33%
TAYLOR	88.24%	94.74%	
UNION		100.00%	
VOLUSIA	7.74%	15.30%	42.51%
WAKULLA			10.64%
WALTON			18.75%
WASHINGTON			
FAU LAB SCHOOL			
FSU LAB SCHOOL	100.00%	100.00%	
FAMU LAB SCHOOL			100.00%
UF LAB SCHOOL			
STATE	39.00%	55.64%	56.84%