
Overview of Perkins IV Federal Funds

New Administrator Workshop

August 4, 2009

Kathleen Taylor
Division of Career and Adult Education
Florida Department of Education
kathleen.taylor@fldoe.org

Timeline

2008-2013 State Plan

- **January-August 2007-** Perkins IV Planning Committees met and crafted recommendations to be incorporated into State Plan
- **November 2007-** Conducted Regional Public Hearings
- **November-December 2007-** Revisions Based on Input Received at Public Hearings
- **February 2008-** Approval of 2008-2013 State Plan by Commissioner and State Board of Education
- **April 2008-** Submit 2008-2013 State Plan to USDOE
- **June 2008-** USDOE approved Florida's five year plan
- **April 2009-** FLDOE submitted updated State Plan

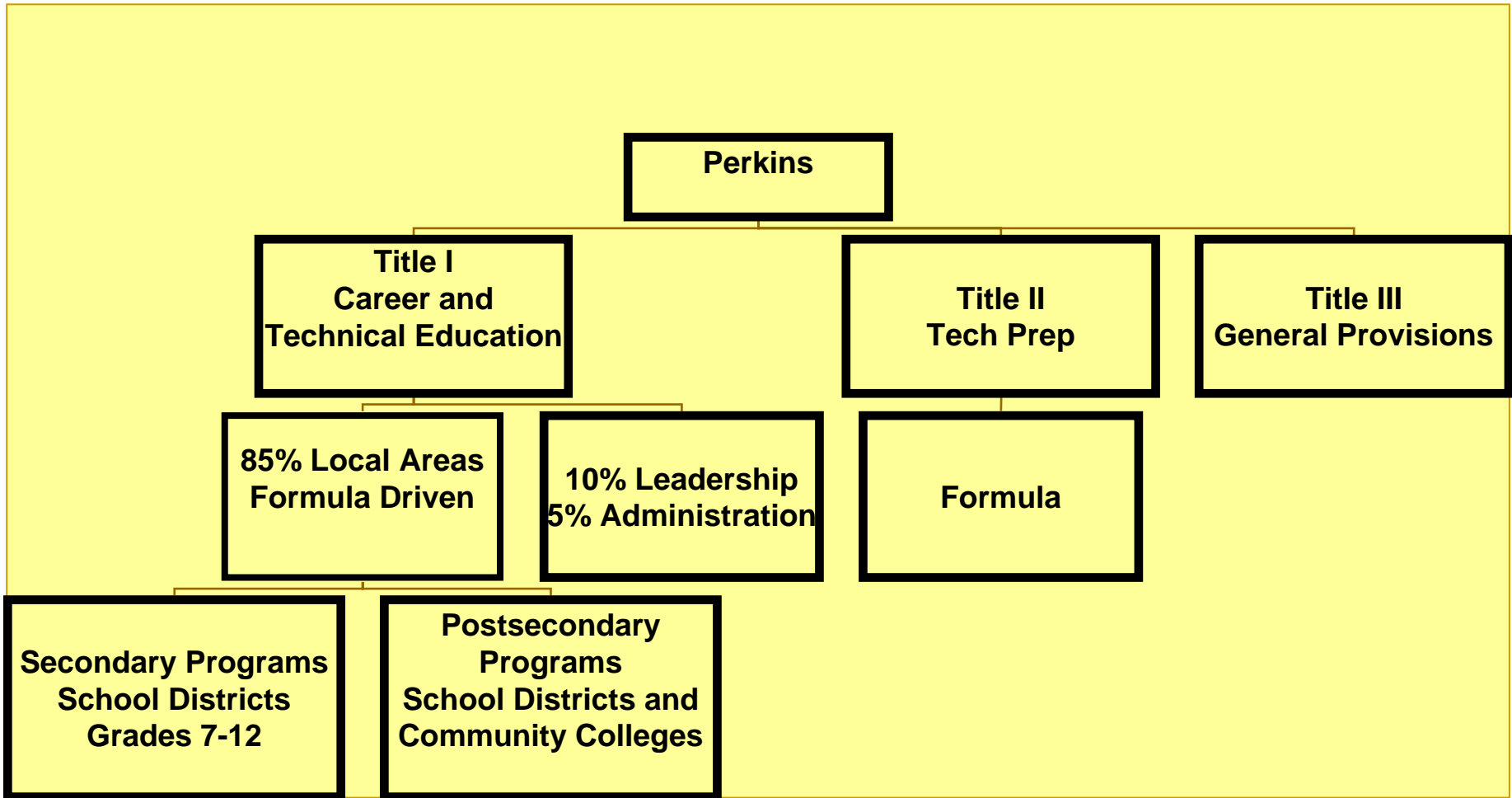
Carl D. Perkins Career and Technical Education Act of 2006

- **Major themes in the law include:**
 - an integrated academic and career and technical education performance accountability system that requires continuous student and program improvement
 - stronger academic and technical integration
 - connections between secondary and postsecondary education systems
 - close association with business and industry

New Direction for Career and Technical Education

- Emphasis on preparation for postsecondary education AND employment.
- Emphasis on “academic and technical” preparation, rather than on “job” preparation.
- Increased emphasis on achievement of a degree, certificate or credential.

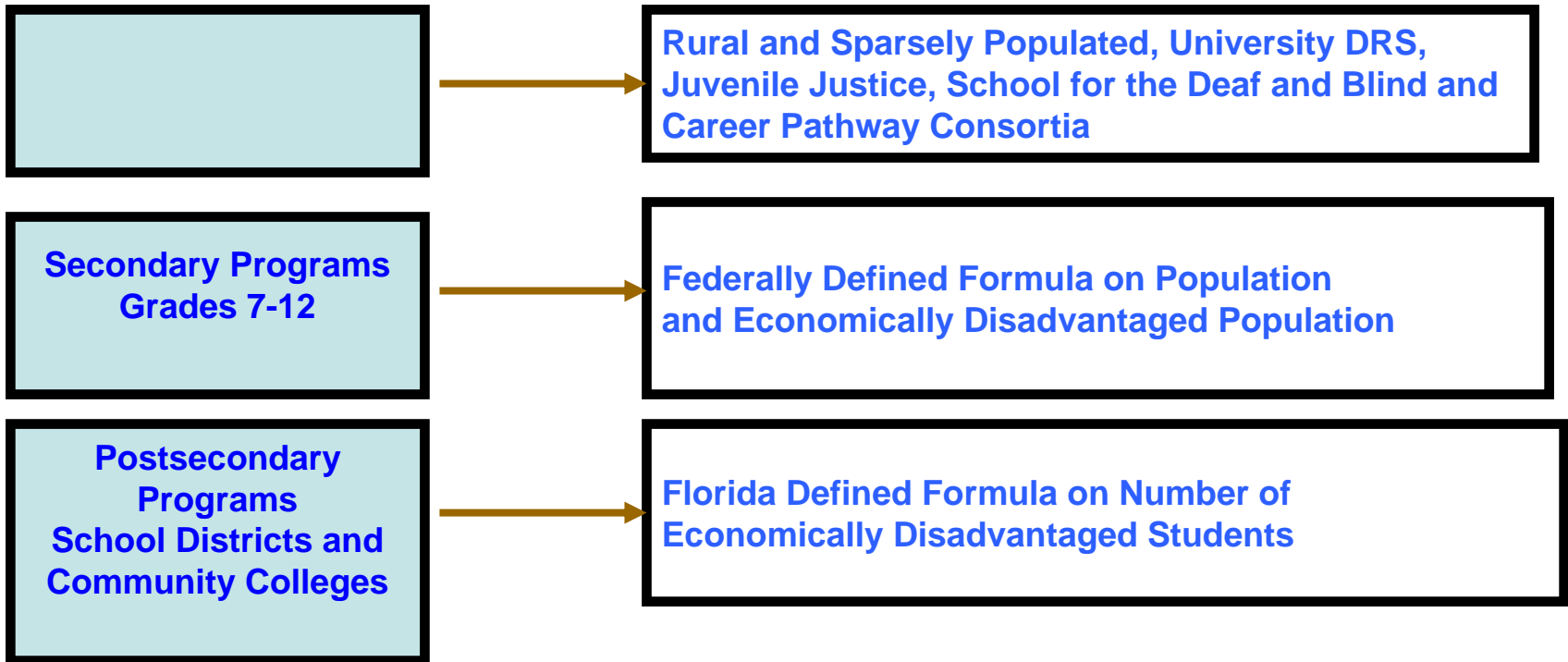
Carl D. Perkins Career and Technical Education Act of 2006



Funding Distribution

**88.85% Local Funds
Formula Driven**

**8.62% Leadership
2.53% Admin.**



2009-2010 ALLOCATIONS

□ Title I – Basic Grant	\$60,428,537
□ Title II - Tech Prep	<u>\$ 4,815,873</u>
	\$65,224,410

State Administration (2.53%):	\$ 1,650,000
State Leadership (8.62%):	\$ 5,622,177
Local Funds-Aid to District (88.85%):	\$57,972,232

State Administration and Leadership

8.62% State Leadership
\$5,622,177

■ **Discretionary**

- Non-Competitive Grants
 - Support Correctional Facilities
 - Professional Development
 - Program Improvement
 - Curriculum Development

■ **Salaries and Expenses**

- Benchmarks and Standards
- Monitoring and Compliance
- Office of Grants Administration
- Program Support
- Nontraditional Activities

2.53% Administration
\$1,650,000

■ **Support State-level Activities**

- Coordination, development and implementation of the State Plan
- Compliance issues
- Planning
- Evaluating the use and effectiveness of funds
- Technical Assistance
- Support the State Data systems

Consolidation of Funds

Aid to District Allocations, 2009-2010

88.85% Aid to Districts
\$57,972,232

■ Career and Technical Education	\$55,099,330
□ Secondary - (51.25%)	\$28,238,407
□ Postsecondary District - (12.65%)	\$ 6,970,065
□ Postsecondary Community College - (36.10%)	\$19,890,858
■ Reserve (5.0%)	\$2,872,902
□ Rural and Sparsely Populated Areas	\$ 2,172,902
□ Juvenile Justice Initiative	\$ 450,000
□ Florida School for the Deaf and the Blind	\$ 150,000
□ University Developmental Research Schools	\$ 100,000

Florida's Perkins IV State Plan- Distribution of Funds

Distribute basic grant funds to the three delivery systems based on proportionate share of total career and technical education full-time equivalents (FTE)

1. Secondary - District Programs (District 7-12 Career Education FTE)
2. Postsecondary - District Programs
3. Postsecondary - Community College Programs

A three-year average FTE has been calculated for above categories. The average of 2005-06, 2006-07 and 2007-08 FTE is being used to distribute basic grant funds for 2009-10.

File Edit View Insert Format Tools Data Window Help

Arial 10 B I U

A1 Career and Technical Education FTE, 2005-06 to 2007-08

A	C	D	E	F	G	H	I	J	K	L
Career and Technical Education FTE, 2005-06 to 2007-08										
CTE Delivery System	2005-06	2006-07	2007-08	3-Yr Average FTE						
Secondary⁽¹⁾										
7-8 FTE	10,093	9,800	10,031	9,975						
9-12 ESE FTE	9,491	9,825	10,088	9,801						
9-12 CTE FTE (Program 300)	72,052	71,015	71,485	71,517						
Dual Enrollment (103B, 103C)	1,806	1,940	2,264	2,003						
Total Secondary CTE	93,442	92,580	93,868	93,296						
District Postsecondary⁽²⁾										
PSAV FTE	21,895	21,901	23,971	22,589						
ATD FTE	370	403	533	435						
Total District Postsecondary FTE	22,265	22,304	24,504	23,024						
Community College⁽³⁾										
PSAV FTE	11,206	11,213	10,626	11,015						
PSV FTE	53,644	53,522	56,901	54,689						
Total CC FTE	64,850	64,734	67,527	65,704						
TOTAL CTE FTE	180,557	179,618	185,899	182,025						
CTE Delivery System	2005-06	2006-07	2007-08	3-Yr Average FTE						
Percentage of Total CTE FTE										
Secondary	51.75%	51.54%	50.49%	51.25%						
District - Postsecondary	12.33%	12.42%	13.18%	12.65%						
Community College - Postsecondary	35.92%	36.04%	36.32%	36.10%						
Notes:										
1) 3 Categories of Secondary Career-Technical FTE were included: 7-8, 9-12 ESE, 9-12 Basic, and Dual Enrollment FTE. Not all secondary level courses in the course code directory were included.										
2) District Postsecondary FTE is based on reported instructional hours in PSAV and ATD programs divided by 900										

FINAL

Sum=2735258.541 NUM

Florida's Perkins IV State Plan- Distribution of Funds

Sector Allocation Formula:

Total Community College Percentage(%) =

Total CC FTE 3 year average amount

Total Secondary FTE + Total Tech Center FTE + Total CC FTE

65,704

93,296 + 23,024 + 65,704 = 182,025

65,704

182,025

= 36.05% total goes out to Community Colleges

Aid to District Allocation Comparison

<u>Sector %</u>	<u>2009-2010</u>	<u>2008-2009</u>	<u>%Chg. +/-</u>
Secondary	51.25%	51.44%	-3.81%
Postsecondary District	12.65%	12.51%	+5.22%
Postsecondary CC	36.10%	36.05%	+4.30%

<u>Allocation</u>	<u>2009-2010</u>	<u>2008-2009</u>
Secondary	\$28,238,407	\$27,163,066
Postsecondary District	\$ 6,970,065	\$ 6,605,948
Postsecondary CC	<u>\$19,890,858</u>	<u>\$19,036,324</u>
	\$55,099,330	\$52,805,338

(No separate reserve allocation for Career Pathway Consortia during FY 09-10)

Carl D. Perkins Funding Distribution

- Utilized an equitable geographical formula for awarding projects
- Funds are not automatically awarded to any particular agency
- Funding **formulas** for:
 - Section 131 Secondary
 - Section 132 Postsecondary
 - Rural and Sparsely Populated
 - Career Pathway Consortia
- Funding **competitive** for:
 - Department of Juvenile Justice
- **State Leadership Projects**
 - Federal requirements
 - Discretionary
 - competitive

Funding Distribution – Secondary

■ **Section 131 Formula:**

- The formula remains the same as under Perkins III, the statute is updated to reflect how it was actually being implemented at the state level.
- The formula includes the following:
 - 30% allocated to local educational agencies (LEAs) based on the number of 5- to 17- year olds who reside in school districts
 - 70% allocated to LEAs based on the number of 5- to 17- year-olds in districts below the poverty line, based on data collected under elementary and Secondary Education Act (ESEA)
- Implementation Guide : Business Rules and Allocation Chart

Funding Distribution – Postsecondary

- **Section 132 Formula:**

- The formula uses the same formula as under Perkins III, basing the allocation on the number of individuals receiving **Federal Pell grants** and number of recipients of **assistance from the Bureau of Indian Affairs**.
- Florida distributed the funds by an alternate formula
- Funds were distributed based on each eligible agency's proportion of students enrolled in CTE who are economically disadvantaged
- Implementation Guide: Business Rules and Allocation Chart

Funding Distribution - Postsecondary

Florida's alternate criteria for need-based financial aid for Perkins Act, Section 132, for:

- Recipients of Pell Grants
- Participants in the Job Training Partnership Act Program/Welfare Transition
- Recipients of Student Education Opportunity Grants (SEOG)
- Participants in a federal career and technical education work-study program
- Recipients of Temporary Aid to Needy Families (TANF)
- Recipients of Food Stamps
- Recipients of Welfare Wages
- Recipients of Florida Student Assistance Grant

Other Updates:

November 2009

- 2008-2009 FTE Data requested to run 2010-2011 overall sector distribution calculation based on 3 year average (2006-2007, 2007-2008, 2008-2009)
- 2008-2009 Postsecondary Financial Need Data (Pell Grants, WIA, SEOG, etc.) requested to calculate local level postsecondary allocations for 2010-2011
- 2008-2009 Performance Data to be uploaded to Perkins IV Accountability web-based application

December 2009

- Submission of Perkins Consolidated Annual Report- 2008-2009 (narrative, enrollment, performance and financial reports)
- Run preliminary local level allocations based on 2009-2010 funding amount
- State Budget Planning based on 2009-2010 funding amount

February 2010

- Release of Perkins 2010-2011 Basic RFA (tentative)

Carl D. Perkins Career and Technical Education Act of 2006

- Tips for New Administrator:
 - Working Relationships
 - Terms Conditions and Assurances
 - Allowable, Reasonable, and Allocable
 - Communicate
 - Five year Plan
 - Document, Document, and Document

Related Resource Materials

Carl D. Perkins Act of 2006

- Division of Workforce Education Funding Opportunities
 - <http://www.fldoe.org/workforce/dwdgrants/default.asp>

- Perkins IV Resources on the DOE Website
 - http://www.fldoe.org/workforce/perkins/perkins_resources.asp

- USDOE – Perkins web information
 - <http://www.ed.gov/about/offices/list/ovae/pi/memoperkinsiv.html>

- Association for Career and Technical Education (ACTE)
 - www.acteonline.org

- Perkins Act of 2006: The Official Guide
 - www.acteonline.org