

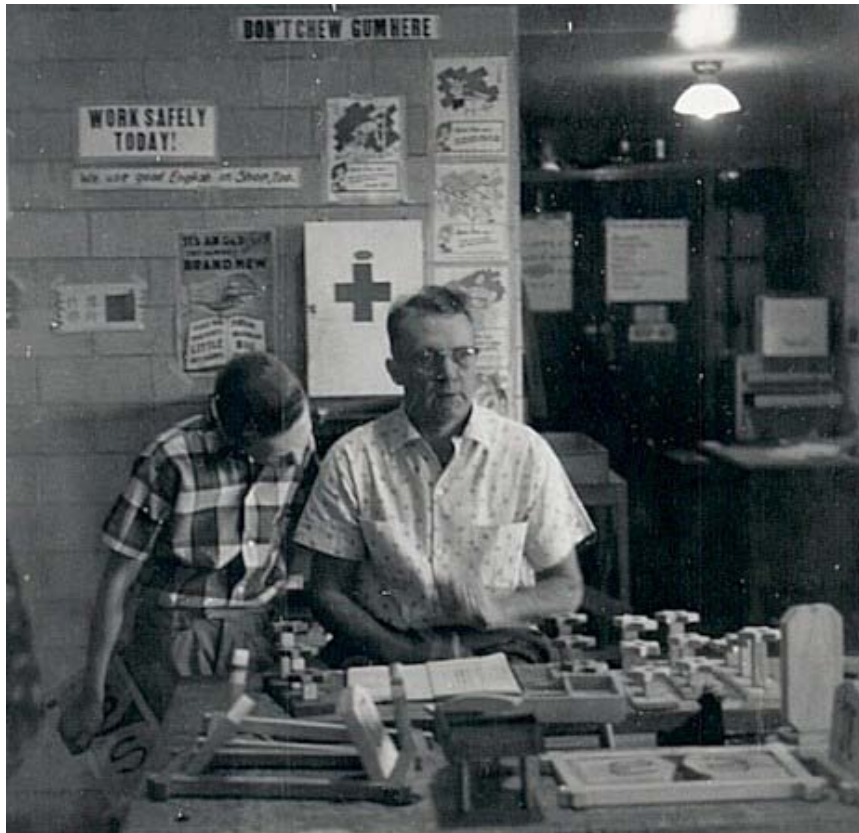
Career and Technical Education in Florida

Loretta Costin, Chancellor
Division of Career and Adult Education
Florida Department of Education

April 2011



Career and Technical Education



It's not your parent's wood shop or home economics class!

New Direction for Career and Technical Education (CTE)

“Then” Vocational Education	“Now” CTE
For a Few Students (non college bound)	For all Students
For a Few “Jobs” (those requiring less than an associate’s degree)	For all “Careers” (requiring technical degrees, baccalaureate degrees, professional degrees)
6 to 7 “Program Areas”	17 Clusters- 81 Pathways
In Lieu of Academics	Aligns/Supports Academics (integral partner in high school reform efforts)
High School Focused	High School and transition to postsecondary (certificate, 2 year, 4 year plus)

Research Shows it WORKS!

- Students at schools with ... rigorous CTE programs have higher achievement in reading, math and science.

(Southern Regional Educational Board)

- CTE concentrators take more and higher level math than their general track counterparts.

(2002 National Center for Research in Career and Technical Education)

Secondary Career and Technical Education

- A strategy to prepare high school students for success in college and careers
- Focus is on integrating rigorous academics with a career theme

“Learning is Relevant”

“Student is Engaged”

- Career and Professional Education Academies are a major strategy for improving college and career readiness

CAPE Students in 2009-10 Performed Better Than Their Peers; Certified CAPE Students Performed Even Better



Performance Indicator	Non-CAPE	CAPE, No Certification	CAPE + Certification
Average GPA	2.56	2.60	3.00
Chronically Absent	16.7%	19.7%	11.4%
At Least One Disciplinary Action	21.3%	20.8%	11.0%
Dropout Rate	2.2%	1.2%	0.2%
12 th Graders Earning Standard Diploma	78.6%	88.3%	97.4%
At Least One Accelerated Course	22.2%	22.0%	32.9%
Bright Futures Eligible Seniors	27.9%	25.9%	43.7%

College and Career Readiness Initiatives in Florida

Tools

Student Planning

- Required Career Planning Course
- Four-year Career Plan
- ePEP

Academic and Technical Skills

Programs/Courses

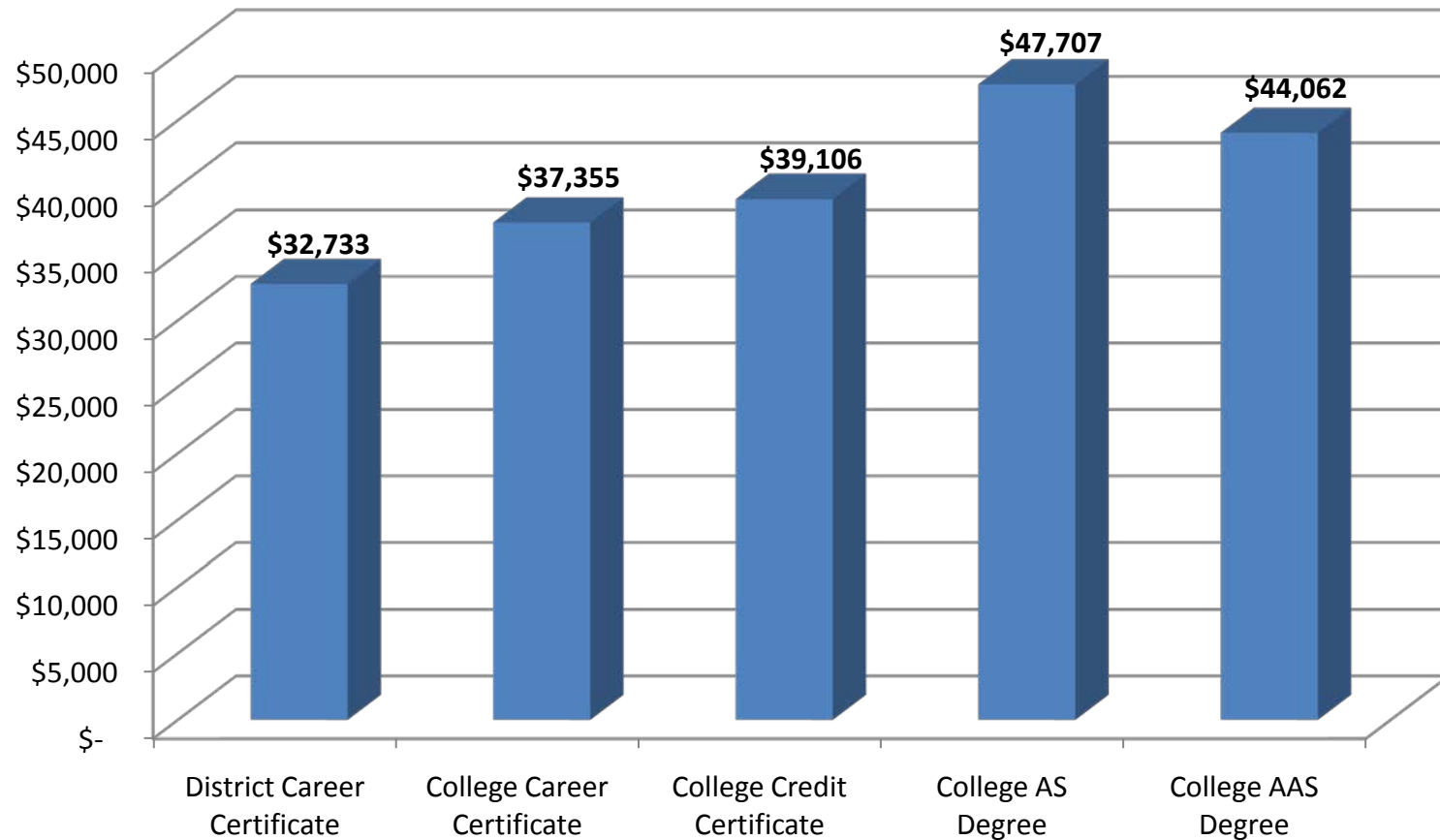
- Career and Professional Academies
- Career and Technical Student Organizations
- Integrated Courses

Results – Proof of Career Readiness

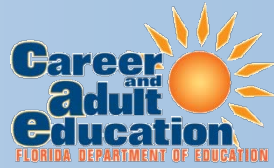
Credentials/Assessments

- Ready to Work
- Industry Certification
- Technical Skill Attainment

Average Annualized Earnings for 2008-09 Completers with Full-Time Employment in Fall 2009



2010-11 Gadsden Workforce Education Funding



- Funds can only be spent on district workforce education programs (**not K-12 programs**)
- Workforce Development Funds
–\$682,250
- Performance-Based Incentive Funds
–\$3,409

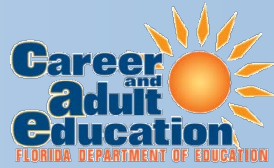
Workforce Development Funds

- Current Policy for District Allocations
 - **BASE FUNDING + ADJUSTMENT**
- 2010-11 Allocations
 - All districts reduced by about 3.7% (\$13.8 million)
 - 1.6% of funds added back based on the index of state funding need (\$6 million)
- 2011-12 Allocations
 - Available at the end of session
 - House initial budget: \$797,900
 - Senate initial budget: \$719,774

Performance-Based Incentive Funds to Districts

- Separate appropriation determined each year by formula
- Allocations are determined by each district's proportionate share of completions, special populations served and placements in the following programs:
 - Career Certificate (PSAV)/Applied Technology Diploma (ATD)
 - Apprenticeship
 - GED (General Education Development)
 - Adult High School (General Education Promotion)
 - Adult Literacy - Adult Basic Education (ABE)
 - Adult Literacy - ESOL programs

Contact Information



Loretta Costin, Chancellor
Division of Career and Adult Education
(850) 245-9463
Loretta.Costin@fldoe.org